

# SPARES LIST

FOR

## 1953 MATCHLESS

350 MODEL G3L RIGID FRAME (TOURING)  
350 MODEL G3LS SPRING FRAME (TOURING)  
350 MODEL G3LC RIGID FRAME (COMPETITION)  
350 MODEL G3LCS SPRING FRAME (COMPETITION)

500 MODEL G80 RIGID FRAME (TOURING)  
500 MODEL G80S SPRING FRAME (TOURING)  
500 MODEL G80C RIGID FRAME (COMPETITION)  
500 MODEL G80CS SPRING FRAME (COMPETITION)

350 - Bore 69 mm. Stroke 93 mm. Capacity 347 c.c.  
500 - Bore 82.5 mm. Stroke 93 mm. Capacity 498 c.c.



Compiled and Issued by the Manufacturers

## MATCHLESS MOTOR CYCLES

(Proprietors: ASSOCIATED MOTOR CYCLES LIMITED)

Registered Offices:

PLUMSTEAD ROAD, PLUMSTEAD  
LONDON, S.E.18 ENGLAND

Nearest Station:  
WOOLWICH ARSENAL  
(Southern Region Railway)

Factories:  
BURRAGE GROVE and MAXEY ROAD  
PLUMSTEAD, S.E.18

Telegrams and Cables: "MATCHLESS, WOL-LONDON"  
Telephone: WOOLWICH 1223 (5 Lines)  
Codes: A.B.C. 5th and 6th Edition, Bentley's, and Private Codes

All correspondence to:-  
MATCHLESS MOTOR CYCLES, PLUMSTEAD ROAD, LONDON S.E.18

**Price: TWO SHILLINGS and SIXPENCE**

EDITION CL-25

**(1) TERMS OF BUSINESS.**

**Our terms are :—** CASH WITH ORDER,  
CASH AGAINST PRO-FORMA INVOICE, OR  
APPROVED LEDGER ACCOUNT.

Customers who wish to avoid delay can open deposit accounts and the usual deposit is £5.

Orders from abroad should be accompanied by a remittance to cover the costs of goods and postal charges.

We do not send goods by "CASH ON DELIVERY" (C.O.D.).

**(2) PRICES AND SPECIFICATIONS.**

All prices, specifications and conditions are subject to alteration without notice. The prices of spares do not include the costs of packing and carriage.

**(3) CARRIAGE AND PACKING.**

All invoices for spare parts will be SURCHARGED by 2½ PER CENT. to cover the cost of packing and postage, or carriage, and the minimum surcharge is sixpence. (Home orders only.)

A special packing case, or crate, is required for some spares to ensure freedom from damage in transit. In such circumstances a special charge for the value of the case, or crate, will be made in addition to the 2½ per cent. surcharge but the special charge will be credited in full if the container is promptly returned to our factory carriage paid and in good condition.

**(4) HOW TO ORDER SPARES.**

**STATE :—** (a) The Model of the machine.  
(b) The complete engine number. (See paragraph 5.)  
(c) The frame number. (See paragraph 5.)  
(d) The part numbers of the spares required.  
(e) A description of each spare.  
(f) The quantity required of each item.  
(g) How the spares are to be sent. (Post, Parcels Post, Passenger train or Goods train.)  
(h) Your full name and address. These particulars are best written in BLOCK LETTERS  
(i) Mention if, or not, you have an account with us.

**ALSO :—** Unless you have a deposit or ordinary account, enclose a remittance to cover the cost of the spares plus the 2½ per cent. surcharge. (See paragraph 3.)

When cash is sent any excess will be refunded without prior application.

**NOTE :—** When sending orders by telegram or cable do not omit your name and address from the message.

**(5) IDENTITY.**

To ensure the supply of correct spares it is essential we can identify the machine or which they are required. The ONLY WAY to do that is for us to know the COMPLETE ENGINE and frame numbers.

The engine number is stamped on the LEFT crankcase, UNDER THE CYLINDER, and may have one or more letters incorporated in it. THE COMPLETE NUMBER MUST BE QUOTED.

The frame number is stamped on the right-hand side of the frame lug that is below the saddle.

**(6) SERVICE.**

The SERVICE AND REPAIR DEPARTMENT is situated in BURRAGE GROVE, PLUMSTEAD, LONDON, S.E.18, and is open on Mondays to Fridays from 8.30 a.m. to 12.55 p.m.—2 p.m. to 5.30 p.m. It is closed on Saturdays, Sundays and National Holidays.

It exists for the purpose of :—

- (a) Giving technical assistance verbally or through the Post.
- (b) Supplying spare parts over the counter or through the Post.
- (c) Repairing and re-conditioning machines, or parts of machines, of our make.

If it is considered necessary to bring a machine, or parts, to the factory for an urgent repair IT IS ESSENTIAL you make an appointment beforehand to avoid disappointment. This can be done by letter or telephone.

**(7) REPAIRS.**

The instructions regarding repairs should be clear and definite, otherwise the cost may be greater than that expected. We shall be pleased to give estimates for repairs if parts are sent to us for that purpose. If the estimate is accepted, no charge is made for the preliminary examination, but, should it be decided not to have the work carried out, it may be necessary to make a charge to cover the cost of whatever dismantling and re-assembly may have been done to prepare the estimate.

**(8) REPAIRS TO PROPRIETARY FITTINGS.**

We do not repair carburettors, chains, electrical equipment, saddles, sparking plugs, speedometers and tyres. On page 85 of the "**MAINTENANCE MANUAL AND INSTRUCTION BOOK**" will be found the names and addresses of the manufacturers of the proprietary equipment we fit, all of whom service and repair equipment they make.

**(9) PATTERNS.**

Parts sent to us as patterns, or for repair, should have attached to them a label bearing the sender's full name and address. The instructions regarding such parts should be sent under separate cover.

**(10) GUARANTEE.**

All parts made by us, and sold as spares, are subject to the same Limited Guarantee as that issued with each new motor cycle and that guarantee is printed in full on Page 88 of the "**MAINTENANCE MANUAL AND INSTRUCTION BOOK.**"

**(11) INSTRUCTION BOOK.**

A "**MAINTENANCE MANUAL AND INSTRUCTION BOOK**" (Edition CM-22) has been compiled and published by us.

One copy is supplied free, upon application, with each new motor cycle. Replacement copies are two shillings and sixpence each.

**(12) CORRESPONDENCE.**

Our routine is organised into different departments. Therefore delay cannot be avoided if matters relating to more than one department are contained in one letter.

Consequently when communicating with more than one department it is desirable to do so on SEPARATE SHEETS. Each sheet should bear the sender's name and address. **IN PARTICULAR,** requests for TECHNICAL ADVICE should not be on the same sheets as ORDERS FOR SPARE PARTS.

MATCHLESS MOTOR CYCLES,  
PLUMSTEAD, LONDON, S.E.18.

---

**NOTE**

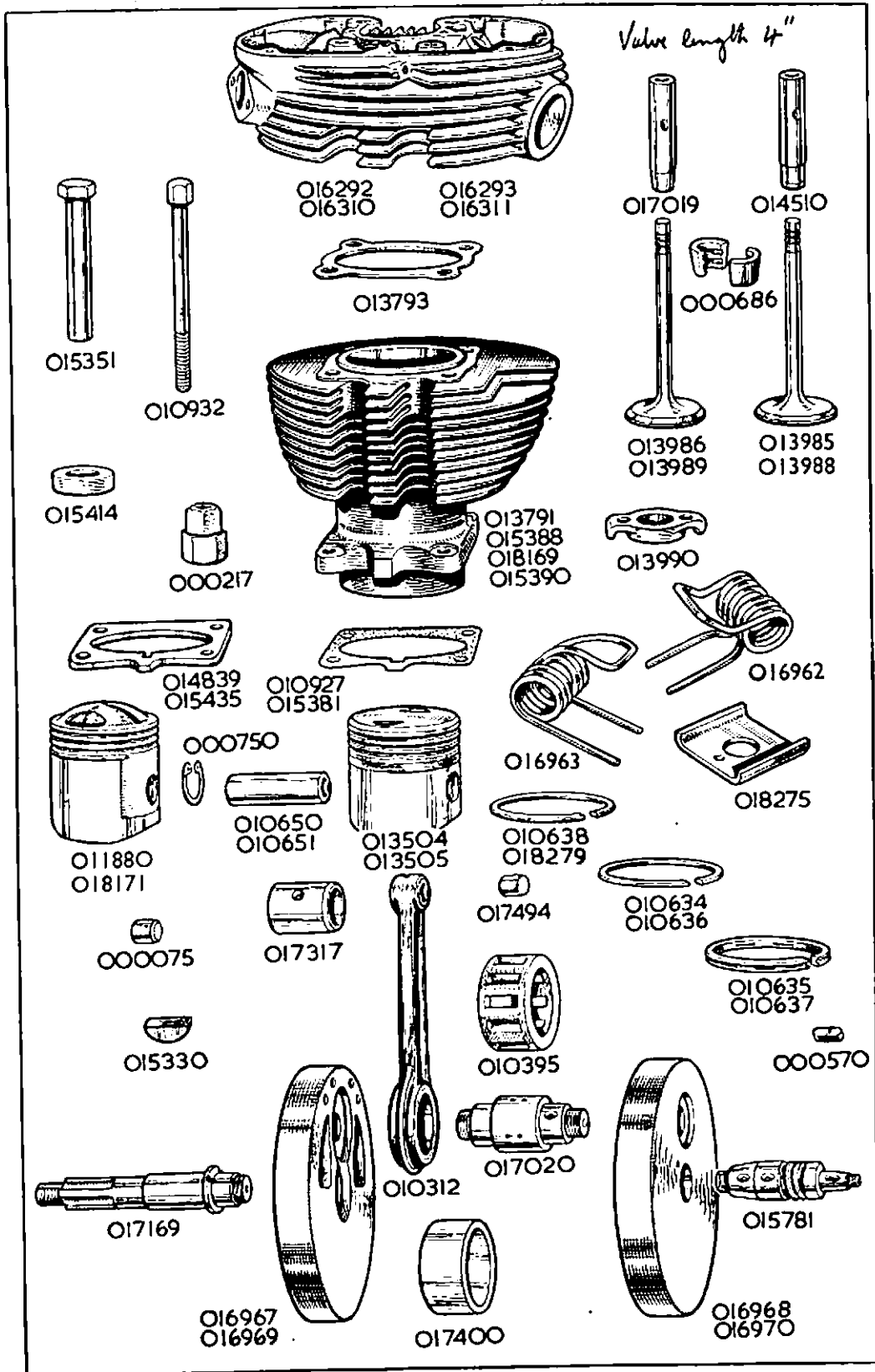
The numbers, in brackets, that appear in the "Description" columns relate to the numbered foot notes regarding items so specially indicated.

The quantities per machine of each item are entered in the "Qty." columns. "R" indicates as may be required.

The illustrations are not to scale and are not necessarily accurate in detail.

Some items are not illustrated.

**ALL PRICES, EXCEPT THOSE MARKED \*,  
ARE SUBJECT TO 20% INCREASE.**



## ENGINE SECTION.

PART NUMBER.	DESCRIPTION.	QTY.	USED ON.	PRICE EACH £ s. d.
<b>CYLINDER.</b>				
013791 ...	Barrel, cylinder.....	1	G3L, G3LS ...	2 15 0
015388 ...	Barrel, cylinder.....	1	G3LC, G3LCS	3 15 0
018169 ...	Barrel, cylinder.....	1	G80, G80S ...	3 5 0
015390 ...	Barrel, cylinder.....	1	G80C, G80CS	4 5 0
014839 ...	Plate, compression, $\frac{1}{16}$ in. thick, not Std. fitting (15)....	1	G3LC, G3LCS	2 0
015435 ...	Plate, compression, $\frac{1}{8}$ in. thick, not Std. fitting (15)....	1	G80C, G80CS	2 9
010927 ...	Washer, paper, cylinder base.....	1	G3L, G3LS, G80, G80S ...	1
015381 ...	Washer, paper, cylinder base.....	1	G3LC, G3LCS, G80C, G80CS	1
015381 ...	Washer, paper, compression plate.....	1	G3LC, G3LCS G80C, G80CS	1
000217 ...	Nut, retaining cylinder to crankcase.....	4	G3L, G3LS, G80, G80S ...	7
015351 ...	Nut, sleeve, retaining cylinder head and barrel to crankcase.....	4	G3LC, G3LCS, G80C, G80CS	2 9
015414 ...	Spacer, $\frac{1}{2}$ in. long, for cylinder head sleeve nut.....	4	G80C, G80CS	2
000008 ...	Washer, plain, for cylinder head sleeve nut.....	4	G3LC, G3LCS	1
Note 15 ...	Compression plate used to obtain medium compression ratio when high compression piston is fitted.			
<b>CYLINDER HEADS.</b>				
016852 ...	Head, cylinder, with valve guides.....	1	G3L, G3LS ...	6 5 7
016853 ...	Head, cylinder, with valve guides.....	1	G3LC, G3LCS	6 13 2
016854 ...	Head, cylinder, with valve guides.....	1	G80, G80S ...	6 12 8
016855 ...	Head, cylinder, with valve guides.....	1	G80C, G80CS	7 1 1
016292 ...	Head, cylinder, less valve guides.....	1	G3L, G3LS ...	5 17 5
016310 ...	Head, cylinder, less valve guides.....	1	G3LC, G3LCS	6 5 0
016293 ...	Head, cylinder, less valve guides.....	1	G80, G80S ...	6 4 6
016311 ...	Head, cylinder, less valve guides.....	1	G80C, G80CS	6 12 11
010932 ...	Bolt, securing head to barrel, $3\frac{3}{8}$ ins. by $\frac{5}{8}$ in. by 20 ...	4	G3L, G3LS, G80, G80S ...	1 4
000010 ...	Washer, plain, for head securing bolt.....	4	G3L, G3LS, G80, G80S ...	1
013793 ...	Gasket, for cylinder head.....	1	G3L, G3LS, G80, G80S ...	1 4
000291 ...	Stud, fixing carburetter, 2 ins. by $\frac{7}{16}$ in. by 22 and 26...	2	All ...	4
000004 ...	Nut, for carburetter stud.....	2	All ...	3
<b>ENGINE VALVES.</b>				
013985 ...	Valve, inlet.....	1	All 350 ...	10 8
013988 ...	Valve, inlet.....	1	All 500 ...	14 0
013986 ...	Valve, exhaust.....	1	All 350 ...	12 4
013989 ...	Valve, exhaust.....	1	All 500 ...	14 0
016963 ...	Spring, for valve, wide prong.....	2	All ...	6 6
016962 ...	Spring, for valve, narrow prong.....	2	All ...	6 6
013990 ...	Collar, for valve spring.....	2	All ...	4 3
018275 ...	Seat, for valve spring.....	2	All ...	6
000686 ...	Collet, for valve (each in two pieces).....	2	All ...	1 2
017019 ...	Guide, for inlet valve.....	1	All ...	4 1
014510 ...	Guide, for exhaust valve.....	1	All ...	4 1

PART NUMBER.	DESCRIPTION.	QTY.	USED ON.	PRICE EACH £ s. d.
<b>PISTONS.</b>				
018301 ...	Piston, complete, normal compression (I).....	1	All 350	1 11 6
016858 ...	Piston, complete, normal compression (I).....	1	All 500	1 19 9
018304 ...	Piston, complete, high compression (I).....	1	All 350	2 6 3
018171 ...	Piston, complete, high compression (I).....	1	All 500	3 2 6
013504 ...	Piston, bare, normal compression.....	1	All 350	18 1
013505 ...	Piston, bare, normal compression.....	1	All 500	1 4 9
011880 ...	Piston, bare, high compression.....	1	All 350	1 12 6
018172 ...	Piston, bare, high compression.....	1	All 500	2 7 6
018279 ...	Ring, compression, 2 $\frac{3}{8}$ ins. by $\frac{1}{8}$ in. (chrome plated)...	1	All 350	3 9
010634 ...	Ring, compression, 2 $\frac{3}{8}$ ins. by $\frac{1}{8}$ in. ....	1	All 350	1 6
010636 ...	Ring, compression, 3 $\frac{1}{4}$ ins. by $\frac{1}{8}$ in. ....	1	All 500	1 9
010638 ...	Ring, compression, 3 $\frac{1}{4}$ ins. by $\frac{1}{8}$ in. (chrome plated)...	1	All 500	4 3
010635 ...	Ring, scraper, 2 $\frac{3}{8}$ ins. by $\frac{1}{8}$ in. ....	1	All 350	2 3
010637 ...	Ring, scraper, 3 $\frac{1}{4}$ ins. by $\frac{1}{8}$ in. ....	1	All 500	2 9
010650 ...	Pin, gudgeon .....	1	All 350	4 11
015987 ...	Pin, gudgeon (special for H.C. piston) .....	1	All 350	5 3
010651 ...	Pin, gudgeon .....	1	All 500	5 3
000750 ...	Circlip, for gudgeon pin.....	2	All	6

Normal compression pistons are fitted to all new machines.

The following oversize parts can be supplied :

018302 ...	Piston, complete, normal compression .020 in. oversize (I) .....	1	All 350	1 11 6
018303 ...	Piston, complete, normal compression .040 in., oversize (I) .....	1	All 350	1 11 6
016938 ...	Piston, complete, normal compression .020 in., oversize (I) .....	1	All 500	1 19 9
016857 ...	Piston, complete, normal compression .040 in., oversize (I) .....	1	All 500	1 19 9
018305 ...	Piston, complete, high compression .020 in., oversize (I) .....	1	All 350	2 6 3
018856 ...	Piston, complete, high compression .020 in., oversize (I) .....	1	All 500	3 2 6
013621 ...	Piston, bare, normal compression .020 in., oversize... ..	1	All 350	18 1
014723 ...	Piston, bare, normal compression .040 in., oversize... ..	1	All 350	18 1
013622 ...	Piston, bare, normal compression .020 in., oversize... ..	1	All 500	1 4 9
015267 ...	Piston, bare, normal compression .040 in., oversize... ..	1	All 500	1 4 9
013711 ...	Piston, bare, high compression .020 in., oversize.....	1	All 350	1 12 6
018857 ...	Piston, bare, high compression .020 in., oversize.....	1	All 500	2 7 6
018280 ...	Ring, compression, 2 $\frac{3}{8}$ ins. plus .020 in. by $\frac{1}{8}$ in. (chrome plated) .....	1	All 350	3 9
016443 ...	Ring, compression, 2 $\frac{3}{8}$ ins. plus .020 in. by $\frac{1}{8}$ in. ....	1	All 350	1 6
018281 ...	Ring, compression, 2 $\frac{3}{8}$ ins. plus .040 in. by $\frac{1}{8}$ in. (chrome plated) .....	1	All 350	3 9
016444 ...	Ring, compression, 2 $\frac{3}{8}$ ins. plus .040 in. by $\frac{1}{8}$ in. ....	1	All 350	1 6
013661 ...	Ring, compression, 3 $\frac{1}{4}$ ins. plus .020 in. by $\frac{1}{8}$ in. ....	1	All 500	1 9
016447 ...	Ring, compression, 3 $\frac{1}{4}$ ins. plus .040 in. by $\frac{1}{8}$ in. ....	1	All 500	1 9
016449 ...	Ring, compression, 3 $\frac{1}{4}$ ins. plus .020 in. by $\frac{1}{8}$ in. (chrome plated) .....	1	All 500	4 3
016450 ...	Ring, compression, 3 $\frac{1}{4}$ ins. plus .040 in. by $\frac{1}{8}$ in. (chrome plated) .....	1	All 500	4 3
016445 ...	Ring, scraper, 2 $\frac{3}{8}$ ins. plus .020 in. by $\frac{1}{8}$ in. ....	1	All 350	2 3
016446 ...	Ring, scraper, 2 $\frac{3}{8}$ ins. plus .040 in. by $\frac{1}{8}$ in. ....	1	All 350	2 3
013662 ...	Ring, scraper, 3 $\frac{1}{4}$ ins. plus .020 in. by $\frac{1}{8}$ in. ....	1	All 500	2 9
016448 ...	Ring, scraper, 3 $\frac{1}{4}$ ins. plus .040 in. by $\frac{1}{8}$ in. ....	1	All 500	2 9

Note 1 ... "Piston, complete" includes—Piston, one ordinary compression ring, one chrome plated compression ring, one scraper ring, gudgeon pin and two circlips.

## RE-BORING.

Cylinders may be re-bored to .020 in. or to .040 in. oversize and normal compression pistons (with rings) (one chrome plated) supplied to suit.

350 Model £2 11s. 8d.\* (New gudgeon pins and circlips 7s. 1d.\* extra).

500 Model £3 1s. 2d.\* (New gudgeon pins and circlips 7s. 6d.\* extra).

Cylinders sent for re-boring should be packed in stout cases which will be used by us for their return. Carriage is additional. If a complete machine, or engine, is sent to us for cylinder re-boring, there will be an additional charge, according to the time taken, for dismantling and assembly.

PART NUMBER.	DESCRIPTION.	QTY.	USED ON.	PRICE EACH		
				£	s.	d.

### FLYWHEELS.

016967	... Flywheel, bare, driving side.....	1	All 350	...	1	4	9
016968	... Flywheel, bare, timing side.....	1	All 350	...	1	4	9
016969	... Flywheel, bare, driving side .....	1	All 500	...	1	4	9
016970	... Flywheel, bare, timing side .....	1	All 500	...	1	4	9
015781	... Axle, timing side flywheel.....	1	All	...	...	15	0
017169	... Axle, driving side flywheel .....	1	All	...	1	7	6
015330	... Key, driving side flywheel axle.....	2	All	...	...	...	4
000230	... Nut, timing side flywheel axle .....	1	All	...	...	...	7
000234	... Nut, driving side flywheel axle .....	1	All	...	1	3	
000015	... Screw, lock, timing side flywheel axle nut $\frac{3}{8}$ in. by 3.BA	1	All	...	...	...	1

### CONNECTING ROD.

010312	... Rod, connecting with liner and bush.....	1	All	...	1	18	9
017400	... Liner, for big-end bearing .....	1	All	...	...	7	5
017317	... Bush, for gudgeon pin .....	1	All	...	...	4	4
000075	... Roller, crankpin, $\frac{1}{4}$ in. by $\frac{1}{4}$ in. ....	30	All	...	...	...	3
010395	... Cage, for crankpin rollers .....	1	All	...	...	12	4
017020	... Crankpin .....	1	All	...	...	17	4
000233	... Nut, for crankpin .....	2	All	...	1	4	

The following oversize part can be supplied, but we recommend only skilled mechanics should fit same, because it is almost general that the big-end journals and sleeves require "lapping" to ensure a correct fit.

017494	... Roller, crankpin, $\frac{1}{4}$ in. plus .001 in. diameter by $\frac{1}{2}$ in. long	30	All	...	...	...	3
--------	--	----	-----	-----	-----	-----	---

### CRANKCASE.

018318	... Crankcase, complete (2).....	1	G3L, G3LS, G80, G80S	...	5	18	2
016920	... Crankcase, complete (3).....	1	G3LC, G3LCS, G80C, G80CS	...	6	14	3
018860	... Crankcase, driving side only (4) (6).....	1	G3L, G3LS, G80, G80S	...	1	16	6
018861	... Crankcase, driving side only (4) (6).....	1	G3LC, G3LCS, G80C, G80CS	...	2	5	0
018317	... Crankcase, timing side only (5) (6).....	1	G3L, G3LS, G80, G80S	...	4	1	8
016919	... Crankcase, timing side only (5) (6).....	1	G3LC, G3LCS, G80C, G80CS	...	4	9	3
000575	... Plug, drain, for timing side crankcase .....	1	All	...	...	...	6
000485	... Screw, plug, for crankcase oil holes $\frac{1}{4}$ in. by $\frac{1}{4}$ in. by 26	3	All	...	...	...	1
000203	... Washer, fibre, for oil hole screws .....	3	All	...	...	...	1
000576	... Plug, for cylinder oil feed valve .....	1	All	...	...	...	4
010934	... Body, for cylinder oil feed valve.....	1	All	...	1	3	
000021	... Ball ( $\frac{1}{2}$ in. steel), for cylinder oil feed valve .....	1	All	...	...	...	1
000701	... Spring, for cylinder oil feed valve .....	1	All	...	...	...	3
000300	... Stud, for cylinder base, $1\frac{3}{8}$ in. by $\frac{3}{8}$ in. by 26 and 20	4	G3L, G3LS, G80, G80S	...	...	...	4
015350	... Stud, for cylinder base, $7\frac{7}{8}$ in. by $\frac{3}{8}$ in. with top end threaded $\frac{3}{8}$ in. by 26 and bottom end threaded $\frac{7}{16}$ in. by 18.....	4	G3LC, G3LCS, G80C, G80CS	...	4	9	
000577	... Peg, dowel, locating timing gear cover.....	2	All	...	...	...	1
017182	... Washer, paper, for timing gear cover .....	1	All	...	...	...	3
018306	... Cover, timing gear, with bushes .....	1	All	...	1	6	8
000482	... Screw, fixing timing gear cover, $1\frac{1}{8}$ in. by $\frac{1}{4}$ in. by 26	5	All	...	...	...	3
000765	... Cap, in timing gear cover, for cam bush.....	1	All	...	...	...	4

PART NUMBER.	DESCRIPTION.	QTY.	USED ON.	PRICE EACH £ s. d.
--------------	--------------	------	----------	-----------------------

### CRANKCASE—continued.

016864 ...	Cover, magneto chaincase .....	1	All ... ..	15 6
000455 ...	Screw, fixing magneto chaincase cover, $\frac{1}{8}$ in. by 2.BA	8	All ... ..	3

Note 2 ... Comprises items 010937 and 018317.

Note 3 ... Comprises items 015969 and 016919.

Note 4 ... Comprises crankcase half and two cylinder base studs.

Note 5 ... Comprises crankcase half, bush for timing side flywheel axle with peg, two camshaft bushes, cylinder oil feed valve assembled, two cylinder base studs and two dowel pins for the timing cover.

Note 6 ... Halves of crankcases must be "matched" in the Factory. Therefore it is necessary to send the sound half of a crankcase when ordering a new half.

### CRANKCASE BEARINGS.

017489 ...	Bush, timing side flywheel axle.....	1	All .. ...	9 0
012233 ...	Peg, securing timing side bush.....	1	All ... ..	1
017191 ...	Ball bearing, for driving side axle, 1 in. by $2\frac{1}{4}$ ins. by $\frac{5}{8}$ in.	2	All ... ..	14 4
010628 ...	Washer, spacing, between ball bearings (SKEFKO) (7)...	1	All ... ..	4
014830 ...	Washer, spacing, between ball bearings (HOFFMAN) (7)	1	All ... ..	4
017194 ...	Collar, spacing, between ball bearings.....	1	All ... ..	3
000651 ...	Bush, for exhaust cam, in crankcase .....	1	All ... ..	2 10
000652 ...	Bush, for exhaust cam, in timing cover.....	1	All ... ..	2 10
000651 ...	Bush, for inlet cam, in crankcase .....	1	All ... ..	2 10
000651 ...	Bush, for inlet cam in timing cover .....	1	All ... ..	2 10

Note 7 ... The standard make of ball bearing used on the driving side flywheel axle is "SKEFKO." Those bearings are in short supply, and it has been necessary to use ball bearings of American "HOFFMAN" make.

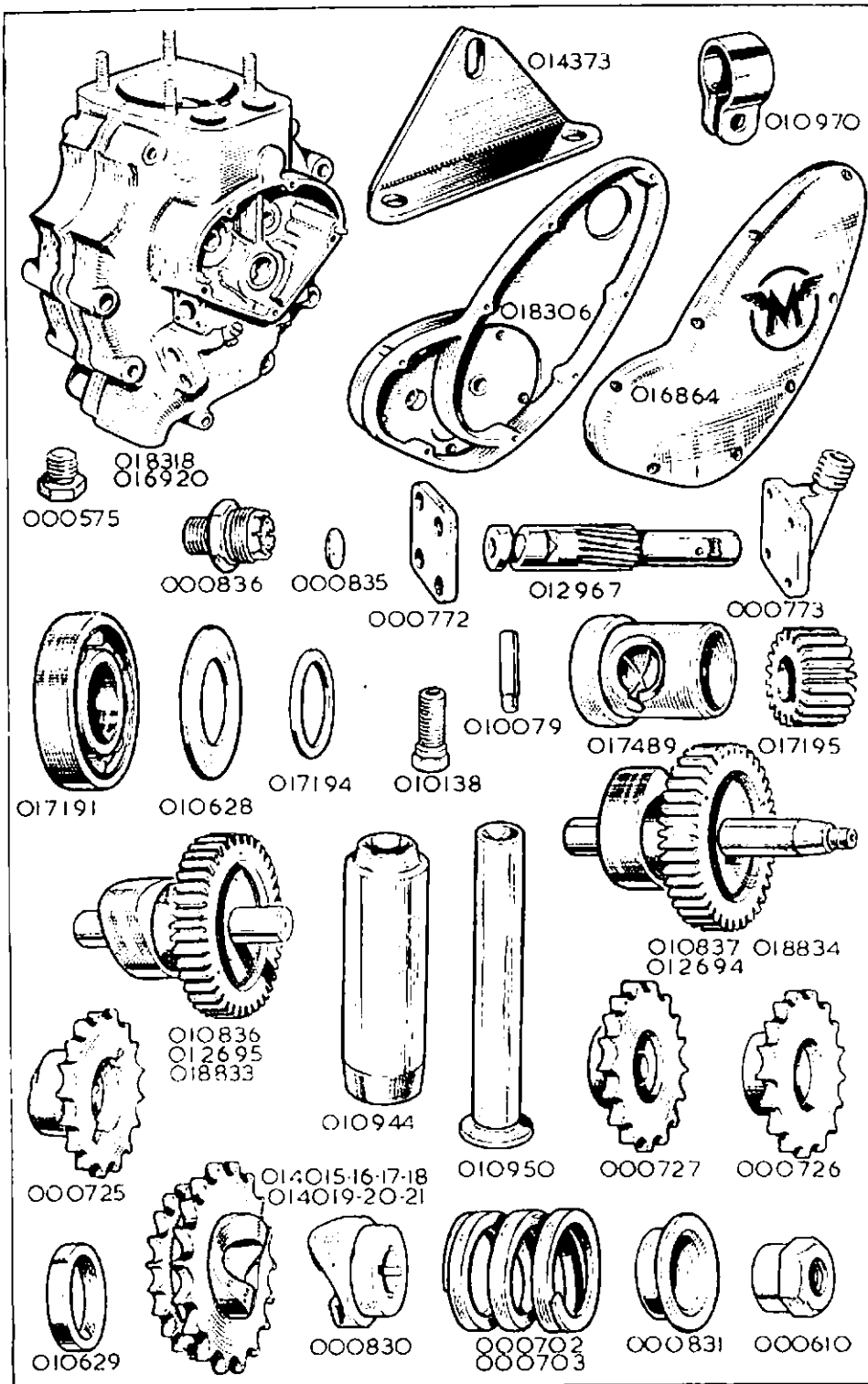
Spacing washer 010628 is used with "SKEFKO" bearings, and spacing washer 014830 is used with "HOFFMAN" bearings.

If one "SKEFKO" and one "HOFFMAN" bearing are fitted, as may occur as the result of fitting an "odd" replacement bearing, then the "HOFFMAN" bearing must have a spacing washer 014830 against it and the spacing collar 017194 should be fitted so that it abuts against the "SKEFKO" bearing.

### CRANKCASE BOLTS.

010824 ...	Stud, front, top position, $6\frac{3}{4}$ ins. by $\frac{1}{8}$ in. by 26 and 26	1	All ... ..	8
000278 ...	Stud, front, centre position, $4\frac{9}{16}$ ins. by $\frac{1}{8}$ in. by 26 and 26	1	All ... ..	6
000277 ...	Stud, front, bottom position, $4\frac{3}{8}$ ins. by $\frac{1}{8}$ in. by 26 and 26	1	All ... ..	6
000261 ...	Stud, bottom, rear position, $4\frac{1}{8}$ ins. by $\frac{1}{8}$ in. by 26 and 26	1	All ... ..	6
	For the "Stud, bottom, front position" (which also unites the front and rear frames) see FRAME.			
000278 ...	Stud, rear, top position, $4\frac{9}{16}$ ins. by $\frac{1}{8}$ in. by 26 and 26	1	All ... ..	6
	For the "Stud, rear, centre position," see "000316 stud, fixing centre of chaincase," in FRONT CHAINCASE.			
014147 ...	Bolt, rear, bottom position, $4\frac{1}{2}$ ins. by $\frac{1}{8}$ in. by 26...	1	All ... ..	6
000011 ...	Washer, plain, for $\frac{1}{8}$ in. studs and bolt .....	8	All ... ..	1
000005 ...	Nut, $\frac{1}{8}$ in. by 26, for bottom rear stud .....	2	All ... ..	3
000004 ...	Nut, $\frac{1}{8}$ in. by 26, for all $\frac{1}{8}$ in. studs and bolt .....	9	All ... ..	3





This scan is explicit for non-commercial use and is not intended for financial or material gain by anyone

PART NUMBER.	DESCRIPTION.	QTY.	USED ON.	PRICE EACH £ s. d.
<b>OIL PUMP.</b>				
012967	Plunger, oil pump	1	All	11 5
010138	Screw, guide, oil pump plunger	1	All	1 3
010079	Pin, guide screw, oil pump plunger	1	All	8
000773	Cap, front end, oil pump	1	All	2 4
000772	Cap, rear end, oil pump	1	All	10
000582	Washer, paper, pump end cap	2	All	1
000015	Screw, fixing front end cap, oil pump, $\frac{3}{8}$ in. by 3.BA	4	All	1
000591	Bolt, fixing rear end cap, oil pump, $\frac{3}{8}$ in. by 3.BA	4	All	3
<b>RELEASE VALVE.</b>				
000836	Body, release valve	1	All	1 7
000835	Diaphragm, for release valve	1	All	3
<b>TIMING GEAR.</b>				
010837	Camshaft, exhaust	1	All	2 0
012694	Camshaft, exhaust (high lift) (for Competition use only) <sup>2</sup>	1	All	5 0
018834	Camshaft, exhaust (for Racing only) <sup>2</sup>	1	All	7 6
016847	Washer, shim, .005 in. thick, for exhaust Camshaft	R.	All	2
016848	Washer, shim, .010 in. thick, for exhaust Camshaft	R.	All	2
010836	Camshaft, inlet	1	All	19 3
012695	Camshaft, inlet (high lift) (for Competition use only) <sup>2</sup>	1	All	10 10
018833	Camshaft inlet (for Racing only) <sup>2</sup>	1	All	5 0
017195	Pinion, timing, on flywheel axle	1	All	7 7
000570	Key, for timing pinion	1	All	4
000221	Nut, retaining timing pinion to axle (left hand thread)	1	All	4
<sup>2</sup> Not fitted to new cycles unless specified.				
<b>TAPPETS.</b>				
010950	Tappet, bare	2	All	5 4
010944	Guide, for tappet	2	All	4 1
<b>PUSH RODS.</b>				
018314	Rod, long, push, complete (8)	2	All Touring and 350 Comp.	7 1
018315	Rod, long, push, complete (8)	2	Comp. 500	7 1
018312	Rod, long, push, bare (9)	2	All Touring and 350 Comp.	3 5
018313	Rod, long, push, bare (9)	2	Comp. 500	3 5
000721	End, ball, bottom of long push rod	2	All	1 7
000592	Screw, adjusting, top of long push rod	2	All	1 7
000216	Nut, lock, push rod adjusting screw	2	All	6
Note 8	" ROD, LONG, PUSH, COMPLETE " comprises—one long push rod with top sleeve end, one bottom, ball end and one adjusting screw with lock nut.			
Note 9	In construction the top sleeve end is first pressed on the push rod and then both sleeve end and rod are tapped, in one operation, to accommodate the adjusting screw. It is not possible to supply the bare rod and the top sleeve end as separate spares. Therefore a " Rod, long, push, bare " includes the top sleeve end fitted to it.			
<b>PUSH ROD COVER TUBES.</b>				
010952	Tube, cover, for long push rod	2	All	4 1
010672	Gasket, rubber, top of cover tube	2	All	6
016944	Washer, metal, $\frac{3}{4}$ in. thick, located below 010672 rubber gasket	2	All	4
011087	Washer, metal, $\frac{3}{4}$ in. thick, located over 010672 rubber gasket when no compression plate fitted	2	All	4
011087	Washer, metal, $\frac{3}{4}$ in. thick, located over 010672 rubber gasket when compression plate fitted, (two in each location)	4	All 350	4
014603	Washer, metal, $\frac{3}{4}$ in. thick, located over 010672 rubber gasket when compression plate fitted	2	All 500	4
000691	Gland, rubber, bottom of cover tube	2	All	4

PART NUMBER.	DESCRIPTION.	QTY.	USED ON.	PRICE EACH £ s. d.
--------------	--------------	------	----------	-----------------------

### ROCKER BOX.

014159	... Rocker box, assembled (10).....	1	G3L, G3LS, G80, G80S	5 0 5
015457	... Rocker box, assembled (10).....	1	G3LC, G3LCS G80C, G80CS	5 1 2
014364	... Rocker box, with bushes (11) .....	1	G3L, G3LS, G80, G80S	2 3 2
015458	... Rocker box, with bushes (11).....	1	G3LC, G3LCS, G80C, G80CS	2 3 2
013958	... Rocker box, bare.....	1	G3L, G3LS, G80, G80S	1 13 0
015422	... Rocker box, bare.....	1	G3LC, G3LCS, G80C, G80CS	1 13 0
013984	... Gasket, for rocker box.....	1	All	10
017103	... Bush, for rocker box.....	4	All	2 5
013980	... Cover, side, for rocker box.....	1	G3L, G3LS, G80, G80S	5 9
015678	... Cover, side, for rocker box.....	1	G3LC, G3LCS, G80C, G80CS	6 6
014229	... Fillet, rubber, rocker box side cover.....	1	All	4
000251	... Stud, fixing rocker box side cover $1\frac{1}{8}$ in. by 2.BA .....	3	All	3
000623	... Nut, for rocker box side cover stud.....	3	All	7
000205	... Washer, fibre, for rocker box side cover stud .....	3	All	1
015353	... Bolt, fixing rocker box, short, $1\frac{1}{8}$ ins. by $\frac{3}{8}$ in. by 22....	4	All	5
015354	... Bolt, fixing rocker box, long, $2\frac{1}{8}$ ins. by $\frac{3}{8}$ in. by 22....	2	All	6
015355	... Bolt, fixing rocker box, long, $2\frac{3}{8}$ ins. by $\frac{3}{8}$ in. by 22 with extension $\frac{3}{8}$ in. by 26.....	2	All	1 6
015356	... Bolt, fixing rocker box, centre position $3\frac{3}{8}$ ins. by $\frac{3}{8}$ in. by 22 .....	1	All	7
000011	... Washer, plain, rocker box fixing bolts .....	9	All	1
Note 10	Includes all parts listed in this paragraph (except gasket, fixing bolts and washers), and all those listed under "OVERHEAD ROCKERS" and "EXHAUST VALVE LIFTER."			
Note 11	This is a "bare" rocker box to which is fitted four 017103 bushes and two 012722 felt rings.			

### OVERHEAD ROCKERS.

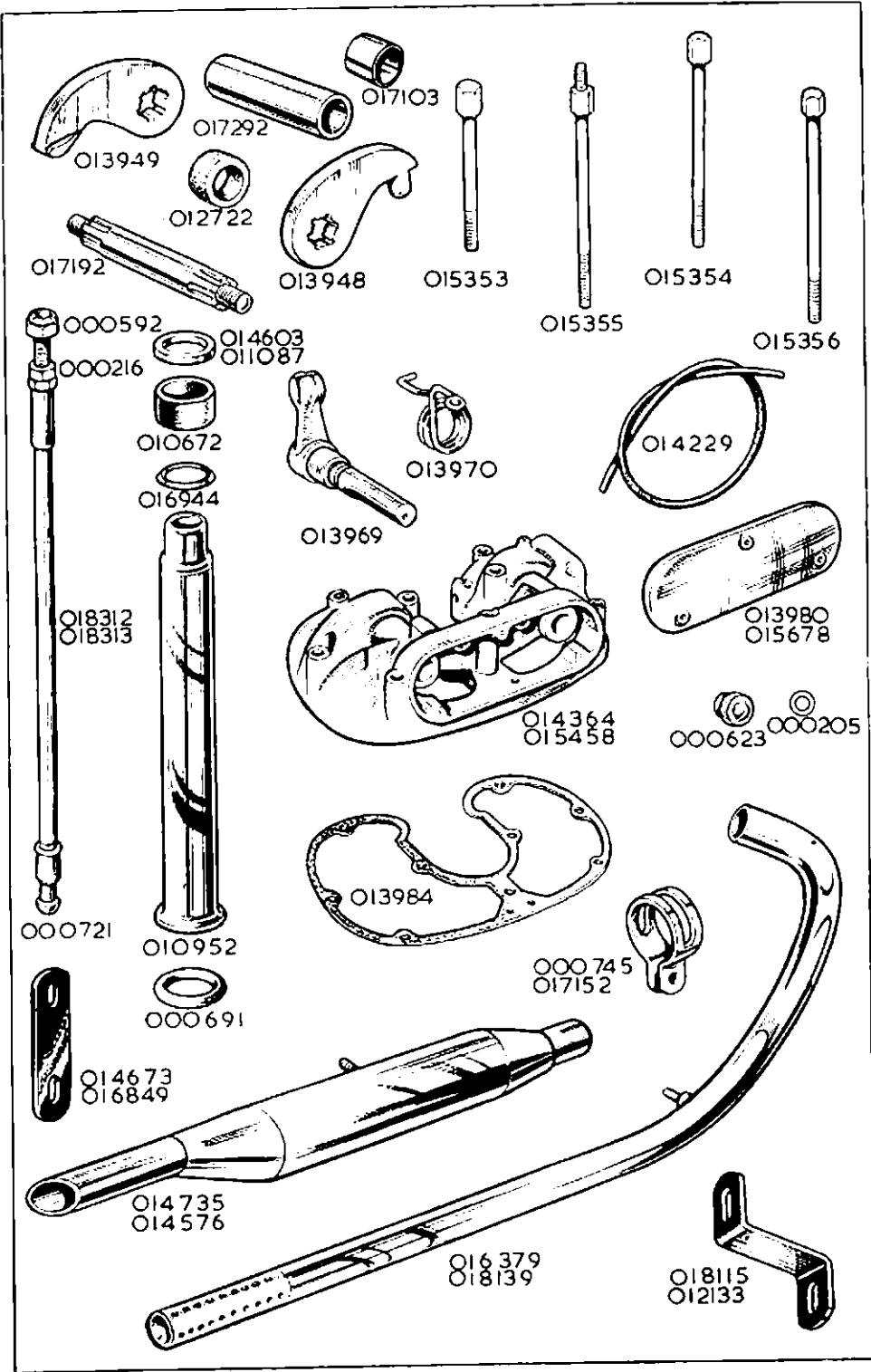
017192	... Axle, rocker.....	2	All	5 9
017292	... Sleeve, for rocker axle .....	2	All	4 11
013949	... Arm, rocker, valve end, inlet and exhaust.....	2	All	4 1
013948	... Arm, rocker, tappet end, inlet and exhaust.....	2	All	3 8
000010	... Washer, plain, for rocker axle.....	4	All	1
000003	... Nut, for rocker axle .....	4	All	3
012722	... Ring, felt, for rocker axle sleeve.....	2	All	3

### EXHAUST VALVE LIFTER.

013969	... Lever, exhaust lifter.....	1	All	9 3
014523	... Ring, sealing, for valve lifter lever.....	1	All	4
013970	... Spring, for valve lifter lever.....	1	All	4
000451	... Screw, anchor, valve lifter spring, $\frac{1}{2}$ in. by 2.BA. ....	1	All	3
000039	... Washer, plain, valve lifter spring screw .....	1	All	1

### ROCKER BOX STAY.

014373	... Stay, for rocker box.....	1	All	1 3
000004	... Nut, fixing stay to rocker box bolt extension .....	2	All	3
000011	... Washer, plain, rocker box bolt extension .....	2	All	1
010970	... Clip, for rocker box stay.....	1	All	10



This scan is explicit for non-commercial use and is not intended for financial or material gain by anyone

PART NUMBER.	DESCRIPTION.	QTY.	USED ON.	PRICE EACH £ s. d.
--------------	--------------	------	----------	-----------------------

**ROCKER BOX STAY—continued.**

000363	... Bolt, for rocker box stay clip, $\frac{3}{8}$ in. by $\frac{1}{8}$ in. by 26	1	All	4
000011	... Washer, plain, rocker box stay clip bolt	1	All	1
000004	... Nut, rocker box stay clip bolt	1	All	3

**GASKETS.**

Engine gaskets are supplied as separate spares and in complete sets.  
Single gaskets are listed in the groups to which they belong.  
Gaskets in sets are listed on page 61.

**EXHAUST PIPE AND SILENCER SECTION.**

PART NUMBER.	DESCRIPTION.	QTY.	USED ON.	PRICE EACH £ s. d.
--------------	--------------	------	----------	-----------------------

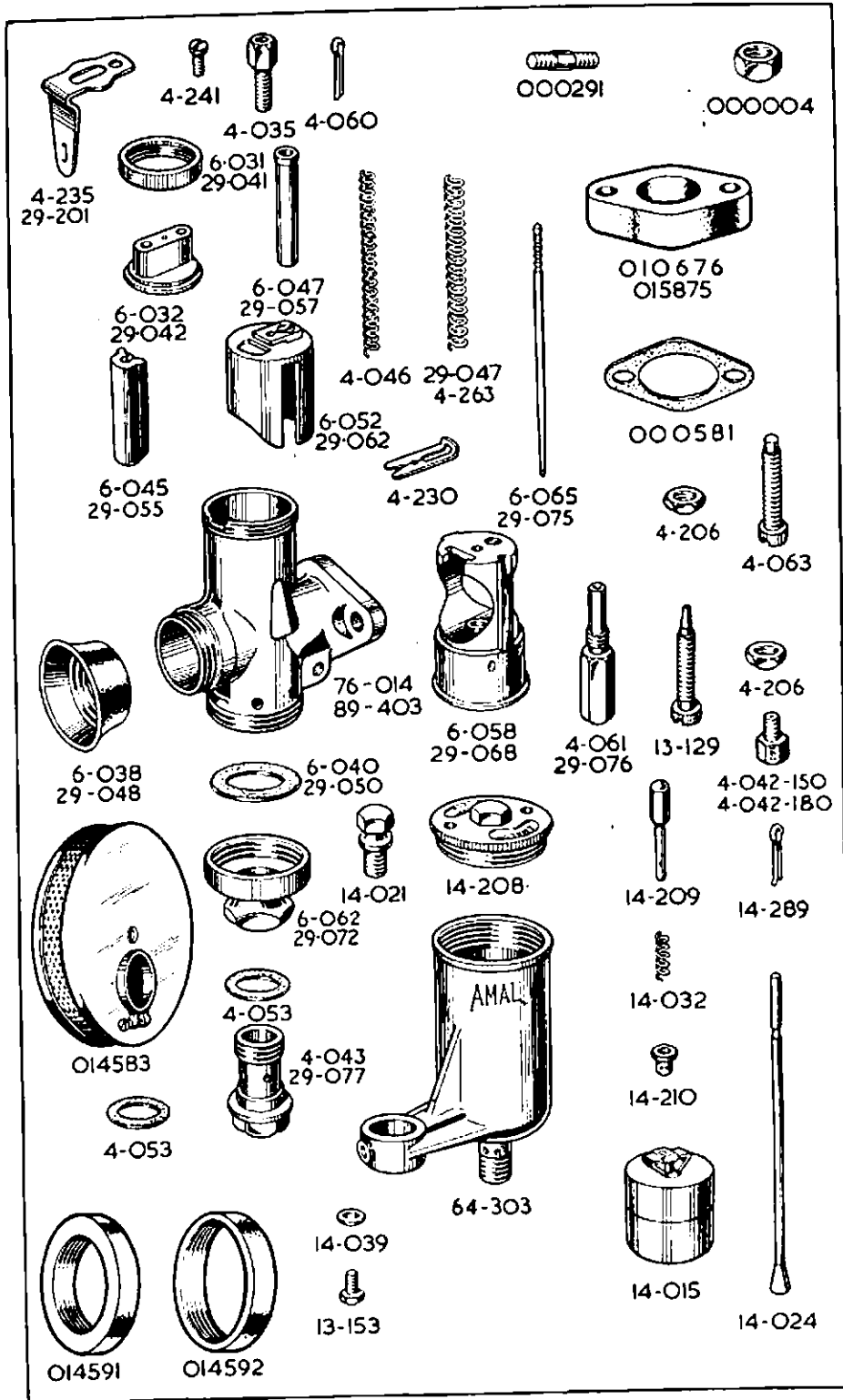
**EXHAUST PIPES.**

016379	... Pipe, exhaust, bare	1	G3L, G3LS	5 4
018547	... Pipe, exhaust, bare	1	G3LC	2 6
018146	... Pipe, exhaust, bare	1	G3LCS	9 2
018139	... Pipe, exhaust, bare	1	G80, G80S	6 5
018548	... Pipe, exhaust, bare	1	G80C	4 3
018148	... Pipe, exhaust, bare	1	G80CS	11 8
016467	... Pipe, extension, for exhaust pipe (12)	1	G3LC, G3LCS G80C, G80CS	1 1
012133	... Stay, for exhaust pipe	1	G3L, G3LS	8
018115	... Stay, for exhaust pipe	1	G80, G80S	9
014747	... Stay, for exhaust pipe	1	G3LC, G80C	8
018278	... Stay, for exhaust pipe	1	G3LCS, G80CS	8
000004	... Nut, fixing exhaust pipe to stay	1	All	3
000174	... Washer, plain, exhaust pipe fixing nut	1	All	1
000192	... Washer, spring, exhaust pipe fixing nut	1	All	1

Note 12 This is an optional extra, and fits in place of the standard silencer.

**SILENCERS.**

014735	... Silencer, bare	1	G3L, G3LS, G3LC, G80C, G3LCS, G80CS	10 7
014576	... Silencer, bare	1	G80, G80S	11 8
017152	... Clip, clamping silencer to exhaust pipe	1	G3L, G3LS G3LC, G3LCS, G80C, G80CS	7
000745	... Clip, clamping silencer to exhaust pipe	1	G80, G80S	7
000363	... Bolt, for silencer clip $\frac{3}{8}$ in. by $\frac{1}{8}$ in. by 26	1	All	4
000174	... Washer, plain, for silencer clip bolt	1	All	1
000004	... Nut, for silencer clip bolt	1	All	3
014673	... Stay, for silencer	1	G3LS, G80S	6
016849	... Stay, for silencer	1	G3LCS, G80CS	8
000004	... Nut fixing silencer to stay	1	All	3
000174	... Washer, plain, for silencer fixing nut	1	All	1
000192	... Washer, spring, for silencer fixing nut	1	All	1
000004	... Nut, fixing silencer stay to frame	1	G3LS, G3LCS, G80S, G80CS	3
000174	... Washer, plain, for silencer stay fixing nut	1	ditto	1
000192	... Washer, spring, for silencer stay fixing nut	1	ditto	1



This scan is explicit for non-commercial use and is not intended for financial or material gain by anyone

PART NUMBER.	DESCRIPTION.	QTY.	USED ON.	PRICE EACH £ s. d.
--------------	--------------	------	----------	-----------------------

### FRONT WHEEL BEARINGS.

012825	... Spindle, with roller bearings, for front wheel.....	1	All	1 15 6
010579	... Oil-seal, for front hub bearings .....	2	All	5
017219	... Ring, spring, locating front hub bearings.....	1	All	3
018093	... Cup, for front hub bearing oil-seal.....	1	All	3
017221	... Ring, spacing, for front hub bearing oil-seal.....	1	All	6
018096	... Ring, retaining front hub bearing oil-seals.....	3	All	1
017223	... Nut, lock, for front hub bearing adjusting ring.....	1	All	2 0
017224	... Ring, adjusting, for front hub bearing.....	1	All	2 5
017003	... Nut, locating front brake cover plate.....	1	All	4
017222	... Washer, locating, front brake cover plate.....	1	All	3
018071	... Nut, outside, securing front brake cover plate.....	1	All	2 2
000001	... Nut, front wheel spindle, left side.....	1	All	4
000008	... Washer, plain, front wheel spindle, left side.....	1	All	1

### REAR WHEEL. (Home Models)

THE COMPLETE WHEELS LISTED BELOW COMPRISE :—

Rim, spokes, nipples, hub, grease nipple and all bearings assembled, but does NOT include the centre solid spindle, washers, spacers, nuts, brake parts, sprocket and brake drum, speedometer drive and tyre.

015566	... Wheel, rear, complete, with all fittings.....	1	G3L, G3LS, G80, G80S	5 14 5
016958	... Wheel, rear, complete, with all fittings.....	1	G3LC, G3LCS, G80C, G80CS...	6 14 5

THE BARE WHEELS LISTED BELOW COMPRISE :—

Rim, spokes, nipples and hub.

015558	... Wheel, rear, bare, less all fittings.....	1	G3L, G3LS, G80, G80S	3 18 11
016957	... Wheel, rear, bare, less all fittings.....	1	G3LC, G3LCS, G80C, G80CS...	4 18 11
018245	... Rim, rear, 19 ins. by 2½ ins.....	1	G3L, G3LS, G80, G80S	19 9
018247	... Rim, rear, 19 ins. by 3 ins.....	1	G3LC, G3LCS, G80C, G80CS...	19 9
011012	... Spoke, rear, left or right, 8½ ins. by 7 G by 9 G.....	40	G3L, G3LS, G80, G80S	3
017097	... Spoke, rear, left or right, 8½ ins. by 6 G.....	40	G3LC, G3LCS, G80C, G80CS...	6
011013	... Nipple, rear, left or right, .250 in. by 9 G.....	40	G3L, G3LS, G80, G80S	1
012472	... Nipple, rear, left or right, .300 in. by 6 G.....	40	G3LC, G3LCS, G80C, G80CS...	4
016964	... Hub, rear wheel, shell only.....	1	All	2 5 7
000051	... Nipple, grease, for rear wheel hub.....	1	All	5
011090	... Tape, for 19 ins. rear rim.....	1	All	1 9*
011707	... Bolt, security, for rear wheel.....	2	G3LC, G3LCS, G80C, G80CS...	4 0

### REAR WHEEL. (Export Models)

015565	... Wheel, rear, with all fittings, chrome rim—red centre	1	G3L, G3LS, G80, G80S	6 4 5
015556	... Wheel, rear, bare (less fittings)	1	ditto	4 8 11
012876	... Rim, rear, chrome—red centre	1	ditto	1 8 1

All other parts as Home Models.

WHEN IN DOUBT REGARDING THE NAMES AND PART NUMBERS OF THE PARTS YOU REQUIRE, PLEASE SEND THE OLD PARTS TO SERVE AS PATTERNS.

PART NUMBER.	DESCRIPTION.	QTY.	USED ON.	PRICE EACH
				£ s. d.

### JETS.

6-058	...	Choke, or jet barrel.....	1	All 350	...	7	6*
29-068	...	Choke, or jet barrel.....	1	All 500	...	10	0*
4-061	...	Needle jet.....	1	All 350	...	2	6*
29-076	...	Needle jet.....	1	All 500	...	2	6*
4-042-150	...	Jet, main, size 150 (no air cleaner fitted).....	1	All 350	...	8	8*
4-042-180	...	Jet, main, size 180 (no air cleaner fitted).....	1	All 500	...	8	8*
6-065	...	Needle, taper, for needle jet.....	1	All 350	...	2	0*
29-075	...	Needle, taper, for needle jet.....	1	All 500	...	2	0*
4-230	...	Clip, for jet taper needle.....	1	All	...	6	6*
4-060	...	Pin, split, locating taper needle clip.....	1	All	...	1	1*
13-129	...	Screw, for pilot jet air adjustment.....	1	All	...	9	9*
4-206	...	Nut, lock, for pilot jet air screw.....	1	All	...	2	2*

We can also supply the following alternative jets.

4-042-130	...	Jet, main, size 130.....	1	All	...	8	8*
4-042-140	...	Jet, main, size 140.....	1	All	...	8	8*
4-042-160	...	Jet, main, size 160.....	1	All	...	8	8*
4-042-170	...	Jet, main, size 170.....	1	All	...	8	8*

### VALVES (CARBURETTER).

6-052	...	Valve, throttle, size 6 by 4.....	1	All 350	...	6	0*
29-062	...	Valve, throttle, size 29 by 4.....	1	All 500	...	6	6*
29-047	...	Spring, for throttle valve.....	1	All 350	...	4	4*
4-263	...	Spring, for throttle valve.....	1	All 500	...	4	4*
4-063	...	Screw, stop, for throttle valve.....	1	All	...	9	9*
4-206	...	Nut, lock, for throttle stop screw.....	1	All	...	2	2*
6-045	...	Valve, air.....	1	All 350	...	3	9*
29-055	...	Valve, air.....	1	All 500	...	4	0*
6-047	...	Guide, tubular, for air valve spring.....	1	All 350	...	1	0*
29-057	...	Guide, tubular, for air valve spring.....	1	All 500	...	1	3*
4-046	...	Spring, for air valve.....	1	All	...	4	4*

### AIR CLEANER. (This is optional extra equipment).

014583	...	Cleaner, air.....	1	All	...	1	0 0*
014591	...	Adaptor, for air cleaner.....	1	All 350	...	1	6*
014592	...	Adaptor, for air cleaner.....	1	All 500	...	1	6*
016982	...	Set of air cleaner elements comprising filter element and two fabric end gaskets.....	1	All	...	8	0*

When an AIR CLEANER is fitted it is essential to :—

(a) Use an adaptor in order to fit the cleaner to carburetter intake. (014583 does not include the adaptor.)

(b) Fit a smaller jet, viz :—  
for 350 use jet 4-042-130 (size 130),  
for 500 use jet 4-042-160 (size 160).

BY USING GENUINE SPARES YOU ARE ASSURED THEY  
WILL FIT ACCURATELY AND GIVE SATISFACTORY SERVICE



## TRANSMISSION SECTION.

PART NUMBER.	DESCRIPTION.	QTY.	USED ON.	PRICE EACH £ s. d.
-----------------	--------------	------	-------------	--------------------------

### ENGINE SPROCKET.

014016	... Sprocket, engine, bare, 16 teeth .....	1	G3LC, G3LCS	4 4
014018	... Sprocket, engine, bare, 18 teeth .....	1	G3L, G3LS, G80C, G80CS	4 4
014021	... Sprocket, engine, bare, 21 teeth .....	1	G80, G80S	4 10
010629	... Spacer, collar, for engine sprocket.....	1	All	2
000702	... Spring, engine shock absorber .....	1	All 350	2 2
000703	... Spring, engine shock absorber .....	1	All 500	3 1
000830	... Cam, engine shock absorber.....	1	All	8 3
000831	... Cap, engine shock absorber spring .....	1	All	1 1
000610	... Nut, lock, engine shock absorber .....	1	All	10
012444	... Washer, felt, between engine sproket and crankcase ...	1	G3LC, G3LCS, G80C, G80CS	4

The following alternative engine sprockets can be supplied.

014015	... Sprocket, engine, bare, 15 teeth .....	1	All	4 4
014017	... Sprocket, engine, bare, 17 teeth .....	1	All	4 4
014019	... Sprocket, engine, bare, 19 teeth .....	1	All	4 10
014020	... Sprocket, engine, bare, 20 teeth .....	1	All	4 10

### MAGNETO DRIVING SPROCKET.

000727	... Sprocket, magneto, on engine camshaft .....	1	All	5 6
000011	... Washer, plain, for camshaft sprocket .....	1	All	1
000004	... Nut, retaining, for camshaft sprocket .....	1	All	3
000726	... Sprocket, magneto, on armature shaft .....	1	All	5 6
140074	... Washer, plain, for armature sprocket.....	1	All	1
171284	... Nut, retaining, for armature shaft sprocket.....	1	All	3

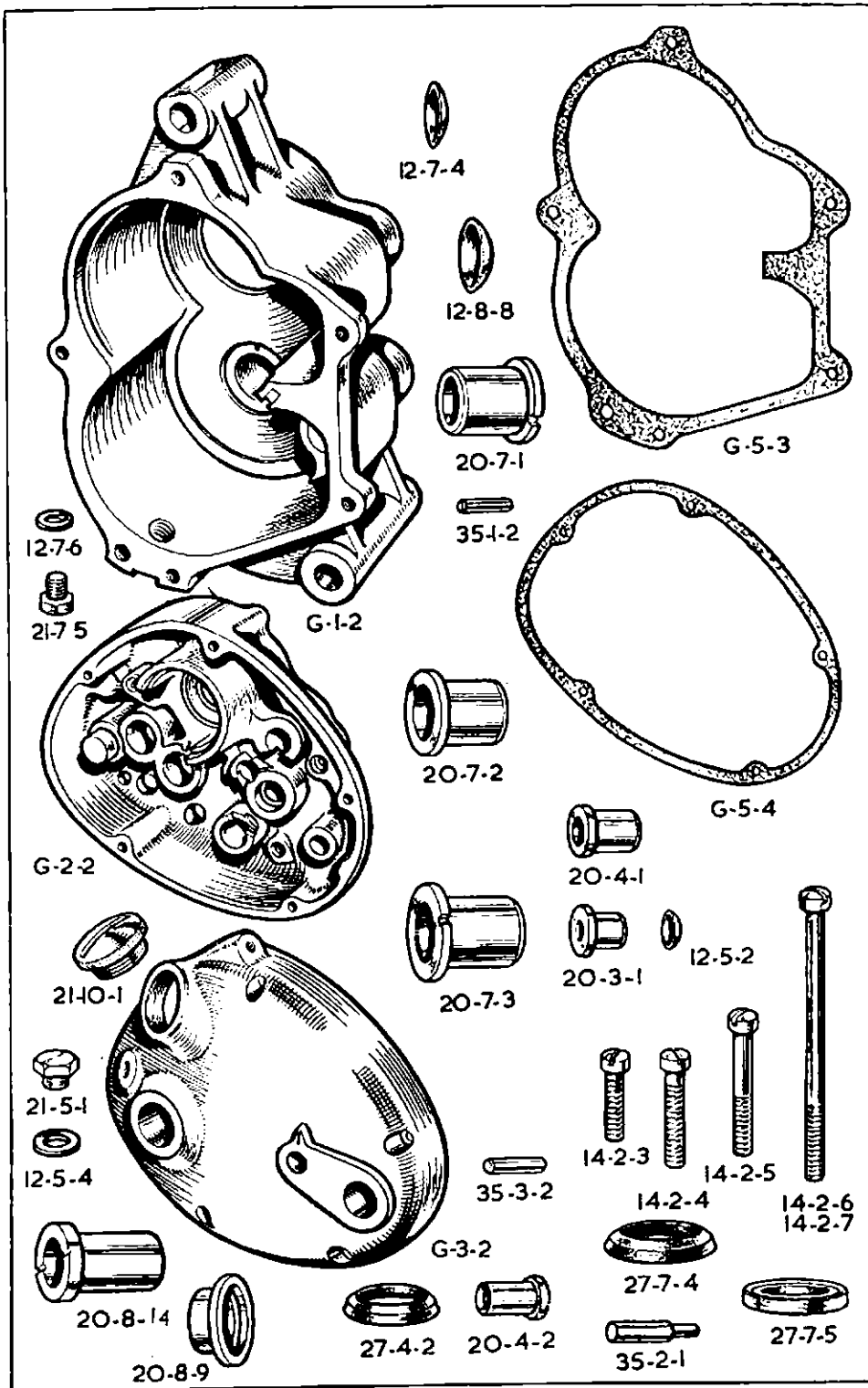
### DYNAMO SPROCKET.

000725	... Sprocket, on dynamo shaft.....	1	All	6 11
000572	... Key, for dynamo sprocket.....	1	All	3
000010	... Washer, plain, for dynamo sprocket nut.....	1	All	1
000164	... Washer, lock, for dynamo sprocket nut.....	1	All	3
000708	... Ring, lock, for dynamo sprocket nut .....	1	All	1
000611	... Nut, retaining, for dynamo sprocket.....	1	All	10

### GEARBOX.

016708	... Gearbox, complete with four plate clutch, foot gear lever and kick-starter lever.....	1	G3L, G3LS	★
016709	... Gearbox, complete with five plate clutch, foot gear lever and kick-starter lever.....	1	G80, G80S	★
018527	... Gearbox, complete with five plate clutch, foot gear lever and kick-starter lever.....	1	G3LC, G80C	★
016711	... Gearbox, complete with five plate clutch, foot gear lever and kick-starter lever.....	1	G3LCS, G80CS	★

★ Price on application.



PART NUMBER.	DESCRIPTION.	QTY.	USED ON.	PRICE EACH £ s. d.
--------------	--------------	------	----------	-----------------------

### CHAINS.

017381 ...	Chain, front, 65 links, $\frac{1}{2}$ in. by 305 in. (13).....	1	G3LC, G3LCS	1 0 9*
017298 ...	Chain, front, 66 links, $\frac{1}{2}$ in. by 305 in. (13).....	1	G3L, G3LS, G80C, G80CS	1 1 1*
017299 ...	Chain, front, 67 links, $\frac{1}{2}$ in. by 305 in. (13).....	1	G80, G80S	1 1 5*
017380 ...	Chain, rear, 90 links, $\frac{3}{8}$ in. by 380 in. (13).....	1	G3LC, G80C	2 2 2*
017301 ...	Chain, rear, 94 links, $\frac{3}{8}$ in. by 380 in. (13).....	1	G3L, G80	2 4 1*
017376 ...	Chain, rear, 98 links, $\frac{3}{8}$ in. by 380 in. (13).....	1	G3LS, G3LCS, G80S, G80CS...	2 5 11*
017296 ...	Chain, dynamo, 49 links, $\frac{3}{8}$ in. by 225 in. (14).....	1	All	8 0*
017294 ...	Chain, magneto, 46 links, $\frac{3}{8}$ in. by 225 in. (14).....	1	All	7 7*
110046-26	Link, connecting, for $\frac{1}{2}$ in. chains.....	R	All	8*
110056-26	Link, connecting, for $\frac{3}{8}$ in. chains.....	R	All	11*
110046-30	Link, cranked, for $\frac{1}{2}$ in. chains.....	R	All	1 2*
110056-30	Link, cranked, for $\frac{3}{8}$ in. chains.....	R	All	1 7*
110046-27	Clip, spring, for $\frac{1}{2}$ in. connecting links.....	R	All	1 1/2*
110056-27	Clip, spring, for $\frac{3}{8}$ in. connecting links.....	R	All	2*

Note 13 ... The prices of front and rear chains include spring connecting links, and these are also included in the number of links per chain. We do not sell odd lengths of chain.

Note 14 ... Magneto and Dynamo chains are endless. We do not sell connecting and cranked links for same.

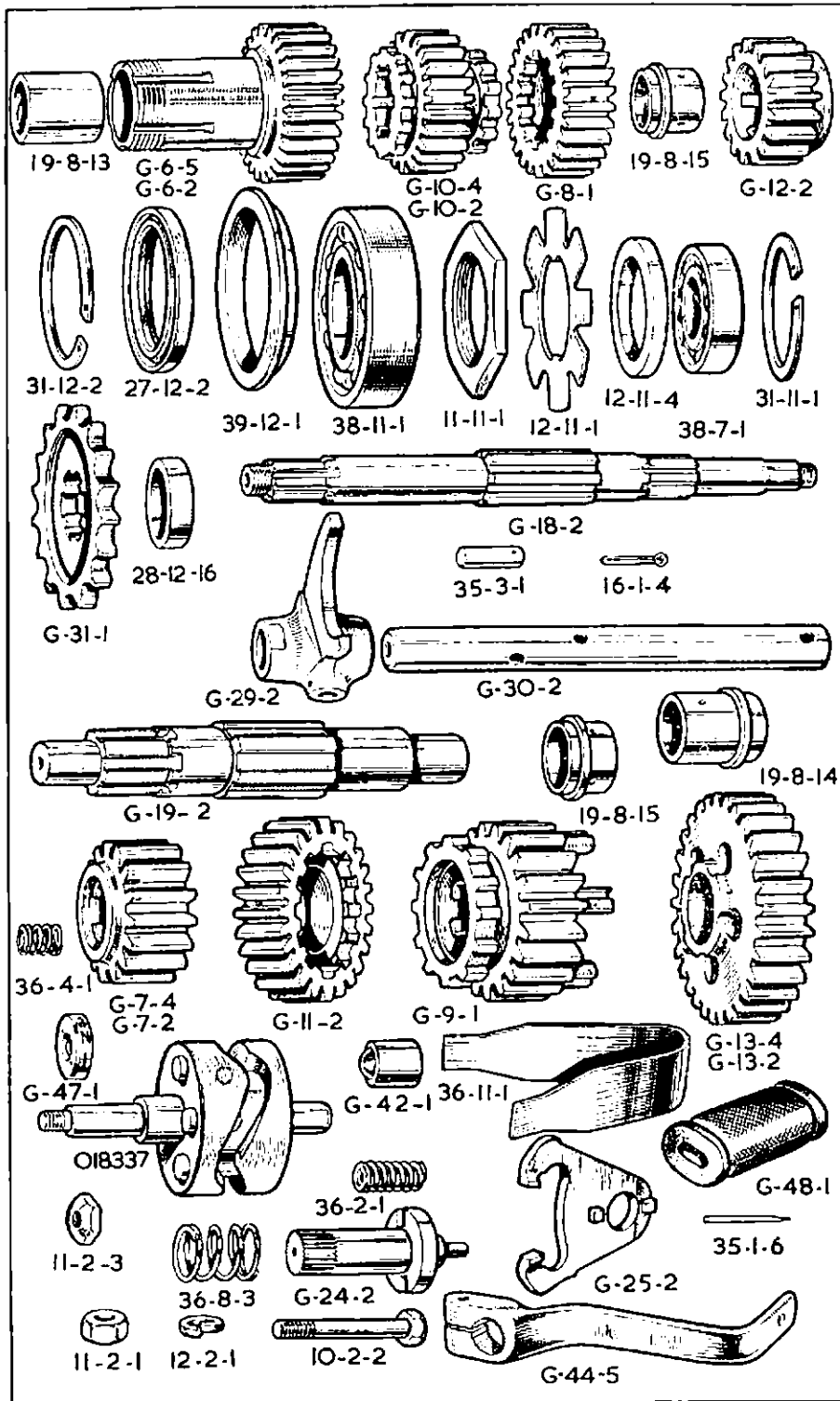
### GEAR BOX FIXING PARTS.

010957 ...	Bolt, gearbox top fixing, $5\frac{1}{16}$ ins. by $\frac{7}{16}$ in. by 26.....	1	All	2 0
000318 ...	Stud, gearbox bottom fixing, $4\frac{3}{8}$ ins. by $\frac{7}{16}$ in. by 26.....	1	All	10
012999 ...	Spacer, $\frac{1}{16}$ in. wide, on top bolt, outside right.....	1	All	4
000002 ...	Nut, for gearbox top fixing bolt.....	1	All	4
000002 ...	Nut, for gearbox bottom fixing stud.....	2	All	4
000009 ...	Washer, plain, for top fixing bolt, left side.....	1	All	1
013987 ...	Eye-bolt, for front chain adjustment.....	1	All	1 9
000215 ...	Nut, for front chain adjustment eye-bolt.....	2	All	4
000785 ...	Crosshead, for front chain adjustment eye-bolt.....	1	All	1 0
000361 ...	Bolt, fixing crosshead to engine plate, $\frac{3}{8}$ in. by $\frac{7}{16}$ in. by 26.....	1	G3L, G3LC, G80, G80C	3
000011 ...	Washer, plain, for crosshead fixing bolt.....	1	G3L, G3LC, G80, G80C	1

### GEAR BOX SHELL.

G-1-2 ...	Shell, gearbox, bare.....	1	All	2 5 0*
21-7-5 ...	Plug, drain, for gearbox shell.....	1	All	9*
12-7-6 ...	Washer, fibre, for gearbox shell drain plug.....	1	All	1*
12-7-4 ...	Cap, in shell, covering bore for selector spindles.....	2	All	3*
35-3-2 ...	Pin, dowel, locating, kick-starter case on gearbox shell	1	All	4*
G-2-2 ...	Case, kick-starter.....	1	All	1 5 0*
G-5-3 ...	Washer, paper, between shell and kick-starter case.....	1	All	1*
G-3-2 ...	Cover, for kick-starter case.....	1	All	1 5 0*
G-5-4 ...	Washer, paper, between kick-starter case and cover...	1	All	1*
28-12-19 ...	Piece, locating, between kick-starter case and cover...	1	All	1 6*
35-1-1 ...	Pin, dowel, locating fixed cam-plate in kick-starter case	2	All	3*
21-10-1 ...	Cap, filler, for kick-starter case cover.....	1	All	3 0*
21-5-1 ...	Plug, oil level, in kick-starter case cover.....	1	All	9*
12-5-4 ...	Washer, fibre, for oil level plug.....	1	All	1*
35-2-1 ...	Pin, anchor, in cover, for kick-starter spring.....	1	All	6*
14-2-3 ...	Screw, $\frac{3}{8}$ in. under head.....	1	All	6*
14-2-4 ...	Screw, $\frac{1}{2}$ in. under head.....	3	All	9*
14-2-5 ...	Screw, $\frac{1}{2}$ in. under head.....	2	All	9*
14-2-6 ...	Screw, $2\frac{1}{2}$ ins. under head.....	1	All	1 0*
14-2-7 ...	Screw, $3\frac{1}{2}$ ins. under head.....	1	All	1 0*

Above screws have cheese heads and are threaded  $\frac{1}{4}$  in. whlt.



This scan is explicit for non-commercial use and is not intended for financial or material gain by anyone

PART NUMBER.	DESCRIPTION	QTY.	USED ON.	PRICE EACH £ s. d.
--------------	-------------	------	----------	-----------------------

### SHAFTS AND GEARS.

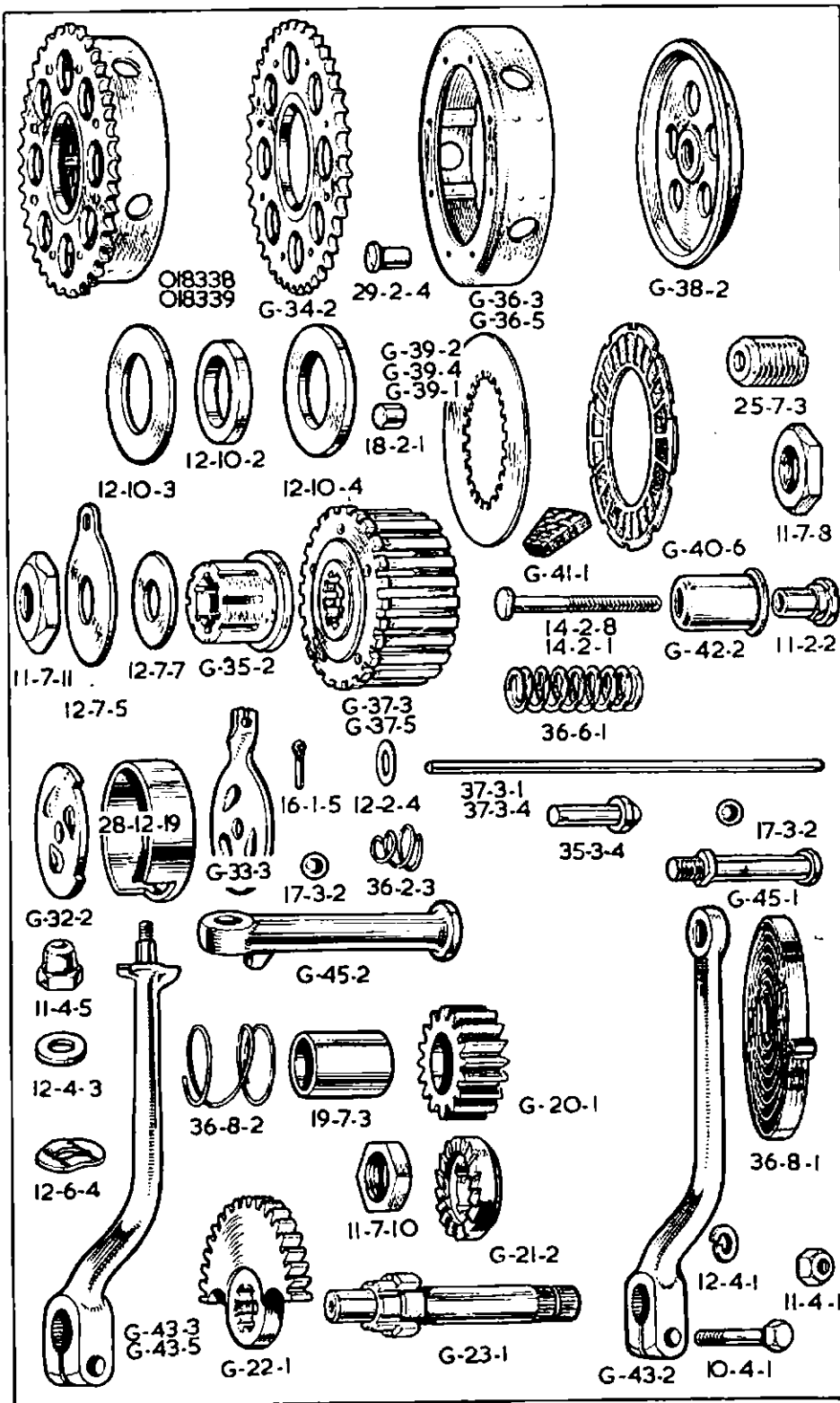
G-18-2	Mainshaft, for gearbox.....	1	All	7 6*
G-19-2	Layshaft, for gearbox.....	1	All	10 0*
G-6-2	Gear, driving, mainshaft, with bushes, 28 teeth.....	1	G3L, G3LS, G3LCS, G80, G80S, G80CS	2 8 0*
G-6-5	Gear, driving, mainshaft with bushes, 30 teeth.....	1	G3LC, G80C	2 8 0*
G-12-2	Gear, first, mainshaft, 17 teeth.....	1	All	15 0*
G-10-2	Gear, second, mainshaft, 22 teeth.....	1	G3L, G3LS, G3LCS, G80, G80S, G80CS	1 18 6*
G-10-4	Gear, second, mainshaft, 21 teeth.....	1	G3LC, G80C	1 18 6*
G-8-1	Gear, third, mainshaft, 25 teeth.....	1	All	1 1 0*
G-7-2	Pinion, on layshaft, 18 teeth.....	1	G3L, G3LS, G3LCS, G80, G80S, G80CS	15 0*
G-7-4	Pinion, on layshaft, 17 teeth.....	1	G3LC, G80C	15 0*
G-13-2	Gear, first, layshaft, with bush, 29 teeth.....	1	G3L, G3LS, G3LCS, G80, G80S, G80CS	1 1 0*
G-13-4	Gear, first, layshaft, with bush, 30 teeth.....	1	G3LC, G80C	1 1 0*
G-11-2	Gear, second, layshaft, with bush, 24 teeth.....	1	All	1 1 0*
G-9-1	Gear, third, layshaft, 21 teeth.....	1	All	1 18 6*
19-8-13	Bush, for mainshaft driving gear.....	2	All	3 0*
19-8-15	Bush, for mainshaft third gear.....	1	All	5 0*
19-8-15	Bush, for layshaft second gear.....	1	All	5 0*
19-8-14	Bush, for layshaft first gear.....	1	All	5 0*

### GEARBOX BEARINGS, CAPS AND OIL-SEALS

38-11-1	Bearing, ball, 1 $\frac{1}{2}$ in. by 62 mm. by 16 mm. for driving gear on mainshaft.....	1	All	2 6*
27-12-2	Oil-seal, for driving gear bearing.....	1	All	4 6*
39-12-1	Housing, for driving gear bearing oil-seal.....	1	All	2 6*
31-12-2	Ring, split, retaining driving gear bearing.....	1	All	6*
38-7-1	Bearing, ball, 17 mm. by 40 mm. by 12 mm. for mainshaft (kick-starter end).....	1	All	18 9*
12-11-3	Spacer, $\frac{1}{2}$ in. thick, for mainshaft ball bearing.....	2	All	3*
31-11-1	Ring, split, retaining mainshaft ball bearing.....	1	All	6*
20-7-1	Bush, for layshaft (clutch end) (-843 in. long).....	1	All	6 0*
35-1-2	Pin, dowel, locating layshaft bush.....	1	All	2*
12-8-8	Cap, in shell, covering bore, for layshaft.....	1	All	4*
20-7-3	Bush, for layshaft (kick-starter end) (-779 in. long).....	1	All	6 0*
35-1-2	Pin, dowel, locating layshaft bush.....	1	All	2*
20-7-2	Bush, in kick-starter case, for kick-starter spindle.....	1	All	3 0*
20-8-14	Bush, in cover, for kick-starter spindle.....	1	All	3 0*
27-7-5	Oil-seal, in cover bush, for kick-starter spindle.....	1	All	3 6*
20-4-1	Bush, in kick-starter case, for cam spindle.....	1	All	2 6*
20-4-2	Bush, kick-starter case cover.....	1	All	2 0*
27-4-2	Oil-seal, in cover bush, for cam spindle.....	1	All	3*
20-3-1	Bush, in kick-starter case, for control quadrant spindle.....	1	All	1 6*
12-5-2	Cap, in kick-starter case, covering bore for control quadrant spindle.....	1	All	1*
20-8-9	Bush, in cover, for control quadrant spindle.....	1	All	2 6*
27-7-4	Oil-seal, in cover bush, for control quadrant spindle.....	1	All	4*

### GEARBOX SMALL SPROCKET

G-31-1	Sprocket, gearbox, 16 teeth by $\frac{5}{8}$ in. by .380 in.....	1	All	2 6*
28-12-16	Collar, spacing, gearbox sprocket, .435 in. wide.....	1	All	1 6*
12-11-1	Washer, lock, for gearbox sprocket nut.....	1	All	9*
11-11-1	Nut, fixing gearbox sprocket to driving gear.....	1	All	2 7* ✓
018494	Deflector, water, fits under nut 11-11-1.....	1	G3LC, G80C, G3LCS, G80CS	1 3



PART NUMBER.	DESCRIPTION.	QTY.	USED ON.	PRICE EACH £ s. d
--------------	--------------	------	----------	----------------------

### GEAR OPERATING PARTS

G-30-2	... Spindle, for selector forks.....	2	All	7 6*
G-29-2	... Fork, for gear selection.....	2	All	10 0*
35-3-1	... Peg, for selector spindles.....	4	All	6*
16-1-4	... Pin, cotter, for selector spindle pegs.....	4	All	1*
018337	... Cam, assembly .....	1	All	10 0*
	The cam assembly comprises:			
	1—G-27-2 Spindle.			
	1—G-28-1 Cam.			
	3—35-2-4 Pegs.			
	1—35-2-2 Locating pegs.			
	2—35-1-4 Cam stop pegs.			
	(Above parts not sold as separate spares)			
G-42-1	... Plunger, locating cam assembly.....	1	All	2 0*
36-2-1	... Spring, for cam assembly locating plunger.....	1	All	6*
G-25-2	... Quadrant, for control spindle.....	1	All	7 6*
35-2-6	... Peg, quadrant drive.....	1	All	3*
G-24-2	... Spindle, for gear control quadrant.....	1	All	12 6*
36-11-1	... Spring, primary, for control quadrant.....	1	All	2 0*
36-8-3	... Spring, secondary, for control quadrant.....	1	All	6*
G-47-1	... Indicator .....	1	All	9*
36-4-1	... Spring under indicator.....	1	All	3*
11-2-3	... Nut, retaining indicator .....	1	All	3*
G-44-5	... Lever, foot, for gear control.....	1	All	11 3*
G-48-1	... Pad, rubber, for gear foot lever.....	1	All	1 1*
35-1-6	... Pin, fixing gear foot lever rubber pad.....	1	All	1*
10-2-2	... Bolt, clamping gear foot lever.....	1	All	10*
12-2-1	... Washer, spring, for gear foot lever bolt.....	1	All	1*
11-2-1	... Nut, for gear foot lever bolt.....	1	All	3*

### CLUTCH

G-36-5	... Case, for four plate clutch.....	1	G3L, G3LS	18 0*
G-36-3	... Case, for five plate clutch.....	1	G3LC, G80, G80S, G80C, G80CS, G3LCS	18 0*
29-2-4	... Rivet, for clutch case and chainwheel.....	8	All	2*
G-34-2	... Chainwheel, 40 teeth by $\frac{1}{2}$ in. by .305 in.....	1	All	1 10 0*
018338	... Case and chainwheel, assembled (four plate).....	1	G3L, G3LS	2 11 0*
018339	... Case and chainwheel, assembled (five plate).....	1	G3LC, G80, G80C, G80S, G80CS, G3LCS	2 11 0*
G-35-2	... Sleeve, for mainshaft.....	1	All	17 0*
12-10-2	... Race, roller, for clutch bearing chainwheel.....	1	All	3 0*
18-2-1	... Rollers, for chainwheel bearing..... price per set of	24	All	5 3*
12-10-3	... Washer, thin, chainwheel bearing.....	1	All	1 1*
12-10-4	... Washer, thick, chainwheel bearing.....	1	All	1 1*
G-37-5	... Centre, for four plate clutch.....	1	G3L, G3LS	1 10 0*
G-37-3	... Centre, for five plate clutch.....	1	G3LC, G80, G80C, G80S, G80CS, G3LCS	1 10 0*
12-7-7	... Washer, plain, for centre retaining nut.....	1	All	4*
12-7-5	... Washer, lock, for centre retaining nut.....	1	All	9*
11-7-11	... Nut, retaining clutch centre.....	1	All	9*
G-39-2	... Plate, clutch, plain, steel, thick.....	1	G3L, G3LS	4 6*
G-39-1	... Plate, clutch, plain, steel, thin.....	4	G3L, G3LS	3 0*
G-39-4	... Plate, clutch, plain, steel.....	6	G3LC, G80, G80C, G80S, G80CS, G3LCS	3 0*
G-40-6	... Plate, clutch, friction, with inserts.....	4	G3L, G3LS	12 6*
G-40-6	... Plate, clutch, friction, with inserts.....	5	G3LC, G80, G80S, G80C, G80CS, G3LCS	12 6*

PART NUMBER.	DESCRIPTION.	QTY.	USED ON.	PRICE EACH £ s. d.
--------------	--------------	------	----------	-----------------------

### CLUTCH—continued.

G-41-1	Inserts, fabric, for friction plate.....price per dozen	96	G3L, G3LS	2 6*
G-41-1	Inserts, fabric, for friction plate.....price per dozen	120	G3LC, G80, G80S, G80C, G80CS, G3LCS	2 6*
G-38-2	Plate, clutch, spring pressure.....	1	All	13 6*
25-7-3	Cup thrust, for spring pressure plate.....	1	All	1 0*
11-7-8	Nut, lock, for pressure plate thrust cup.....	1	All	6*
14-2-1	Stud, for clutch spring, 1½ in. long (four plate clutch)...	5	G3L, G3LS	6*
14-2-8	Stud, for clutch spring, 2 ins. long (five plate clutch)....	5	G3LC, G80, G80S, G80C, G80CS, G3LCS	6*
36-6-1	Spring, for clutch .....	5	All	9*
G-42-2	Cup, for clutch spring.....	5	All	9*
11-2-2	Nut, adjusting, for clutch spring.....	5	All	6*

### CLUTCH OPERATING PARTS

37-3-4	Rod, thrust, 9½ ins. long (four plate clutch).....	1	G3L, G3LS	1 6*
37-3-1	Rod, thrust, 10½ ins. long (five plate clutch).....	1	G3LC, G80, G80S, G80C, G80CS, G3LCS	1 6*
17-3-2	Ball, ⅝ in., steel, for clutch thrust rod.....	1	All	1*
G-32-2	Cam-plate, fixed, actuating clutch.....	1	All	2 0*
G-33-3	Cam-plate, moving, actuating clutch.....	1	All	2 6*
35-3-4	Dowel, thrust (passes through both cam-plates).....	1	All	1 6*
12-2-4	Washer, plain, for cam-plate dowel.....	1	All	1*
36-2-3	Spring, for cam-plate dowel.....	1	All	3*
16-1-5	Pin, split, for cam-plate dowel.....	1	All	1*
17-3-2	Ball, ⅝ in., steel, for cam-plates.....	3	All	1*

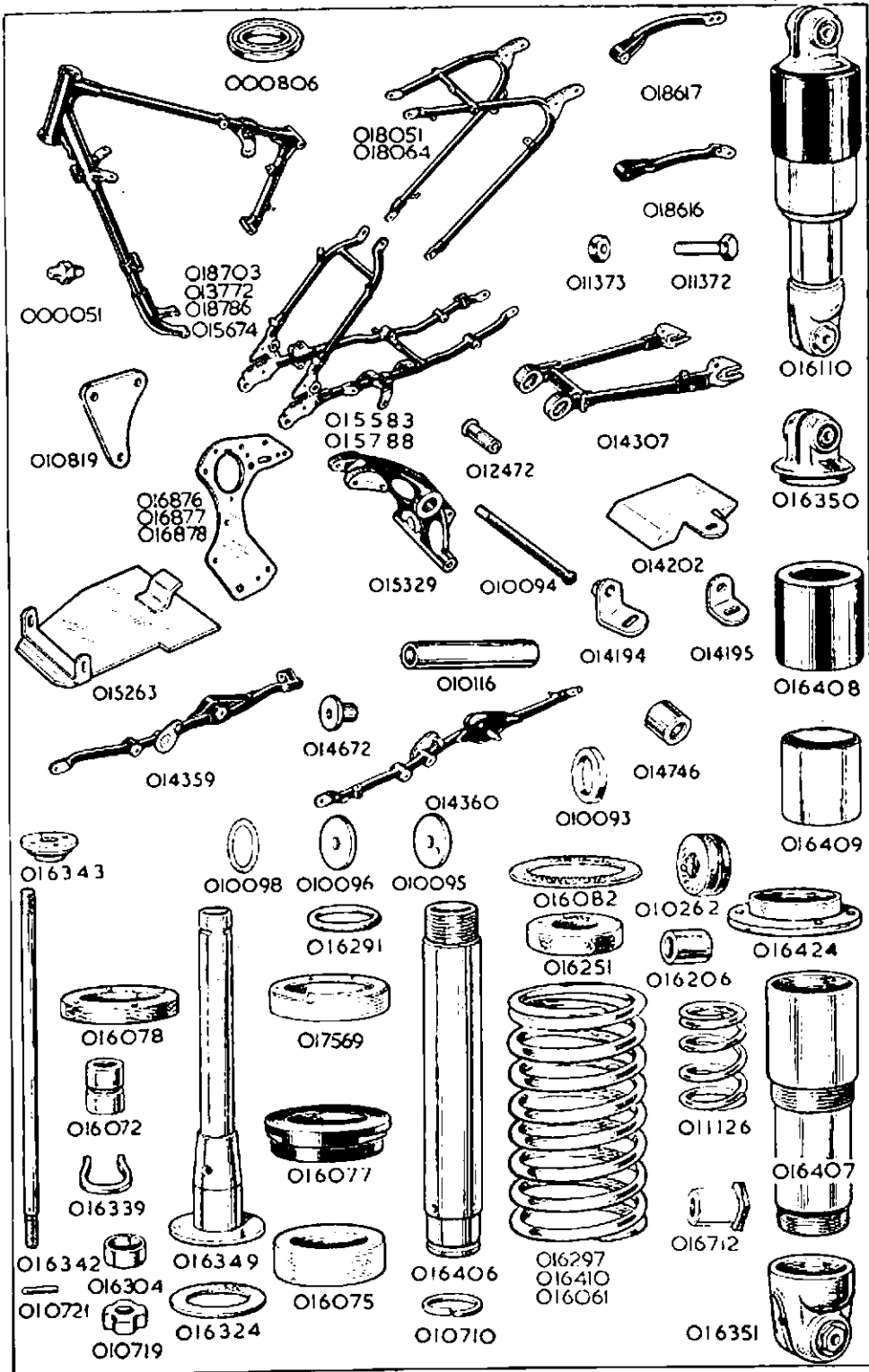
### KICK-STARTER

G-21-2	Ratchet, driving, kick-starter.....	1	All	8 8*
G-20-1	Pinion, ratchet, kick-starter.....	1	All	12 0*
19-7-3	Bush, kick-starter ratchet pinion.....	1	All	3 9*
36-8-2	Spring, kick-starter ratchet pinion.....	1	All	1 1*
11-7-10	Nut, retaining ratchet driver to mainshaft.....	1	All	6*
G-23-1	Spindle, for kick-starter quadrant.....	1	All	11 3*
G-22-1	Quadrant, for kick-starter.....	1	All	15 9*
018340	Kick-starter quadrant and spindle assembled.....	1	All	1 7 0*
36-8-1	Spring, return, for kick-starter foot lever.....	1	All	4 0*
G-43-2	Lever, foot, kick-starter, bare.....	1	G3L, G3LS, G80, G80S	15 9*
G-43-3	Lever, foot, kick-starter, bare.....	1	G3LC, G80C	15 9*
G-43-5	Lever, foot, kick-starter, bare.....	1	G3LCS, G80CS	15 9*
G-45-1	Pin, pedal, rigid, for kick-starter lever.....	1	G3L, G3LS, G80, G80S	4 6*
G-45-2	Pin, pedal, folding, for kick-starter lever.....	1	G3LC, G80C, G3LCS, G80CS	6 9*
11-4-5	Nut, retaining folding pedal pin.....	1	G3LC, G80C, G3LCS, G80CS	9*
12-4-3	Washer, plain, for pin retaining nut.....	1	G3LC, G80C, G3LCS, G80CS	4*
12-6-4	Washer, spring, for pin retaining nut.....	1	G3LC, G80C, G3LCS, G80CS	3*
10-4-1	Bolt, clamping, kick-starter foot lever to spindle.....	1	All	1 1*
12-4-1	Washer, spring, for foot lever clamping bolt.....	1	All	9*
11-4-1	Nut, for foot lever clamping bolt.....	1	All	2*



## FRAME SECTION.

PART NUMBER.	DESCRIPTION.	QTY.	USED ON.	PRICE EACH £ s. d.
<b>FRONT FRAME.</b>				
018786 ...	Frame, front portion only, bare .....	1	G3LS, G80S	
013772 ...	Frame, front portion only, bare.....	1	G3L, G3LCS, G80, G80CS ...	5 7 3
015674 ...	Frame, front portion only, bare.....	1	G3LC, G80C ...	6 4 2
000806 ...	Race, ball, for frame head lug .....	2	All ...	3 10
000072 ...	Balls, 1 $\frac{1}{2}$ in. diameter, for steering head, per set of 56	56	All ...	1 7
000051 ...	Nipple, grease, for frame head lug .....	1	All ...	5
000597 ...	Stud, for seat lug (below saddle), 4 $\frac{3}{8}$ ins. by $\frac{1}{2}$ in. by 26	1	G3L, G3LC, G80, G80C ...	10
014478 ...	Stud, for seat lug (below saddle), 4 $\frac{7}{8}$ ins. by $\frac{1}{2}$ in. by 26	1	G3LS, G3LCS, G80S, G80CS...	11
000008 ...	Washer, plain, for seat lug stud.....	2	All Touring and Scrambles ...	1
000001 ...	Nut, for seat lug stud .....	2	All ...	4
000015 ...	Screw, securing earth wires. (Screws into end of seat lug stud.) $\frac{3}{8}$ in. by 3.BA. ....	1	All ...	1
000185 ...	Washer, plain, for 000015 earth wire screw .....	1	All ...	1
011238 ...	Stud, uniting front and rear frame, 6 ins. by $\frac{1}{2}$ in. by 26	1	G3L, G3LS, G80, G80S ...	6
010824 ...	Stud, uniting front and rear frame, 6 $\frac{3}{32}$ ins. by $\frac{1}{8}$ in. by 26	1	G3LC, G3LCS G80C, G80CS	6
000011 ...	Washer, plain, for frame uniting stud.....	2	All ...	1
000004 ...	Nut, for frame uniting stud .....	2	All ...	3
<b>REAR FRAME.</b>				
015583 ...	Frame, rear portion only.....	1	G3L, G80 ...	6 13 4
015788 ...	Frame, rear portion only .....	1	G3LC, G80C ...	6 10 2
017031 ...	Bolt, adjusting rear chain, 2 $\frac{1}{4}$ ins. by $\frac{1}{2}$ in. by 26 .....	2	G3L, G3LC G80, G80C ...	1 2
000005 ...	Nut, lock, for rear chain adjusting bolt .....	2	ditto	3
014359 ...	Rail, frame, right side.....	1	G3LS, G3LCS, G80S, G80CS...	2 0 0
014360 ...	Rail, frame, left side.....	1	ditto	2 3 4
018051 ...	Loop, rear frame.....	1	G3LS, G80S ...	3 18 11
018064 ...	Loop, rear frame.....	1	G3LCS, G80CS	5 10 0
014512 ...	Stud, for rear loop at bottom, 12 ins. by $\frac{7}{16}$ in. by 26. (Also passes through rear fork bridge and both frame rails) .....	1	G3LS, G3LCS G80S, G80CS...	4 4
000002 ...	Nut, for rear loop bottom stud.....	2	ditto	4
000009 ...	Washer, plain, for rear loop bottom stud.....	2	ditto	1
018617 ...	Tube, supporting rear of rear mudguard, right side.....	1	G3LS, G80S ...	6 3
018616 ...	Tube, supporting rear of rear mudguard, left side.....	1	ditto	6 3
000343 ...	Bolt, fixing mudguard to support tube $\frac{1}{2}$ in. by $\frac{1}{4}$ in. by 26.....	2	ditto	3
000012 ...	Washer, plain, for mudguard support tube bolt.....	2	ditto	1
000191 ...	Washer, spring, for mudguard support tube bolt.....	2	ditto	1
000005 ...	Nut, for mudguard support tube bolt.....	2	ditto	3
015329 ...	Bridge, for rear fork (includes bushes and studs for centre stand spring clip).....	1	G3LS, G3LCS G80S, G80CS ...	2 3 8
014672 ...	Bush, for rear fork bridge.....	2	ditto	7
000250 ...	Stud, for rear fork bridge, $\frac{3}{4}$ in. by 2.BA.....	2	ditto	3



This scan is explicit for non-commercial use and is not intended for financial or material gain by anyone

PART NUMBER.	DESCRIPTION.	QTY.	USED ON.	PRICE EACH £ s. d.
--------------	--------------	------	----------	-----------------------

### ENGINE PLATES AND BOLTS.

010819 ...	Plate, engine, front .....	2	All ... ..	3 3
010823 ...	Stud, fixing front plate to frame tube, $6\frac{3}{8}$ ins. by $\frac{3}{8}$ in. by 26 .....	1	All ... ..	6
000010 ...	Washer, plain, for engine front plate stud .....	2	All ... ..	1
000003 ...	Nut, for stud fixing engine front plate .....	2	All ... ..	3
016876 ...	Plate, engine, rear .....	2	G3L, G3LS, G80, G80S ...	7 0
016877 ...	Plate, engine, rear .....	2	G3LC, G80C ...	13 9
016878 ...	Plate, engine, rear .....	2	G3LCS, G80CS ...	11 5
000303 ...	Stud, for seat tube bottom lug, $4\frac{1}{2}$ ins. by $\frac{3}{8}$ in. by 26 .....	1	G3L, G3LC, G80, G80C ...	6
013826 ...	Spacer, $\frac{1}{2}$ in. long, for seat tube bottom stud, left .....	1	ditto	6
013827 ...	Spacer, $\frac{1}{2}$ in. thick, for seat tube bottom stud, right ...	1	ditto	6
000003 ...	Nut, for seat tube bottom lug stud .....	2	ditto	3
000303 ...	Stud, passing through top of engine rear plates, lower end of front frame seat tube and rear fork bridge, $4\frac{1}{2}$ ins. by $\frac{3}{8}$ in. by 26 .....	1	G3LS, G3LCS, G80S, G80CS ...	6
000003 ...	Nut, for 000303 stud .....	2	ditto	3
000278 ...	Stud, passing through rear fork bridge, and back ends of engine rear plates, $4\frac{3}{4}$ ins. by $\frac{1}{2}$ in. by 26. (The front chain adjusting eye-bolt block screws on the right-hand end of this stud.) .....	1	ditto	6
000011 ...	Washer, plain, for 000278 stud .....	1	ditto	1
000004 ...	Nut, for 000278 stud .....	1	ditto	3
015263 ...	Shield, for crankcase .....	1	G3LC, G3LCS, G80S, G80CS ...	6 3
000277 ...	Stud, for engine plate extension, $4\frac{3}{8}$ ins. by $\frac{1}{4}$ in. by 26 .....	1	ditto	6
017198 ...	Spacer, $3\frac{7}{8}$ ins. long, for engine plate extension .....	2	ditto	3
000004 ...	Nut, for 000277 studs .....	3	ditto	3
000277 ...	Stud, engine rear plate crosshead, $4\frac{3}{8}$ ins. by $\frac{1}{4}$ in. by 26 (only used if no dynamo fitted) .....	1	ditto	6
014202 ...	Cover, rear engine plate .....	1	All ... ..	1 9
014194 ...	Bracket, long, for horn .....	1	All ... ..	1 3
014195 ...	Bracket, short, for horn .....	1	All ... ..	5
000413 ...	Bolt, fixing cover plate and brackets, $\frac{7}{8}$ in. by $\frac{3}{8}$ in. by 26 .....	1	All ... ..	6
000010 ...	Washer, plain, for cover plate bolt .....	1	All ... ..	1

### REAR FORK.

014307 ...	Fork, rear .....	1	G3LS, G3LCS, G80S, G80CS ...	4 1 7
011372 ...	Pin, chain adjusting, for right fork end .....	1	ditto	7
011373 ...	Nut, lock, for chain adjusting pin .....	1	ditto	2
014746 ...	Sleeve, assembly (bushed) .....	2	ditto	5 6
010116 ...	Tube .....	1	ditto	5 0
010095 ...	Cap, for rear fork bearing, right side .....	1	ditto	1 0
010096 ...	Cap, for rear fork bearing, left side .....	1	ditto	6
010093 ...	Washer, felt, for rear fork bearing .....	2	ditto	10
010098 ...	Gasket, for rear fork bearing caps .....	2	ditto	1
010094 ...	Spoke, for rear fork bearing (central tie bolt) .....	1	ditto	4
012472 ...	Nipple, for rear fork bearing spoke .....	1	ditto	4
000485 ...	Screw, plug, for oil, in end cap, $\frac{1}{2}$ in. by $\frac{1}{2}$ in. by 26 .....	1	ditto	1
000203 ...	Washer, fibre, for oil plug screw .....	1	ditto	1

PART NUMBER.	DESCRIPTION.	QTY.	USED ON.	PRICE EACH £ s. d.
<b>TELEDRAULIC REAR LEG.</b>				
016110	... Leg, TELEDRAULIC, rear complete assembly (no fixing bolts, washers and nuts).....	2	G3LS, G80S ...	5 7 8
016390	... Leg, TELEDRAULIC, rear, complete assembly (no fixing bolts, washers and nuts).....	2	G3LCS, G80CS	5 12 4
016350	... Pivot, top, assembled (this assembly includes the next three items).....	2	G3LS, G3LCS, G80S, G80CS	15 9
016059	... Pivot, top, bare .....	2	ditto	14 9
010262	... Bush, rubber, for top pivot.....	4	ditto	3
016206	... Spacer, for top pivot rubber bush.....	4	ditto	3
016351	... Pivot, bottom, assembled, (this assembly includes the next five items).....	2	ditto	11 10
016060	... Pivot, bottom bare.....	2	ditto	10 6
010262	... Bush, rubber, for bottom pivot.....	4	ditto	3
016206	... Spacer, for bottom pivot rubber bush.....	2	ditto	3
016712	... Sleeve nut, for bottom pivot bolt.....	2	ditto	6
016873	... Washer, plain, for 016712 sleeve nut.....	2	ditto	1
016406	... Tube, inner (fits in top pivot recess).....	2	ditto	10 2
016291	... Ring, sealing inner tube at top.....	2	ditto	1 0
016075	... Bush, lower end of inner tube.....	2	ditto	2 9
010710	... Circlip, retaining inner tube bush.....	2	ditto	1
016407	... Tube, outer (screws into bottom pivot).....	2	ditto	19 4
016324	... Washer, sealing lower end of outer tube.....	4	ditto	1
016077	... Bush, for outer tube.....	2	ditto	1 8
017569	... Oil-seal, between inner and outer tubes.....	2	ditto	5 3
016078	... Collar, retaining oil-seal.....	2	ditto	1 9
016349	... Tube, for damper.....	2	ditto	6 6
016072	... Sleeve, plunger, for damper rod.....	2	ditto	6
016339	... Clip, locating plunger sleeve.....	2	ditto	1
016342	... Rod, for damper.....	2	ditto	1 0
016343	... Collar, for top end of damper rod.....	2	ditto	1 0
000074	... Nut, locking collar top-end of damper rod.....	2	ditto	3
016304	... Valve, for damper.....	2	ditto	1 0
010721	... Pin, stop, for damper valve.....	2	ditto	1
010719	... Seat, for damper valve.....	2	ditto	6
000005	... Nut, retaining damper seat to damper rod.....	2	ditto	3
011126	... Spring, buffer.....	2	ditto	10
016297	... Spring, main (solo).....	2	G3LS, G80S ...	5 0
016061	... Spring, main (sidecar).....	2	G3LS, G80S ...	9 8
016410	... Spring, main.....	2	G3LCS, G80CS	9 8
016082	... Washer, leather, at both ends of main spring.....	4	G3LS, G80S, G3LCS, G80CS	3
016408	... Tube, outer, covering top end of main spring.....	2	ditto	7 3
016409	... Tube, outer, covering bottom end of main spring.....	2	ditto	5 10
016424	... Nut, retaining bottom outer cover tube.....	2	ditto	6 3
016251	... Buffer, for TELEDRAULIC leg.....	2	ditto	11
018648	... Bolt, fixing top pivot, 3 $\frac{1}{8}$ ins. by $\frac{3}{8}$ in. by 26.....	2	G3LS, G80S ...	1 4
014521	... Bolt, fixing top pivot (replaces 018648 when carrier is fitted).....	2	ditto	1 4
011273	... Bolt, fixing top pivot, 2 $\frac{1}{2}$ ins. by $\frac{3}{8}$ in. by 26.....	2	G3LCS, G80CS	8
000010	... Washer, plain, for top pivot bolt.....	4	G3LS, G80S, G3LCS, G80CS	1
016712	... Sleeve nut, for top pivot bolt.....	2	G3LS, G80S ...	6
000003	... Nut, for top pivot bolt.....	2	G3LCS, G80CS	3
016359	... Bolt, fixing bottom pivot, 2 $\frac{1}{2}$ ins. by $\frac{3}{8}$ in. by 26.....	2	ditto	7
000010	... Washer, plain, for bottom pivot bolt.....	2	ditto	1

BEFORE ORDERING SPARES  
PLEASE NOTE THE INFORMATION GIVEN ON PAGES  
TWO AND THREE

PART NUMBER.	DESCRIPTION.	QTY.	USED ON.	PRICE EACH		
				£	s.	d.

### FORK ASSEMBLIES.

The following fork assemblies are complete and include ball races for the fork crown and top head lug (but not the two frame ball races)

018766	... Fork, assembly (TELEDRAULIC Front Fork, Solo).....	1	G3L, G3LS G80, G80S	15	17	6
018769	... Fork, assembly (TELEDRAULIC Front Fork, Sidecar)...	1	ditto	16	3	9
018767	... Fork assembly (TELEDRAULIC Front Fork, Solo).....	1	G3LC, G80C	15	16	10
018768	... Fork assembly (TELEDRAULIC Front Fork, Solo).....	1	G3LCS, G80CS	17	7	11

For ease of servicing, the inner tube unit and damper unit are listed and supplied as separate assemblies. This enables a complete assembly to be exchanged in minimum time. The Units are listed below.

018582	... Front Fork inner tube assembly, Solo .....	2	G3L, G3LS, G3LC, G80, G80S, G80C	2	12	6
018770	... Front Fork inner tube assembly, Sidecar .....	2	G80, G80S	2	13	9
018583	... Front Fork inner tube assembly, Solo .....	2	G3LCS, G80CS	3	3	9

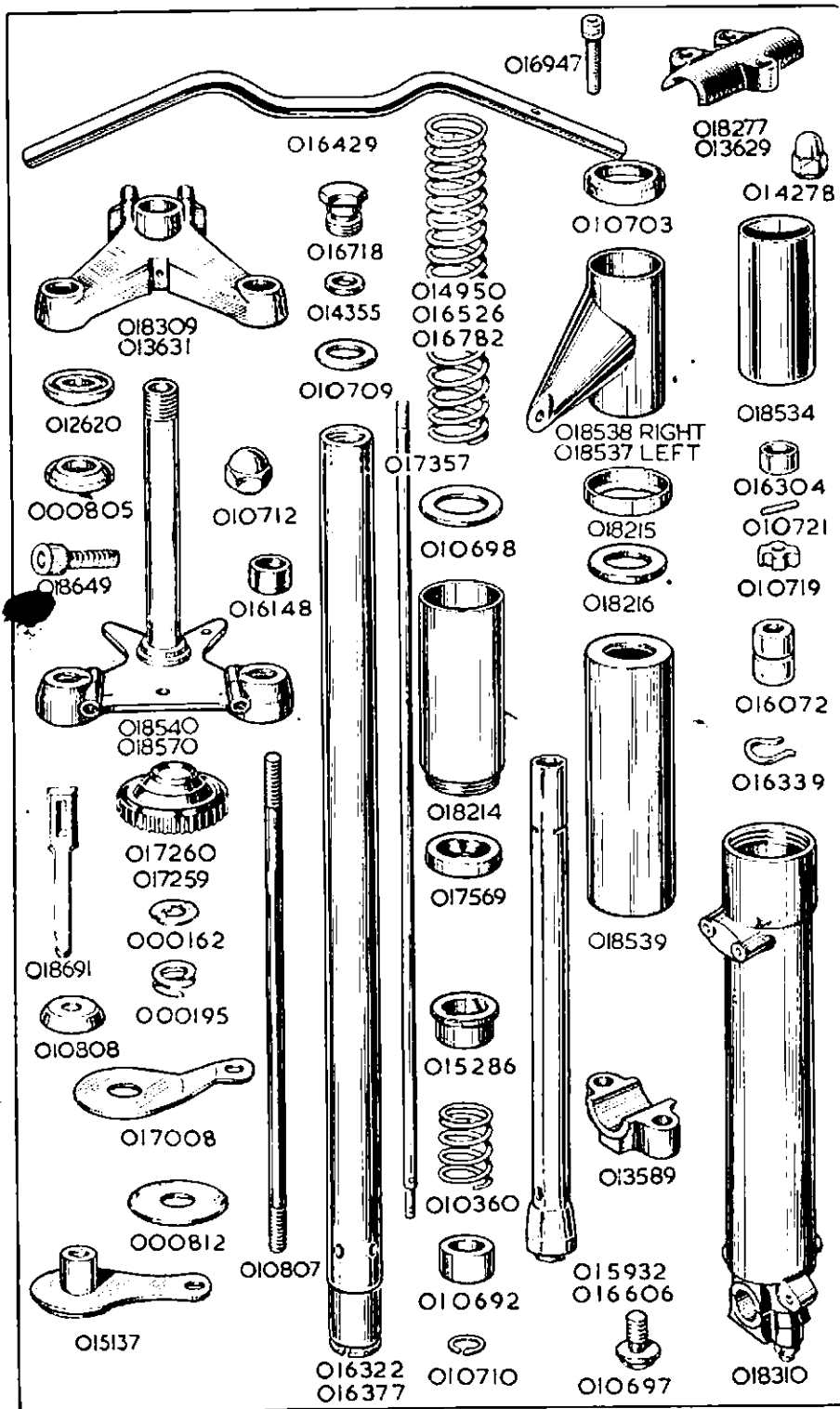
The above assemblies comprise :- Inner tubes with rubber buffers, bushes and circlips, top bolts with washers and sealing rings, slider extensions with oil seals, fork springs and washers.

018328	... Front fork damper assembly.....	2	G3L, G3LS, G3LC, G80, G80S, G80C	10		1
018329	... Front fork damper assembly.....	2	G3LCS, G80CS	10		1

The above assemblies comprise:- Rod and two nuts, damper tube with valve, seat and pin, sleeve and clip and bottom fixing bolt with washer.

### FRONT FORK.

018540	... Crown, assembly, comprising crown, stem and circlip (these parts not sold separately).....	1	G3L, G3LS, G80, G80S	1	17	0
018570	... Crown, assembly, comprising crown, stem and circlip (these parts not sold separately).....	1	G3LC, G3LCS G80C, G80CS	1	17	0
000805	... Race, ball, for fork crown.....	1	All	3	9	
018649	... Screw, pinch, for fork crown.....	2	All	1	4	
018309	... Lug, for handlebar and steering head.....	1	Touring	1	16	6
013631	... Lug, for handlebar and steering head.....	1	Competition	1	15	4
012620	... Race, ball, for handlebar lug.....	1	All	3	8	
000051	... Nipple, grease, for handlebar lug.....	1	All	5		
000236	... Nut, adjusting, for fork crown stem.....	1	All	8		
010712	... Nut, lock (domed), for fork crown stem.....	1	All	2	10	
016322	... Tube, fork, inner.....	2	G3L, G3LS, G3LC, G80, G80S, G80C	1	3	8
016377	... Tube, fork, inner.....	2	G3LCS, G80CS	1	13	8
016148	... Buffer, rubber, for fork inner tube.....	6	All	5		
010692	... Bush, bottom, for fork inner tube.....	2	All	4	1	
010710	... Circlip, for fork inner tube bush.....	2	All	1		
016718	... Bolt, top, for fork inner tube.....	2	All	2	0	
014355	... Ring, sealing, for fork inner tube top bolt.....	2	All	3		
010709	... Washer, plain, for fork inner tube top bolt.....	2	All	4		
018310	... Slider, fork, with cap, studs and nuts, left and right.....	2	All	1	17	4
013589	... Cap, for fork slider.....	2	All	4	1	
010713	... Stud, securing fork slider cap, 1 1/4 in. by 7/8 in. by 26 and 22 .....	4	All	4		



This scan is explicit for non-commercial use and is not intended for financial or material gain by anyone

PART NUMBER.	DESCRIPTION.	QTY.	USED ON.	PRICE
				EACH £ s. d.

**FRONT FORK—continued.**

000011	Washer, plain, for fork slider cap stud.....	4	All	1
000004	Nut, for fork slider cap stud.....	4	All	3
018214	Extension, for fork slider.....	2	All	6 9
015286	Bush, plastic, for fork inner tube.....	2	All	2 6
017569	Oil-seal, for fork inner tube (rubber).....	2	All	5 3
010718	Oil-seal, for fork inner tube (alternative to 017569 and made of leather).....	2	All	5 3
014297	Washer, under oil-seal (must only be used under leather oil-seal 010718).....	2	All	2
016526	Spring, main, for front fork. Solo.....	2	G3L, G3LS, G3LC, G80, G80S, G80C	5 0
014950	Spring, main, for front fork. Solo.....	2	G3LCS, G80CS	6 3
016782	Spring, main, for front fork. Sidecar.....	2	G80, G80S	6 3
010360	Spring, buffer, for front fork.....	2	All	1 1
010698	Washer, leather, fork spring seating.....	4	All	3
018538	Tube, fork cover, top, right, with lamp lug.....	1	All	8 6
018537	Tube, fork cover, top, left, with lamp lug.....	1	All	8 6
010703	Cap, for top of fork top cover tubes.....	2	All	1 2
018216	Seat, (rubber), for cover tube.....	2	All	7
018215	Cap, for bottom of fork top cover tube.....	2	All	1 2
018539	Tube, fork cover, bottom.....	2	All	4 10
000485	Screw, plug, oil drain, for fork slider, $\frac{3}{8}$ in. by $\frac{1}{2}$ in. by 26.....	2	All	1
000203	Washer, fibre, for fork slider screw oil plug.....	2	All	1
015932	Tube, fork damper.....	2	G3L, G3LS, G3LC, G80, G80S, G80C	5 2
016606	Tube, fork damper.....	2	G3LCS, G80CS	5 2
010697	Bolt, fixing fork damper tube to slider, $\frac{7}{8}$ in. by $\frac{7}{8}$ in. by 26.....	2	All	10
010706	Washer, fibre, for damper tube bolt.....	2	All	1
017357	Rod, for fork damper.....	2	All	1 7
000004	Nut, lock, top end of damper rod.....	2	All	3
016072	Sleeve, plunger, for fork damper rod.....	2	All	6
016339	Clip, retaining damper rod sleeve.....	2	All	1
016304	Valve, for fork damper.....	2	All	1 0
010721	Pin, stop, for fork damper valve.....	2	All	1
010719	Seat, for fork damper valve.....	2	All	3
000005	Nut, lock, for fork damper valve seat.....	2	All	3
018691	Steering locking bar (own padlock to be used).....	1	All	1 3

**HANDLEBAR.**

016429	Handlebar, bare.....	1	All	6 3
018277	Clip (half only), for handlebar lug.....	1	Touring	2 0
016947	Screw, for handlebar clip, $\frac{3}{8}$ in. by $\frac{1}{2}$ in. by 26 (socket head).....	3	Touring	9
013629	Clip (half only), for handlebar lug.....	1	Competition	6 6
012870	Stud, for handlebar clip, $1\frac{1}{2}$ in. by $\frac{3}{8}$ in. by 26 and 20.....	4	Competition	4
000012	Washer, plain, for handlebar clip stud.....	4	Competition	1
014278	Nut, for handlebar clip stud.....	4	Competition	6

**MAINTENANCE MANUAL** EDITION CM-22 PRICE **2/6**  
IS THE APPROPRIATE MANUAL FOR THIS SPARES LIST

PART NUMBER.	DESCRIPTION.	QTY.	USED ON.	PRICE EACH £ s. d.
--------------	--------------	------	----------	-----------------------

### STEERING DAMPER. (This is an optional extra).

016404	... Damper, steering, complete set of parts.....	1	All	15 0
017259	... Knob, control, for steering damper.....	1	All	3 6
000162	... Washer, ratchet, for steering damper knob.....	1	All	3
000195	... Washer, spring, for steering damper knob.....	1	All	4
010808	... Cap, for top of steering stem.....	1	All	6
010807	... Drawbolt, for steering damper.....	1	All	1 2
015137	... Sleeve, assembly, lower end of drawbolt.....	1	All	5 8
000073	... Nut, locking sleeve to drawbolt.....	1	All	3
000342	... Bolt, fixing sleeve assembly, $\frac{1}{8}$ in. by $\frac{1}{2}$ in. by 26.....	1	All	3
000191	... Washer, spring, for bolt 000342.....	1	All	1
000012	... Washer, plain, for bolt 000342.....	1	All	1
017008	... Plate, anchor, top position.....	1	All	9
000070	... Bolt, fixing top anchor plate, $\frac{7}{16}$ in. by $\frac{1}{2}$ in. by 26.....	1	All	3
000191	... Washer, spring, for bolt 000070.....	1	All	1
000812	... Washer, friction, for steering damper.....	2	All	10
000236	... Nut, lock, for fork crown stem (this replaces the domed lock-nut, 010712, when a steering damper is fitted)	1	All	1 1

### FRONT STAND.

011286	... Stand, front, bare.....	1	G3L, G3LS, G80, G80S	8 3
010694	... Bolt, fixing front stand to slider, $1\frac{1}{8}$ in. by $\frac{7}{16}$ in. by 22	2	ditto	10
010724	... Washer, spring, for stand to slider bolt	2	ditto	2
000014	... Pin, split, for stand to slider bolt.....	2	ditto	1
000342	... Bolt, fixing front stand to front mudguard, $\frac{1}{8}$ in. by $\frac{1}{2}$ in. by 26.....	1	ditto	3
000012	... Washer, plain, for stand to mudguard bolt.....	2	ditto	1
000005	... Nut, front stand to mudguard bolt.....	1	ditto	3
014278	... Nut (domed), front stand to mudguard bolt.....	1	ditto	6

### CENTRE STAND.

016340	... Stand, centre, bare.....	1	G3LS, G3LCS, G80S, G80CS	1 7 3
014626	... Bush, for centre stand, .7 ins. long.....	2	G3LS, G80S	8
016435	... Bush, for centre stand, $\frac{1}{8}$ in. long.....	2	G3LCS, G80CS	6
014629	... Stud, hinge, for centre stand, $8\frac{1}{8}$ ins. by $\frac{7}{16}$ in. by 26.....	1	G3LS, G3LCS, G80S, G80CS	2 1
014630	... Spacer, central, for centre stand hinge stud, 4.2 ins. long	1	G3LS, G80S	11
010924	... Spacer, central, for centre stand hinge stud, $3\frac{1}{2}$ ins. long	1	G3LCS, G80CS	1 1
014484	... Spacer, outside right, for centre stand hinge stud, .180 in. thick.....	1	G3LCS, G80CS	8
010912	... Washer, spigot, for centre stand hinge stud.....	2	G3LS, G3LCS G80S, G80CS	4
000002	... Nut, for centre stand hinge stud	2	ditto	4
014627	... Spring, return, for centre stand.....	1	ditto	2 6
016399	... Spring, stop, for centre stand.....	1	ditto	10
000080	... Nut, for centre stand stop spring. (The studs, on which these nuts fit, are listed with the " REAR FORK BRIDGE ")	2	ditto	1
000039	... Washer, plain, for centre stand stop spring fixing nuts	2	ditto	1



PART NUMBER.	DESCRIPTION.	QTY.	USED ON.	PRICE EACH £ s. d.
--------------	--------------	------	----------	-----------------------

### PROP STAND.

014715	... Stand, prop, bare.....	1	All	1 0 3
014713	... Bolt, hinge, for prop stand, 2 $\frac{1}{8}$ ins. by $\frac{7}{8}$ in. by 26.....	1	All	7
014139	... Nut, for prop stand hinge bolt.....	1	All	4
000049	... Pin, split, for prop stand hinge bolt.....	1	All	1
010843	... Spring, return, for prop stand.....	1	All	7

### REAR STAND

017107	... Stand, rear, bare.....	1	G3L, G3LC, G80, G80C	1 12 2
010788	... Bolt, fixing stand to fork end, 1 $\frac{1}{8}$ in. by $\frac{1}{2}$ in. by 26...	2	ditto	10
000008	... Washer, plain, rear stand fixing bolt.....	2	ditto	1
000071	... Nut, rear stand fixing bolt.....	2	ditto	4
017131	... Spring, return, rear stand.....	1	ditto	1 8

### FRONT MUDGUARD.

014957	... Mudguard, front bare.....	1	G3L, G3LS, G80, G80S	1 0 7
013947	... Mudguard, front, bare.....	1	G3LC, G3LCS, G80C, G80CS...	1 13 10
010795	... Bolt, fixing mudguard bridge to right fork slider, $\frac{3}{8}$ in. by $\frac{5}{8}$ in. by 22.....	2	All	4
000192	... Washer, spring, for bridge right fixing bolt.....	2	All	1
010624	... Stud, fixing mudguard bridge to left fork slider, also retains brake anchor stay and bracket for brake cable adjuster, 1 $\frac{1}{8}$ in. by $\frac{5}{8}$ in. by 26 and 22.....	2	All	4
014117	... Washer, lock, for bridge left fixing stud.....	2	All	1
000004	... Nut, for bridge left fixing stud.....	2	All	3
015015	... Stay, for front mudguard.....	1	G3L, G3LS, G80, G80S	4 3
013928	... Stay, for front mudguard, forward position.....	1	G3LC, G3LCS, G80C, G80CS...	11 2
013929	... Stay, for front mudguard, rear position.....	1	ditto	11 10
010795	... Bolt, fixing front mudguard stay to fork slider, $\frac{1}{2}$ in. by $\frac{1}{2}$ in. by 22.....	2	G3L, G3LS, G80, G80S	4
010795	... Bolt, fixing front mudguard stay to fork slider, $\frac{1}{2}$ in. by $\frac{1}{2}$ in. by 22.....	4	G3LC, G3LCS, G80C, G80CS...	4
000192	... Washer, spring, for stay to fork slider bolt.....	2	G3L, G3LS, G80, G80S	1
000192	... Washer, spring, for stay to fork slider bolt.....	4	G3LC, G3LCS, G80C, G80CS...	1
000070	... Bolt, fixing stay to front mudguard, $\frac{9}{16}$ in. by $\frac{1}{2}$ in. by 26	2	G3L, G3LS, G80, G80S	3
000191	... Washer, spring, for stay to front mudguard bolt.....	2	ditto	1
000012	... Washer, plain, for stay to front mudguard bolt.....	2	ditto	1
000005	... Nut, for stay to front mudguard bolt.....	2	ditto	3
012565	... Bolt, fixing stay to front mudguard, $\frac{1}{2}$ in. by 2.BA.....	8	G3LC, G3LCS, G80C, G80CS...	3
000190	... Washer, spring, for stay to front mudguard bolt.....	8	ditto	1
000039	... Washer, plain, for stay to front mudguard bolt.....	8	ditto	1
000080	... Nut, for stay to front mudguard bolt.....	8	ditto	1

PART NUMBER.	DESCRIPTION.	QTY.	USED ON.	PRICE EACH £ s. d.
--------------	--------------	------	----------	-----------------------

### REAR CARRIER.

016418	Carrier, rear, bare.....	1	G3L, G80	1 1 0
014874	Carrier, rear, bare.....	1	G3LS, G80S	1 1 0
000368	Bolt, fixing 016418 carrier at rear.....	2	G3L, G80	4
000364	Bolt, fixing 016418 carrier, right side, at front.....	1	ditto	4
000363	Bolt, fixing 016418 carrier, left side, at front.....	1	ditto	4
	(Existing nuts and washers are used for above bolts.)			
014521	Bolt, fixing carrier at front (replaces 018648 when carrier is fitted).....	2	G3LS, G80S	1 4

### REAR MUDGUARD (G3L & G80).

018131	Mudguard, rear, bare (includes both halves and the two binding bolts).....	1	G3L, G80	1 17 8
016729	Mudguard, rear, forward fixed portion only.....	1	ditto	1 2 1
018058	Mudguard, rear, rear detachable portion only.....	1	ditto	14 9
015117	Bolt, clamping halves of rear mudguard.....	2	ditto	8
000346	Bolt, fixing mudguard to frame bridges, $1\frac{7}{8}$ in. by $\frac{1}{4}$ in. by 26.....	2	ditto	4
000191	Washer, spring, for mudguard bridge bolts.....	2	ditto	1
000005	Nut, for mudguard bridge bolts.....	2	ditto	3
000342	Bolt, fixing mudguard to oil tank bracket, $\frac{1}{2}$ in. by $\frac{1}{2}$ in. by 26.....	1	ditto	3
000172	Washer, plain, for oil tank bracket bolt.....	1	ditto	1
000005	Nut, for oil tank bracket bolt.....	1	ditto	3
016883	Arch, tubular, rear mudguard.....	1	ditto	1 4 9
000270	Stud, in fork end, for tubular arch (also secures lower end of mudguard stay), $1\frac{1}{8}$ in. by $\frac{3}{8}$ in. by 26.....	2	ditto	3
000074	Nut, locking stud in fork end.....	2	ditto	3
000213	Nut (with collar), locking tubular arch and mudguard stay to fork end stud.....	2	ditto	4
000368	Bolt, fixing mudguard to tubular arch, $1\frac{1}{2}$ in. by $\frac{3}{8}$ in. by 26.....	2	ditto	4
016887	Stay, for rear mudguard, left side.....	1	ditto	5 6
016886	Stay, for rear mudguard, right side.....	1	ditto	5 6
000363	Bolt, fixing mudguard to stay, $\frac{1}{2}$ in. by $\frac{3}{8}$ in. by 26.....	2	ditto	4
000192	Washer, spring, for 000368 and 000363 fixing bolts.....	4	ditto	1
000004	Nut, for 000368 and 000363 fixing bolts.....	4	ditto	3

### REAR MUDGUARD. (G3LS & G80S).

018795	Rear mudguard (both portions with joint bolts).....	1	G3LS, G80S	3 7 6
018797	Rear mudguard, forward portion only.....	1	ditto	2 6 10
018799	Rear mudguard, rear portion only.....	1	ditto	1 1 4
018790	Bolt, for mudguard joint.....	4	ditto	5
000166	Washer, for mudguard joint bolt.....	4	ditto	1
014501	Bracket, for bottom of rear mudguard.....	2	ditto	4
000342	Bolt, fixing bracket to rear mudguard, $\frac{1}{2}$ in. by $\frac{1}{2}$ in. by 26.....	2	ditto	3
000012	Washer, plain, for bracket fixing bolt.....	4	ditto	1
000005	Nut, for bracket fixing bolt.....	2	ditto	3
000275	Stud, fixing rear mudguard brackets to frame, $3\frac{3}{8}$ ins. by $\frac{3}{8}$ in. by 26.....	1	ditto	4
000011	Washer, plain, for bracket fixing stud.....	2	ditto	1
000004	Nut, for bracket fixing stud.....	2	ditto	3
000346	Bolt, fixing rear mudguard to frame loop bridge, $1\frac{7}{8}$ ins. by $\frac{1}{2}$ in. by 26.....	1	ditto	4
000191	Washer, spring, for bridge fixing bolt.....	1	ditto	1
000005	Nut, for bridge fixing bolt.....	1	ditto	3
000362	Bolt, fixing rear mudguard to oil tank, $\frac{1}{2}$ in. by $\frac{3}{8}$ in. by 26.....	1	ditto	3
000192	Washer, spring, for mudguard to oil tank bolt.....	1	ditto	1
000174	Washer, plain, for mudguard to oil tank bolt.....	1	ditto	1
000004	Nut, for mudguard to oil tank bolt.....	1	ditto	3

PART NUMBER.	DESCRIPTION.	QTY.	USED ON.	PRICE EACH		
				£	s.	d.
<b>REAR MUDGUARD. (G3LC &amp; G80C).</b>						
015166 ...	Mudguard, rear, bare.....	1	G3LC, G80C ..	2	19	0
000345 ...	Bolt, fixing mudguard to frame top bridge, $1\frac{3}{8}$ in. by $\frac{1}{2}$ in. by 26.....	1	ditto			4
000346 ...	Bolt, fixing mudguard to frame bottom bridge, $1\frac{7}{8}$ in. by $\frac{1}{2}$ in. by 26.....	1	ditto			4
000191 ...	Washer, spring, for mudguard bridge bolts.....	2	ditto			1
000005 ...	Nut, for mudguard bridge bolts.....	2	ditto			3
000342 ...	Bolt, fixing mudguard to oil tank bracket, $1\frac{1}{8}$ in. by $\frac{1}{2}$ in. by 26 .....	1	ditto			3
000172 ...	Washer, plain, for oil tank bracket bolt.....	1	ditto			1
000005 ...	Nut, for oil tank bracket bolt.....	1	ditto			3
015168 ...	Stay, for rear mudguard, front position.....	1	ditto	10	9	
015170 ...	Stay, for rear mudguard, rear position.....	1	ditto	10	9	
000362 ...	Bolt, fixing stays to fork end, $\frac{3}{8}$ in. by $\frac{3}{8}$ in. by 26 ...	2	ditto			4
000011 ...	Washer, plain, for stay to fork end bolt.....	2	ditto			1
000192 ...	Washer, spring, for stay to fork end bolt.....	2	ditto			1
000074 ...	Nut, for stay to fork end bolt.....	2	ditto			3
012565 ...	Bolt, fixing mudguard to stay $\frac{1}{2}$ in. by 2.BA.....	7	ditto			3
000190 ...	Washer, spring, for mudguard to stay bolt.....	7	ditto			1
000039 ...	Washer, plain, for mudguard to stay bolt.....	7	ditto			1
000080 ...	Nut, for mudguard to stay bolt.....	7	ditto			1

**REAR MUDGUARD. (G3LCS & G80CS).**

015362 ...	Mudguard, rear, bare.....	1	G3LCS, G80CS	3	14	4
016352 ...	Bracket, for bottom of rear mudguard.....	2	ditto			5
000342 ...	Bolt, fixing bracket to rear mudguard, $1\frac{1}{8}$ in. by $\frac{1}{2}$ in. by 26	2	ditto			3
000012 ...	Washer, plain, for bracket fixing bolt.....	4	ditto			3
000005 ...	Nut, for bracket fixing bolt.....	2	ditto			3
000275 ...	Stud, fixing rear mudguard brackets to frame, $3\frac{7}{8}$ ins. by $\frac{1}{8}$ in. by 26.....	1	ditto			4
000011 ...	Washer, plain, for bracket fixing stud.....	2	ditto			1
000004 ...	Nut, for bracket fixing stud.....	2	ditto			3
000345 ...	Bolt, fixing rear mudguard to frame loop bridge, $1\frac{3}{8}$ in. by $\frac{1}{2}$ in. by 26.....	1	ditto			4
000191 ...	Washer, spring, for bridge fixing bolt.....	1	ditto			1
000005 ...	Nut, for bridge fixing bolt.....	1	ditto			3
000070 ...	Bolt, fixing mudguard to oil tank bracket $\frac{1}{8}$ in. by $\frac{1}{2}$ in. by 26 .....	1	ditto			3
000005 ...	Nut, for oil tank bracket bolt.....	1	ditto			3
000172 ...	Washer, plain, for oil tank bracket bolt .....	1	ditto			1
000191 ...	Washer, spring, for oil tank bracket bolt.....	1	ditto			1
015324 ...	Tube, supporting rear mudguard.....	1	ditto	17	9	
000369 ...	Bolt, fixing support tube at front, $1\frac{1}{8}$ in. by $\frac{3}{8}$ in. by 26	2	ditto			4
000004 ...	Nut, for support tube bolt.....	2	ditto			3
012565 ...	Bolt, fixing mudguard to support tube, $\frac{1}{2}$ in. by 2.BA...	6	ditto			3
000190 ...	Washer, spring, for mudguard to tube bolt.....	6	ditto			1
000039 ...	Washer, plain, for mudguard to tube bolt.....	6	ditto			1
000080 ...	Nut, for mudguard to tube bolt.....	6	ditto			1

WHEN ORDERING SPARES, IF IN DOUBT REGARDING THE NAMES AND PART NUMBERS OF THE PARTS YOU REQUIRE, PLEASE SEND THE OLD PARTS TO SERVE AS PATTERNS.

