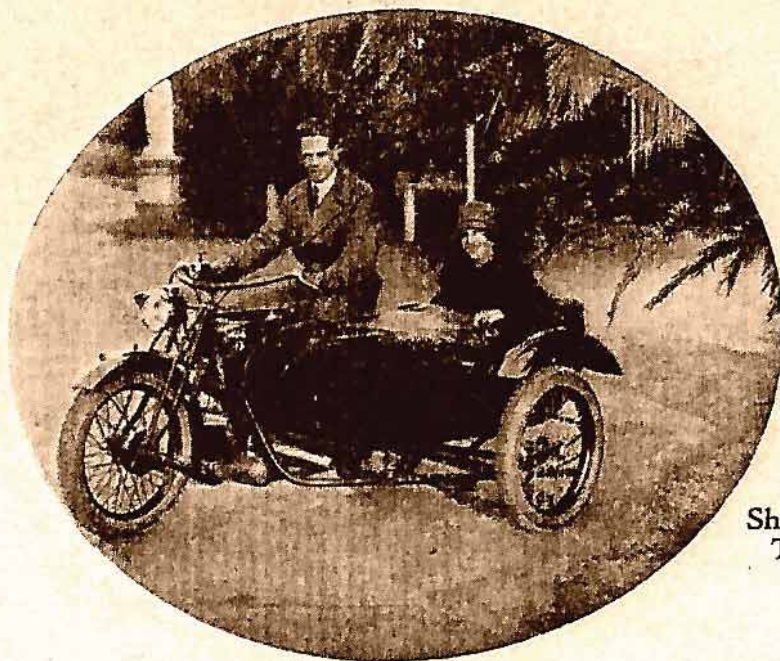


Showing the H-9 or
H-8 A.J.S. Medium
Weight Combination
on the Road



Showing the H-2 Big
Twin Combination

P. & R. WILLIAMS LTD.

80-82 WENTWORTH AVENUE, SYDNEY

Sole Distributors of A.J.S. Motor Cycles for N.S.W.

FOREWORD



IN introducing the 1927 "Master" model A.J.S., we are particularly happy in the knowledge that we are offering a better motor cycle than even the famous forerunners of other years.

We cannot say that 1927 A.J.S. QUALITY is superior to any appreciable extent to last year's productions—in fact, we know that this would be almost impossible, and thousands of satisfied A.J.S. owners in N.S.W. alone would endorse this contention. But detailed alterations in DESIGN are manifest—improvements in construction which ASSIST A.J.S. quality and further increase its durability.

The greatest added appeal of the "Master" models is the unusually high degree of comfort they afford the rider—balloon tyres, Terry soft-top saddles, twist grip control and adjustable fork snubbers are standard attachments—even on the cheapest.

"Scientific Quantity Production" has made A.J.S. a "MASTER" motor cycle—and made it for a price which is competitive with OTHER motor cycles.

Generally speaking, one is apt to value an article at the price he pays for it. In the case of A.J.S., this is not correct, and we want you to know that A.J.S., while amongst the highest priced motor cycles in England, ranks amongst the lowest priced in N.S.W. The value that A.J.S. offers, cannot be doubted.

No matter what type of motor cycle you want—solo or sidecar, sporting or touring—ONE of the eight A.J.S. models is made to suit YOU.

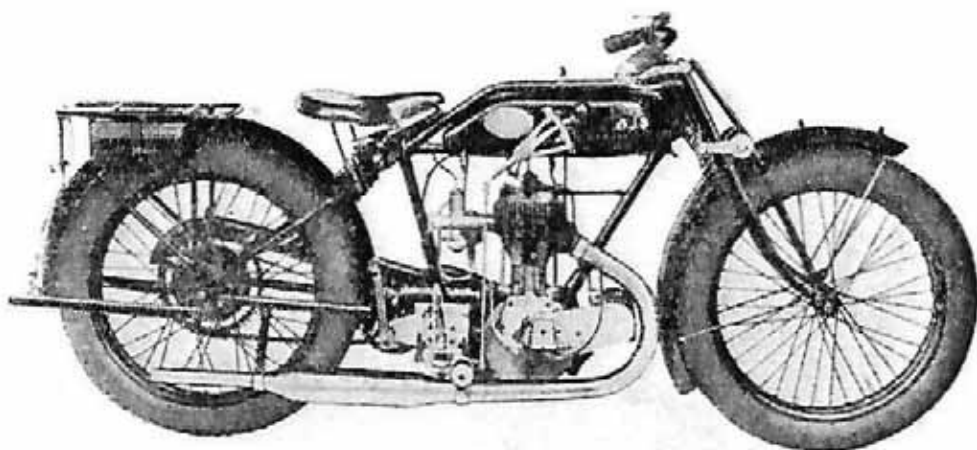
To ride an A.J.S. is to experience the pleasure of care-free control, the restfulness of comfort in riding, the satisfaction of reserve power, the thrill of speed and acceleration, the contentment of reliability, and the pride of ownership.

We would like you to read carefully through our illustrated booklet entitled, "Under the Microscope," in which we have endeavoured to convey an idea of the careful and progressive thought behind the minds of A.J.S. designers, of the conscientious workmanship which lies behind that "INBUILT QUALITY" which is possessed by every A.J.S. motor cycle.

Our agent in your district would like to demonstrate A.J.S. to you, or a call at our showrooms would give us the pleasure of further discussing its merits, and your requirements.

P. & R. WILLIAMS LTD.

80-82 Wentworth Avenue, SYDNEY



Easily the greatest motor cycle value ever offered. Fast, economical, and with an exclusive Australian specification; identical in quality with the most expensive A.J.S. models.

Price
£69/10/.

"Master" Model H5 Sports 3.49 h.p.

— : o : —

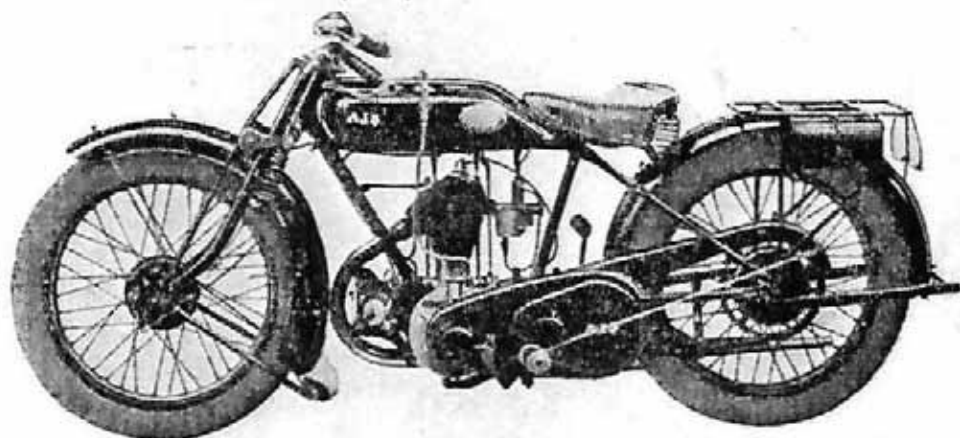
"Master" Model H5 Tourer, 3.49 h.p.

Utility touring model with the same specification and performance as the H-5 sports, but with a most comfortable riding position, afforded by the touring handlebars, illustrated on model H-4 Tourer.

Price £69/10/-

An ideal sporting model, incorporating all the distinctive features of A.J.S. construction. Its appearance and completeness have made it a popular favourite.

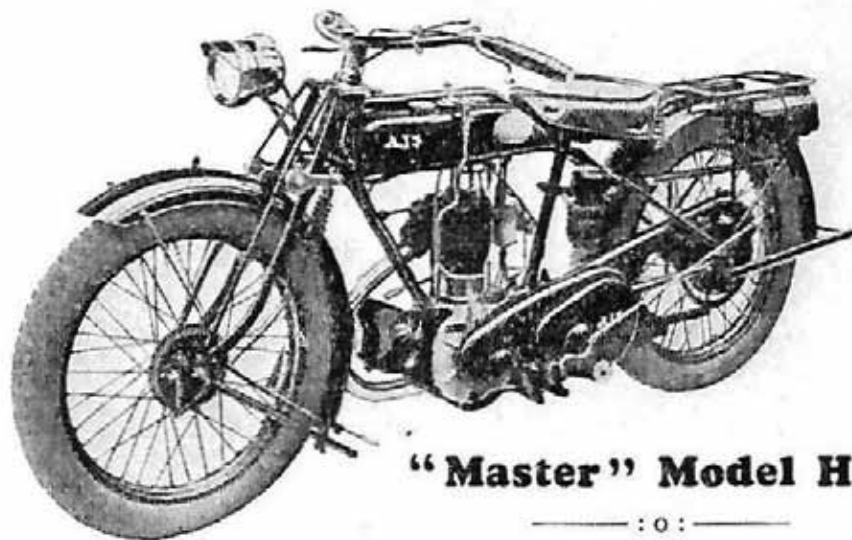
Price
£75/10/-



"Master" Model H4 De Luxe Sports 3.49 h.p.

Favoured by those who desire the maximum comfort in everyday use or long distance touring. General specifications are identical with model H-4 Sports, but Touring handlebars are fitted, giving greatest comfort and ease of control.

Price £75/10/-



"Master" Model H4 Tourer, 3.49 h.p.

— : o : —

Electrical Equipment

Obtainable on all Models

Lucas separate unit 6 volt system. The equipment includes generator, magdyno, battery in separate container, head light (including dimmer), tail-light, ammeter and switches. The magneto and generator (gear driven), although separate units, are housed together, being compact and waterproof. Head lamp gives excellent illumination.

The equipment as fitted to the 4.98 and 7.99 h.p. models is illustrated on model H-9. Equipment for the 3.49 h.p. models is identical, except that a proportionately smaller head lamp is fitted.

A.J.S. 3.49 h.p. "Master" Models

H-5 Sports and H-5 Tourer

ENGINE DESIGN : Bore and stroke 74 x 81 m.m.—349 c.c. Cylinder fins designed for maximum cooling area, eliminating all distortion. Exclusive A.J.S. quick detachable cylinder head, designed to give greatest gas turbulence and lifetime efficiency. Heat treated special aluminium alloy piston, combining light weight with maximum strength, and ensuring absence of engine vibration. Large side by side valves and conical springs. Big end and main shafts running on double row roller bearings. Enclosed valve lifting cam, operating in oil bath.

(Every A.J.S. engine must pass an exacting test both by dynamometer and on the road before leaving the works.)

GEAR BOX : Genuine A.J.S. 3-speed ; ratios 5½, 9 1-3, 14 to 1. Splined main-shaft and stub-cut teeth, ensuring greatest strength, maximum silence and simplicity of operation.

SILENCING SYSTEM : Long round N.P. exhaust pipe with circular expansion chamber, ensuring very quiet and pleasing exhaust note.

TRANSMISSION : Specially designed heavy duty clutch, hand controlled. Renolds best quality chains, ½ in. x 5/16 in., and transmission shock absorber ensuring sweetest possible drive at all engine and road speeds.

LUBRICATING SYSTEM : Visible feed, mechanical pump, gear driven ; additional hand-pump, built into tank.

FRAME LUBRICATION : Tecalemit pressure feed type to all frame and fork bearings.

FRAME DESIGN : Constructed from special quality and heavy gauge steel tubing and steel forgings having great strength, and giving ample ground clearance and low riding position.

FRONT FORKS : Heavy duty A.J.S. forks, constructed from heavy gauge special quality steel tubing, with built-in

adjustable snubbers and adjustable side links, giving greatest ease of control over roughest of roads at all speeds.

IGNITION : Lucas high tension magneto, dust and water-proof.

CARBURETTOR : Binks 2-jet automatic, giving greatest acceleration with maximum economy and simplicity. Twist grip control.

BRAKES : Powerful car type expanding hub brake on rear wheel ; highly efficient and smooth acting.

TANK : Heavy gauge 1-piece tank ; large filler caps, and built in hand oil pump. Petrol capacity for approximately 150-175 miles. Oil capacity approximately 250 miles.

TYRES : English Dunlop balloon (26 x 3.25), ensuring the greatest comfort and road-holding qualities.

MUDGUARDS : Heavy gauge steel mudguards, giving ample tyre clearance and greatest possible protection.

FOOTRESTS : Adjustable footrests, allowing exact position to suit the rider and ensuring natural comfortable riding position.

HANDLEBARS : H-5 Sports only : Sports shape, giving very sporting appearance to the complete machine ; adjustable. H-5 Tourer only : Touring shape (as illustrated opposite on model H-4 Tourer), giving most comfortable wrist-resting riding position.

SADDLE : Brooks No. 251 or Terry No. 1 (optional equipment).

TOOL BAGS : Two large pannier bags, fitted to rear wheel, and including a fine assortment of special and general tools, grease gun, pump and instruction books.

MEASUREMENTS : Wheelbase : approximately 54 ins. Saddle height : approximately 27 ins. (adjustable). Weight : approximately 220 lbs.

— : 0 : —

H-4 Sports and H-4 Tourer

The general specification of these models is similar to models H-5 Sports and Tourer detailed above with the exception of the following additional and De Luxe features :—

BRAKES : Enclosed expanding hub brake, fitted to front wheel as well as rear, hand-controlled, which in conjunction with rear brake, gives wonderful braking efficiency.

DETACHABLE WHEEL : Rear wheel is of the Patent A.J.S. quick detachable type. This can be removed without disturbing the rear chain, brake, or chain case assembly. Positively locked by six dogs and three holding screws. Removal of pull out axle and the three screws (by one spanner) allows the wheel to drop straight out.

(For Time Payment Schedules of this Model see under H-3 Model on separate List)

CHAIN CASES : Enclosed at front and semi-enclosed at rear, ensuring long life of chains and sprockets and freedom from oil splashes.

STANDS : Additional quick action stand to front wheel.

MUDGUARDS : Specially wide valanced front mud-guard, with protecting flap at bottom.

SADDLE : Terry "Colonial" soft top of new semi-bucket shape.

SUGGESTED EXTRAS :

SPEEDOMETER : Smith or Corbin (for all models) - - - - £4/17/6

STEERING DAMPER (all models), £1/2/6

SPOT LIGHTS : Erco £1/-/-, K.B. £1/7/6

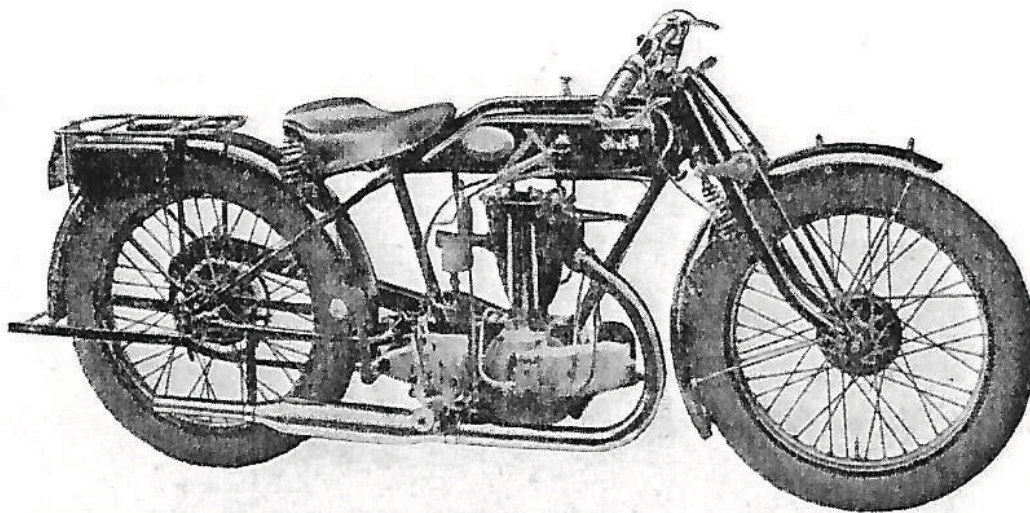
CHAIN PUNCHES : King Dick (each size), 2/6. Crescent (all sizes), 5/6

SIDECAR WIND SCREENS - £2/-/-

PILLION SEATS : Mosely, Medium, 30/-
Large - - - - - 35/-

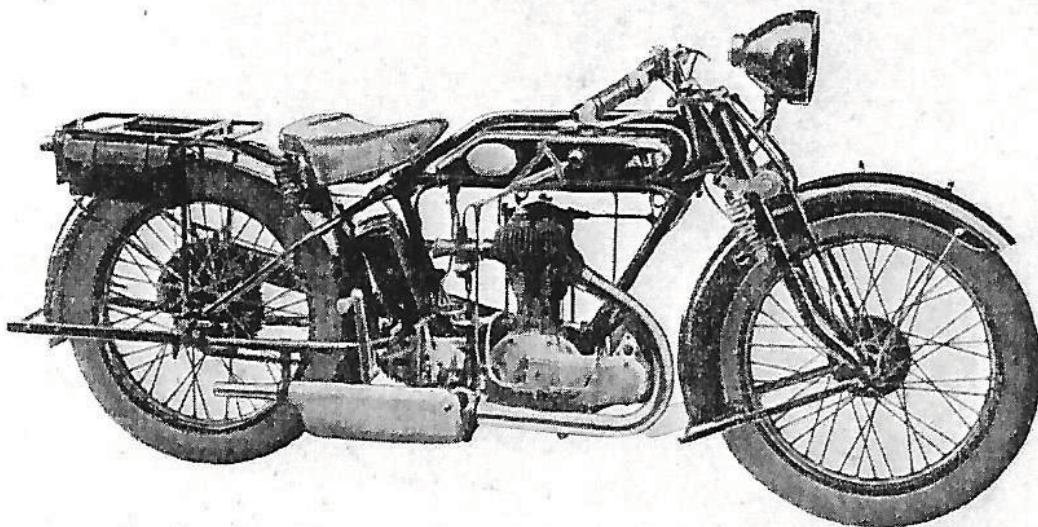
PILLION FOOT RESTS - - - 7/6

A super sports model with close ratios gears — has guaranteed road or track speed of 70-80 m.p.h. and is particularly easy to control at high speeds.



Price
£82/-/-

“Master” Model H6 Super Sports O.H.V. 3.49 h.p.

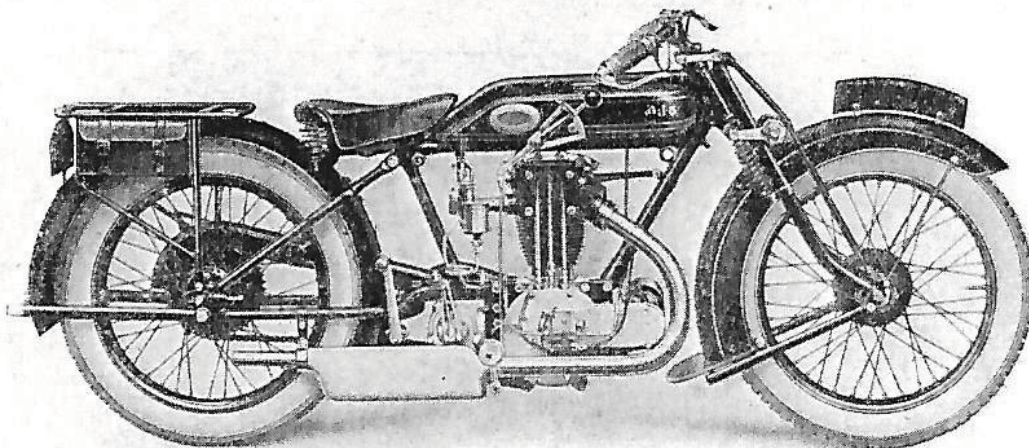


A medium weight solo, which incorporates all the distinctive A.J.S. features, has reserve power, great comfort and is capable of fast speeds without effort.

Price
£83/10/-

“Master” Model H9 De Luxe Sports or Tourer 4.98 h.p.

An unusual combination, of a super-efficient motor and complete De Luxe specification throughout.



Price
£89/10/-

“Master” Model H8 Super Sports O.H.V. 4.98 h.p.

Acetylene Lighting Equipment

The P. & H. No. 120 Lighting Set with A.J.S. brackets, which is standard equipment for all 3.49 h.p. models, is illustrated on the model H-4 Tourer. The P. & H. No. 125 Lighting Set, which is standard equipment for the 4.98 h.p. models, is similar, but proportionately larger.

The P. & H. No. 127 Lighting Set, standard equipment for the 7.99 h.p. models, is illustrated on the model H-2.

Ballon Tyres, Terry Saddles, Twist Grip Control, Mechanical Lubrication and Patent A.J.S. Cushion Drive are standard fittings on every A.J.S. model.

A.J.S. "Master" Model H6, 3.49 h.p.

O.H.V. Super Sports Model

Specially selected O.H.V. engine with O.H.V. tulip inlet and exhaust valves, operated by special Duralumin hollow push rods with ball steel ends, and solid Duralumin rockers. Large exhaust port and pipe. Exceptionally high efficiency.

GEAR BOX: Special close ratio gear-box with ratios 5½, 6½ and 10.3 to 1 of similar general design to side valve gear-box.

FRAME DESIGN AND EQUIPMENT: Similar to

model H-4, but with ridge covered chain cases only; front mudguard same as model H-5, and rear stand only. Special down turned handlebars as illustrated, or handlebars as H-4 (optional equipment).

A.J.S. "Master" Model H9, 4.98 h.p.

Side Valve De Luxe Sports or Tourer

(Suitable for Solo or Sidecar)

ENGINE: Bore and stroke 84 x 90 m.m.—4.98 c.c. Cylinder fins designed for maximum cooling area, eliminating all distortion. Exclusive A.J.S. quick detachable cylinder head, designed to give greatest gas turbulence and lifetime efficiency. Heat treated special aluminium alloy piston, combining light weight with maximum strength, and ensuring absence of engine vibration. Large side by side valves and conical springs. Big end and main shafts running on double row roller bearings. Enclosed valve lifting cam, operating in oil bath.

GEAR BOX: Genuine A.J.S. 3-speed. Ratios 4.6, 8.3 and 15 to 1, with splined mainshaft and stub-cut teeth, ensuring greatest strength, maximum silence and simplicity of operation. Close ratio gear box with ratios 4.6, 6 and 9.8 to 1 (optional equipment).

SILENCING SYSTEM: Long, round exhaust pipe with oval expansion chamber, ensuring very quiet and pleasing exhaust note.

TRANSMISSION: Specially designed heavy duty clutch, suitable for either solo or sidecar work, hand controlled. Renolds chains, ½ in. x ½ in. and transmission shock absorber, ensuring sweetest possible drive at all engine and road speeds.

CHAIN CASES: Totally enclosed front chain case and semi-enclosed at rear, ensuring long serviceability of chains and sprockets and absolute freedom from oil splashes.

LUBRICATING SYSTEM: Visible feed mechanical pump with additional hand pump built into tank.

FRAME LUBRICATION: Tecalemit pressure feed type to all frame and fork bearings.

FRAME DESIGN: Constructed from special quality and heavy gauge steel tubing and steel forgings. Ample strength for either sidecar or solo use; ample ground clearance and low riding position.

FRONT FORKS: Heavy duty A.J.S. forks constructed from special quality and heavy gauge steel tubing, with built-in shock absorbers and adjustable side links, giving greatest ease of control at all speeds. Ample strength for sidecar use.

IGNITION: Lucas high tension magneto, dust and water-proof.

CARBURETTOR: Binks 2-jet automatic, giving greatest acceleration with maximum power and economy. Twist grip control.

BRAKES: Enclosed expanding hub brakes on front and rear wheels; powerful and smooth acting. Rear—foot controlled; front—hand-controlled.

TANK: Heavy gauge 1-piece tank with large filler caps and built in hand oil pump. Petrol capacity for approximately 150-175 miles. Oil capacity for approximately 250 miles.

TYRES: Dunlop wired-on Balloons (26 x 3.25), ensuring greatest comfort and road holding qualities.

MUDGUARDS: Rear—wide plain steel mudguard; front—wide valanced mudguard, both giving good protection to rider and machine.

FOOTRESTS: Adjustable, allowing exact position to suit rider.

SADDLE: Terry "Colonial" soft top of the new semi-bucket shape.

HANDLEBARS: Comfortable sporting shape, with wrist-resting riding position.

TOOL BAGS: Two large pannier bags fitted to rear carrier and including a fine assortment of special and general tools, grease gun, pump and instruction books.

MEASUREMENTS: Wheelbase 56 ins.; saddle height approximately 28 ins. (adjustable); ground clearance 5 ins. clear. Weight approximately 274 lbs.

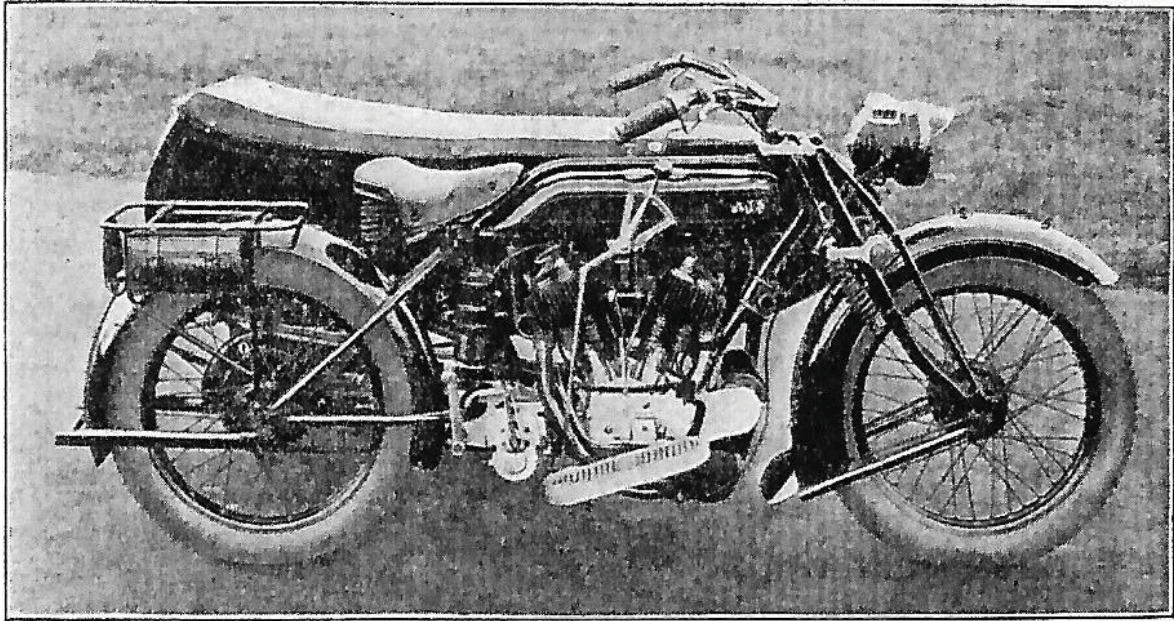
A.J.S. "Master" Model H8, 4.98 h.p.

O.H.V. De Luxe Sports

(Suitable for Solo or Sidecar)

This differs to the model described above in the engine design only. It is fitted with an O.H.V. motor of very high efficiency, and is capable of particularly high speeds both as a solo or sidecar machine. Close ratio gear box is standard fitting, but wide ratio box is optional.

A.J.S. Sidecar Outfits



A.J.S. "Master" Model H2, 7.99 h.p.

A big twin designed for heavy duty sidecar work, and with a reputation for economy and reliability not equalled by any other heavy weight motor cycle.

As a solo machine, it is the choice of those who favour a big twin for long distance touring.

Price: Solo £93/10/- Standard Outfit £130/-/-

SPECIFICATIONS:

ENGINE: Twin cylinder (74 x 93 m.m. bore and stroke 7.99 c.c.) with large cooling fins. Exclusive A.J.S. quick detachable cylinder heads designed to give greatest possible power at low engine speeds. Materials and general design similar to the model H-9.

GEAR BOX: Exactly the same as model H-9.

SILENCING SYSTEM: Two exhaust pipes of large diameter lead into expansion chamber of big capacity. Gases are then carried by long straight pipe to rear of machine ensuring absolute silence and efficiency.

TRANSMISSION: Specially designed heavy duty "dry" clutch suitable for sidecar work, hand controlled. Reynolds 3in. x 3in. chains and engine shock absorber, ensuring sweet running at low speeds. Ridge covered chain cases.

FRAME DESIGN: Constructed from special quality and heavy gauge steel tubing and steel forgings with reserve strength for the demands of heavy duty sidecar work.

FRONT FORKS: Heavy duty A.J.S. forks, constructed from special quality and heavy gauge steel tubing with built in adjustable snubbers and adjustable side links; designed to withstand the stresses of heavy duty sidecar uses.

TANK: Heavy gauge 1-piece tank with large filler caps and built in hand oil pump. Petrol capacity for approximately 125 miles. Oil capacity for approximately 225 miles used with sidecar.

TYRES: English Dunlop wired-on Balloons (26 x 3.50), giving great comfort.

FOOTBOARDS: Comfortable rubber studded footboards with heel rests.

HANDLEBARS: Long, Touring shape, designed to give the most comfortable riding position.

DETACHABLE AND INTERCHANGEABLE WHEELS: Both front and rear wheels are of the patent A.J.S. quick detachable type and are interchangeable.

MEASUREMENTS: Wheelbase 57 ins.; ground clearance 5½ ins.; saddle height approximately 27 ins. (adjustable); weight approximately 316 lbs.

LUBRICATING SYSTEM, IGNITION SYSTEM, CARBURETTOR, BRAKES, MUDGUARDS, TOOL BAGS AND SADDLE, ARE EXACTLY THE SAME AS MODEL H-9.

Heavy Duty Touring or Utility Outfit.

MODEL H-2, 7.99 H.P. with Heavy Weight Goulding Chassis and Touring Sidecar Body: A high powered big twin combination which affords the greatest

comfort to rider and passenger. Excellent top-gear performance and sweet silent running are factors which commend themselves to all who desire care-free control.

Medium Weight Sports or Utility Outfits.

MODEL H-9 4.98 H.P. A.J.S. with Goulding Medium Weight Chassis and Williamson-Page Sports Body: A medium combination with a De Luxe equipment, which satisfactorily fulfils the requirements of one who wants an economical outfit for average touring. It is capable of 50 m.p.h. with rider and passenger aboard; has a high degree of comfort; will

do 65-70 m.p.g. and is a surprisingly good top-gear **SIDECAR:** Goulding chassis fitted with transverse rear springs and coil front springs. The body has deep cushioned upholstery, padded arm rests, and ample locking space. A combination of good chassis design and well made sidecar body, providing excellent comfort to the passenger.

Standard Outfit £116/-/-

MODEL H-8 4.98 O.H.V. A.J.S. with Goulding Medium Weight Chassis and Williamson-Page Sports Body: A real sporting outfit, capable of high road

speeds; commanding the admiration of all motor cyclists with its sporty appearance—rendering full satisfaction to its owner by its highly efficient performance.

Standard Outfit £122/-/-