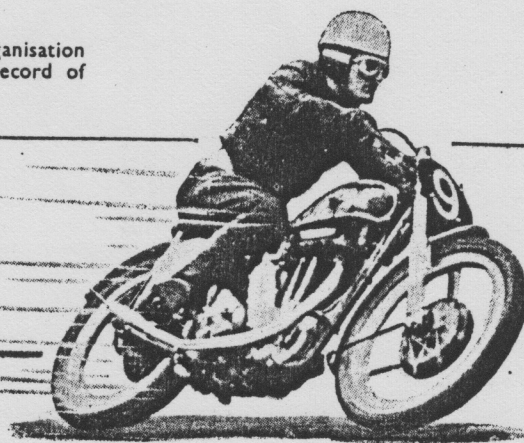


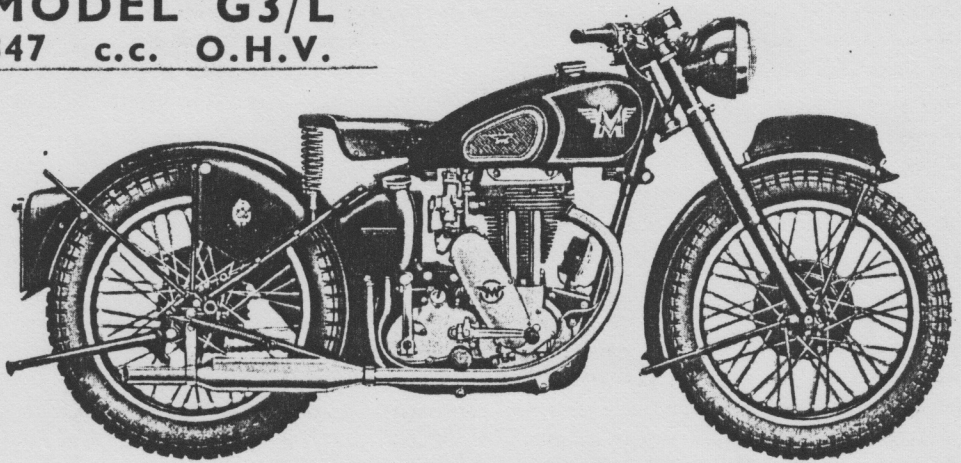
# Introducing the 1949 MATCHLESS

ALTHOUGH visibly little altered for the 1949 season, the Matchless range of motor cycles have been almost entirely redesigned. For many years famous for their outstanding performance, superb steering and mechanical silence, the new models achieve an even higher standard and more than justify the many months of painstaking work devoted to them by our Design and Experimental Departments.

The Matchless is backed by an organisation that enjoys the longest unbroken record of production in the industry.

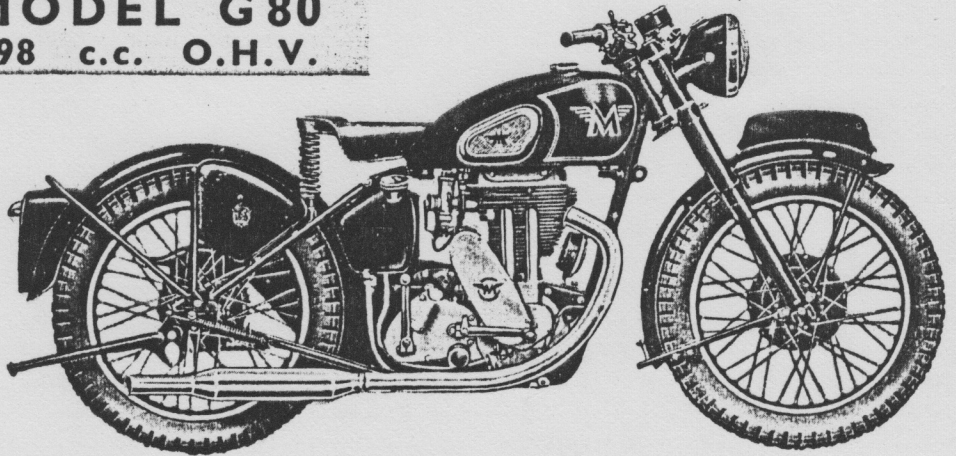


**MODEL G3/L**  
347 c.c. O.H.V.



OUTSTANDING PERFORMANCE  
EXTREME ECONOMY

**MODEL G80**  
498 c.c. O.H.V.



IDEALLY SUITED FOR  
SOLO OR SIDECAR

---

**COMPETITION MODELS**

Competition versions of the Models G3/L and G80 will continue to be manufactured for allocation to recommended riders.

---

## SPECIFICATION

### ENGINE

	Bore	Stroke	Capacity
MODEL G3/L	69 m.m.	93 m.m.	347 c.c.
MODEL G80	82.5 m.m.	93 m.m.	498 c.c.

Single port O.H.V., all moving parts totally enclosed and pressure lubricated, 3-row caged roller big end bearing, Duplex hairpin valve springs, Stellite tipped valves, individually balanced flywheels, low clearance wire wound piston, down draught inlet port, heavily finned cylinder and cylinder head.

### LUBRICATION

Full dry sump system with large capacity Duplex rotary reciprocating plunger pump driven from timing side mainshaft and separate oil tank.

### CARBURETTOR

Semi-automatic Amal with adjustable pilot jet for slow running.

### GEAR BOX

Heavyweight 4 speed with positive type footgear change. Multi-plate clutch with handlebar control.

### TRANSMISSION

Primary chain enclosed in oil bath case. Lubricated cam type shock absorber. Rear chain protected by efficient deep section guard.

### TANKS

3 Gallon welded steel petrol tank and 4 pint oil tank of similar construction incorporating detachable fabric filter.

### FRAME

Duplex cradle with integral sidecar lugs and forged rear fork ends.

### FORKS

Self lubricating, hydraulically damped "Teledraulic."

### BRAKES

Highly efficient large diameter internal expanding with chromidium drums and finger adjustment.

### SADDLE

Large Lycett spring seat with adjustable front and rear mounting.

### TYRES

G3/L	...	3.25" x 19" Front and Rear.
G80	...	3.25" x 19" Front and 3.50" x 19" Rear.

### MUDGUARDS

Deep section steel guards, portion of rear guard quickly detachable for wheel accessibility.

### ELECTRICAL EQUIPMENT

Magneto and dynamo driven by roller chains in oil bath cases. Large diameter headlamp with fluted domed glass and new type chromium-plated rear lamp of exclusive design. High frequency horn, constant voltage control, central battery and handlebar mounted dipper switch and horn button.

### FINISH

Three thicknesses of best quality black stove enamel on Bonderised surface. Exhaust pipe, handlebars, wheel rims, saddle springs, etc., heavily chromium plated. Fuel tank and wheel rims silver lined.

### EQUIPMENT

Complete set of high quality tools, grease gun, tyre pump and comprehensive Instructional Manual.

All prices and specifications are subject to alteration without notice, and all motorcycles and equipment are sold subject to the limited guarantee printed herein.

## NOTICE

We do not appoint agents for the sale on our behalf of our motorcycles or other goods, but we assign to Motorcycle Dealers areas in which we supply to such Dealers exclusively for re-sale in such areas. No such Dealer is authorised to transact any business, give any warranty, make any representation, or incur any liability on our behalf.

## GUARANTEE

We give the following guarantee with our motorcycles, motorcycle combinations and sidecars, which is given in place of any implied conditions, warranties or liabilities whatsoever, statutory or otherwise, all such implied conditions, warranties and liabilities being in all cases excluded. Any statement, description, condition or representation contained in any catalogue, advertisement, leaflet or other publication shall not be construed as enlarging, varying or overriding this guarantee. In the case of machines (a) which have been used for 'hiring out' purposes, or (b) any motorcycle and/or sidecar used for any dirt track, cinder track or grass track racing or competitions (or any competition of any kind within an enclosure for which a charge is made for admission to take part in or view the competition) or (c) machines from which the trade mark, name or manufacturing number has been removed, no guarantee, condition or warranty of any kind is given or is to be implied.

We guarantee, subject to the conditions mentioned below, that all precautions which are usual and reasonable have been taken by us to secure excellence of materials and workmanship, but this guarantee is to extend and be in force for six months only, from date of purchase, and damages for which we make ourselves responsible under this guarantee are limited to the free supply of a new part in exchange for the part of the motorcycle, motorcycle combination or sidecar which may have proved defective. We do not undertake to replace or refix, or bear the cost of replacing or refixing such new parts in the motorcycle, motorcycle combination or sidecar. We undertake, subject to the conditions mentioned below, to make good at any time within six months any defects in these respects. As motorcycles, motorcycle combinations and sidecars are easily liable to derangement by neglect, or misuse, this guarantee does not apply to defects caused by wear and tear, misuse, or neglect. The term 'misuse' shall include amongst others the following acts:—

1. The attaching of a sidecar to a motorcycle in such a manner as to cause damage or calculated to render the latter unsafe when ridden.
2. The use of a motorcycle or of a motorcycle and sidecar combined, when carrying more persons of a greater weight than that for which the machine was designed by the manufacturers.
3. The attaching of a sidecar to a motorcycle by any form of attachment not provided, supplied or approved by us, or to a motorcycle which is not designed for such use.

Any motorcycle, motorcycle combination or sidecar sent to us to be plated, enamelled, or repaired will be repaired upon the following conditions, i.e., we guarantee that all precautions which are usual and reasonable have been taken by us to secure excellence of materials and workmanship, such guarantee to extend and be in force for three months only from the time such work shall have been executed or until the expiration of the six months above referred to, and this guarantee is in lieu and in exclusion of any common law or statute, warranty or condition, and the damages recoverable are limited to the cost of any further work which may be necessary to amend and make good the work found to be defective.

## CONDITIONS OF GUARANTEE

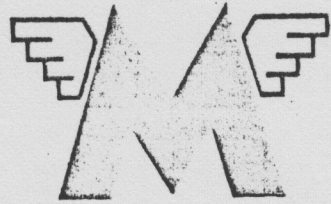
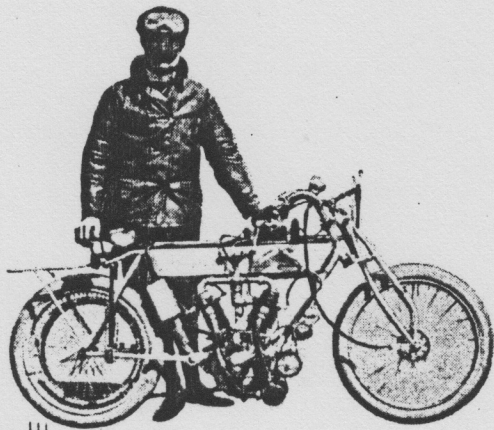
If a defective part should be found in our motorcycles, motorcycle combinations or sidecars, or in any part supplied by way of exchange before referred to, it must be sent to us CARRIAGE PAID, and accompanied by an intimation from the owner that he desires to have it repaired or exchanged free of charge under our guarantee, and he must also furnish us at the same time with the number of the machine, the date of the purchase or the date when the alleged defective part was exchanged as the case may be.

Failing compliance with the above, such articles will lie here AT THE RISK OF THE OWNER, and this guarantee, and any implied guarantee, warranty or condition shall not be enforceable.

We do not guarantee specialities such as tyres, saddles, chains, electrical equipment, lamps, etc., or any component parts supplied to the order of the Purchaser differing from standard specifications, supplied with our motorcycles, motorcycle combinations, sidecars, or otherwise.

## LIST OF OPTIONAL EQUIPMENT

Detachable Luggage Carrier, 80 m.p.h. Speedometer. 120 m.p.h. Speedometer. Mudguard type Pillion Seat with Pillion Footrests.



*Manufacturers of*  
**HIGH QUALITY MOTOR CYCLES  
FOR OVER HALF A CENTURY**  
**MATCHLESS MOTOR CYCLES**

**PLUMSTEAD ROAD • LONDON • S.E.18**

*Telephone :*  
WOOLWICH 1223

*Telegrams :*  
MATCHLESS, WOL, LONDON

