

NOTICE We do not appoint agents for the sale on our behalf of our motor cycles or other goods, but we assign to Motor Cycle Dealers areas in which we supply to such Dealers exclusively for re-sale in such areas. No such Dealer is authorised to transact any business, give any warranty, make any representation, or incur any liability on our behalf.

GUARANTEE We give the following guarantee with our motor cycles, motor cycle combinations and sidecars, which is given in place of any implied conditions, warranties or liabilities whatsoever, statutory or otherwise, all such implied conditions, warranties and liabilities being in all cases excluded. Any statement, description, condition or representation contained in any catalogue, advertisement, leaflet or other publication shall not be construed as enlarging, varying or overriding this guarantee. In the case of machines (a) which have been used for 'hiring-out' purposes, or (b) any motor cycle and/or sidecar used for any dirt track, cinder track or grass track racing or competitions (or any competition of any kind within an enclosure for which a charge is made for admission to take part in or view the competition) or (c) machines from which the trade mark, name or manufacturing number has been removed, no guarantee, condition or warranty of any kind is given or is to be implied.

We guarantee, subject to the conditions mentioned below, that all precautions which are usual and reasonable have been taken by us to secure excellence of materials and workmanship, but this guarantee is to extend and in force for six months only from date of purchase, and damages for which we make ourselves responsible under this guarantee are limited to the free supply of a new part in exchange for the part of the motor cycle, motor cycle combination or sidecar which may have proved defective. We do not undertake to replace or refix, or bear the cost of replacing or refixing such new parts in the motor cycle, motor cycle combination or sidecar. We undertake, subject to the conditions mentioned below, to make good at any time within six months any defects in these respects. As motor cycles, motor cycle combinations and sidecars are easily liable to derangement by neglect, or misuse, this guarantee does not apply to defects caused by wear and tear, misuse or neglect. The term 'misuse' shall include amongst others the following acts:—

1. The attaching of a sidecar to a motor cycle in such a manner as to cause damage or calculated to render the latter unsafe when ridden.
2. The use of a motor cycle or of a motor cycle and sidecar combined, when carrying more persons or a greater weight than that for which the machine was designed by the manufacturer.
3. The attaching of a sidecar to a motor cycle by any form of attachment not provided, supplied or approved by us, or to a motor cycle which is not designed for such use.

Any motor cycle, motor cycle combination or sidecar sent to us to be plated, enamelled or repaired will be repaired upon the following conditions, i.e. we guarantee that all precautions which are usual and reasonable have been taken by us to secure excellence of materials and workmanship, such guarantee to extend and be in force for three months only from the time such work shall have been executed or until the expiration of the six months above referred to, and this guarantee is in lieu and in exclusion of any common law warranty, warranty or condition, and the damages recoverable are limited to the cost of any further work which may be necessary to amend and make good the work found to be defective.

CONDITIONS OF GUARANTEE If a defective part should be found in our motor cycles, motor cycle combinations or sidecars, or in any part supplied by way of exchange before referred to, it must be sent to us **CARRIAGE PAID**, and accompanied by an intimation from the owner that he desires to have it repaired or exchanged free of charge under our guarantee, and he must also furnish us at the same time with the number of the machine, the date of the purchase or the date when the alleged defective part was exchanged as the case may be.

Failing compliance with the above, such articles will lie here **AT THE RISK OF THE OWNER**, and this guarantee and any implied guarantee, warranty or condition shall not be enforceable.

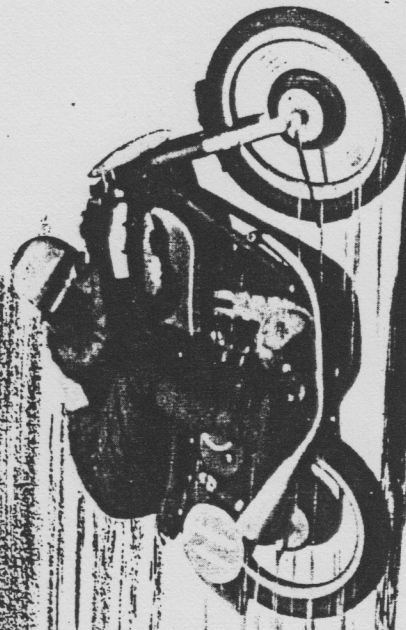
We do not guarantee specialities such as tyres, saddles, chains, electrical equipment, lamps, etc., or any component parts supplied to the order of the Purchaser differing from standard specifications, supplied with our motor cycles, motor cycle combinations, sidecars, or otherwise.

LIST OF OPTIONAL EQUIPMENT Detachable Luggage Carrier. Speedometer. Mudguard type Pillion Seat. Folding Pillion Footrests. 80m.p.h. Speedometer. 120 m.p.h.

Printed in England

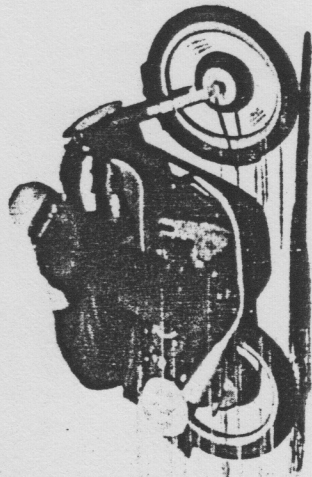
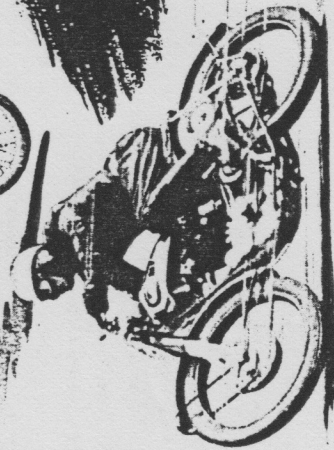
C.P.16733/10/48/30m.

ALIS



The Race-bred Motor Cycle!

Introducing the **A.J.S.** 1949 Models



DESIGNED and manufactured by enthusiastic motorcyclists, the A.J.S. motto might well be "Produced by Motorcyclists for Motorcyclists."

Everybody in the A.J.S. organisation, from the Directors downwards, are enthusiastic motorcyclists, and it is therefore not surprising that A.J.S. Motor Cycles have achieved such an enviable reputation in all spheres of motorcycling.

With the introduction of the Model 7R the A.J.S. Range for the 1949 Season efficiently covers the need of everybody from the touring enthusiast to the competitor in International Road Races.

AMC

1949

Specification

ENGINE

Capacity	Stroke
347 c.c.	93 m.m.
498 c.c.	93 m.m.

Pushrod operated O.H.V. Hairpin valve springs. Dry sump lubrication. Magneto ignition. Amal carburettor. Three-row caged roller big end bearing. Engine shaft cam type shock absorber. Large capacity oil pump.

GEARBOX
Four-speed oil-lubricated with multi-plate clutch. Positive stop foot gear change.

FRAME
Heavy gauge Duplex cradle with front, rear and centre prop stands. Sidecar lugs integral.

FORKS
Telescopic hydraulically damped Teledraulics, with integral headlamp brackets.

TANKS
Welded steel. 3 gallons petrol—4 pints oil. Hand lined in gold.

BRAKES
7½" dia. with cast brakedrums and water excluders.

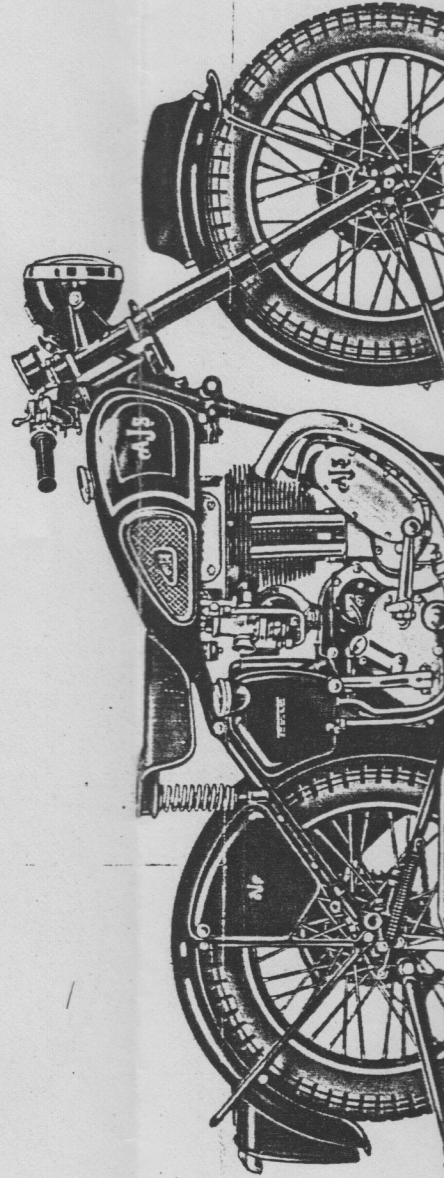
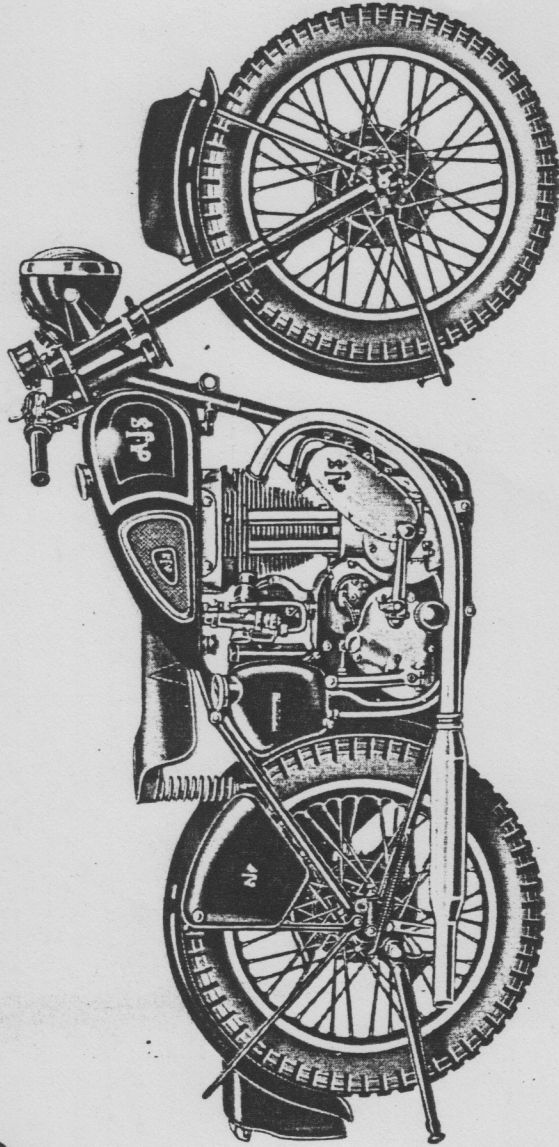
SADDLE
Large spring seat with ample front and rear adjustment. Chromium plated springs.

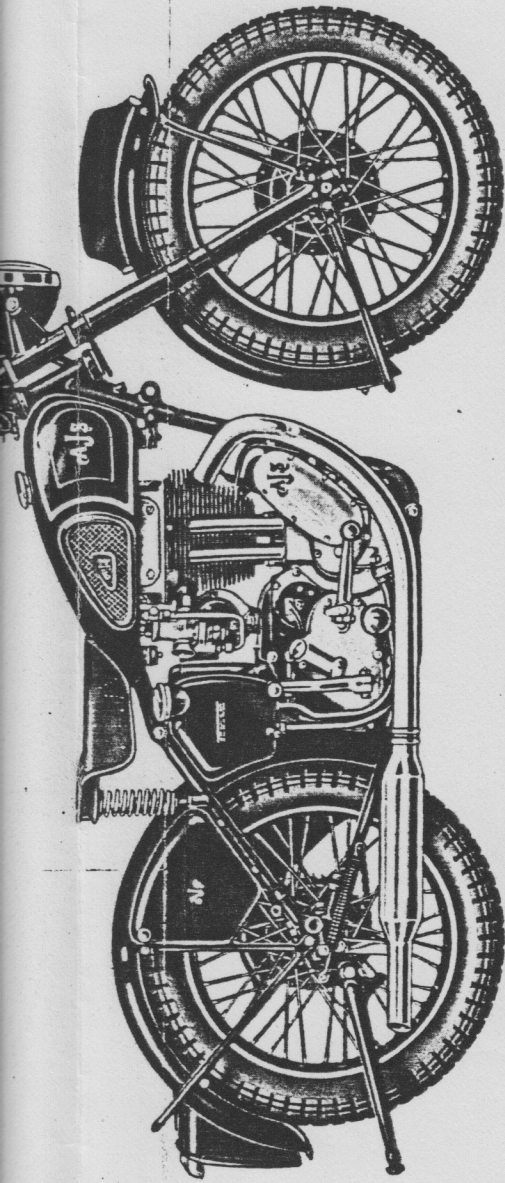
WHEELS

Model 16M	- 3.25" x 19" Front and Rear.
Model 18	- 3.25" x 19" Front.
	3.50" x 19" Rear.

Adjustable taper roller bearings.

ELECTRICAL EQUIPMENT
Chain-driven separate dynamo. 8" headlamp. New type rear light and electric horn. Constant voltage control.





BRAKES
7 1/2" dia. with cast brakedrums and water excluders.

SADDLE
Large spring seat with ample front and rear adjustment. Chromium plated springs.

WHEELS
Model 16M - 3.25" x 19" Front and Rear.
Model 18 - 3.25" x 19" Front,
3.50" x 19" Rear.
Adjustable taper roller bearings.

ELECTRICAL EQUIPMENT
Chain-driven separate dynamo. 8" headlamp. New type rear light and electric horn. Constant voltage control.

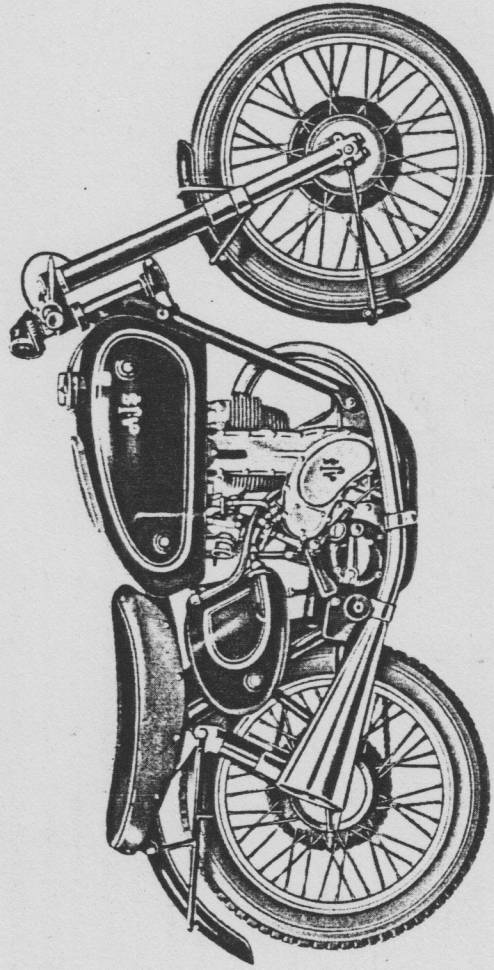
EQUIPMENT
Comprehensive set of tools, grease gun, tyre pump and Instruction Manual.

COMPETITION MODELS

Space does not permit an illustration of the 350 c.c. and 500 c.c. Competition Models, but these will be continued for 1949 with many improvements.

Winners of the 1947 and 1948 Scottish Six Days' Trial.

All prices and specifications are subject to alteration without notice, and all motor cycles and equipment are sold subject to the limited guarantee printed herein.



The MODEL 7R

Introduced with the object of providing a racing machine capable of performing with distinction in events of International importance, the Model 7R has had a brilliant first season. In addition to a number of major successes, 10 of the 20 Replicas awarded in the 1948 Junior T.T. were won by A.J.S. riders, and the 4th place in the Senior T.T. was obtained by a private owner of a Model 7R competing in his second I.O.M. T.T. in one week.

348 c.c. O.H.C. Engine, 74 m.m. bore, 81 m.m. stroke. Welded Duplex cradle frame with Teledraulic front and rear suspension. Double leading shoe brakes. L.A. cylinder head, fuel and oil tanks, magnesium crankcase, timing case and brake drums.