

SMITHS MOTOR CYCLE EQUIPMENT

1954 - 1958

SMITHS

Motor Cycle Equipment

ABBREVIATIONS USED

- RF Rigid Frame
- SF Spring Frame
- RS Rear Sprung
- PRF Pivoting Rear Fork
- SAF Swinging Arm Frame
- FDS Final Drive Sprocket
- RCS Rear Chain Sprocket

Make	Model & Description	Year	Speedometer		Rev Indicator	Flexible Drive †		Gear Box	Gear Box Pinion	Gear Ring	Speedometer Bracket	K.L.G. Sparking Plugs
			Miles	Kiloes		Complete	Length					
A.J.S.	16M 350cc OHV R.F.	1954	S.433/1/L*	S.433/5/L*		53395/1	4.6"	5283/66/1			25578/1	FE.80**
	16M 350cc OHV R.F.	1955	S.467/153*	S.467/157*		53395/1	5.15"	5283/66/1				FE.80**
	16MS 350cc OHV S.F.	1954	S.480/3/L*	S.480/7/L*		53395/1	5.15"	5283/66/1			25578/1	FE.80**
	16MS 350cc OHV S.F.	1955	S.467/153*	S.467/157*		53395/1	5.15"	5283/66/1			25578/1	FE.80**
	16MC 350cc OHV COME.R.F.	1954-58	S.467/163*	S.467/167*		53395/1	5.15"	5283/66/1				FE.80**
	16MC 350cc OHV COME.R.F.	1954	S.433/1/L*	S.433/5/L*		53395/1	4.6"	5283/66/1				FE.80**
	16MC 350cc OHV COME.R.F.	1955-56	S.491/3/L*	S.491/7/L*		53395/1	4.6"	5283/66/1				FE.80**
	16MC 350cc OHV COME.R.F.	1957-58	S.491/3/L*	S.491/7/L*		53395/1	5.15"	5283/66/1				FE.80**
	16MCS 350cc OHV Scrambler	1954-58	S.491/3/L*	S.491/7/L*		53395/1	5.15"	5283/66/1				FE.80**
	16MCS 350cc OHV Scrambler Single	1958			RC.95/1	52091/5	2.63"	70549/1				FE.80**
	18 500cc OHV R.F.	1954	S.433/1/L*	S.433/5/L*		53395/1	4.6"	5283/66/1			25578/1	FE.80**
	18 500cc OHV R.F.	1955	S.467/163*	S.467/167*		53395/1	5.15"	5283/66/1				FE.80**
	18S 500cc OHV S.F.	1954	S.480/3/L*	S.480/7/L*		53395/1	5.15"	5283/66/1			25578/1	FE.80**
	18S 500cc OHV S.F.	1955-58	S.467/163*	S.467/167*		53395/1	5.15"	5283/66/1				FE.80**
	18CS 500cc OHV COME.S.F.	1954-58	S.491/3/L*	S.491/7/L*		53395/1	5.15"	5283/66/1				FE.80**
	18CS 500cc OHV Scrambler	1958			RC.95/1	52091/5	2.63"	70549/1				FE.80**
	20 500cc Twin S.F.	1954	S.480/3/L*	S.480/7/L*		53395/1	5.15"	5283/66/1			25578/1	FE.80**
	20 500cc Twin S.F.	1954-55	S.467/163*	S.467/167*	RC.95	52091/5	2.24"	70549/1				FE.80**
	20 500cc Twin S.F.	1955-58	S.467/163*	S.467/167*	RC.95	53395/1	5.15"	5283/66/1			25578/1	FE.80**
	20 500cc Twin S.F.	1956-57	S.467/163*	S.467/167*	RC.95/1	52091/5	2.24"	70549/1				FE.80**
30 600cc Twin S.F.	1956-58	S.467/163*	S.467/167*		53395/1	5.15"	5283/66/1			25578/1	FE.80**	
30 600cc OHV Touring	1958			RC.95/1	52091/5	2.24"	70549/1				FE.80**	
30CS 600cc OHV Scrambler	1958			RC.95/1	53395/1	5.15"	5283/66/1				FE.80**	
30CS 600cc OHV Scrambler	1958			RC.95/1	52091/5	2.24"	70549/1				FE.80**	
31 650cc OHV Touring	1958			RC.95/1	53395/1	5.15"	5283/66/1			25578/1	FE.80**	
31 650cc OHV Touring	1958			RC.95/1	52091/5	2.24"	70549/1				FE.80**	
31CS 650cc OHV Scrambler	1958			RC.95/1	53395/1	5.15"	5283/66/1				FE.80**	

† For Separate Inner & Outer Flexible Drives See Chart I (Back Cover)
 * For Speedometer with Alternative Speed Range See Chart II (Back Cover)
 ** 3 Earth-Point Version
 ‡ Optional Equipment
 *** Recommendation on Request According to Tune & Fuel etc.

This scan is explicit for non-commercial use and is not intended for financial or material gain by anyone

Make	Model & Description	Year	Speedometer		Rev Indicator	Flexible Drive†		Gear Box Function	Gear Ring	Speedometer Bracket	C.A.S. Specialty Range	
			Miles	Kilos		Complete	Length					
ARLEN (Cont.)	V1 500cc OHV Red Hunter	1956-58	S.467/195	S.467/199		52091/5	31 7"			31-647-159-01	F.70	
	V1 500cc OHV Comp. Trials	1954-55	S.467/3/L*	S.467/7/L*		52091/25	31 9"				F.70	
	V1 500cc OHV Comp. Trials (14.00 x 15 Tyres)	1955	S.659/L	S.659/K/L		52091/25	31 9"				F.70	
	V1 500cc OHV Comp. Trials	1956-58	S.659/L	S.659/K/L		53395	41 9"				F.70	
	V1 500cc OHV Twin	1954-55	S.467/3/L*	S.467/7/L*		52091/25	31 9"				F.70	
	V1 500cc OHV Twin RRP	1954-55	S.467/3/L*	S.467/7/L*		52091/25	31 7"				F.70	
	V1 500cc Twin OHV											
	V1 500cc Twin OHV Fieldmaster	1956-57	S.467/195	S.467/199		52091/5	31 7"				F.70	
	V1 600cc SV	1954-55	S.467/3/L*	S.467/7/L*		52091/25	31 3"				F.70	
	V1 600cc SV	1956-58	S.467/195	S.467/199		52091/5	31 7"				F.70	
	V1 650cc OHV Parallel Twin	1954	S.467/3/L*	S.467/7/L*		52091/25	31 7"				F.70	
	V1 650cc OHV Huntmaster	1955	S.467/3/L*	S.467/7/L*		52091/25	31 7"				F.70	
V1 650cc OHV Huntmaster												
V1 650cc OHV Huntmaster												
V1 1000cc Square Four OHV	1956-58	S.467/195	S.467/199		52091/5	31 7"				F.70		
V1 1000cc Square Four OHV	1954-55	S.467/3/L*	S.467/7/L*		52091/25	31 11"				F.70		
V1 1000cc Square Four OHV	1956-58	S.467/195	S.467/199		52091/5	31 11"				F.70		
BOND-MINICAR	Mark C	1954-57	42873/83	42873/84		52091/26	81 6"				F.50	
	Mark C	1958	SN.3102/37	SN.3102/42		52091/26	81 6"				F.50	
	Mini-Truck	1954-57	42873/83	42873/84		52091/26	81 6"				F.50	
	Mini-Truck	1958	SN.3102/37	SN.3102/42		52091/26	81 6"				F.50	
	Mini-Van	1954	42873/83	42873/84		52091/26	81 6"				F.50	
	Family Model	1955-57	42873/83	42873/84		52091/26	81 6"				F.50	
	Family Model	1958	SN.3102/37	SN.3102/42		52091/26	81 6"				F.50	
	Mark E	1958	SN.4302/00			DF.1111/00	81 6"				F.50	
	FOUR	Auto-Roadster 98cc	1954	S.532/L	S.532/K/L		52091/5	21 2"		6933/1	2553/2	F.70
		Lightweight 98cc	1954	S.531/L	S.531/K/L		53395	21 2"			7642/1	F.70
		T.T. De Luxe 122cc	1954	S.531/L	S.531/K/L		52091/5	41 1 1/2"		25246	7642/1	F.70
HROCKHOUSE	Indian Brave 248cc	1954	S.467/1/L*	S.467/5/L*		52091/34	21 8"				F.70	
	Indian Brave 248cc	1955	S.467/1/L*	S.467/5/L*		52091/25	21 8"				F.70	
	R & S 248cc	1955	S.467/1/L*	S.467/5/L*		52091/25	21 8"				F.70	
	R & S 248cc	1956-57	S.467/1/L*	S.467/5/L*		52091/34	21 8"				F.70	
B. S. A.	D.1 125cc S.F.	1954-55	S.630/L	S.630/K/L		53395/4	41 8"				F.70	
	D.1 125cc S.F.	1954-58	S.630/L	S.630/K/L		53395/4	41 8"				F.70	
	D.3 150cc S.F.	1954-55	S.630/L	S.630/K/L		53395/4	41 8"				F.70	
	D.3 150cc S.A.F.	1956-57	S.630/L	S.630/K/L		53395/4	41 8"				F.70	
	D.5 175cc	1958	SC.1102/11	SC.1102/12		53395/4	41 8"				F.70	
	C10L 250cc S.V. S.F.	1954-55	S.630/L	S.630/K/L		53395/4	41 8"				F.70	
	C10L 250cc S.A.F.	1956	S.630/L	S.630/K/L		53395	31 1 1/2"				F.70	
	C10L 250cc S.F.	1957	S.630/L	S.630/K/L		53395	31 1 1/2"				F.70	

† For Separate Inner & Outer Flexible Drives See Chart I (Back Cover)
 * For Speedometer with Alternative Speed Range See Chart II (Back Cover)
 ** 3 Earth-Point Version
 †† Optional Equipment
 *** Recommendation on file according to time - fuel etc.

This scan is explicit for non-commercial use and is not intended for financial or material gain by anyone

Make	Model & Description	Year	Speedometer		Rev Indicator	Flexible Drive		Gear Box	Gear Box Finish	Gear Ring	Speedometer Bracket	K.L.G. Spacing Flays
			Miles	Kilos		Complete	Length					
D.S. Co. (Cont.)	M21 600cc SV S.F. or R.F.	1956-57	S. 608/3/L*	S. 608/7/L*	RG. 83	53395/3	4' 3"	30. 5322/001				FE. 50 FR. 50
	M21 600cc SV S.F. or R.F.	1958	S. 433/3/L*	S. 433/7/L*		53395/4	4' 2"					
	M33 500cc OHV S.F. or R.F.	1954-55	S. 608/3/L*	S. 608/7/L*		53395/3	4' 3"					
	M33 500cc OHV S.F.	1956-57	S. 608/3/L*	S. 608/7/L*		53395/3	4' 2"					
	M33 500cc OHV S.F.	1954-55	S. 608/11/L*	S. 608/15/L*		53395	3' 10 3/4"					
	M33 500cc OHV S.F.	1954-55	S. 608/19/L*	S. 608/23/L*		53395	3' 5"					
	M33 500cc OHV S.F.	1954-55	S. 608/3/L*	S. 608/7/L*		53395	3' 5"					
	M33 500cc OHV S.F.	1954-55	S. 608/29/L*	S. 608/23/L*		53395	3' 5"					
	M33 500cc OHV S.F.	1954-57	S. 608/21/L*	S. 608/15/L*		53395	3' 10 3/4"					
	M33 500cc OHV S.F.	1958	SC. 3305/04	SC. 3305/05		53395	3' 8"					
	M33 500cc OHV S.F.	1958	SC. 3305/06	SC. 3305/07		53395	3' 8"					
	M33 500cc OHV S.F.	1958	SC. 3305/06	SC. 3305/07		53395	3' 8"					
	M33 500cc OHV S.F.	1954-57	S. 608/11/L*	S. 608/15/L*		53395	3' 5"					
	M33 500cc OHV S.F.	1954-57	S. 608/19/L*	S. 608/23/L*		53395	3' 5"					
	M33 500cc OHV S.F.	1954-57	S. 608/11/L*	S. 608/15/L*		53395	3' 10 3/4"					
	M33 500cc OHV S.F.	1954-57	S. 546/3/L*	S. 546/7/L*		53395/4	3' 10 3/4"					
	M33 500cc OHV S.F.	1954-58	SC. 3305/04	SC. 3305/05		52091/5	3' 2"					
	M33 500cc OHV S.F.	1958	SC. 3305/04	SC. 3305/05		53395	3' 8"					
	M33 500cc OHV S.F.	1958	S. 516/3/L*	S. 546/7/L*		53395/4	3' 5"					
	M33 500cc OHV S.F.	1958	SC. 3305/04	SC. 3305/05		53395	3' 8"					
M33 500cc OHV S.F.	1957-58	SA. 281/0/2	SA. 281/1/2	DE. 7302/01	2' 1"							
M33 500cc OHV S.F.	1957-58	SA. 3601/00	SA. 3601/01	DE. 8231/001	2' 8"							
CORGI	Mk. II 98cc	1954-55	S. 532/L	S. 532/K/L	52091/5	3' 5"	70457	70479	70479/1	70479	FE. 70	
	Mk. IV 98cc 2 Speed	1954-55	S. 532/L	S. 532/K/L	52091/5	3' 5"	70457	70479	70479/1	70479	FR. 60	
COTTON	197cc Vulcan 197cc	1955	S. 630/L	S. 630/K/L	52091/5	4' 6"	34159/1	25226	25225/1	25225/1	76412/1	P. 80
	197cc Vulcan 197cc	1956	S. 630/L	S. 630/K/L	52091/5	4' 6"	34159/1	25226	25225/1	25225/1	76412/1	P. 80
	197cc Vulcan 197cc	1957-58	SA. 21/19/2	SA. 21/21/2	52091/5	4' 6"	34159/1	25226	25225/1	25225/1	76412/1	P. 80

† For Separate Inner & Outer Flexible Drives See Chart I (Back Cover)
 * For Speedometer with Alternative Speed Range See Chart II (Back Cover)
 ** 3 Earth-Point Version
 †† Optional Equipment
 *** Recommendation on Request According to Make & Fuel, etc.

This scan is explicit for non-commercial use and is not intended for financial or material gain by anyone

Model	Year	Engine	Displacement	Power	Weight	Dimensions	Options	Price
CORTINA (Cont.)	1970cc	1970cc	S. 630/K/L	52091/5	4' 5"	34199/1	25226	25225
	1956	1956	S. 630/K/L	52091/5	4' 6"	70458/1	25225	25225
	1957-58	1957-58	S. 630/L	52091/5	4' 6"	70458/1	25226	25225
	1958	1958	S. 630/L	52091/5	4' 6"	70458/1	25226	25225
	1957-58	1957-58	S. 630/L	52091/5	4' 6"	70458/1	25226	25225
	1958	1958	S. 630/L	52091/5	4' 6"	70458/1	25226	25225
	1957-58	1957-58	S. 630/L	52091/5	4' 6"	70458/1	25226	25225
	1958	1958	S. 630/L	52091/5	4' 6"	70458/1	25226	25225
	1957-58	1957-58	S. 630/L	52091/5	4' 6"	70458/1	25226	25225
	1958	1958	S. 630/L	52091/5	4' 6"	70458/1	25226	25225
CICLEMAN R	1957-58	1957-58	S. 630/L	53395/29	2' 6"	30637		C.R. 50
	1958	1958	S. 630/L	53395/29	2' 6"	30637		C.R. 50
	1957-58	1957-58	S. 630/L	52091/5	5' 0"			F. 80
	1958	1958	S. 630/L	52091/5	4' 3"			F. 80
	1957-58	1957-58	S. 630/L	52091/5	5' 0"			F. 80
	1958	1958	S. 630/L	52091/5	4' 3"			F. 80
	1957-58	1957-58	S. 630/L	52091/5	5' 0"			F. 80
	1958	1958	S. 630/L	52091/5	4' 3"			F. 80
	1957-58	1957-58	S. 630/L	52091/5	5' 0"			F. 80
	1958	1958	S. 630/L	52091/5	4' 3"			F. 80
D.K.R.	1956-58	1956-58	S. 634/K/L	53395/24	3' 0"	53395/24		F. 70
	1955-57	1955-57	S. 634/K/L	52091/5	4' 11"	25224	25747	70494/1
	1956-57	1956-57	S. 634/K/L	52091/5	4' 11"	25224	25747	70494/1
	1958	1958	S. 634/K/L	52091/5	4' 11"	25224	25226	25225
	1954-55	1954-55	S. 634/K/L	52091/5	4' 6"	70458	25747	70494/1
	1955-57	1955-57	S. 634/K/L	52091/5	4' 11"	25224	25747	70494/1
	1958	1958	S. 634/K/L	52091/5	4' 11"	25224	25747	70494/1
	1954-55	1954-55	S. 634/K/L	52091/5	4' 6"	70458	25747	70494/1
	1955-57	1955-57	S. 634/K/L	52091/5	4' 11"	25224	25747	70494/1
	1958	1958	S. 634/K/L	52091/5	4' 11"	25224	25747	70494/1
D.M.7.	1956-58	1956-58	S. 634/K/L	53395/24	3' 0"	53395/24		F. 70
	1955-57	1955-57	S. 634/K/L	52091/5	4' 11"	25224	25747	70494/1
	1956-57	1956-57	S. 634/K/L	52091/5	4' 11"	25224	25747	70494/1
	1958	1958	S. 634/K/L	52091/5	4' 11"	25224	25226	25225
	1954-55	1954-55	S. 634/K/L	52091/5	4' 6"	70458	25747	70494/1
	1955-57	1955-57	S. 634/K/L	52091/5	4' 11"	25224	25747	70494/1
	1958	1958	S. 634/K/L	52091/5	4' 11"	25224	25747	70494/1
	1954-55	1954-55	S. 634/K/L	52091/5	4' 6"	70458	25747	70494/1
	1955-57	1955-57	S. 634/K/L	52091/5	4' 11"	25224	25747	70494/1
	1958	1958	S. 634/K/L	52091/5	4' 11"	25224	25747	70494/1
DOL	1954-55	1954-55	S. 467/57/L*	52091/5	3' 2"	52091/5		F. 80
	1956-57	1956-57	S. 467/57/L*	52091/5	3' 2"	52091/5		F. 80
	1958	1958	S. 467/57/L*	52091/5	3' 2"	52091/5		F. 80
	1954-55	1954-55	S. 467/57/L*	52091/5	3' 2"	52091/5		F. 80
	1956-57	1956-57	S. 467/57/L*	52091/5	3' 2"	52091/5		F. 80
	1958	1958	S. 467/57/L*	52091/5	3' 2"	52091/5		F. 80
	1954-55	1954-55	S. 467/57/L*	52091/5	3' 2"	52091/5		F. 80
	1956-57	1956-57	S. 467/57/L*	52091/5	3' 2"	52091/5		F. 80
	1958	1958	S. 467/57/L*	52091/5	3' 2"	52091/5		F. 80
	1954-55	1954-55	S. 467/57/L*	52091/5	3' 2"	52091/5		F. 80

† For Separate Inner & Outer Flexible Drives See Chart I (Back Cover)
 * For Speedometer with Alternative Speed Gauge See Chart II (Back Cover)
 ** 3 Earth-Point Version
 †† Optional Equipment
 *** Recommendation on Request According to Type of Fuel etc.

This scan is explicit for non-commercial use and is not intended for financial or material gain by anyone

Make	Model & Description	Year	Sprocket		Rev. Indicator	Flexible Drive†		Gear Ratio	Gear Case	Gear Housing	Gear Housing	Sprocket	K.L.S. Designation
			Miles	Kilos		Gov/Case	Rev/Sha						
DUCATI (Cont.)	TH 197cc Trials Special	Feb 1956-1956	S.634/L	S.634/K/L		52091/25	4"5"	70450	34140	25225		***	
	TH 197cc Scrambler	1954-1956	S.634/L	S.634/K/L		52091/25	4"3"	70450	34140	25225		***	
	TH 197cc Scrambler	Feb 1956-1958	S.634/L	S.634/K/L		52091/25	4"5"	70458	34140	25225		***	
	SEH 197cc Scrambler	1954-Jan 1956	S.634/L	S.634/K/L		52091/25	4"3"	70458	34140	25225		***	
	SEH 197cc Scrambler	Feb 1956-1958	S.634/L	S.634/K/L		52091/25	4"5"	70458	34140	25225		***	
	TH 197cc Trials	1955-1956	S.634/L	S.634/K/L		52091/25	4"3"	70458	34140	25225		***	
	TH 197cc Trials	Jan 1956-Feb 1956	S.634/L	S.634/K/L		52091/25	4"5"	70458	34140	25225		***	
	TH 197cc Trials	-1956-1955-	S.634/L	S.634/K/L		52091/25	4"3"	70458	34140	25225		***	
	TH 197cc Trials	Jan 1956-Feb 1956	S.634/L	S.634/K/L		52091/25	4"5"	70458	34140	25225		***	
	Manurian Roadster 197cc 4 Sp.	1956-58	S.461/709			52091/5	3"3"				25578/1		***
	197cc Comp. Model	1957-58	S.614	S.614/K		52091/5	3"3"						***
	DOUGLAS	Vespa 125cc Scooter	1954-55	S.480/214/2	S.480/5/L*		52091/34	3"3"	34140/2				P.70
Mk.V 348cc OHV		-1954-55	S.480/1/L*	S.480/5/L*		53395/1	4"6"	52283/64/L				P.70	
Plus 80 348cc OHV		1954	S.480/3/L*	S.480/7/L*		53395/1	4"6"	52283/64/L				P.70	
Plus 90 348cc OHV		1954	S.480/5/L*	S.480/7/L*		53395/1	4"6"	52283/64/L				P.70	
Plus 90 348cc OHV		1954	S.480/5/L*	S.480/7/L*	AG.103	52091/5	1"10"	70519/2				P.70	
Competition Model 528cc OHV		1954	S.480/2/L*	S.480/5/L*		53395/1	4"6"	52283/64/L				P.70	
Dragonfly 390cc OHV		1955-57	S.467/111/L*	S.467/181/L*		53395/1	5"2"	52283/64/L			25578/1		P.50
Whippet 60cc		1958	S.5110/26			52091/5	2"2"	86-5322/02-					P.50
EXCELSIOR		S1 98cc Autocyte De Luxe	1951-55	S.532/L	S.532/K/L		52091/5	1"85"	52160/1		6933/1		P.70
		S1 98cc Autocyte De Luxe	1956	S.531/L	S.531/K/L		53395	1"11 1/2"	70484		6933/1		P.70
		S2 98cc Autocyte Super	1954-55	S.532/L	S.532/K/L		52091/5	1"85"	52160/1		6933/1		P.70
		S2 98cc Autocyte Super	1956	S.531/L	S.531/K/L		53395	1"11 1/2"	70484				P.70
	S4 98cc Consort	1954-55	S.531/L	S.531/K/L		53395	1"9 1/2"	70484				P.70	
	S4 98cc Consort	1956	S.531/L	S.531/K/L		53395	1"9 1/2"	70484				P.70	
	S4 98cc Consort	1957	S.531/L	S.531/K/L		53395	2"9"	52283/62/L				P.70	
	S4S 98cc Consort Springer	1956	S.531/L	S.531/K/L		53395	3"9"	52283/62/L				P.70	
	S6S 98cc Consort	1957-58	S.531/L	S.531/K/L		53395	3"9"	52283/62/L				P.70	
	S31 98cc Sbutabyk	1957-58	S.531/L	S.531/K/L		53395	3"9"	52283/62/L				P.70	
	S4S 98cc Consort	1958	S.531/L	S.531/K/L		53395	3"9"	52283/62/L				P.70	
	U1 122cc Universal	1954	S.536/L	S.536/K/L		52091/5	4"48"	70450/1		25747	70450/1	P.70	
U2 122cc Universal	1954	S.536/L	S.536/K/L		52091/5	4"48"	70450/1		25747	70450/1	P.70		
U12 129cc Concord	1954	S.531/L	S.531/K/L		53395	1"9 1/2"	70484/1				P.70		
U3 147cc Universal	1956	S.634/L	S.634/K/L		53395	4"5 1/2"	52283/62/L				P.70		

† For Separate Inner & Outer Flexible Drives See Chart I (Back Cover)
 * For Sprocket with Alternative Speed Range See Chart II (Back Cover)
 ** 3 Earth-Point Version
 ‡ Optional Equipment
 *** Recommendation or Request According to Type & Model, etc.

This scan is explicit for non-commercial use and is not intended for financial or material gain by anyone

ENGINE/STOR (Cont.)	Year	Model	Engine	Displacement	Power	Weight	Dimensions	Notes
01 150cc Courier	1954	S.534/L	534	150	10.5	31.4"	3636/4	FE.70D
02 150cc Courier	1956	S.534/L	534	150	10.5	31.4"	3636/4	P.70
03 150cc Courier	1954	S.534/L	534	150	10.5	31.4"	3636/4	FE.70D
04 150cc Courier	1956	S.534/L	534	150	10.5	31.4"	3636/4	FE.70D
05 150cc Courier	1954	S.534/L	534	150	10.5	31.4"	3636/4	FE.70D
06 150cc Courier	1956	S.534/L	534	150	10.5	31.4"	3636/4	FE.70D
07 150cc Courier	1954	S.534/L	534	150	10.5	31.4"	3636/4	FE.70D
08 150cc Courier	1956	S.534/L	534	150	10.5	31.4"	3636/4	FE.70D
09 150cc Courier	1954	S.534/L	534	150	10.5	31.4"	3636/4	FE.70D
10 150cc Courier	1956	S.534/L	534	150	10.5	31.4"	3636/4	FE.70D
11 150cc Courier	1954	S.534/L	534	150	10.5	31.4"	3636/4	FE.70D
12 150cc Courier	1956	S.534/L	534	150	10.5	31.4"	3636/4	FE.70D
13 150cc Courier	1954	S.534/L	534	150	10.5	31.4"	3636/4	FE.70D
14 150cc Courier	1956	S.534/L	534	150	10.5	31.4"	3636/4	FE.70D
15 150cc Courier	1954	S.534/L	534	150	10.5	31.4"	3636/4	FE.70D
16 150cc Courier	1956	S.534/L	534	150	10.5	31.4"	3636/4	FE.70D
17 150cc Courier	1954	S.534/L	534	150	10.5	31.4"	3636/4	FE.70D
18 150cc Courier	1956	S.534/L	534	150	10.5	31.4"	3636/4	FE.70D
19 150cc Courier	1954	S.534/L	534	150	10.5	31.4"	3636/4	FE.70D
20 150cc Courier	1956	S.534/L	534	150	10.5	31.4"	3636/4	FE.70D
21 150cc Courier	1954	S.534/L	534	150	10.5	31.4"	3636/4	FE.70D
22 150cc Courier	1956	S.534/L	534	150	10.5	31.4"	3636/4	FE.70D
23 150cc Courier	1954	S.534/L	534	150	10.5	31.4"	3636/4	FE.70D
24 150cc Courier	1956	S.534/L	534	150	10.5	31.4"	3636/4	FE.70D
25 150cc Courier	1954	S.534/L	534	150	10.5	31.4"	3636/4	FE.70D
26 150cc Courier	1956	S.534/L	534	150	10.5	31.4"	3636/4	FE.70D
27 150cc Courier	1954	S.534/L	534	150	10.5	31.4"	3636/4	FE.70D
28 150cc Courier	1956	S.534/L	534	150	10.5	31.4"	3636/4	FE.70D
29 150cc Courier	1954	S.534/L	534	150	10.5	31.4"	3636/4	FE.70D
30 150cc Courier	1956	S.534/L	534	150	10.5	31.4"	3636/4	FE.70D
31 150cc Courier	1954	S.534/L	534	150	10.5	31.4"	3636/4	FE.70D
32 150cc Courier	1956	S.534/L	534	150	10.5	31.4"	3636/4	FE.70D
33 150cc Courier	1954	S.534/L	534	150	10.5	31.4"	3636/4	FE.70D
34 150cc Courier	1956	S.534/L	534	150	10.5	31.4"	3636/4	FE.70D
35 150cc Courier	1954	S.534/L	534	150	10.5	31.4"	3636/4	FE.70D
36 150cc Courier	1956	S.534/L	534	150	10.5	31.4"	3636/4	FE.70D
37 150cc Courier	1954	S.534/L	534	150	10.5	31.4"	3636/4	FE.70D
38 150cc Courier	1956	S.534/L	534	150	10.5	31.4"	3636/4	FE.70D
39 150cc Courier	1954	S.534/L	534	150	10.5	31.4"	3636/4	FE.70D
40 150cc Courier	1956	S.534/L	534	150	10.5	31.4"	3636/4	FE.70D
41 150cc Courier	1954	S.534/L	534	150	10.5	31.4"	3636/4	FE.70D
42 150cc Courier	1956	S.534/L	534	150	10.5	31.4"	3636/4	FE.70D
43 150cc Courier	1954	S.534/L	534	150	10.5	31.4"	3636/4	FE.70D
44 150cc Courier	1956	S.534/L	534	150	10.5	31.4"	3636/4	FE.70D
45 150cc Courier	1954	S.534/L	534	150	10.5	31.4"	3636/4	FE.70D
46 150cc Courier	1956	S.534/L	534	150	10.5	31.4"	3636/4	FE.70D
47 150cc Courier	1954	S.534/L	534	150	10.5	31.4"	3636/4	FE.70D
48 150cc Courier	1956	S.534/L	534	150	10.5	31.4"	3636/4	FE.70D
49 150cc Courier	1954	S.534/L	534	150	10.5	31.4"	3636/4	FE.70D
50 150cc Courier	1956	S.534/L	534	150	10.5	31.4"	3636/4	FE.70D
51 150cc Courier	1954	S.534/L	534	150	10.5	31.4"	3636/4	FE.70D
52 150cc Courier	1956	S.534/L	534	150	10.5	31.4"	3636/4	FE.70D
53 150cc Courier	1954	S.534/L	534	150	10.5	31.4"	3636/4	FE.70D
54 150cc Courier	1956	S.534/L	534	150	10.5	31.4"	3636/4	FE.70D
55 150cc Courier	1954	S.534/L	534	150	10.5	31.4"	3636/4	FE.70D
56 150cc Courier	1956	S.534/L	534	150	10.5	31.4"	3636/4	FE.70D
57 150cc Courier	1954	S.534/L	534	150	10.5	31.4"	3636/4	FE.70D
58 150cc Courier	1956	S.534/L	534	150	10.5	31.4"	3636/4	FE.70D
59 150cc Courier	1954	S.534/L	534	150	10.5	31.4"	3636/4	FE.70D
60 150cc Courier	1956	S.534/L	534	150	10.5	31.4"	3636/4	FE.70D
61 150cc Courier	1954	S.534/L	534	150	10.5	31.4"	3636/4	FE.70D
62 150cc Courier	1956	S.534/L	534	150	10.5	31.4"	3636/4	FE.70D
63 150cc Courier	1954	S.534/L	534	150	10.5	31.4"	3636/4	FE.70D
64 150cc Courier	1956	S.534/L	534	150	10.5	31.4"	3636/4	FE.70D
65 150cc Courier	1954	S.534/L	534	150	10.5	31.4"	3636/4	FE.70D
66 150cc Courier	1956	S.534/L	534	150	10.5	31.4"	3636/4	FE.70D
67 150cc Courier	1954	S.534/L	534	150	10.5	31.4"	3636/4	FE.70D
68 150cc Courier	1956	S.534/L	534	150	10.5	31.4"	3636/4	FE.70D
69 150cc Courier	1954	S.534/L	534	150	10.5	31.4"	3636/4	FE.70D
70 150cc Courier	1956	S.534/L	534	150	10.5	31.4"	3636/4	FE.70D
71 150cc Courier	1954	S.534/L	534	150	10.5	31.4"	3636/4	FE.70D
72 150cc Courier	1956	S.534/L	534	150	10.5	31.4"	3636/4	FE.70D
73 150cc Courier	1954	S.534/L	534	150	10.5	31.4"	3636/4	FE.70D
74 150cc Courier	1956	S.534/L	534	150	10.5	31.4"	3636/4	FE.70D

† For Separate Inner & Outer Flexible Drives See Chart I (Back Cover)
 * For Speedometer with Alternative Speed Range See Chart II (Back Cover)
 ** 3 Earth-Point Version
 ‡ Optional Equipment
 \$\$\$ See condition on Request Amendment to Part # due to...

This scan is explicit for non-commercial use and is not intended for financial or material gain by anyone

GR K&E (cont.)	250 242cc Fleetswing De Luxe Twin	S. 533/L	S. 639/K/L	52091/25	4'8"	34157	25247	25225		P. 70
	25R 242cc Standard Twin	S. 633/L	S. 633/K/L	52091/25	4'10"	34129	25225	25225	31-514-103-02	P. 70
	320 322cc Fleetsmaster De Luxe Twin	S. 433/L/L*	S. 433/K/L*	52091/25	4'10"	34159	25225	34159	36.5/1	P. 70
	320 322cc Fleetsmaster De Luxe Twin	S. 661/L	S. 661/K/L	52091/25	4'10"	34159	25225	21081		P. 70
H. J. H.	Dragon 197cc Dragon 197cc R.F. (2.75 x 19 Tyres)	80421/28/2		52091/5	4'8"	70458	25226	25225		P. 80
	Dragonette 150cc R.F. (2.75 x 19 Tyres)	80421/19/2	80421/21/2	52091/5	4'8"	70458	25226	25225		P. 80
	SSD 197cc Super Sports De Luxe S.A.S. (3.00x 19 Tyres)	80421/19/2	80421/21/2	52091/5	4'8"	70458	25226	25225		P. 70
	1955	S. 467/20/L*	S. 467/205/L*	52091/5	4'8"	70458	25226	25225	25518/1	P. 80
HARPER	Scoutmobile 197cc	80421/28/2		52091/32	2'4"	34159	52239	70503		P. 80
	Scoutmobile 197cc	80421/28/2		52091/32	2'4"	52160/5		31-812		P. 80
E. B. ENGINEERING	Phoenix Scooter 150cc	80420/7/2	80420/9/2	53395/24	5'1"	52283/84/1				P. 70
T. DAN	Pire Arrow 250cc	S. 634/L		53395/1	4'6"	52283/6				
	Pire Arrow 250cc	S. 662/L		53395/1	4'6"	52283/6			31-674-141-01	
	Pire Arrow 250cc	S. 662/L		53395/4	4'6"	52283/6			31-674-144-01	
	Pire Arrow (Hounds) 250cc									
	OHV. Sports	S. 662/L	S. 467/63/L*	53395/4	4'6"	52283/6				
	Woodman 500cc Scrambles	S. 491/3/L*		53395/1	4'6"	52283/6				
	Woodman 500cc Scrambles			53395/1	4'6"	EG. 5110/00				
	Woodman 500cc Scrambles			53395/1	4'6"	EG. 5110/00				
	Woodman 500cc Scrambles			53395/4	4'6"	EG. 5110/00				
	Woodman 500cc Scrambles			53395/4	4'6"	EG. 5110/00				
	West Coast Woodman 500cc			52091/5	2'4"	70549				
	West Coast Woodman 500cc	S. 491/3/L*	S. 491/1/L*	53395/4	4'6"	52283/6				
	OHV.			52091/5	2'4"	70549				
	Tomahawk 500cc Twin	S. 467/59/L*		53395/1	4'6"	52283/6				
	Tomahawk 500cc Twin	S. 467/59/L*	S. 467/63/L*	53395/1	4'6"	52283/6				
	Tomahawk 500cc Twin			53395/4	4'6"	52283/6				
	Prairie Trail Blazer 700cc Twin			52091/5	3'7"	70549/1				
	Prairie Trail Blazer 700cc Twin			53395/1	4'6"	52283/160/1				P. 100
	Trail Blazer 700cc OHV. Twin			53395/1	4'6"	EG. 5110/00				P. 100
	Trail Blazer 700cc OHV. Twin			53395/4	4'9"	EG. 5110/00				P. 100
	Apache 700cc OHV. Twin Sports			52091/5	3'1"	70549/1				P. 100
		80.3303/01	80.3303/11	53395/4	4'6"	52283/6				P. 100

† For Separate Inner & Outer Flexible Drives See Chart I (Jack Cover)
 * For Speedometer with Alternative Speed Range See Chart II (Jack Cover)
 ** 3 Earth-Point Version
 ‡ Optional Equipment
 *** Recommendation on Request According to Page 3 Wheel etc.

This scan is explicit for non-commercial use and is not intended for financial or material gain by anyone

Make	Model & Description	Year	Speedometer		Key Indication	Flexible Drive # Complete	Length	Case Box Partion	Case dialing	Speedometer Bracket	K.L.G. Spreading Plugs
			Miles	K/Hrs							
LUDIAH (Cont.)	Apache 700cc CIV. Twin Sports	1951-53			EC-134	52091/5	3"7"	70348/1			F-100
	3 Wheeler Inverlid Carriage	1957-58	S-547/L	S-647/K/L		DF-1111/00	8"0"	52160/1	52219		P-80
ISSETTA	R.H.S. Model	1957	SN-3119/00	SN-5119/01		DF-1104/00	8"0"	BG-2406/00			P-80
	L.H.S. Model	1957	SN-3119/02	SN-5119/03		DF-1104/00	7"0"	BG-2406/00			P-80
	R.H.S. Model	1958	SN-3119/00	SN-5119/01		DF-1104/00	8"0"	BG-2406/00			P-80
	L.F.S. Model	1953	SN-3119/00	SN-5119/01		DF-1104/00	7"0"	BG-2406/00			P-80
	J-11 98cc 4 ¹ / ₂ Comet	1954	S-531/L	S-531/K/L		53395	4"8"	52283/62/1		55287	F-70
	L-1 98cc 4 ¹ / ₂ Comet	1956	S-532/L	S-531/K/L		53395/4	4"8"	BG-5100/226		53287	F-70
	L-1 98cc 4 ¹ / ₂ Comet	1957	80421/25/2	80421/26/2		53395	4"7"	BG-5100/227			F-70
	L-1 98cc 4 ¹ / ₂ Comet	1958	80421/25/2	80421/26/2		53395	4"7"	BG-5100/227			F-70
	J-5 122cc 130 Cadet	1954	S-532/L	S-531/K/L		53395	4"8"	52283/62/1			F-70
	J-15 150cc 300 Cadet	1955	80421/19/2	80421/21/2		53395/4	4"8"	BG-5100/226			F-70
	L-15 150cc 300 Cadet	1956	80421/25/2	80421/26/2		53395	4"8"	52283/62/1			F-70
	L-15 150cc 300 Cadet	1957	80421/25/2	80421/26/2		53395	4"7"	BG-5100/227			F-70
	L-15 150cc 300 Cadet	1958	80421/25/2	80421/26/2		53395	4"7"	BG-5100/227			F-70
	L-17 175cc	1957	80421/25/2	80421/26/2		53395	4"7"	BG-5100/227			F-70
	L-17 175cc	1958	80421/25/2	80421/26/2		53395	4"7"	BG-5100/227			F-70
	K-17 175cc 7E Comando Comp	1958	S-611/L	S-611/K/L		53395	4"4"	BG-5330/227			P-80
	J-9 197cc 7E Comando Comp	1954	S-538/L	S-538/K/L		52081/25	4"0"	70458		25285/2	P-80
	J-9 197cc 7E Comando Comp	1955	S-611/L	S-611/K/L		53395/4	4"0"	52283/62/1			P-80
K-7 197cc 7E Comando Comp	1956	S-611/L	S-611/K/L		53395/4	4"4"	BG-5100/226			P-80	
K-7 197cc 7E Comando Comp	1957	S-611/L	S-611/K/L		53395	4"7"	BG-5100/227			P-80	
K-7 197cc 8E Captain	1954	S-538/L	S-538/K/L		53395/4	4"4"	52283/62/1			P-80	
K-7 197cc 8E Captain	1955	80421/19/2	80421/21/2		53395/4	4"4"	52283/62/1			P-80	
K-7 197cc 8E Captain	1956	80421/25/2	80421/26/2		53395/4	4"4"	BG-5100/226			P-80	
K-7 197cc 8E Captain	1957	80421/25/2	80421/26/2		53395	4"7"	BG-5100/227			P-80	
K-7 197cc 8E Captain	1958	80421/25/2	80421/26/2		53395	4"7"	BG-5100/227			P-80	
K-7 197cc 7E Cotswold	1954-55	S-611/L	S-611/K/L		53395/4	4"4"	52283/62/1			P-80	
K-7 197cc 7E Cotswold	1956	S-611/L	S-611/K/L		53395/4	4"4"	BG-5100/226			P-80	
K-12 225cc 1H Colonel	1954-55	S-467/25/L	S-467/29/L		52091/25	3"0"				P-80	
K-12 225cc 1H Colonel	1956	80421/25/2	80421/26/2		52091/25	3"0"				P-80	
L-25 250cc 250 Commodore	1957	80421/25/2	80421/26/2		52091/25	4"7"	BG-5100/227			PE-70	
L-25 250cc 250 Commodore	1958	80421/25/2	80421/26/2		52091/25	4"7"	BG-5330/227			PE-70	
LAMBRETTA	D	1954	80420/7/2	80420/9/2		53395/24	5"0"	80625			P-80**
	TD	Jan-May 1954	80420/7/2	80420/9/2		53395/24	5"0"	80625			P-80**
	TD	Aug 1954- Feb 1955	80420/7/2	80420/9/2		53395/24	5"1"	80625			P-80**

† For Separate Inner & Outer Flexible Drives See Chart I (Back Cover)
 * For Speedometer with Alternative Speed Range See Chart II (Back Cover)
 ** 3 Earth-Point Version

† Optional Equipment
 *** Recalculation on Request According to Case #, Dial etc.

Model	From Mar	80421/19/2 80420/7/2	80421/21/2 80420/9/2	53395/24 53395/24	5'11" 5'3"	80625 80625	25578/1	FE.80** F.80**
LAMBERTIA (Cont.)								
MATCHLESS								
ID	From Mar	80421/19/2 80420/7/2	80421/21/2 80420/9/2	53395/24 53395/24	5'11" 5'3"	80625 80625	25578/1	FE.80** F.80**
ID De Luxe	1955 1955							
G3L 350cc OHV, Single	1954	S.433/1/1*	S.433/5/L*	53395/1	4'6"	52283/66/1	25578/1	FE.80**
G3L 350cc OHV, Single	1955	S.467/157*	S.467/157*	53395/1	5'5"	52283/66/1		FE.80**
G3LD 350cc OHV, Comp	1954-56	S.491/3/L*	S.491/7/L*	53395/1	4'6"	52283/66/1		FE.80**
G3LD 350cc OHV, Comp	1957-58	S.491/3/L*	S.491/7/L*	53395/1	5'5"	52283/66/1		FE.80**
G3LD 350cc OHV, Comp	1954-58	S.491/3/L*	S.491/7/L*	53395/1	5'5"	52283/66/1		FE.80**
G3LGS 350cc OHV, Scrambler								
Single	1958		RC.95/1	52091/5	2'6 3/4"	70549/1		FE.80**
G3LS 350cc OHV, Single	1954	S.433/1/1*	S.433/5/L*	53395/1	5'5"	52283/66/1		FE.80**
G3LS 350cc OHV, Single	1955	S.467/157*	S.467/157*	53395/1	5'5"	52283/66/1		FE.80**
G3LS 350cc OHV, Single	1956-58	S.467/163*	S.467/167*	53395/1	5'5"	52283/66/1		FE.80**
G9 500cc Twin	1954	S.433/1/1*	S.433/5/L*	53395/1	5'5"	52283/66/1		FE.80**
G9 500cc Twin	1955-58	S.467/167*	S.467/167*	53395/1	2'12"	70549/1		FE.80**
G9 500cc Twin	1955-58	S.467/167*	S.467/167*	53395/1	5'5"	52283/66/1		FE.80**
G9 500cc Twin	1955-58	S.467/167*	S.467/167*	53395/1	2'2 1/2"	70549/1		FE.80**
G11 600cc OHV, Twin S.P.	1956-58	S.467/163*	S.467/167*	53395/1	5'5"	52283/66/1		FE.80**
G11 600cc OHV, Touring								
Twin	1958		RC.95/1	52091/5	2'2 1/2"	70549/1		FE.80**
G1LGS 600cc OHV, Scrambler								
Twin	1958	S.491/3/L*	S.491/7/L*	53395/1	5'5"	52283/66/1		FE.80**
G1LGS 600cc OHV, Scrambler								
Twin	1958		ARC.95/1	52091/5	2'2 1/2"	70549/1		FE.80**
G12 650cc OHV, Touring	1958	S.467/163*	S.467/167*	53395/1	5'5"	52283/66/1		FE.80**
G12 650cc OHV, Touring								
Twin	1958		ARC.95/1	52091/5	2'2 1/2"	70549/1		FE.80**
G12GS 650cc OHV, Scrambler								
Twin	1958	S.491/3/L*	S.491/7/L*	53395/1	5'5"	52283/66/1		FE.80**
G12GS 650cc OHV, Scrambler								
Twin	1958		ARC.95/1	52091/5	2'2 1/2"	70549/1		FE.80**
G4.5 Racing Twin	1954-56			52091/5	1'8 3/4"	70521		***
G4.5 Racing Twin	From Mar 1956			52091/5	1'8 3/4"	70521		***
G4.5 Racing Twin	1956			52091/5	1'8 3/4"	70521/10		***
G4.5 Racing Twin	1957			52091/5	2'0"	70521/10		***
G80 500cc OHV, Single	1954	S.433/1/1*	S.433/5/L*	53395/1	4'6"	52283/66/1		FE.80**
G80 500cc OHV, Single	1955	S.467/163*	S.467/167*	53395/1	5'5"	52283/66/1		FE.80**
G800 500cc OHV, Comp	1954-55	S.491/3/L*	S.491/7/L*	53395/1	4'6"	52283/66/1		FE.80**
G800S 500cc OHV, Comp	1954-58	S.491/3/L*	S.491/7/L*	53395/1	5'5"	52283/66/1		FE.80**
G800S 500cc OHV, Scrambler								
Single	1958		RC.95/1	52091/5	2'6 3/4"	70549/1		FE.80**
G80S 500cc OHV, Single	1954	S.433/1/1*	S.433/5/L*	53395/1	5'5"	52283/66/1		FE.80**
G80S 500cc OHV, Single	1955-58	S.467/163*	S.467/167*	53395/1	5'5"	52283/66/1		FE.80**
MEADOWS								
Frisky	1958	SN.3103/64		DF.1111/02	10'0"			F.80
NEW HUDSON								
Autocycle 98cc	1954-56	S.532/L	S.532/K/L	52091/5	2'2"	52160/1	25533/2	F.70

† For Separate Inner & Outer Flexible Drives See Chart I (Back Cover)
 * For Speedometer with Alternative Speed Rangs See Chart II (Back Cover)
 ** J Earth-Point Version
 † Optional Equipment
 *** Recommendation on Request According to Tune & Fuel etc.

This scan is explicit for non-commercial use and is not intended for financial or material gain by anyone

Make	Model & Description	Year	Speedometer		Key Indicator	Flexible Drive†		Gear Box	Gear Box Location	Gear Ring	Speedometer Bracket	I. L. G. Sparking Flugs
			Miles	Kilos		Complete	Length					
H. S. J.	Fox Quickley 4Sec	1955	80421/5/2	80421/1/2		Complete	21 7"	70459/2				P. 100
		1955	80411/0/2				21 4"	80642/1				P. 80
FOREAN	C 98cc Auto-cycle	1954-57	S. 551/2	S. 551/K/L			21 4"	70484			25533/2	P. 70
	D 98cc Motor Cycle	1954-55	S. 552/2	S. 552/K/L			21 4"	70484			31-61L-109-01	P. 70
	E 122cc S.F.	1954	S. 617/2	S. 617/K/L			4 10"	25224	70494/1		25533/3	P. 70
	F 122cc S.F.	1954	S. 552/L	S. 552/K/L			2 4"	70484			31-61L-109-01	P. 70
	B. 122cc R.F.	1954	S. 617/L	S. 617/K/L			4 10"	25224	70494/1		25533/3	P. 70
	D. 122cc R.F. Journal	1954	S. 617/L	S. 617/K/L			4 10"	25224	70494/1		25533/3	P. 70
	Race Hubs	1954	80421/27/2	80421/28/2			4 10"	25224	70494/1		25533/3	P. 70
	BIS 150cc S.F.	1955-56	80421/27/2	80421/28/2			4 10"	25224	70494/1		25533/3	P. 70
	SIS 150cc S.F. Villiers	1957	80421/27/2	80421/28/2			4 10"	25224	70494/1		25533/3	P. 70
	SAS 150cc S.F. Villiers	1957	80421/56/2	80421/57/2			3 10"					P. 80
	SIS 150cc S.F. Villiers	1958	80421/56/2	80421/57/2			2 9"				25533/3	P. 80
	31c	1954	S. 617/L	S. 617/K/L			4 10"	25224	70494/1		25533/3	P. 80
	B2 197cc R.F.	1954	S. 617/L	S. 617/K/L			4 10"	25224	70494/1		25533/3	P. 80
	B2 197cc R.F. Journal	1954	S. 617/L	S. 617/K/L			4 10"	25224	70494/1		25533/3	P. 80
	Race Hubs	1954	S. 617/L	S. 617/K/L			4 10"	25224	70494/1		25533/3	P. 80
	B2 197cc S.F.	1955	80421/27/2	80421/28/2			4 10"	25224	70494/1		25533/3	P. 80
	B2 197cc S.F.	1955	80421/27/2	80421/28/2			4 10"	25224	70494/1		25533/3	P. 80
	B2 197cc S.F. 4 SP.	1956-57	80421/40/2	80421/41/2			3 10"	25224	70494/1		25533/3	P. 80
	B2 197cc S.F. 4 SP.	1956	80421/40/2	80421/41/2			2 8 1/2"					P. 80
	B2 197cc S.F. 3 SP.	1956-57	80421/27/2	80421/28/2			4 10"	25224	70494/1		25533/2	P. 80
B2 197cc S.F. 3 SP.	1956	80421/27/2	80421/28/2			3 10"	25224	70494/1		25533/2	P. 80	
B2 197cc Comp.	1955	S. 619/L	S. 619/K/L			4 8"	25224	70494/1		25533/2	P. 80	
B2 197cc Comp. S.F.	1956-57	S. 558/L	S. 558/K/L			3 1/2"	25224	70494/1		25533/2	P. 80	
B2 197cc Comp. S.F.	1956	S. 558/L	S. 558/K/L			2 11"				25533/2	P. 80	
B2 197cc Comp. S.F. Headlamp Fitting	1957	80421/27/2	80421/28/2			3 10"					P. 80	
B2 197cc Comp. S.F.	1958	80421/27/2	80421/28/2			2 11"					P. 80	
B2 242cc S.F. Competition Model	1954	80421/27/2	80421/28/2			4 10"	25224	70494/1		25533/2	P. 80	
			S. 619/L	S. 619/K/L								
MORTON	160.1 596cc SV Big Four	1954	S. 467/1/L*	S. 467/5/L*			4 6"	52283/65/1			25578/1	FE. 70
	162 490cc OIV	1954-55	S. 467/147/L*	S. 467/151/L*			4 6"	52283/65/1			25578/1	FE. 70
	162 490cc OIV	1956-56	S. 467/203	S. 467/207			5 7 1/2"	36.5100/251			25578/1	FE. 50
	160.7 497cc OIV Dominator	1954-55	S. 467/147/L*	S. 467/151/L*			4 6"	52283/65/1			25578/1	P. 70
	161 490cc SV	1954	S. 467/1/L*	S. 467/5/L*			4 6"	52283/65/1			25578/1	FE. 70
	160.16 490cc OIV	1954	S. 467/147/L*	S. 467/151/L*			4 6"	52283/65/1			25578/1	P. 70
	193 596cc OIV	1955	S. 467/147/L*	S. 467/151/L*			4 6"	52283/65/1			25578/1	FE. 70
	193 596cc OIV	1955	S. 467/147/L*	S. 467/151/L*			4 6"	52283/65/1			25578/1	FE. 70
	195 596cc OIV	1956-58	S. 467/203	S. 467/207			5 7 1/2"	36.5100/251			25578/1	FE. 80
	160.30 596cc OIV	1954	S. 467/147/L*	S. 467/151/L*			4 6"	52283/65/1			25578/1	FE. 100
	International											

† For Separate Inner & Outer Flexible Drives See Chart I (Back Cover)
 * For Speedometer with Alternative Speed Range See Chart II (Back Cover)
 ** 3 Earth-Point Version
 ‡ Optional Equipment
 *** Recommendation on Request according to Time & Fuel, etc.

This scan is explicit for non-commercial use and is not intended for financial or material gain by anyone

ROYAL ENFIELD
(Cont.)

250 Clipper 250cc OHV	1953	S.467/241	S.467/245	53395/4	41"	52283/5	P.70
250 Crusader 250cc OHV Standard	1957	S.657	S.657/K	53395/4	41"	52283/6	P.80
250 Crusader 250cc OHV De Luxe	1957	S.467/241	S.467/245	53395/4	41"	52283/6	P.80
250 Crusader 250cc OHV Crusader Air Flow 250cc OHV	1958	S.467/241	S.467/245	53395/4	41"	52283/6	P.80
350 Clipper 350cc OHV (Home Market)	1956	S.467/L	S.467/245	53395/4	41"	52283/6	P.70
350 Clipper 350cc OHV De Luxe	1957	S.467/L	S.467/4/L	53395/4	41"	52283/6	P.70
350 Crusader 350cc OHV G.3/6cc OHV	1958	S.467/59/L*	S.467/63/L*	53395/4	41"	52283/6	P.70
350 Crusader 350cc OHV G.3/6cc OHV (Export Only)	1954	S.467/59/L*	S.467/63/L*	53395/1	41"	52283/6	P.70
350 Bullet Standard 3/6cc OHV Sports (3.25 x 19 Tyres)	1956	S.467/L	S.467/4/L	53395/1	41"	52283/6	P.70
350 Bullet Standard 350cc OHV	1957-58	S.467/59/L*	S.467/63/L*	53395/1	41"	52283/6	P.70
350 Bullet Trials 3/6cc OHV Sports (4.00 x 19 Tyres)	1957-58	S.467/59/L*	S.467/63/L*	53395/4	41"	52283/6	P.70
350 Bullet Trials 3/6cc OHV Sports (4.00 x 19 Tyres)	1954-56	S.467/65/L*	S.467/69/L*	53395/1	41"	52283/6	P.70
350 Bullet Trials 350cc OHV	1956	S.467/65/L*	S.467/69/L*	ARC.83	21"	70549	P.70
350 Bullet Racing 3/6cc OHV	1957-58	S.467/65/L*	S.467/69/L*	53395/4	41"	52283/6	P.70
350 Bullet Racing 3/6cc OHV	1955	S.467/65/L*	S.467/69/L*	52031/5	21"	70549	***
350 Bullet Racing 500cc OHV (L.00x19 Tyres)	1954	S.467/59/L*	S.467/63/L*	53395/1	41"	52283/6	PE.70
350 Bullet Racing 500cc OHV (L.00x19 Tyres)	1955	S.467/59/L*	S.467/63/L*	52031/5	21"	70549	***
350 Bullet Trials 500cc OHV (L.00x19 Tyres)	1954-56	S.467/65/L*	S.467/69/L*	53395/1	41"	52283/6	PE.70
350 Bullet Trials 500cc OHV	1956	S.467/65/L*	S.467/69/L*	ARC.83	41"	52283/6	PE.70
500 Bullet Standard 500cc OHV (3.50 x 19 Tyres)	1957-58	S.467/69/L*	S.467/69/L*	53395/4	41"	52283/6	PE.70
500 Bullet Standard 500cc OHV	1955-56	S.467/59/L*	S.467/63/L*	53395/1	41"	52283/6	PE.70
500 Bullet Standard 500cc OHV	1957-58	S.467/59/L*	S.467/63/L*	53395/4	41"	52283/6	PE.70
500 Bullet Moto-cross 500cc OHV	1957-58	ARC.83	S.491/L*	53395/4	41"	52283/5	***
500 Bullet Moto-cross 500cc OHV	1957	ARC.83	S.491/L*	53395/4	41"	52283/5	***
500 Bullet Moto-cross 500cc OHV	1958	ARC.83	S.491/L*	52031/5	21"	70549	***

† For Separate Inner & Outer Flexible Drives See Chart I (Back Cover)
 * For Speedometer with Alternative Speed Range See Chart II (Back Cover)
 ** 3 Earth-Point Version

‡ Optional Equipment
 *** Recommendation on Request According to Type & Fuel etc.

This scan is explicit for non-commercial use and is not intended for financial or material gain by anyone

Make	Model / Description	Year	Motor		Rev. Indicator	Flexible Drive		Gear Box	Gear Box Label	Gear Ratio	B. Scooter Bracket	A.L.G. Spooling Flays	
			Files	Files		Complete	Length						
ROYAL ENFIELD (Co.)	500 (4V) 500cc CIV	1954-56	S.467/59/L*	S.467/63/L*		53395/1	4.6"	52283/6				P.70	
	500 (4V) 500cc CIV	1957-58	S.467/59/L*	S.467/63/L*		53395/4	4.6"	52283/6				P.70	
	J2 500cc Solo 2; Sidecar Motor 500cc CIV	1957-58	S.467/59/L*	S.467/63/L*		53395/1	4.6"	52283/6				P.70	
	700 Meteor / 700cc Solo	1957-58	S.467/243	S.467/247		53395/4	4.6"	52283/6				P.70	
	700 Meteor / 700cc Solo	1959-60	S.467/59/L*	S.467/63/L*		53395/1	4.6"	52283/6				P.70	
	700 Meteor 700cc with quickly Detachable Rear Wheel	1959	S.467/59/L*	S.467/63/L*		53395/1	4.6"	52283/6				P.70	
	Super Meteor 700cc CIV	1956	S.467/59/L*	S.467/63/L*		53395/4	4.6"	52283/6				P.70	
	Super Meteor 700cc CIV	1957-58	S.467/59/L*	S.467/63/L*		53395/4	4.6"	52283/6				P.70	
	Constellation 700cc CIV	1956	S.C.3303/01	S.C.3303/11	AIG.184	58094/5	2.4"	10549					P.70
	Constellation 700cc CIV	1958				58094/5	2.4"	52283/6				P.70	
	350 Bullet (with Tool)												P.70
	350 Bullet (with Tool)												P.70
500 (4V) Quickly												P.70	
Super Meteor 500cc (Detachable Tool)												P.70	
SAK USA	Harper Invalid Carriage	1956	60421/29/2			52091/5	2.10"	34159	52259	31-312-324		P.60	
	Harper Invalid Carriage	1957-58	60421/29/2			52091/26	3.0"	34159	52259	31-311-508		P.60	
	Harper Invalid Carriage (Aluminum)	1958	S.C.5304/00			52091/26	3.0"			52240		P.60	
	Auto-Cycle 98cc	1954	S.532/L	S.532/L		52091/5	2.1"	52169/1		52533/2		P.70	
	De Luxe 98cc	1954	S.532/L	S.532/L		52091/5	2.1"	52169/1		52220		P.60	
	Storm 98cc	1955-57	S.532/L	S.532/L		52091/5	2.1"	52169/1		52220		P.70	
	Genl 98cc Motor	1957-58	60421/10/2			53395/26	2.1"	2440/4				P.70	
	Challenger 148cc	1955-57	60421/10/2	S.467/247		52091/5	4.6"	25224	25248			P.60	
	Challenger De Luxe 197cc	1954	S.532/L	S.532/L		52091/5	4.6"	25224	25248	16112/1		P.60	
	Challenger De Luxe 197cc	1955-57	60421/10/2	60421/21/2		52091/5	4.6"	25224	25248	25225		P.60	
	Challenger De Luxe 197cc	1954	S.532/L	S.532/L		52091/5	4.6"	25224	25248	25225		P.60	
	Competition 197cc	1954-55	60421/10/2	60421/21/2		52091/5	4.6"	25224	25248	25225		P.60	
Competition 197cc	1956	S.532/L	S.532/L		52091/5	4.6"	25224	25248	25225	76112/1		P.60	
Competition 197cc	1956	S.532/L	S.532/L		52091/5	4.6"	25224	25248	25225	76112/1		P.60	

1. For complete list of other Flexible Drives see Chart I (Back Cover)
 2. For information with Alternative Speed Drive see Chart II (Back Cover)
 3. Harper-Police Version

This scan is explicit for non-commercial use and is not intended for financial or material gain by anyone

Year	Model - Description	Gear Ratio		Rev Indicator	Flexible Drives		Gear Box	Gear Ratio	Sprocket Bracket	K.L.G. Sparking Plugs
		Flies	Kilobits		Complete	Telegrip				
1956	1956 340cc O.V. Viper Out	80:21/35/2	80:21/37/2		53395	4" 1 1/2"	52203/64/3			K. 50
1957-58	1957-58 340cc O.V. Viper Cub	80:21/36/2	80:42/37/2		53395	4" 1 1/2"	52203/64/3			F. 50
1957-58	1957-58 340cc O.V. Viper Cub Comp.	80:21/35/2	80:42/35/2		53395	4" 1 1/2"	52203/64/3			F. 60
1957-58	1957-58 340cc O.V. Viper Cub	S. 467/227	S. 467/231		53395	4" 1 1/2"	52203/66/3			M. 50
Jan-1954	1954 340cc O.V. Viper	S. 467/99/L	S. 467/23/L		53395/18	3" 0"		25578/2		P.L. 100
Feb-Dec 1954	1954 340cc O.V. Viper	S. 467/99/L	S. 467/23/L		53395/23	3" 0"		25578/2		PE. 100
1955-58	1955-58 340cc O.V. Viper	S. 467/99/L	S. 467/23/L		53395/18	3" 0"		25578/2		M.S. 100
1954-55	1954-55 340cc O.V. Viper	S. 467/91/L	S. 467/95/L	40, 126	52091/5	2" 4"		25578/2		***
1954-55	1954-55 340cc O.V. Viper	S. 467/107/L	S. 467/47/L		53395/18	3" 0"		25578/2		****
1956-58	1956-58 340cc O.V. Viper	S. 467/131	S. 467/135		53395/18	3" 0"		25578/2		*****
1954-57	1954-57 340cc O.V. Viper	1287/20	1287/21		52091/34	2" 0"				PE. 70
1957-58	1957-58 340cc O.V. Viper	80:21/19/2	80:21/22/2		52091/34	2" 0"				PE. 70
1957-58	1957-58 340cc O.V. Viper	80:21/19/2	80:21/22/2		52091/34	2" 0"				PE. 70
1957-55	1957-55 340cc O.V. Viper	S. 433/1*	S. 433/5/L*	RC. 50	52091/5	3" 0"	70249			***
1954-55	1954-55 340cc O.V. Viper	S. 433/1*	S. 433/5/L*		53395/1	4" 0"	52203/6			PE. 70
Jan-Feb 1956	1956 340cc O.V. Viper	S. 433/2/L	S. 433/6/L		53395/1	5" 0"	52203/6/3			PE. 70
Mar-1956	1956 340cc O.V. Viper	S. 433/2/L	S. 433/6/L		53395/1	5" 0"	52203/6/3			PE. 70
1957-58	1957-58 340cc O.V. Viper	S. 433/1/L*	S. 433/5/L*		53395/1	5" 0"	52203/6/3			PE. 70
1956-58	1956-58 340cc O.V. Viper	S. 467/23/L	S. 467/12/L		53395/1	5" 0"	52203/6/3		25578/1	PE. 100
1956-58	1956-58 340cc O.V. Viper	S. 467/2/L	S. 467/6/L		53395/1	5" 0"	52203/6/3			PE. 100
1956-55	1956-55 340cc O.V. Viper	S. 433/2/L*	S. 433/5/L*	40, 95	52091/5	3" 0"	70249/20			PE. 100
Jan-Feb 1956	1956 340cc O.V. Viper	S. 433/2/L	S. 433/5/L*	40, 95	52091/5	3" 0"	70249/10			PE. 100
Mar-1956	1956 340cc O.V. Viper	S. 433/2/L	S. 433/5/L*		53395/1	5" 0"	52203/6			PE. 60
1957-58	1957-58 340cc O.V. Viper	S. 467/2/L	S. 467/6/L		53395/1	5" 0"	52203/6/3			PE. 50
1956	1956 340cc O.V. Viper	S. 433/2/L	S. 433/5/L*		53395/1	5" 0"	52203/6/3			PE. 50
1957-58	1957-58 340cc O.V. Viper	S. 467/2/L	S. 467/6/L		53395/1	5" 0"	52203/6/3			PE. 50
1956	1956 340cc O.V. Viper	S. 467/23/L	S. 467/12/L		53395/1	5" 0"	52203/6/3		25578/1	PE. 100
1957-58	1957-58 340cc O.V. Viper	S. 467/2/L	S. 467/6/L		53395/1	5" 0"	52203/6/3			PE. 100
1956-58	1956-58 340cc O.V. Viper	S. 467/2/L	S. 467/6/L	40, 95	52091/5	3" 0"	70249/10			PE. 100
1956-58	1956-58 340cc O.V. Viper	S. 467/2/L	S. 467/6/L	RC. 75	52091/5	3" 0"	70249/10			PE. 100

† For Separate 1. Motor 3. Guron Flexible Drives See Chart II (Fuel Cover)
 * For Sprocket with Alternative Special Range See Chart II (Fuel Cover)
 ** 3 Earth-Point Version
 ‡ Optional Equipment
 *** Recommendation on Request According to Type : Fuel etc.

This scan is explicit for non-commercial use and is not intended for financial or material gain by anyone

VINCENT	1955-56	S.467/3/L*	S.467/1/L*	52091/34	31"	70458/4	25578/1	78.70
Victor 499cc Single	1954	S.433/3/L*	S.433/1/L*	52091/5	21"	25791	25578/3	86.70
Comet Standard 500cc Single	1955-56	S.575/3/L*	S.575/7/L*	52091/5	21 1/2"	25791		87.70
Comet D 499cc Single	1954	S.433/3/L*	S.433/7/L*	52091/5	21"	25791	25578/3	88.70
Rapide Standard 1000cc Twin	1955-56	S.575/3/L*	S.575/7/L*	52091/5	21 1/2"	25791		89.70
Rapide D 998cc Twin	1954	S.756/L	S.756/K/L	52091/5	21 1/2"	25791	25578/3	91.70
Black Shadow 1000cc Twin	1955-56	S.669/L	S.669/K/L	52091/5	21 1/2"	25791	25578/3	92.70
Black Shadow TD 998cc Twin	1954	S.527/L	S.527/K/L	52091/5	21"	25791		***
Black Lightning 1000cc Twin	1955	S.527/L	S.527/K/L	52091/34	31"	70458/4		***
Black Lightning 1000cc Twin	1954-55	S.527/L	S.527/K/L	52091/5	21 1/2"	70458/1		***
Black Lightning 998cc Twin	1955-56	S.527/L	S.527/K/L	52091/5	21"	25791		***
Black Knight 998cc Twin	1955-56	S.467/3/L*	S.467/7/L*	52091/5	21 1/2"	70458/1	25578/1	93.70
Black Prince 998cc Twin	1955-56	S.652/L	S.652/K/L	52091/34	31"	70458/4	25578/1	94.70

† For Separate Inner & Outer Flexible Drives See Chart I (Tank Cover)
 * For Speedometer with Alternative Speed Range See Chart II (Tank Cover)
 ** 3 Earth-Point Version

This scan is explicit for non-commercial use and is not intended for financial or material gain by anyone

SMITHS

Motor Cycle Equipment

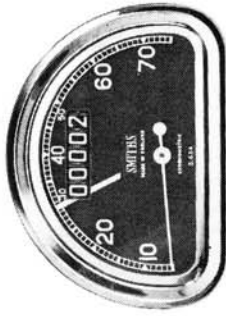
Illustrated on these pages is a representative range of the most popular types of motor cycle equipment manufactured by Smiths.



Speedometer 3" Chronometric Type

The movement is contained in a heavy pressed steel case, specially treated internally and externally against rust. The case is finished in black enamel and the screwed-on bezel is polished chromium plate. Also available with flange bezel and cadmium finished case for nacelle or headlamp installation.

Dial black with white figures and available with or without internal illumination.



"D" Shaped Speedometer Chronometric Type, for Lightweight Motor Cycles.

Finished in a rust-proofed, black enamelled case with clear white figures on a black dial. Also available with flange bezel for nacelle or headlamp installation.

The internal illumination provides a soft diffused light over the dial and pointer.



60 mm. Speedometer

Nemag movement also for Lightweight Motor Cycles.

Available with strap or handlebar fixing.

The flat spun-over bezel of polished chrome gives complete weather protection around the glass.

A variety of dial colourings is available.

3" Revolution Indicators

Chronometric movement. Black dial, white figures and pointer, chrome bezel.

Right angle drive can be built in. A maximum hand may be incorporated if required.

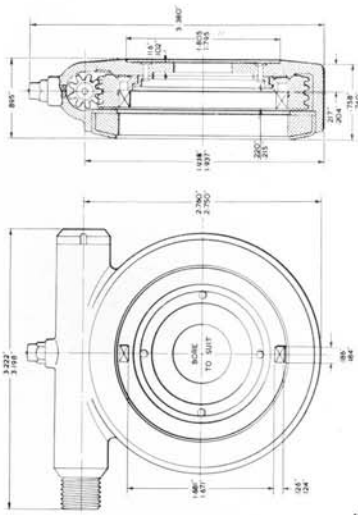
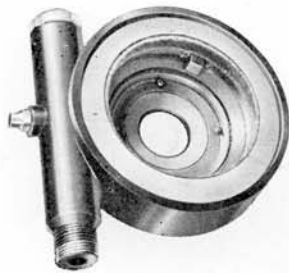
Maximum revolutions per minute, ratio and rotation available in any combination of the following:

MAX. R.P.M. 8,000 9,000 10,000 12,000

RATIO 2:1 4:1 4:1 4:1

ROTATION Clockwise or anti-clockwise

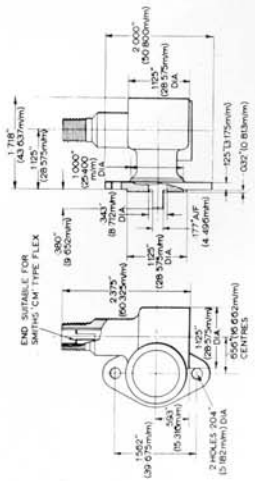
All Smiths motor cycle speedometers are available to register either miles or kilometers per hour.



Gear Box

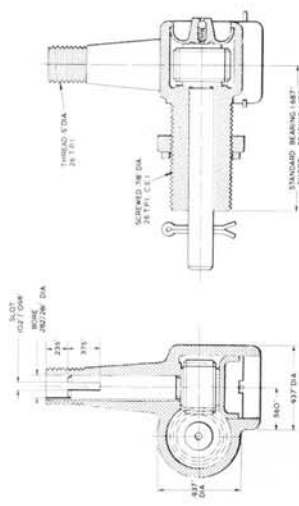
Code No. 52283 /50-69 Series

This hub gear box has a thicker body section than those in the 52283 /1-49 series and uses the larger felt seal. It can be used where the hub is slotted to provide the necessary engagement or where other provision can be arranged. Clockwise or anti-clockwise input. Ratio 2 : 1. Suitable Flexible Drive 53395.



Gear Box Code No. 70549 Series

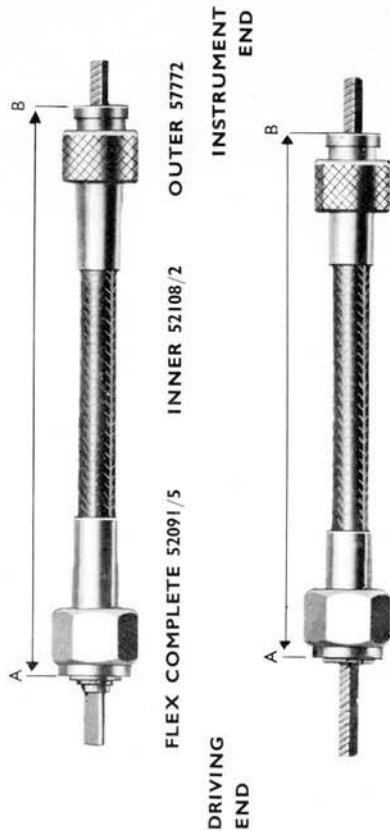
These gear boxes reverse the rotation of the shaft to which they are attached. The rotation is determined by looking immediately on to the end of the engine spindle with which the gear box or flexible drive is engaged. Plain phosphor bronze bearings. Ratios 1 : 1 and 2 : 1. Suitable Flexible Drive 52091.



Brake Drum Fitting Gear Boxes

Basic Codes

34159 Short Bush. Right Hand 70458 Long Bush. Left Hand
 25224 Long Bush. Right Hand 70458/1 Short Bush. Left Hand
 Boxes available for either external gear ring drive or for internal brake-drum fitting, with left or right hand gears to maintain clockwise output.
 Suitable Flexible Drive for these right angle gears 52091



FLEX COMPLETE 53395 INNER 52108/1 OUTER 53398

The nominal length of a flexible drive is measured between points 'A' and 'B'

Chart I FLEXIBLE DRIVES

Flexible Drive (Complete)	Inner Flexible Drive (Only)	Outer Flexible Drive (Only)
52091/5	52108/2	57772
52091/20	52108	70161
52091/25	52108/2	57772/1
52091/26	52108/2	53360
52091/32	52108/2	57772/2
52091/34	52108/2	57772/3
52091/41	52108/2	57772/6
52091/43	52108/2	57772/7
53395	52108/1	53398
53395/1	52108/1	53398/1
53395/3	52108/1	53398/3
53395/4	52108/1	53398/4
53395/18	52108/1	53398/17
53395/19	52108/1	53398/18
53395/20	52108/1	53398/28
53395/23	52108/1	53398/19
53395/24	52108/1	76356
53395/29	52108/1	53398/20
DF. 1110/00	DI. 1110/00	DO. 1110/00
DF. 1110/00	DI. 1110/00	DO. 1110/00
DF. 1111/00	DI. 1110/02	DO. 1111/00
DF. 1111/02	DI. 1110/02	DO. 1111/02
DF. 7302/01	DI. 7323/00	DO. 7302/00
DF. 8231/00	DI. 8231/00	DO. 8231/00

Chart 1, above, shows the code numbers of the separate Inner and Outer Flexible Drives which form the complete Flexible Drives listed in the specification section of this booklet.

Chart II ALTERNATIVE SPEEDOMETERS

MILES		KILOS	
80 m. p.h.	120 m. p.h.	140 k. p.h.	180 k. p.h.
S. 433/1	S. 433/3	S. 433/5	S. 433/7
S. 467/1	S. 467/3	S. 467/5	S. 467/7
S. 467/9	S. 467/11	S. 467/13	S. 467/15
S. 467/33	S. 467/35	S. 467/37	S. 467/39
S. 467/57	S. 467/59	S. 467/61	S. 467/63
S. 467/65	S. 467/67	S. 467/69	S. 467/71
S. 467/145	S. 467/147	S. 467/149	S. 467/151
S. 467/153	S. 467/155	S. 467/157	S. 467/159
S. 467/161	S. 467/163	S. 467/165	S. 467/167
S. 467/169	S. 467/171	S. 467/173	S. 467/175
S. 467/177	S. 467/179	S. 467/181	S. 467/183
S. 467/185	S. 467/187	S. 467/189	S. 467/191
S. 480/1	S. 480/3	S. 480/5	S. 480/7
S. 491/1	S. 491/3	S. 491/5	S. 491/7
S. 525/1	S. 525/3	S. 525/5	S. 525/7
S. 546/1	S. 546/3	S. 546/5	S. 546/7
S. 575/1	S. 575/3	S. 575/5	S. 575/7
S. 608/1	S. 608/3	S. 608/5	S. 608/7
S. 608/9	S. 608/11	S. 608/13	S. 608/15
S. 608/17	S. 608/19	S. 608/21	S. 608/23
S. 651/1	S. 651/3	S. 651/5	S. 651/7

Chart II, above, shows instruments of a different speed range which are suitable as alternatives to those marked with an asterisk in the specification section of this booklet.

SMITHS

HEAD OFFICE
CRICKLEWOOD WORKS,
LONDON, N.W.2.
 Telephone : Gladstone 3333

MOTOR ACCESSORY DIVISION

SALES AND SERVICE
50, OXGATE LANE,
LONDON, N.W.2.
 Telephone : Gladstone 8030

Telegrams : Speedofar, London. Telex 22671.

Printed in England by Roadcraft Press Ltd., N.W.2. February, 1962. Ref. No. S.1012/2E