



A·J·S

6 h.p. 1915-1920

7 h.p. 1921-1924

Motor Cycles

**CATALOGUE
OF
SPARE PARTS.**

J. STEVENS & Co. (1914) Ltd
Gralsley House, Wolverhampton,
England

Price 6d. each.

1925

K. J. S.

6 H.P. 1915-1920

7 H.P. 1921-1924

Motor Cycles

CATALOGUE

SPARE PARTS.

J. STATION & Co. (1911) Ltd
Sovereign Works, Southampton,
England.

Price 6d. each.

1915-24.

A. J. S Motor Cycles

LIST OF SPARE PARTS

—FOLD—

6 & 7-H.P. 3-SPEED

COUNTERSHAFT GEARED

CHAIN DRIVEN MODEL.



A. J. STEVENS & Co. (1914) Ltd.,

Head Office: GRANSHILL HOUSE Works: GRANSHILL HILL.

WOLVERHAMPTON.

ESSEX.

THE PATENT
OFFICE

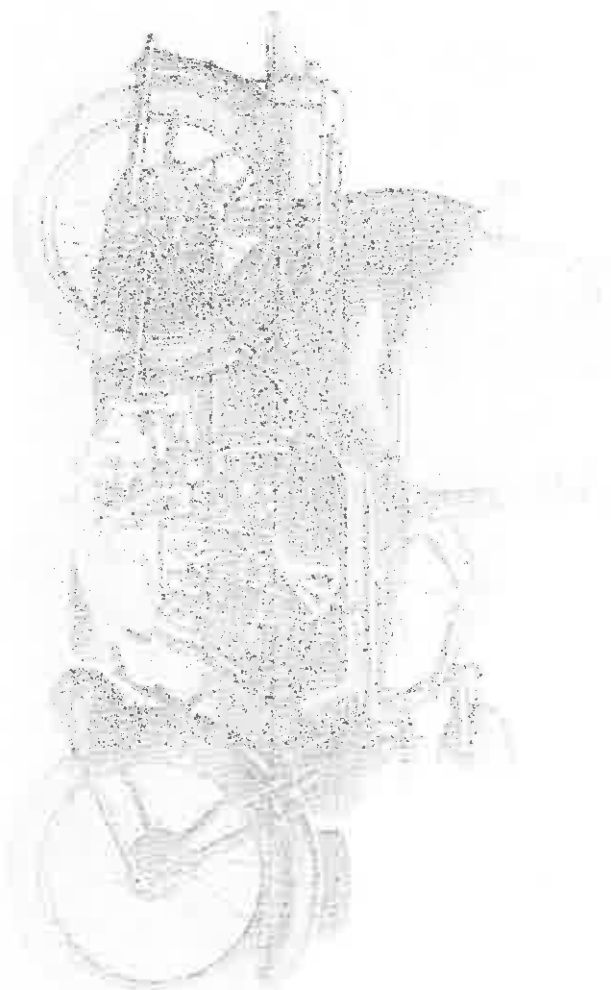
39, MARK LANE,
LONDON, E.C. 3.

SOLE AGENTS
FOR THE
PROVINCE OF
SOUTH AFRICA

THE MOTOR CYCLES

INDEX

	Page	Page
	of Part	of Part
	1, 2, 3, 4, 5, 6, 7, 8, 9, 10, 11, 12, 13, 14, 15, 16, 17, 18, 19, 20, 21, 22, 23, 24, 25, 26, 27, 28, 29, 30, 31, 32, 33, 34, 35, 36, 37, 38, 39, 40, 41, 42, 43, 44, 45, 46, 47	1, 2, 3, 4, 5, 6, 7, 8, 9, 10, 11, 12, 13, 14, 15, 16, 17, 18, 19, 20, 21, 22, 23, 24, 25, 26, 27, 28, 29, 30, 31, 32, 33, 34, 35, 36, 37, 38, 39, 40, 41, 42, 43, 44, 45, 46, 47
Engine Parts	1-12	9, 11, 13, 35, 37
Hub, Kin, etc.	1	
Rear Brake Parts	34, 30	
Interchangeable Wheel, Complete	12	13
14, 31		15, 35
14		15
Countershaft Gear, Clutch, Kick Starter, Change Speed Lever Parts	10, 18, 30	17, 10, 37
10		21
Front Brake Parts, 1915-1920 Pattern	20	21
Front Expanding Brake Parts	34	35
Handle-Bar	20	21
Frame Parts, Front and Back Stands	22	23
Spring Fork Parts	22, 21	23, 25
Carrier	24	25
Chain Case Parts	20	27
Mudguard Parts	20	27
Tank and Fittings	26	27
Carburetor Parts, Two Lever Type, A.M.A.C.	26	29
Carburetor Parts, Two Lever Type, B.M.W.S.	45	
Magneto and Ignition Parts	30	31
Magneto Lighting Set	40	
Oil Pump Parts	32	33
Alterations affecting the 1921 47 h.p. Model	34	35
1922 23 & 1924 Engine Parts, 1923 4 Change Speed Lever, Kick-starter, Pedal Rubber, etc.	30	37
Sidewall Chassis Parts, 6 h.p., 1915-20	38	39
Sidewall Chassis & Body Parts, 7 h.p., 1922 4	40	41
Sidewall Chassis & Body Parts, 7 h.p., D 1924	48	
Sidewall Parts, Hood, Mudguard, etc.	42	43
Brake Cables, Controls, etc.	40	
Chain Parts, Foot Cases, Saddle, Inhibitor	44	
Leg Shields	41	
Tires	41	
Alterations affecting the 1921 D Model	47	



THE MOTOR VEHICLE OF THE FUTURE
Model "D"



THE MOTOR VEHICLE OF THE FUTURE
Model "E"

FOR ENVOYOR

SPARE PARTS CATALOGUE

This edition of our Spare Parts Catalogue includes illustrations of practically every item on the machine and side car. We feel sure that the inclusion of the drawings will materially aid to the assistance of our officers in recognizing the various parts when replacements may be required.

Orders are particularly asked to read over the instructions preceding the ordering of Spare Parts.

This Catalogue does not exclusively with our D.A. 710, 1915, 1921 Model D Motor Cycles, and the 1924 Model D1 Motor Cycles.

All previous lists are cancelled.

All new Motor Cycles, Spare Parts, Reprovements, Repairs etc. are only supplied or sent if not under the guarantee given with each new motor cycle, and under no other conditions.

WARRANTY N. J. STEVENSON & CO. (1914) LTD.



Important Rules to be observed:

It will greatly facilitate prompt attention to all our communications or requirements if letters or goods are addressed to the Company, and to the department concerned.

The main departments are as follows:

New Machines	Repair Sales Department.
Repair Machines or Reprovements	Repair Department.
of Parts under Guarantee	Spare Parts Department.
Spare Parts	Account Department.
Accounts	

Parts sent to us to be repaired, replaced or re-painted, should bear distinctly the maker's full name, and address, and explicit instructions should follow by letter or otherwise indicating specifically what is required.

All orders are subject to credit check. Goods shipped on credit are subject to return if not paid for by the date specified.

Goods returned to us for any reason must be given us to show the goods are to be returned, whether cracked, uncracked, passengee or goods train. This refers only to complete machines or fully fitted articles such as engine, etc.

When forwarding a complete Motor Cycle, do not fail to remove all accessories such as lamp, horn, tools, brushes, etc., otherwise we cannot be held responsible for their safe return although we take every possible precaution in this respect.

[1]

Estimates.

We are sometimes asked by clients when sending their Engine or Motor Cycle over, for sparis or overhauls to furnish an estimate for the necessary work. We are pleased to do this on the distinct understanding that we reserve the right to charge for any extra work or new parts found necessary to put such machine or engine over in good running order which it may have been impossible to detect when dismantling.

We prefer not to undertake a repair or overhaul (nor do we accept any responsibility) when the estimate for same has been furnished by the owner.

If an estimate is not accepted after tender, a charge is made for taking down, re-assembling, and preparing the estimate.

All goods returned by us are consigned Carriage Forward.

When sending parcels by letter of work to be done in repairs, please do not mix up such instructions with other matter.

Attention to these details will obviate delay and inconvenience to both parties.

All letters must be addressed to our Head Office:

THE ALSTARY TRUCK CO. WORKS, WILKINS AVE. PORT, N. I.

By the President

When you order any part of the ... the ...
... of ... the ... of the part. The members
... in ... the ... reference. In addition
... the ... and ... it is always advised to
... of the ... which will be ...
... of the ... below the
... of your order.

Prices of Spare Parts.

PLEASE NOTE. Please do not confuse the prices
listed ... of any kind in ...
... All ... should be ...
... to ...
For ... of ...

We shall be pleased to quote for any ...
... which to know the ...
... please ...

Terms of Business.

When ordering, please pay ... the ...
... must be ...
... of ...

In no amount ... the ...
... to ...
... to ...
... to ...
... to ...

Wm. J. ...

U. S. ...

Specimen ...

If paying ...

Should effect ...

Packing Boxes, Cases, etc., are charged at cost and are strictly Non-Returnable.

...
...
...

...
...

...
...

6139

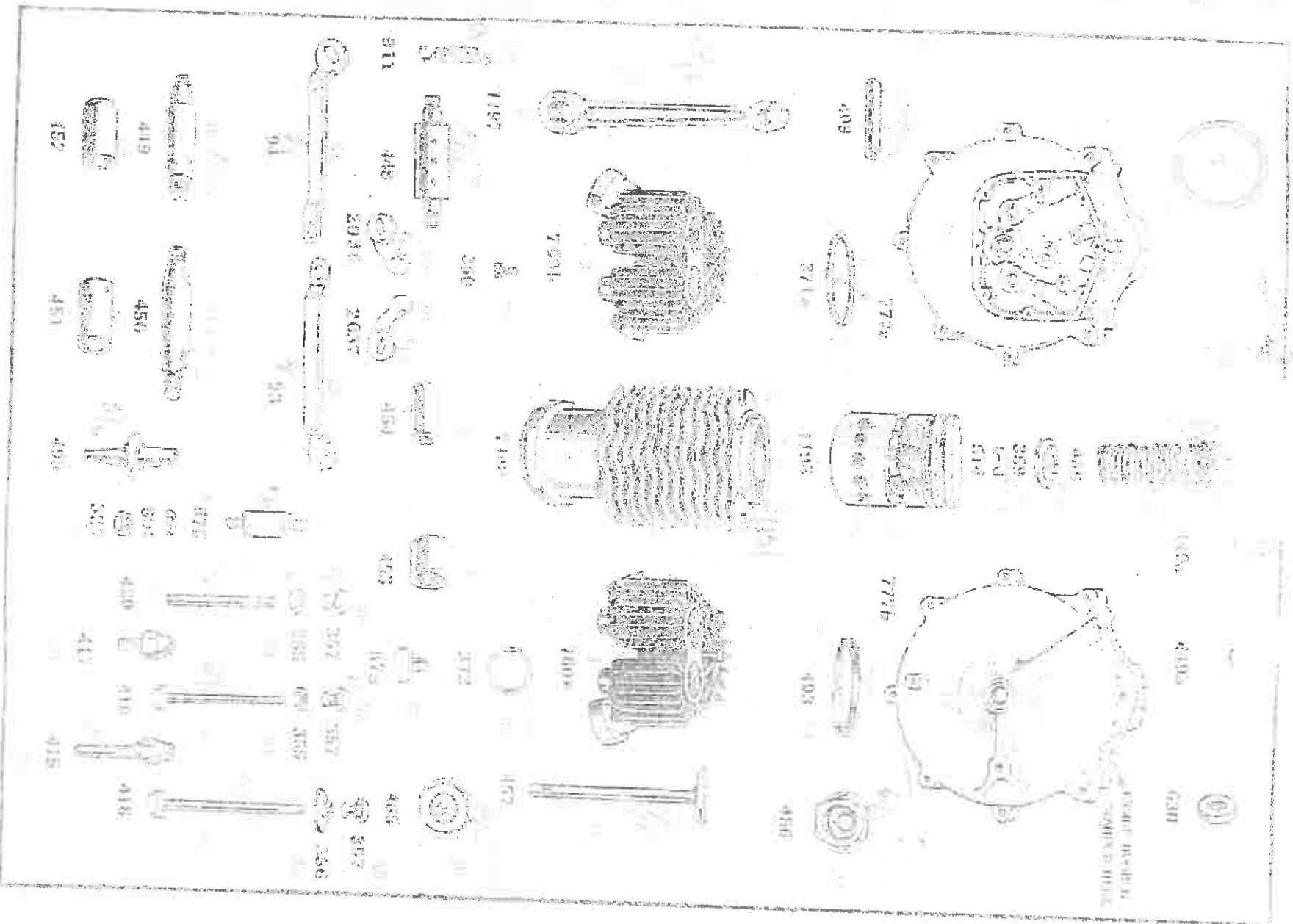
ENL

P.A.L.I.S.

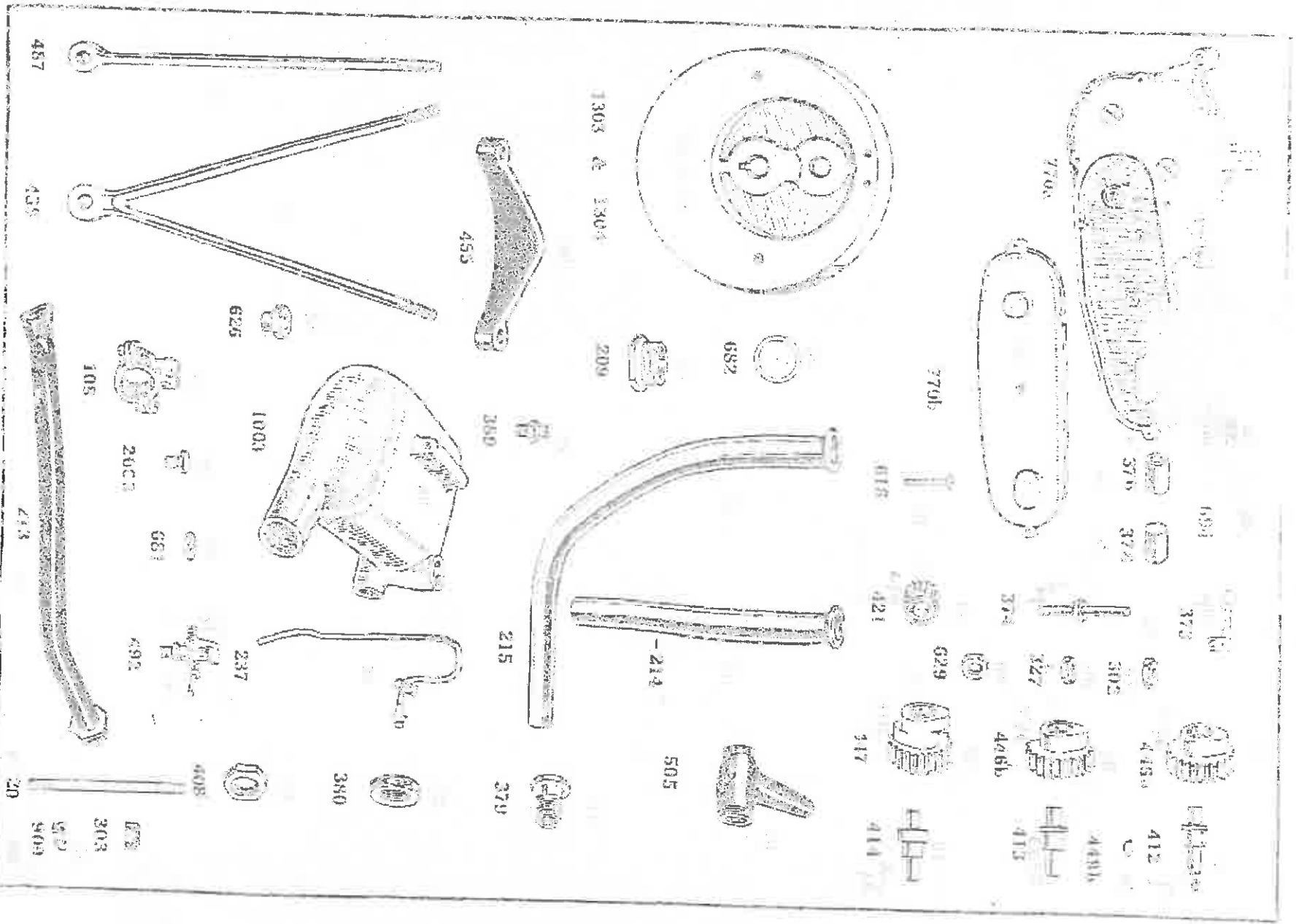
Part Description of Item
 No. Key of Part Cylinder (905-101) 2000

760A	Front Detachable Cylinder Head with Valves		
760B	Back Detachable Cylinder Head with Valves		
760500B	Front or Rear Detachable Cylinder Head with Valves		
	Key of Part		
7601	Cylinder Head of Front or Rear	...	each
871	Cylinder Head Washer	...	
871A	Detachable Head Washer	...	
1137	Connecting Rod Connector with Bushes
433	Connector Bush, Big End Rod
434	Connector Bush, Small End Rod
448	Crank Pin without Bush
050	Crank Pin with Bush
839	Crash Pin
461	Crashpin Pin Bush
1192	Piston pin
498	Piston Ring
157	Valve Inlet or Exhaust
480	Valve Guide
433	Valve Springs
836	Valve Spring Cone
511	Valve Spring Cone
439	Valve Valve Guide
436	Valve Valve Guide
872	Valve Valve Guide
98	Valve Valve Guide
91	Exhaust Valve Arm (Front Cylinder)
2026	Exhaust Valve Arm (Back Cylinder)
2037	Exhaust Valve Spring Arm in Position of Intake
675	Exhaust Valve Spring Arm Head (Cylinder)
287	Exhaust Valve Arm Pin
391	Exhaust Valve Arm Pin Nut
911	Exhaust Valve Arm Nut Washer
418	Exhaust Valve Tappet Lever and Rocker (Long)
429	Exhaust Valve Tappet Lever
320	Exhaust Valve Tappet Lever
952	Exhaust Valve Tappet Lever
851	Exhaust Valve Tappet Lever
287	Exhaust Valve Tappet Lever
878	Tappet Stud	...	each
416	Exhaust Tappet Guide (Front and Back Cylinders)
417	Intake Tappet Guide (Front and Back Cylinders)
449	Main Shaft, Intake Side, Long (Lower)
450	Main Shaft, Intake Side
449	Key for Intake Spring Pinion to Main Shaft
453	Main Shaft, Intake Side, Crankcase Bush
452	Main Shaft, Intake Side, Crankcase Bush
771A	Crankcase Intake Side, with Bushes
771B	Crankcase Intake Side, with Bushes
771C	Crankcase Intake Side, with Bushes
380	Half of Crankcase are not supplied separately
455	Oil Drain Plug for Crankcase
455	Valve connector with Springs etc.
1122	Pinion, complete with Oil Seal Pin and Key
1130	Pinion, complete with Crankcase Bush and Key
	(Illustration)

The illustrations of this list are taken from the drawings on pages 102-104



NOTE - When ordering, quote this number.



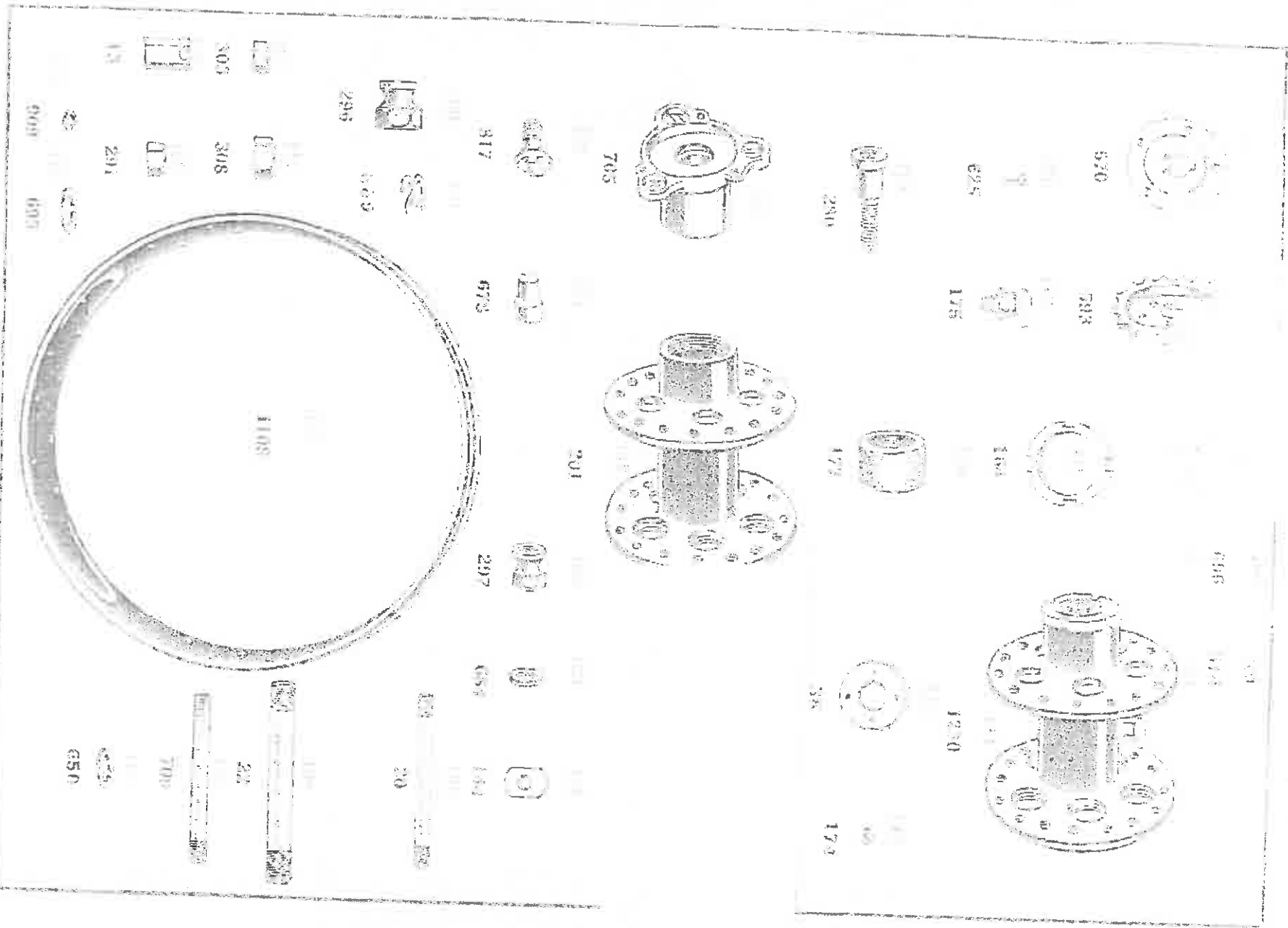
NOTE.—When ordering, quote Part Number only.

5-1-38 Engine

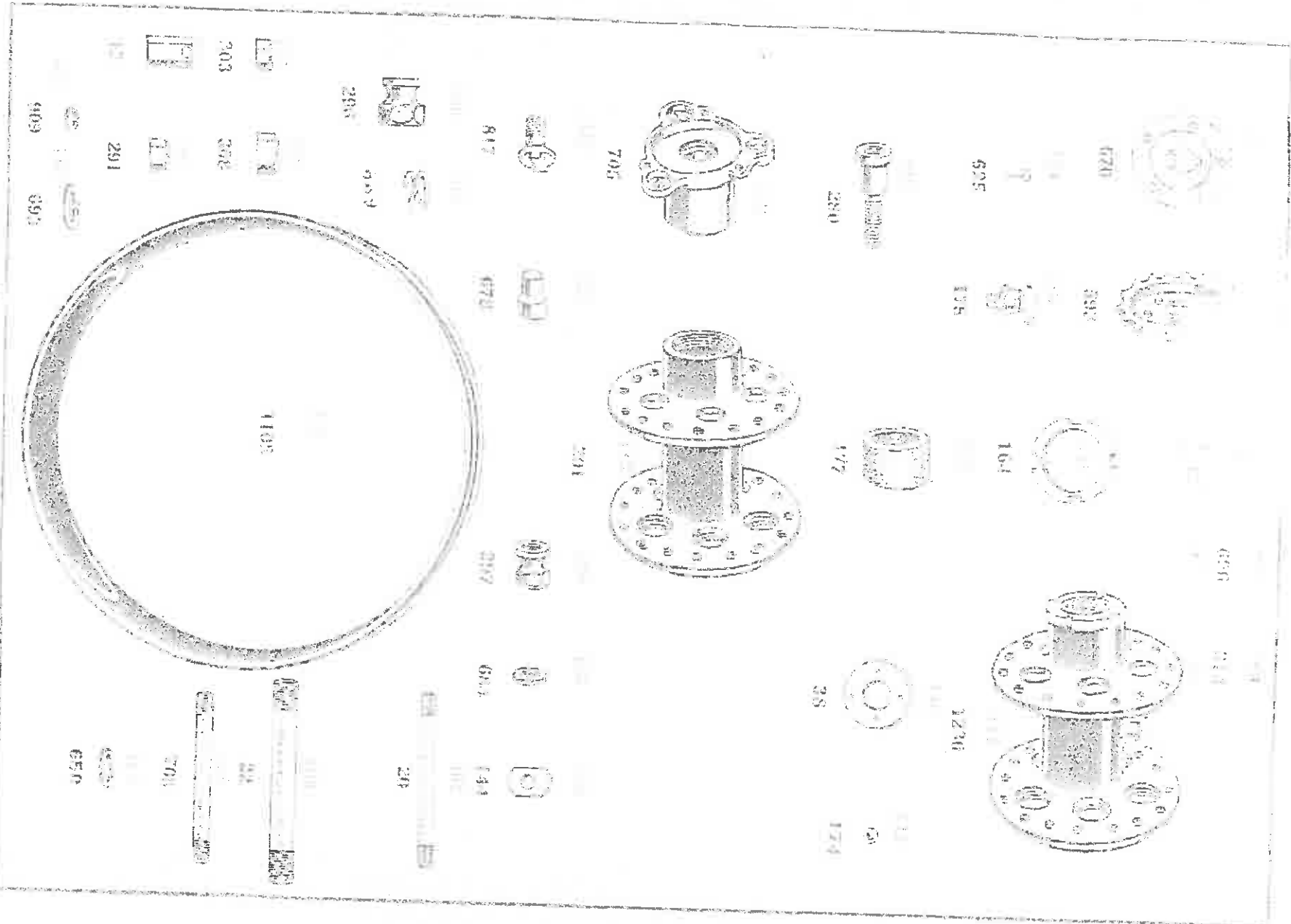
Part No. 800

Part No.	Description of Part.	QTY.	PRICE	TOTAL
588	Engine Spocket
591	Timing Spocket Pin, for Bolting Spocket to sleeve
593	Engine Spocket Tin Washer
614	Engine Spocket Pin Nut
570	Engine Spocket Sleeve
596	Timing Spool of Sleeve Lock Nut
689	Engine Spocket Sleeve Nut Spring Washer
26	Top Spring Engine Plate Bolt
908	Top Washer for Engine Plate Bolt
365	Top Nut for Engine Plate Bolt
709	Top Spring Engine Plate Bolt
650	Top Spring Washer for Top Crankshaft Bolt
594	Top Nut for Top Crankshaft Bolt
13	Breakable Nut
92	Top Spring Engine Plate Bolt
694	Top Spring Washer for Engine Plate Bolt
508	Top Nut for Engine Plate Bolt
207	Hub Shell, with Flange Top rolled in
85	Hub Hollow Spindle
1230	Hub, complete, less Spindle and Bush Cap
161	Hub Lock Ring
94	Hub Cap (Adjustable)
59	Hub Cap (Fixed)
154	Steel Balls for Hub (Set of 2)
175	Hub Lubricator
705	Hub Cap
177	Hub Cap
695	Hub Cap
980	Hub Cap
684	Hub Cap
817	Hub Cap
676	Hub Cap
144	Hub Cap
1108	Hub Cap
297	Hub Cap

This is a preliminary listing of parts and illustrations on pages 30 and 31.



NOTE: When ordering, quote this number code.



NOTE: When ordered, the model that applies will be indicated.

Wagon Repair Brake and Wheel, etc.

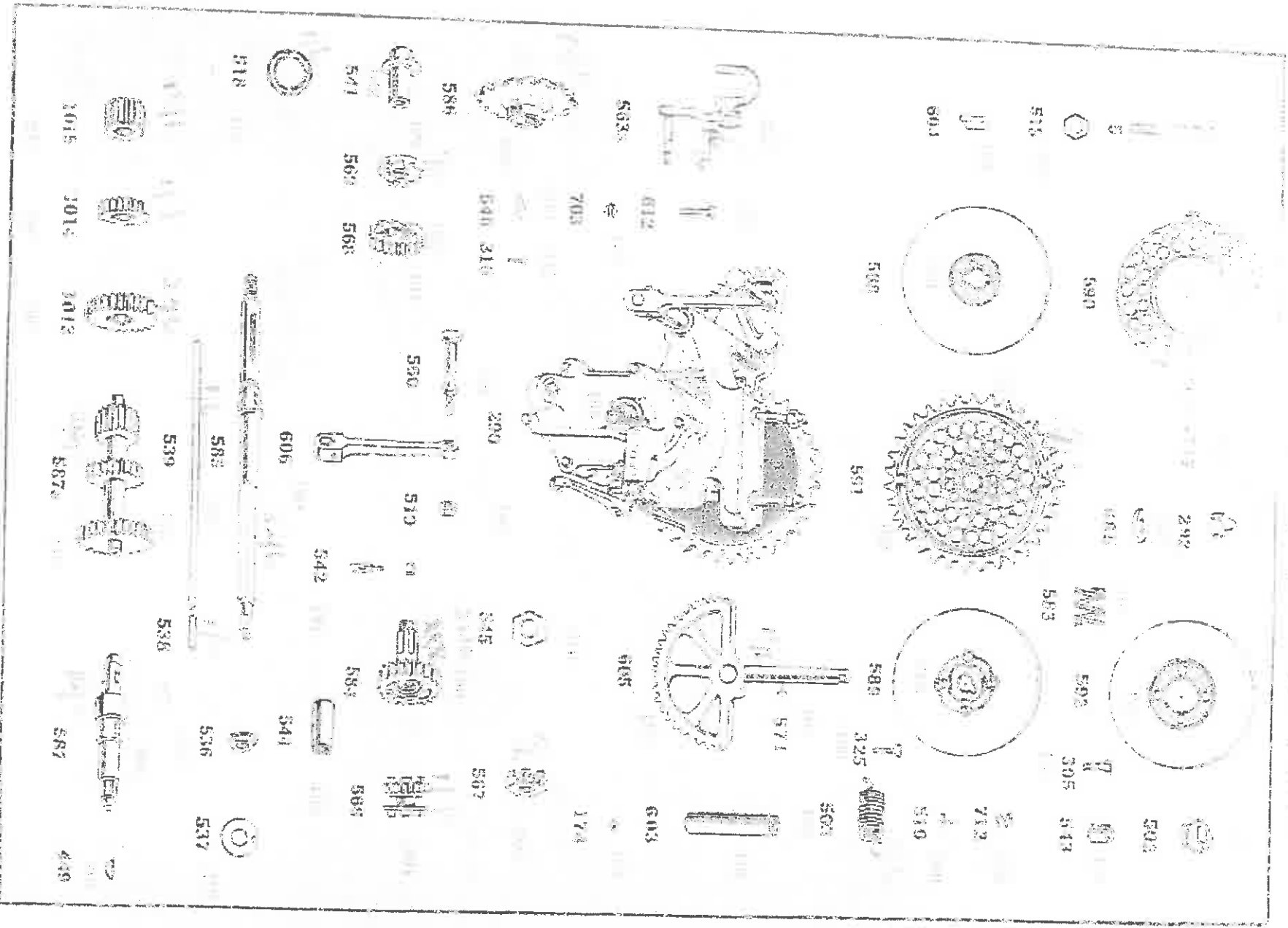
Part No.

Description of Part.

1309	Combined Brake Drum and Spool with Four Brakes	200	
1310	Brake Shoes with Lining	200	
1310A	Brake Shoes with old Lining	200	
1310C	Brake Lining only with Rivets	200	
810	Brake Shoe Expansion Springs	200	
182	Brake Shoe Expansion Springs	200	
485	Brake Shoe Expansion Spindle Washers	200	
502	Brake Shoe Expansion Spindles Shim	200	
178	Repair Shoe Tension Spindles Shim	200	
	90	200	
	fourth Lubrication	200	
	oil	200	
	oil	200	
	oil	200	
	oil	200	
	oil	200	
809	Front Brake Pedal Spindle Small Run	200	
809	Rear Brake Pedal Spindle Small Washer	200	
802	Front Brake Pedal Spindle Large Nut	200	
628	Rear Brake Pedal Spindle Large Washer	200	
1107	Washer complete with Spindle and Dust Cap	200	
305	Washer Spikes	200	
171	Washer Spikes Nipples	200	
188	Washer and Dust Cap for Front and Spare Wheels	200	
305	Hub Dust Cap Bolt	200	
899	Hub Dust Cap Bolt Nut	200	
697	Hub Dust Cap Bolt Washer	200	
193	Hub Dust Cap Pressure Piece	200	
190	Distance Piece for Front and Spare Wheels	200	
6	Hub Cap Tire	200	
185	Hub Sleeve Guts for Detachable Wheel	200	
195	Inside Distance Piece for Spare Wheel	200	
195	Outside Distance Piece for Spare Wheel	200	
284	Detachable Wheel Spinner	200	

Note: Illustrated separately.

quantity of 40
for set of 40



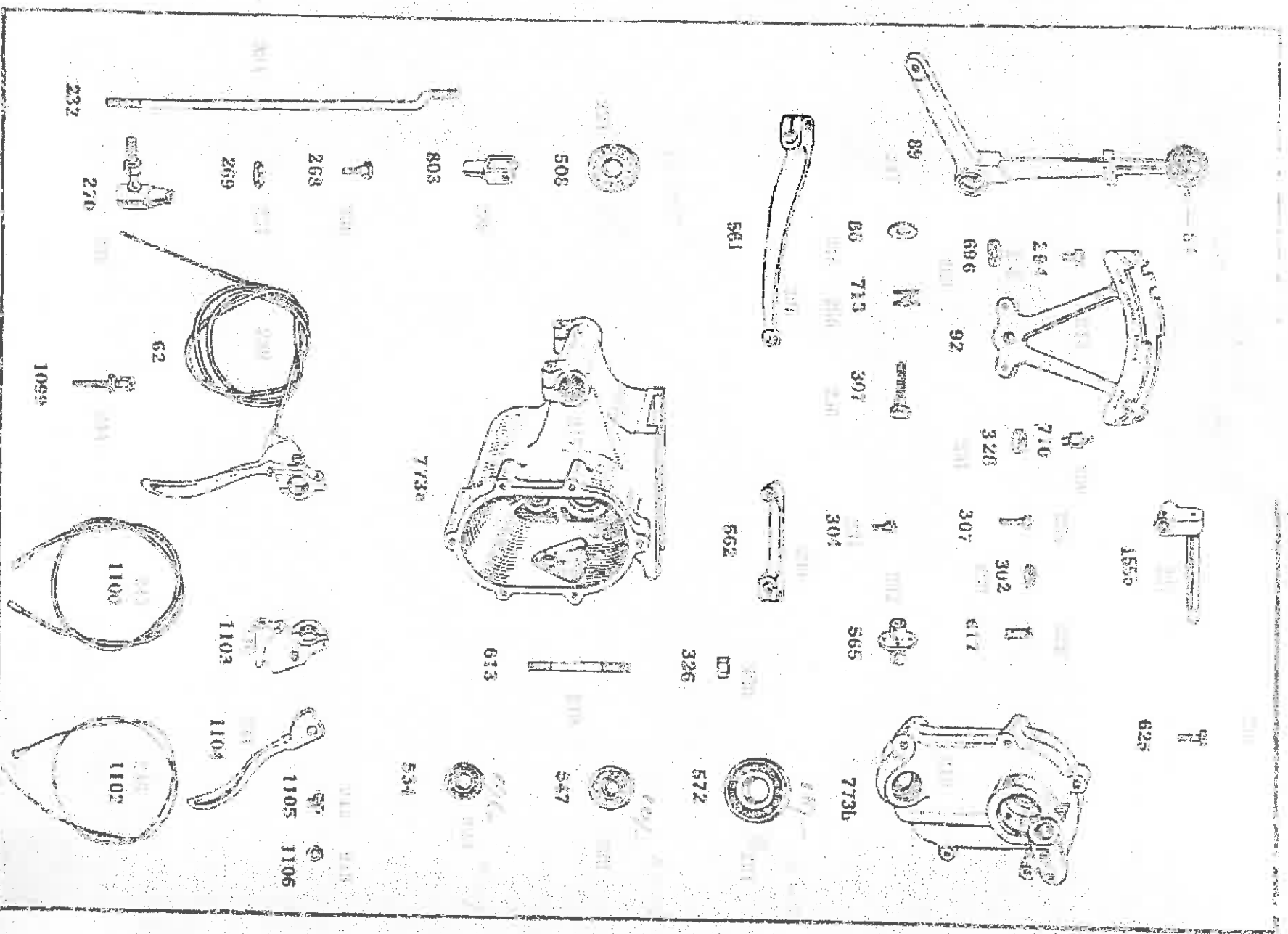
NOTE: When ordering quote Brock Number only.

Goer Box Parts

... and ...
...
...

Part No.	Description of Part		
773A	Gear Box Shell, less fittings
773B	Gear Box Cover, less fittings
618	Gear Box Cover Long Stud
323	Gear Box Cover Long Stud Nut
572	Bridge Gear Box Bearing
517	Machine Gear Box Bearing
584	Small Gear Box Bearing
508	Clutch Sprocket Bearing
561	Clutch Operating Lever at Side of Gear Box
397	Pin for Split End of Clutch Operating Lever
1555	Clutch Operating Shaft at Top of Cover
617	Adjusting Screw in Operating Shaft for taking up Slack in Bowden Cable
305	Adjusting Screw Lock Nut
565	Gear Shafting Lever outside Gear Box
304	Pin for Split End of Gear Shafting Lever
565	Gear Shafting Base
625	Screws for Gear Shafting Base
332	Change Speed Stud Lever on Gear Change and Gear Box
398	Yoke End for Change Speed Stud
368	Yoke End Pin
369	Lock Nut for Yoke End Pin
278	Ball Joint for Yoke End
53	Clutch Control Lever on Hand-lever, complete with Cable
1103	Clutch Control Lever on Hand-lever, complete with Cable and Clutch Lever only
1104	Clutch Lever only
1105	Larger Head Pin for Clutch Lever
1106	Washer for Clutch Lever Pin
1099	Bowden Cable Adjuster
1190	Bowden Cable Guide Under Case
1102	Bowden Clutch Guide Under Case
39	Change Speed Lever with knob
88	Change Speed Lever with knob
89	Change Speed Lever, knob only
452A	Change Speed Lever and complete
42B	Ball portion of Change Speed Quadrant
716	Front Portion of Change Speed Quadrant
328	Quadrant Stud
326	Nut for Quadrant Stud
294	Pin for Fixing Harmon Bars of Quadrant to Frame by Washer for Quadrant Pin
695	Washer for Quadrant Pin
83	Plain Washer for Change Speed Lever
719	Double Spring Washer for Screws in Change Speed Lever
307	Pin for Change Speed Lever

Not shown separately



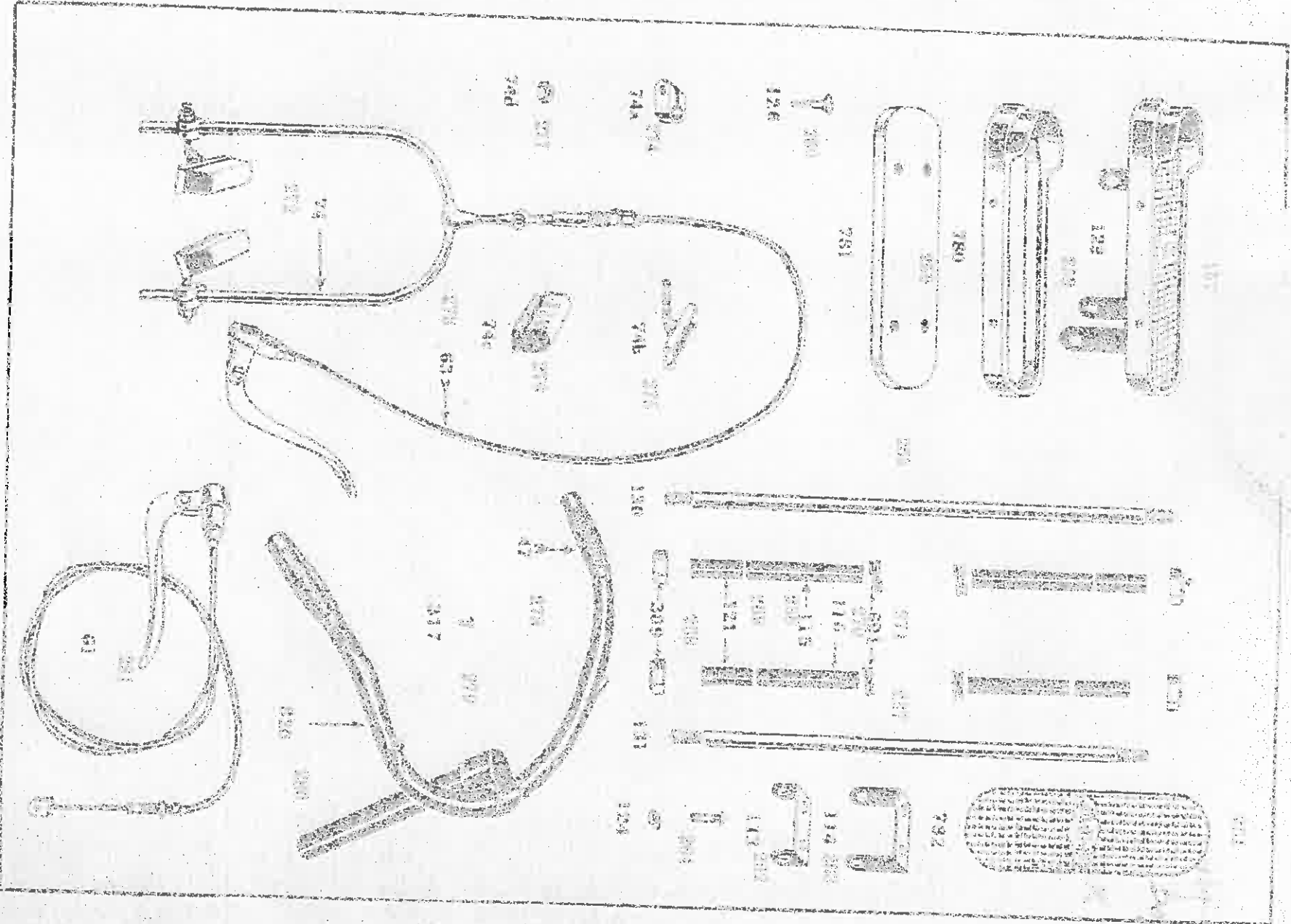
NOTE—When ordering quote Black Numbers only.

This Diagram is for reference only and is not to be used for identification purposes. It is not intended to be used for identification purposes.

B. J. P. Football Pairs, Front Brake and Handlebars

<i>Part No.</i>	<i>Description of Part</i>	<i>Part. No. & Price</i>
189	Footballer's controls	...
780	Footballer's Aluminium handle	Part. No. 915, 2/-
783	Footballer's Wood Base	...
786	Footballer's Wood Base	...
792	Footballer's Mast	...
113	Steel Footballer's Bracket	...
111	Large Footballer's Bracket	...
121	Footballer's Bracket, Ball and Seat	...
730	Front Footballer's Foot, without Nuts	...
115	Long Distance Frame for Front Footballer's Foot	...
481	Foot Footballer's Foot, without Nuts	...
399	Foot Nuts for Footballer's Feet	...
121	Steel Distance Tube for Footballer's Feet	...
116	Long Distance Tube for Footballer's Feet	...
801	Footballer's Mast, for Footballer's Feet	...
71	Front Wheel Brake, complete	...
69	Front Brake of steel, complete, with Lever, for rubber ball Axle, Size 2 1/2, etc.	...
71	Strong Clips for Front Brake Shoes	Part
731	Front Brake Shoes	...
740	Front Brake Bracket	...
740	Wheels for Brake Shoes	...
47	Handlebar Grips	...
917	Front Section of Parting, Control, Lever and Handlebar	...
885	Handlebar with Ring	... 1915, 20 only
887	Handlebar with Footrest	... 1915, 20 only
888	Handlebar with Lever and Ring, (Small Type) (Type)	...
41	Frontmost Brake, complete, with Footrest, etc.	... with 5, 20 only
87	Footballer's Lever, complete, with Footrest, etc.	...

**Price is common to both types.*



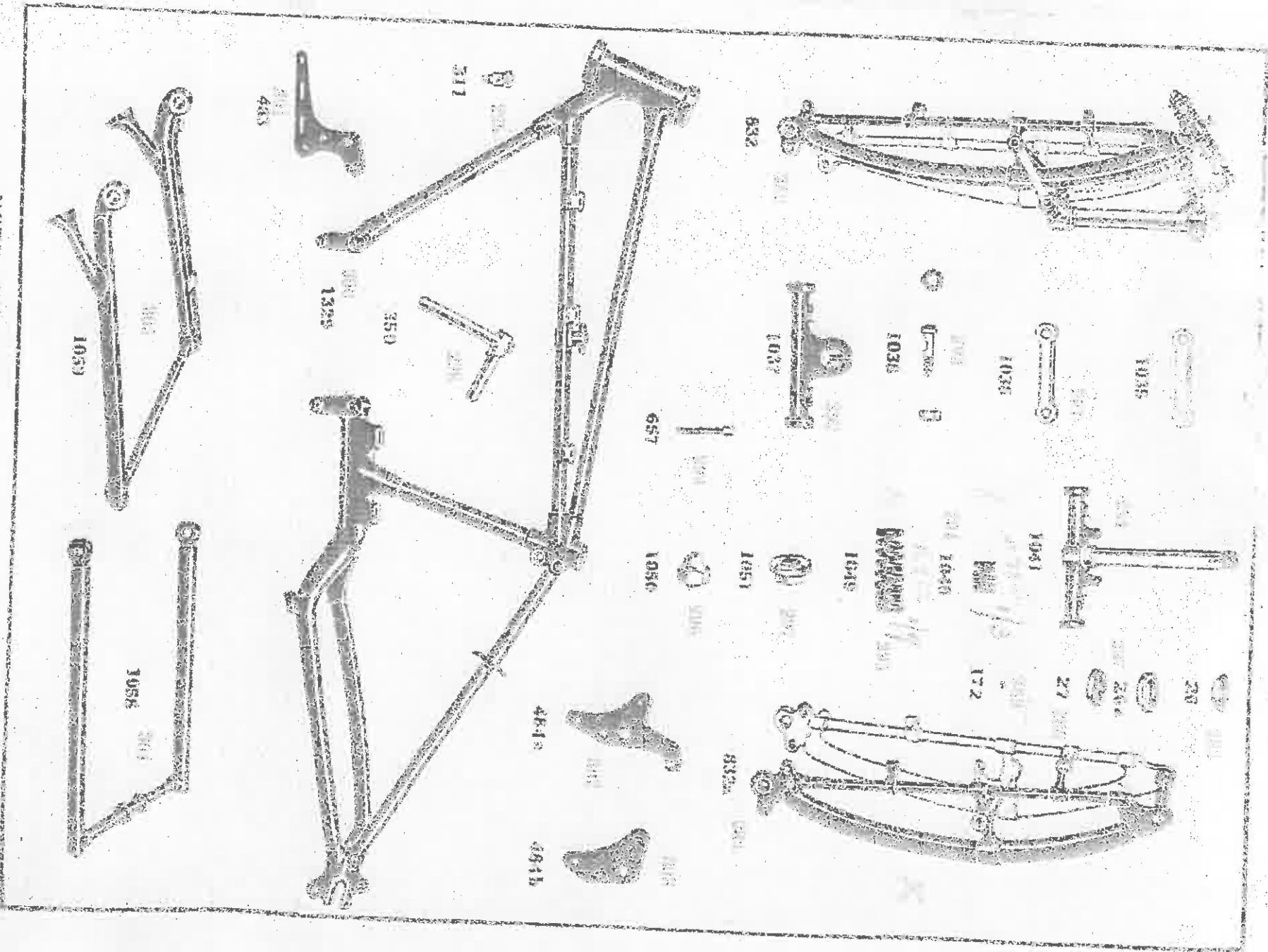
NOTE: When ordering spare parts, specify only the part number and the name of the part as shown on the drawing. Do not order parts by description only. The manufacturer's name and address are given for reference only.

A. I. S. Tractor, Spring Links, etc.

Part No.	Part No.	Description of Part.
852	1032	Tractor Link, complete, "Brumpton"
853	1033	Front Link (Right) only
854	1034	Sleeving Steel and Crown Link
855	1035	Ball Head Lubricator
856	1036	Grease Cup Lubricators, (Top & Bottom)
857	23	Wear Head Knee, Top
858	858	Frame Head Knee, Bottom
859	27	Work Steel Ball Jaw, Bottom
860	172	Steel Roll Pins, 1/2" Dia. Per Set 54
1035	1035	Left-Hand Front Fork Link, Serrated (Left)
1036	1036	Right-Hand Front Fork Link, Serrated (Right)
1037	1037	Spring Fork Clip
1038	1038	Pin Nut and Washer, for Spring Fork Clip
1039	1039	Front Motor Springs
1040	1040	Bank Rider Springs
1050	1050	Leaf Nut, for Banker Springs
1051	1051	Pin and Nut, for Banker Springs
920	920	Swivel Bar
932	932	Adjusting Lip for Ball Wheel
1039	1039	Frame, complete
428	428	Front Engine Plate
491	491	Back Engine Plate, Left-Hand Side
492	492	Back Engine Plate, Right-Hand Side
1037	1037	Ball Wheel Stems
1038	1038	Ball Wheel Stem and Arm Spring Clips

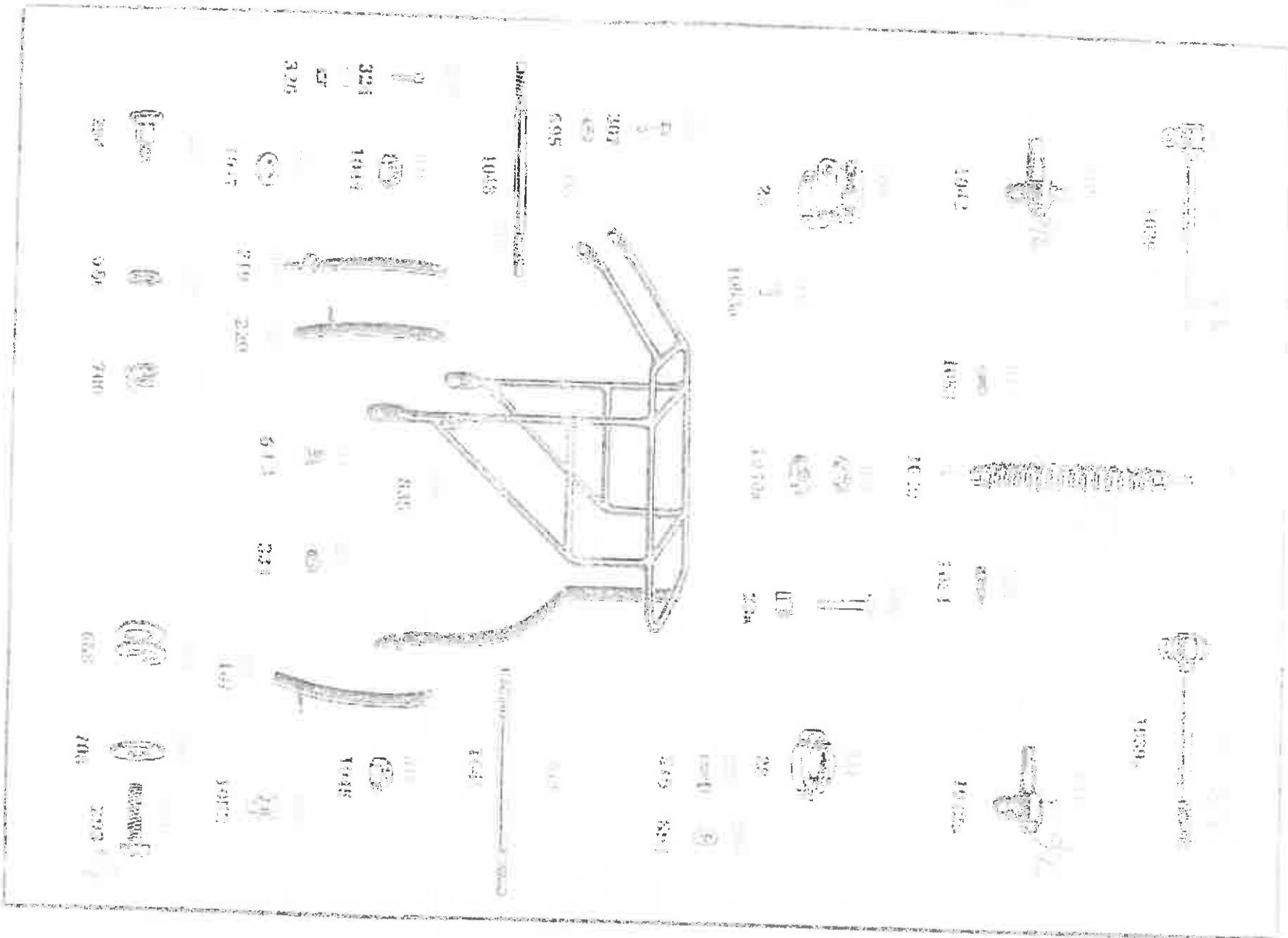
It is most important that Year, Horse-Power and Engine Number be stated when ordering.

FIGS. 1 TO 10, FIG. 11.



NOTE.—When ordering quote Part Numbers only.

The Best known component with this set of numbers is the one which will be available in the most quantities.



NOTE: When ordering quote Part Number only.