

# SPARES LIST

FOR

## 1958 MATCHLESS

350 MODEL G3LS SPRING FRAME SINGLE, TOURING  
350 MODEL G3CT SPRING FRAME SINGLE, TRIALS  
350 MODEL G3CS SPRING FRAME SINGLE, SCRAMBLES  
500 MODEL G80S SPRING FRAME SINGLE, TOURING  
500 MODEL G80CS SPRING FRAME SINGLE, SCRAMBLES  
500 MODEL G9 SPRING FRAME TWIN, TOURING  
600 MODEL G11 SPRING FRAME TWIN, TOURING  
600 MODEL G11CS SPRING FRAME TWIN, SCRAMBLES



Compiled and Issued by the Manufacturers

## MATCHLESS MOTOR CYCLES

(Proprietors: ASSOCIATED MOTOR CYCLES LIMITED)

Registered Offices:

PLUMSTEAD ROAD, PLUMSTEAD  
LONDON, S.E.18 . ENGLAND

Nearest Station:  
WOOLWICH ARSENAL  
(Southern Region Railway)

Factories:  
BURRAGE GROVE and MAXEY ROAD  
PLUMSTEAD, S.E.18

Telegrams and Cables: "MATCHLESS, TELEX-LONDON" No. 22617

Telephone: WOOLWICH 1223 (7 Lines)

Codes: A.B.C. 5th and 6th Edition; Bentley's; and Private Codes

All correspondence to:—

MATCHLESS MOTOR CYCLES, PLUMSTEAD ROAD, LONDON, S.E.18

---

**Price : THREE SHILLINGS AND SIXPENCE**

---

**(1) TERMS OF BUSINESS.**

**Our terms are:—** CASH WITH ORDER,  
CASH AGAINST PRO-FORMA INVOICE, OR  
APPROVED LEDGER ACCOUNT.

Customers who wish to avoid delay can open deposit accounts and the usual deposit is £5.

Orders from abroad should be accompanied by a remittance to cover the costs of goods and postal charges.

We do not send goods by "CASH ON DELIVERY" (C.O.D.).

**(2) PRICES AND SPECIFICATIONS.**

All prices, specifications and conditions are subject to alteration without notice. The prices of spares do not include the costs of packing and carriage.

**(3) CARRIAGE AND PACKING.**

All invoices or spare parts will be **SURCHARGED** by 5 PER CENT. to cover the cost of packing and postage, or carriage, and the minimum surcharge is one shilling. (Home orders only).

A special packing case, or crate, is required for some spares to ensure freedom from damage in transit. In such circumstances a special charge for the value of the case, or crate, will be made in addition to the 5 per cent. surcharge but the special charge will be credited in full if the container is promptly returned to our factory carriage paid and in good condition.

**(4) HOW TO ORDER SPARES.**

**STATE:—** (a) The Model of the machine.  
(b) The complete engine number. (See paragraph 5.)  
(c) The frame number. (See paragraph 5.)  
(d) The part of the spares required.  
(e) A description of each spare.  
(f) The quantity required of each item.  
(g) How the spares are to be sent. (Post, Parcels Post, Passenger train or Goods train.)  
(h) Your full name and address. These particulars are best written in **BLOCK LETTERS**.  
(i) Mention if, or not, you have an account with us.

**ALSO:—** Unless you have a deposit or ordinary account, enclose a remittance to cover the cost of the spares plus the 5 per cent. surcharge. (See paragraph 3.)

When cash is sent any excess will be refunded without prior application.

**NOTE:—** When sending orders by telegram or cable do not omit your name and address from the message.

**(5) IDENTITY.**

To ensure the supply of correct spares it is essential we can identify the machine for which they are required. The **ONLY WAY** to do that is for us to know the **COMPLETE ENGINE** and frame numbers.

The engine number is stamped on the left side crankcase, under the cylinder, and may have one or more letters incorporated in it. **THE COMPLETE NUMBER MUST BE QUOTED.**

The frame number is stamped on the right-hand side of the frame lug that is below the saddle.

**(6) SERVICE.**

The **SERVICE AND REPAIR DEPARTMENT** is situated in **BURRAGE GROVE, PLUMSTEAD, LONDON, S.E.18**, and is open on Mondays to Fridays from 8.30 a.m. to 12.55 p.m.—2 p.m. to 5.30 p.m. It is closed on Saturdays, Sundays and National Holidays.

It exists for the purpose of:—

- (a) Giving technical assistance verbally or through the Post.
- (b) Supplying spare parts over the counter or through the Post.
- (c) Repairing and re-conditioning machines, or parts of machines, of our make.

If it is considered necessary to bring a machine, or parts, to the factory for an urgent repair **IT IS ESSENTIAL** you make an appointment beforehand to avoid disappointment. This can be done by letter or telephone.

**(7) REPAIRS.**

The instructions regarding repairs should be clear and definite, otherwise the cost may be greater than that expected. We shall be pleased to give estimates for repairs if parts are sent to us for that purpose. If the estimate is accepted, no charge is made for the preliminary examination, but, should it be decided not to have the work carried out, it may be necessary to make a charge to cover the cost of whatever dismantling and re-assembly may have been done to prepare the estimate.

**(8) REPAIRS TO PROPRIETARY FITTINGS.**

We do not repair carburetters, chains, electrical equipment, saddles, sparking plugs, speedometers and tyres. On page 90 of the "**MAINTENANCE MANUAL AND INSTRUCTION BOOK**" will be found the names and addresses of the manufacturers of the proprietary equipment we fit, all of whom service and repair equipment they make.

**(9) PATTERNS.**

Parts sent to us as patterns, or for repair, should have attached to them a label bearing the sender's full name and address. The instructions regarding such parts should be sent under separate cover.

**(10) GUARANTEE.**

All parts made by us, and sold as spares, are subject to the same Limited Guarantee as that issued with each new motor cycle and that guarantee is printed in full on Page 97 of the "**MAINTENANCE MANUAL AND INSTRUCTION BOOK.**"

**(11) INSTRUCTION BOOK.**

A "**MAINTENANCE MANUAL AND INSTRUCTION BOOK**" has been compiled and published by us.

One copy is supplied free, upon application, with each new motor cycle. Replacement copies four shillings each.

**(12) CORRESPONDENCE.**

Our routine is organised into different departments. Therefore delay cannot be avoided if matters relating to more than one department are contained in one letter.

Consequently when communicating with more than one department it is desirable to do so on SEPARATE SHEETS. Each sheet should bear the sender's name and address. **IN PARTICULAR,** requests for TECHNICAL ADVICE should not be on the same sheets as ORDERS FOR SPARE PARTS.

MATCHLESS MOTOR CYCLES,  
PLUMSTEAD, LONDON, S.E.18.

THE PRICES OF SPARES DO NOT  
INCLUDE THE COST OF CARRIAGE

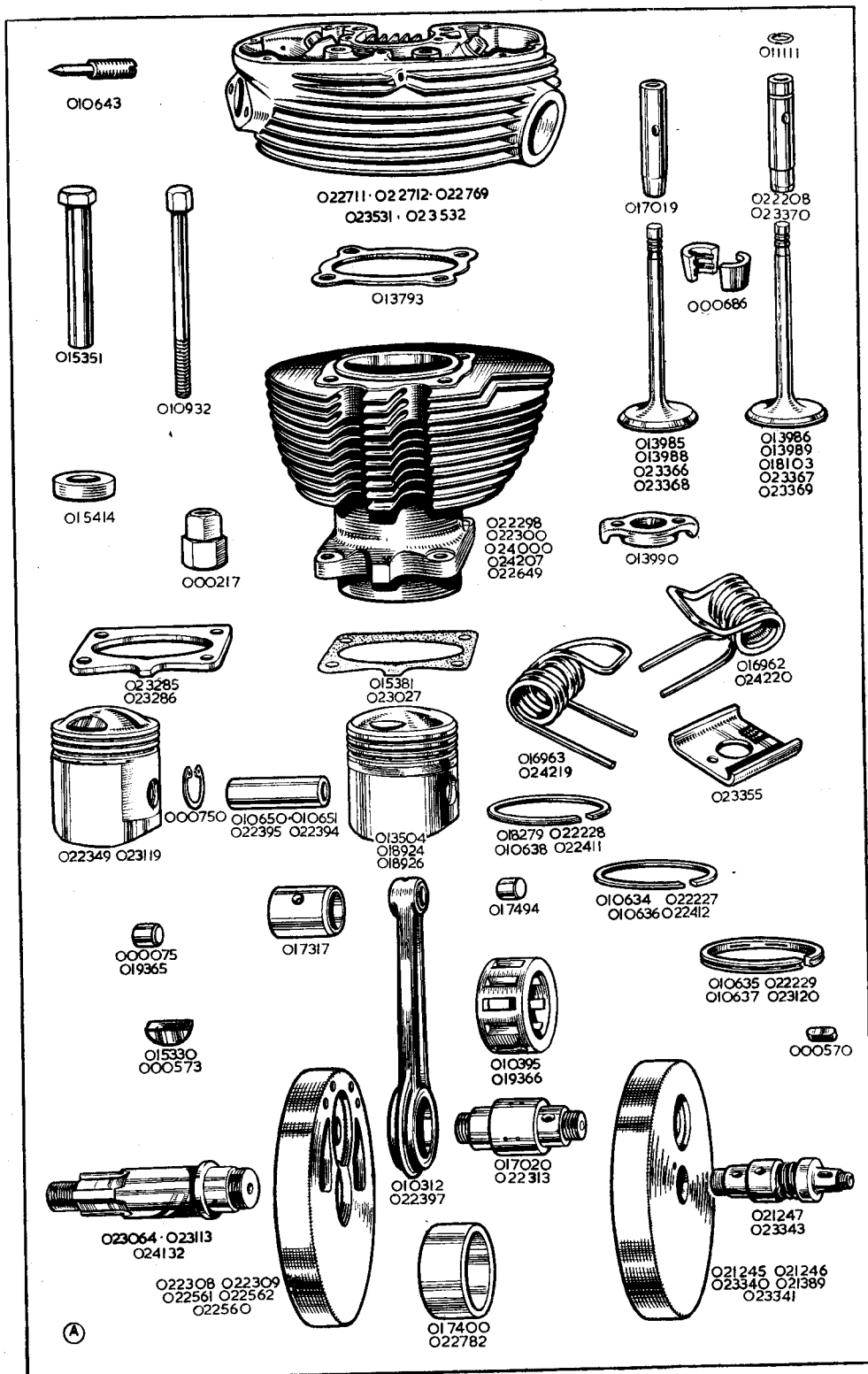
**N O T E**

The numbers, in brackets, that appear in the "Description" columns relate to the numbered foot notes regarding items so specially indicated.

The quantity per machine of each item are entered in the "Qty." columns. "R" indicates as may be required.

The illustrations are not to scale and are not necessarily accurate in detail.

Some items are not illustrated.



## ENGINE SECTION (SINGLE CYLINDER)

PART NUMBER	DESCRIPTION	QTY.	USED ON	PRICE EACH £ s. d.
<b>CYLINDERS</b>				
024000	... Barrel, cylinder .....	1	G3LS ...	...
024207	... Barrel, cylinder .....	1	G80S ...	...
023285	... Plate, compression, $\frac{1}{16}$ in. thick, not Std. fitting .....	1	G3LS ...	...
023286	... Plate, compression, $\frac{3}{8}$ in. thick, not Std. fitting.....	1	G80S ...	...
023027	... Washer, paper, cylinder base .....	1	G3LS, G80S ...	...
000217	... Nut, retaining cylinder to crankcase .....	4	G3LS, G80S ...	...
<b>CYLINDER HEADS</b>				
022711	... Head, cylinder with valve guides.....	1	G3LS ...	...
022712	... Head, cylinder, with valve guides .....	1	G80S ...	...
010643	... Screw, needle adjusting, inlet valve oil feed. (Screws into cylinder head).....	1	All ...	...
011373	... Nut, lock, needle adjusting screw .....	1	All ...	...
010932	... Bolt, securing head to barrel, $3\frac{3}{4}$ in. by $\frac{3}{8}$ in. by 20 ...	4	G3LS, G80S ...	...
000010	... Washer, plain, head securing bolt .....	4	G3LS, G80S ...	...
013793	... Gasket, for cylinder head .....	1	G3LS, G80S ...	...
000291	... Stud, fixing carburetter, 2 in. by $\frac{5}{16}$ in. by 22 by 26 ...	2	All ...	...
000004	... Nut, for carburetter fixing stud .....	2	All ...	...
<b>ENGINE VALVES</b>				
013985	... Valve, inlet .....	1	G3LS ...	...
013988	... Valve, inlet .....	1	G80S ...	...
013986	... Valve, exhaust .....	1	G3LS ...	...
013989	... Valve, exhaust .....	1	G80S ...	...
016963	... Spring, for valve, wide prong .....	2	G3LS, G80S ...	...
016962	... Spring, for valve, narrow prong .....	2	G3LS, G80S ...	...
013990	... Collar, for valve spring .....	2	All ...	...
023355	... Seat, for valve spring .....	2	All ...	...
000686	... Collet, for valve (each in two pieces).....	2	All ...	...
017019	... Guide, for inlet valve .....	1	All ...	...
022208	... Guide, for exhaust valve .....	1	G3LS, G80S ...	...
011111	... Circlip, for exhaust valve guide .....	1	All ...	...
<b>PISTONS</b>				
018925	... Piston, complete .....	1	G3LS ...	...
018927	... Piston, complete .....	1	G80S ...	...
018924	... Piston, bare .....	1	G3LS ...	...
018926	... Piston, bare .....	1	G80S ...	...
018279	... Ring, compression, $2\frac{3}{4}$ in. by $\frac{1}{16}$ in. (chrome plated)...	1	G3LS ...	...
010638	... Ring, compression, $3\frac{1}{4}$ in. by $\frac{1}{16}$ in. (chrome plated) ...	1	G80S ...	...
010634	... Ring, compression, $2\frac{3}{4}$ in. by $\frac{1}{16}$ in. ....	1	G3LS ...	...
010636	... Ring, compression, $3\frac{1}{4}$ in. by $\frac{1}{16}$ in. ....	1	G80S ...	...
010635	... Ring, scraper, $2\frac{3}{4}$ in. by $\frac{1}{8}$ in. ....	1	G3LS ...	...
010637	... Ring, scraper, $3\frac{1}{4}$ in. by $\frac{1}{8}$ in. ....	1	G80S ...	...
010650	... Pin, gudgeon .....	1	G3LS ...	...
010651	... Pin, gudgeon .....	1	G80S ...	...
000750	... Circlip, for gudgeon pin .....	2	All ...	...
<p>"Piston, complete" includes—Piston, one ordinary compression ring, one chrome plated compression ring, one scraper ring, gudgeon pin and two circlips.</p> <p>The following oversize parts can be supplied:—</p>				
018948	... Piston, complete, .020 oversize .....	1	G3LS ...	...
018949	... Piston, complete, .040 oversize .....	1	G3LS ...	...
018950	... Piston, complete, .020 oversize .....	1	G80S ...	...
021392	... Piston, complete, .040 oversize .....	1	G80S ...	...
018929	... Piston, bare, .020 oversize .....	1	G3LS ...	...
018930	... Piston, bare, .040 oversize .....	1	G3LS ...	...
018932	... Piston, bare, .020 oversize .....	1	G80S ...	...
021391	... Piston, bare, .040 oversize .....	1	G80S ...	...

PART NUMBER	DESCRIPTION	QTY.	USED ON	PRICE EACH £ s. d.
-------------	-------------	------	---------	-----------------------

### PISTONS—continued

018280	... Ring, compression, $2\frac{3}{32}$ in. plus .020 in. by $\frac{1}{16}$ in. (chrome plated)	1	G3LS	...
018281	... Ring, compression, $2\frac{3}{32}$ in. plus .040 in. by $\frac{1}{16}$ in. (chrome plated)	1	G3LS	...
016443	... Ring, compression, $2\frac{3}{32}$ in. plus .020 in. by $\frac{1}{16}$ in.	1	G3LS	...
016444	... Ring, compression, $2\frac{3}{32}$ in. plus .040 in. by $\frac{1}{16}$ in.	1	G3LS	...
016445	... Ring, scraper, $2\frac{3}{32}$ in. plus .020 in. by $\frac{1}{8}$ in.	1	G3LS	...
016446	... Ring, scraper, $2\frac{3}{32}$ in. plus .040 in. by $\frac{1}{8}$ in.	1	G3LS	...
016449	... Ring, compression, $3\frac{1}{4}$ in. plus .020 in. by $\frac{1}{16}$ in. (chrome plated)	1	G80S	...
016450	... Ring, compression, $3\frac{1}{4}$ in. plus .040 in. by $\frac{1}{16}$ in. (chrome plated)	1	G80S	...
013661	... Ring, compression, $3\frac{1}{4}$ in. plus .020 in. by $\frac{1}{16}$ in.	1	G80S	...
016447	... Ring, compression, $3\frac{1}{4}$ in. plus .040 in. by $\frac{1}{16}$ in.	1	G80S	...
013662	... Ring, scraper, $3\frac{1}{4}$ in. plus .020 in. by $\frac{1}{8}$ in.	1	G80S	...
016448	... Ring, scraper, $3\frac{1}{4}$ in. plus .040 in. by $\frac{1}{8}$ in.	1	G80S	...

### RE-BORING

Cylinders may be re-bored to .020 in. or to .040 in. oversize and normal compression pistons (with rings) (one chrome plated) supplied to suit.

G3LS Model £3 1s. 10d. (New gudgeon pins and circlips 9s. 2d. extra).

G80S Model £3 14s. 10d. (New gudgeon pins and circlips 9s. 8d. extra).

Cylinders sent for re-boring should be packed in stout cases which will be used by us for their return. Carriage is additional. If a complete machine, or engine, is sent to us for cylinder re-boring, there will be an additional charge, according to the time taken, for dismantling and assembly.

### FLYWHEELS

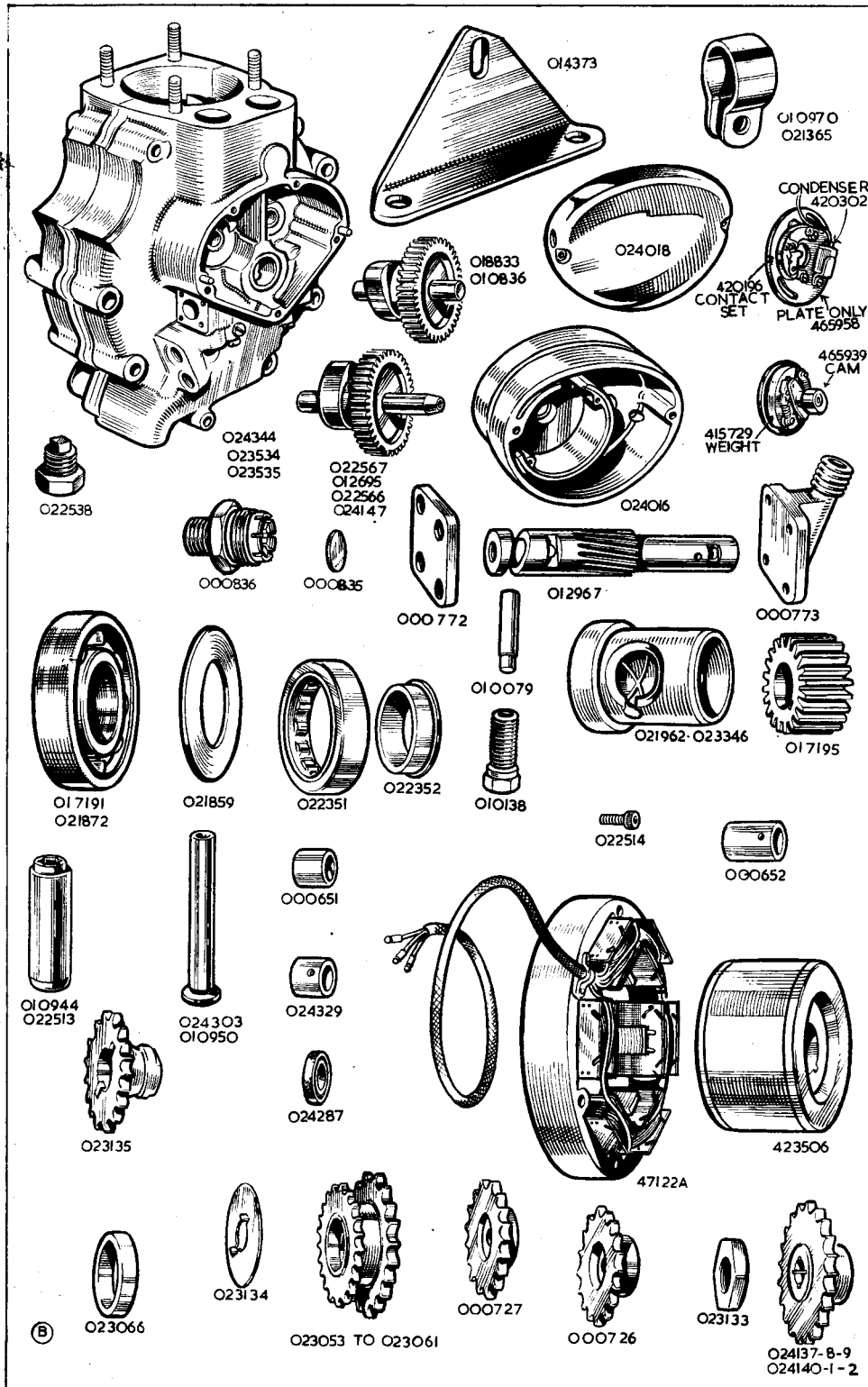
022560	... Flywheel, bare, driving side	1	G3LS	...
022561	... Flywheel, bare, driving side	1	G80S	...
021245	... Flywheel bare, timing side	1	G3LS	...
021246	... Flywheel, bare, timing side	1	G80S	...
021247	... Axle, timing side flywheel	1	G3LS, G80S	...
024132	... Axle, driving side flywheel	1	G3LS, G80S	...
000573	... Key, driving side flywheel axle	2	All	...
021249	... Nut, timing side flywheel axle	1	G3LS, G80S	...
000234	... Nut, driving side flywheel axle	1	G3LS, G80S	...

### CONNECTING ROD

010312	... Rod, connecting with liner and bush	1	G3LS, G80S	...
017400	... Liner for big-end bearing	1	G3LS, G80S	...
017317	... Bush, for gudgeon pin	1	All	...
017020	... Crankpin, only	1	G3LS, G80S	...
000075	... Roller, for Crankpin, $\frac{1}{4}$ in. by $\frac{1}{4}$ in.	30	G3LS, G80S	...
010395	... Cage, for crankpin rollers	1	G3LS, G80S	...
000233	... Nut, for crankpin	2	G3LS, G80S	...

### CRANKCASE

024344	... Crankcase, complete (1)	1	G3LS, G80S	...
024346	... Crankcase, driving side only (4) (6)	1	G3LS, G80S	...
022710	... Crankcase, timing side only (5) (6)	1	G3LS, G80S	...
022538	... Filter, magnetic	1	All	...
000182	... Washer, magnetic filter	1	All	...
000485	... Screw, plug, for crankcase oil holes, $\frac{1}{4}$ in. by $\frac{1}{4}$ in. by 26	3	All	...
000203	... Washer, fibre, for oil hole screws	3	All	...
000300	... Stud, for cylinder base, $1\frac{3}{32}$ in. by $\frac{3}{8}$ in. by 26 and 20	4	G3LS, G80S	...
000577	... Peg, dowel, locating timing gear cover	2	All	...
024016	... Timing case	1	G3LS, G80S	...
017182	... Washer, paper, for timing gear cover	1	All	...
000482	... Screw, fixing timing gear cover, $1\frac{1}{16}$ in. by $\frac{1}{4}$ in. by 26	5	All	...
000765	... Cap, in timing gear cover, for cam bush	1	All	...
024018	... Cover, timing case	1	G3LS, G80S	...
000453	... Screw, fixing timing case	2	G3LS, G80S	...
024159	... Grommet, timing case cover	1	G3LS, G80S	...



PART NUMBER	DESCRIPTION	QTY.	USED ON	PRICE EACH £ s. d.
<b>CRANKCASE—continued</b>				
000486	Plug, oil return .....	1	All	...
Note 1	Comprises 024346 and 022710.			
Note 4	Comprises crankcase half and two cylinder base studs.			
Note 5	Comprises crankcase half, bush for timing side flywheel axle with peg, two camshaft bushes, two cylinder base studs and two dowel pins for timing gear cover.			
Note 6	Halves of crankcase must be "matched" in the Factory. Therefore, it is necessary to send the sound half of a crankcase when ordering a new half.			
<b>CRANKCASE BEARINGS</b>				
021962	Bush, timing side flywheel axle .....	1	G3LS, G80S	...
012233	Peg, securing timing side bush.....	1	All	...
021872	Ball bearing, inner, for driving side axle, 1 in. by 2½ in. by ¾ in.....	1	All	...
017191	Ball bearing, outer, for driving side axle, 1 in. by 2¼ in. by ⅝ in.....	1	All	...
021859	Washer, spacing, between ball bearings.....	1	All	...
000651	Bush, for exhaust cam, in crankcase .....	1	All	...
000651	Bush, for exhaust cam, in timing case.....	1	H3LS, G80S	...
000651	Bush, for inlet cam, in crankcase.....	1	All	...
024329	Bush, for inlet cam, in timing case.....	1	G3LS, G80S	...
024287	Seal, oil, for inlet cam, in timing case.....	1	G3LS, G80S	...
<b>ENGINE PLATES AND CRANKCASE BOLTS, SINGLES</b>				
024208	Engine plates, front, bare .....	2	G3LS, G80S	...
024019	Engine plates, rear, bare .....	2	G3LS, G80S	...
024252	Cover, for engine plates .....	1	G3LS, G80S	...
000277	Stud, crankcase, bottom front .....	1	All	...
000288	Stud, crankcase, bottom rear .....	1	All	...
000303	Stud, front engine plates (through frame).....	1	G3LS, G80S	...
000278	Stud, front engine plates, top .....	1	G3LS, G80S	...
000278	Stud, front engine, plates, bottom .....	1	All	...
000278	Stud, rear engine plates (through crankcase), top.....	1	All	...
014147	Stud, rear engine plates (through crankcase), bottom...	1	All	...
024276	Stud, rear engine plates, centre .....	1	G3LS, G80S	...
000004	Nut, for ⅝ in. studs .....	11	All	...
000003	Nut, for ⅜ in. stud .....	2	All	...
000011	Washer, for ⅝ in. stud .....	11	All	...
000010	Washer, for ⅜ in. stud .....	2	All	...
000002	Nut, for centre stud .....	2	All	...
000009	Washer, for centre stud .....	2	All	...
<b>OIL PUMP</b>				
012967	Plunger, oil pump .....	1	All	...
010138	Screw, guide, oil pump plunger .....	1	All	...
010079	Pin, guide screw, oil pump plunger.....	1	All	...
000773	Cap, front end, oil pump .....	1	All	...
000772	Cap, rear end oil pump.....	1	All	...
000582	Washer, paper, pump end cap.....	2	All	...
000015	Screw, fixing front end cap, oil pump, ⅜ in. by 3 BA ...	4	All	...
000591	Bolt, fixing rear end cap, oil pump, ⅜ in. by 3 BA .....	4	All	...
<b>RELEASE VALVE</b>				
000836	Body, release valve.....	1	All	...
000835	Diaphragm, for release valve .....	1	All	...
<b>TIMING GEAR</b>				
012695	Camshaft, exhaust .....	1	G3LS, G80S	...
016847	Washer, shim, .005 in. thick, for exhaust camshaft .....	R	All	...
016848	Washer, shim, .010 in. thick, for exhaust camshaft .....	R	All	...
024147	Camshaft, inlet .....	1	G3LS, G80S	...
017195	Pinion, timing, on flywheel axle .....	1	All	...
000570	Key, for timing pinion .....	1	All	...
000221	Nut, retaining timing pinion to axle (left hand thread)	1	All	...



PART NUMBER	DESCRIPTION	QTY.	USED ON	PRICE EACH £ s. d.
-------------	-------------	------	---------	-----------------------

### TAPPETS

010950	... Tappet, bare .....	2	G3LS, G80S	...
010944	... Guide, for tappet .....	2	G3LS, G80S	...

### PUSH RODS

018314	... Rod, long, push, complete (8) .....	2	G3LS	... ..
018315	... Rod, long, push, complete (8) .....	2	G80S	... ..
018168	... Rod, long, push, bare.....	2	G3LS	... ..
015511	... Rod, long, push, bare.....	2	G80S	... ..
000721	... End, ball, bottom of long push rod.....	2	All	... ..
018266	... Sleeve, tapped, top of long push rod .....	2	All	... ..
000592	... Screw, adjusting, top of long push rod .....	2	All	... ..
000216	... Nut, push rod adjusting screw.....	2	All	... ..

Note 8 ... " ROD, LONG, PUSH, COMPLETE " comprises—one long push rod with sleeve end, one bottom, ball end and one adjusting screw with lock nut.

### PUSH ROD COVER TUBES

022288	... Tube, cover, for long push rod .....	2	G3LS, G80S	...
010672	... Gasket, rubber, top of cover tube .....	2	G3LS, G80S	...
016944	... Washer, metal, $\frac{3}{64}$ in. thick, located below 010672 .....	2	G3LS, G80S	...
011087	... Washer, metal, $\frac{3}{64}$ in. thick, located over 010672.....	2	G3LS, G80S	...
011087	... Washer, metal, $\frac{3}{64}$ in. thick, located over 010672 when compression plate fitted (two in each location) .....	4	G3LS	... ..
014603	... Washer, metal, $\frac{1}{8}$ in. thick, located over 010672 when compression plate fitted .....	2	G80S	... ..
000691	... Gland, rubber, bottom of cover tube.....	2	All	... ..

### ROCKER BOX

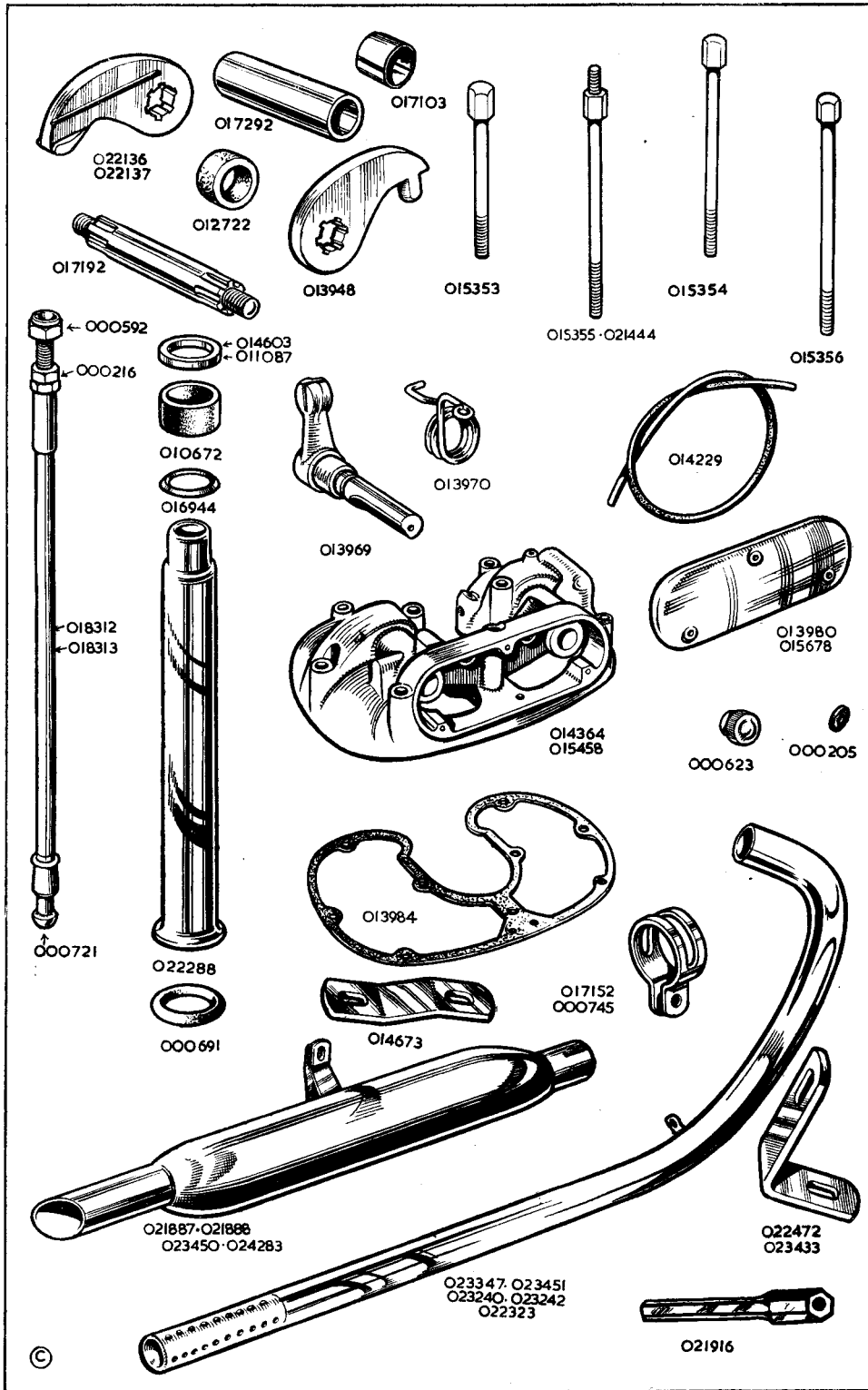
022142	... Rocker box, assembled (10) .....	1	G3LS, G80S	...
014364	... Rocker box, with bushes (11) .....	1	G3LS, G80S	...
013958	... Rocker box, bare .....	1	G3LS, G80S	...
013984	... Gasket, for rocker box .....	1	All	... ..
017103	... Bush, for rocker box .....	4	All	... ..
013980	... Cover, side, for rocker box .....	1	G3LS, G80S	...
018890	... Plugs, metering .....	3	All	... ..
014229	... Fillet, rubber, rocker box side cover .....	1	All	... ..
000251	... Stud, fixing rocker box side cover .....	3	All	... ..
000623	... Nut, for rocker box side cover stud .....	3	All	... ..
000205	... Washer, fibre, for rocker box side cover stud .....	3	All	... ..
000508	... Union, oil, in rocker box .....	1	All	... ..
015353	... Bolt, fixing rocker box, short, $1\frac{1}{8}$ in. by $\frac{5}{16}$ in. by 22...	4	All	... ..
015354	... Bolt, fixing rocker box, long, $2\frac{1}{8}$ in. by $\frac{5}{16}$ in. by 22...	2	All	... ..
015355	... Bolt, fixing rocker box, long, $2\frac{3}{4}$ in. by $\frac{5}{16}$ in. by 22 with extension $\frac{5}{16}$ in. by 26 .....	2	G3LS, G80S	...
021444	... Bolt, fixing rocker box, with extension.....	2	...	...
015356	... Bolt, fixing rocker box, centre position, $3\frac{5}{8}$ in. by $\frac{5}{16}$ in. by 22.....	1	All	... ..
000011	... Washer, plain, rocker box fixing bolts .....	9	All	... ..

Note 10 ... Includes all parts listed in this paragraph (except gasket, fixing bolts and washers), and all those listed under " OVERHEAD ROCKERS " and " EXHAUST VALVE LIFTER ".

Note 11 ... This is a " bare " rocker box to which is fitted four 017103 bushes, two 012722 felt rings and oil metering plugs 018890.

### OVERHEAD ROCKERS

017192	... Axle, rocker .....	2	All	... ..
017292	... Sleeve, for rocker axle .....	2	All	... ..
022136	... Arm, rocker, valve end, inlet .....	1	All	... ..
022137	... Arm, rocker, valve end, exhaust .....	1	All	... ..
013948	... Arm, rocker, tappet end, inlet and exhaust .....	2	All	... ..
000010	... Washer, plain, for rocker axle.....	4	All	... ..
000003	... Nut, for rocker axle .....	4	All	... ..
012722	... Ring, felt, for rocker axle sleeve .....	2	All	... ..



PART NUMBER	DESCRIPTION	QTY.	USED ON	PRICE EACH £ s. d.
-------------	-------------	------	---------	-----------------------

### EXHAUST VALVE LIFTER

013969	... Lever, exhaust lifter .....	1	All	...
014523	... Ring, sealing, for valve lifter lever .....	1	All	...
013970	... Spring, for valve lifter lever .....	1	All	...
000451	... Screw, anchor valve lifter spring, $\frac{1}{2}$ in. by 2 BA .....	1	All	...
000039	... Washer, plain valve lifter spring screw .....	1	All	...

### ROCKER BOX STAY

014373	... Stay, for rocker box .....	1	All	...
000004	... Nut, fixing stay to rocker box bolt extension .....	2	All	...
000011	... Washer, plain, rocker box bolt extension .....	2	All	...
010970	... Clip, for rocker box stay .....	1	All except G3CT	...
000364	... Bolt, for rocker box stay clip, $\frac{1}{16}$ in. by $\frac{5}{16}$ in. by 26 ...	1	All	...
000011	... Washer, plain, rocker box stay clip bolt .....	1	All	...
000004	... Nut, forker box stay clip bolt .....	1	All	...
000011	... Washer, rocker box stay .....	R	All	...

### GASKETS

Engine gaskets are supplied as separate spares and in complete sets.  
Single gaskets are listed in the groups to which they belong.  
Gaskets in sets are listed in page 56.

## EXHAUST PIPE AND SILENCER SECTION (SINGLE CYLINDER)

PART NUMBER	DESCRIPTION	QTY.	USED ON	PRICE EACH £ s. d.
-------------	-------------	------	---------	-----------------------

### EXHAUST PIPES

023447	... Pipe, exhaust, bare .....	1	G3LS	...
022323	... Pipe, exhaust, bare .....	1	G80S	...
021916	... Support, for exhaust pipe .....	1	G3LS, G80S	...
000362	... Bolt, for exhaust pipe support .....	1	G3LS, G80S	...
000192	... Washer, spring, for support bolt .....	1	G3LS, G80S	...
000011	... Washer, plain, support fixing bolt .....	1	G3LS, G80S	...

### SILENCERS

021887	... Silencer, bare .....	1	G3LS	...
021888	... Silencer, bare .....	1	G80S	...
016768	... Bolt, silencer to frame .....	1	G3LS, G80S	...
000004	... Nut, silencer to frame bolt .....	1	G3LS, G80S	...
000011	... Washer, plain, silencer to frame bolt .....	1	G3LS, G80S	...
000192	... Washer spring, silencer to frame bolt .....	1	G3LS, G80S	...
017152	... Clip, clamping silencer to exhaust pipe .....	1	All 350	...
000745	... Clip, clamping silencer to exhaust pipe .....	1	All 500	...
000363	... Bolt, for silencer clip .....	1	All	...
000174	... Washer, for silencer clip bolt .....	1	All	...
000004	... Nut, for silencer clip bolt .....	1	All	...

## ENGINE SECTION (TWIN CYLINDER)

PART NUMBER	DESCRIPTION	QTY.	USED ON	PRICE EACH £ s. d.
-------------	-------------	------	---------	-----------------------

### CRANKCASE

024345	... Crankcase, complete (1) .....	1	All	...
024347	... Crankcase, driving side only (2) .....	1	All	...
022662	... Crankcase, timing side only (3) .....	1	All	...

PART NUMBER	DESCRIPTION	QTY.	USED ON	PRICE EACH £ s. d.
-------------	-------------	------	---------	-----------------------

**CRANKCASE—continued**

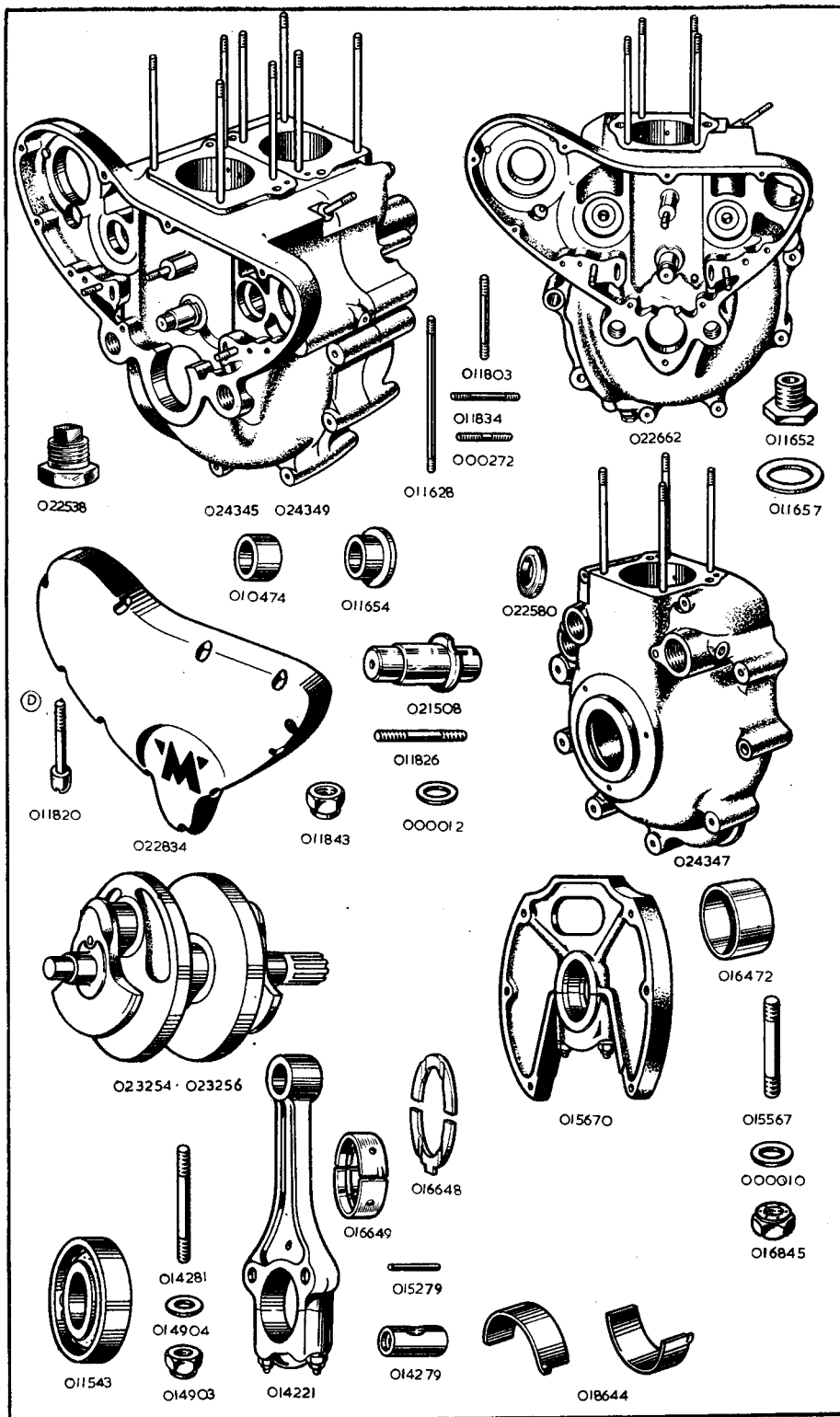
015670	... Web, centre, with cap, studs, washers and nuts (no bearing and thrust washers).....	1	All	...
022834	... Cover, for timing gear .....	1	All	...
011826	... Stud, fixing centre web, $1\frac{1}{8}$ in. by $\frac{1}{4}$ in. by 26 and 20...	6	All	...
000012	... Washer, plain, for centre web top fixing studs.....	2	All	...
000012	... Washer, plain, for centre web centre fixing studs .....	2	All	...
000012	... Washer, plain, for centre web bottom fixing studs .....	2	All	...
011843	... Nut, for centre web fixing studs.....	6	All	...
015667	... Stud, for for centre web bearing cap, $2\frac{1}{8}$ in. by $\frac{5}{8}$ in. by 20 and 20 .....	2	All	...
000010	... Washer, plain, for centre web bearing cap stud .....	2	All	...
016845	... Nut, for centre web bearing cap stud .....	2	All	...
011628	... Stud, in driving side crankcase, for cylinder and head, $5\frac{7}{8}$ in. by $\frac{5}{16}$ in. by 26 and 22 .....	4	All	...
011628	... Stud, in timing side crankcase, for cylinder and head, $5\frac{7}{8}$ in. by $\frac{5}{16}$ in. by 26 and 22 .....	4	All	...
011834	... Stud, in timing side crankcase, for pump carrying plate, $1\frac{5}{8}$ in. by $\frac{5}{16}$ in. by 26 and 22.....	3	All	...
000272	... Stud, in timing side crankcase, for fixing magneto, $1\frac{1}{2}$ in. by $\frac{5}{16}$ in. by 26 and 22.....	2	All	...
011803	... Stud, in timing side crankcase, for dynamo strap, $1\frac{1}{8}$ in. by $\frac{1}{4}$ in. by 26 and 20 .....	1	All	...
021508	... Shaft, in timing side crankcase, for intermediate gear...	1	All	...
011820	... Screw, retaining timing gear cover.....	10	All	...
011652	... Adaptor, to accommodate oil feed and return pipe retaining banjo pins. (Screws into timing side crankcase) .....	2	All	...
011657	... Washer, fibre, for banjo pin adaptors.....	2	All	...
010474	... Bush, plain, for camshafts. (In driving side crankcase)	2	All	...
011654	... Bush, flanged, for camshafts. (In timing side crankcase)	4	All	...
016472	... Tunnel, for camshaft chamber (fits between crankcase halves) .....	2	All	...
011648	... Cap, in crankcase housing for inlet camshaft.....	1	All	...
023106	... Washer, fibre, for crankcase housing cap .....	1	All	...

1.—Includes:—Driving crankcase. Timing crankcase, centre web with studs (no bearing and washers). Bushes for camshaft. Cylinder studs. Shaft for intermediate gear. Cam follower spindles. Studs for pump plate. Two magneto studs. Dynamo strap stud. Timing gear cover and screws. Three bolts. One stud. Two nuts. Five washers.

2.—Includes:—Two camshaft bushes. Four cylinder studs. Cam follower spindles. Six studs for centre web.

3.—Includes:—Four camshaft bushes. Four cylinder studs. Shaft for intermediate gear. Three studs for pump plate. Two studs for magneto. One stud for dynamo strap. (No timing gear cover and screws.)

WHEN IN DOUBT REGARDING THE NAMES AND PART NUMBERS OF THE PARTS YOU REQUIRE, PLEASE SEND THE OLD PARTS TO SERVE AS PATTERNS



PART NUMBER	DESCRIPTION	QTY.	USED ON	PRICE EACH £ s. d.
-------------	-------------	------	---------	-----------------------

### CRANKSHAFT, CONNECTING RODS AND BEARINGS

023254	... Crankshaft, plugged, but bare	1	G9	...
023256	... Crankshaft, plugged, but bare	1	G11	...
016649	... Bearing, plain, for centre bearing (in halves)....per pair	1	All	...
016648	... Washer, thrust, for centre bearing	2	All	...
011543	... Bearing, roller, for crankshaft. (Parts of this bearing are not sold separately), $1\frac{3}{8}$ in. internal, 3 in. external, $\frac{11}{16}$ in. wide. Manufacturers part number RLS-12 $\frac{1}{2}$ ....	2	All	...
014221	... Connecting rod assembly. (No big end bearing)	2	All	...
014281	... Stud, for connecting rod, $2\frac{3}{32}$ in. by $\frac{5}{16}$ in. by 26	4	All	...
014279	... Trunnion, for connecting rod	4	All	...
015279	... Rivet, locating connecting rod stud	4	All	...
014904	... Washer, plain, for connecting rod stud	4	All	...
014903	... Nut, for connecting rod stud	4	All	...
018644	... Bearing, plain, for connecting rod, top or bottom half each half	4	All	...

The following undersize bearings can be supplied: It is necessary to have the journals ground to suit.

016670	... Bearing, plain, for centre bearing, .010 in. undersize (2 halves)	1	All	...
016671	... Bearing, plain, for centre bearing, .020 in. undersize (2 halves)	1	All	...
016672	... Bearing, plain, for centre bearing, .030 in. undersize (2 halves)	1	All	...
018564	... Bearing, plain, for connecting rod, .010 in. undersize, top or bottom, each half	4	All	...
018565	... Bearing, plain, for connecting rod, .020 in. undersize, top or bottom, each half	4	All	...
018566	... Bearing, plain, for connecting rod, .030 in. undersize, bottom, each half	4	All	...

### CYLINDERS, PISTONS, HEADS AND VALVES

022230	... Cylinder, barrel only	2	G9	...
022231	... Cylinder, barrel only	2	G11	...
022233	... Washer, paper, for cylinder base	2	All	...
022598	... Piston, bare, normal size	2	G9	...
022226	... Piston, bare, normal size	2	G11	...
022669	... Piston, bare, .020 in. oversize	2	G9	...
022670	... Piston, bare, .020 in. oversize	2	G11	...
022671	... Piston, bare, .040 in. oversize	2	G9	...
022672	... Piston, bare, .040 in. oversize	2	G11	...
022663	... Piston, complete, normal size	2	G9	...
022664	... Piston, complete, normal size	2	G11	...
022665	... Piston, complete, .020 in. oversize	2	G9	...
022666	... Piston, complete, .020 in. oversize	2	G11	...
022667	... Piston, complete, .040 in. oversize	2	G9	...
022668	... Piston, complete, .040 in. oversize	2	G11	...

The above complete pistons include:—

Piston, two compression rings (1 chrome plated), one scraper ring.  
Gudgeon pin, two circlips for gudgeon pin.

018297	... Ring, compression, chrome plated, normal size	2	G9	...
022228	... Ring, compression, chrome plated, normal size	2	G11	...
018298	... Ring, compression, chrome plated, .020 in. oversize	2	G9	...
022315	... Ring, compression, chrome plated, .020 in. oversize	2	G11	...
018299	... Ring, compression, chrome plated, .040 in. oversize	2	G9	...
022316	... Ring, compression, chrome plated, .040 in. oversize	2	G11	...
010631	... Ring, compression, normal size	2	G9	...
022227	... Ring, compression, normal size	2	G11	...
015522	... Ring, compression, .020 in. oversize	2	G9	...
022317	... Ring, compression, .020 in. oversize	2	G11	...
016441	... Ring, compression, .040 in. oversize	2	G9	...
022318	... Ring, compression, .040 in. oversize	2	G11	...
018366	... Ring, scraper, normal size	2	G9	...
022229	... Ring, scraper, normal size	2	G11	...
022677	... Ring, scraper, .020 in. oversize	2	G9	...
022319	... Ring, scraper, .020 in. oversize	2	G11	...
022679	... Ring, scraper, .040 in. oversize	2	G9	...

PART NUMBER	DESCRIPTION	QTY.	USED ON	PRICE EACH £ s. d.
<b>CYLINDERS, PISTONS, HEADS AND VALVES—continued</b>				
022320	... Ring, scraper, .040 in. oversize	2	G11	...
011731	... Pin, gudgeon	2	G9	...
022277	... Pin, gudgeon	2	G11	...
014283	... Circlip, gudgeon pin	4	All	...
023019	... Head, for cylinder, with valve guides, valve guide circlips and manifold studs, left	1	G9	...
023582	... Head, for cylinder, with valve guides, valve guide circlips and manifold studs, right	1	G11	...
023020	... Head, for cylinder, with valve guides, valve guide circlips and manifold studs, right	1	G9	...
023581	... Head, for cylinder, with valve guides, valve guide circlips and manifold studs, left	1	G11	...
022236	... Gasket, for cylinder head	2	All	...
014163	... Valve, inlet	2	G9	...
023403	... Valve, inlet	2	G11	...
014165	... Valve, exhaust	2	All	...
024131	... Spring, inner, for valve	4	All	...
011769	... Spring, outer, for valve	4	All	...
014169	... Seat, for valve spring	4	All	...
014168	... Collar, for valve spring	4	All	...
014167	... Collet, for valve stems (in pairs)	4	All	...
014170	... Guide, for inlet valves	2	All	...
014171	... Guide, for exhaust valves	2	All	...
011111	... Circlip, locating valve guides	4	All	...
011634	... Spacer, $\frac{3}{32}$ in. long, for head retaining nuts	8	All	...
000004	... Nut, retaining cylinders and heads	8	All	...
000011	... Washer, plain, for head retaining nuts	8	All	...
010625	... Stud, retaining inlet manifold, $1\frac{1}{16}$ in. by $\frac{1}{4}$ in. by 26 and 20	4	All	...
014352	... Bush, for rocker spindle	4	All	...

### RE-BORING

Cylinders may be re-bored to .020 in. or to .040 in. oversize and normal compression pistons (with rings) (two chrome plated) supplied to suit.

G9 Model £6 11s. 10d. per pair. (New gudgeon pins and circlips 14s. 0d. extra).

G11 Model £6 13s. 4d. per pair. (New gudgeon pins and circlips 14s. 0d. extra).

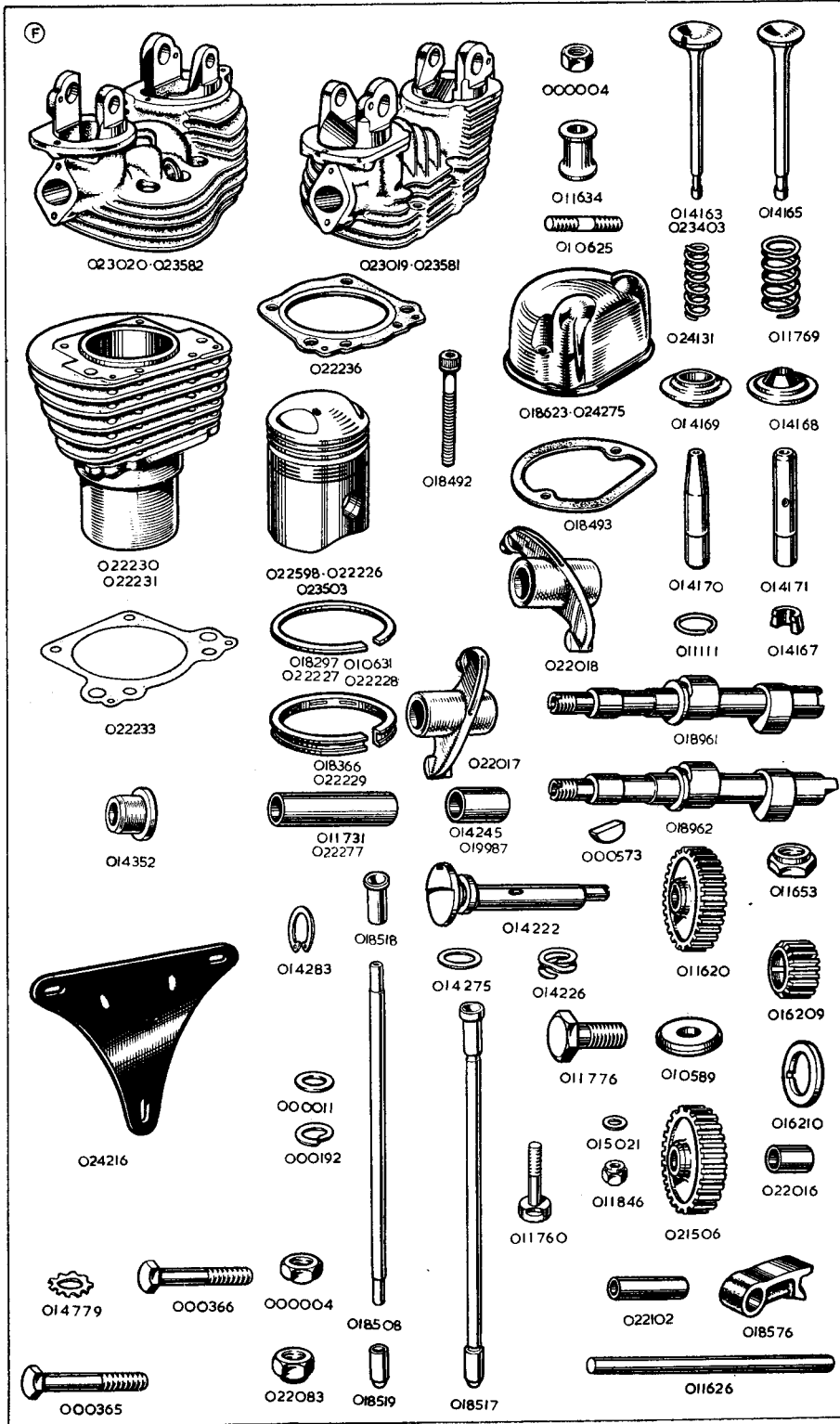
Cylinders sent for re-boring should be packed in stout cases which will be used by us for their return. Carriage is additional. If a complete machine, or engine, is sent to us for cylinder re-boring, there will be an additional charge, according to the time taken, for dismantling and assembly.

### TIMING GEAR

018961	... Camshaft, inlet	1	All	...
018962	... Camshaft, exhaust	1	All	...
011620	... Gear, on camshaft, 60 teeth	2	All	...
000573	... Key, locating camshaft gears	2	All	...
011653	... Nut, retaining camshaft gears	2	All	...
016209	... Pinion, on crankshaft, 30 teeth	1	All	...
016210	... Spacer, $\frac{7}{32}$ in. long, for crankshaft pinion	1	All	...
000573	... Key, locating crankshaft pinion	1	All	...
011776	... Bolt, retaining crankshaft pinion, threaded $\frac{1}{2}$ in. by 20...	1	All	...
010589	... Washer, plain, for crankshaft pinion bolt	1	All	...
021506	... Gear, intermediate, with bush, 60 teeth	1	All	...
022016	... Bush, for intermediate gear	1	All	...
018576	... Follower, for camshaft	4	All	...
011626	... Spindle, for camshaft followers	2	All	...
022102	... Spacer, $1\frac{1}{32}$ in. long between camshaft followers	2	All	...

### ROCKERS AND PUSH RODS

022017	... Rocker, with bushes (left inlet and right exhaust)	2	All	...
022018	... Rocker, with bushes (right inlet and left exhaust)	2	All	...
014222	... Spindle, for rockers	4	All	...
014226	... Washer, spring, double coil, for rocker spindle	4	All	...
014275	... Washer, plain, for either side of rocker spindle spring washer	8	All	...
014275	... Washer, plain, for clamping end of rocker spindle	4	All	...
011760	... Bolt, clamping rocker spindle. (Thread No. 2 BA)	4	All	...





PART NUMBER	DESCRIPTION	QTY.	USED ON	PRICE EACH £ s. d.
-------------	-------------	------	---------	-----------------------

### ROCKERS AND PUSH RODS—*continued*

015021	Washer, plain, for rocker spindle clamping bolt	4	All	...
011846	Nut, for rocker spindle clamping bolt	4	All	...
014245	Bush, for rockers. (One in each rocker)	4	All	...
019987	Bush for rockers. (One in each rocker)	4	All	...
024275	Cover, for rockers	4	G9, G11	...
018493	Gasket, for rocker covers	4	All	...
018492	Screw, retaining rocker covers	8	All	...
018517	Rod, push, assembled with ends	4	All	...
018508	Rod, push, bare	4	All	...
018518	End, upper, for push rod	4	All	...
018519	End, lower, for push rod	4	All	...

### ENGINE STEADY STAY

024216	Plate, engine steady	1	All	...
000365	Bolt, securing rear of steady stay, $1\frac{1}{16}$ in. by $\frac{5}{16}$ in. by 26	2	All	...
000192	Washer, spring, for steady stay frame front bolt	1	All	...
014779	Washer, lock, for steady stay frame front bolt	1	All	...
022083	Nut, for steady stay rear bolt	2	All	...
000366	Bolt, securing steady stay to frame, $1\frac{1}{2}$ in. by $\frac{5}{16}$ in. by 26	1	All	...
000004	Nut, for steady stay to frame securing bolt	1	All	...
000011	Washer, plain, under heads of rear bolts	2	All	...
000192	Washer, spring, for rear bolts	2	All	...

### OIL PUMPS

018037	Oil pumps, complete, assembled on carrying plate (4)	1	All	...
015017	Plate, carrying, oil pumps, bare (5)	1	All	...
014903	Nut, securing pump carrying plate to timing side crankcase	3	All	...
000011	Washer, plain, for pump carrying plate fixing nuts	3	All	...
000021	Ball, $\frac{1}{2}$ in. steel, for return pump bleed valve	1	All	...
000701	Spring, for return pump bleed valve ball	1	All	...
015001	Screw, securing return pump bleed valve spring. (Grub screw, $\frac{1}{4}$ in. long by $\frac{1}{16}$ in. by 22)	1	All	...
016137	Gasket, oval, behind pump carrying plate	2	All	...
016138	Gasket, round, behind pump carrying plate	1	All	...
015568	Body, oil feed pump, for $\frac{1}{4}$ in. gears with $\frac{7}{16}$ in. shaft	1	All	...
015599	Pin, dowel, for oil feed pump	2	All	...
015576	Plate, front end, for oil pump feed body	1	All	...
015573	Plate, back end, for oil pump feed body	1	All	...
011617	Washer, paper, between oil feed pump and carrying plate	1	All	...
000453	Screw, retaining oil feed pump to carrying plate. 1 in. by 2 BA	3	All	...
015579	Gear, driving, for oil feed pump, $\frac{1}{4}$ in. wide. $\frac{7}{16}$ in. shaft	1	All	...
015580	Gear, driven, for oil feed pump, $\frac{1}{4}$ in. wide. $\frac{7}{16}$ in. shaft	1	All	...
015567	Body, oil return pump, for $\frac{3}{8}$ in. gears with $\frac{7}{16}$ in. shaft	1	All	...
015599	Pin, dowel, for oil return pump	2	All	...
015576	Plate, front end, for oil pump return body	1	All	...
015573	Plate, back end, for oil pump return body	1	All	...
011617	Washer, paper, between oil return pump and carrying plate	1	All	...
000453	Screwing, retaining oil return pump to carrying plate. 1 in. by 2 BA	3	All	...

BEFORE ORDERING SPARES  
PLEASE NOTE THE INFORMATION GIVEN ON PAGES  
TWO AND THREE

PART NUMBER	DESCRIPTION	QTY.	USED ON	PRICE EACH £ s. d.
----------------	-------------	------	------------	--------------------------

**OIL PUMPS—continued**

015577	... Gear, driving, for oil return pump, $\frac{3}{8}$ in. wide. $\frac{7}{16}$ in. shaft .....	1	All	...
015578	... Gear, driven, for oil return pump, $\frac{3}{8}$ in. wide. $\frac{7}{16}$ in. shaft .....	1	All	...
Note 4	... Includes all the items listed above except the three 014903 and 000011 fixing nuts and washers.			
Note 5	... Includes the 000021, 000701 and 015001 bleed valve ball, spring and retaining grub screw.			

**OIL FELT FILTER (IN ENGINE)**

014235	... Filter, felt, for engine crankcase .....	1	All	...
018120	... Seat, for oil felt filter .....	1	All	...
014240	... Valve, relief, for oil felt filter .....	1	All	...
014241	... Spring, for oil felt filter relief valve .....	1	All	...
023331	... Cap, assembled, oil felt filter housing (also accommodates oil non-return valve) .....	1	All	...
023106	... Washer, oil filter housing cap .....	1	All	...
015034	... Gasket, paper oil filter chamber (fits between the two crankcase halves) .....	1	All	...
022538	... Filter, magnetic .....	1	All	...
000182	... Washer, for magnetic filter .....	1	All	...

**OIL DISTRIBUTOR**

022385	... Distributor, oil .....	1	All	...
014247	... Cap, housing, for oil distributor .....	1	All	...
023106	... Washer, fibre, for oil distributor housing cap .....	1	All	...
022580	... Washer, sealing crankcase bolt .....	1	All	...

## GENUINE MATCHLESS SPARES

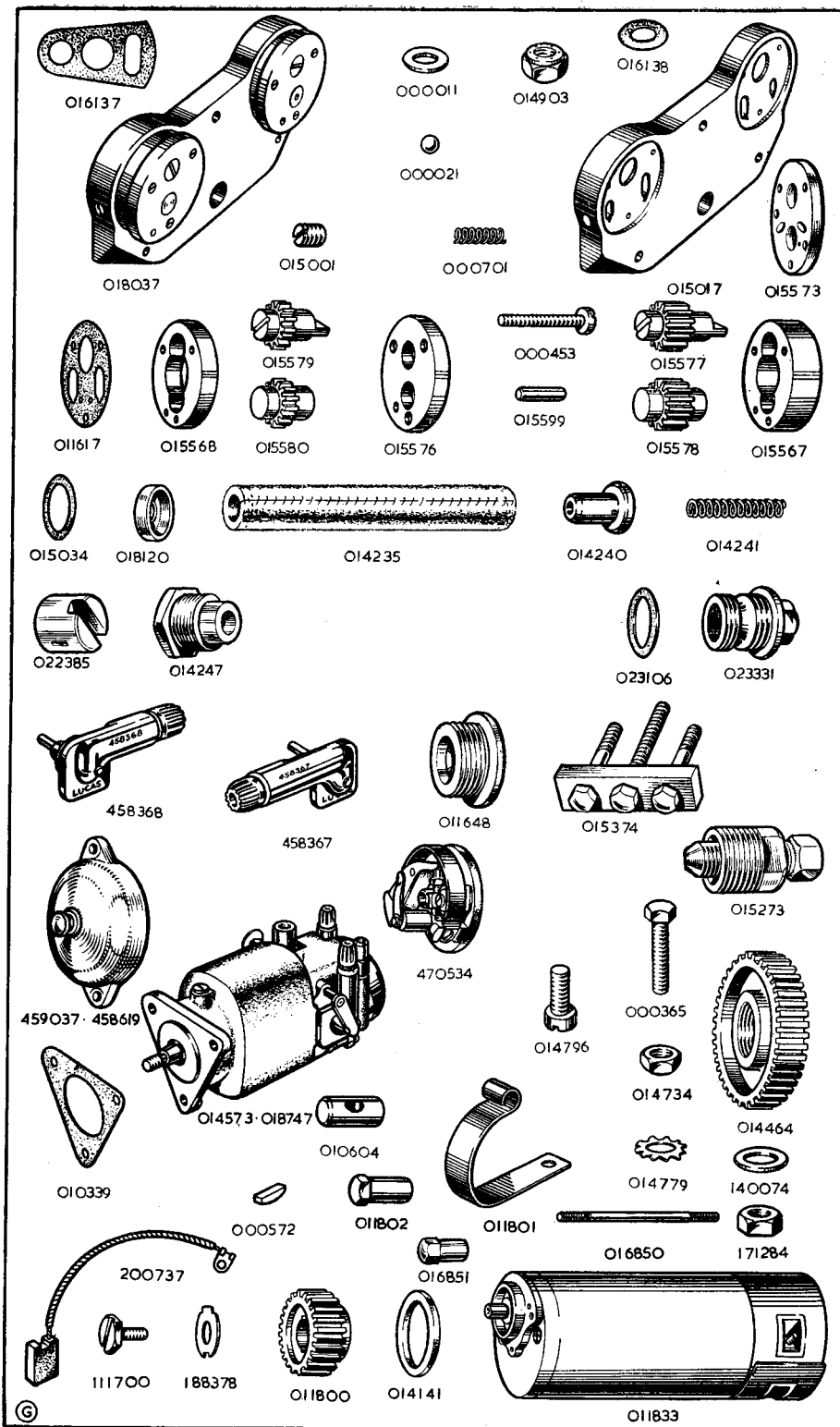
PURCHASED FROM

AN AUTHORISED "MATCHLESS" DEALER

OR FROM THE FACTORY, ARE IDENTICAL

WITH THE PARTS ORIGINALLY BUILT

INTO YOUR MOTOR CYCLE



PART NUMBER	DESCRIPTION	QTY.	USED ON	PRICE EACH £ s. d.
-------------	-------------	------	---------	-----------------------

### MAGNETO

018747	... Magneto, complete, Type K2F (Lucas number 42230-A)	1	G9, G11	...	★
458367	... Pick-up, with brush and spring, right	1	All	...	
458368	... Pick-up, with brush and spring, left	1	All	...	
470534	... Contact breaker, complete	1	All	...	
470609	... Contact set	1	All	...	
459037	... Cover, for contact breaker with switch	1	G9, G11	...	
010339	... Gasket, for magneto flange	1	All	...	
000365	... Bolt, retaining magneto, $1\frac{1}{16}$ in. by $\frac{5}{16}$ in. by 26	1	All	...	
<i>For the two magneto retaining studs, see "Crankcase Group"</i>					
014779	... Washer, lock, for magneto retaining bolt and studs	3	All	...	
000004	... Nut, for magneto retaining bolt and studs	3	All	...	
014464	... Gear, on magneto shaft	1	All	...	
140074	... Washer, plain, on magneto shaft	1	All	...	
171284	... Nut, on magneto shaft, retaining magneto driving shaft	1	All	...	

★ Price on application.

### DYNAMO

011833	... Dynamo, Type E3L-L-I-O (Lucas number 20009-B)	1	All	...	★
200826	... Cover assembly	1	All	...	
200737	... Brush, for dynamo, set of two, per set	1	All	...	
014141	... Gasket, between dynamo and crankcase	1	All	...	
011801	... Strap, retaining dynamo to crankcase	1	All	...	
014796	... Screw, retaining lower end of dynamo strap to crankcase, $\frac{7}{16}$ in. by $\frac{1}{4}$ in. by 20	1	All	...	
000012	... Washer, plain, for dynamo strap retaining screw	1	All	...	
010604	... Crosshead, in eye of dynamo retaining strap	1	All	...	
011802	... Nut, tensioning dynamo strap. (The stud on which this nut screws, is listed with the crankcase parts)	1	All	...	
000012	... Washer, plain, for dynamo strap tensioning nut	1	All	...	
011800	... Gear on dynamo shaft	1	All	...	
000572	... Key, locating dynamo shaft gear	1	All	...	
111700	... Bolt, retaining gear on dynamo shaft	1	All	...	
188378	... Washer, lock, for dynamo gear retaining bolt	1	All	...	
016850	... Stud, drawing dynamo to crankcase, and passing through timing cover, $2\frac{1}{2}$ in. long by 2 BA	1	All	...	
016851	... Nut, for dynamo draw stud	1	All	...	

★ Price on application.

### CRANKCASE BOLTS, with engine plates and all bolts passing through same (Twin Cylinder models)

014292	... Bolt, clamping crankcase throat, $3\frac{1}{16}$ in. by $\frac{5}{16}$ in. by 22. (These bolts pass through the driving side crankcase and thread into the timing side crankcase)	3	All	...	
000011	... Washer, plain, for 014292 crankcase bolts	2	All	...	
013944	... Plate, engine front, right side	1	All	...	
013943	... Plate, engine front, left side	1	All	...	
000306	... Stud, passing through crankcase and upper holes in engine, front plates. (This stud also supports the stays for the exhaust pipes)	1	All	...	
000003	... Nut, for engine plate stud	2	All	...	
000278	... Stud, passing through crankcase and lower holes in engine front plates, $4\frac{3}{8}$ in. by $\frac{5}{16}$ in. by 26	1	All	...	
000011	... Washer, plain, for 000278 engine plate stud	2	All	...	
000004	... Nut, for 000278 engine plate stud	2	All	...	
000277	... Stud, passing through crankcase at bottom, $4\frac{3}{8}$ in. by $\frac{5}{16}$ in. by 26	1	All	...	
000011	... Washer, plain, for 000277 crankcase stud	2	All	...	
000004	... Nut for 000277 crankcase stud	2	All	...	
000306	... Stud, passing through front of main frame and top of engine front plate	1	All	...	
000003	... Nut, for 000303 frame stud	2	All	...	

PART NUMBER	DESCRIPTION	QTY.	USED ON	PRICE EACH £ s. d.
<b>CRANKCASE BOLTS—continued</b>				
022291	... Plate, engine, rear left .....	1	All except G11CS	...
022292	... Plate, engine, rear right .....	1	All except G11CS	...
022422	... Cover, rear engine plates .....	1	All	...
000278	... Stud, passing through top of engine rear plates and the crankcase, $4\frac{9}{16}$ in. by $\frac{5}{16}$ in. by 26 .....	1	All	...
000278	... Stud, passing through bottom of engine rear plates and the crankcase, $4\frac{9}{16}$ in. by $\frac{5}{16}$ in. by 26.....	1	All	...
000011	... Washer, plain, for 000278 studs .....	3	All	...
000004	... Nut, for 000278 studs .....	3	All	...
024276	... Stud, passing through engine rear plates, rear of crank- case, and centre of front chaincase .....	1	All	...
000009	... Washer, plain, for 024276 stud.....	2	All	...
000002	... Nut, for 024276 stud .....	2	All	...
000303	... Stud, passing through top of engine, rear plates, and lower end of main frame seat tube.....	1	All	...
000003	... Nut, for 000306 stud .....	2	All	...
000010	... Washer, for 000306 stud .....	1	All	...
000278	... Stud, passing through back ends of engine rear plates, $4\frac{9}{16}$ in. by $\frac{5}{16}$ in. by 26 .....	2	All	...
	(The front chain adjusting eye bolt block screws on the right-hand end of this stud.)			
000011	... Washer, plain, for 000278 stud.....	4	All	...
000004	... Nut, for 000278 stud .....	3	All	...

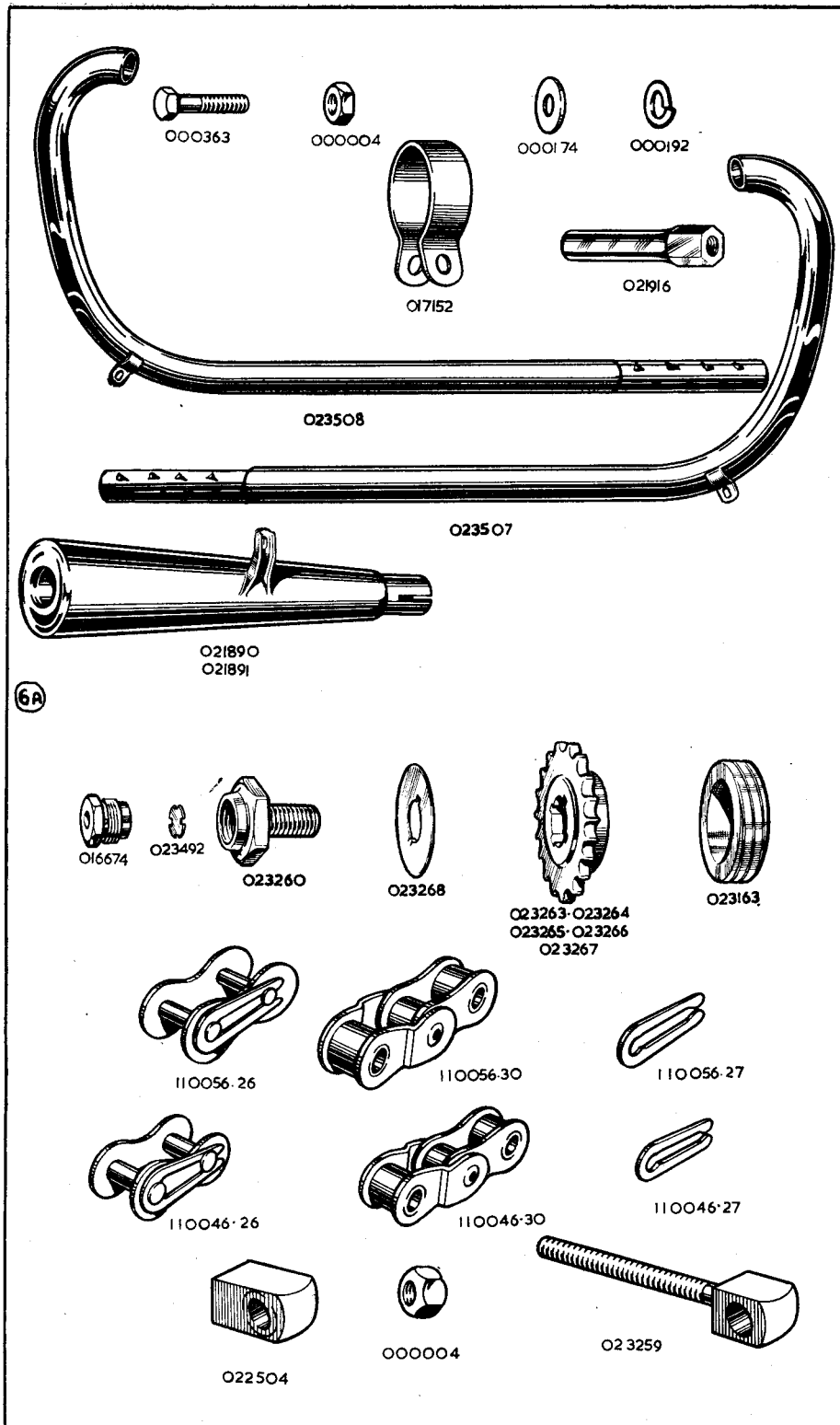
For the bolt stud passing through the top and bottom of the gearbox and the engine rear plates, see " Gear Box Fixing Bolts ".

For the footrest rod, which passes through the bottoms of the engine rear plates and the frame rails, see " Footrests ".

#### EXHAUST PIPES AND SILENCERS (Twin Cylinder)

023508	... Pipe, exhaust, bare, left side.....	1	G9-G11	...
023507	... Pipe, exhaust, bare, right side .....	1	G9-G11	...
021916	... Support, for exhaust pipe, left side or right side.....	2	G9-G11	...
000362	... Bolt, fixing exhaust pipe to support .....	2	G9-G11	...
000011	... Washer, plain, for exhaust pipe fixing bolt .....	2	G9-G11	...
000192	... Washer, spring, for exhaust pipe fixing bolt.....	2	G9-G11	...
021890	... Silencer, bare, left side .....	1	G9-G11	...
021891	... Silencer, bare, right side .....	1	G9-G11	...
017152	... Clip, clamping silencer to pipe.....	2	G9-G11	...
000363	... Bolt, for silencer clip, $\frac{3}{4}$ in. by $\frac{5}{16}$ in. by 26 .....	2	G9-G11	...
000174	... Washer, plain for silencer clip bolt.....	2	G9-G11	...
000004	... Nut for silencer clip bolt .....	2	G9-G11	...
016768	... Stud, fixing silencer to frame .....	2	G9-G11	...
000011	... Washer, plain, for silencer to frame fixing bolt .....	2	G9-G11	...
000192	... Washer, spring, for silencer to frame fixing bolt.....	2	G9-G11	...
000004	... Nut, silencer to frame stud .....	2	G9-G11	...

**MAINTENANCE MANUAL 1958 EDITION PRICE 4/-**  
**IS THE APPROPRIATE MANUAL FOR THIS SPARES LIST**



PART NUMBER	DESCRIPTION	QTY.	USED ON	PRICE EACH £ s. d.
<b>CARBURETTER</b>				
021873	... Carburetter, complete, less controls (Type 376/5) .....	1	G3LS ...	...
021874	... Carburetter, complete, less controls (Type 389/1) .....	1	G80S ...	...
021875	... Carburetter, complete, less controls (Type 376/6) .....	1	G9 ...	...
023595	... Carburetter, complete, less controls (Type 376/78) ...	1	G11 ...	...
021346	... Spacer, for carburetter, $\frac{3}{4}$ in. wide, $1\frac{1}{8}$ in. bore .....	1	G3LS ...	...
021252	... Spacer, for carburetter, $\frac{3}{4}$ in. wide, $1\frac{1}{2}$ in. bore .....	1	G80S ...	...
023496	... Spacer, for carburetter .....	1	G9-G11	...
011633	... Inlet manifold, bare .....	1	G9 ...	...
023406	... Inlet manifold, bare .....	1	G11 ...	...
000581	... Gasket, for carburetter spacer .....	1	G3LS, G80S	...
023012	... Gasket, between manifold and cylinder head .....	2	G9-G11	...
018503	... Ring, sealing, rubber, carburetter flange .....	1	All ...	...
000012	... Washer, manifold retaining studs .....	4	G9-G11	...
000005	... Nut, manifold retaining studs .....	4	G9-G11	...
010624	... Stud, retaining carburetter to manifold .....	2	G9-G11	...
000011	... Washer, carburetter retaining studs .....	2	G9-G11	...
000004	... Nut, carburetter retaining studs .....	2	G9-G11	...
376/003	... Carburetter body .....	1	G3LS-G11	...
376/002	... Carburetter body .....	1	G9 ...	...
389/003	... Carburetter body .....	1	G80S ...	...
376/077	... Side cover .....	1	All ...	...
376/078	... Side cover jointing washer .....	1	All ...	...
376/079	... Side cover screw .....	3	All ...	...
376/083	... Float .....	1	All ...	...
376/094	... Bush, for float spindle .....	1	All ...	...
376/089	... Float needle .....	1	All ...	...
376/088	... Float needle .....	1	All ...	...
376/065	... Mixing chamber cap securing ring .....	1	G3LS, G9-G11	...
389/065	... Mixing Chamber cap securing ring .....	1	G80S ...	...
4-235	... Mixing chamber cap securing ring spring .....	1	G3LS, G9, G11	...
29-201	... Mixing chamber cap securing ring spring .....	1	G80S ...	...
4-241	... Screw securing fixing cap ring clip .....	1	All ...	...
376-064	... Mixing chamber cap .....	1	G3LS, G9-G11	...
389-064	... Mixing chamber cap .....	1	G80S ...	...
4-035	... Control cable adjuster .....	2	All ...	...
376-062	... Air valve .....	1	G3LS, G9-G11	...
389-062	... Air valve .....	1	G80S ...	...
6-047	... Air valve guide .....	1	G3LS, G9, G11	...
29-057	... Air valve guide .....	1	G80S ...	...
376-060	... Throttle valve, size $3\frac{1}{2}$ .....	1	G3LS, G11	...
376-060	... Throttle valve, size 4 .....	1	G9 ...	...
389-060	... Throttle valve, size $3\frac{1}{2}$ .....	1	G80S ...	...
4-046	... Air valve spring .....	1	All ...	...
376-061	... Throttle valve spring .....	1	G3LS, G9, G11	...
389-061	... Throttle valve spring .....	1	G80S ...	...
376-068	... Throttle stop screw .....	1	All ...	...
376-069	... Throttle stop screw spring .....	1	All ...	...
332-017	... Pilot air adjusting screw .....	1	All ...	...
4-148	... Pilot air adjusting screw spring .....	1	All ...	...
376-063	... Taper jet needle .....	1	G3LS, G9, G11	...
389-063	... Taper jet needle .....	1	G80S ...	...
4-230	... Taper needle clip .....	1	All ...	...
376-072	... Needle jet, .1065 .....	1	All ...	...
376-100	... Main jet, size 210 .....	1	G3LS ...	...
376-100	... Main jet, size 260 .....	1	G80S ...	...
376-100	... Main jet, size 220 .....	1	G9 ...	...
376-100	... Main jet, size 280 .....	1	G11 ...	...
376-073	... Main jet holder .....	1	All ...	...
376-074	... Jet holder washer .....	1	All ...	...
376-075	... Main jet cover .....	1	All ...	...
376-076	... Pilot, jet, size 30 .....	1	All ...	...
376-095	... Pilot jet cover nut .....	1	All ...	...
116-162	... Pilot jet cover nut washer .....	1	All ...	...
376-057	... Jet block, $1\frac{1}{8}$ in. ....	1	G3LS, G11	...
376-056	... Jet block, 1 in. ....	1	G9 ...	...
389-057	... Jet block, $1\frac{1}{2}$ in. ....	1	G80S ...	...
376-067	... Jet block washer .....	1	All ...	...
376-070	... Locating peg for jet block .....	1	All ...	...





PART NUMBER	DESCRIPTION	QTY.	USED ON	PRICE EACH £ s. d.
-------------	-------------	------	---------	-----------------------

**CARBURETTER—continued**

376-097	... Petrol pipe banjo .....	1	All ...	...
376-091	... Petrol pipe banjo bolt .....	1	All ...	...
376-092	... Petrol pipe banjo bolt washer .....	1	All ...	...
14-175	... Banjo seating washer .....	1	All ...	...
376-093	... Filter gauze .....	1	All ...	...
343-011	... Tickler Body .....	1	All ...	...
376-086	... Tickler plunger .....	1	All ...	...
376-087	... Tickler spring .....	1	All ...	...
376-066	... Air intake venturi .....	1	G3LS, G9, G11	...
389-066	... Air intake venturi .....	1	G80S	...

**AIR CLEANER (Optional extra equipment)**

022346	... Cleaner, air .....	1	G3LS, G80S, G9, G11	...
022348	... Hose, for air cleaner .....	1	G3LS, G80S	...
022347	... Hose, for air cleaner .....	1	G9, G11	...
023273	... Clip, retaining air cleaner hose .....	1	G3LS, G9, G11	...
023272	... Clip retaining air cleaner hose.....	1	G80S	...
000347	... Bolt, fixing air cleaner .....	1	G3LS, G80S, G9, G11	...
000005	... Nut, for fixing bolt.....	1	G3LS, G80S, G9, G11	...
000012	... Washer for fixing bolt .....	1	G3LS, G80S, G9, G11	...

When an AIRCLEANER is fitted it is essential to fit a smaller jet, viz:—

For G3LS, use jet 376-100, size 200.....	1
For G80S, use jet 376-100, size 250.....	1
For G9, use jet 376-100, size 190.....	1
For G11, use jet 376-100, size 240 .....	1

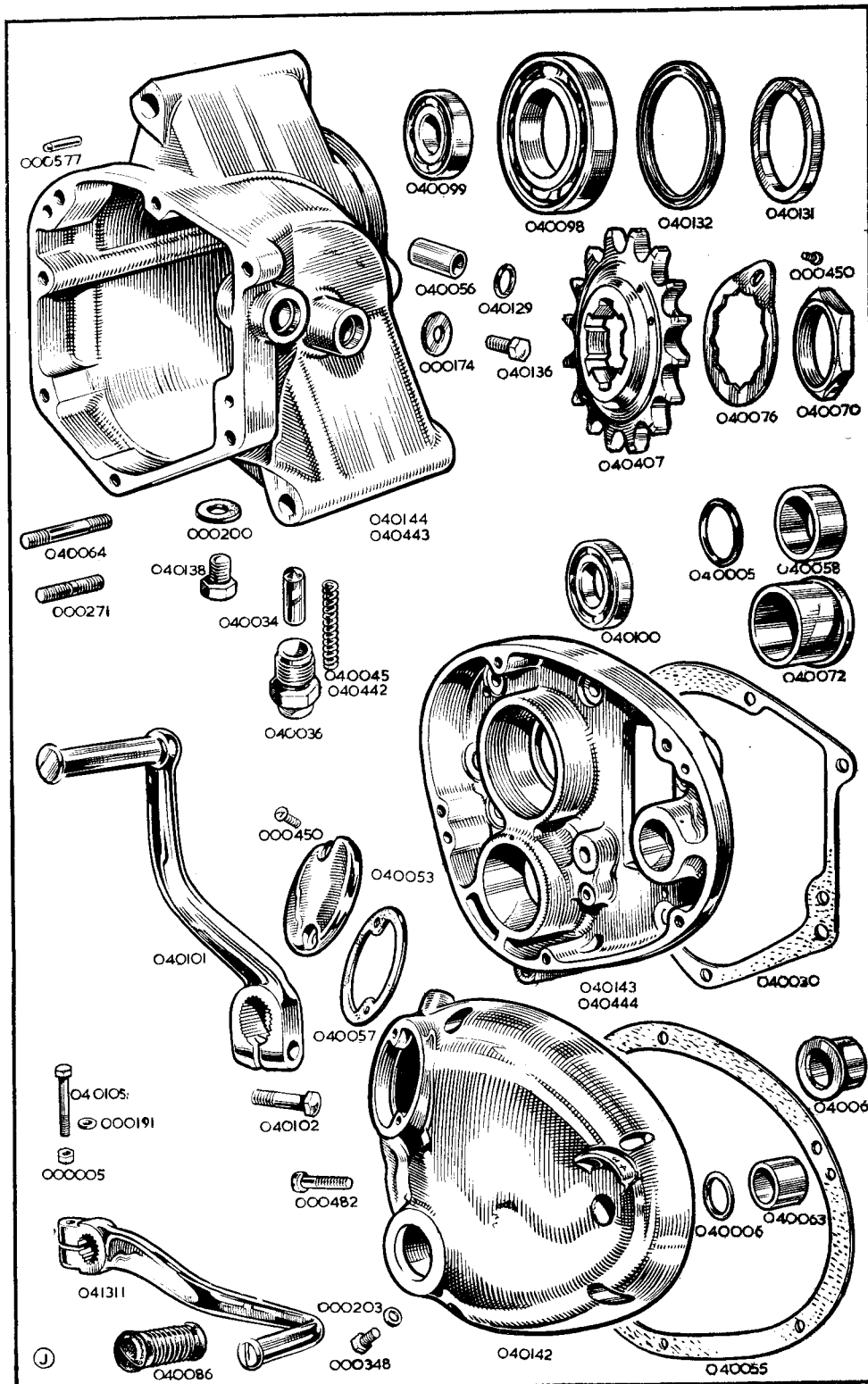
**ENGINE SPROCKETS (Singles)**

024137	... Sprocket, engine, bare, 17 teeth .....	1	G3LS, G80S	...
024138	... Sprocket, engine, bare, 18 teeth .....	1	G3LS, G80S	...
024139	... Sprocket, engine, bare, 19 teeth .....	1	G3LS, G80S	...
024140	... Sprocket, engine, bare, 20 teeth .....	1	G3LS, G80S	...
024141	... Sprocket, engine, bare, 20 teeth .....	1	G3LS, G80S	...
024142	... Sprocket, engine, bare, 22 teeth .....	1	G3LS, G80S	...
023066	... Spacer, for engine sprocket .....	1	All	...
024026	... Spacer, for generator rotor .....	1	G3LS, G80S	...
000230	... Nut, for generator rotor and engine sprocket.....	2	G3LS, G80S	...
000176	... Washer, for rotor and engine sprocket nuts.....	1	G3LS, G80S	...

**ENGINE SPROCKETS (Twins) (and Crankcase Release Valve)**

023263	... Sprocket, engine, bare, 18 teeth .....	1	All	...
023264	... Sprocket, engine, bare, 19 teeth .....	1	All	...
023265	... Sprocket, engine, bare, 20 teeth .....	1	All	...
023266	... Sprocket, engine, bare, 21 teeth (standard on G9).....	1	All	...
023267	... Sprocket, engine, bare, 22 teeth (standard on G1) .....	1	All	...
023163	... Spacer (Collar), for engine sprocket .....	1	All	...
023260	... Bolt, for engine sprocket (also houses crankcase release valve) .....	1	All	...
023268	... Washer, tab, for engine sprocket .....	1	All	...
016676	... Diaphragm, for crankcase release valve .....	1	All	...
018282	... Spring, for release valve diaphragm .....	1	All	...
016674	... Plug, retaining release valve diaphragm (screws in Bolt 023260).....	1	All	...

ALWAYS INCLUDE ALL THE LETTERS  
WHEN QUOTING THE ENGINE NUMBER



PART NUMBER	DESCRIPTION	QTY.	USED ON	PRICE EACH £ s. d.
-------------	-------------	------	---------	-----------------------

### CHAINS

017299 ...	Chain, front, 67 links, $\frac{1}{2}$ in. by .305 in. ....	1	G3LS, G9 ...	
022870 ...	Chain, front, 68 links, $\frac{1}{2}$ in. by .305 in. ....	1	18S, G11 ...	
017376 ...	Chain, rear, 98 links, $\frac{1}{2}$ in. by .380 in. ....	1	G3LS, G80S ...	
022876 ...	Chain, rear, 97 links, $\frac{1}{2}$ in. by .380 in. ....	1	G9-G11 ...	
110046-26	Link, connecting, for $\frac{1}{2}$ in. chains. ....	R	All ...	
110056-26	Link, connecting, for $\frac{1}{2}$ in. chains. ....	R	All ...	
110046-30	Link, cranked, double, for $\frac{1}{2}$ in. chains ...	R	All ...	
110056-30	Link, cranked, double, for $\frac{1}{2}$ in. chains ...	R	All ...	
110046-27	Clip, spring, for 110046-26 connecting links ( $\frac{1}{2}$ in.) ...	R	All ...	
110056-27	Clip, spring, for 110056-26 connecting links ( $\frac{1}{2}$ in.) ...	R	All ...	

The prices of front and rear chains include spring connecting links and these are also included in the number of links per chain.

We do not sell odd lengths of chains.

### GEAR BOX FIXING PARTS

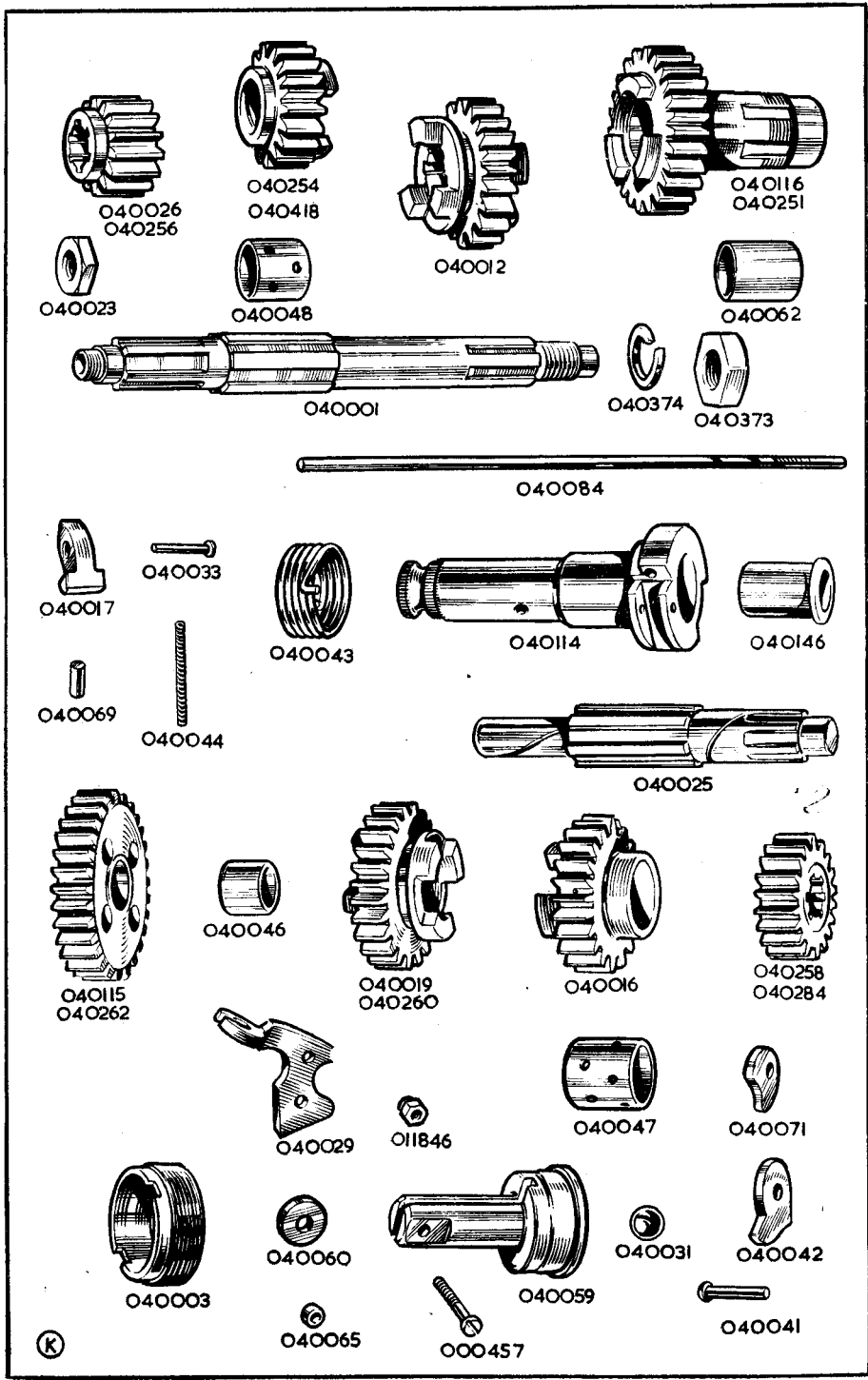
022509 ...	Bolt, gear box top fitting ...	1	G3LS, G80S, G9, G11 ...	
000318 ...	Stud, gearbox bottom fixing, $4\frac{9}{16}$ in. by $\frac{7}{16}$ in. by 26 ...	1	All ...	
000002 ...	Nut, for gearbox top fixing bolt ...	1	All ...	
000002 ...	Nut, for gearbox bottom fixing stud ...	2	All ...	
000177 ...	Washer, plain for top fixing bolt ...	2	All ...	
022869 ...	Eye-bolt, for front chain adjustment ...	1	G3LS, G80S ...	
023259 ...	Eye-bolt, for front chain adjustment ...	1	G9, G11 ...	
000004 ...	Nut, for front chain adjustment eye-bolt ...	1	G3LS, G80S, G9, G11 ...	
022504 ...	Crosshead, for front chain adjuster eye-bolt. ....	1	G3LS, G80S, G9, G11 ...	
000402 ...	Bolt, fixing crosshead to engine plate. ....	1	G3LS, G80S, G9, G11 ...	
000010 ...	Washer, plain, for crosshead fixing bolt. ....	1	G3LS, G80S, G9, G11 ...	

### GEAR BOX SHELL

040144 ...	Shell, gear box, with two bushes. ....	1	All except G3CS, G80CS. ...	
040143 ...	Case, inner, for kick-start. ....	1	G3LS, G80S, G9, G11 ...	
040142 ...	Cover, outer, for kick-start ...	1	All ...	
040030 ...	Gasket, for inner kick-start case ...	1	All ...	
040055 ...	Gasket, for outer kick-start case ...	1	All ...	
040138 ...	Plug, drain, for shell ...	1	All ...	
000200 ...	Washer, fibre, for drain plug ...	1	All ...	
000348 ...	Plug, oil level ...	1	All ...	
000203 ...	Washer, fibre, for oil level plug ...	1	All ...	
040053 ...	Cover, inspection ...	1	All ...	
040057 ...	Gasket, for inspection cover. ....	1	All ...	
000450 ...	Screw, for inspection cover ...	2	All ...	
000577 ...	Pin, dowel, locating kick-start case ...	2	All ...	
040064 ...	Stud, in shell for kick-start case ...	2	All ...	
000271 ...	Stud, in shell, for kick-start case ...	5	All ...	
000004 ...	Nut, for kick-start case stud ...	7	All ...	
000577 ...	Pin, dowel, locating kick-start cover ...	2	All ...	
000482 ...	Screw, securing kick-start cover ...	5	All ...	

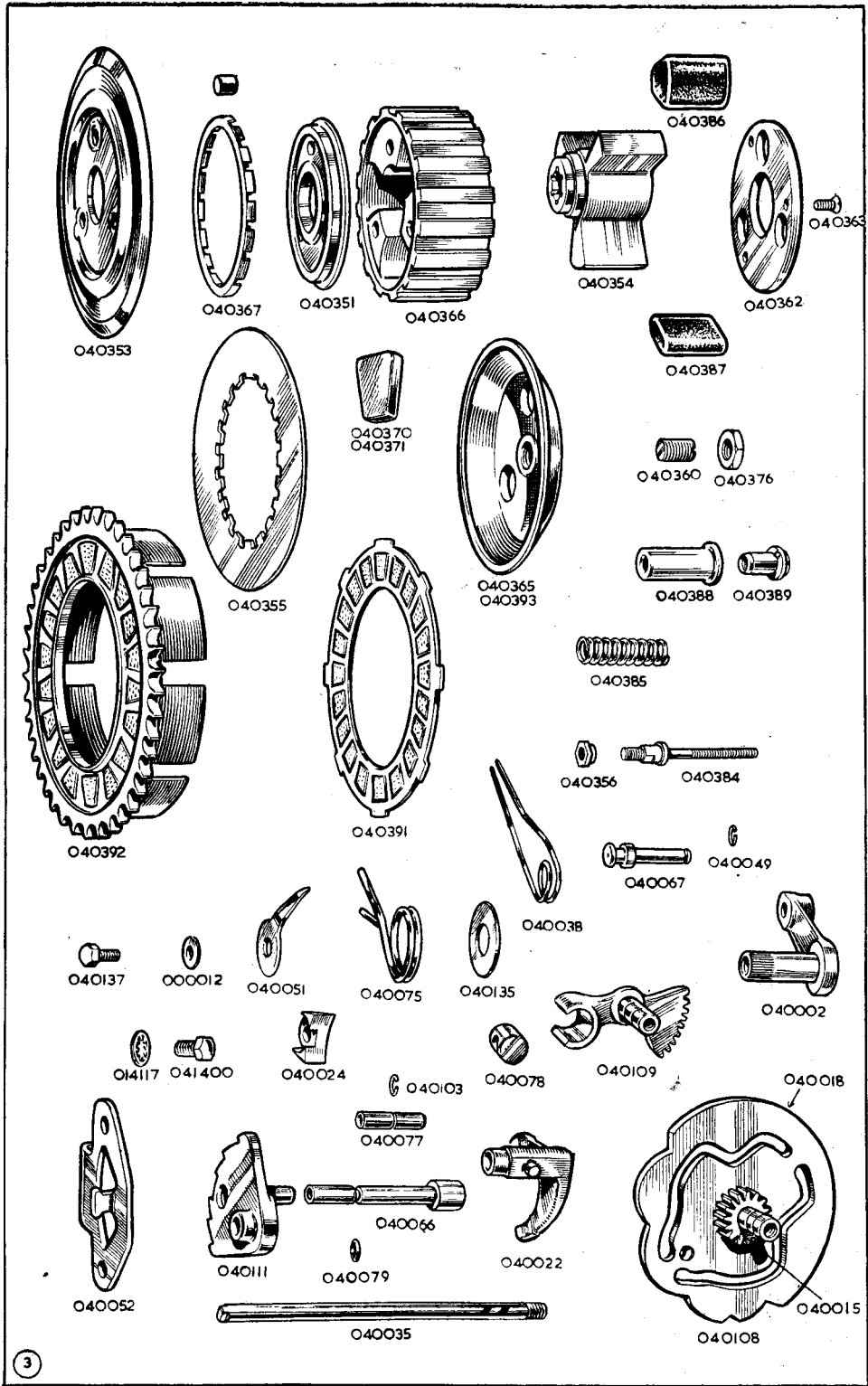
### SHAFTS AND GEARS

040001 ...	Main shaft, for gearbox ...	1	All ...	
040025 ...	Layshaft, for gearbox ...	1	All ...	
040116 ...	Gear, driving, main, with bushes, 24 teeth ...	1	G3LS, G80S, G9, G11 ...	
040026 ...	Gear, first mainshaft, 14 teeth ...	1	G3LS, G80S, G9, G11 ...	
040418 ...	Gear, second mainshaft, 18 teeth. ....	1	G3LS, G80S, G9, G11 ...	
040012 ...	Gear, third, mainshaft, 21 teeth ...	1	All ...	



(K)

PART NUMBER	DESCRIPTION	QTY.	USED ON	PRICE EACH £ s. d.
<b>SHAFTS AND GEARS—continued</b>				
040284 ...	Pinion, on layshaft, 18 teeth .....	1	G3LS, G80S, G9, G11 ...	
040019 ...	Gear, second layshaft, 24 teeth .....	1	G3LS, G80S, G9, G11 ...	
040016 ...	Gear, third layshaft, 21 teeth .....	1	All ...	
040115 ...	Gear, first layshaft, 28 teeth .....	1	G3LS, G80S, G9, G11 ...	
040062 ...	Bush, for main driving gear .....	2	All ...	
040048 ...	Bush, for mainshaft second gear .....	1	All ...	
040047 ...	Bush, for layshaft third gear .....	1	All ...	
040046 ...	Bush, for layshaft first gear .....	1	All ...	
<b>GEARBOX BEARINGS AND OIL-SEALS</b>				
040098 ...	Bearing, ball, for main driving gear .....	1	All ...	
040099 ...	Bearing, ball, for mainshaft in kick-starter case .....	1	All ...	
040100 ...	Bearing, ball, for layshaft in shell .....	1	All ...	
040056 ...	Bush, in shell for camplate spindle and quadrant spindle .....	2	All ...	
040132 ...	Oil seal, for main gear bearing .....	1	All ...	
040129 ...	Oil seal, "O" ring for quadrant assembly .....	1	All ...	
040072 ...	Bush, in kick-starter case, for kick-starter spindle .....	1	All ...	
040061 ...	Bush, in kick-starter case for footchange spindle .....	1	All ...	
040058 ...	Bush, in kick-starter case cover, for kick-starter spindle .....	1	All ...	
040063 ...	Bush, in kick-starter case cover, for footchange spindle .....	1	All ...	
040079 ...	Oil seal, "O" ring for ratchet spindle .....	1	All ...	
040006 ...	Oil seal, "O" ring for ring footchange spindle .....	1	All ...	
040005 ...	Oil seal, "O" ring for kick-starter .....	1	All ...	
040036 ...	Bush for cam-plate plunger .....	1	All ...	
<b>GEARBOX SMALL SPROCKET</b>				
040407 ...	Sprocket, gearbox, 16 teeth, $\frac{5}{8}$ in. by .380 in. ....	1	All ...	
040070 ...	Nut, fixing gearbox sprocket .....	1	All ...	
040076 ...	Plate, locking gearbox sprocket nut .....	1	All ...	
000450 ...	Screw, for sprocket locking plate .....	1	All ...	
040131 ...	Spacer, for gearbox sprocket .....	1	All ...	
<b>GEAR OPERATING PARTS</b>				
040018 ...	Cam-plate, only .....	1	All ...	
040015 ...	Spindle only, for cam-plate .....	1	All ...	
040109 ...	Quadrant assembly, with spindle .....	1	All ...	
000174 ...	Washer, plain, for cam-plate and quadrant .....	2	All ...	
040136 ...	Screw, for cam-plate and quadrant .....	2	All ...	
040022 ...	Fork, selector .....	2	All ...	
040035 ...	Shaft, for selector fork .....	1	All ...	
040111 ...	Gear, ratchet assembly .....	1	All ...	
040078 ...	Roller for knuckle pin .....	1	All ...	
040038 ...	Spring, pawl, for gear-change .....	1	All ...	
040110 ...	Carrier, pawl assembly .....	1	All ...	
040002 ...	Carrier, pawl only .....	1	All ...	
040067 ...	Pin, for pawl carrier .....	1	All ...	
040024 ...	Pawl, foot-change .....	1	All ...	
040049 ...	Circlip, foot-change pawl .....	1	All ...	
040066 ...	Spindle, for ratchet .....	1	All ...	
040075 ...	Spring, return, gear-change .....	1	All ...	
040135 ...	Washer, foot-change return spring .....	1	All ...	
040052 ...	Plate, stop, gear-change .....	1	All ...	
041400 ...	Screw, gear-change stop plate .....	1	All ...	
014117 ...	Washer, shakeproof, stop plate screw .....	1	All ...	
041311 ...	Pedal, foot-change, bare .....	1	All ...	
040086 ...	Rubber, only, foot-change pedal .....	1	All ...	
040105 ...	Bolt, foot-change pedal .....	1	All ...	
000012 ...	Washer, spring foot-change pedal bolt .....	1	All ...	
000005 ...	Nut, foot-change pedal bolt .....	1	All ...	
040051 ...	Indicator, gear .....	1	All ...	
040137 ...	Screw, gear indicator .....	1	All ...	
000012 ...	Washer, plain, gear indicator screw .....	1	All ...	
040034 ...	Plunger, for cam-plate .....	1	All ...	
040442 ...	Spring, for cam-plate plunger .....	1	All except G3CS, G80CS...	



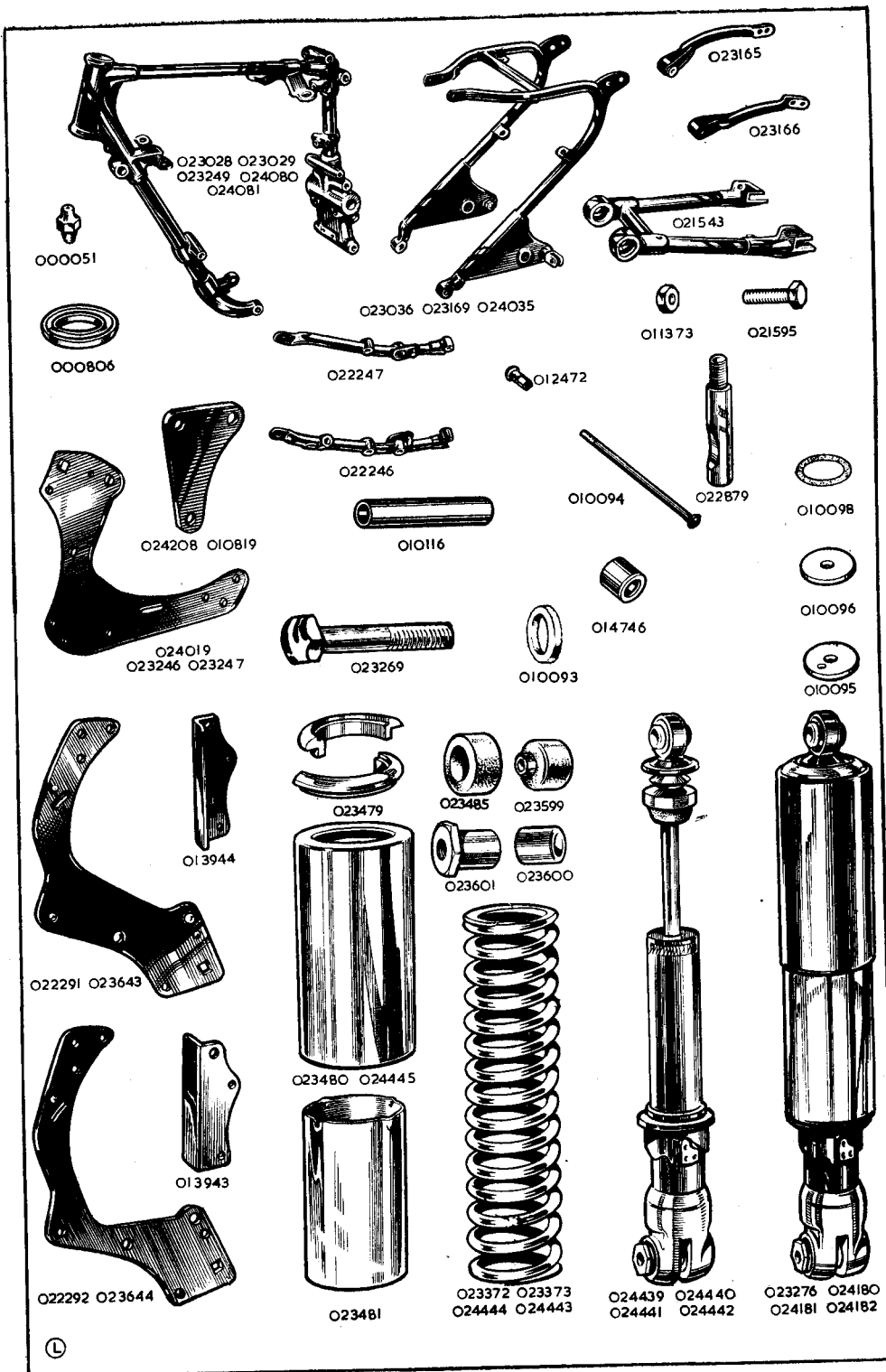
3

A-M-C

J-A-B

PART NUMBER	DESCRIPTION	QTY.	USED ON	PRICE EACH £ s. d.
<b>CLUTCH</b>				
040366	Centre, clutch	1	All	...
040353	Plate, back, for clutch	1	All	...
040351	Plate, race	1	All	...
040367	Cage, roller	1	All	...
000075	Roller for clutch	15	All	...
040392	Sprocket, with inserts, for clutch	1	All	...
040371	Insert, for clutch sprocket	per doz. 19	All	...
040354	Centre, shock absorber	1	All	...
040386	Rubber, large, shock absorber	3	All	...
040387	Rubber, small, shock absorber	3	All	...
040362	Plate, cover, shock absorber	1	All	...
040363	Screw, shock absorber cover plate	3	All	...
040373	Nut, retaining clutch	1	All	...
040374	Washer, lock, for clutch retaining nut	1	All	...
040355	Plate, clutch, plain	4	G3LS	...
040355	Plate, clutch, plain	5	All except G3LS	...
040391	Plate, clutch, with inserts	3	G3LS	...
040391	Plate, clutch, with inserts	4	All except G3LS	...
040370	Insert, for clutch plates	per doz. 60	G3LS	...
040370	Insert, for clutch plates	per doz. 80	All except G3LS	...
040393	Plate, pressure, bare	1	G3LS	...
040365	Plate, pressure, bare	1	All except G3LS	...
040360	Adjuster, for clutch, in pressure plate	1	All	...
040376	Nut, lock, for clutch adjuster	1	All	...
040384	Stud, for clutch spring	3	All	...
040388	Cup, for clutch spring	3	All	...
040385	Spring, for clutch	3	All	...
040356	Nut, fixing clutch stud to centre	3	All	...
040389	Nut, for clutch spring adjustment	3	All	...
<b>CLUTCH OPERATING PARTS</b>				
040084	Rod, clutch operating	1	All	...
040029	Lever, clutch operating	1	All	...
040059	Body, clutch operating	1	All	...
040003	Ring, lock, clutch operating body	1	All	...
040031	Ball, clutch operating	1	All	...
040060	Roller, clutch operating	1	All	...
040065	Sleeve, clutch operating roller	1	All	...
000457	Screw, clutch operating roller—2 BA	1	All	...
011846	Nut, clutch operating roller screw—2 BA	1	All	...
<b>KICK-STARTER</b>				
040114	Axle kick-starter, with bush	1	All	...
040146	Bush, for kick-starter axle	1	All	...
040017	Pawl, for kick-starter axle	1	All	...
040033	Pin, kick-starter axle pawl	1	All	...
040044	Spring, kick-starter, axle pawl	1	All	...
040069	Plunger, kick-starter, axle pawl	1	All	...
040042	Stop, for kick-starter axle	1	All	...
040071	Cam, for kick-starter axle	1	All	...
040041	Rivet, for kick-starter cam and stop	2	All	...
040023	Nut, for main shaft (kick-starter end)	1	All	...
040043	Spring, return, kick-starter	1	All	...
040101	Crank, kick-starter (with integral pin)	1	G3LS, G80S, G9, G11	...
040102	Bolt, fixing, kick-starter crank to axle	1	All	...

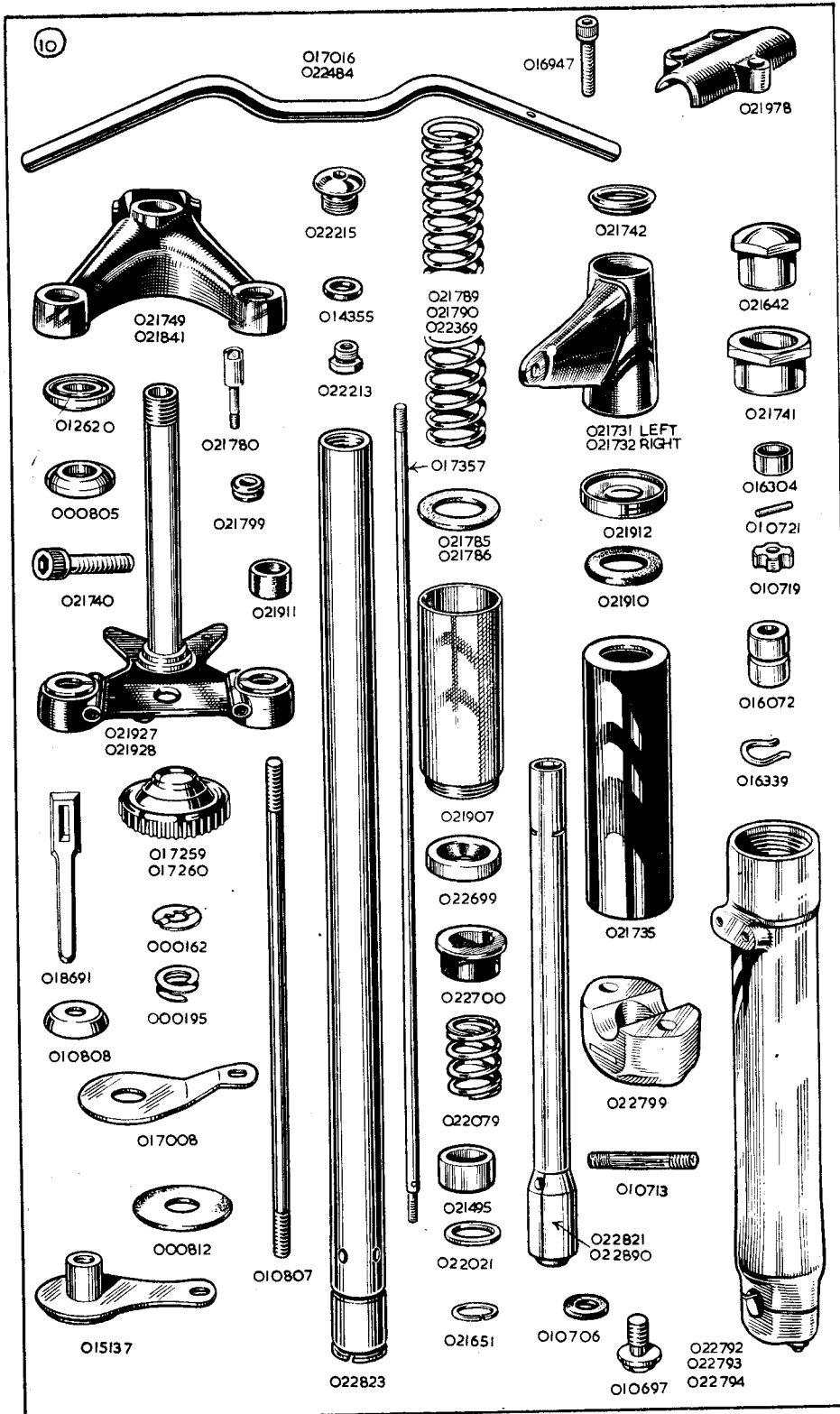
THE MAINTENANCE MANUAL AND INSTRUCTION BOOK  
HAS NINETY-NINE PAGES AND FORTY-NINE ILLUSTRATIONS





PART NUMBER	DESCRIPTION	QTY.	USED ON	PRICE EACH £ s. d.
<b>FRONT FRAME</b>				
023028	... Frame, front portion, only bare .....	1	G3LS, G80S	...
023029	... Frame, front portion, only, bare .....	1	G9, G11	...
000806	... Race, Ball, for frame head lug .....	2	All except G3LCT	...
000072	... Balls, $\frac{3}{8}$ in. diameter, for steering head.....per set of 56	All	...	...
000051	... Nipple, grease, for frame head lug .....	1	All	...
023250	... Stud, for seat lug (below saddle).....	1	G3LS, G80S, G9, G11	...
000292	... Nut, for seat lug stud .....	2	G3LS, G80S, G9, G11	...
000176	... Washer, for seat lug stud .....	2	G3LS, G80S, G9, G11	...
021084	... Stud, uniting front frame and rails .....	1	G3LS, G80S, G9, G11	...
000003	... Nut, for uniting stud .....	1	All	...
000010	... Washer, for uniting stud .....	1	All	...
<b>REAR FRAME</b>				
023036	... Loop, rear frame.....	1	G3LS, G80S, G9, G11	...
022246	... Rail, frame, left side .....	1	G3LS, G80S, G9, G11	...
022247	... Rail, frame, right side .....	1	G3LS, G80S, G9, G11	...
022248	... Stud, for rear loop at bottom .....	1	G3LS, G80S, G9, G11	...
000002	... Nut, rear loop stud .....	2	All	...
000009	... Washer, rear loop stud .....	2	All	...
023165	... Tube, supporting rear mudguard, left side .....	1	G3LS, G80S, G9, G11	...
023166	... Tube, supporting rear mudguard, right side.....	1	G3LS, G80S, G9, G11	...
000351	... Bolt, fixing support tube to mudguard .....	2	G3LS, G80S, G9, G11	...
022549	... Washer, chrome (outside), support tube bolt .....	2	G3LS, G80S, G9, G11	...
000191	... Washer, spring support tube bolt .....	2	G3LS, G80S, G9, G11	...
000005	... Nut, support tube bolt .....	2	G3LS, G80S, G9, G11	...
023269	... Bolt, fixing support tube to loop (also fixes top pivot of rear leg) .....	2	G3LS, G80S, G9, G11	...
022519	... Cover, for frame.....	1	G3LS, G80S	...
022390	... Cover, for frame.....	1	G9, G11	...
022541	... Beading, plastic, 20 in. for frame cover .....	1	G3LS, G80S, G9, G11	...
014357	... Screw, for frame cover .....	2	All	...
000191	... Washer, spring, for frame cover screw .....	2	All	...
<b>REAR FORK</b>				
021543	... Fork, rear.....	1	All	...
021595	... Adjuster, rear chain .....	1	All	...
011373	... Nut, lock, for chain adjuster .....	1	All	...
014746	... Sleeve, assembly (bushed).....	2	All	...
010116	... Tube .....	1	All	...

BEFORE ORDERING SPARES  
PLEASE NOTE THE INFORMATION GIVEN ON PAGES  
TWO AND THREE



PART NUMBER	DESCRIPTION	QTY.	USED ON	PRICE EACH		
				£	s.	d.

### REAR FORK—continued

010095	... Cap, for rear fork bearing, right side.....	1	All	...	...	...
010096	... Cap, for rear fork bearing, left side .....	1	All	...	...	...
010093	... Washer, felt, for rear fork bearing .....	2	All	...	...	...
010098	... Gasket, for rear fork bearing caps .....	2	All	...	...	...
010094	... Spoke, for rear fork bearing (central tie bolt) .....	1	All	...	...	...
012472	... Nipple, for rear fork bearing spoke .....	1	All	...	...	...
000485	... Screw, plug, for oil, in end cap, $\frac{1}{4}$ in. by $\frac{1}{4}$ in. by 26 .....	1	All	...	...	...
000203	... Washer, fibre, for oil plug screw.....	1	All	...	...	...
022879	... Pin, cotter, for bearing tube.....	2	All	...	...	...
000004	... Nut, for bearing cotter pin .....	2	All	...	...	...
014117	... Washer, for bearing cotter pin .....	2	All	...	...	...

### FORK ASSEMBLIES

The following fork assemblies are complete and include ball races for the fork crown and top head lug (but not the two frame ball races).

023521	... Fork, assembly (TELEDRUALIC Front Fork, Solo) .....	1	G3LS, G80S, G9, G11	...	...	...
023522	... Fork, assembly (TELEDRUALIC Front Fork, Sidecar) ...	1	G3LS, G80S, G9, G11	...	...	...

For ease of servicing, the inner tube unit and damper unit are listed and supplied as separate assemblies. This enables a complete assembly to be exchanged in minimum time.

The units are listed below.

023523	... Front fork inner tube assembly, Solo .....	2	G3LS, G80S, G9, G11	...	...	...
023524	... Front fork inner tube assembly, Sidecar .....	2	G3LS, G80S, G9, G11	...	...	...

The above assemblies comprise:—

Inner tubes with rubber buffers, bushes and circlips, top bolts with washers and sealing rings, slider extensions with oil seals, fork springs and washers.

021974	... Front fork damper assembly.....	2	G3LS, G80S, G9, G11	...	...	...
--------	-------------------------------------	---	------------------------	-----	-----	-----

The above assembly comprises:—

Rod and two nuts, damper tube with valve, seat and pin, sleeve and clip and bottom fixing bolt with washer.

### FRONT FORK

021927	... Crown, assembly, comprising crown, stem and circlip (these parts not sold separately).....	1	G3LS, G80S, G9, G11	...	...	...
000805	... Race, ball, for fork crown .....	1	All	...	...	...
021740	... Screw, pinch, for fork crown .....	2	G3LS, G80S, G9, G11	...	...	...
021749	... Lug, for handlebar and steering head .....	1	G3LS, G80S, G9, G11	...	...	...
012620	... Race, ball, for handlebar lug .....	1	All	...	...	...
000051	... Nipple, grease, for handlebar lug .....	1	All	...	...	...
021741	... Nut, adjusting, for fork crown stem .....	1	All	...	...	...
021642	... Nut, lock (domed), for fork crown stem .....	1	All	...	...	...
022823	... Tube, fork, inner .....	2	All	...	...	...
021911	... Buffer, rubber, for fork inner tube.....	6	All	...	...	...
021495	... Bush, bottom, for fork inner tube .....	2	All	...	...	...
021651	... Circlip, for fork inner tube bush.....	4	All	...	...	...
022215	... Bolt, top, for fork inner tube .....	2	All	...	...	...
022216	... Grommet for top bolt .....	2	All	...	...	...
022213	... Adaptor for damper rod .....	2	All	...	...	...
014355	... Ring, sealing, for fork inner tube top bolt.....	2	All	...	...	...
022792	... Slider, fork, with cap, studs and nuts, left.....	1	G3LS, G80S, G9, G11	...	...	...
022793	... Slider, fork, with cap, studs, and nuts, right.....	1	G3LS, G80S, G9, G11	...	...	...
022799	... Cap, for fork slider.....	2	All	...	...	...
010713	... Stud, securing fork slider cap, $1\frac{1}{8}$ in. by $\frac{5}{16}$ in. by 26 and 22 .....	4	All	...	...	...
000011	... Washer, plain, for fork slider cap stud .....	4	All	...	...	...

PART NUMBER	DESCRIPTION	QTY.	USED ON	PRICE EACH £ s. d.
-------------	-------------	------	---------	-----------------------

### FRONT FORK—continued

000004	Nut, for fork slider cap stud	4	All	...
021907	Extension, for fork slider	2	All	...
022700	Bush, plastic, for fork inner tube	2	All	...
022699	Oil seal, for fork inner tube (rubber)	2	All	...
022369	Spring, main, for front fork, solo	2	G3LS, G80S, G9, G11	...
021789	Spring, main, for front fork, sidecar	2	G3LS, G80S, G9, G11	...
022079	Spring, buffer, for front fork	2	All	...
022021	Collar, for buffer spring	2	All	...
021785	Washer, leather, fork spring seating, top	2	All	...
021786	Washer, leather, fork spring seating, bottom	2	All	...
021732	Tube, fork cover, top, right, with lamp lug	1	All	...
021731	Tube, fork cover, top, left, with lamp lug	1	All	...
021742	Spigot, for top of fork top cover tubes	2	All	...
021910	Seat (rubber), for cover tube	2	All	...
021912	Housing, for fork top cover tube	2	All	...
021735	Tube fork cover, bottom	2	All	...
000485	Screw, plug, oil drain, for fork slider, $\frac{3}{8}$ in. by $\frac{1}{4}$ in. by 26	2	All	...
000203	Washer, fibre, for fork slider screw oil	2	All	...
022890	Tube, fork damper	2	G3LS, G80S, G9, G11	...
010697	Bolt, fixing fork damper to slider, $\frac{7}{16}$ in. by $\frac{5}{16}$ in. by 26	2	All	...
010706	Washer, fibre, for damper tube bolt	2	All	...
017357	Rod, for fork damper	2	All	...
000004	Nut, lock, top end of damper rod	2	All	...
016072	Sleeve, plunger, for fork damper rod	2	All	...
016339	Clip, retaining damper rod sleeve	2	All	...
016304	Valve, for fork damper	2	All	...
010721	Pin, stop, for fork damper valve	2	All	...
010719	Seat, for fork damper valve	2	All	...
000005	Nut, lock, for fork damper valve seat	2	All	...
018691	Steering locking bar (own padlock to be used)	1	All	...

### REAR SUSPENSION UNIT

024180	Unit, complete, frame stay (Solo)	2	G3LS, G80S, G9, G11	...
023276	Unit complete, frame stay (Sidecar)	2	G3LS, G80S, G9, G11	...
024442	Unit, damper, inner assembly (Solo and Sidecar)	2	G3LS, G80S, G9, G11	...
023480	Dust Shield, Top	2	All except scrambles	...
023481	Dust shield, bottom	2	All	...
023479	Clips, top shield	each half 4	All	...
023373	Spring, main, Solo (red and pink)	2	G3LS, G80S, G9, G11	...
023372	Spring, main, Sidecar (blue and yellow)	2	G3LS, G80S, G9, G11	...
023599	Sleeve, assembly, with rubber bush, top pivot	2	All	...
023485	Rubber, bottom pivot	2	All	...
023600	Bush, bottom pivot, rubber	2	All	...
023601	Nut, bottom pivot, bolt	2	All	...
023269	Bolt, top pivot	2	G3LS, G80S, G9, G11	...
016712	Nut, top pivot bolt	2	G3LS, G80S, G9, G11	...
016359	Bolt, bottom pivot	2	All	...
000010	Washer, plain, pivot bolts	4	All	...

### STEERING DAMPER (This is an optional extra)

022060	Damper steering, complete set of parts	1	All	...
017259	Knob, control, for steering damper	1	All	...
000162	Washer, ratchet, for steering damper knob	1	All	...

PART NUMBER	DESCRIPTION	QTY.	USED ON	PRICE EACH £ s. d.
-------------	-------------	------	---------	-----------------------

### STEERING DAMPER—continued

000195	Washer, spring, for steering damper knob	1	All	...
010808	Cap, for top of steering stem	1	All	...
010807	Drawbolt, for steering damper	1	All	...
015137	Sleeve, assembly, lower end of drawbolt	1	All	...
000073	Nut, locking sleeve to drawbolt	1	All	...
014577	Bolt, fixing sleeve assembly, $\frac{7}{8}$ in. by $\frac{1}{2}$ in. by 26	1	All	...
000191	Washer, spring, for bolt 014577	1	All	...
000012	Washer, plain, for bolt 014577	1	All	...
017008	Plate, anchor, top position	1	All	...
014577	Bolt, fixing top anchor plate, $\frac{7}{8}$ in. by $\frac{1}{2}$ in. by 26	1	All	...
000191	Washer, spring, for bolt 014577	1	All	...
000812	Washer, friction, for steering damper	2	All	...
021811	Nut, lock, for fork crown stem (this replaces the domed locknut 021642 when a steering damper is fitted)	1	All	...

### HANDLEBAR

022484	Handlebar, bare (standard)	1	G3LS, G80S, G9, G11	...
022732	Handlebar, bare (semi-western)	1	G3LS, G80S, G9, G11	...
021978	Clip, (half only), for handlebar lug	1	All	...
016947	Screw, for handlebar clip, $\frac{7}{8}$ in. by $\frac{1}{4}$ in. by 26 (socket head)	3	All	...

### CENTRE STAND

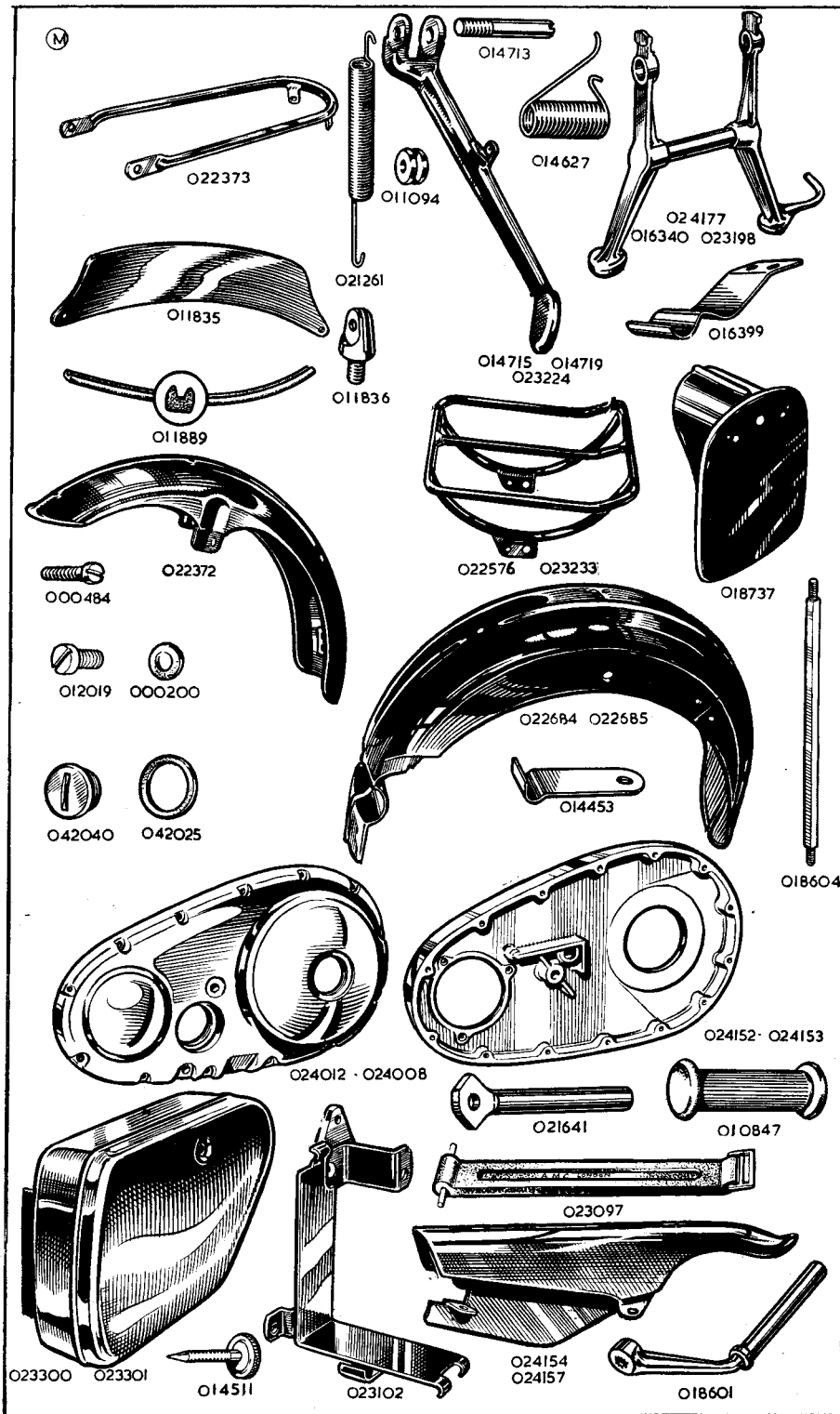
016340	Stand, centre, bare	1	G3LS, G80S,	...
024177	Stand, centre, bare	1	G9, G11	...
014629	Rod, for centre stand	1	G3LS, G80S, G9, G11	...
000002	Nut, centre stand rod	2	All	...
010912	Washer, spigot, centre stand rod	2	All	...
014626	Bush, for centre stand	2	G3LS, G80S, G9, G11	...
014630	Spacer, long, centre stand rod	1	G3LS, G80S, G9, G11	...
014627	Spring, return, for centre stand	1	All	...
016399	Spring, stop, for centre stand	1	All	...
012565	Bolt, fixing, centre stand stop spring	2	All	...
000039	Washer, stop, spring bolt	2	All	...

### PROP STAND

014715	Stand, prop, bare	1	G3LS, G80S	...
014719	Stand, prop, bare	1	G9, G11	...
014713	Bolt, hinge, prop stand	1	All	...
014139	Nut, hinge, bolt	1	All	...
000049	Pin, split, hinge bolt	1	All	...
021261	Spring, return, prop stand	1	All	...

### FRONT MUDGUARD

022372	Mudguard, front, bare	1	G3LS, G80S, G9, G11	...
022373	Stay, front, mudguard	1	G3LS, G80S, G9, G11	...
010795	Bolt, stay to fork slider	2	G3LS, G80S, G9, G11	...
000192	Washer, spring, stay to fork slider bolt	2	G3LS, G80S, G9, G11	...
000070	Bolt, stay to mudguard	2	G3LS, G80S, G9, G11	...
000191	Washer, spring, stay to mudguard bolt	2	G3LS, G80S, G9, G11	...
000012	Washer, plain, stay to mudguard bolt	2	G3LS, G80S, G9, G11	...
000005	Nut, stay to mudguard bolt	2	G3LS, G80S, G9, G11	...



PART NUMBER	DESCRIPTION	QTY.	USED ON	PRICE EACH £ s. d.
-------------	-------------	------	---------	-----------------------

### FRONT MUDGUARD—continued

010795	... Bolt, mudguard bridge to slider, right .....	2	All	...
000192	... Washer, mudguard bridge bolt .....	2	All	...
010624	... Stud, mudguard bridge to slider, left .....	2	All	...
000004	... Nut, mudguard bridge stud .....	2	All	...
014117	... Washer, shakeproof mudguard bridge stud .....	2	All	...

### REAR MUDGUARD

022684	... Rear mudguard (both portions with joint bolts) .....	1	G3LS, G80S, G9, G11	...
022388	... Rear mudguard, forward portion only .....	1	G3LS, G80S, G9, G11	...
021710	... Rear mudguard, rear portion only .....	1	G3LS, G80S, G9, G11	...
021098	... Bolt, for mudguard joint .....	3	G3LS, G80S, G9, G11	...
021099	... Washer, for mudguard joint .....	3	G3LS, G80S, G9, G11	...
022250	... Bracket, for bottom of rear mudguard .....	2	G3LS, G80S, G9, G11	...
000342	... Bolt, fixing bracket to rear mudguard, $\frac{1}{16}$ in. by $\frac{1}{4}$ in. by 26	2	G3LS, G80S, G9, G11	...
000012	... Washer, plain, for bracket fixing bolt .....	4	G3LS, G80S, G9, G11	...
000005	... Nut, for bracket fixing bolt .....	2	G3LS, G80S, G9, G11	...
000275	... Stud, fixing rear mudguard brackets to frame, $3\frac{2}{16}$ in. by $\frac{5}{16}$ in. by 26 .....	1	G3LS, G80S, G9, G11	...
000011	... Washer, plain, for bracket fixing stud .....	2	G3LS, G80S, G9, G11	...
000004	... Nut, for bracket fixing stud .....	2	G3LS, G80S, G9, G11	...
000346	... Bolt, fixing rear mudguard to frame loop bridge, $1\frac{7}{16}$ in. by $\frac{3}{4}$ in. by 26 .....	1	All	...
000191	... Washer, spring, for bridge fixing bolt .....	1	All	...
000005	... Nut, for bridge fixing bolt .....	1	All	...
000012	... Washer, plain, for bridge fixing bolt .....	1	All	...
000172	... Washer, plain, for bridge fixing bolt .....	1	All	...

### FRONT NUMBER PLATE

011835	... Plate, number, front .....	1	G3LS, G80S, G9, G11	...
011836	... Stud, fixing front number plate .....	2	All	...
000012	... Washer, plain, front number plate stud .....	2	All	...
000005	... Nut, front number plate stud .....	2	All	...
000861	... Screw, fixing front number plate to stud, $\frac{5}{16}$ in. by 2 BA	2	All	...
011889	... Fillet, rubber, front number plate .....	1	G3LS, G80S, G9, G11	...

### REAR NUMBER PLATE

018737	... Plate, number, rear, 8 in. wide .....	1	G3LS, G80S, G9, G11	...
000363	... Bolt, fixing rear number plate, $\frac{3}{8}$ in. by $\frac{5}{16}$ in. by 26	2	G3LS, G80S, G9, G11	...
000192	... Washer, spring, rear number plate bolt .....	2	G3LS, G80S, G9, G11	...

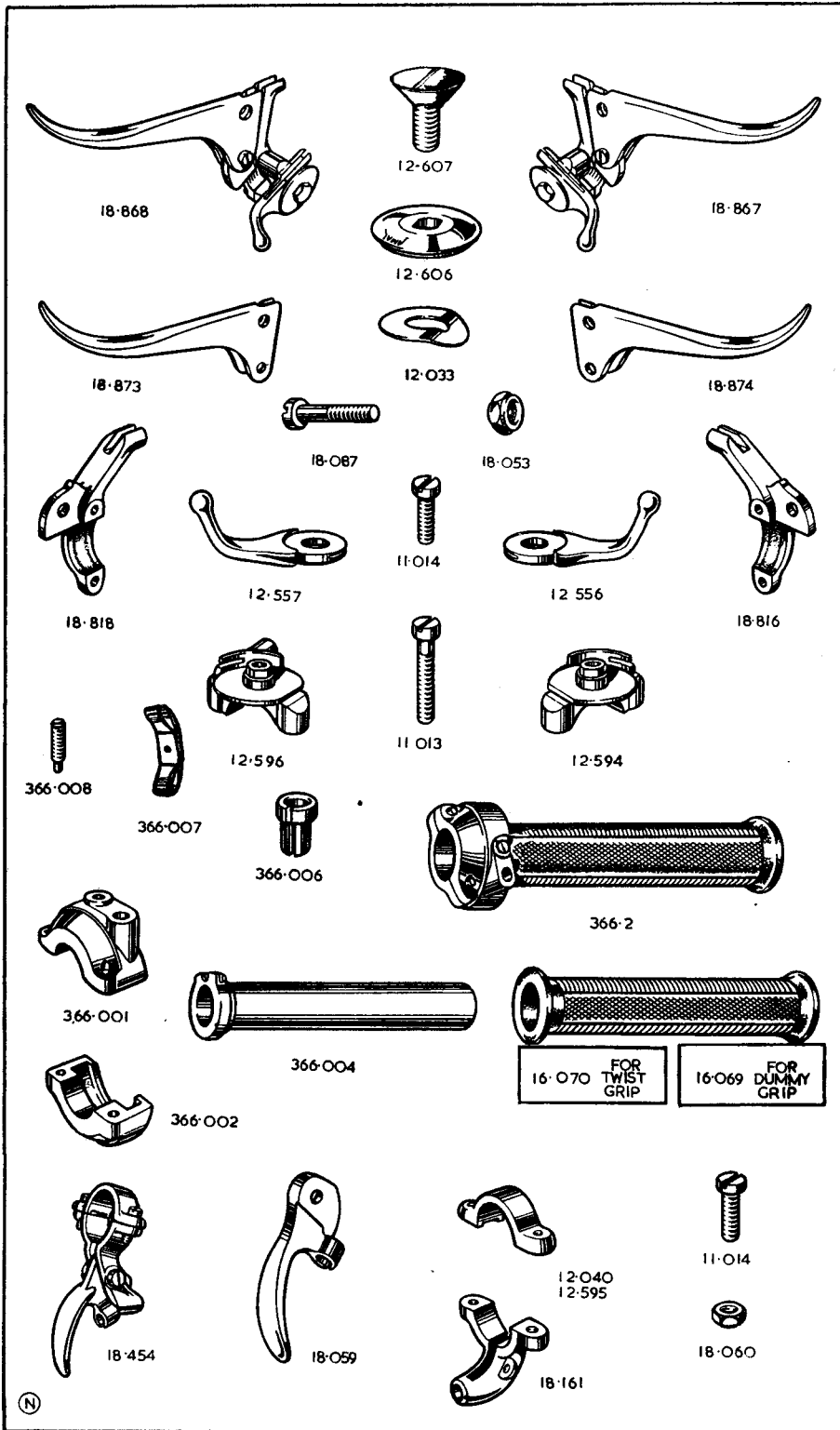
PART NUMBER	DESCRIPTION	QTY.	USED ON	PRICE EACH £ s. d.
<b>REAR CARRIER</b>				
023233	Carrier, rear, assembled (horizontal).....	1	G3LS, G80S, G9, G11	...
022576	Carrier, rear, assembled (inclined).....	1	G3LS, G80S, G9, G11	...
022738	Bolt, fixing carrier .....	2	G3LS, G80S, G9, G11	...
022737	Washer, carrier fixing bolt .....	2	G3LS, G80S, G9, G11	...
<b>FRONT CHAINCASE</b>				
024152	Chaincase, back half, assembled .....	1	G3LS, G80S	...
024153	Chaincase, back half, assembled .....	1	All Twins	...
024012	Chaincase, front half, only.....	1	G3LS, G80S	...
024008	Chaincase, front half, only.....	1	All Twins	...
024148	Screw, fixing chaincase to crankcase .....	3	G3LS, G80S and all Twins ...	...
022131	Washer, chaincase fixing screw .....	3	G3LS, G80S and all Twins ...	...
024136	Stud, chaincase centre .....	1	G3LS, G80S	...
024285	Stud, chaincase centre .....	1	All Twins	...
000004	Nut, chaincase centre stud .....	1	G3LS, G80S	...
024286	Nut, chaincase centre stud .....	1	All Twins	...
000011	Washer, chaincase centre stud.....	1	G3LS, G80S and all Twins ...	...
000484	Screw, joining chaincase halves .....	14	G3LS, G80S and all Twins ...	...
012019	Plug, drain .....	1	G3LS, G80S and all Twins ...	...
000200	Washer, fibre, drain plug .....	1	G3LS, G80S and all Twins ...	...
042040	Insection cap .....	2	G3LS, G80S and all Twins ...	...
042025	Gasket, inspection cap .....	2	G3LS, G80S and all Twins ...	...
024020	Gasket, chaincase joint .....	1	G3LS, G80S	...
024021	Gasket, chaincase joint .....	1	All Twins	...
024024	Gasket, chaincase centre stud .....	1	G3LS, G80S and all Twins ...	...
024023	Gaskets, centre boss to crankcase .....	1	G3LS, G80S	...
024022	Gaskets, centre boss to crankcase .....	1	All Twins	...
<b>REAR CHAINGUARD</b>				
024157	Chainguard, rear, only .....	1	G3LS, G80S	...
024154	Chainguard, rear, only .....	1	All Twins	...
000350	Bolt, fixing chainguard, at front .....	1	All	...
024218	Bolt, fixing chainguard at rear .....	1	All	...
023146	Nut, front fixing bolt.....	1	All	...
021578	Spacer, rear fixing bolt .....	1	All	...
021579	Washer, rear fixing bolt .....	1	All	...
023509	Washer, tab, front bolt.....	1	All	...
<b>BATTERY CARRIER</b>				
023102	Carrier, battery, back portion only .....	1	G3LS, G80S, G9, G11	...
023097	Carrier, battery, front strap.....	1	G3LS, G80S, G9, G11	...
000369	Bolt, battery carrier to frame .....	1	G3LS, G80S	...
000369	Bolt, battery carrier to frame .....	2	G9, G11	...
000349	Bolt, battery carrier to frame .....	1	G3LS, G80S, G9, G11	...
000004	Nut, for 000369 bolt .....	1	G3LS, G80S	...
000004	Nut, for 000369 bolt .....	2	G9, G11	...
000011	Washer, for 000004 nut.....	2	G3LS, G80S	...
000011	Washer, for 000004 nut.....	4	G9, G11	...
000005	Nut, for 000349 bolt .....	1	G3LS, G80S, G9, G11	...
000012	Washer, for 000005 nut.....	1	G3LS, G80S, G9, G11	...



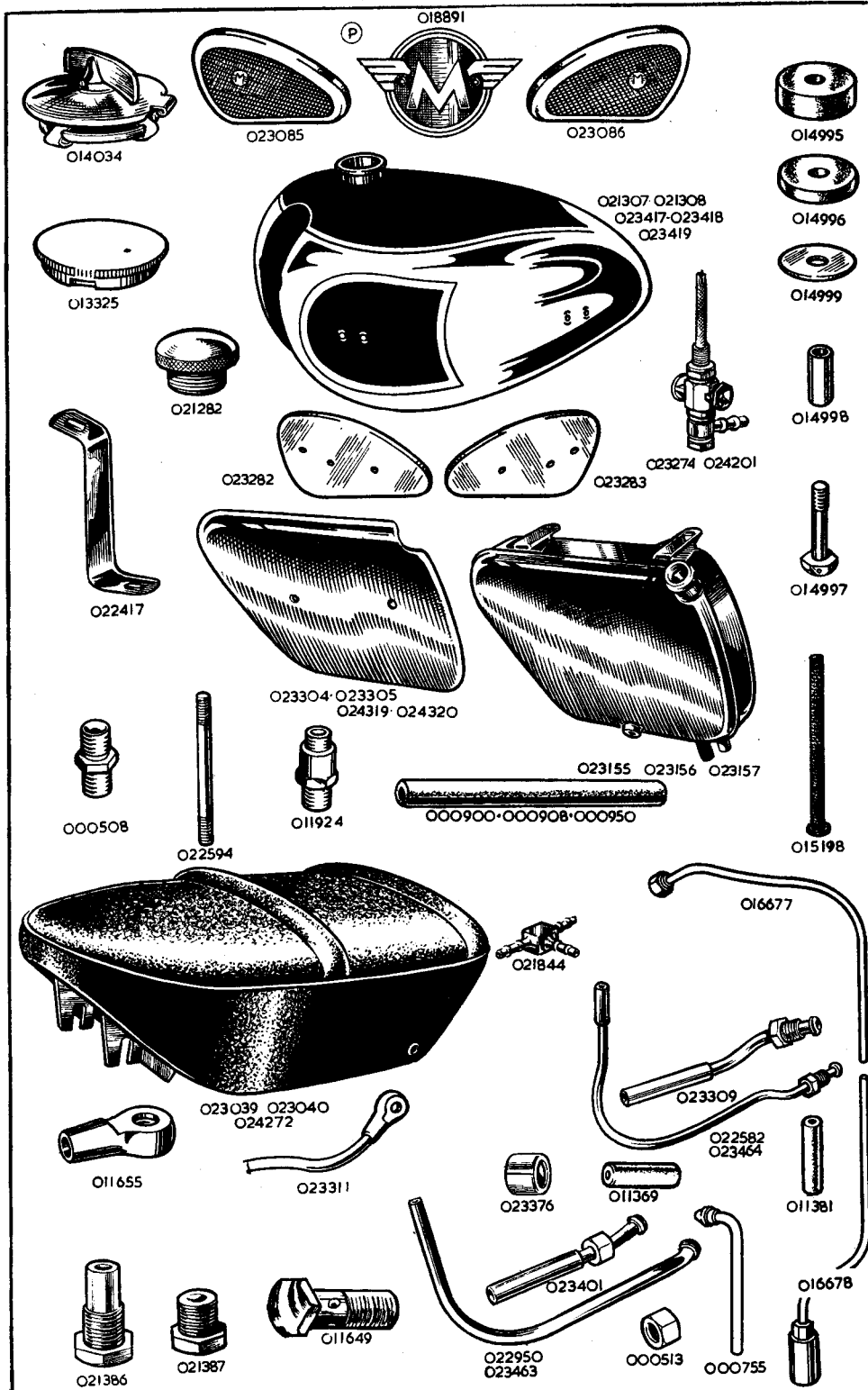
PART NUMBER	DESCRIPTION	QTY.	USED ON	PRICE EACH £ s. d.
<b>BATTERY CARRIER—continued</b>				
014577	Bolt, earthing cable	1	G3LS, G80S, G9, G11	...
000012	Washer, earthing cable bolt	1	G3LS, G80S, G9, G11	...
022721	Rubber, for battery carrier	1	G3LS, G802, G9, G11	...
<b>FOOTRESTS</b>				
018601	Arm, for footrest	2	G3LS, G80S, G9, G11	...
010847	Pad, rubber, for footrest arm	2	G3LS, G80S, G9, G11	...
018604	Rod, for footrests, overall length, 10½ in.	1	G3LS, G80S, G9, G11	...
010924	Spacer, 3½ in. long, for footrest rod, between rear engine plates	1	All	...
013837	Spacer, 1 in. long, for footrest, outside right	1	G3LS, G80S, G9, G11	...
010911	Spacer, 1⅜ in. long, for footrest, outside left	1	G3LS, G80S, G9, G11	...
000009	Washer, plain, for footrest rod	2	All	...
000002	Nut, for footrest rod	2	All	...
<b>PILLION FOOTRESTS (Optional equipment)</b>				
021984	Pillion footrests, complete	pair	1	G3LS, G80S, G9, G11
021641	Spindle, bare, pillion footrest	2	G3LS, G80S, G9, G11	...
011599	Bolt, hinge, for pillion footrest spindle, 1⅜ un. by ⅜ in. by 26	2	G3LS, G80S, G9, G11	...
000073	Nut, for pillion footrest hinge bolt	2	G3LS, G80S, G9, G11	...
010847	Pad, rubber, for pillion footrest spindle	2	G3LS, G80S, G9, G11	...
<b>SADDLE</b>				
023039	Twin seat	1	G3LS, G80S, G9, G11	...
023251	Screw, fixing twin seat	2	G3LS, G80S, G9, G11	...
022083	Nut, twin seat fixing screw	2	G3LS, G80S, G9, G11	...
000011	Washer, twin seat fixing screw	2	G3LS, G80S, G9, G11	...
<b>TOOL BOXES</b>				
023300	Box, tool, bare, with lid	1	G3LS, G80S, G9, G11	...
023327	Lid, only, for tool box (black)	1	G3LS, G80S, G9, G11	...
024317	Lid, only, for tool box (red)	1	G3LS, G80S, G9, G11	...
014511	Screw, knurled, for tool box lid	1	All	...
000189	Washer, spring, for tool box lid screw	1	All	...
000005	Nut, for tool box lid screw	2	All	...
000070	Bolt, fixing tool box, top and rear	2	G3LS, G80S, G9, G11	...
000005	Nut, tool box fixing bolt	2	G3LS, G80S, G9, G11	...
000012	Washer, tool box fixing bolt	4	G3LS, G80S, G9, G11	...
000070	Bolt, tool box, battery carrier	2	G3LS, G80S, G9, G11	...
000005	Nut, tool box, battery carrier bolt	2	G3LS, G80S, G9, G11	...
000012	Washer, tool box, battery carrier bolt	4	G3LS, G80S, G9, G11	...

PART NUMBER	DESCRIPTION	QTY.	USED ON	PRICE EACH £ s. d.
<b>TRANSFERS</b>				
024416	... Transfers, complete set .....	1	G3LS, G80S, G9 ... ..	
024419	... Transfers, complete set .....	1	G11 ... ..	
009197	... Transfer, for rear fork hinge (patent).....	1	All ... ..	
009199	... Transfer, for front forks (patent) .....	1	All ... ..	
009200	... Transfer, for front forks (made in England) .....	1	All ... ..	
009189	... Transfer, rear mudguard (Matchless) .....	1	All ... ..	
009188	... Transfer, for side of oil tank (motif) .....	1	All except G3CT ... ..	
023277	... Transfer, for oil tank (top level) .....	1	All except G3CT ... ..	
023279	... Transfer, for oil tank (low level) .....	1	All except G3CT ... ..	
023136	... Transfer, oil recommendation .....	1	All ... ..	
009205	... Transfer, top of petrol tank (Goocc) .....	1	G11 ... ..	
009188	... Transfer, for tool box lid (motif).....	1	All ... ..	
009195	... Transfer, for petrol tank (reserve) .....	1	All ... ..	
<b>BRAKE CABLE</b>				
023679	... Cable, assembled, front brake, standard bar.....	1	G3LS, G80S, G9, G11 ... ..	
023680	... Cable, assembled, front brake, Western bar.....	1	G3LS, G80S, G9, G11 ... ..	
011348	... Adjuster, front brake cable .....	1	All ... ..	
017217	... Nut, lock, front brake cable adjuster .....	1	All ... ..	
022550	... Sleeve, rubber, front brake cable .....	1	All ... ..	
<b>CLUTCH CABLE</b>				
024169	... Cable, assembled, clutch, standard bar .....	1	G3LS, G80S, G9, G11 ... ..	
024231	... Cable, assembled, clutch, Western bar .....	1	G3LS, G80S, G9, G11 ... ..	
014225	... Adjuster, clutch cable .....	1	All ... ..	
011373	... Nut, lock, clutch cable adjuster .....	1	All ... ..	
<b>VALVE LIFTER CABLE</b>				
023710	... Cable, assembled, valve lifter, standard bar .....	1	All Singles ... ..	
023703	... Cable, assembled, valve lifter, Western bar .....	1	All Singles ... ..	
014225	... Adjuster, valve lifter cable .....	1	All Singles ... ..	
011373	... Nut, lock, valve lifter cable adjuster .....	1	All Singles ... ..	
<b>THROTTLE CABLE</b>				
024170	... Cable, assembled, throttle, standard bar .....	1	G3LS, G9, G11 ... ..	
024232	... Cable, assembled, throttle, Western bar .....	1	G3LS, G9, G11 ... ..	
024171	... Cable, assembled, throttle, standard bar .....	1	G80S ... ..	
024245	... Cable, assembled, throttle, Western bar .....	1	G80S ... ..	
<b>AIR CABLE</b>				
023694	... Cable, assembled, air, standard bar.....	1	G3LS, G9, G11 ... ..	
023697	... Cable, assembled, air, Western bar.....	1	G3LS, G9, G11 ... ..	
023695	... Cable, assembled, air, standard bar.....	1	G80S ... ..	
023698	... Cable, assembled, air, Western bar.....	1	G80S ... ..	
<b>IGNITION CABLE</b>				
018749	... Cable, assembled, ignition, standard bar .....	1	All Twins ... ..	
023701	... Cable, assembled, ignition, Western bar .....	1	All Twins ... ..	
022728	... Sleeve, rubber, for control cables .....	2	G3LS, G80S, G9, G11 ... ..	

PART NUMBER	DESCRIPTION	QTY.	USED ON	PRICE EACH £ s. d.
<b>TWIST GRIP</b>				
366-2	... Twist grip, complete .....	1	All	...
366-001	... Body, twist grip, top half .....	1	All	...
366-002	... Body, twist grip, bottom half .....	1	All	...
366-004	... Rotor, twist grip.....	1	All	...
376-079	... Screw, fixing twist grip halves .....	2	All	...
366-007	... Spring, friction .....	1	All	...
366-008	... Screw, friction spring.....	1	All	...
366-006	... Stop, for cable.....	1	All	...
16-070	... Grip, for twist grip rotor .....	1	All	...
<b>DUMMY GRIP</b>				
16-069	... Grip, dummy, for left side handlebar .....	1	All	...
<b>BRAKE AND AIR CONTROL LEVERS</b>				
18-867	... Lever, assembly, brake and air.....	1	G3LS, G80S, G9, G11	...
18-816	... Bracket, for brake lever .....	1	G3LS, G80S, G9, G11	...
18-874	... Lever, only front brake .....	1	All	...
18-087	... Pin, fulcrum, front brake lever .....	1	All	...
18-053	... Nut, brake lever fulcrum pin .....	1	All	...
12-594	... Body, air control lever .....	1	All	...
12-556	... Lever only, air.....	1	All	...
12-607	... Bolt, air control lever .....	1	All	...
12-606	... Cap, air control lever .....	1	All	...
12-033	... Washer, spring, air lever cap .....	1	All	...
11-013	... Screw, clamping bracket, long .....	1	G3LS, G80S, G9, G11	...
11-014	... Screw, clamping bracket, short .....	1	G3LS, G80S, G9, G11	...
023707	... Adaptor, roller, for brake cable .....	1	All	...
<b>CLUTCH AND IGNITION CONTROL LEVERS</b>				
18-868	... Lever, assembly, clutch and ignition .....	1	All Twins	...
18-875	... Lever, assembly, clutch .....	1	All Singles	...
18-818	... Bracket, for clutch lever .....	1	All Twins	...
18-814	... Bracket, for clutch lever .....	1	All Singles	...
18-873	... Lever only, clutch .....	1	All	...
18-087	... Pin, fulcrum, clutch lever .....	1	All	...
18-053	... Nut, brake lever fulcrum pin .....	1	All	...
12-596	... Body, only ignition lever .....	1	All except G3LS, G80S	...
12-557	... Lever, only ignition .....	1	All except G3LS, G80S	...
12-607	... Bolt, ignition control lever .....	1	All except G3LS, G80S	...
12-606	... Cap, ignition control lever .....	1	All except G3LS, G80S	...
12-033	... Washer, spring, ignition lever cap .....	1	All except G3LS, G80S	...
11-013	... Screw, clamping bracket, long .....	1	All	...
11-014	... Screw, clamping brake, short .....	1	All	...
12-595	... Clamp, control lever bracket .....	1	All Single	...
023707	... Adaptor roller, for clutch cable .....	1	All	...
<b>VALVE LIFTER CONTROL LEVER</b>				
18-454	... Lever assembly, exhaust lifter .....	1	All Singles	...
18-161	... Bracket, only exhaust lifter .....	1	All Singles	...
18-059	... Lever, only exhaust lever .....	1	All Singles	...
11-014	... Pin, fulcrum, exhaust lifter lever.....	1	All Singles	...
18-060	... Nut, exhaust lever fulcrum pin .....	1	All Singles	...
12-040	... Clamp, exhaust lever body .....	1	All Singles	...
11-014	... Screw, exhaust lever body clamp .....	2	All Singles	...



PART NUMBER	DESCRIPTION	QTY.	USED ON	PRICE EACH £ s. d.
<b>PETROL TANK</b>				
021307	Tank, petrol, bare, enamelled, black	1	G3LS, G80S	...
023417	Tank, petrol, bare, enamelled, black	1	G9	...
023418	Tank, petrol, bare, enamelled, red	1	G11	...
023359	Panel, chrome, left side	1	G9, G11	...
023358	Panel, chrome, right side	1	G9, G11	...
023360	Bead, tank panel, red	2	G9	...
023362	Bead, tank panel, black	2	G11	...
018891	Motif, for petrol tank	2	G3LS, G80S, G9, G11	...
018896	Seating, for petrol tank motif	2	G3LS, G80S, G9, G11	...
000153	Screw, petrol tank motif	4	G3LS, G80S	...
023371	Screw, petrol tank motif	4	G9, G11	...
023085	Grip, rubber, for petrol tank, left side	1	G3LS, G80S, G9, G11	...
023086	Grip, rubber, for petrol tank, right side	1	G3LS, G80S, G9, G11	...
023282	Plate, for rubber grip, left side	1	G3LS, G80S, G9, G11	...
023283	Plate, for rubber grip, right side	1	G3LS, G80S, G9, G11	...
000348	Bolt, fixing, knee grip plate	4	G3LS, G80S	...
000070	Bolt, fixing, knee grip plate	4	G9, G11	...
000172	Washer, plain, $\frac{1}{2}$ in., knee grip plate bolt	4	G9, G11	...
000178	Washer, plain, $\frac{1}{4}$ in., knee grip plate bolt	2	G9, G11	...
000639	Spacer, knee grip plate bolt	2	G9, G11	...
013325	Cap, filler, for petrol tank	1	G3LS, G80S, G9, G11	...
023274	Tap, petrol, with filter and banjo	2	G3LS, G80S, G9, G11	...
000908	$1\frac{1}{8}$ in. Pipe (plastic), petrol feed	1	G3LS, G80S	...
000908	$1\frac{3}{8}$ in. pipe (plastic), petrol feed	1	G9, G11	...
021844	"T" piece union, for feed pipe	1	All	...
014997	Bolt, fixing, petrol tank	4	G3LS, G80S, G9, G11	...
014995	Rubber, thick, petrol tank fixing bolt	4	G3LS, G80S, G9, G11	...
014996	Rubber, thin, petrol tank fixing bolt	4	G3LS, G80S, G9, G11	...
014998	Sleeve, petrol tank fixing bolt	4	G3LS, G80S, G9, G11	...
014999	Washer, petrol tank fixing bolt	4	G3LS, G80S, G9, G11	...
017051	Wire, copper, petrol tank fixing bolt (coil)	Q	G3LS, G80S, G9, G11	...
<b>OIL TANK</b>				
023157	Tank, oil, bare	1	G3LS, G80S	...
023155	Tank, oil, bare	1	G9, G11	...
023304	Cover, for oil tank, black	1	G9, G11	...
024319	Cover, for oil tank, red	1	G9, G11	...
022632	Screw, for oil tank cover	2	All Twins	...
000203	Washer, fibre, oil tank cover screw	2	All Twins	...
000012	Washer, plain, oil tank cover screw	2	All Twins	...
021282	Cap, filler, for oil tank	1	All	...
021329	Washer, oil tank filler cap	1	All	...
012019	Plug, drain, for oil tank	1	All	...
000200	Washer, fibre, oil tank drain plug	1	All	...
000361	Bolt, fixing, oil tank top	1	All	...
014779	Washer, Shakeproof, oil tank top fixing bolt	1	G3LS, G80S, G9, G11	...
022417	Bracket, oil tank to seat tube	1	G3LS, G80S, G9, G11	...
000070	Bolt, oil tank bracket to seat tube	1	G3LS, G80S, G9, G11	...
000012	Washer, oil tank bracket bolt	1	G3LS, G80S, G9, G11	...



PART NUMBER	DESCRIPTION	QTY.	USED ON	PRICE EACH £ s. d.
<b>OIL PIPES</b>				
023401	... Pipe, oil feed .....	1	G3LS, G80S	...
023311	... Pipe, oil feed .....	1	G9, G11	...
000950	... 18 in. Hose, rubber, oil feed pipe .....	1	G3LS, G80S	...
000950	... 22 in. Hose, rubber, oil feed pipe .....	1	G9, G11	...
015198	... Filter, metal gauze, for oil feed pipe .....	1	All	...
011924	... Union, oil feed pipe .....	1	All Singles	...
015528	... Washer, oil feed union .....	1	All Singles	...
023309	... Pipe, oil return .....	1	G3LS, G80S	...
023311	... Pipe, oil return .....	1	G9, G11	...
000950	... 18 in. Hose, rubber, oil return pipe .....	1	G3LS, G80S, G9, G11	...
023376	... Ferrule, oil feed and return pipe hose .....	4	G3LS, G80S, G9, G11	...
000951	... 5 in. Sleeve, plastic oil feed and return pipes .....	1	G3LS, G80S, G9, G11	...
016677	... Pipe, rocker box oil feed, top portion .....	1	All Singles	...
016678	... Pipe, rocker box oil feed, bottom portion .....	1	All Singles	...
011381	... Connection, rubber, rocker oil feed pipes .....	1	All Singles	...
000513	... Nut, union, rocker feed pipe, top end .....	1	All Singles	...
017180	... Nut, union, rocker feed pipe, bottom end .....	1	All Singles	...
000755	... Pipe, oil discharge, for release valve .....	1	All Singles	...
022570	... Pipe, vent (chain oiler) .....	1	All	...
000900	... 7 $\frac{3}{4}$ in. Hose, vent pipe .....	1	All	...
011649	... Pin, banjo, retaining oil pipes to engine .....	2	All Twins	...
000183	... Washer, fibre, oil pipe banjo .....	4	All Twins	...

## WHEEL AND BRAKE SECTION

PART NUMBER	DESCRIPTION	QTY.	USED ON	PRICE EACH £ s. d.
<b>FRONT WHEEL</b>				
THE COMPLETE WHEELS LISTED BELOW COMPRISE:—				
Rim spokes, nipples, hub, hub disc, grease nipple, all bearings, and all brake parts including cover plate and expander lever, but does not include the tyre.				
024379	... Wheel, front, complete with all fittings .....	1	G3LS, G80S and all Twins	...
024381	... Wheel, front, bare, less all fittings .....	1	G3LS, G80S, and all Twins	...
024248	... Rim, front, 19 in. by 2 $\frac{1}{2}$ in., chrome .....	1	G3LS, G80S, and all Twins	...
021152	... Spoke, front wheel .....	40	G3LS, G80S, and all Twins	...
021154	... Nipple, front wheel spoke .....	40	All	...
024005	... Hub, front wheel, shell only with brake drum .....	1	All	...
000051	... Nipple, grease, front wheel hub .....	1	All	...
011090	... Tape, for 19 in. by 2 $\frac{1}{2}$ in. rim .....	1	G3LS, G80S, and all Twins	...
021464	... Disc, for right hand side of hub .....	1	All	...
<b>FRONT WHEEL BEARINGS</b>				
012825	... Spindle, with roller bearings, for front wheel .....	1	All	...
010579	... Oil seal, for front hub bearings .....	2	All	...
017219	... Ring, spring, locating front hub bearings .....	1	All	...
018093	... Cup, for front hub bearing oil-seal .....	2	All	...
018096	... Ring, retaining front hub bearing oil-seals .....	2	All	...
021279	... Nut, lock, for front hub bearing adjusting ring .....	1	All	...
021161	... Ring, adjusting, for front hub bearing .....	1	All	...
021931	... Nut, locating front brake cover plate .....	1	All	...
018071	... Nut, outside, securing front brake cover plate .....	1	All	...
000001	... Nut, front wheel spindle, left side .....	1	All	...
000008	... Washer, plain, front wheel spindle, left side .....	1	All	...

PART NUMBER	DESCRIPTION	QTY.	USED ON	PRICE
				EACH £ s. d.

### REAR WHEEL

THE COMPLETE WHEELS LISTED BELOW COMPRISE:—

Rim, spokes, nipples, hub, grease nipple and all bearings assembled, but Does **NOT** include the centre solid spindle, washers, spacers, nuts, brake parts, sprocket and brake drum, speedometer drive and tyre.

024383	... Wheel, rear, complete, chrome, with all fittings.....	1	G3LS, G80S, G9, G11	...
024384	... Wheel, rear, bare, chrome, less all fittings .....	1	G3LS, G80S, G9, G11	...
024249	... Rim, rear, 19 in. by 2½ in. chrome .....	1	G3LS, G80S, G9, G11	...
021691	... Spoke, rear wheel .....	40	G3LS, G80S, G9, G11	...
021693	... Nipple, rear wheel spoke .....	40	G3LS, G80S, G9, G11	...
023067	... Hub, rear wheel, shell only .....	1	G3LS, G80S, G9, G11	...
021582	... Disc, for right hand side of hub .....	1	All	...
000051	... Nipple, grease, for rear hub.....	1	All	...
011090	... Tape, for 19 in. rear rim .....	1	All	...

### REAR WHEEL BEARINGS

014868	... Bearings, roller, for rear hub (only sold as a complete bearing) .....	2	All	...
014387	... Oil seal, for rear hub bearings.....	2	All	...
010740	... Ring, spring, locating rear hub bearings.....	1	All	...
021585	... Ring, retaining rear hub bearing oil seals, small .....	1	All	...
018095	... Ring, retaining rear hub bearing oil seals, large .....	1	All	...
018094	... Cup, for rear hub bearing oil seal .....	1	All	...
012436	... Collar, spacing, between bearing and rear hub bearing oil seal .....	1	All	...
021586	... Spacer, 2- <sup>2</sup> / <sub>16</sub> in. long between the two bearings rear hub .....	1	All	...
021583	... Ring, adjusting, for rear hub bearings .....	1	All	...
021584	... Nut, lock, for rear hub bearing adjusting ring .....	1	All	...
021587	... Spindle, centre, solid, for rear wheel .....	1	All	except C/S
021608	... Spacer, on spindle, for oil seals .....	2	All	...
021594	... Spacer, on rear wheel solid spindle, for speedometer gearbox (carries nut).....	1	All	...
021593	... Nut, locking speedometer gearbox.....	1	All	...
021591	... Spacer, rear wheel solid spindle (abuts against fork end), speedometer side.....	1	All	...
014869	... Nut, for rear wheel solid spindle .....	1	All	...
021590	... Washer, for rear wheel solid spindle .....	1	All	...

### FRONT BRAKE

021744	... Drum, front brake (must be fitted at works) .....	1	All	...
021766	... Screw, fixing front brake drum to hub shell.....	5	All	...
011846	... Locknut, for brake drum screw .....	5	All	...
022257	... Plate, cover, front brake .....	1	All	...
021474	... Stay, front brake cover plate anchor .....	1	All	...
014807	... Bolt, fixing anchor stay to front cover plate, <sup>5</sup> / <sub>8</sub> in. by <sup>3</sup> / <sub>8</sub> in. by 26 .....	1	All	...
014119	... Washer, special, for anchor stay bolt .....	1	All	...
022261	... Pin, fulcrum, for brake shoes .....	1	All	...
021563	... Screw, front brake shoe pin .....	1	All	...
000009	... Washer, plain (inner for pin) .....	1	All	...

WHEN IN DOUBT REGARDING THE NAMES AND PART  
NUMBERS OF THE PARTS YOU REQUIRE, PLEASE SEND  
THE OLD PARTS TO SERVE AS PATTERNS.



PART NUMBER	DESCRIPTION	QTY.	USED ON	PRICE EACH £ s. d.
-------------	-------------	------	---------	-----------------------

### FRONT BRAKE—continued

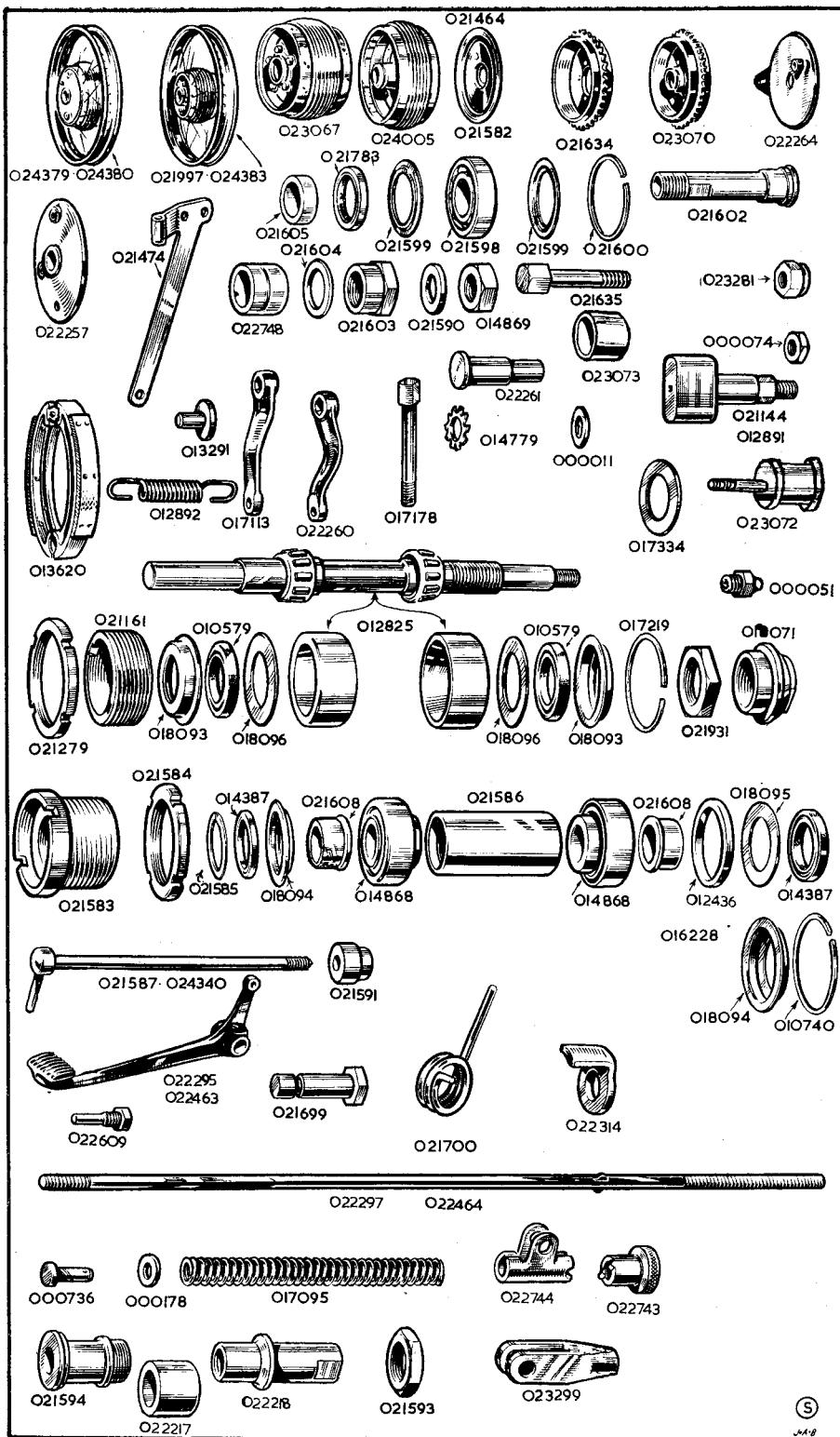
013620	Shoes, pair of, for front brake, with brake linings and thrust pins (only supplied in pairs) .....	per pair	1 All	...
013291	Pin, thrust, brake expander adjusting .....		2 All	...
000174	Washer, plain, for thrust pin .....		R All	...
022832	Linings, brake, per pair of, less rivets .....		1 All	...
000113	Rivets, for brake linings .....	per set of	14 All	...
012892	Spring, for brake shoes .....		2 All	...
021144	Expander, for brake shoes .....		1 All	...
017334	Washer, packing for expander bush .....		1 All	...
022260	Lever, for front brake shoe expander .....		1 All	...
000051	Nipple, grease, for brake shoe expander .....		1 All	...
000174	Washer, plain, for brake shoe expander .....		1 All	...
000004	Nut, for brake shoe expander .....		1 All	...

### REAR BRAKE

023070	Sprocket, and brake drum, for rear wheel, 42 teeth .....		1 G3LS, G80S, G9, G11	...
023072	Pin, driving, in hub .....		5 G3LS, G80S, G9, G11	...
023073	Bush, rear hub driving pin .....		5 G3LS, G80S, G9, G11	...
023281	Nut, rear hub driving pin .....		5 G3LS, G80S, G9, G11	...
022264	Plate, cover, rear, brake .....		1 All	...
022748	Spacer, for cover plate, outer .....		1 All	...
021605	Spacer, for cover plate, inner .....		1 G3LS, G80S, G9, G11	...
021598	Bearing, ball, for brake drum .....		1 G3LS, G80S, G9, G11	...
021599	Washer, for brake drum bearing .....		2 G3LS, G80S, G9, G11	...
021600	Circlip, for brake drum bearing .....		1 G3LS, G80S, G9, G11	...
021783	Oil seal, for brake drum bearing .....		1 G3LS, G80S, G9, G11	...
021602	Spindle, dummy, for bearing .....		1 G3LS, G80S, G9, G11	...
021603	Nut, for dummy spindle .....		G3LS, G80S, G9, G11	...
021604	Washer, for dummy spindle .....		1 G3LS, G80S, G9, G11	...
013620	Shoes, pair of, for rear brake, with linings and thrust pins (only supplied in pairs) .....	per pair	All	...
013291	Pin, thrust, brake expander adjusting .....		2 All	...
000174	Washer, plain, for thrust pin .....		R All	...
022832	Linings, brake, less rivets .....	per pair	1 All	...
000113	Rivets, for brake lining .....	per set of	14 All	...
012892	Spring, for brake shoes .....		2 All	...
012891	Expander, for brake shoes .....		1 All	...
017113	Lever, for rear brake shoe expander .....		1 All Singles	...
021473	Lever, for rear brake shoe expander .....		1 G9, G11	...
000174	Washer, plain, for brake shoe expander .....		1 All	...
000004	Nut, for brake shoe expander .....		1 All	...
000051	Nipple, grease, for brake shoe expander .....		1 All	...

### REAR BRAKE OPERATING PARTS

022293	Pedal, foot, for rear brake .....		1 G3LS, G80S	...
022609	Bolt, foot, pedal .....		1 All	...
021699	Fulcrum, rear, brake pedal .....		1 All	...
000051	Nipple, grease, for rear brake foot pedal .....		1 All	...
021700	Spring, return, rear brake pedal .....		1 All	...
022314	Stop, for rear brake pedal .....		1 All	...
022297	Rod, rear brake, bare .....		1 G3LS, G80S	...
023299	End, yoke, for rear end of brake rod .....		1 All	...
000736	Pin, for brake rod yoke end .....		1 All	...



PART NUMBER	DESCRIPTION	QTY.	USED ON	PRICE EACH £ s. d.
<b>REAR BRAKE OPERATING PARTS—continued</b>				
000014 ...	Pin, split, for brake rod yoke end pin .....	1	All ...	...
017095 ...	Spring, for brake rod.....	1	All ...	...
022744 ...	Clip, adjusting, for front end of brake rod .....	1	All ...	...
000736 ...	Pin, for brake rod adjusting clip .....	1	All ...	...
000014 ...	Pin, split, for brake rod adjusting cup pin.....	1	All ...	...
022743 ...	Nut, adjusting, for rear brake rod .....	1	All ...	...
000178 ...	Washer, brake top spring.....	1	All ...	...

## ELECTRICAL SECTION

PART NUMBER	DESCRIPTION	QTY.	USED ON	PRICE EACH £ s. d.
<b>HEAD LAMP</b>				
024394 ...	Lamp, head, with bulb, ammeter, and switch, less cable harness (home), Lucas 68135A.....	1	G3LS, G80S ...	...
024395 ...	Lamp, head, with bulb, ammeter and switch, less cable harness (export, not Europe), Lucas 58136A.....	1	G3LS, G80S ...	...
024396 ...	Lamp, head, with bulb, ammeter and switch, less cable harness (Europe, except France), Lucas 58137A .....	1	G3LS, G80S ...	...
024397 ...	Lamp, head, less bulb, with ammeter and switch, less cable harness (France), Lucas 58138A.....	1	G3LS, G80S ...	...
024398 ...	Lamp, head, with bulb, ammeter and switch, less cable harness (home), Lucas 58151A.....	1	G9, G11 ...	...
024399 ...	Lamp, head, with bulb ammeter and switch, less cable harness (export, not Europe), Lucas 58152A.....	1	G9, G11 ...	...
024400 ...	Lamp, head, with bulb, ammeter and switch, less cable harness (Europe, except France), Lucas 58153A .....	1	G9, G11 ...	...
024401 ...	Lamp, head, less bulb, with ammeter and switch, less cable harness (France), Lucas 58154A.....	1	G9, G11 ...	...
516972 ...	Shell only, top half, for headlamp .....	1	G3LS, G80S ...	...
516951 ...	Shell only, top half, for headlamp .....	1	G9, G11 ...	...
516973 ...	Shell only, bottom half, for headlamp.....	1	G3LS, G80S G9, G11 ...	...
553248 ...	Rim only, for headlamp .....	1	G3LS, G80S, G9, G11 ...	...
144921 ...	Screw, fixing headlamp rim .....	1	G3LS, G80S, G9, G11 ...	...
555309 ...	Light unit, reflector and glass (home) .....	1	G3LS, G80S, G9, G11 ...	...
516798 ...	Light unit, reflector and glass (export, not France).....	1	G3LS, G80S, G9, G11 ...	...
555275 ...	Light unit, reflector and glass (Europe, not France) ...	1	G3LS, G80S, G9, G11 ...	...
516802 ...	Light unit, reflector and glass (France) .....	1	G3LS, G80S, G9, G11 ...	...
554602 ...	Bulb holder (all except France) .....	1	G3LS, G80S, G9, G11 ...	...
552943 ...	Back shell, with bulb holder (France).....	1	G3LS, G80S, G9, G11 ...	...
112201 ...	Bolt, fixing lamp to fork covers .....	2	All ...	...
134499 ...	Washer, headlamp fixing bolt .....	1	All ...	...
<b>REAR LAMP</b>				
022126 ...	Lamp, rear, complete (Lucas L564).....	1	G3LS, G80S, G9, G11 ...	...
573839 ...	Window cover, red, for rear lamp .....	1	G3LS, G80S, G9, G11 ...	...
575200 ...	Window cover, white, for rear lamp .....	1	G3LS, G80S, G9, G11 ...	...
575208 ...	Gasket, rubber, for window cover .....	1	G3LS, G80S, G9, G11 ...	...

PART NUMBER	DESCRIPTION	QTY.	USED ON	PRICE EACH £ s. d.
<b>REAR LAMP—continued</b>				
552928	... Screw, retaining window cover .....	2	G3LS, G80S, G9, G11	...
575207	... Grommet, rubber, for bulb holder .....	1	G3LS, G80S, G9, G11	...
575209	... Bulb holder .....	1	G3LS, G80S, G9, G11	...
860428	... Wires, rear lamp, with Paxolin washer .....	1	G3LS, G80S, G9, G11	...
573825	... Cap, rubber, covering cable entry .....	1	G3LS, G80S, G9, G11	...
166014	... Nut, retaining lamp body to number plate .....	2	G3LS, G80S, G9, G11	...
188330	... Washer, lamp body retaining nut .....	2	G3LS, G80S, G9, G11	...
<b>VOLTAGE REGULATOR</b>				
024187	... Regulator, complete unit, Type 37252 .....	1	G9, G11	...
011094	... Grommet, for A.V.C. cable .....	1	G9, G11	...
024204	... Rubber shrouding .....	1	G9, G11	...
022720	... Rubber, tool box lid .....	1	G9, G11	...
024205	... Rubber, base support.....	1	G9, G11	...
<b>BATTERY</b>				
022345	... Battery, with lid (charged by dry), Lucas No. PUZE/9)	1	All	...
4159075	... Lid, only, but with rubber pads .....	1	All	...
<b>HORN</b>				
022529	... Horn, electric, with bracket.....	1	G3LS, G80S, G9, G11	...
012565	... Bolt, for horn .....	2	G3LS, G80S, G9, G11	...
000080	... Nut, for horn bolt .....	2	G3LS, G80S, G9, G11	...
000039	... Washer, for horn bolt .....	4	G3LS, G80S, G9, G11	...
<b>STOP LIGHT (Optional extra)</b>				
024437	... Complete kit, stop light parts .....	1	G3LS, G80S	...
022002	... Complete kit, stop light parts .....	1	G9, G11	...
018721	... Pull off spring for switch .....	1	All	...
022032	... Bracket, for switch .....	1	All	...
018764	... Clip for pull off spring .....	1	All	...
000738	... Screw, securing switch and pull off spring.....	3	All	...
000739	... Nut for switch and pull off spring screw .....	3	All	...
000039	... Washer, for switch screw .....	2	All	...
018220	... Extra rubber cable clip .....	1	All	...
011908	... Extra rubber cable clip .....	2	All	...
014453	... Metal cable clip .....	1	All	...
024376	... Cable (switch to lamp and battery), pair complete .....	1	G3LS, G80S	...
022836	... Cable (switch to lamp and battery), pair complete .....	1	All except G3LS, G80S	...
900269	... Snap connector (sleeve, sleeve rubber and two nipples)	1	All	...
022031	... Switch, for stoplight .....	1	All	...
<b>ALTERNATOR, ETC.</b>				
47122A	... Stator, generator .....	1	G3LS, G80S	...
024150	... Stud in chaincase, for generator stator .....	3	G3LS, G80S	...
011843	... Nut, for generator stator stud.....	3	G3LS, G80S	...
000012	... Washer, for generator stator stud .....	3	G3LS, G80S	...
041065	... Grommet, rubber, for stator cable.....	1	G3LS, G80S	...
423506	... Rotor, generator.....	1	G3LS, G80S	...
024026	... Spacer, for rotor.....	1	G3LS, G80S	...
042195	... Key, woodruff, generator rotor .....	1	G3LS, G80S	...
000230	... Nut, generator rotor.....	2	G3LS, G80S	...
000176	... Washer, generator rotor nut .....	1	G3LS, G80S	...

PART NUMBER	DESCRIPTION	QTY.	USED ON	PRICE EACH £ s. d.
-------------	-------------	------	---------	-----------------------

### ALTERNATOR, ETC. - continued

024183	... Contact breaker, complete (Lucas 47578)	1	G3LS ...	...
024273	... Contact breaker, complete (Lucas 47579)	1	G80S ...	...
465958	... Plate, contact breaker	1	G3LS, G80S	...
420196	... Points, contact breaker	set	G3LS, G80S	...
420302	... Condenser, contact breaker plate	1	G3LS, G80S	...
000451	... Screw, fixing contact breaker plate to timing case	2	G3LS, G80S	...
000039	... Washer, contact, plate fixing screw	2	G3LS, G80S	...
415729	... Weight, assembly	1	G3LS, G80S	...
424201	... Spring set, auto advance	set	G3LS	...
416136	... Spring set, auto advance	set	G80S	...
465939	... Cam, contact breaker	1	G3LS, G80S	...
024310	... Bolt, for contact breaker cam	1	G3LS, G80S	...
024326	... Washer, contact breaker cam bolt	1	G3LS, G80S	...
024327	... Washer, shakeproof, contact breaker cam bolt	1	G3LS, G80S	...
024159	... Grommet, rubber, contact breaker cable	1	G3LS, G80S	...
024251	... Rectifier, with bolt and nut (Lucas 47111)	1	G3LS, G80S	...
000214	... Nut, fixing rectifier	1	G3LS, G80S	...
014779	... Washer, shakeproof rectifier fixing nut	1	G3LS, G80S	...
024210	... Coil assembly (Lucas 45077)	1	G3LS, G80S	...
024212	... Strap, assembly for coil	1	G3LS, G80S	...
024213	... Screw, for coil strap	2	G3LS, G80S	...
024214	... Seat "D", for coil strap	4	G3LS, G80S	...
024215	... Nut, square, for coil strap screw	2	G3LS, G80S	...
024404	... Screw, rectifier lead	3	G3LS, G80S	...
024405	... Nut, rectifier lead screw	3	G3LS, G80S	...
024406	... Washer, rectifier lead screw	3	G3LS, G80S	...

### SPEEDOMETERS

022006	... Speedometer, trip, complete, 120 m.p.h.	1	G3LS, G80S, G9, G11	...
022010	... Speedometer, trip, complete, 180 k.p.h.	1	G3LS, G80S, G9, G11	...
021793	... Head only, speedometer, 120 m.p.h.	1	G3LS, G80S, G9, G11	...
021795	... Head only, speedometer, 180 k.p.h.	1	G3LS, G80S, G9, G11	...
53279-1	... Set of bulb holding parts for speedometer head	1	All	...
53205	... Bulb, only 6 volt, 1.8 watt m.c.b., for head ... P.T. 4d.	1	All	...
N-1253	... Nut, fixing speedometer head to bracket	2	All	...
W-7216	... Washer, speedometer head fixing nut	2	All	...
022057	... Bracket, retaining speedometer head in headlamp	1	G3LS, G80S, G9, G11	...
53395-1-65	... Cable, speedometer drive, complete	1	All	...
52108-1-65	... Cable, speedometer drive, inner only	1	All	...
53398-1-65	... Cable, speedometer drive, outer only	1	All	...
024448	... Gearbox, for speedometer, complete	1	All	...
021798	... Grommet, rubber, for speedometer head in headlamp	1	G3LS, G80S, G9, G11	...
021454	... Washer, outside speedometer gearbox	1	All	...
021799	... Grommet, rubber, for speedometer cable in fork crown	1	All	...

### CABLE CLIPS

011907	... Clip, rubber, $1\frac{1}{16}$ in.	7	All Singles	...
011907	... Clip, rubber, $1\frac{1}{16}$ in.	4	G9, G11	...
011908	... Clip, rubber, $3\frac{1}{4}$ in.	2	All	...
018220	... Clip, rubber, $4\frac{3}{4}$ in.	5	All Singles	...
018220	... Clip, rubber, $4\frac{3}{4}$ in.	6	G9, G11	...
014453	... Clip, metal, holding rear lamp cable inside mudguard	1	G3LS, G80S, G9, G11	...

### ELECTRICAL SUNDRIES

36084	... Ammeter, for headlamp	1	All	...
31443	... Switch, for lighting and ignition	1	G3LS, G80S	...
31763	... Switch, for lighting	1	G9, G11	...
351567	... Handle, with screw, for lighting switch	1	G9, G11	...
318341	... Key, for ignition switch	1	G3LS, G80S	...

PART NUMBER	DESCRIPTION	QTY.	USED ON	PRICE EACH £ s. d.
<b>ELECTRICAL SUNDRIES—continued</b>				
022548	Switch, dipping, and horn button combined	1	G3LS, G80S, G9, G11	...
380459	Packing, rubber, for dipping switch	1	G3LS, G80S, G9, G11	...
021299	Screw, fixing switch to handlebar	2	G3LS, G80S, G9, G11	...
865225	Harness cable, main lighting (no dipping or horn cable)	1	G3LS, G80S	...
837351	Harness, cable main lighting (no dipping, horn or regulator cables)	1	G9, G11	...
858795	Harness, cable, for dipping switch, triple	1	All	...
359218	Cable for horn	1	All	...
860595	Harness, cable for regulator	1	All Twins	...
016681	Sheath, for horn cable	1	All	...
000543	Cable, high tension for sparking plug	per ft.	R All	...
000541	Terminal, for high tension cable	R	All	...
900269	Connector, snap, for rear lamp and regulator cable	R	All	...
011094	Bush, rubber, rear lamp cable	1	All	...
015547	Plug, sparking, FE80 K.L.G.	1	G3LS, G80S	...
015547	Plug, sparking, FE80 K.L.G.	2	All Twins	...
021310	Cover, for dynamo terminals	1	All Twins	...
018895	Interference suppressor	R	All	...
312	Bulb, headlamp, main, 6 volt, 30 by 24 watt	1	G3LS, G80S, G9, G11	...
			Purchase Tax	...
988	Bulb, headlamp, pilot, 6 volt, 3 watt	1	G3LS, G80S, G9, G11	...
			Purchase Tax	...
384	Bulb, rear lamp, 6 volt, 18 by 6 watt, D.C.	1	All	...
			Purchase Tax	...

## ACCESSORY SECTION

PART NUMBER	DESCRIPTION	QTY.	USED ON	PRICE EACH £ s. d.
<b>TOOL KIT COMPLETE</b>				
024385	Tool kit, with tyre inflator	1	G3LS, G80S	...
024386	Tool kit, with tyre inflator	1	All Twins	...
024388	Tool kit, less tyre inflator	1	G3LS, G80S	...
024389	Tool kit, less tyre inflator	1	All Twins	...
<b>TOOLS</b>				
017253	Bag, for tools	1	All	...
021625	Screwdriver	1	All	...
017248	Pliers, side cutting	1	All	...
011188	Pliers, for gudgeon pin circlips	1	All	...
017246	Gun, grease	1	All	...
017114	Inflator, tyre	1	All	...
017052	Spanner, double end, $\frac{3}{16}$ in. by $\frac{1}{4}$ in.	2	All Singles	...
017052	Spanner, double end, $\frac{3}{16}$ in. by $\frac{1}{4}$ in.	1	All Twins	...
017053	Spanner, double end, $\frac{3}{16}$ in. by $\frac{3}{8}$ in.	1	All	...
017007	Lever, tyre	2	All	...
018178	Spanner, double end, 1-010 in. by 1-2 in.	1	All	...
017257	Spanner, double end, $\frac{3}{16}$ in. by .375 in.	1	All	...
023284	Spanner, for frame stay unit	1	All	...
017252	Spanner, box, with tommy bar, for sparking plug	1	All	...
018055	Allen key, for handlebar clip screw	1	All	...
017249	Wrench, adjustable	1	All	...
018667	Allen key, for fork crown pinch bolt	1	All	...
015264	Spanner, rocker spindle lock nut	1	All Twins	...
015213	Spanner, box, $\frac{3}{16}$ in.	1	All Twins	...
017254	Spanner, dynamo and clutch	1	All	...
000174	Washer, brake shoe pad adjustment	8	All	...
015023	Spanner and gauge, for magneto	1	All Twins	...
024365	Gauge, feeler, for contact set	1	G3LS, G80S	...

PART NUMBER	DESCRIPTION	QTY.	USED ON	PRICE EACH £ s. d.
-------------	-------------	------	---------	-----------------------

### SPECIAL TOOLS

017482	... Holder, valve, for grinding .....	1	All Singles	...
011381	... Holder, valve, for grinding .....	1	All Twins	...
018276	... Compressor, for valve spring removal .....	1	All Singles	...
022011	... Disc timing (see Instruction Book) .....	1	All	...
015273	... Extractor, for timing pinion and magneto gear .....	1	All Twins	...
015374	... Extractor, for camshaft gears .....	1	All Twins	...
024328	... Extractor, bolt for contact breaker.....	1	G3LS, G80S	...

The above tools are NOT included in the equipment of a new motorcycle of a "complete" tool kit.

### VARIOUS EQUIPMENT

018691	... Bar locking, for fork crown .....	1	All	...
023271	... Crash bar, kit complete.....	1	G3LS, G80S, G9, G11	...
023226	... Bar, only .....	1	G3LS, G80S, G9, G11	...
023232	... Bolt, top for crash bar .....	1	G3LS, G80S, G9, G11	...
023231	... Distance piece, crash bar .....	1	G3LS, G80S, G9, G11	...
023238	... Bracket, bottom assembled, for crash bar .....	1	G3LS, G80S, G9, G11	...
023348	... Stud, bottom (frame uniting), for crash bar .....	1	G3LS, G80S, G9, G11	...
000009	... Washer, plain, top fixing bolt .....	2	G3LS, G80S, H9, G11	...
000002	... Nut, top fixing bolt .....	1	G3LS, G80S, G9, G11	...
023466	... Panniers, complete set, frames, bags and fittings..... set	1	G3LS, G80S, G9, G11	...
	plus P.T.			...
022824	... Bag, pannier, only, left or right .....	2	G3LS, G80S, G9, G11	...
	plus P.T.			...
023289	... Frame, only, for pannier bag, left .....	1	G3LS, G80S, G9, G11	...
023290	... Frame, only, for pannier bag, right.....	1	G3LS, G80S, G9, G11	...
022827	... Bolt, fixing frames, at bottom .....	2	G3LS, G80S, G9, G11	...
000347	... Bolt, fixing frames, at top.....	2	G3LS, G80S, G9, G11	...
000073	... Nut, bottom fixing bolt .....	2	G3LS, G80S, G9, G11	...
018160	... Nut, top fixing bolt .....	2	G3LS, G80S, G9, G11	...
000012	... Washer, top fixing bolt.....	2	G3LS, G80S, G9, G11	...
011957	... "Tekall", rust preventative, ½ pint .....	R	All	...
011958	... "Tekall", rust preventative, 1 pint .....	R	All	...
B.M.H.	... Badge, monogram, Matchless, for button hole .....	R	All	...
B.M.B.	... Badge, monogram, Matchless, for brooch .....	R	All	...
	Instruction manual .....	R	All	...

### TANK PANELS (Optional equipment for G3LS-G80S)

024402	... Panel set, comprising following parts .....	set	1	G3LS, G80S	...
024313	... Panel, left (off-white) .....	1	1	G3LS, G80S	...
024314	... Panel, right (off-white) .....	1	1	G3LS, G80S	...
023360	... Bead, for tank panel (red).....	2	2	G3LS, G80S	...
023371	... Screw, for tank motif.....	4	4	G3LS, G80S	...
000070	... Bolt, for knee-grip plates .....	4	4	G3LS, G80S	...
000172	... Washer, large, for knee-grip plates.....	4	4	G3LS, G80S	...
000178	... Spacer, thin, for knee-grip plates .....	2	2	G3LS, G80S	...
000639	... Spacer, thick, for knee-grip plates .....	2	2	G3LS, G80S	...

PART NUMBER	DESCRIPTION	QTY.	USED ON	PRICE EACH £ s. d.
-------------	-------------	------	---------	-----------------------

### GASKET SETS

023291	... Set of decarbonising gaskets (1)	1	G3LS, G80S	...
023170	... Set of decarbonising gaskets (2)	1	All Twins	...
024426	... Set of overhaul gaskets (3)	1	G3LS, G80S	...
024429	... Set of overhaul gaskets (4)	1	All Twins	...

These sets contain the following:—

- (1) 1—Rocker box gasket.  
1—Head gasket.  
1—Base washer.  
2—Rubbers, for top of push rod cover tubes.  
2—Rubbers, for bottom of push rod cover tubes.  
1—Rubber fillet, rocker side cover.  
1—Gasket, carburetter spacer.  
3—Washers, fibre, side cover nuts.
- (2) 2—Gasket, for cylinder head.  
2—Base washers.  
4—Rocker cover gaskets.  
2—Gaskets, carburetter manifold.
- (3) All above and including the following:—  
1—Washer, timing gear cover.  
2—Washers, pump end cap.  
1—Carburetter flange ring.  
3—Fibre washers, oil plug screw.  
1—Washer, oil tank cap.  
1—Washer, oil tank drain plug.  
1—Washer, oil feed pipe union.  
1—Gasket, chaincase centre stud.  
1—Gasket, chaincase halves.  
1—Gasket, chaincase to crankcase.  
2—Gasket, chaincase inspection cap.  
1—Washer, chaincase drain plug.
- (4) All above and including the following:—  
2—Washers, paper (oval), for pump plate.  
1—Washer, paper (round), for pump plate.  
2—Washer, paper, oil pump bodies.  
2—Washer, banjo pin adaptor.  
1—Washer, paper, oil filter chamber.  
1—Washer, sealing dynamo-joint.  
1—Washer, sealing magneto-joint.  
1—Carburetter flange ring.  
1—Gasket, chaincase centre stud.  
1—Gasket, chaincase-joint.  
1—Gasket, chaincase to crankcase.  
2—Gasket, chaincase inspection cap.  
1—Washer, oil tank cap.  
1—Washer, crankcase drain plug.  
1—Washer, oil tank drain plug.  
4—Washer, oil feed banjo pins.

BY USING GENUINE SPARES YOU ARE ASSURED THEY  
WILL FIT ACCURATELY AND GIVE SATISFACTORY SERVICE



## SERVICE

The **Service and Repair Department** is situated in **Burrage Grove, Plumstead, London, S.E.18.** **Burrage Grove** is the first turning on the left from Burrage Road when entering Burrage Road from the Plumstead Road. (See final paragraph below.)

The nearest Railway Station is **WOOLWICH ARSENAL, SOUTHERN REGION RAILWAY.** This Station is five minutes' walk from our Service Depot in Burrage Grove. There is an excellent service of electric trains from Charing Cross, Waterloo, Cannon Street and London Bridge Stations, Southern Region Railway.

Bus routes 53, 54, 163, 99, 122, 122a, 177 and Trolleybus routes 696 and 698, pass the end of Burrage Road (one minute from the Service Depot).

Bus routes 186, 75 and 161 serve **Beresford Square** which is three minutes' walk from the **Service and Repair Department.**

Visitors from the North can pass into Woolwich via the Free Ferry between North Woolwich and Woolwich. North Woolwich is a British Railways terminus and is also served by Bus and Trolleybus routes 101, 569, 669 and 685. There is also a tunnel under the River Thames at this point for foot passengers. The Free Ferry accommodates all types of motor vehicles and there is a very frequent service. The Southern landing stage is less than a mile from the Service Depot.

Visitors arriving by road, if they are strangers to the locality, should enquire for **Beresford Square, Woolwich.** Upon arrival there, the road skirting the Royal Arsenal should be followed in an Easterly direction for about four hundred yards, and Burrage Road is the second turning on the right after leaving the Square. Burrage Grove is then the first turning on the left.

# INDEX

<table border="0" style="width: 100%;"> <tr> <td><b>BADGES</b></td> <td style="text-align: right;">Page</td> </tr> <tr> <td>Coat ... ..</td> <td style="text-align: right;">55</td> </tr> <tr> <td><b>BRAKES</b></td> <td></td> </tr> <tr> <td>Cables ... ..</td> <td style="text-align: right;">42</td> </tr> <tr> <td>Front ... ..</td> <td style="text-align: right;">48 - 49</td> </tr> <tr> <td>Levers ... ..</td> <td style="text-align: right;">43</td> </tr> <tr> <td>Rear ... ..</td> <td style="text-align: right;">49</td> </tr> <tr> <td>Rods ... ..</td> <td style="text-align: right;">49</td> </tr> <tr> <td><b>CABLES</b></td> <td></td> </tr> <tr> <td>Clips ... ..</td> <td style="text-align: right;">53</td> </tr> <tr> <td>Control ... ..</td> <td style="text-align: right;">42</td> </tr> <tr> <td>Electric ... ..</td> <td style="text-align: right;">54</td> </tr> <tr> <td>Speedometer ... ..</td> <td style="text-align: right;">53</td> </tr> <tr> <td><b>CARBURETTORS</b></td> <td></td> </tr> <tr> <td>Air Cleaners ... ..</td> <td style="text-align: right;">25</td> </tr> <tr> <td>Complete ... ..</td> <td style="text-align: right;">23</td> </tr> <tr> <td>Jets ... ..</td> <td style="text-align: right;">23</td> </tr> <tr> <td>Mixing Bodies ... ..</td> <td style="text-align: right;">23</td> </tr> <tr> <td>Valves ... ..</td> <td style="text-align: right;">23</td> </tr> <tr> <td><b>CARRIAGE</b> Charges ... ..</td> <td style="text-align: right;">2</td> </tr> <tr> <td><b>CARRIERS</b></td> <td></td> </tr> <tr> <td>Battery ... ..</td> <td style="text-align: right;">40</td> </tr> <tr> <td>Luggage ... ..</td> <td style="text-align: right;">40</td> </tr> <tr> <td>Panniers ... ..</td> <td style="text-align: right;">55</td> </tr> <tr> <td><b>CHAINS</b></td> <td></td> </tr> <tr> <td>Complete ... ..</td> <td style="text-align: right;">27</td> </tr> <tr> <td>Links ... ..</td> <td style="text-align: right;">27</td> </tr> <tr> <td><b>CORRESPONDENCE</b></td> <td></td> </tr> <tr> <td>Instructions ... ..</td> <td style="text-align: right;">3</td> </tr> <tr> <td><b>DAMPERS</b></td> <td></td> </tr> <tr> <td>Rear Leg... ..</td> <td style="text-align: right;">36</td> </tr> <tr> <td>Steering ... ..</td> <td style="text-align: right;">36 - 37</td> </tr> <tr> <td><b>ELECTRICAL</b></td> <td></td> </tr> <tr> <td>Alternator ... ..</td> <td style="text-align: right;">52</td> </tr> <tr> <td>Battery ... ..</td> <td style="text-align: right;">52</td> </tr> <tr> <td>Battery Carriers ... ..</td> <td style="text-align: right;">40</td> </tr> <tr> <td>Bulbs ... ..</td> <td style="text-align: right;">54</td> </tr> <tr> <td>Cable Clips ... ..</td> <td style="text-align: right;">53</td> </tr> <tr> <td>Contact Breaker ... ..</td> <td style="text-align: right;">53</td> </tr> <tr> <td>Dynamo (twins) ... ..</td> <td style="text-align: right;">20</td> </tr> <tr> <td>Horns ... ..</td> <td style="text-align: right;">52</td> </tr> <tr> <td>Lamps, Head ... ..</td> <td style="text-align: right;">51</td> </tr> <tr> <td>Lamps, Tail ... ..</td> <td style="text-align: right;">51</td> </tr> <tr> <td>Magneto (twins) ... ..</td> <td style="text-align: right;">20</td> </tr> <tr> <td>Rotor ... ..</td> <td style="text-align: right;">52</td> </tr> <tr> <td>Sparking Plug ... ..</td> <td style="text-align: right;">54</td> </tr> <tr> <td>Stator ... ..</td> <td style="text-align: right;">52</td> </tr> <tr> <td>Sundries ... ..</td> <td style="text-align: right;">54</td> </tr> <tr> <td>Switches ... ..</td> <td style="text-align: right;">54</td> </tr> <tr> <td>Voltage Regulator ... ..</td> <td style="text-align: right;">52</td> </tr> </table>	<b>BADGES</b>	Page	Coat ... ..	55	<b>BRAKES</b>		Cables ... ..	42	Front ... ..	48 - 49	Levers ... ..	43	Rear ... ..	49	Rods ... ..	49	<b>CABLES</b>		Clips ... ..	53	Control ... ..	42	Electric ... ..	54	Speedometer ... ..	53	<b>CARBURETTORS</b>		Air Cleaners ... ..	25	Complete ... ..	23	Jets ... ..	23	Mixing Bodies ... ..	23	Valves ... ..	23	<b>CARRIAGE</b> Charges ... ..	2	<b>CARRIERS</b>		Battery ... ..	40	Luggage ... ..	40	Panniers ... ..	55	<b>CHAINS</b>		Complete ... ..	27	Links ... ..	27	<b>CORRESPONDENCE</b>		Instructions ... ..	3	<b>DAMPERS</b>		Rear Leg... ..	36	Steering ... ..	36 - 37	<b>ELECTRICAL</b>		Alternator ... ..	52	Battery ... ..	52	Battery Carriers ... ..	40	Bulbs ... ..	54	Cable Clips ... ..	53	Contact Breaker ... ..	53	Dynamo (twins) ... ..	20	Horns ... ..	52	Lamps, Head ... ..	51	Lamps, Tail ... ..	51	Magneto (twins) ... ..	20	Rotor ... ..	52	Sparking Plug ... ..	54	Stator ... ..	52	Sundries ... ..	54	Switches ... ..	54	Voltage Regulator ... ..	52
<b>BADGES</b>	Page																																																																																																			
Coat ... ..	55																																																																																																			
<b>BRAKES</b>																																																																																																				
Cables ... ..	42																																																																																																			
Front ... ..	48 - 49																																																																																																			
Levers ... ..	43																																																																																																			
Rear ... ..	49																																																																																																			
Rods ... ..	49																																																																																																			
<b>CABLES</b>																																																																																																				
Clips ... ..	53																																																																																																			
Control ... ..	42																																																																																																			
Electric ... ..	54																																																																																																			
Speedometer ... ..	53																																																																																																			
<b>CARBURETTORS</b>																																																																																																				
Air Cleaners ... ..	25																																																																																																			
Complete ... ..	23																																																																																																			
Jets ... ..	23																																																																																																			
Mixing Bodies ... ..	23																																																																																																			
Valves ... ..	23																																																																																																			
<b>CARRIAGE</b> Charges ... ..	2																																																																																																			
<b>CARRIERS</b>																																																																																																				
Battery ... ..	40																																																																																																			
Luggage ... ..	40																																																																																																			
Panniers ... ..	55																																																																																																			
<b>CHAINS</b>																																																																																																				
Complete ... ..	27																																																																																																			
Links ... ..	27																																																																																																			
<b>CORRESPONDENCE</b>																																																																																																				
Instructions ... ..	3																																																																																																			
<b>DAMPERS</b>																																																																																																				
Rear Leg... ..	36																																																																																																			
Steering ... ..	36 - 37																																																																																																			
<b>ELECTRICAL</b>																																																																																																				
Alternator ... ..	52																																																																																																			
Battery ... ..	52																																																																																																			
Battery Carriers ... ..	40																																																																																																			
Bulbs ... ..	54																																																																																																			
Cable Clips ... ..	53																																																																																																			
Contact Breaker ... ..	53																																																																																																			
Dynamo (twins) ... ..	20																																																																																																			
Horns ... ..	52																																																																																																			
Lamps, Head ... ..	51																																																																																																			
Lamps, Tail ... ..	51																																																																																																			
Magneto (twins) ... ..	20																																																																																																			
Rotor ... ..	52																																																																																																			
Sparking Plug ... ..	54																																																																																																			
Stator ... ..	52																																																																																																			
Sundries ... ..	54																																																																																																			
Switches ... ..	54																																																																																																			
Voltage Regulator ... ..	52																																																																																																			

 |                         |         | |-------------------------|---------| | <b>ENGINE (Singles)</b> | Page    | | Axles ... ..            | 6       | | Bearings ... ..         | 8       | | Big-end ... ..          | 6       | | Bolts ... ..            | 8       | | Bush, Gudgeon ... ..    | 6       | | Connecting Rod ... ..   | 6       | | Cover Tubes ... ..      | 9       | | Crankcases ... ..       | 6       | | Crankpin ... ..         | 6       | | Cylinders ... ..        | 5       | | Cylinder Heads... ..    | 5       | | Flywheels ... ..        | 6       | | Gaskets ... ..          | 56      | | Oil Pump ... ..         | 8       | | Push Rods ... ..        | 9       | | Re-boring ... ..        | 6       | | Release Valve ... ..    | 8       | | Rings, Piston ... ..    | 5       | | Rocker Box ... ..       | 9       | | Rocker Box Stay ... ..  | 11      | | Rockers ... ..          | 9       | | Tappets ... ..          | 9       | | Timing Gear ... ..      | 8       | | Valve Lifter ... ..     | 11      | | Valves ... ..           | 5       | | <b>ENGINE (Twins)</b>   |         | | Bearings ... ..         | 14      | | Crankcase ... ..        | 11 - 12 | | Crankshaft ... ..       | 14      | | Connecting Rods ... ..  | 14      | | Cylinders ... ..        | 14      | | Cylinder Heads ... ..   | 14      | | Gaskets ... ..          | 56      | | Oil Pumps ... ..        | 17 - 18 | | Push Rods ... ..        | 16      | | Release valve ... ..    | 25      | | Rings (piston) ... ..   | 14      | | Rockers ... ..          | 15      | | Timing Gear ... ..      | 15      | | Valves ... ..           | 14      | | <b>FORKS</b>            |         | | Front ... ..            | 35 - 36 | | Front Assemblies ... .. | 35      | | Rear ... ..             | 33      | | <b>FOOTRESTS</b>        |         | | Pillion ... ..          | 41      | | Riders ... ..           | 41      | |

# INDEX

<b>FRAME</b>	Page	<b>REPAIRS</b>	Page
Bolts (singles) ... ..	8	Conditions of ... ..	3
Bolts (twin) ... ..	20 - 21	Proprietary Parts ... ..	3
Plates (singles) ... ..	8	<b>RUST PREVENTATIVE</b>	
Plates (twins) ... ..	20 - 21	Tekal ... ..	55
Front Frame ... ..	33	<b>SEATS</b> Riders ... ..	41
Rear Fork ... ..	33	<b>SERVICE</b>	
Rear Frame ... ..	33	Details ... ..	2
<b>GASKETS</b> Sets of ... ..	56	Location ... ..	57
<b>GEAR BOX</b>		<b>SILENCERS</b>	
Bearings ... ..	29	Silencers (Singles) ... ..	11
Clutch ... ..	31	Silencers (Twins) ... ..	21
Clutch Operating Parts ... ..	31	<b>SPARES</b> How to order ... ..	2
Fixing Parts ... ..	27	<b>SPEEDOMETER</b>	
Gear Operating Parts ... ..	29	Complete ... ..	53
Gears ... ..	27 to 29	Components ... ..	53
Kickstarter ... ..	31	<b>SPROCKETS</b>	
Shafts ... ..	27 to 29	Clutch ... ..	31
Shells ... ..	27	Engine ... ..	25
Small Sprockets ... ..	29	Gear Box ... ..	29
<b>GUARANTEE</b> Terms of ... ..	3	Rear Wheel ... ..	49
<b>GUARDS</b>		<b>STANDS</b>	
Chaincase, Front ... ..	40	Centre ... ..	37
Chainguard, Rear ... ..	40	Prop ... ..	37
Mudguard, Front ... ..	37	<b>TANKS</b>	
Mudguard, Rear ... ..	39	Oil ... ..	45
<b>HANDLEBAR</b>		Petrol ... ..	45
Bar only ... ..	37	<b>TERMS OF BUSINESS</b>	
Control Levers ... ..	43	Details ... ..	2
Grips ... ..	43	<b>TOOLS</b>	
<b>IDENTIFICATION</b>		Boxes ... ..	41
Machine Numbers ... ..	2	Complete Kits ... ..	54
<b>INSTRUCTION BOOK</b>		Separate Tools ... ..	54
Details of ... ..	3	Special Tools ... ..	55
<b>LEG</b> Rear ... ..	36	<b>TRANSFERS</b>	
<b>LEVERS</b> Control ... ..	43	Complete Sets ... ..	42
<b>OPTIONAL EQUIPMENT</b> ... ..	55	Separate Items ... ..	42
<b>PACKING</b> Cost of ... ..	2	<b>VARIOUS EQUIPMENT</b> ... ..	55
<b>PATTERNS</b> Identification ... ..	3	<b>WHEELS</b>	
<b>PIPES</b>		Bearings, Front ... ..	47
Exhaust (Singles) ... ..	11	Bearings, Rear ... ..	48
Exhaust (Twins) ... ..	21	Wheels, Front ... ..	47
Oil ... ..	47	Wheels, Rear ... ..	48
Petrol ... ..	45		
Vent ... ..	47		
<b>PLATES</b>			
Engine (Singles) ... ..	8		
Engine (Twins) ... ..	20 - 21		
Number, Front ... ..	39		
Number, Rear ... ..	39		

