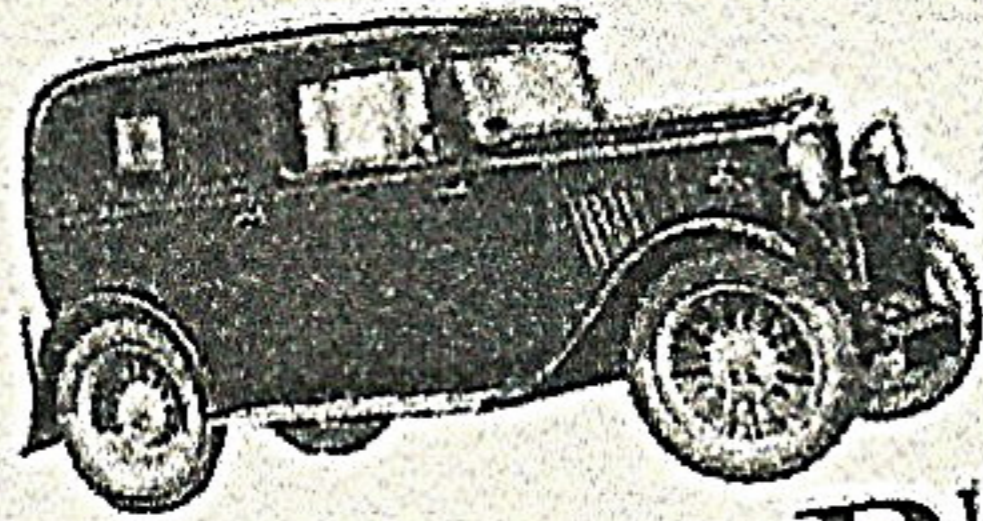
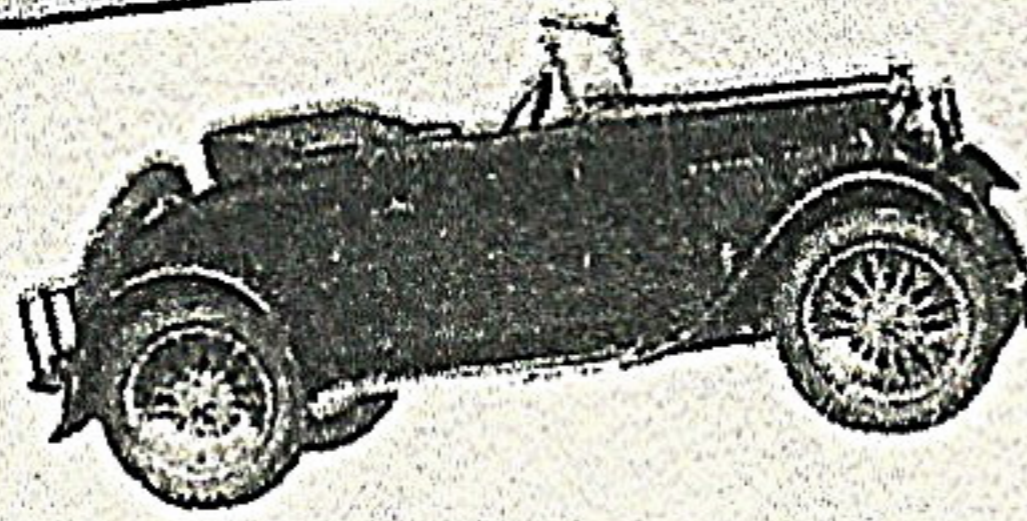


# A.J.S.

## High in public esteem and favour

Coachbuilt 2 Seater (with Dicky) £210-0-0



Fabric Saloon £230-0-0

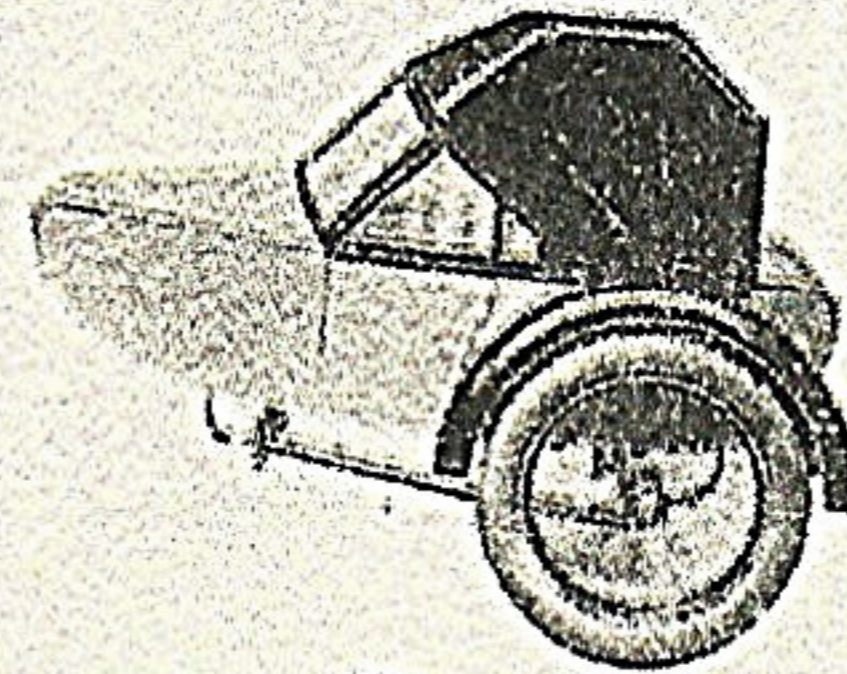
**B**UILT for the discerning motorist who buys the best as a matter of economy, the A.J.S. "Nine" has already found a receptive market. In style and appearance, it challenges comparison with any in its class. The tax is only £9 yet its performance is the equal of cars of much larger Horse power. Petrol consumption is approximately 45 to 50 miles to the gallon. Undoubtedly, a car that will sell on its merits.



The activities of A. J. Stevens & Co. (1914) Ltd. now cover every field of Motor Transport—Motor Cycles and Side-cars—for which they have been famous for over 20 years—Commercial Vehicles for Passenger

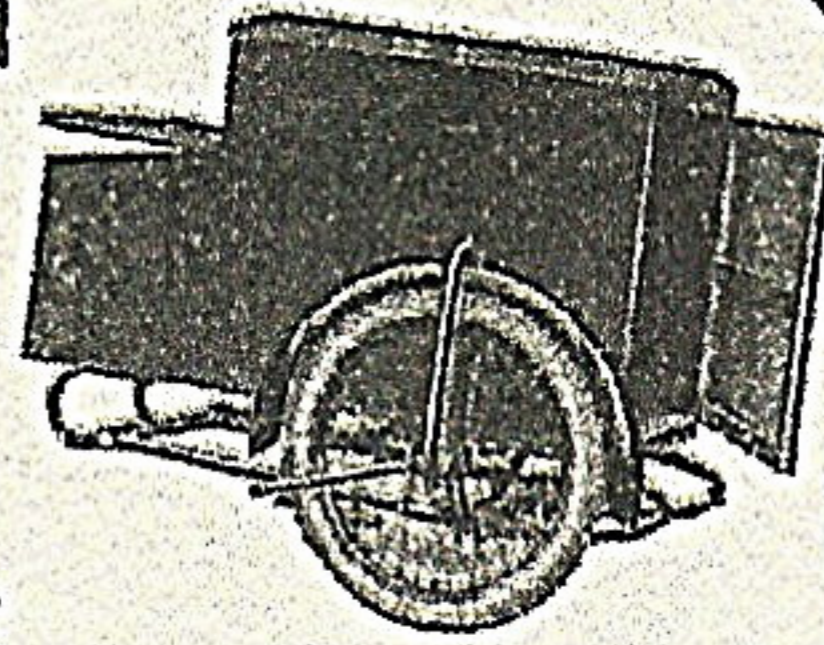
and Goods transport and their latest development—the 9 h.p. Light Car. The illustrations here are but a selection from the various models marketed.

Full particulars and catalogues of all A.J.S. products are available and will gladly be sent you on request.



Semi-Sports Model No. 121. £14-10-0

Wide Delivery Van No. 2810. £20-15-0



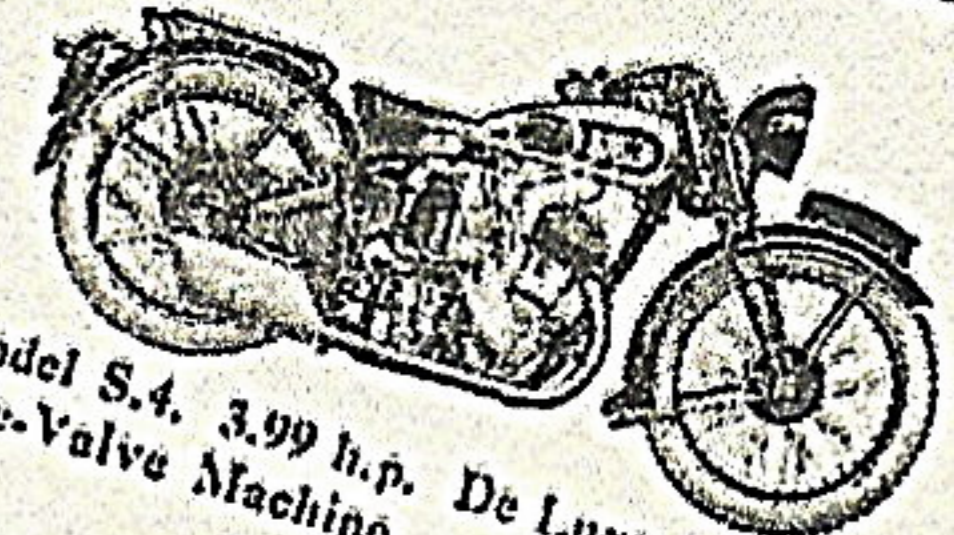
**R**ESPONDING to the requests of numerous Dealers, we are now supplying Side-cars to the Trade for fitment to any make of Motor-Cycle. These Craiseley Side-cars fully maintain the traditional reputation of A.J.S. High-class Workmanship and Materials. The range of Models is very comprehensive, covering the various types that have been on the Market for many years under different Trade designations.



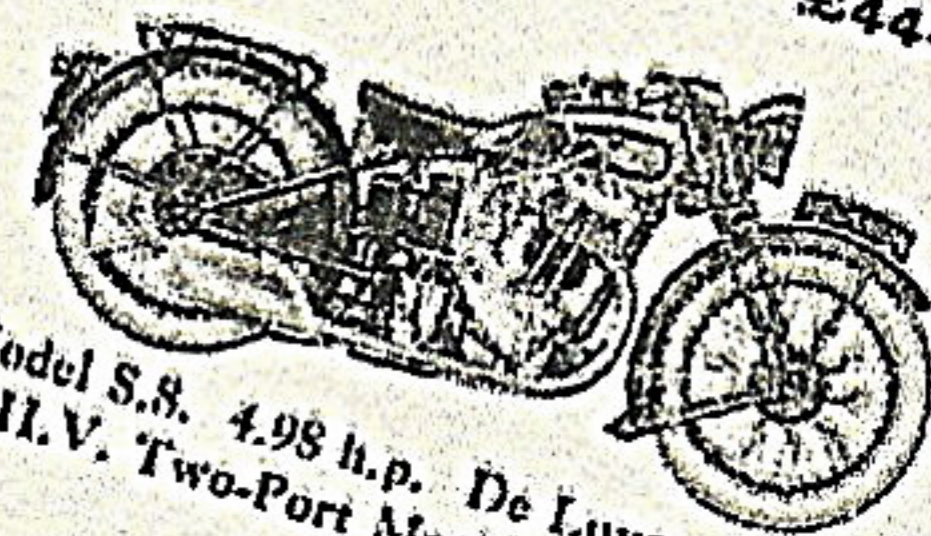
**C**ONSISTENTLY successful on Road and Track—the very name a synonym for reliability—these "quality" machines have found favour with motor cyclists of every type and taste. As a sales proposition, they afford great opportunities to the Dealer, for prices are competitive with all good makes.

# A.J.S.

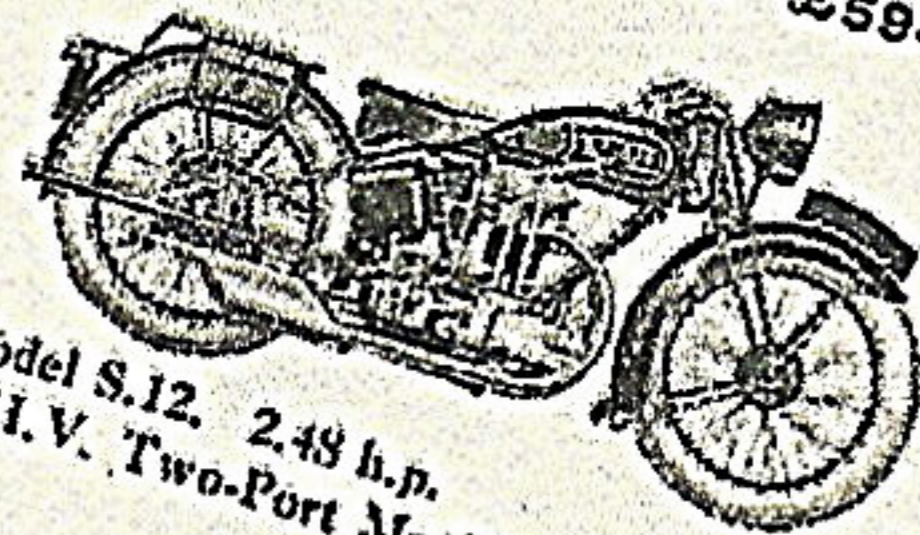
## Easy to sell on reputation alone



Model S.4. 3.99 h.p. De Luxe Side-Valve Machine £44-10-0



Model S.8. 4.98 h.p. De Luxe O.H.V. Two-Port Machine £59-10-0

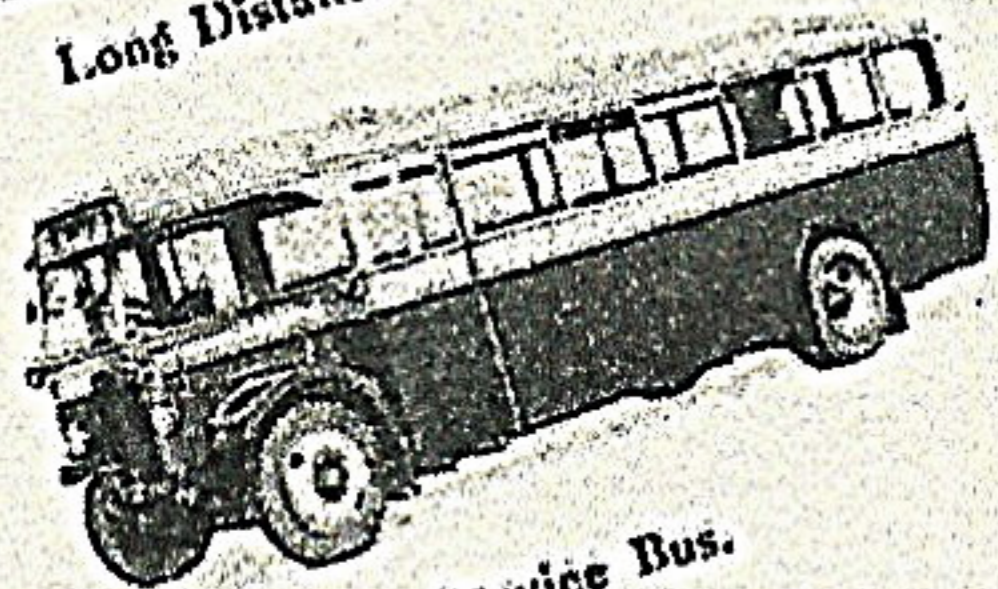


Model S.12. 2.49 h.p. O.H.V. Two-Port Machine £40-0-0

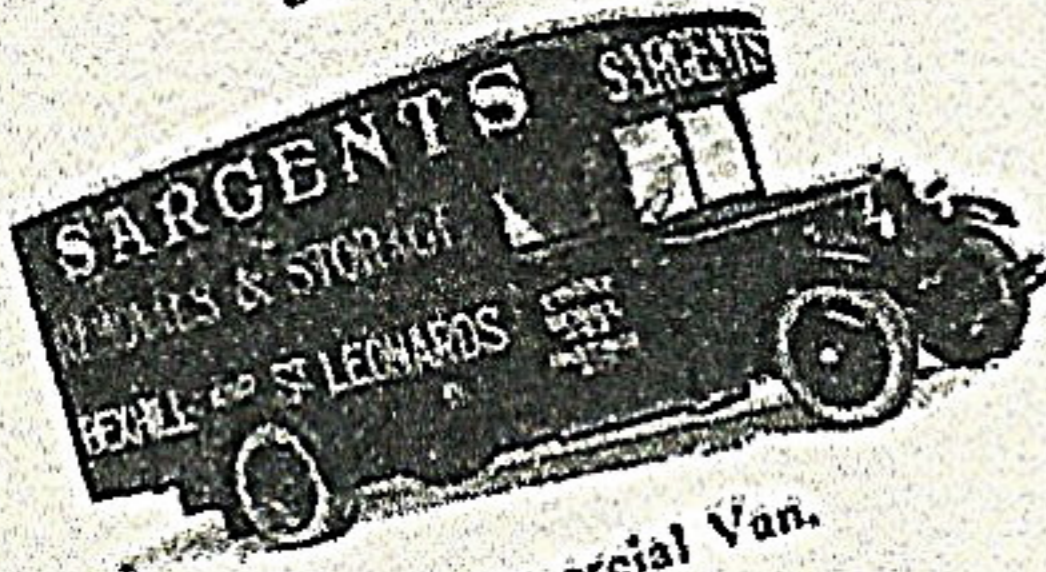
# MOTOR A.J.S. CYCLES



Long Distance Luxury Coach.



Service Bus.



Commercial Van.

"The Commodore" Classic 6-Cylinder Engine, developing 100 h.p. 24 seats £850

**T**HESSE vehicles appeal most strongly to the operator for they show a clear understanding of his ideals. Of straight forward, practical design—smart, fare-attracting appearance—low maintenance costs—their earning capacity is exceptionally high; consequently they are easy to sell.

"The Pilot" Chassis (£685) (Normal Steering) 6-Cylinder Engine, developing 70 h.p. To carry 12 Passengers. (£705) Forward Steering

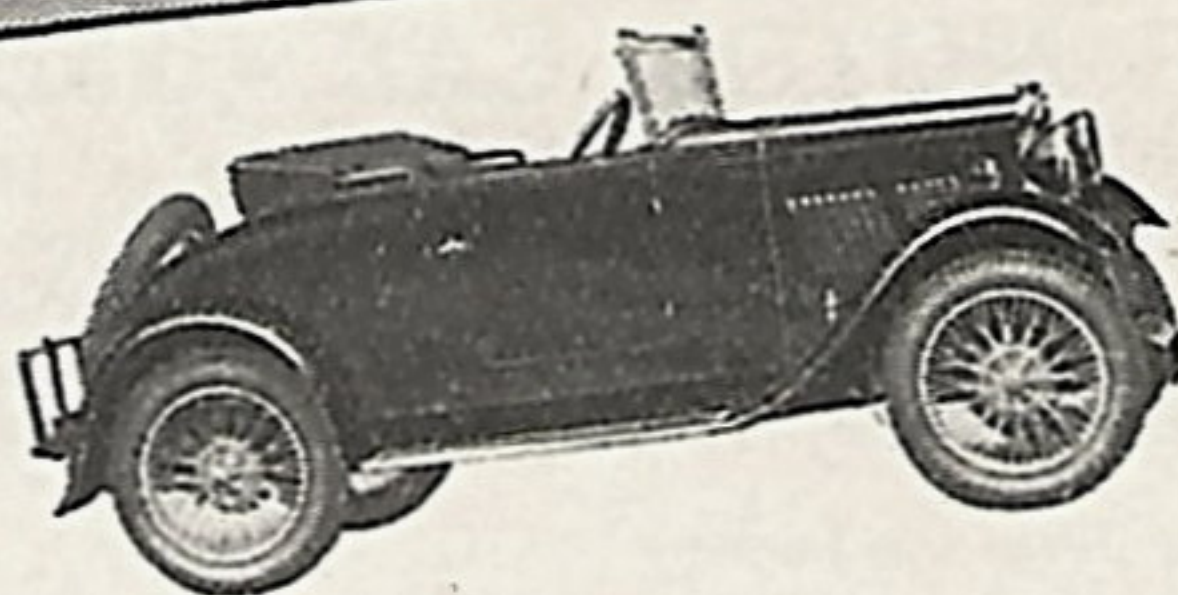
# A.J.S. BUSES COACHES

A.J. STEVENS & CO. (1914) LTD WOLVERHAMPTON ENGLAND

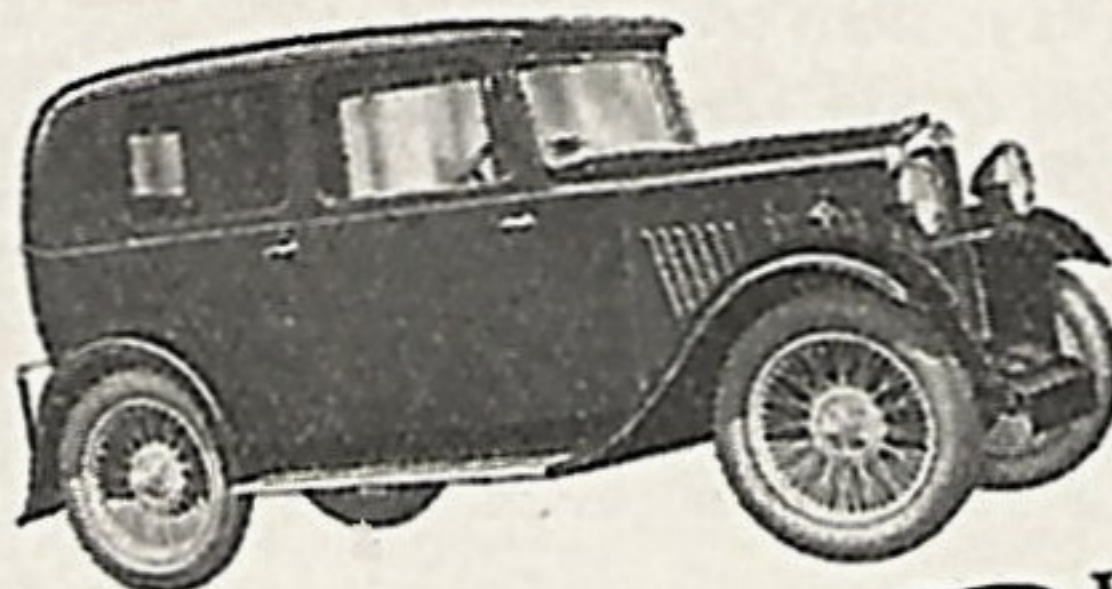
# A.J.S.

High in public esteem and favour

Coachbuilt  
2 Seater  
(with Dicky)  
£210-0-0



Fabric Saloon  
£230-0-0



**B**UILT for the discerning motorist who buys the best as a matter of economy, the A.J.S. "Nine" has already found a receptive market. In style and appearance, it challenges comparison with any in its class. The tax is only £9 yet its performance is the equal of cars of much larger Horse power. Petrol consumption is approximately 45 to 50 miles to the gallon. Undoubtedly, a car that will sell on its merits.



Long Distance Luxury Coach.



Service Bus.



Commercial Van.

**T**HES E vehicles most strongly appeal to the operator for they show a clear understanding of his ideals. Of straight forward, practical design—smart, fare-attracting appearance—low maintenance costs—their earning capacity is exceptionally high: consequently they are easy to sell.



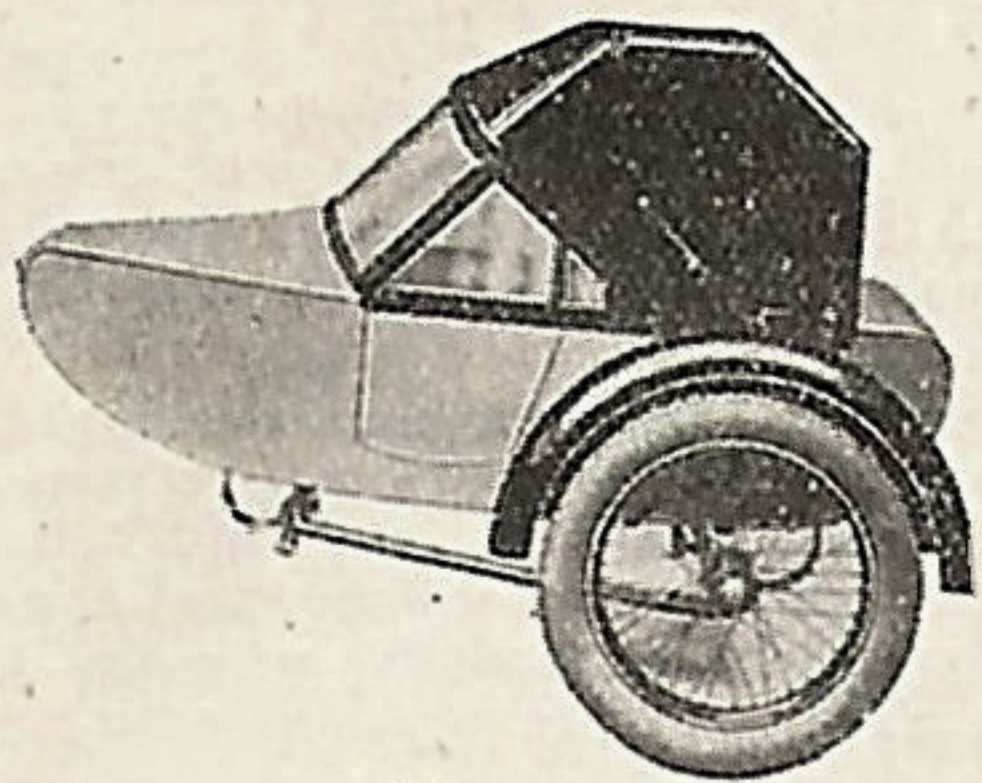
The activities of A. J. Stevens & Co. (1914) Ltd. now cover every field of Motor Transport—Motor Cycles and Side-cars—for which they have been famous for over 20 years—Commercial Vehicles for Passenger

"The Commodore" Chassis, 6-Cylinder Engine, developing 100 H.P. To carry 32 Passengers. £850

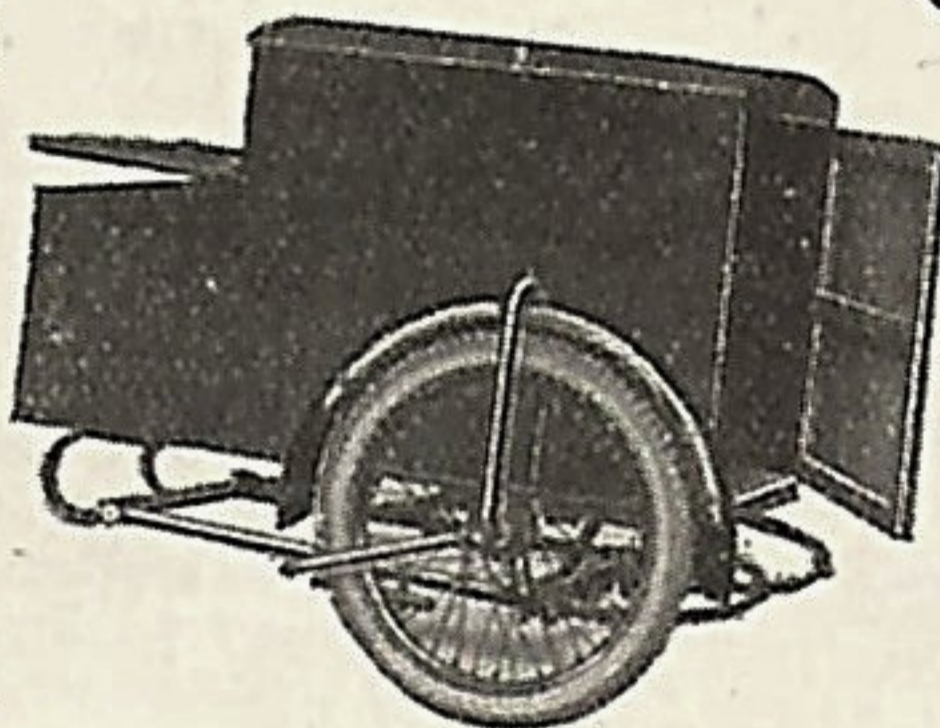
"The Pilot" Chassis, 6-Cylinder Engine, developing 70 H.P. To carry 26 Passengers. (£685 Normal Steering) (£705 Forward Steering)

BUSES **A.J.S.** COACHES

A.J. STEVENS & CO. (1914) LTD.



Semi-Sports Model  
No. 121.  
£14-10-0



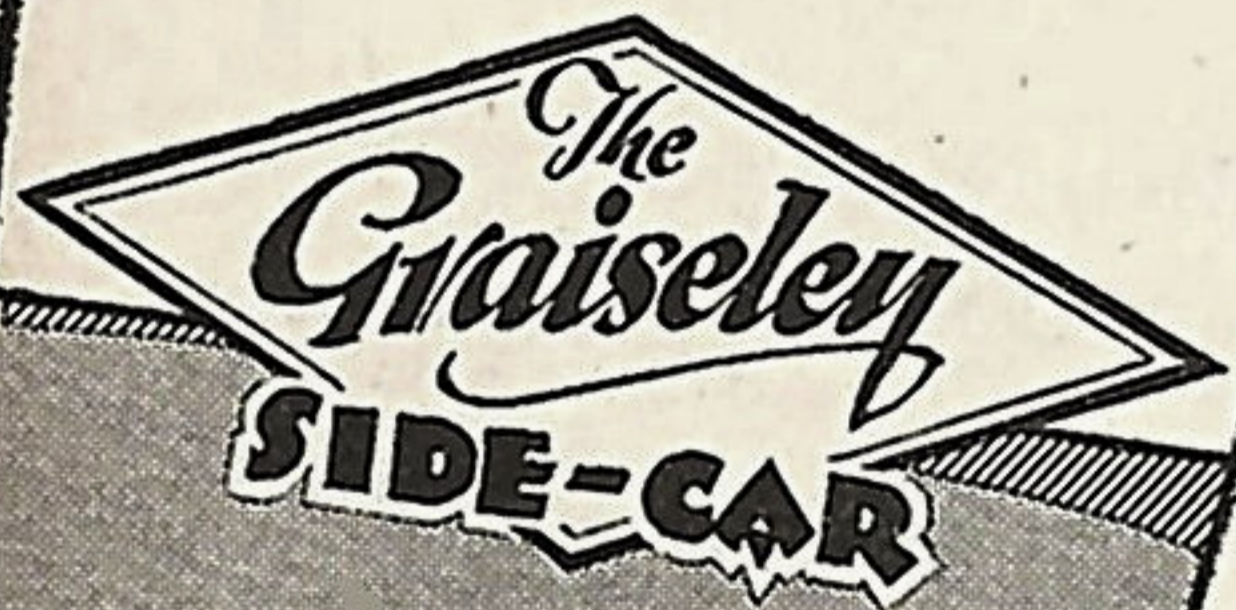
Wide Delivery Van  
No. 2810.  
£20-15-0

**A.J.S.**

**Easy  
to sell on  
reputation  
alone.**

**R**ESPONDING to the re-  
quests of numerous  
Dealers, we are now  
supplying Side-cars to the Trade  
for fitment to any make of  
Motor-Cycle.

These Craiseley Side-cars  
fully maintain the traditional  
reputation of A.J.S. High-class  
Workmanship and Materials.  
The range of Models is very  
comprehensive, covering the  
various types that have been  
on the Market for many years  
under different Trade desig-  
nations.

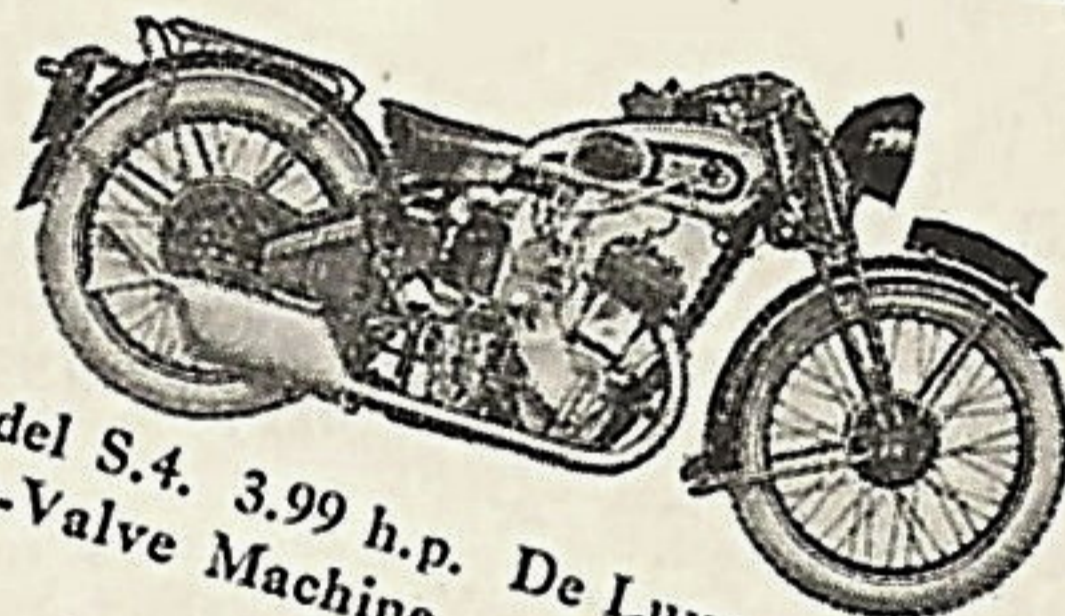


and Goods trans-  
port and their  
latest develop-  
ment—the 9 h.p.  
Light Car.

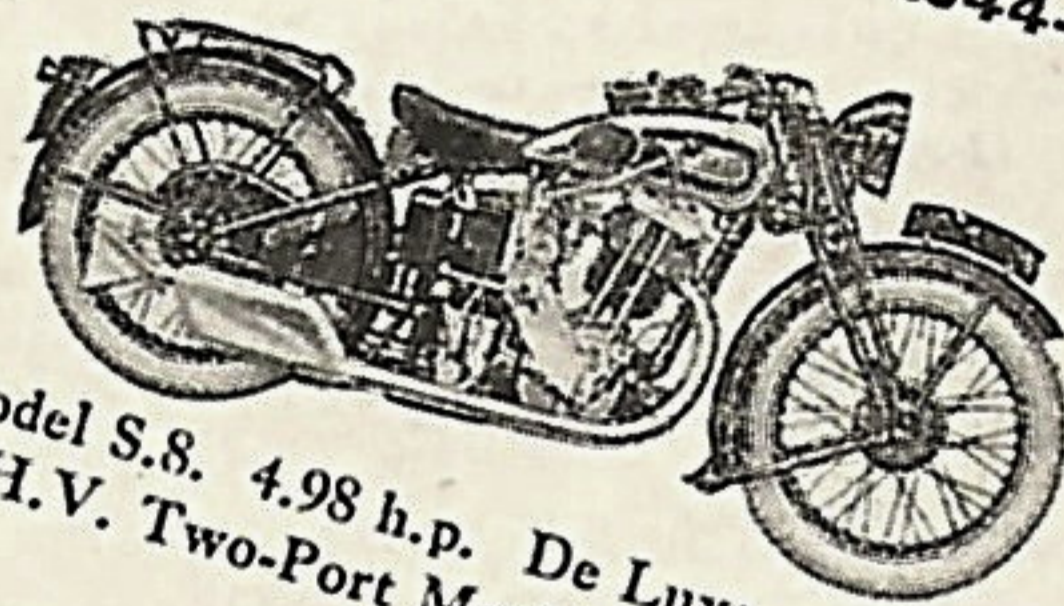
The illustra-  
tions here are  
but a selection  
from the vari-  
ous models  
marketed.

Full particulars and  
catalogues of all A.J.S.  
products are available  
and will gladly be sent  
you on request.

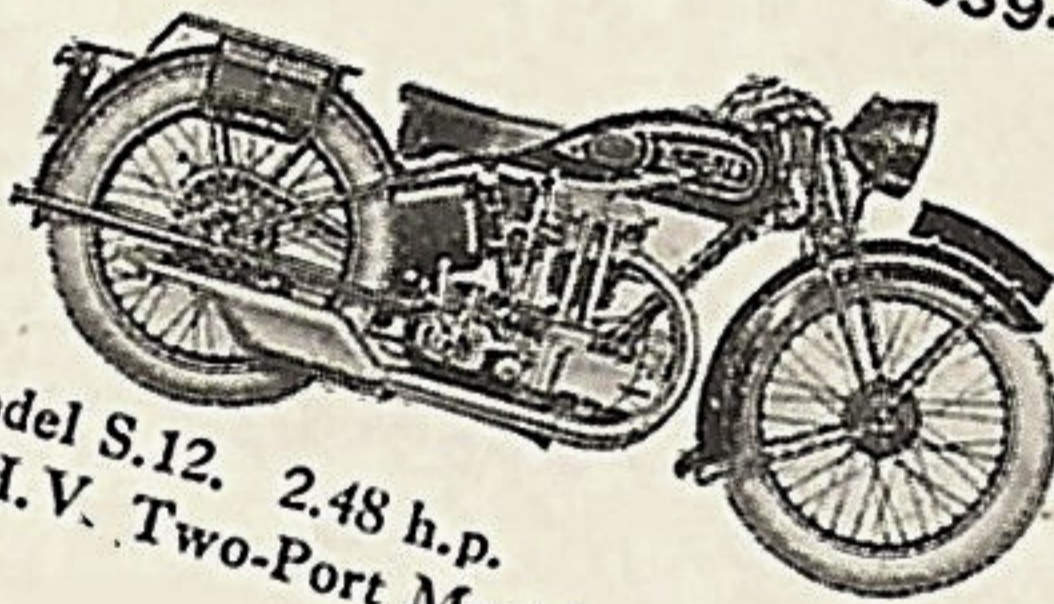
**C**ONSIS-  
tently success-  
ful on Road  
and Track—  
the very name  
a synonym for  
reliability—  
these "quality"  
machines have  
found favour  
with motor cy-  
clists of every  
type and taste.  
As a sales pro-  
position, they  
afford great  
opportunities  
to the Dealer,  
for prices are  
competitive  
with all good  
makes.



Model S.4. 3.99 h.p. De Luxe  
Side-Valve Machine  
£44-10-0



Model S.8. 4.98 h.p. De Luxe  
O.H.V. Two-Port Machine  
£59-10-0



Model S.12. 2.48 h.p.  
O.H.V. Two-Port Machine  
£40-0-0

**MOTOR A.J.S. CYCLES**

**WOLVERHAMPTON ENGLAND**