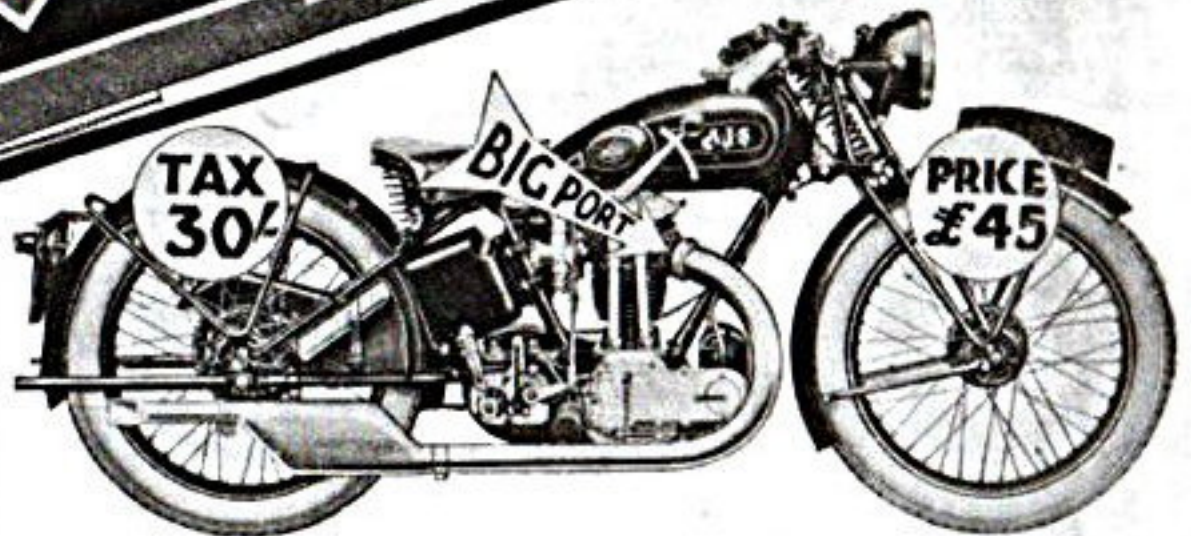


# All about THE NEW BIG PORT



**A.J.S.**  
Motor Cycles  
is contained  
in this  
folder!



**MODEL SB6, 3.49 h.p. o.h.v. "BIG PORT"**  
Extra for Maglita Lighting Set, as illustrated £5-0-0

**COMPLETE RANGE OF MODELS AND PRICES**

	£	s.	d.
S2. 9.96 h.p. Twin-Cylinder Machine	63	0	0
S4. 3.99 h.p. De Luxe Side Valve Machine	44	10	0
SA4. 3.49 h.p. De Luxe Side Valve Machine	44	10	0
S5. 3.49 h.p. Standard Side Valve Machine	40	0	0
SA5. 3.49 h.p. Standard Side Valve Machine (30% Tax)	40	0	0
S6. 3.49 h.p. Overhead Valve Machine	53	10	0
SB6. 3.49 h.p. Overhead Valve Machine (Big Port, 30% Tax)	45	0	0
S8. 4.98 h.p. Overhead Valve Machine	59	10	0
SB8. 4.98 h.p. Overhead Valve Machine (Big Port)	49	17	6
S9L. 4.98 h.p. De Luxe Side Valve Machine	49	0	0
S9H. 4.98 h.p. De Luxe Side Valve Machine	52	10	0
S12. 2.48 h.p. Overhead Valve Machine	40	0	0
SA12. 2.48 h.p. Overhead Valve Machine (30% Tax)	40	0	0

**A. J. STEVENS & Co. (1914) Ltd.**  
**WOLVERHAMPTON.**

London Distributors: H. TAYLOR & CO., LTD.,  
49-53, Sussex Place, South Kensington, S.W.7.

**Post this COUPON TO-DAY FOR YOUR COPY.**

NAME.....  
ADDRESS.....

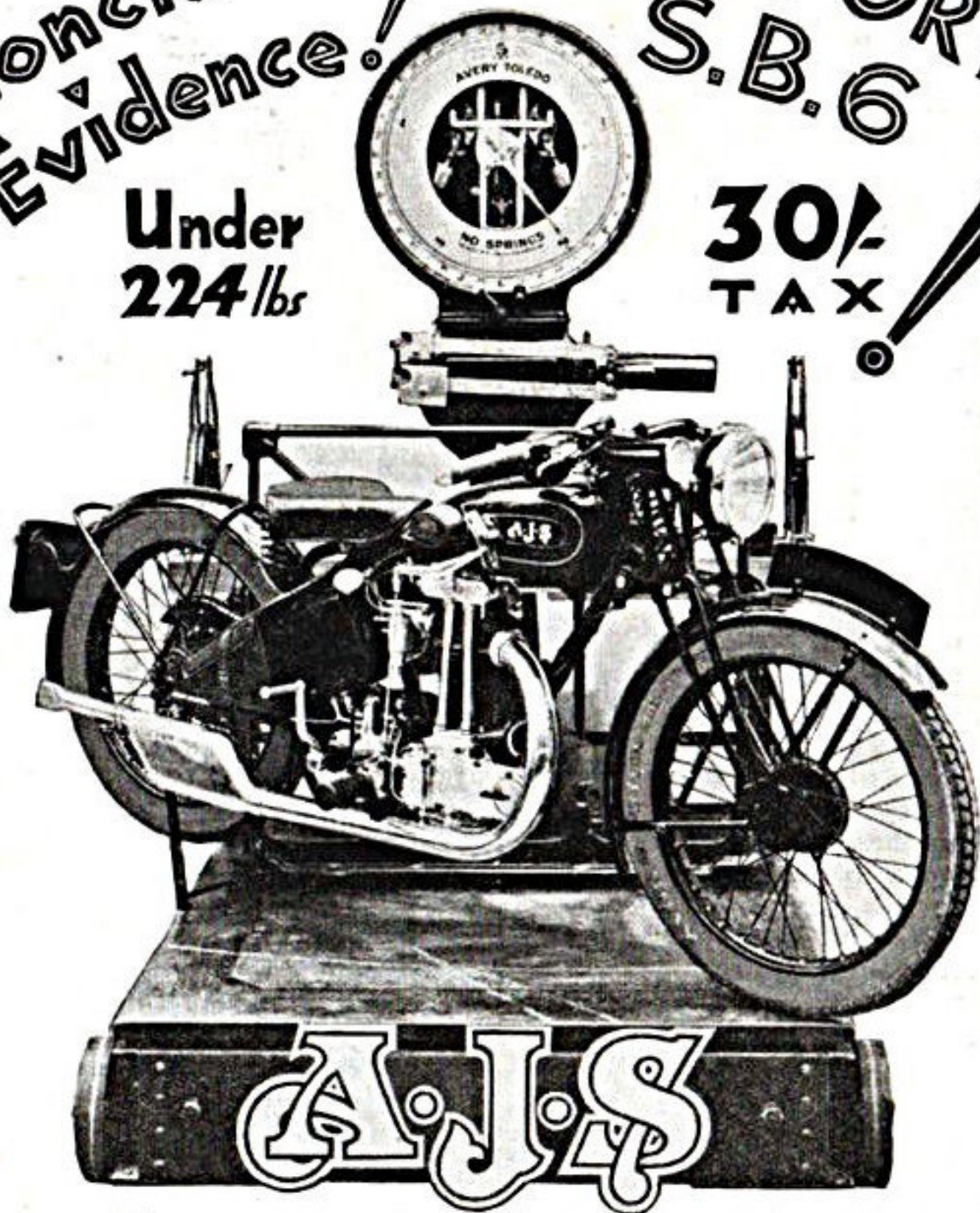
**PLEASE WRITE IN BLOCK LETTERS**

To  
**A. J. STEVENS & CO. (1914) LTD.,**  
**WOLVERHAMPTON.**

Please send me copy of folder and 1931 Catalogue, together with particulars of Hire Purchase Terms.

*In answering this advertisement it is desirable to mention "The Motor Cycle."*

**Conclusive Evidence!** **'BIG PORT'**  
**S.B.6**  
**Under 224 lbs** **30% TAX!**



**T**HE illustration above is an absolutely untouched photograph of an A.J.S. Model S.B.6 3.49 h.p. O.H.V. "BIG PORT" on an Avery scale, which shows the weight, with Maglita Lighting Set, to be under 2 cwt. The actual weight of the machine shown is 222 lbs. complete with tool bag, which may be removed for weighing purposes.

**PRICE £40-10-0** *(When fitted with Maglita Set £5 extra.)*

**A. J. STEVENS & CO. (1914) LTD.,  
 WOLVERHAMPTON.**

**LONDON DISTRIBUTORS: H. TAYLOR & Co., Ltd.,  
 49-53, Sussex Place, South Kensington, S.W.7.**

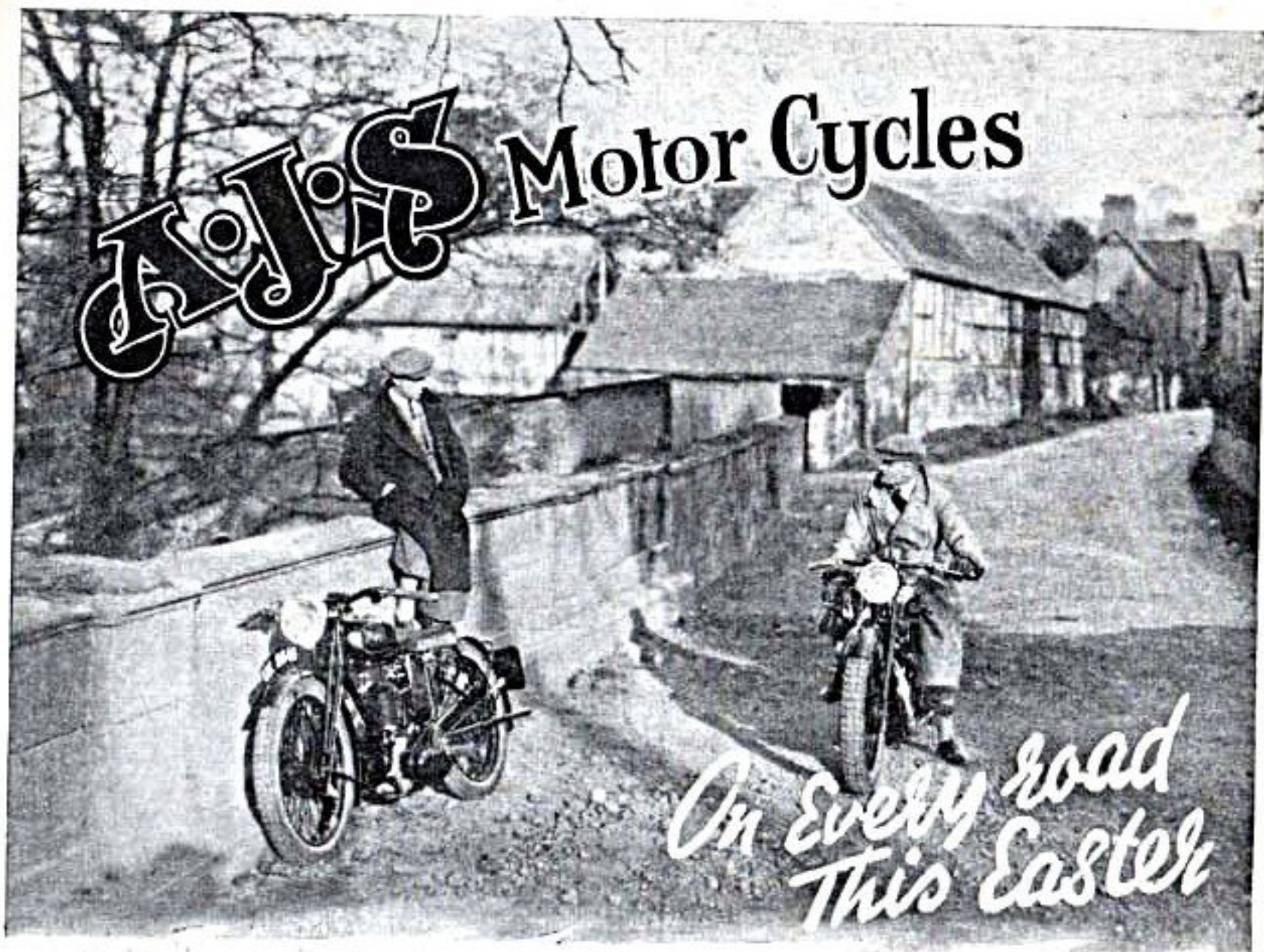
To  
**A. J. STEVENS  
 & CO (1914) LTD.,  
 WOLVERHAMPTON.**

*Please send me copy of special folder and 1931 Catalogue, together with particulars of Hire Purchase Terms.*

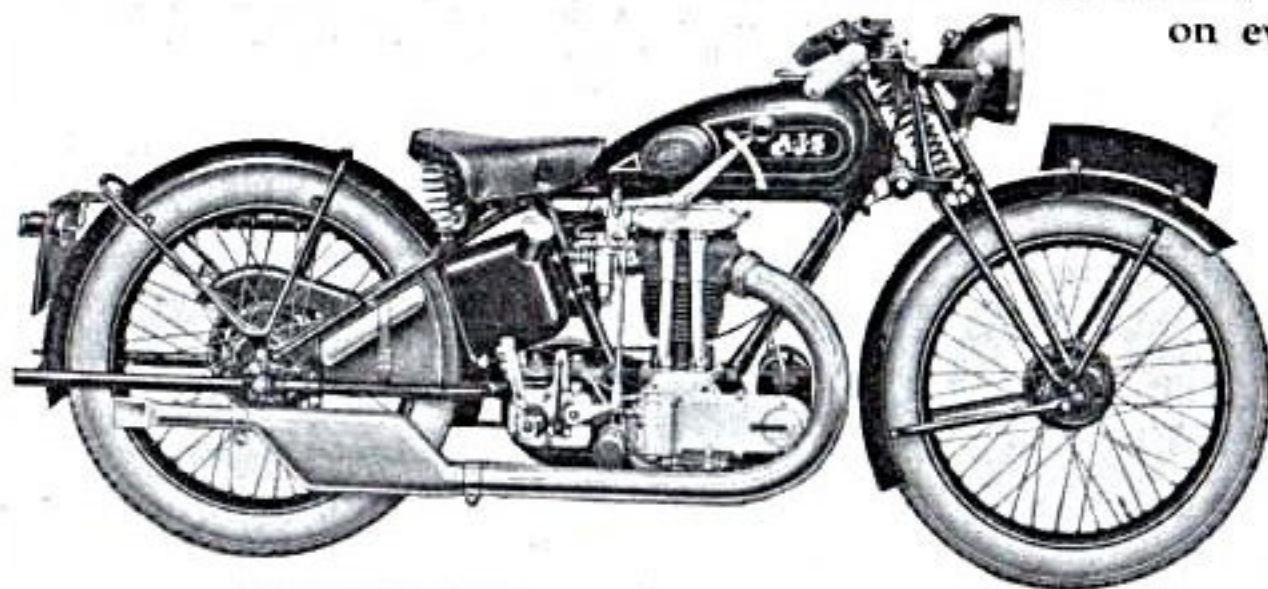
NAME .....

ADDRESS .....

**PLEASE WRITE IN BLOCK LETTERS**



**E**XPERIENCED riders on the latest "Big-Port" models and numbers of new devotees to motor cycling, whose considered choice has been an A.J.S., will be seen in full force on every road this Easter.



Reliability, silence, power, appearance and riding comfort are features found in every A.J.S. model, and offered at prices which are acknowledged amazing value.

**MODEL S.B.6. 3.49 H.P. O.H.V.**  
**"BIG PORT" Price £40-10-0**

WHEN FITTED WITH MAGLITA SET £5 EXTRA.

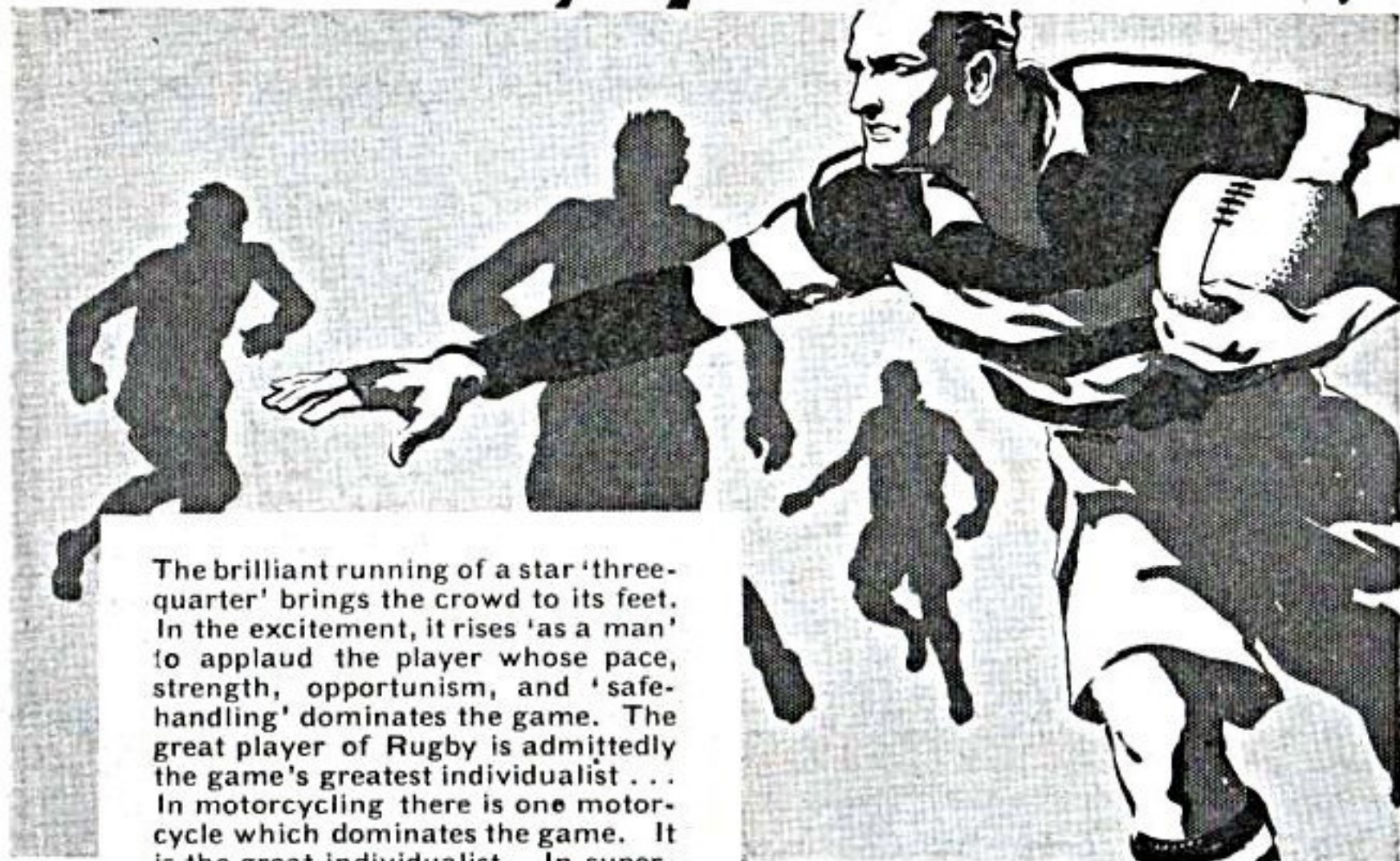
*Catalogue of all models and H.P. terms sent on request post free.*

**A. J. STEVENS & CO. (1914) LTD., WOLVERHAMPTON.**

LONDON DISTRIBUTORS: H. TAYLOR & CO., LTD., 49-53, Sussex Place, South Kensington, S.W.7

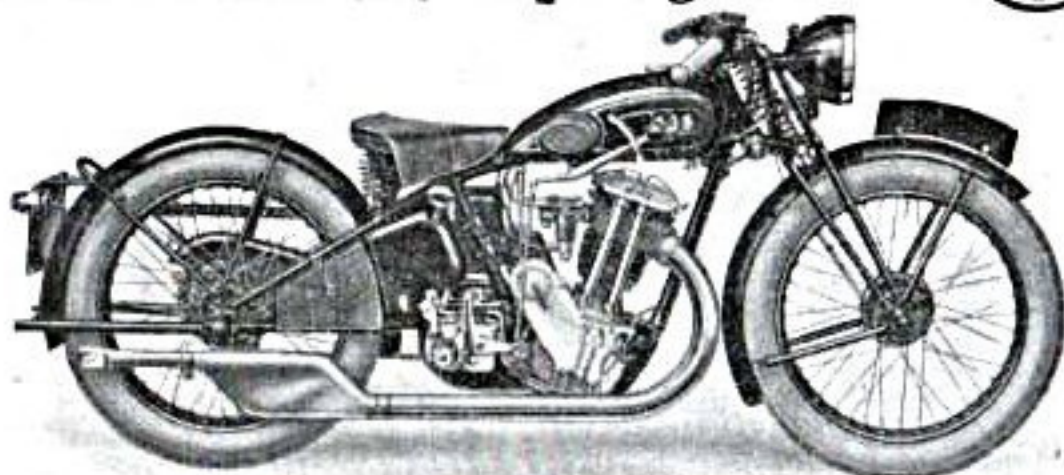
*In answering this advertisement it is desirable to mention "The Motor Cycle."*

# ONE always predominates!



The brilliant running of a star 'three-quarter' brings the crowd to its feet. In the excitement, it rises 'as a man' to applaud the player whose pace, strength, opportunism, and 'safe-handling' dominates the game. The great player of Rugby is admittedly the game's greatest individualist . . . In motorcycling there is one motorcycle which dominates the game. It is the great individualist. In super-performance, strength, reliability, safety, it is beyond comparison the star machine. It is the world's supreme quality motorcycle . . . and every motorcyclist who 'knows' motorcycles knows its name - A.J.S.

## Model T.B.6. 3.49 h.p. Big Port



**MODEL TB6**  
**£ 4 0**

or **£10 DOWN**  
and 12 monthly payments of  
**£3 0 10**  
or 18 monthly payments of  
**£2 1 9**

The Terms quoted above include comprehensive insurance for 12 months.

Proprietors:—Matchless Motorcycles (Colliers) Ltd.

# A.J.S.

The A.J.S. 3.49 h.p. "BIG PORT" gives a superior performance to any machine under 224 lbs. weight. It does a genuine 70 m.p.h. . . . acceleration is terrific . . . and it is fitted with Inclined Engine, Primary Chain running in Oil Bath, improved Mechanical Lubrication, Engine Shaft Shock Absorber . . . and the tax is **ONLY 30/- PER ANNUM** with Electric Lighting.

Under the new Budget Regulations a Model T.B.6. A.J.S. purchased this year will pay **ONLY 30/-** tax as long as the machine exists.

**COUPON M.C.**

To  
A.J.S. Motor Cycles,  
Plumstead Road, London,  
S.E.18.

Please send me the A.J.S. 1932 Catalogue.

NAME .....

ADDRESS .....

In answering this advertisement it is desirable to mention "The Motor Cycle."