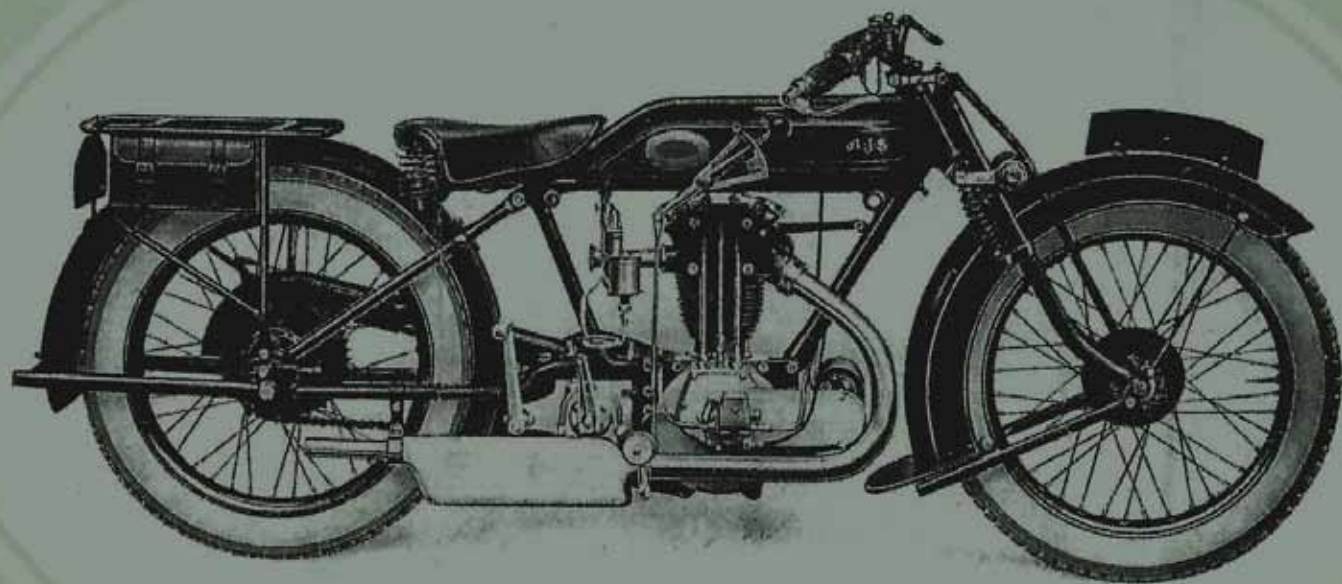


A.J.S.

Serie H.



799 cc
498 cc
349 cc

A.J.S.

MOTOR CYCLES

FOREWORD.

THE 1926 season has furnished further proof of the satisfactory service enjoyed by owners of A.J.S. motor cycles. The pleasure which a machine will give to its owner is governed by the design of every component part, and on the quality of materials and workmanship employed in its manufacture. Those who are about to purchase a motor cycle should choose carefully. In buying an A.J.S. you have the satisfaction of knowing that you are backed by one of the oldest firms in the trade, and one that has an unequalled experience in the designing and manufacture of motor cycles.

Consistency of performance is a characteristic which is inseparably associated with the name A.J.S., and this is true not only of machines in private use, but of those employed by Speed and Reliability riders in competitions all over the world.

The A.J.S. record of successes for the 1926 season is one that if detailed in full would fill the pages of this catalogue, for they have poured in from all parts of the world, with the result that it is impossible to chronicle more than a few of the more important events. These will be found at the end of this list, but mention may be made here of one or two of more than ordinary merit.

AN UNEQUALLED RECORD.

To have won Four Junior T.T. Races in succession, and one Senior Race would be considered a goodly record for these Classic Events; but A.J.S. machines have performed with outstanding distinction in every T.T. held since 1914. In addition to always being in the first three positions, they have secured Fastest Laps for the Course three years in succession. The remarkable increase in the speed of these laps is shewn by the following figures:—

1924 Junior T.T., 3.49 h.p. A.J.S. - 64.54 miles per hour.

1925 Senior T.T., 4.98 h.p. A.J.S. - 68.97 ”

1926 Senior T.T., 4.98 h.p. A.J.S. - 70.43 ”

The 1926 Amateur T.T. was also won on a 4.98 h.p. A.J.S., which in addition made Fastest Lap at 62 miles per hour.

3-SPEED COUNTERSHAFT GEAR.
ALL-CHAIN TRANSMISSION.
HAND-CONTROLLED CLUTCH.
QUICK-DETACHABLE WHEELS.
INTERNAL EXPANDING FRONT
AND REAR BRAKES.

The Grand Prix de Europe furnished over-whelming proof of A.J.S. superiority, a 4.98 h.p. model winning the 500 c.c. class in Record Time, and a 3.49 h.p. model being victorious in the 350 c.c. class. Other important successes during 1926 were The German Grand Prix 350 c.c. class; Scottish Six Days Trial, Two Silver Cups—Highest Awards—out of four secured by Sidecar machines, were gained by the A.J.S., viz.: 4.98 h.p. and Sidecar and 7.99 h.p. and Sidecar, both of which came through without loss of marks; The Scottish Speed Championship, 350 c.c. class; The Welsh T.T. Race, 350 c.c. class; The 10 Miles Open Championship at Pendine; The Leinster “Hundred” Miles Road Race in Ireland; The Australian Senior and Junior Grand Prix Races; The Natal 100 Miles Handicap Road Race in South Africa; The Circuit de Gattieres in France; The Barcelona—San Sebastian Race in Spain; The Speed Championship of Western Japan, 350 c.c. class; The Roumanian Cup Trial, etc.

1927 MODELS.

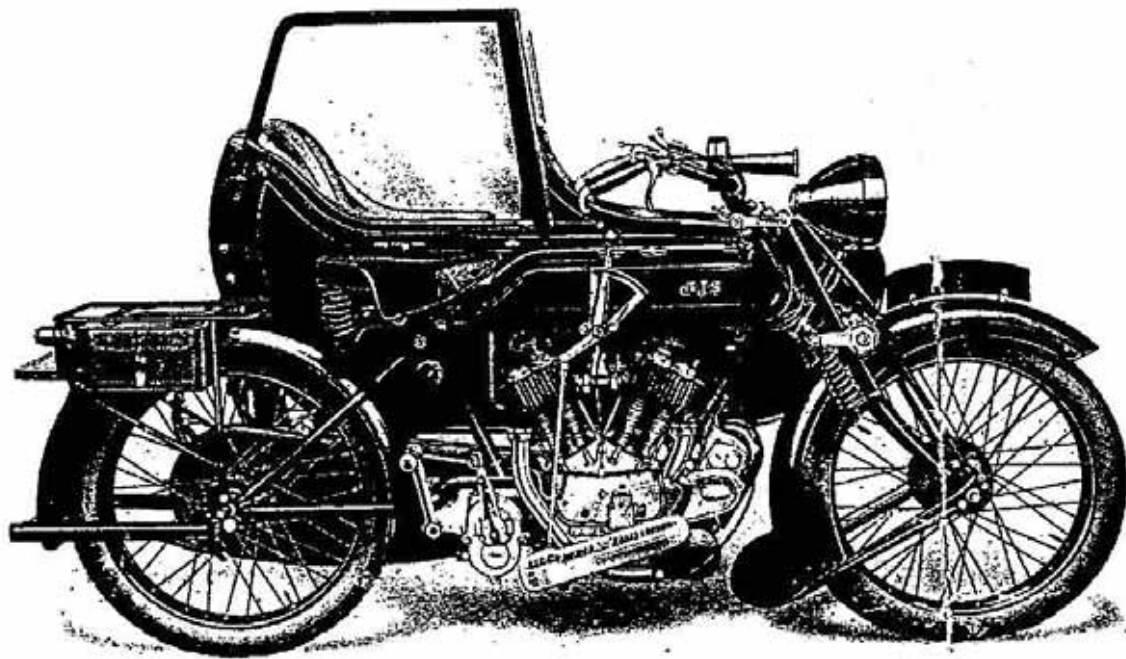
In addition to many detail improvements, all models for next season have Roller Bearings fitted to the Main Shafts, Big End of Connecting Rod, and an improved type of gate change Quadrant and Lever. This type of gate change was introduced last year on our 4.98 h.p. machines, but has also figured on all late 1926 machines.

Clutch operation of the 3.49 h.p. models is on the same lines as that employed on the 4.98 h.p. gear boxes, whilst on all models an improved Cylinder Head with additional cooling fins round the exhaust port has been embodied. On engines fitted with Overhead Valves, the adjustment of the Tappet Tubes has been incorporated on the Rocker itself, instead of at the base of the tube. The Tappet Guides of all Single Cylinder machines have cup-shaped heads which provide a well of oil round the tappet itself, and the Valve Lifter mechanism has also been brought into line with that of the 4.98 h.p. model, being now of the enclosed type. On the H6 and H8 models, the Cylinder Heads and Barrels will be counterparts of those fitted to special Racing machines.

INTRODUCTION OF NEW MODEL.

In response to numerous requests, we have decided to market a Side-by-Side Valve 4.98 h.p. model for 1927, and we feel confident that it will meet with universal approval. This machine follows closely on the lines of the 4.98 h.p. O.H.V. model. It will be found to be an ideal dual-purpose machine, having an ample reserve of power for sidecar work.

A. J. STEVENS & CO. (1914) LTD.,
WOLVERHAMPTON. October, 1926.



The A.J.S. 7.99 h.p. De Luxe Passenger Combination, Model H1.

Fitted with Lucas Electric Lighting Set, All-Chain Drive, 3-speed Gear, Hand-Controlled Clutch, Foot-Starter, Internal Expanding Front and Rear Brakes, Quick Detachable, Interchangeable Wheels.

SPECIFICATION—MOTOR CYCLE.

Engine. Twin Cylinder (74×93 m.m. Bore and Stroke, 799 c.c. capacity). Fitted with Detachable Heads, Aluminium Pistons, Roller Bearings to Big Ends of Connecting Rods and Main Shafts, Shock Absorber to Engine Shaft, Large Interchangeable mechanically operated Valves, Adjustable Valve Tappets, Large efficient Silencer.

Carburettor. Binks.

Frame. Scientifically constructed of Heavy Gauge Best Quality Tubing throughout.

Tank. Improved Design, Supported from below on brazed-on-brackets. Fitted with Large Fillers for Petrol and Oil, Petrol Injectors to Cylinders, Capacity—Petrol, 2½ galls. Oil, 1 qt.

Lubrication. Mechanical Oil Pump with Sight Feed and Auxiliary Hand Pump.

Ignition. Lucas "Magdyno," enclosed type, Handlebar Control, Vernier Timing Adjustment.

Chains. "Hans Renold" extra strong Motor Cycle, ½ in. pitch × ½ in. wide.

Chain Cases. Weather proof, entirely enclosing Chains.

Gear Box. Our renowned Three-Speed Bottom Bracket Gear, Ball Bearings throughout. Operation by our improved Gate Change. Gear Ratios, 5, 9, 16 to 1.

Clutch. Patent Multiple Plate, with Cork Inserts, Improved Operating Mechanism, Hand-Controlled.

Wheels. A.J.S. Patent. Both wheels are interchangeable and can be detached instantly.

Tyres. Back and Front fitted with 26×3.25 Wired-on Dunlop Cord Heavy Non-skid.

Mudguards. The Front Mudguard is of special design, giving perfect protection in the worst weather. Back Guard is 7 in. wide. Both are fitted with Valance and Gutter.

Brakes. Back and Front Internal Expanding pattern. Extremely powerful and smooth acting. Back operated by Foot Pedal on left-hand side of machine. Front by Pedal on right-hand side.

Forks. Latest A.J.S. Design, fitted with Shock Absorbers and all links adjustable for taking up side play.

Footboards. Protected design, with deep Rubber Tread and Heel Rest, made entirely of Rubber.

Stands. Fitted to both wheels. The Rear Stand is our Patent design.

Carrier. Steel tube, oxy-acetylene welded. Fitted with Pannier Bags with steel outer cases.

Tools. A Tool Roll with full kit of best quality Tools is provided.

Starting. Improved Design Foot-Starter, gives very easy starting. Entirely enclosed mechanism.

Saddle. Terry Spring Seat No. 1 de Luxe, or Brooks Supple Seat No. B190/2C.

Finish. Finest Black Enamel on our Special Rust Preventive Process, including the Handlebars, usual parts heavily Nickel-plated.

Lighting. Lucas "Magdyno" Electric Lighting Set, complete with Accumulator, Head, Side and Tail Lamps and Switch Box.

Horn. Electric.

Registration. Plates fitted ready for Painting.

Measurements. Wheel Base, 4 ft. 9 in.

Weight. Approx. 336 lbs.

SPECIFICATION—SIDECAR.

Body. Constructed of steel panelling, Beautifully upholstered. Seat and back fitted with springs. The standard equipment includes Stormproof Apron, Wind Screen, Side Screen, Sidecar Stand and Lamp.

Chassis. Special Underslung type, the design of which enables a very spacious body to be fitted. Ground clearance, full 6 in.

Wheel. Instantly detachable and interchangeable with wheels of Motor Cycle.

Tyre. 26 × 3.25 Wired-on Dunlop Cord Heavy Non-skid.

Mudguard. 5 in. wide and fitted with Side-Shield completely protecting the passenger against mud and dirt.

Luggage Carrier. Strongly made of metal. Very spacious, and is integral with the body.

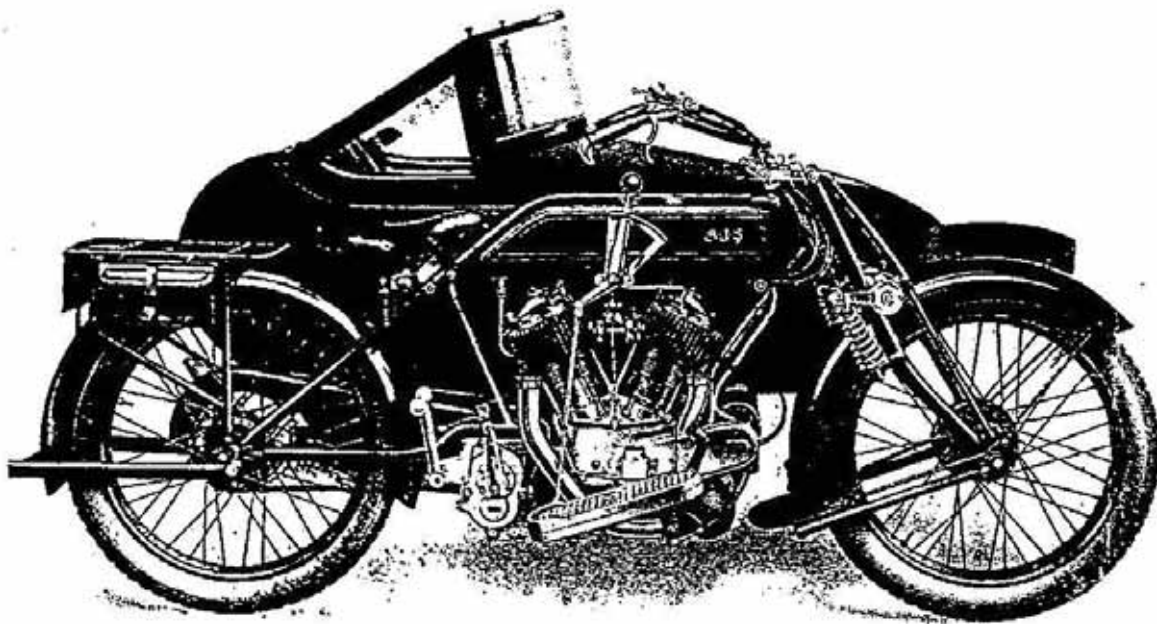
Colour. Our standard colour is black, from which no deviation can be made.

Price £95 : 0 : 0

Extra for Spare Wheel without Tyre	-	-	£3 : 0 : 0
Extra for Tyre only	-	-	£3 : 8 : 8
Extra for Left Hand Side Screen	-	-	£0 : 17 : 6
Extra for Hood	-	-	£2 : 7 : 6

(We reserve the right to modify or deviate from the above Specification and Prices without notice.)

All Prices in this List include Carriage per PASSENGER TRAIN AT OWNER'S RISK to any Station in the United Kingdom. Owing to the present instability of the rubber market, all prices in this list are subject to any increase which may take place in tyre prices during the season.



The A.J.S. 7.99 h.p. Standard Passenger Combination, Model H2.

Fitted with All-Chain Drive, Three-Speed Gear, Hand-Controlled Clutch, Foot-Starter, Internal Expanding Front and Rear Brakes, Quick Detachable Interchangeable Wheels to Motor Cycle.

SPECIFICATION—MOTOR CYCLE.

- Engine.** Twin Cylinder (74 x 93 m.m. Bore and Stroke, 799 c.c. capacity). Fitted with Detachable Heads, Aluminium Pistons, Roller Bearings to Big Ends of Connecting Rods and Main Shafts, Shock Absorber to Engine Shaft, Large Interchangeable Mechanically Operated Valves, Adjustable Valve Tappets, Large Efficient Silencer.
- Carburettor.** Binks.
- Frame.** Scientifically Constructed of Heavy Gauge Best Quality Tubing throughout.
- Tank.** Improved Design, Supported from below on brazed-on brackets. Fitted with Large Fillers for petrol and oil, Petrol Injectors to Cylinders, Capacity: Petrol 2½ gallons, Oil 1 quart.
- Lubrication.** Mechanical Oil Pump with Sight Feed and Auxiliary Hand Pump.
- Ignition.** Lucas Magneto, enclosed type. Handlebar Control. Vernier Timing Adjustment.
- Chains.** Best Quality Extra Strong Motor Cycle, ½ in. pitch x ¾ in. wide.
- Chain Guards.** Semi-enclosed type, giving easy access to the Transmission.

(We reserve the right to modify or deviate from the above Specification and Prices without notice.)

All Prices in this List include Carriage per PASSENGER TRAIN AT OWNER'S RISK to any Station in the United Kingdom, Owing to the present instability of the rubber market, all prices in this list are subject to any increase which may take place in tyre prices during the season.

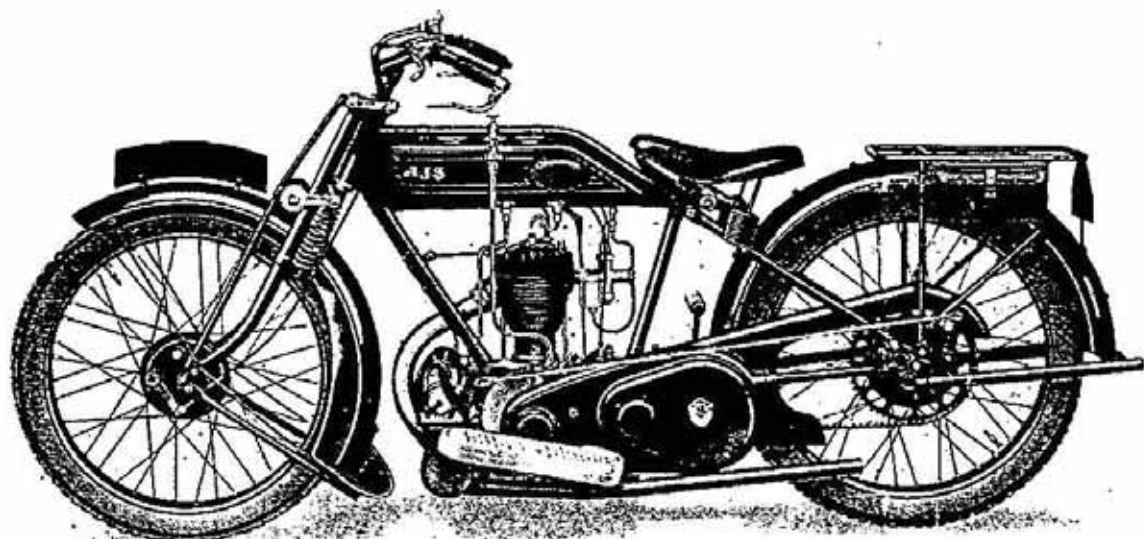
- Gear Box.** Our renowned Three-Speed Bottom Bracket Gear, Ball Bearings throughout. Improved Operation by our Gate Change. Gear Ratios, 5, 9, 16 to 1.
- Clutch.** Patent Multiple Plate, with Cork Inserts. Improved Operating Mechanism, Hand-Controlled.
- Wheels.** A.J.S. Patent. Both Wheels of the Motor Cycle are interchangeable and can be detached instantly.
- Tyres.** Back and Front fitted with 26x3.25 Wired-on Dunlop Cord Heavy Non-skid.
- Mudguards.** Special design, giving adequate protection.
- Brakes.** Back and Front Internal Expanding pattern. Extremely powerful and smooth acting. Back operated by foot pedal on left-hand side of machine. Front by pedal on right-hand side.
- Forks.** Latest A.J.S. Design, fitted with Shock Absorbers, and all links adjustable for taking up side play.
- Footboards.** Protected design, with deep Rubber Tread and Heel Rest, made entirely of rubber.
- Stands.** Fitted to both wheels.
- Carrier.** Steel tube, oxy-acetylene welded. Fitted with Pannier Bags with steel outer cases.
- Tools.** A Tool Roll with full kit of best quality Tools is provided.
- Starting.** Improved design Foot-Starter, gives very easy starting.
- Saddle.** Terry Spring Seat No. 2 de Luxe, or Brooks' Supple Seat No. B190/IC.
- Finish.** Finest Black Enamel on our Special Rust Preventive Process including the Handlebars, usual parts heavily Nickel-plated.
- Registration.** Plates fitted ready for painting.
- Measurements.** Wheel base 4 ft. 9 in.
- Weight.** Approx. 316 lbs.

SPECIFICATION—SIDECAR.

- Body.** Constructed of steel panelling. Beautifully upholstered. Seat and back fitted with springs. The back of the seat is hinged, giving easy access to spacious locker at rear of body. The standard equipment includes Windscreens, Sidescreens, and Stormproof Apron.
- Chassis.** Special Underslung Type, with duplex axle tubes.
- Suspension.** Laminated Cee Leaf Springs, back and front.
- Tyre.** 26x3.25 wired-on Dunlop Cord Heavy Non-skid.
- Mudguard.** Fitted with side shield completely protecting the passenger against mud and dirt.
- Colour.** Our standard colour is black, from which no deviation can be made.

Price £80 : 0 : 0

Extra for "Magdyno" Lighting Set	-	-	£8 : 0 : 0
Extra for Spare Wheel without Tyre	-	-	£3 : 0 : 0
Extra for Tyre only	-	-	£3 : 8 : 8
Extra for Hood	-	-	£2 : 7 : 6



The A.J.S. 3.49 h.p. De Luxe Touring Model H3.

Fitted with All-Chain Drive, Three-Speed Gear, Hand-Controlled Clutch, Foot-Starter, Quick Detachable Rear Wheel, Internal Expanding Front and Rear Brakes.

SPECIFICATION.

Engine. Single Cylinder (74×81 m.m. Bore and Stroke, 349 c.c. capacity), fitted with Detachable Head. Aluminium Piston. Roller Bearings to Big End of Connecting Rod and Main Shafts. Large Mechanically Operated Valves. Adjustable Valve Tappets. Efficient Cooling. Enclosed Valve Lifter.

Carburettor. Binks.

Frame. Scientifically Constructed. Lightness with Strength.

Tank. Improved Design. 1½ gall. Petrol. 1 qt. Oil.

Lubrication. Mechanical Oil Pump with Sight Feed and Auxiliary Hand Pump.

Ignition. "Lucas" Magneto. Handlebar Control.

Chains. "Hans Renold" ½ in. Pitch × ⅞ in. wide. A Shock Absorber is fitted to the Engine Shaft.

(We reserve the right to modify or deviate from the above Specification and Prices without notice.)

All Prices in this List include Carriage per PASSENGER TRAIN AT OWNER'S RISK to any Station in the United Kingdom. Owing to the present instability of the rubber market, all prices in this list are subject to any increase which may take place in tyre prices during the season.

Chain Guards. Semi-enclosed Type, giving easy access to the Transmission.

Gear Box. A.J.S. Countershaft Three-Speed Gear, fitted throughout with Ball Bearings. Operated by our improved Gate Change. Ratios, 5.5, 9.3, and 14 to 1.

Clutch. Hand-Controlled, with Cork Inserts.

Wheels. Rear A.J.S. Patent Quick Detachable.

Tyres. 27 × 2.75 Wired-on Dunlop Cord Heavy Non-skid.

Mudguards. Improved Design, affording excellent protection.

Brakes. Front and Rear Internal Expanding Type. Rear Brake operated by Pedal on left hand side of the machine. Front by lever on Handlebar. Both are extremely powerful and smooth acting.

Forks. Latest A.J.S. Design, fitted with Shock Absorbers, and all links adjustable for taking up side play.

Handlebars. Touring Pattern.

Footboards. "Protected" Design of Solid Rubber.

Stands. Strong "Kick-up" Type fitted to Front and Rear Wheels.

Carrier. Built of Steel Tubing, with Welded Flush Joints.

Tool Cases. Two Pannier Bags, with Full Kit of Tools.

Starting. Improved Design Foot-Starter gives very easy starting.

Saddle. Terry Spring Seat No. 2 de Luxe, or Brooks' Supple Seat No. B190/1C.

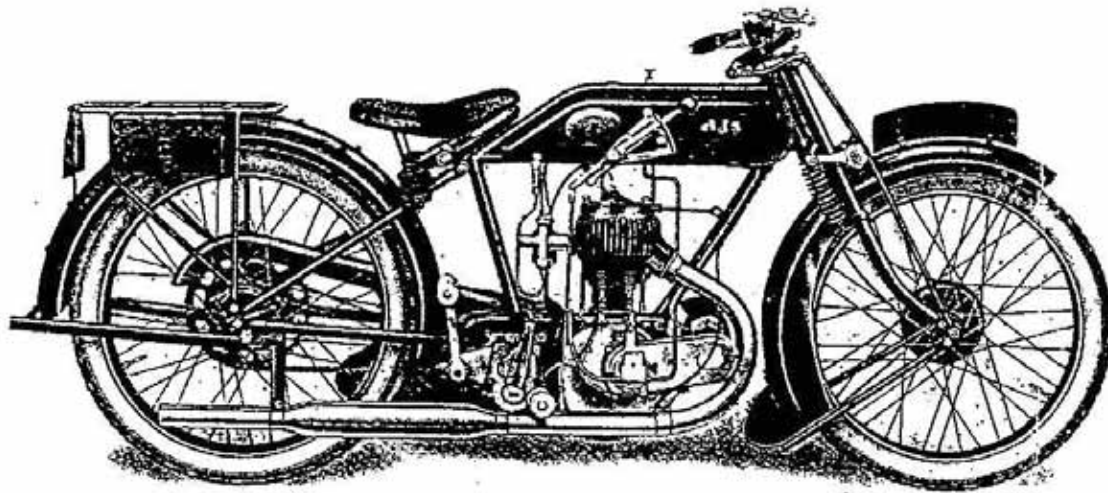
Finish. Finest Black Enamel on our Special Rust Preventive Process, including the Handlebars, usual parts heavily Nickel-plated.

Measurements. Wheel Base 4 ft 5½ inches. Height of Saddle 28 inches.

Weight. Approx. 214 lbs.

Price £48 : 10 : 0

Extra for Electric Lighting Set: Solo - - £6 : 15 : 0
Combination £7 : 5 : 0



*The A.J.S. 3.49 h.p. De Luxe Sporting
Model H4.*

MODEL H4.

Fitted with All-Chain Drive, Three-Speed Gear, Hand-Controlled Clutch, Foot-starter, Quick Detachable Rear Wheel, Internal Expanding Front and Rear Brakes.

The general Specification of this Model as regards equipment is the same as Model H3. This Sporting Model has specially tuned Engine, Semi T.T. Handlebars and Footrests.

Close Ratio Gear Box can be had if desired.

One of these Models, absolutely Standard in every respect, and fully equipped, was officially timed by the A.C.U. Timekeeper on October 28th, 1921, and lapped Brooklands at a speed of 62.47 miles per hour (flying start) and 61 miles per hour (standing start).

Price £48 : 10 : 0

Extra for Electric Lighting Set: Solo - - £6 : 15 : 0
Combination £7 : 5 : 0

MODEL H6.

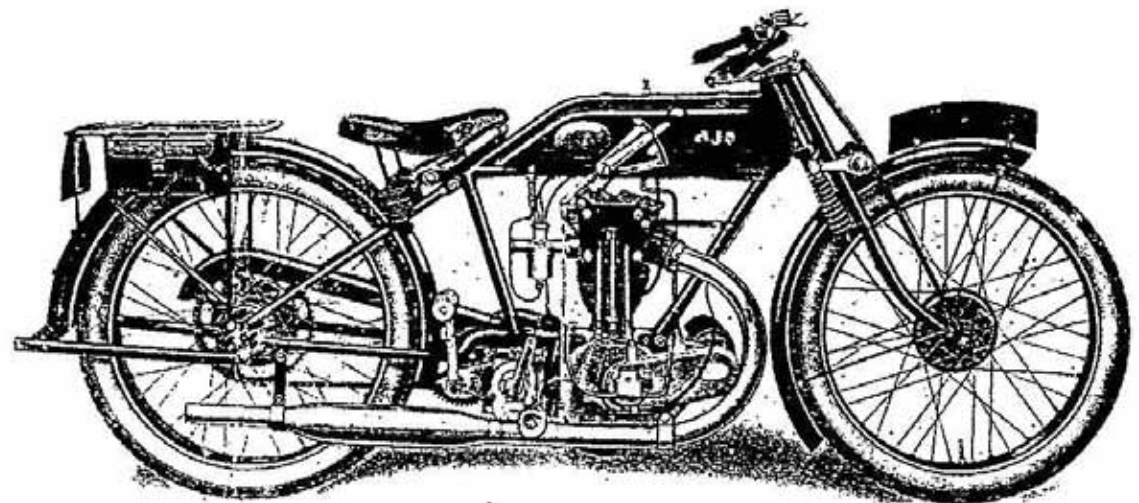
Fitted with All-Chain Drive, Three-Speed Gear, Hand-Controlled Clutch, Foot-Starter, Quick Detachable Rear Wheel, Internal Expanding Front and Rear Brakes.

The general Specification of this Model as regards equipment is the same as Model H4 other than the following: Engine, fitted with Overhead Valves, Close Ratio Type Gear Box, giving 5.52, 6.78, and 10.3 to 1, with a 21 Tooth Sprocket, or Wide Ratio Gear Box can be had if desired, Racing Type Mudguards and Chain Guards. Twist-Grip Control to Carburettor.

SPEED APPROXIMATELY 70 M.P.H.

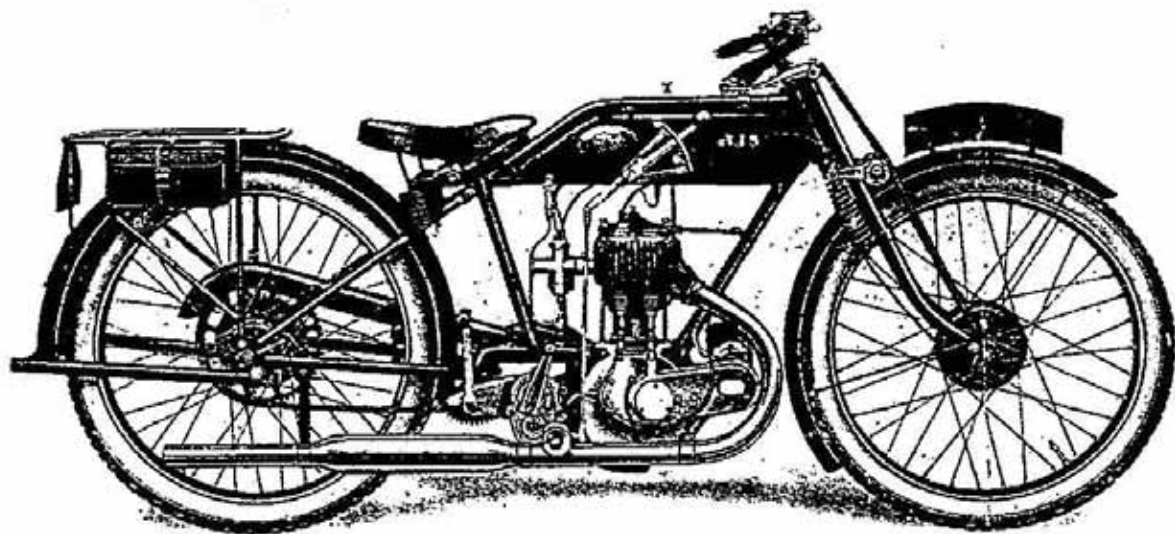
Price £53 : 0 : 0

Extra for Electric Lighting Set: Solo - - £6 : 15 : 0
Combination £7 : 5 : 0



*The A.J.S. 3.49 h.p. Overhead Valve Sporting
Model H6.*

(We reserve the right to modify or deviate from the above Specification and Prices without notice.)
All Prices in this List include Carriage per PASSENGER TRAIN AT OWNER'S RISK to any Station in the United Kingdom.
Owing to the present instability of the rubber market, all prices in this list are subject to any increase which may take place in tyre prices during the season.



The A.J.S. 3.49 h.p. Standard Sporting Model H5.

Fitted with All-Chain Drive, Three-Speed Gear, Hand-Controlled Clutch, Foot-Starter, Internal Expanding Front and Rear Brakes.

SPECIFICATION.

Engine. A.J.S. Design and Manufacture (74×81 m.m. Bore and Stroke, 349 c.c. capacity) fitted with Detachable Head. Aluminium Piston. Roller Bearing to Big End of Connecting Rod and Main Shafts. Large Mechanically Operated Valves. Adjustable Valve Tappets. Enclosed Valve Lifter. Efficient Cooling.

Carburettor. Binks.

Frame. Scientifically Constructed. Lightness with Strength.

Tank. Improved Design. Fitted with Large Petrol and Oil Caps. 1½ gall. Petrol. 1 qt. Oil.

Lubrication. Semi-Automatic Hand Pump. (Mechanical Lubrication can be fitted to order at £1 extra).

Ignition. Lucas Magneto. Handlebar Control.

Chains. Best quality ½ in. Pitch × ¾ in. wide. A Shock Absorber is fitted to the Engine Shaft.

Chain Guards. The top half only of the chain is covered, giving easy access to the Sprockets and Transmission.

Gear Box. A.J.S. Countershaft Three-Speed Gear fitted throughout with Ball Bearings. Operation by our Patent Gate Change Lever. Ratios, 5.5, 9.3, and 14 to 1.

Clutch. Hand-Controlled with Cork Inserts.

Tyres. 26 × 2375 Wired-on Dunlop Heavy Non-skid.

Brakes. Front and Rear Internal Expanding Type. Rear Brake operated by Pedal on left hand side of the machine. Front by lever on Handlebar. Both are extremely powerful and smooth acting.

Forks. Latest A.J.S. Design, fitted with Shock Absorbers, and all links adjustable for taking up side play.

Handlebars. Semi-T.T. Racing Type

Footrests. Adjustable, allowing the rider to procure the most suitable riding position.

Carrier. Built of Steel Tubing, with Welded Flush Joints.

Tool Cases. Two Pannier Bags, with Full Kit of Tools.

Starting. Improved Design Foot-Starter. Gives very easy starting.

Saddle. Terry Spring Seat No. 3.

Finish. Finest Black Enamel on our Special Rust Preventive Process, including the Handlebars, usual parts heavily Nickel-plated.

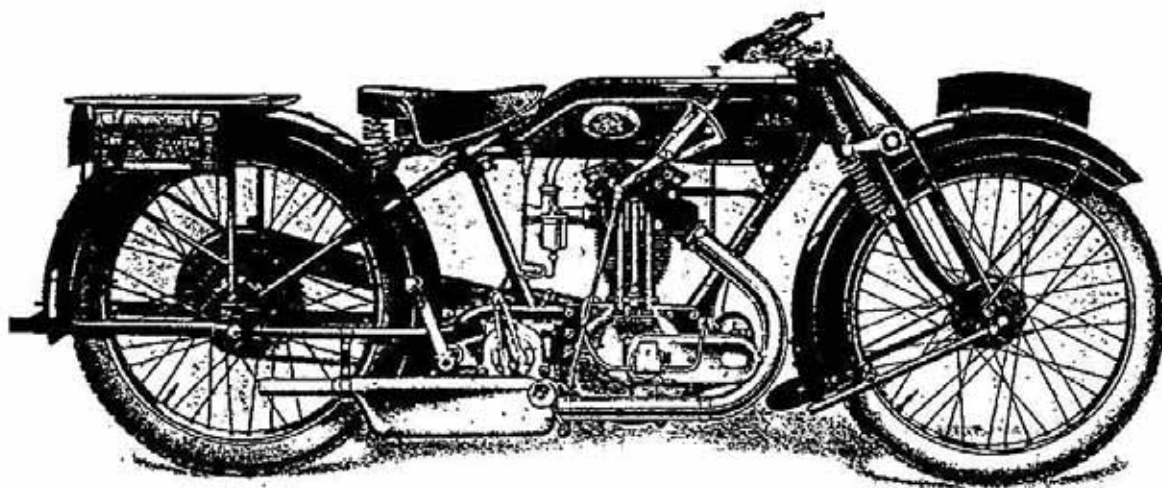
Measurements. Wheel Base, 4 ft. 5½ inches. Height of Saddle from ground, 28 inches.

Price £44 : 0 : 0

Extra for Electric Lighting Set: Solo - - £6 : 15 : 0
Combination £7 : 5 : 0

(We reserve the right to modify or deviate from the above Specification and Prices without notice.)

All Prices in this List include Carriage per PASSENGER TRAIN AT OWNER'S RISK to any Station in the United Kingdom. Owing to the present instability of the rubber market, all prices in this list are subject to any increase which may take place in tyre prices during the season.



The A.J.S. 4.98 h.p. Overhead Valve Machine, Model H 8.

Fitted with All-Chain Drive, Three-Speed Gear, Hand-Controlled Clutch, Foot-Starter, Quick Detachable Rear Wheel, Internal Expanding Front and Rear Brakes.

SPECIFICATION.

Engine. Overhead Valves. Single Cylinder (84×90 m.m. Bore and Stroke, 498 c.c. capacity). Fitted with Detachable Head, Aluminium Piston, Double Roller Bearing Big End, Roller Bearing Main Shaft, Enclosed Valve Lifter.

Carburettor. Binks with Twist-Grip Control.

Frame. Best Quality Tubing. Scientifically Constructed, Sidecar Lugs Integral.

Tank. Improved Design. 1½ gall. Petrol, 3 pints Oil.

Lubrication. Mechanical Oil Pump with Sight Feed and Auxiliary Hand Pump.

Ignition. Lucas Magneto. Handlebar Control.

Chains. Hans Renold, Extra Strong. ½ in. pitch. × ⅜ in. wide.

Chain Guards. Semi-enclosed type, giving easy access to the Transmission and Clutch.

Gear Box. A.J.S. Countershaft Three-Speed Gear, fitted throughout with Ball Bearings. Operated by Improved Gate Change. Ratios, 4.3, 8.6, and 15 to 1.

Clutch. Multiple Plate Type with Cork Inserts. Improved Operating Mechanism. Hand controlled.

Wheel. Rear A.J.S. Patent Quick Detachable.

Tyres. 26×3.25 Wired-on Dunlop Cord Heavy Non-skid.

Mudguards. Rear 7 in. wide. Front, Improved Design fitted with Valance and Flap.

Brakes. Front and Rear Internal Expanding. Extremely powerful and smooth acting. Rear operated by pedal on left-hand side of machine. Front by lever on left handlebar.

Forks. Latest A.J.S. Design. Links are adjustable for taking up side play. Lower links fitted with Shock Absorbers.

Handlebars. Semi T.T. pattern.

Footrests. Adjustable, allowing the rider to procure the most suitable riding position.

Stands. Fitted to Front and Rear Wheels.

Carrier. Built of Steel Tubing, with Welded Flush Joints.

Tool Cases. Two Pannier Bags, with Full Kit of Tools.

Starting. Improved Design Foot-Starter.

Saddle. Terry Spring Seat No. 2 de Luxe or Brooks Supple Seat B190/1C.

Finish. Finest Black Enamel on our Special Rust Preventive Process, including Handlebars, usual parts heavily Nickel-plated.

Measurements. Wheel Base 4 ft. 8 in.

Height of Saddle 28 in.

Ground Clearance 4½ in.

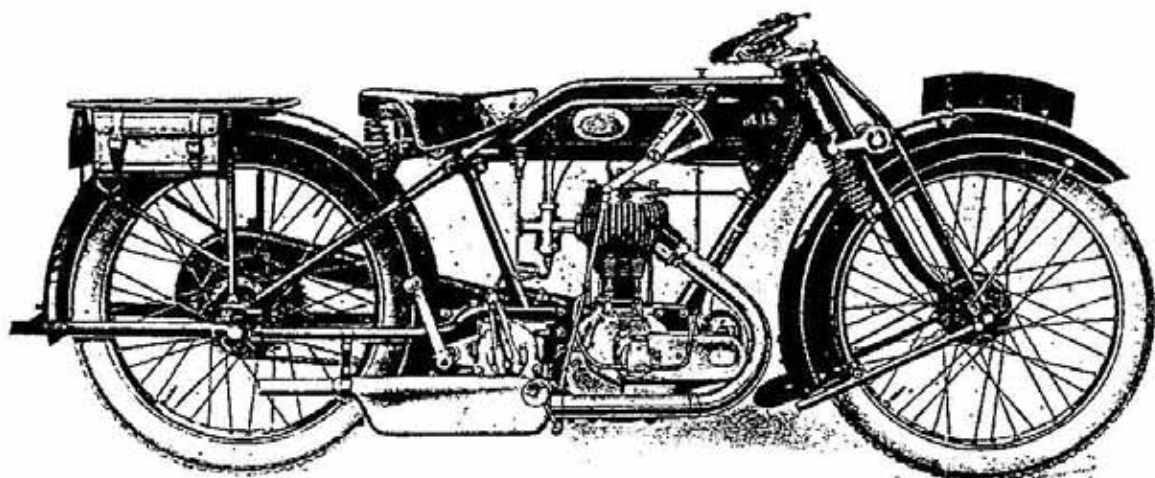
Weight. 274 lbs.

Price £62 : 10 : 0

Extra for Electric Lighting Set: Solo - - £6 : 15 : 0
Combination £7 : 5 : 0

(We reserve the right to modify or deviate from the above Specification and Prices without notice.)

All Prices in this List include Carriage per PASSENGER TRAIN AT OWNER'S RISK to any Station in the United Kingdom. Owing to the present instability of the rubber market, all prices in this list are subject to any increase which may take place in tyre prices during the season.



The A.J.S. 4.98 h.p. De Luxe Touring Machine, Model H 9.

Fitted with All-Chain Drive, Three-Speed Gear, Hand-Controlled Clutch, Foot-Starter, Quick Detachable Rear Wheel, Internal Expanding Front and Rear Brakes.

SPECIFICATION.

Engine. Side-by-Side Valves, Single Cylinder (84×90 m.m. Bore and Stroke, 498 c.c. capacity). Fitted with Detachable Head, Aluminium Piston, Double Roller Bearing Big End, Roller Bearing Main Shaft, Enclosed Valve Lifter

Carburettor. Binks with Twist-Grip Control.

Frame. Best Quality Tubing, Scientifically Constructed, Sidecar Lugs Integral.

Tank. Improved Design, 1½ gall. Petrol, 3 pints Oil.

Lubrication. Mechanical Oil Pump with Sight Feed and Auxiliary Hand Pump.

Ignition. Lucas Magneto. Handlebar Control.

Chains. Hans Renold, Extra Strong, ½ in. pitch. × ½ in. wide.

Chain Guards. Semi-enclosed type, giving easy access to the Transmission and Clutch.

Gear Box. A.J.S. Countershaft Three-Speed Gear, fitted throughout with Ball Bearings. Operated by Improved Gate Change. Ratios, 4.3, 8.6, and 15 to 1.

Clutch. Multiple Plate Type with Cork Inserts. Improved Operating Mechanism. Hand controlled.

Wheel. Rear A.J.S. Patent Quick Detachable.

Tyres. 26×3 25 Wired-on Dunlop Cord Heavy Non-skid.

Mudguards. Rear 7 in. wide. Front, Improved Design fitted with Valance and Flap.

Brakes. Front and Rear Internal Expanding. Extremely powerful and smooth acting. Rear operated by pedal on left-hand side of machine. Front by lever on left handlebar.

Forks. Latest A.J.S. Design. Links are adjustable for taking up side play. Lower links fitted with Shock Absorbers.

Handlebars. Semi T.T. pattern

Footrests. Adjustable, allowing the rider to procure the most suitable riding position.

Stands. Fitted to Front and Rear Wheels.

Carrier. Built of Steel Tubing, with Welded Flush Joints.

Tool Cases. Two Pannier Bags, with Full Kit of Tools.

Starting. Improved Design Foot-Starter.

Saddle. Terry Spring Seat No. 2 de Luxe or Brooks' B190/1C.

Finish. Finest Black Enamel on our Special Rust Preventive Process, including Handlebars, usual parts heavily Nickel-plated.

Measurements. Wheel Base 4 ft. 8 in.

Height of Saddle 28 in.

Ground Clearance 4½ in.

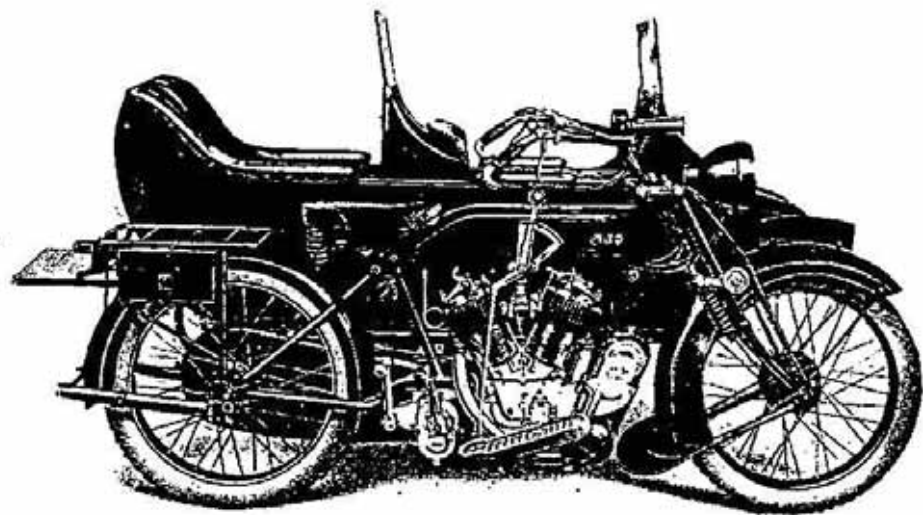
Weight. 274 lbs.

Price £56 : 0 : 0

Extra for Electric Lighting Set: Solo - - £6 : 15 : 0
Combination £7 : 5 : 0

(We reserve the right to modify or deviate from the above Specification and Prices without notice.)

All Prices in this List include Carriage per PASSENGER TRAIN AT OWNER'S RISK to any Station in the United Kingdom.
Owing to the present instability of the rubber market, all prices in this list are subject to any increase which may take place in tyre prices during the season.



The A.J.S. 7.99 h.p. Two-Seater Sidecar Combination.

THIS Sidecar incorporates all the well-known design-features of the A.J.S. Single-Seater Body, plus the fitting of the extra seat. The two seats are arranged Tandem fashion, the extra or front one being remarkably comfortable and spacious enough for an adult. The back rest is cleverly formed by utilising the hinged dash of the rear seat, which is shaped and upholstered. The seat itself is attached to the Sidecar body on the right-hand side and can be folded back when entrance or exit is being made by the rear passenger. Access to either front or rear is by a single door, and lifting up the hinged dash. The Two-Seater Sidecar has been extensively tested over many seasons now, and we have no hesitation in recommending it as an ideal dual passenger vehicle. The inclusion of the extra seat has been effected without in any way detracting from the general appearance, and the overall length of the body is but 6 ft. 6 in. The Standard equipment includes two Windscreens and two Aprons.

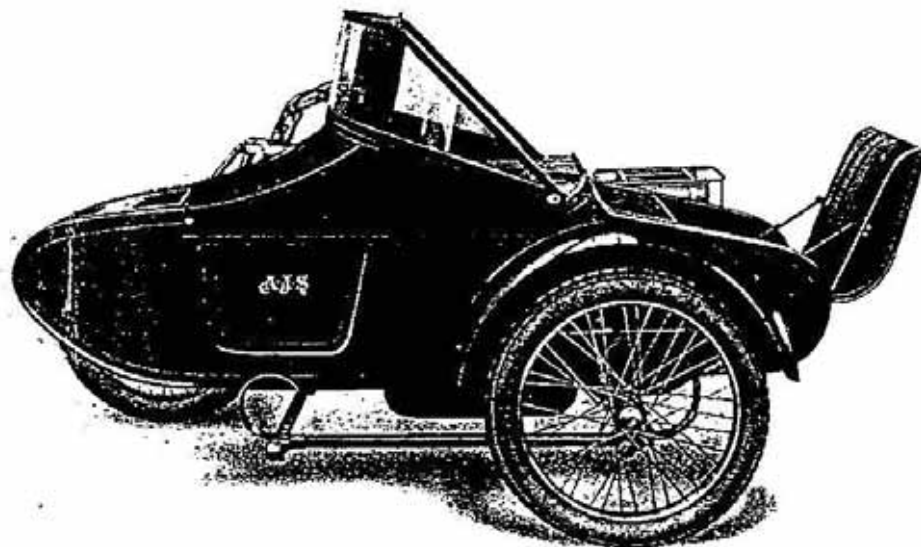
This Two-Seater Sidecar can be fitted in place of the single-seater on the 7.99 h.p. Model H1 at an extra of £5 : 0 : 0, and on the 7.99 h.p. Model H2 at an extra of £10 : 0 : 0. Extra for Hood, £3 : 0 : 0. Hood Side Screens per set of three, £3 : 10 : 0. The two-seater chassis is fitted with detachable wheel.

The A.J.S. Occasional Two-Seater Sidecar.

AS its name implies, this Sidecar has been designed to meet the requirements of those who desire a body which can, if required, be called into requisition to accommodate a second passenger or as luggage space. The Sidecar illustrated will be found to be ideal for this purpose. The second seat is housed in the extension at the rear of the body, and when not in use is folded up so compactly that the appearance is that of a single-seater body only. The seat will hold an adult with ease, and ample leg room is afforded by a well in the floor of the body. Specification includes Windscreen and Stormproof Apron.

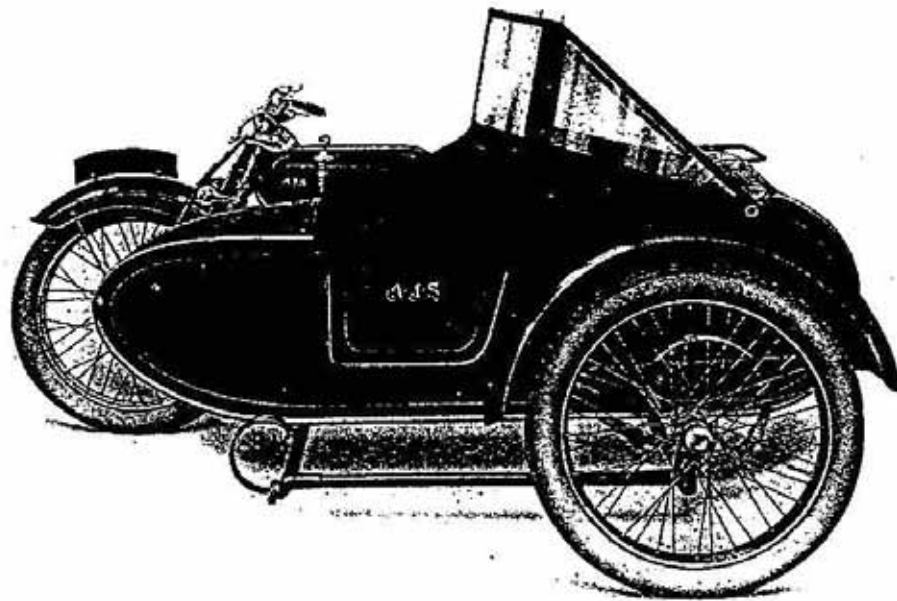
This Occasional Two-Seater can be fitted to the H 1 chassis if desired.

Fitted to the Model H1 7.99 h.p. De Luxe Chassis	PRICE	£98 : 0 : 0
Fitted to the Model H2 7.99 h.p. Standard Chassis	PRICE	£85 : 0 : 0



(We reserve the right to modify or deviate from the above Specification and Prices without notice.)

All Prices in this List include Carriage per PASSENGER TRAIN AT OWNER'S RISK to any Station in the United Kingdom. Owing to the present instability of the rubber market, all prices in this list are subject to any increase which may take place in tyre prices during the season.



The A.J.S. 4.98 h.p. Sidecar Combination.

WE have introduced a special Touring Sidecar for use with our 4.98 h.p. machine, which is illustrated above. This sidecar is constructed with the usual A.J.S. attention to detail, and the workmanship and materials are of the very best quality. Its graceful lines are apparent from the illustration. A large locker is provided at the rear of the body, and the specification includes Windscreen and Stormproof Apron.

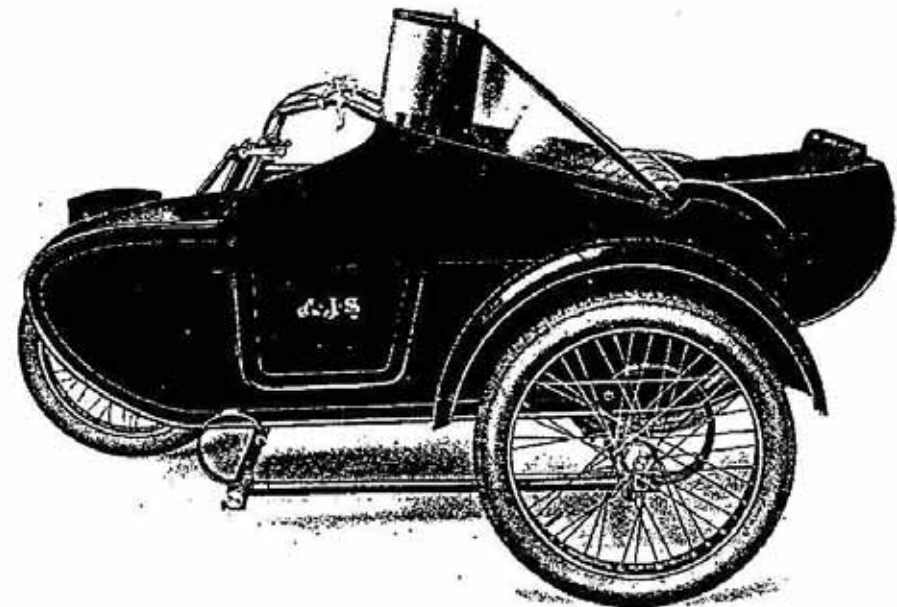
PRICE H8 Combination ... £79 : 0 : 0
 PRICE H9 Combination ... £72 : 0 : 0

In conjunction with this body a new chassis has been designed, to which, if desired, the purchaser can have a variety of sidecars fitted. See detailed list below:—

4.98 h.p. Model H8 fitted with Aluminium Sports Sidecar ...	PRICE	£80 : 0 : 0
4.98 h.p. Model H8 fitted with Super Sports Sidecar ...	PRICE	£84 : 10 : 0
4.98 h.p. Model H9 fitted with Aluminium Sports Sidecar ...	PRICE	£73 : 10 : 0
4.98 h.p. Model H9 fitted with Super Sports Sidecar ...	PRICE	£78 : 0 : 0

The following sidecars are also suitable for the 4.98 h.p. machine:—

Standard Sports Aluminium Sidecar on Lightweight Chassis ...	PRICE	£16 : 10 : 0
Super Sports Aluminium Sidecar on Lightweight Chassis ...	PRICE	£20 : 10 : 0
Special Racing Sidecar on Lightweight Chassis ...	PRICE	£27 : 0 : 0



The A.J.S. Sidecar with Child's Seat.

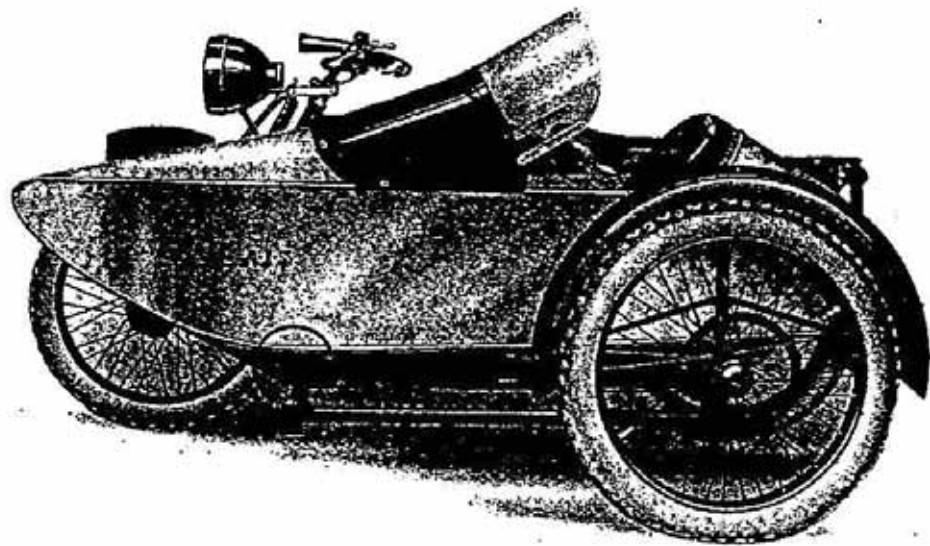
MANY attempts have been made to devise a safe and compact compartment in which the younger generation of the family can be carried; and the A.J.S. Sidecar with Child's Seat supplies a long felt want in this direction. To anyone seeing this sidecar with the seat closed up, the existence of such a fitment would not be suspected, as the whole folds down into the body of the locker when not in use. The seat is provided with side panels, so that the child is as well protected as its parent in the front seat.

This type of body can be fitted to either the H1 or H2 chassis. Specification includes Windscreen and Stormproof Apron.

Fitted to Model H1 7.99 h.p. De Luxe machine	PRICE	£96 : 0 : 0
Fitted to Model H2 7.99 h.p. Standard machine	PRICE	£83 : 0 : 0

(We reserve the right to modify or deviate from the above Specification and Prices without notice.)

All Prices in this List include Carriage per PASSENGER TRAIN AT OWNER'S RISK to any Station in the United Kingdom. Owing to the present instability of the rubber market, all prices in this list are subject to any increase which may take place in tyre prices during the season.



The A.J.S. Standard Aluminium Sports Sidecar.

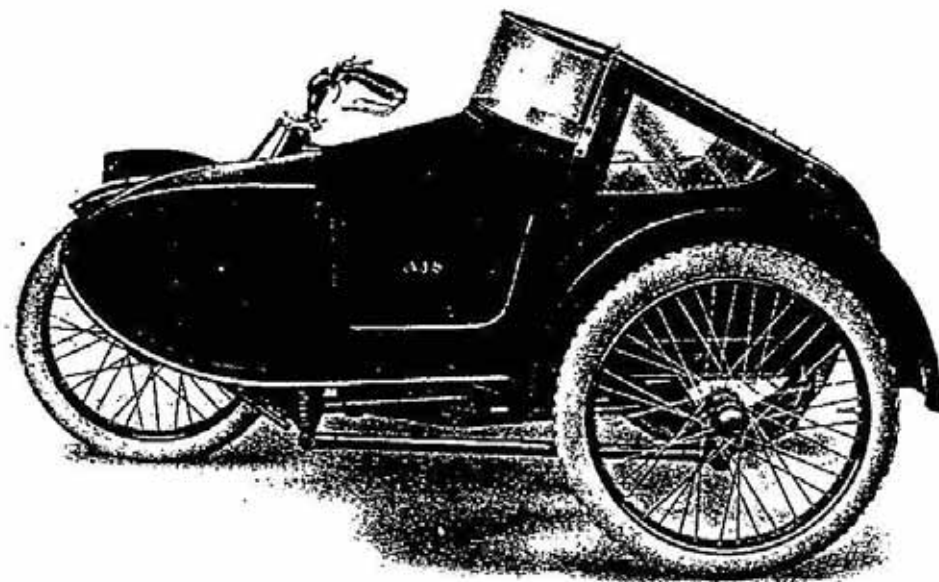
THIS illustration shows our Standard Aluminium Sports Sidecar attached to the 7.99 h.p. machine. The Body is coach built and covered with aluminium panels with special "frosted finish." It is roomy and comfortable, fitted with spring back, etc., and upholstered in fine quality material. A large locker is situated at the rear. The chassis is of great strength with duplex axle tubes. Cee spring suspension is provided at front and rear.

Fitted to Model H1 7.99 h.p. machine and chassis	...	PRICE	£93 : 0 : 0
Fitted to Model H2 7.99 h.p. machine and chassis	...	PRICE	£81 : 0 : 0
Fitted to Model H8 4.98 h.p. machine and chassis	...	PRICE	£80 : 0 : 0
Fitted to Model H8 4.98 h.p. machine on Lightweight chassis	...	PRICE	£79 : 0 : 0
Fitted to Models H3 & H4 machines on Lightweight chassis	...	PRICE	£65 : 0 : 0
Fitted to Model H5 machine on Lightweight chassis	...	PRICE	£60 : 10 : 0
Fitted to Model H6 machine on Lightweight chassis	...	PRICE	£69 : 10 : 0

The A.J.S. Lightweight Touring Sidecar.

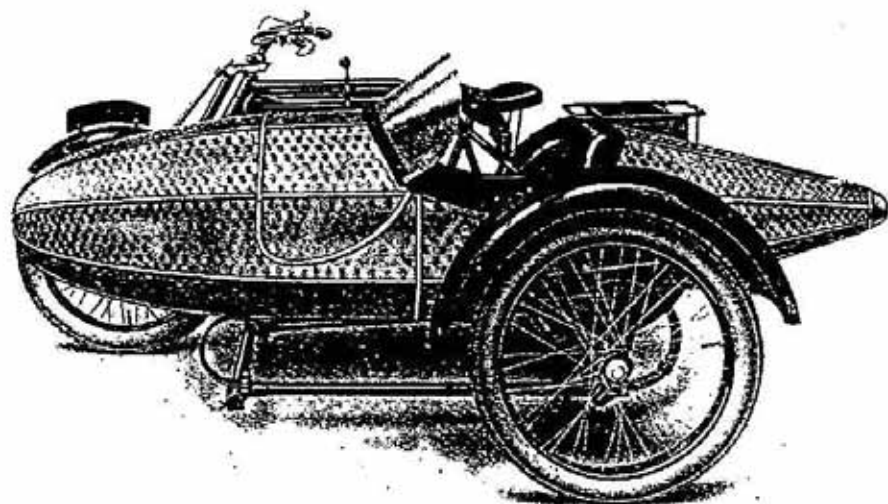
THIS Model represents the ideal Lightweight Touring Sidecar, its many detailed refinements placing it far in advance of any other similar type on the market. The body is coach built, covered with steel panelling, and painted black. It has been designed with every allowance for the passenger's comfort, and the rear is fitted with a spacious locker, the back of the seat being hinged to give access to this. Upholstery is of the best quality, and the suspension is by Cee springs at the rear and by coil at the front. The standard specification includes Windscreen and Apron.

Fitted to Model H5 3.49 h.p. machine	...	PRICE	£59 : 0 : 0
Fitted to Models H3 and H4 3.49 h.p. machines	...	PRICE	£63 : 10 : 0
Fitted to Model H6 3.49 h.p. machine	...	PRICE	£68 : 0 : 0
Fitted to Model H8 4.98 h.p. machine	...	PRICE	£77 : 10 : 0



(We reserve the right to modify or deviate from the above Specification and Prices without notice.)

All Prices in this List include Carriage per PASSENGER TRAIN AT OWNER'S RISK to any Station in the United Kingdom. Owing to the present instability of the rubber market, all prices in this list are subject to any increase which may take place in tyre prices during the season.



The A.J.S. Super-Sports Aluminium Sidecar.

THE most handsome and striking Sidecar on the market. Owing to its correct streamline, it is suitable for track, road-racing, or the sportsman on tour. It represents the last word in sporting outfits. The body is coach built; covered with aluminium with our special "frosted finish." The lift-up dash also forms the door; whilst the equipment includes Windscreen and Apron. Ample locker space is provided at the rear.

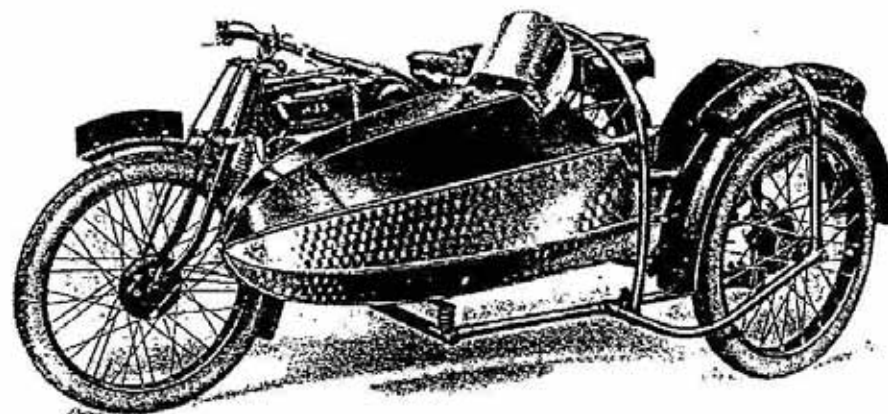
Fitted to Model	H1 7.99 h.p. machine and chassis	PRICE	£98 : 0 : 0
Fitted to Model	H1 7.99 h.p. machine on H2 chassis	PRICE	£96 : 0 : 0
Fitted to Model	H2 7.99 h.p. machine and chassis	PRICE	£86 : 0 : 0
Fitted to Model	H8 4.98 h.p. machine and chassis	PRICE	£84 : 10 : 0
Fitted to Model	H8 4.98 h.p. machine on Lightweight chassis	PRICE	£83 : 0 : 0
Fitted to Models	H3 & H4 machines on Lightweight chassis	PRICE	£69 : 0 : 0
Fitted to Model	H5 machine on Lightweight chassis	PRICE	£64 : 10 : 0
Fitted to Model	H6 machine on Lightweight chassis	PRICE	£73 : 10 : 0

The A.J.S. Special Racing Sidecar.

THIS body and chassis are exactly as used on the A.J.S. machines in the 1925 Sidecar T.T. Races.

The body is constructed of aluminium and is of correct stream-line design; and finished in our special "frosted" process. It is an ideal sporting sidecar and at the same time is very attractive in appearance. The upholstery is of the best quality, and it is well padded and sprung. There are also special cushions on the top of the mudguard and a loop-frame over the passenger for cornering purposes. Four point attachment is provided to the motor cycle. This Sidecar is suitable for fitting to any of the models detailed below:—

Fitted to Model	H1 7.99 h.p. De Luxe machine	PRICE	£100 : 0 : 0
Fitted to Model	H2 7.99 h.p. Standard machine	PRICE	£90 : 0 : 0
Fitted to Model	H8 4.98 h.p. O.H.V. machine	PRICE	£89 : 10 : 0
Fitted to Models	H3 & H4 3.49 h.p. Side Valve machine	PRICE	£75 : 10 : 0
Fitted to Model	H5 3.49 h.p. Side Valve machine	PRICE	£71 : 0 : 0
Fitted to Model	H6 3.49 h.p. O.H.V. Racing machine	PRICE	£80 : 0 : 0



(We reserve the right to modify or deviate from the above Specification and Prices without notice.)

All Prices in this List include Carriage per PASSENGER TRAIN AT OWNER'S RISK to any Station in the United Kingdom. Owing to the present instability of the rubber market, all prices in this list are subject to any increase which may take place in tyre prices during the season.

Some Outstanding Performances in Open Competition during 1926.

BRITISH ISLES.

ISLE OF MAN.

TOURIST TROPHY RACES, SENIOR T.T. The 4.98 h.p. A.J.S. established Two Record Laps at over 70 miles per hour. Also Third and Sixth places were gained by A.J.S. machines.

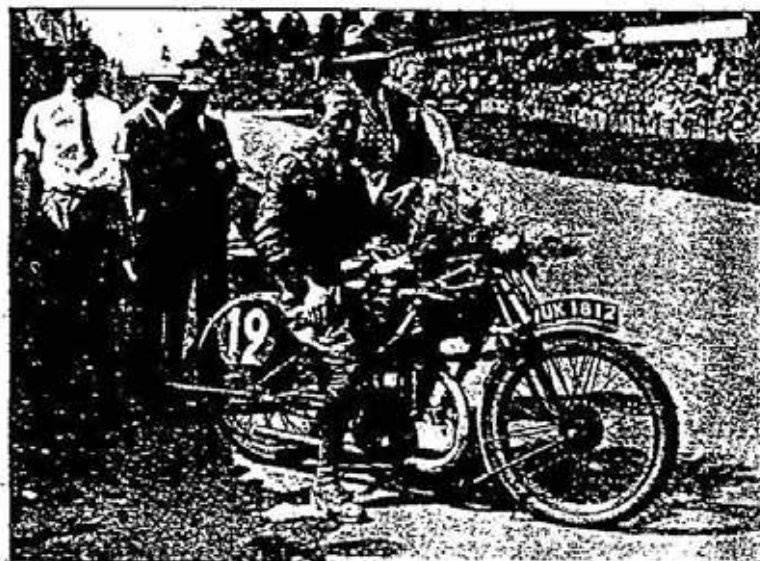
JUNIOR T.T. Second, Seventh and Eighth places were obtained by 3.49 h.p. A.J.S. models.

AMATEUR T.T. SENIOR RACE. First and Fastest Lap, 4.98 h.p. A.J.S.

SCOTLAND.

SCOTTISH SIX DAYS TRIAL. Two Silver Cups—Highest Awards—out of four secured by Sidecar machines, were gained by the A.J.S., viz.: 4.98 h.p. and Sidecar and 7.99 h.p. and Sidecar, both of which came through without loss of marks.

SCOTTISH SPEED CHAMPIONSHIP. 350 c.c. **CHAMPIONSHIP** won by the 3.49 h.p. A.J.S. Also Second and Fourth places.



Mr. J. H. Simpson on his 4.98 h.p. A.J.S. after Winning the 500 c.c. Class in the 1926 Grand Prix d'Europe. Shortly afterwards he won the 350 c.c. Class German Grand Prix mounted on a 3.49 h.p. A.J.S. and made Fastest Lap all classes at 85.24 m.p.h.



An impression of Mr. J. H. Simpson cornering at Ramsey in the 1926 Senior T.T. Race, in which he broke all records by covering Two Laps at over 70 miles per hour.

WALES.

WELSH T.T. RACES. 350 c.c. Class won by the 3.49 h.p. A.J.S.

PENDINE OPEN SPEED TRIALS.

10 Miles CHAMPIONSHIP, and the **1 Mile SPRINT Races** won by the 3.49 h.p. A.J.S.

IRELAND.

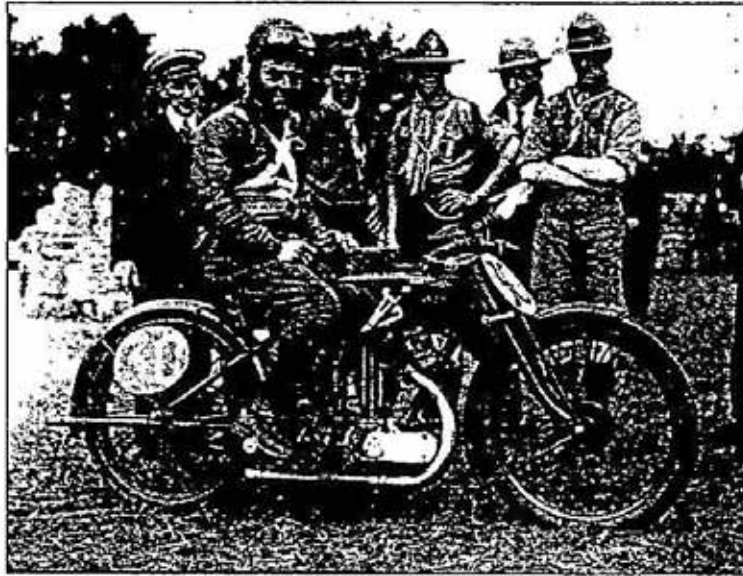
LEINSTER "HUNDRED" MILES ROAD RACE, won by the 3.49 h.p. A.J.S., gaining the Hutchinson Trophy.

IRISH CHAMPIONSHIP RACES. 3.49 h.p. A.J.S. made Fastest Lap in the 350 c.c. Class.

ENGLAND.

INTERNATIONAL SIX DAYS TRIALS. Four A.J.S. machines entered, consisting of one 4.98 h.p. model with Sidecar, and three 3.49 h.p. Solo models. All gained Gold Medals—Highest Awards.

VICTORY CUP TRIAL. A 3.49 h.p. A.J.S. made Best Performance of any Motor Cycle, winning the Henley Cup and Gold Medal, also the Turner Cup and Gold Medal, and Two Gold and Three Silver Medals were gained by 3.49 h.p. A.J.S. models.



Mr. F. A. Longman, who gained Third place in the 1926 Senior T.T. on his 4.98 h.p. A.J.S. In the Grand Prix d'Europe he obtained 1st place in the 350 c.c. class on a 3.49 h.p. A.J.S.

ABROAD.

AUSTRALIA.

SENIOR GRAND PRIX. 4.98 h.p. A.J.S. models gained First and Second places.

JUNIOR GRAND PRIX. 3.49 h.p. A.J.S. First, Second, Third and Fourth.

SILVER CUP RACE, 4.98 h.p. A.J.S. First and Second in the 500 c.c. Class, and First in the All-Powers Handicap at an Average Speed of 89 m.p.h. Also Fastest Lap at 93 m.p.h.

SOUTH AFRICA.

NATAL 100 MILES HANDICAP ROAD RACE. A 3.49 h.p. A.J.S. and Sidecar gained First place. Another 3.49 h.p. model starting from scratch made Fastest Time of the Day; and a third A.J.S. 3.49 h.p. model made Second Fastest Time.

BELGIUM.

GRAND PRIX d'EUROPE. 500 c.c. Class. 4.98 h.p. A.J.S. First in Record Time. 350 c.c. Class. 3.49 h.p. A.J.S. First.

LONDON—LAND'S END TRIAL. Nine Gold and Two Silver Medals were gained by A.J.S. machines.

COLMORE CUP TRIAL. Three Gold and Two Silver Medals gained by the A.J.S. Out of 235 picked riders and machines, Two A.J.S. machines made First and Second Fastest Times of the Day in the Acceleration Test.

TRAVERS TROPHY TRIAL. Best Performance of the Day made by the 3.49 h.p. A.J.S. and Sidecar, winning the Premier Award and Gold Medal. Also N.U.T. Trophy and Gold Medal. This machine also made Fastest Sidecar Time in the Speed Hill Climb. Four other Awards were also gained by A.J.S. motor cycles.

MANVILLE TROPHY TRIAL. 3.49 h.p. A.J.S. won the Premier Award for Best Performance of the Day.

WESTERN CENTRE OPEN RELIABILITY TRIAL. 4.98 h.p. A.J.S. won the Premier Award, The Cheltenham Challenge Cup, for Best Performance of the Day. Also the Gibb Trophy and Nulsee Challenge Trophy.

ACE M.C. MIDLAND DAILY TELEGRAPH RELIABILITY TRIAL. Premier Award, Cup for Best Performance of the day, won by 3.49 h.p. A.J.S.



By permission of "Motor Cycling."

Mr. G. E. Rowley, Winner of the 350 c.c. Welsh T.T. Race, on his 3.49 h.p. A.J.S.

Some Outstanding Performances in Open Competition during 1926—continued.



The A.J.S. Solo Team in the International Six Days Trial. Left to right—Messrs. G. E. Rowley, C. W. Hough, and C. E. Wise, on 3.49 h.p. Models. They all gained Highest Awards.

SPAIN.

RABASSADA HILL CLIMB. 3.49 h.p. A.J.S. First in the 350 c.c., 600 c.c. and 1,000 c.c. Classes; also establishing Record Time for the Hill.

BARCELONA—SAN SEBASTIAN RACE. 4.98 h.p. A.J.S. First, winning the Silver Cup.

JAPAN

SPEED CHAMPIONSHIP OF WESTERN JAPAN. 350 c.c. Class. 3.49 h.p. A.J.S. machines First, Second and Third.

ROUMANIA.

ROUMANIAN CUP TRIAL. A 3.49 h.p. A.J.S. won the Premier Award.

CZECHO-SLOVAKIA.

SILESIA RACE. 3.49 h.p. A.J.S. won the General Class and made Fastest Time in the Hill Climb.

FRANCE.

CIRCUIT de GATTIERES. 350 c.c. Class. 3.49 h.p. A.J.S. First and Record Lap. Also Fastest Time all Classes.

CABRIS HILL CLIMB. A 3.49 h.p. A.J.S. and Sidecar made Fastest Sidecar Time of the Day, and established a Record for the Course.

GERMANY.

GRAND PRIX RACE. 3.49 h.p. A.J.S. First in the 350 c.c. Class and Fastest Lap all Classes at 85.24 miles per hour.

SOLITUDE RACE. 3.49 h.p. A.J.S. First in the 350 c.c. Class.

GORLITZ RACE. 3.49 h.p. A.J.S. First and Second in the 350 c.c. and 500 c.c. Classes; Also Fastest Times of the Day.

ZOBTEN HILL CLIMB. 3.49 h.p. A.J.S. machines First and Second in the 350 c.c. Class; and First in the 1,000 c.c. Class. In the 500 c.c. Class a 4.98 h.p. A.J.S. was First and made Fastest Time of the Day.



By permission of "Motor Cycling."
Mr. Frank W. Giles, with his 4.98 h.p. A.J.S. and Sidecar in the Scottish Six Days Trial. This picture gives some idea of what a motor cycle has to go through in a Scottish Six Days. Imagine 9 miles of this surface! The 4.98 h.p. A.J.S. lost no marks and gained Highest Award. A similar Combination came through the International Six Days Trial without the loss of a single mark, obtaining highest possible award.

"SYMPHONY"

Radio Receivers



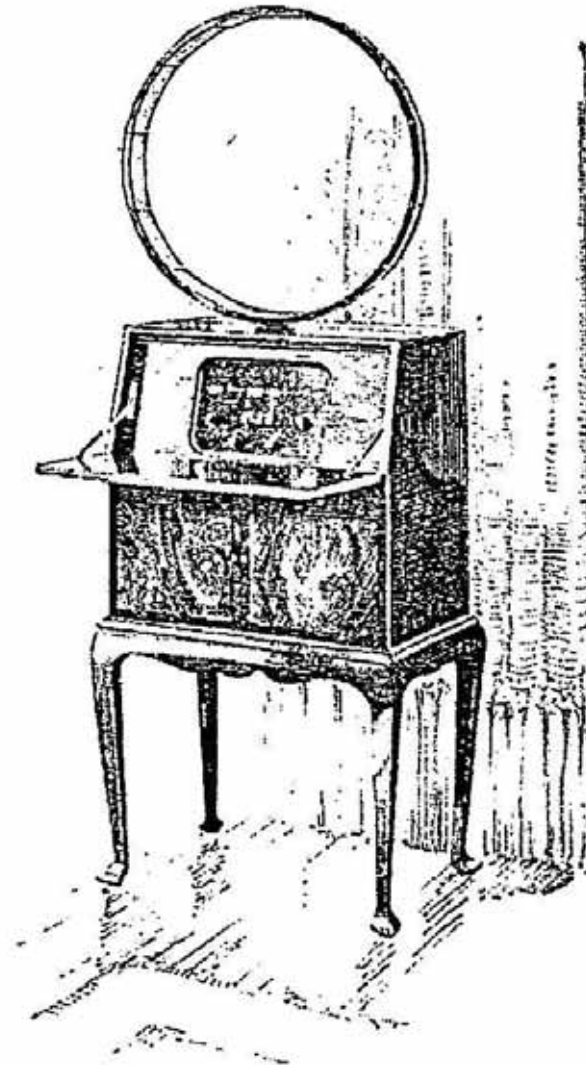
WILL you permit us to demonstrate the perfect re-creation of Broadcast Programmes rendered by a "Symphony" Receiver in your own home.

We suggest this course because it is in these surroundings that the receiver of your choice will be used, and not in some specially appointed demonstration room arranged for such purposes. Moreover because only in your home will its beautiful cabinet work be fully appreciated.

The top illustration shows the "Two" or "Three". They are identical in appearance. All Batteries being enclosed, only the Aerial and Earth Wires leave the Receivers.

All prices include Royalties, Valves, Aerial Equipment, Loud Speaker and all Batteries.

	£	s.	d.
2 Valve, type Z	13	18	6
"Symphony Two," illustrated above	17	10	0
"Symphony Three," identical to the "Two"	25	0	0
"Symphony Five," Table Model	45	0	0
"Symphony Five," Bureau Model	52	10	0
"Symphony Seven," Table Model	60	0	0
"Symphony Seven," Bureau Model, illustrated on the right	67	10	0



A. J. S.

A. J. STEVENS & CO. (1914) LTD.,
RADIO BRANCH, WOLVERHAMPTON.

Telephone—1748. Telegrams—"Reception, Wolverhampton."
London Showrooms—122-124, CHARING CROSS ROAD, W.C.2.
Telephone—Regent 7161. Telegrams—"Ajayessco, Westcent, London."

Terms of Business.

PAYMENT

One-third Cash with order and balance against invoice when machine is ready for delivery. We accept orders only on the condition that the prices in this list are subject to alteration without notice, and goods will be invoiced at the prices ruling at time of delivery.

CARRIAGE.

Delivery free to any railway station in the United Kingdom per PASSENGER TRAIN AT OWNER'S RISK. If delivery is required per Goods Train, crates will be charged for at current prices and strictly non-returnable.

RAILWAY TRANSIT.

All machines should, on arrival, be carefully examined, and if damaged, sign for as such, and an immediate claim made on the carriers. *The sale of all A.J.S. Motor Cycles, Sidecars, parts thereof and accessories for same, is upon the terms that delivery is effected when the goods are handed to the carriers, addressed as per consignee's instructions.*

THE "A.J.S." GUARANTEE.

Every care is taken in the manufacture of A.J.S. Motor Cycles; if, however, any part or parts shall be or become defective through faulty workmanship or material at any time within six months from the date of purchase, we hereby undertake to exchange or repair such part or parts subject to and in accordance with the following conditions:—

In the case of machines which have been used for "hiring out" purposes, or from which our trade mark or manufacturing number has been removed, no guarantee of any kind is given or is to be implied.

We guarantee, subject to the conditions mentioned, that all precautions that are usual and reasonable have been taken by us to secure excellence of materials and workmanship, and damages for which we make ourselves responsible under this guarantee are limited to the replacement of any part which may have proved defective, and any work involved in the replacement of such part or parts will be charged for.

We undertake, subject to the conditions mentioned, to make good at any time within six months any defects in these respects. As motor cycles are easily liable to derangement by neglect or misuse, this guarantee does not apply to defects caused by wear and tear, misuse or neglect.

The term "misuse" shall include amongst others the following acts

- I. The attaching of a sidecar to the motor cycle in such a manner as to cause damage, or calculated to render the latter unsafe when ridden.
- II. The use of a motor cycle, or of a motor cycle and sidecar combined, when carrying more persons or a greater weight than that for which the machine was designed by the manufacturers.

Any motor cycle sent to us to be plated, enamelled, or repaired, whether the repairs are required for the purpose of making good the defect before referred to or otherwise, will be repaired upon the following conditions, i.e., we guarantee that all precautions which are usual and reasonable have been taken by us to secure excellence of material and workmanship, such guarantee to extend and be in force for six months only from the time such work shall have been executed, and this guarantee is in lieu and in exclusion of any common law or statute warranty, and the damages recoverable are limited to the cost of any further work which may be necessary to amend and make good the work found to be defective.

CONDITIONS OF GUARANTEE.

If a defective part should be found in our motor cycles, or in any part replaced, it must be sent to us carriage paid, and accompanied by an intimation from the sender that he desires to have it repaired free of charge, under our guarantee, and he must also furnish us at the same time with the number of the signed guarantee (see below), the number of the machine, the name of the Agent from whom he purchased, and the date of purchase, or the date when the alleged defective part was replaced, as the case may be.

Failing compliance with the above no notice will be taken of anything which may arrive, but such articles will lie here at the risk of the senders, and this guarantee, and any implied guarantee shall not be enforceable.

WE GUARANTEE ONLY THOSE MACHINES WHICH ARE BOUGHT EITHER FROM US OR FROM ONE OF OUR DULY AUTHORISED AGENTS, AND UNDER NO OTHER CONDITIONS.

We do not guarantee the specialities of other firms, such as magnecos, carburettors, tyres, saddles, chains, lamps, tools, etc., or of any component part supplied to the order of the purchaser differing from our standard specification supplied with our motor cycles, or otherwise.

We give the above guarantee with our motor cycles instead of the guarantee implied by Statute or otherwise, as to the quality and fitness of such machines for the purpose of motor cycling; any such implied guarantee being in all cases excluded.

A postcard is enclosed with each new A.J.S. Motor Cycle, which when duly filled in and returned to us, entitles the purchaser to a signed Guarantee for six months, and an Instruction Booklet. Unless the purchaser is in possession of a numbered and signed Guarantee, we do not undertake repairs or supply replacements under our Guarantee.

THE TERM "AGENT"

is used in a complimentary sense only and those firms whom we style our agents are not authorised to advertise, incur any debts, or transact any business whatsoever on our account other than the sale of goods which they may purchase from us; nor are they authorised to give any warranty or make any representation on our behalf other than those contained in the above guarantee.

A. J. STEVENS & CO. (1914) LTD.

Motor **A·J·S** Cycles

MANUFACTURED THROUGHOUT BY

A. J. STEVENS & CO. (1914) LTD., WOLVERHAMPTON.

TELEGRAMS:
"Hopit. Wolverhampton.

CODES:
A.B.C. 5th Edition.
A.B.C. 6th Edition.
-- Bentleys.
Marconi International.

TELEPHONE:
1731 Wolverhampton (5 lines).