



&



HUB, REAR WHEEL – RIGID ONLY

ASSEMBLY GUIDE

1946 - 1947 AJS Models 16, 18,

and

MATCHLESS G3L, G80

12th JANUARY 2024

by

John Ready

john.ready@outlook.com.au

INTRODUCTION.

This guide is produced to allow the author to assemble parts for year/model specific restorations. I hope that this information is of value to other collectors.

My interest is assembling bikes which are correct for the year and model. Whilst all the bikes are not necessarily “correct” I am always on the lookout for the “correct” part. Like all addicts, I will never “be finished”.

DISCLAIMER.

This Restoration Guide has been prepared solely for the use of John Ready. Use by any other party is completely at the risk of that party.

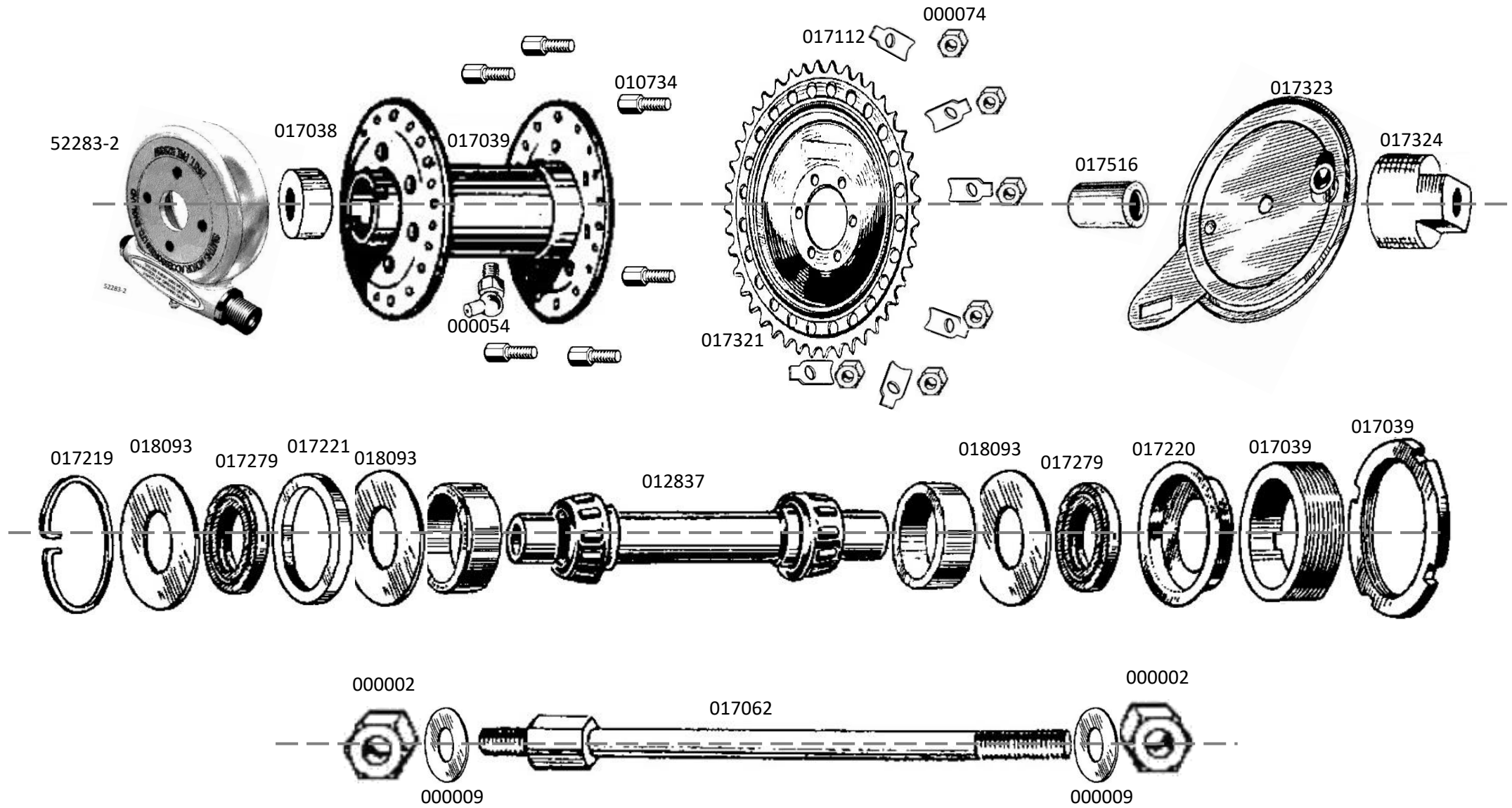
John Ready neither undertakes or accepts any liability in any way whatsoever to other any, in respect of the data herein contained including any errors or omissions however caused.

COPYRIGHT STATEMENT.

Many images are those of other people from the internet. Unfortunately, I cannot acknowledge these parties as I do not know who they are. Most are from the various Spare Parts Manuals produced by A.J. Stevens, Matchless and later by AMC. My thanks to those whose images allow this guide to function.

As the copyright, if any, cannot be identified, this publication is not for commercial gain but is designed to assist AJS and Matchless fanatics to assemble parts for particular models.

1946 - 1947 350cc & 500cc AJS Models 16, 18 and Matchless G3L, G80



1946 - 1947 350cc & 500cc AJS Models 16, 18 and Matchless G3L, G80

Description	No Off	Part No	Part No. To Use
Hub, rear wheel, shell only	1	41-G3L-H2	017039
Nipple, grease, for rear wheel hub, straight	1	STD-51	000051
Spindle, hollow, with roller bearings, rear wheel	1	11905	012837
Ring, spring, locating rear hub bearings	1	11910	017219
Cup, for rear hub bearing oil seal	1	11911	017220
Nut, for rear wheel solid spindle	2	STD-2	000002
Nut, lock, for the rear hub bearing adjusting ring	1	11914	017223
Oil-seal, for rear hub bearings	2	11909	017279
Ring, adjusting, for the rear hub bearings	1	11915	017224
Ring, retaining rear hub bearing oil seals	3	11913	018093
Ring, spacing, for hub bearing oil-seal	1	11912	017221
Sprocket and brake drum, for rear wheel, 42 teeth, six hole fixing	1	41-G3-B15	017321
Bolt, retaining sprocket to rear hub	6	37-12-H17	010734
Nut, sprocket retaining bolt	6	STD-74	000074
Lock washer, for sprocket bolt	6	38-12-H18	017112
Spindle, centre, solid, for rear wheel	1	41-G3L-H4-A	017062
Plate, cover, rear brake	1	41-G3L-B20	017323
Spacer, for spindle (next to cover plate)	2	41-G3L-H106	017516
Spacer, on rear wheel solid spindle, locating brake cover plate (fits in rear fork end)	1	41-G3L-B54	017324
Spacer, rear solid spindle (for speedometer gearbox)	1	41-G3L-H26-S	017038
Washer, for solid spindle	2	STD-9	000009