

THE
BROOKS

REGISTERED TRADE MARK

BOOK

of
Saddles
Bags, &c.

for

Cycles and
Motor Cycles

1916

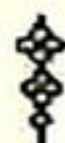
THE BROOKS

(Registered Trade Mark)

BOOK *of* Cycle and Motor Cycle Saddles and Bags for 1916



Thirty-second year of publication



Telephone : (Six Lines) Central 3670
Telegrams : "Brooks, Birmingham"

J. B. BROOKS & Co. Ltd.
Great Charles St., Birmingham

ESTABLISHED 1866

Contractors to H.M. Government,
The Admiralty,
War Office, India Office, Post Office and
Colonial and Foreign Governments
etc., etc.

GOVERNMENT CONTROLLED WORKS

The BROOKS Policy

The BROOKS Policy is, and has been since the firm was founded in 1866, "Quality first."

Naturally, in supplying the wants of a huge public, it is necessary to eliminate needless expense, but cost is always the consideration to be dealt with last by BROOKS. They decline to produce anything but what they are absolutely satisfied will honestly fulfil the requirements of the buyer.

In making BROOKS Saddles for Cycles and Motor Cycles, experience is vitally necessary. Lack of experience in a maker means far too much of experimenting for the unfortunate user.

BROOKS experience in saddle making goes right back to the beginning—back to the period of solid tyres—and is unequalled by that of any other house in the world.

It is this long and wide experience, coupled with the unalterable determination to offer the public only the finest quality, that has placed BROOKS in the position of being by far the largest and most successful firm of saddle makers in existence.

Size, Height, and Weight of BROOKS Saddles

The size, weight and height of every seat and saddle listed is given in this catalogue and the information will often be found useful.

The dimensions are merely the overall length and breadth and do not necessarily represent the exact amount of seat room available.

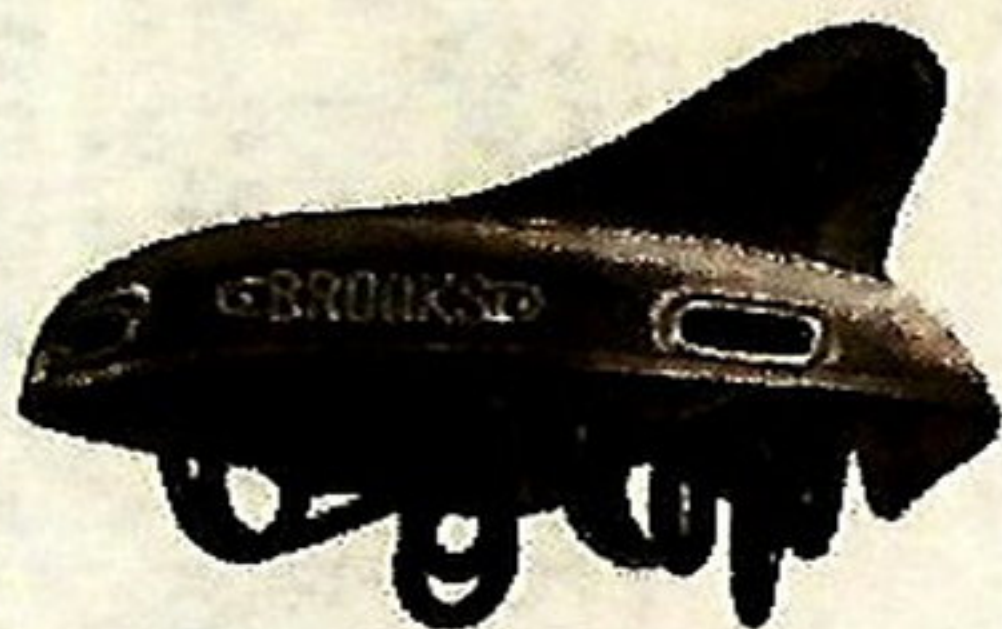
The weight may vary slightly owing to differences in thickness of the leather used.

The height given is in each case the distance from the centre of the saddle clip bolt to the top surface of the saddle.

Naturally, it does not represent the height of the saddle above the L pin, as this will vary according to whether the clip is turned up or down.

BROOKS

"Champion" Model Racing Saddles



Showing cambered weight-bearing portion
of "Champion" Saddles.

The distinguishing feature of the BROOKS "Champion" racing saddles is the cambered or domed back, produced by using a curved cantle plate ; the illustrations, on this and the next page show this feature very clearly.

This cambering of the weight-bearing part of the saddle, in combination with the fine and narrow peak, gives a degree of comfort and freedom of movement most valuable to the racing man, and at the present time the great majority of speed-men all over the world use BROOKS "Champion" racing saddles.

An important point in the construction of BROOKS saddles is the use of solid copper rivets, which never work loose.

BROOKS

"Champion" Model Racing Saddles

"Champion" saddles are made in four models,
viz : B 10 C, B 17 C, B 19 C, and B 20 C.



Top view of "Champion" Saddle.

B 10 C is a saddle made up of the B 19 C top on four-wire frame, as shown at the bottom of page 5.

B 17 C is the B 17 C top on two-wire frame, as shown at top of page 6.

B 19 C is the B19 top on a framing similar to that shown at top of page 6, but of larger size.

B 20 C is the B 17 top on a framing as shown at top of page 5, which provides a front spring.

B20
Path Saddle
Champion Model

MADE IN GENTLEMAN'S
MODEL ONLY.

Size 11in. x 7in.
Weight 11lb. 9oz. Height 2 1/2in.



PRICE—Enamel, 11 3/4 Nickel, 12 6/8

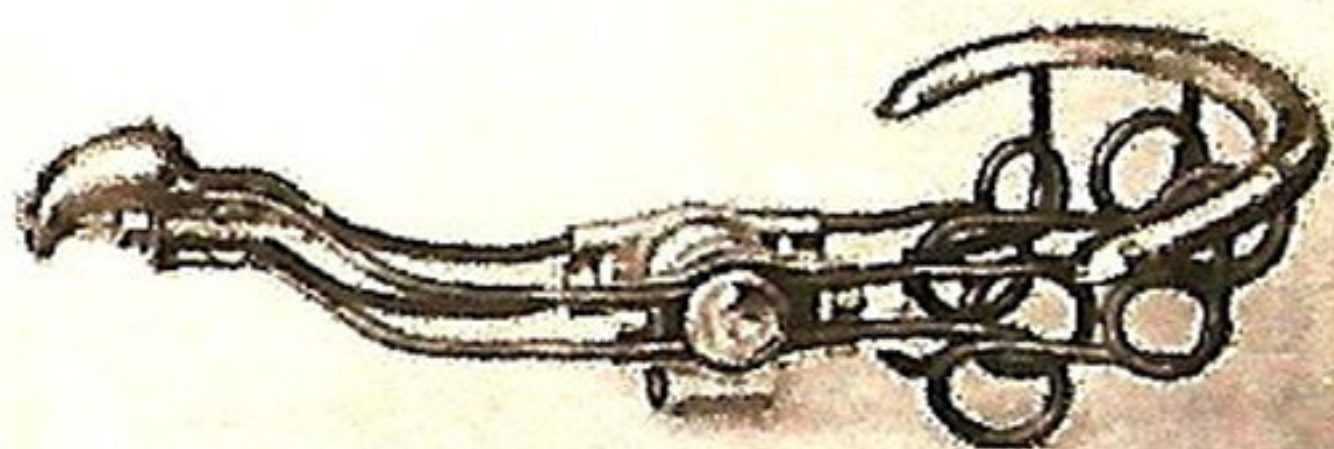
Above is illustrated the framing fitted to this model, the special feature being the extra resiliency afforded by the coils at front.

The top is as B 17 C.

B10
Path Saddle
Champion Model

MADE IN GENTLEMAN'S
MODEL ONLY

Size 12 1/2 x 7in.
Weight 11lb. 13oz. Height 2in.



PRICE—Enamel, 13 9/16 Nickel, 15 6/8

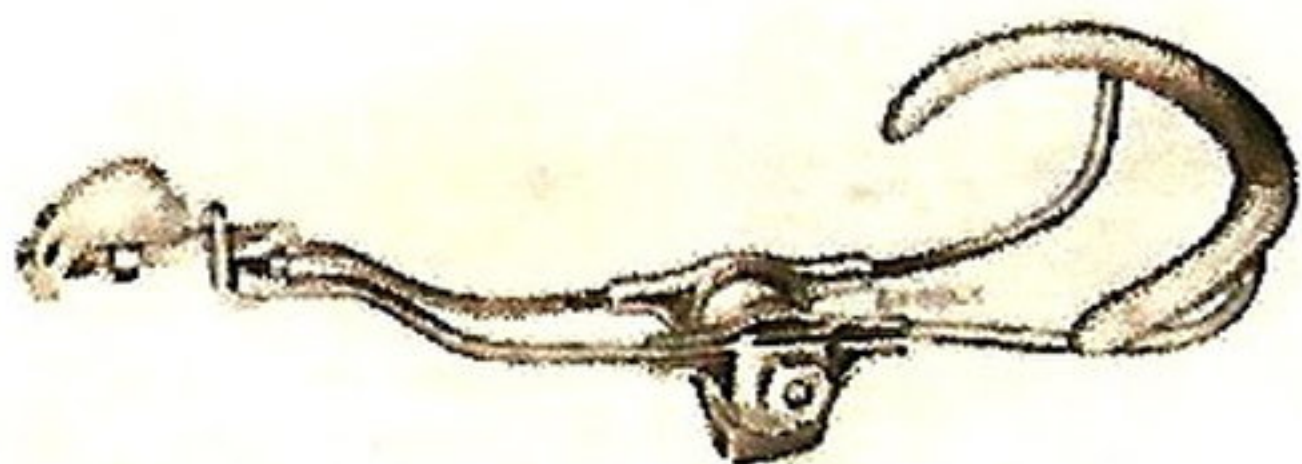
This model is built on similar lines to B 19, illustrated on page 6, but differs in the underframing, which is of the well-known B 10 type, as shown in our illustration. This framing has enjoyed an immense popularity for many years, both for the road and for path riders who prefer a saddle with moderate resiliency.

B17C
Path Saddle
 Champion Model

MADE IN GENTLEMAN'S
 MODEL ONLY.

Size 11in. x 7in.

Weight 1lb 8 $\frac{1}{2}$ oz. Height 2 $\frac{1}{2}$ in.



PRICE—Enamel, 10/9 Nickel, 12/-

The above illustration shows the framing that is fitted to this model, a framing which has been specially designed to meet the exacting requirements of the path rider.

B19
Path Saddle
 Champion Model

MADE IN GENTLEMAN'S
 MODEL ONLY.

Size 12 $\frac{1}{2}$ in. x 7in.

Weight 1lb 14oz. Height 2 $\frac{1}{2}$ in.



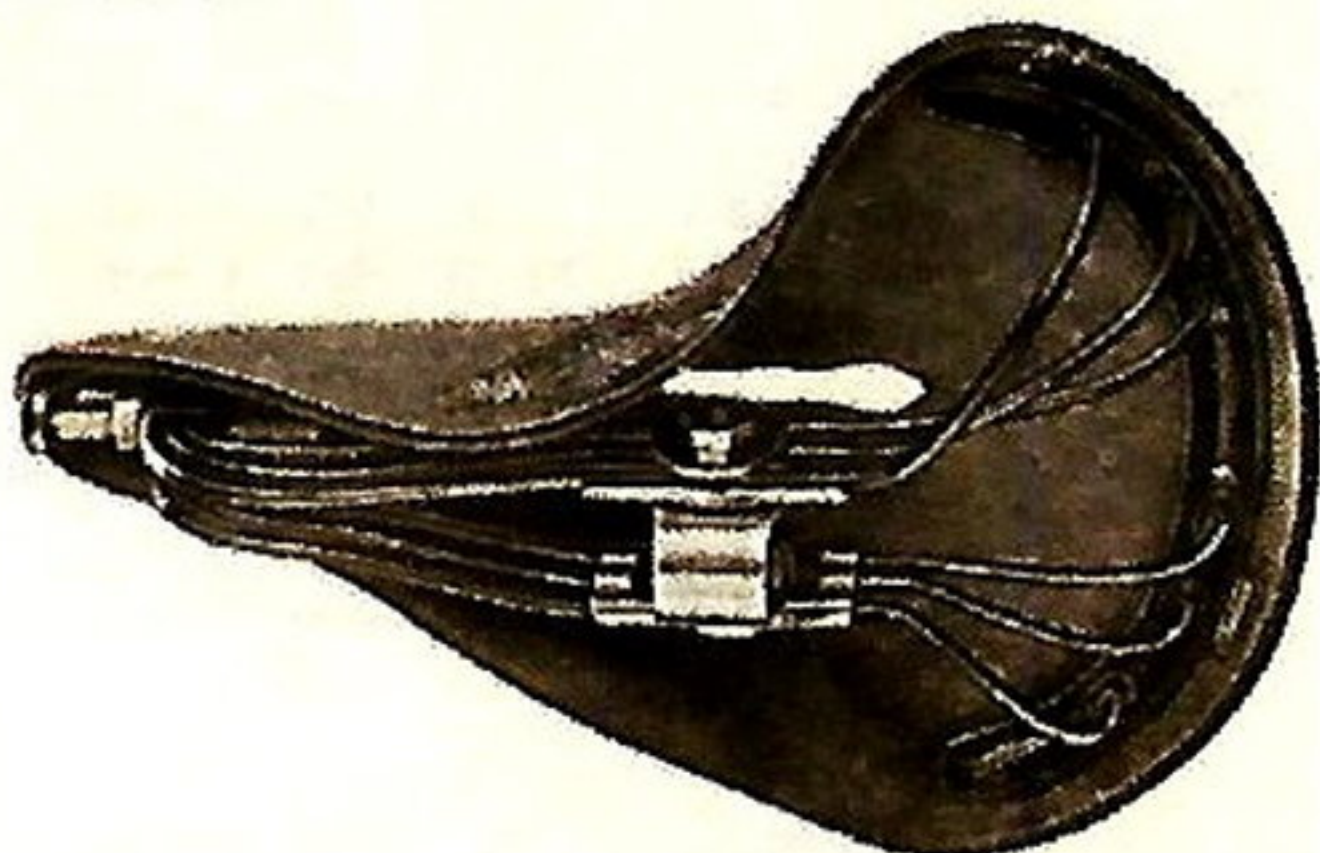
PRICE—Enamel, 13/- Nickel, 14/6

This model is designed essentially for path work. Its special features are similar to those embodied in B 17 C, but it is slightly longer than that model, as will be seen by the measurements given above. It has earned the approval of a large number of the leading path riders and is extensively used by them, its popularity being particularly marked among the most prominent French speed-men. By its use, that perfectly free action of the limbs so necessary to the racing man is assured, as also is an entire immunity from chafing.

B11
Path Saddle
(Patent)

MADE IN GENTLEMAN'S
 MODEL ONLY.

Size 10 $\frac{1}{2}$ in. \times 8 $\frac{1}{2}$ in.
 Weight 1lb. 10oz. Height 2in.



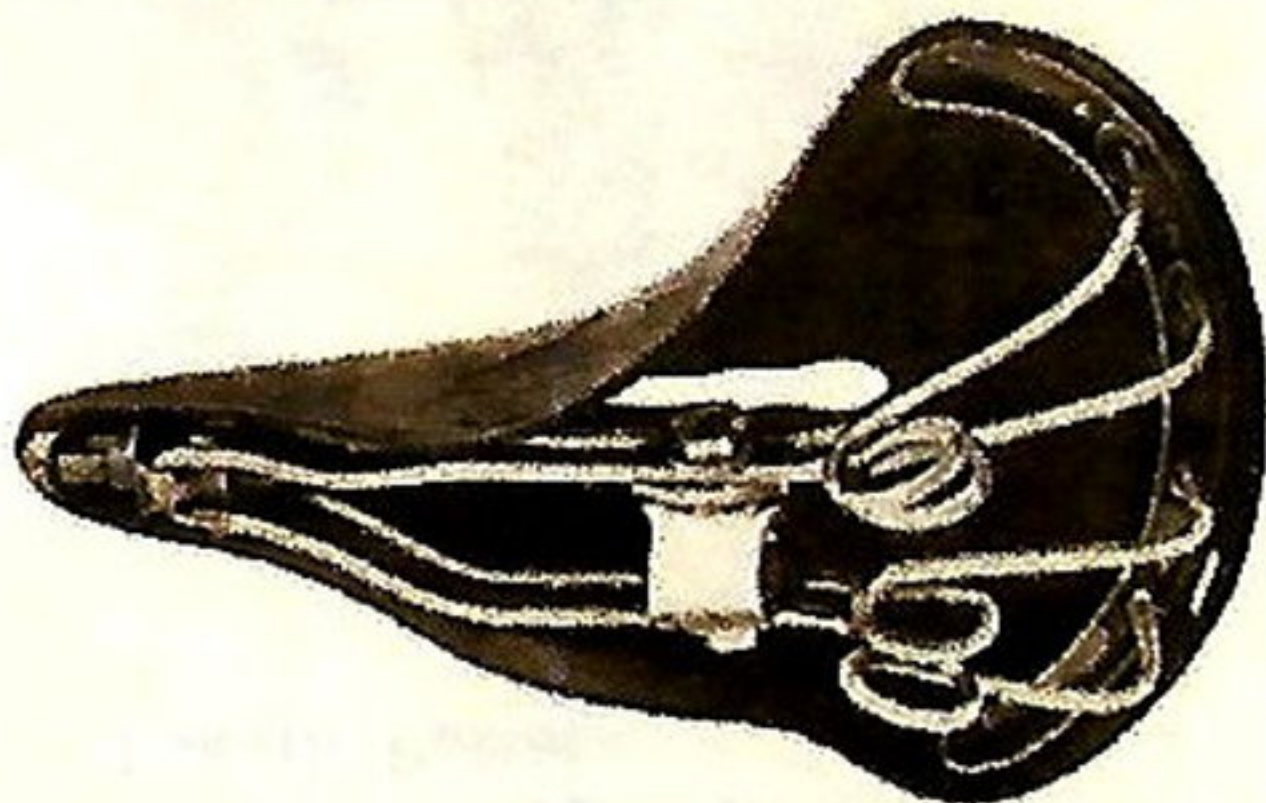
PRICE—Enamel, 12/- Nickel, 13/9

This model combines lightness and strength with some slight spring and resiliency, and the wires of the patent six-wire framing, spreading outwardly at the back, give an even support to the seat, and so strengthen the frame against side-thrust as to ensure perfect freedom from sagging.

B18 and B18L
Light
Road Saddle

FOR GENTLEMEN.
 Size 10 $\frac{1}{2}$ in. \times 9 $\frac{1}{2}$ in.
 Weight 1lb. 10oz. Height 2in.

FOR LADIES.
 Size 9 $\frac{1}{2}$ in. \times 8in.
 Weight 1lb. 7oz. Height 2in



PRICE—Enamel, 8/6 Nickel, 9/9

B 18 is light and simple in construction. It is fitted with the BROOKS four-wire framing, and is of selected materials throughout.

B 18 L (for ladies) is on similar lines.

B 17 Light Road Saddle

MADE IN GENTLEMAN'S
MODEL ONLY.

Size 10 1/2 in. x 8 1/2 in.

Weight 11 lb. 8 oz. Height 2 1/2 in.



PRICE Enamel, 9 - Nickel, 10/6

The popularity of this model has been long sustained—it is light and neat, fitted with single-wire frame, and for the racing man, who desires a firm and practically springless seat, is an ideal saddle.

The top is carefully shaped and the materials throughout are of the best quality.

B 10 and B 10 L Light Road Saddle

FOR GENTLEMEN.

Size 1 - Size 10 1/2 in. x 8 1/2 in.

Weight 11 lb. 11 oz. Height 1 1/2 in.

Size 2 - Size 11 1/2 in. x 9 1/2 in.

Weight 20 lb. 10 oz. Height 2 in.

FOR LADIES.

Size 1 only - Size 9 1/2 in. x 8 1/2 in.

Weight 11 lb. 9 oz. Height 2 in.



PRICE (Size 1) Enamel, 10/6 Nickel, 12/3
(Size 2) " 14/3 " 16/-

Of all light road saddles, none has enjoyed such popularity as the world-famed BROOKS B 10.

It embodies the BROOKS four-wire framing, the wires of which spread outwardly at the back, and by their position strengthen the frame against side-thrust, and evenly support the seat, thus ensuring an absolute freedom from sagging.

It is undoubtedly the most comfortable light road saddle made, and in both models, B 10 and B 10 L (for ladies) will be found to combine durability and perfect ease.

B 84 and B 84 L Road Saddle

FOR GENTLEMEN.
Size 10½ in. x 8½ in.
Weight 2½ lb. 0 oz. Height 1½ in.
FOR LADIES.
Size 9½ in. x 8½ in.
Weight 2½ lb. Height 1½ in.
Registered Design No. 533350.



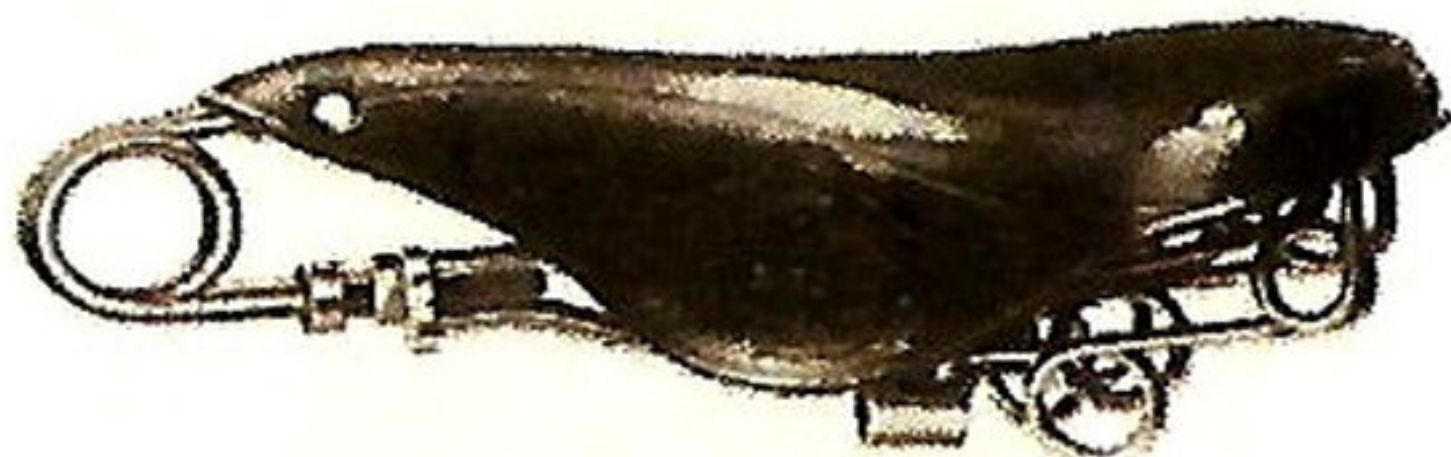
PRICE—Enamel, 13/9 Nickel, 15/6

Specially designed for the rider who prefers a low-built seat and at the same time desires greater resiliency than is usual in a very low saddle.

B 84 L possesses all the advantages of B 84.

B 32 Light Road Saddle (Patent)

MADE IN GENTLEMAN'S
MODEL ONLY.
Size 10½ in. x 8½ in.
Weight 2½ lb 4oz. Height 2½ in.

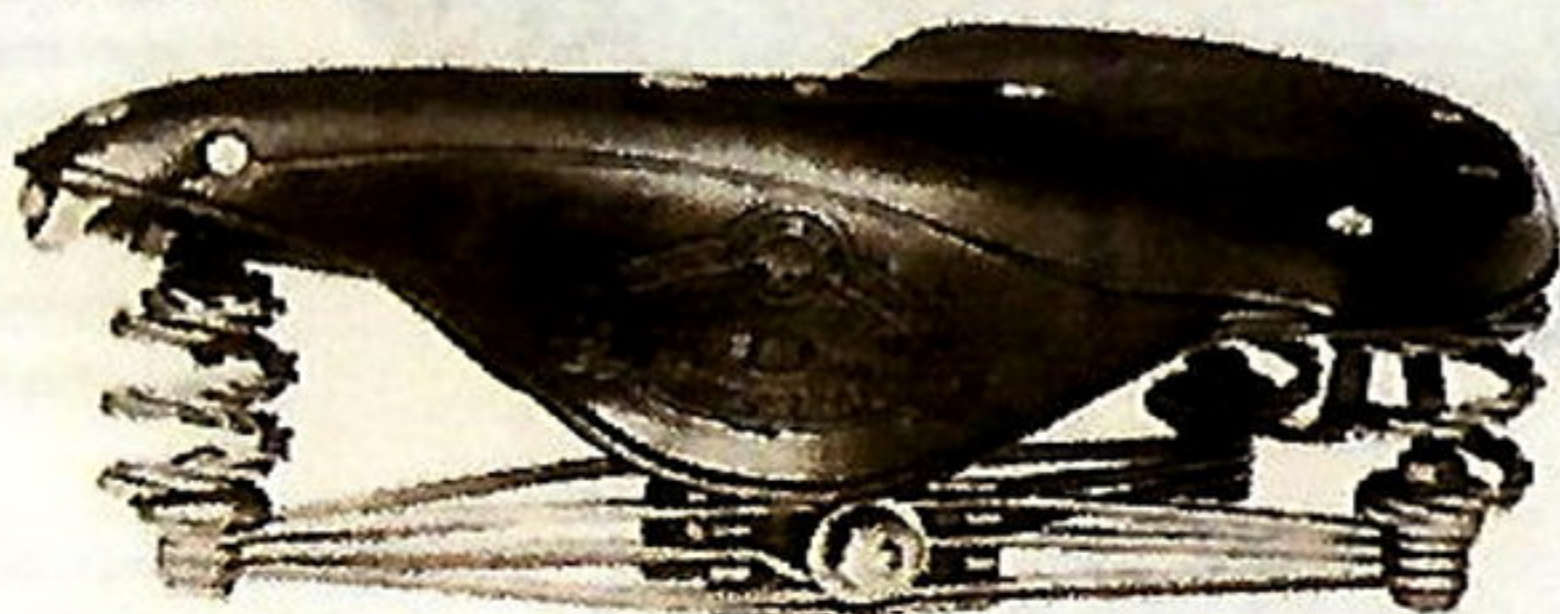


PRICE—Enamel, 14/3 Nickel, 16/-

The framing in this model is the well-known BROOKS four-wire type, as fitted to B 10, with the addition of a front loop coil spring. This latter ensures somewhat more elasticity than in the models not so fitted, and makes a comfortable and easy saddle for general riding. At the same time much of the firmness and neatness so much appreciated in B 10 model are retained.

B 85 and B 85L Road Saddle (Patent)

FOR GENTLEMEN.
Size 10 $\frac{1}{2}$ in. \times 8 $\frac{1}{2}$ in.
Weight 2 $\frac{1}{2}$ lb. 11 oz. Height 3 $\frac{1}{2}$ in.
FOR LADIES.
Size 9 $\frac{1}{2}$ in. \times 8 $\frac{1}{2}$ in.
Weight 2 $\frac{1}{2}$ lb. 8 oz. Height 3 $\frac{1}{2}$ in.



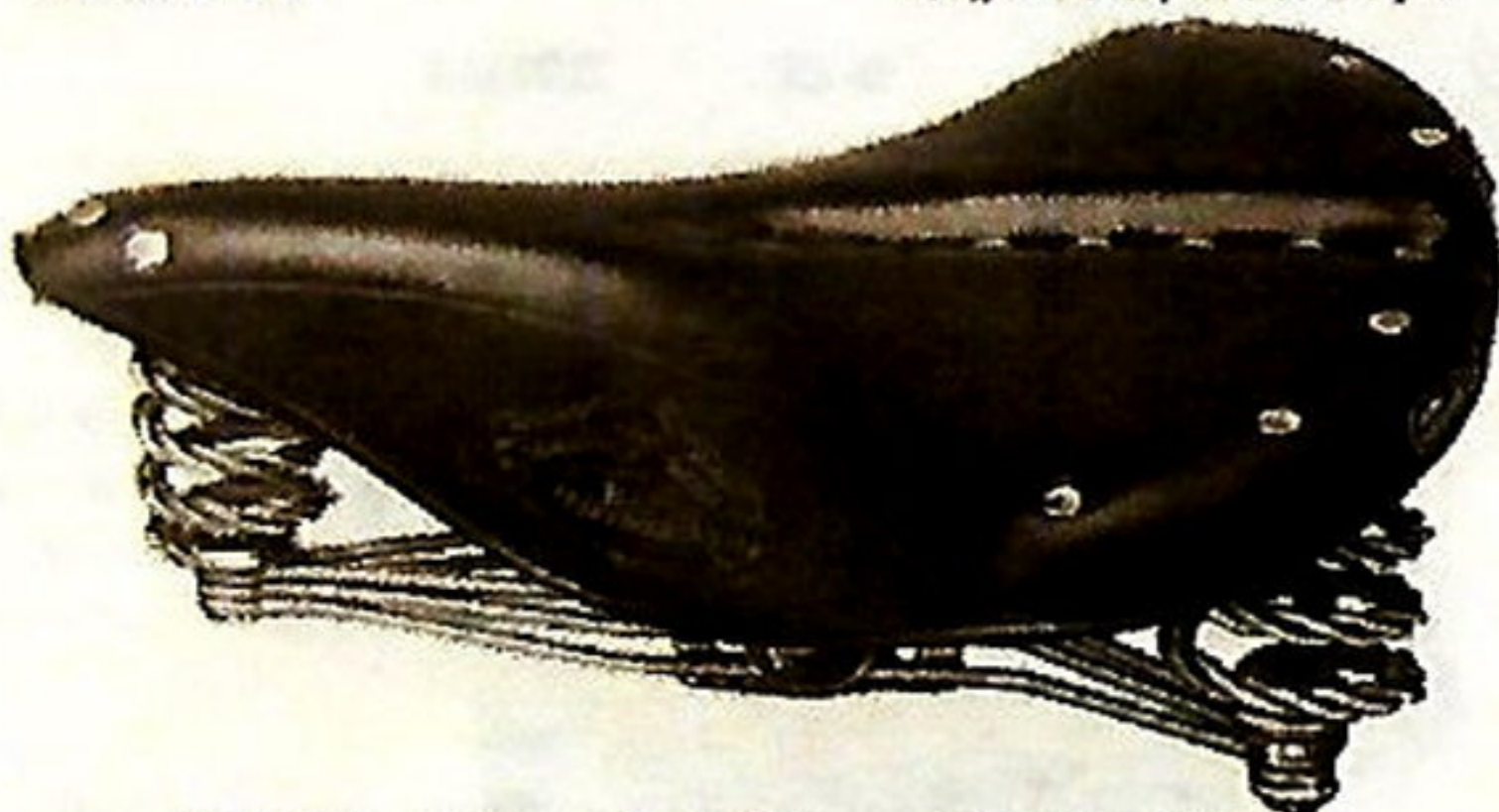
PRICE—Enamel, 14/3 Nickel, 16/6

A saddle of graceful design, fitted with a superfine leather top carefully blocked to shape and embodying the BROOKS stranded-wire spiral springs, and patent six-wire bracket.

B 85 L is similarly designed and is an ideal saddle for ladies.

B 40 and B 40 L Road Saddle (Patent)

FOR GENTLEMEN.
Size 11 in. \times 9 $\frac{1}{2}$ in.
Weight 3 $\frac{1}{2}$ lb. 1 oz.
Height (to top surface) 3 $\frac{1}{2}$ in.
FOR LADIES.
Size 10 in. \times 9 $\frac{1}{2}$ in.
Weight 3 $\frac{1}{2}$ lb.
Height (to top surface) 3 $\frac{1}{2}$ in.



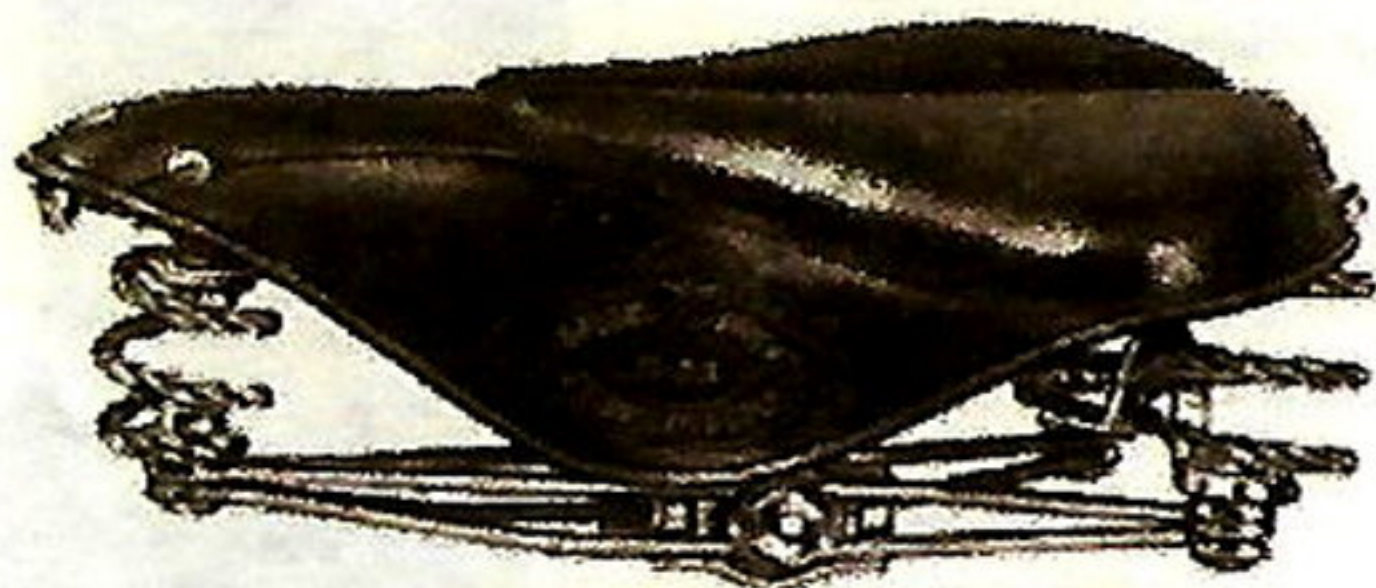
PRICE—Enamel, 18/6 Nickel, 20/9

The special construction of this saddle entirely obviates the possibility of injurious pressure. It has an under-support of stout leather which takes the whole of the tension, and upon the seat portion of this is placed felt padding. The whole is then covered with very pliable leather of superfine quality, and owing to the padding not being continued into the peak, there is a space between the under-leather and the pliable upper leather, which makes the saddle soft and yielding in its narrow portion and prevents any tendency to widen.

B 40 L is on similar lines.

B 33 and B 33 L Road Saddle

FOR GENTLEMEN.
Size 10 1/2 in. x 8 1/2 in.
Weight 21b. 11oz.
Height (to top surface) 3 1/2 in.
FOR LADIES.
Size 9 1/2 in. x 8 1/2 in.
Weight 21b. 9oz.
Height (to top surface) 3 1/2 in.



PRICE Enamel, 14/6 Nickel, 16/6

B 33 has a top of superior quality leather, carefully formed and fitted with soft leather pads comfortably cushioned.

B 33 L is a similar saddle but suitably modified for ladies' use.

B 36/2 and B 36/2L Road Saddle

FOR GENTLEMEN.
Size 2 . Size 11 1/2 in. x 9 in.
Weight 31b. 2oz.
Height (to top surface) 3 1/2 in.
FOR LADIES.
Size 2 . Size 10 1/2 in. x 9 in.
Weight 21b. 14oz.
Height (to top surface) 3 1/2 in.



PRICE (Size 2) Enamel, 20/- Nickel, 22/-

Both B 36 and B 36 L for ladies, provide a luxurious seat, the whole being well cushioned over a stout, strong and well shaped leather top.

B 28

Road Saddle (Patent)

MADE IN GENTLEMAN'S
MODEL ONLY.

Size 2	Size 10 1/2 in. x 8 1/2 in.
Weight 2 1/2 lb. 19 oz.	Height 2 1/2 in.
Size 3	Size 11 1/2 in. x 9 1/2 in.
Weight 3 lb.	Height 2 1/2 in.



PRICE—(Size 2) Enamel, 14/6 Nickel, 17/6
 (Size 3) .. 16/9 .. 19/6

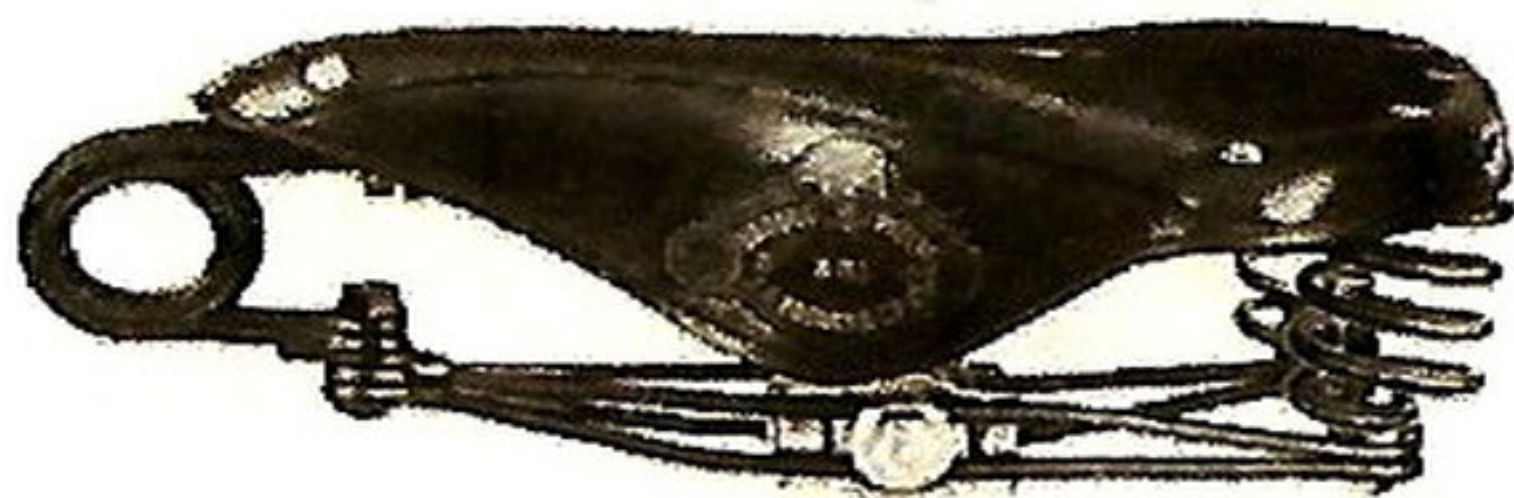
The design of this saddle includes the BROOKS rubber buffers which are incorporated in the springing arrangements. The tension screw is readily accessible, and the front loop-coil spring ensures the maximum of ease.

B 95

Road Saddle

MADE IN GENTLEMAN'S
MODEL ONLY.

Size 10 1/2 in. x 8 1/2 in.	Height, 3 1/2 in.
Weight 2 1/2 lb. 11 oz.	
Size 2	Size 11 1/2 in. x 9 1/2 in.
Weight 3 lb.	Height 3 1/2 in.



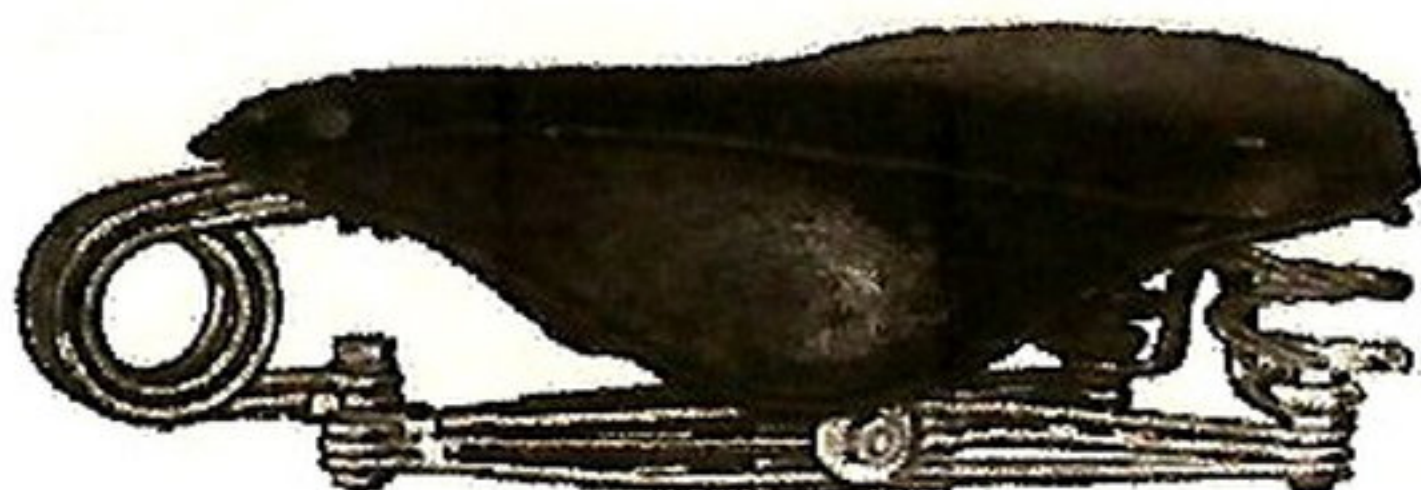
PRICE (Size 1) Enamel, 13/- Nickel, 15/-
 (Size 2) .. 13/9 .. 16/-

A saddle that yields to the weight of the rider along its entire length. The top is carefully blocked and will keep its shape under the severest wear.

B 90 Road Saddle (Patent)

MADE IN GENTLEMAN'S
MODEL ONLY

Size 1	Size 10 1/2 in. x 8 1/2 in.
Weight 3lb.	Height 3 1/2 in.
Size 2	Size 11 1/2 in. x 9 in.
Weight 3lb. 4oz.	Height 3 1/2 in.
Size 3	Size 12 1/2 in. x 9 1/2 in.
Weight 4lb.	Height 3 1/2 in.



PRICE—(Size 1) Enamel, 15/6	Nickel, 18/9
(Size 2) „ 16/6	„ 19/9
(Size 3) „ 17/6	„ 20/9

A most comfortable and handsome saddle. It is made of the finest selected leather, fitted with the BROOKS stranded-wire spiral springs, laminar front spring, and patent six-wire bracket, and is without doubt one of the most popular road saddles made.

Size 3 can be made in special strengths to order, to suit any weight up to 18 stone, Price 1/- extra.

The "Release" Hammock Saddle

MADE IN GENTLEMAN'S
MODEL ONLY

Size 11 1/2 in. x 9 in.	Height 4 in.
Weight 3lb. 6oz.	



PRICE—Enamel, 16/6	Nickel, 19/9
(without tool bag).	

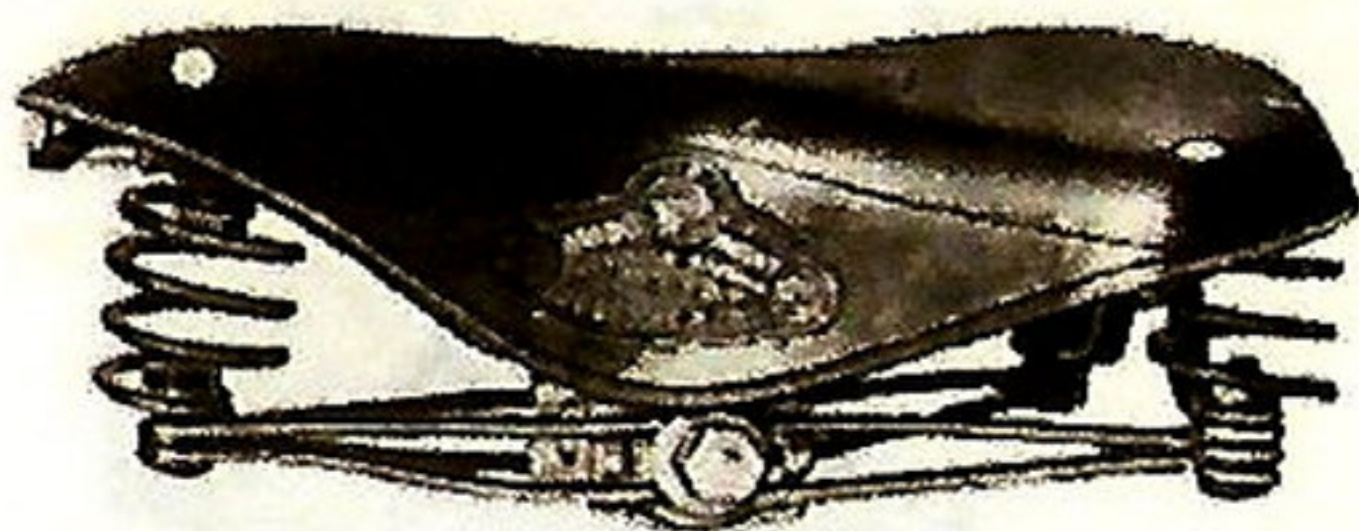
If complete with tool bag shown on page 18

PRICE—Enamel, 21/6	Nickel, 24/9
--------------------	--------------

A well-sprung comfortable saddle of the hammock type. The large springs extended rearwards give an exceptionally smooth action. A special feature of this saddle is the ease with which the tension can be adjusted when required.

B 94 Juvenile Light Road Saddle

For BOYS.	For GIRLS.
Size 9½ in. x 7½ in.	8½ in. x 7½ in.
Weight 2½ lb.	1½ lb. 13 oz.
Height 3 in.	3 in.



B 94 for girls is suitably modified.

PRICE—Enamel, 9/6 Nickel, 11/-

The construction of a saddle for juveniles requires the greatest care. It must be well made of the best materials so as to yield the maximum of comfort and durability.

In the construction of this model these essentials have been carefully considered, and there is no more suitable saddle for either boy or girl than the BROOKS B 94.

B 25 Juvenile Light Road Saddle

For BOYS.	For GIRLS.
Size 9½ in. x 7½ in.	8½ in. x 7½ in.
Weight 1½ lb. 6 oz.	1½ lb. 2 oz.
Height 1½ in.	1½ in.



PRICE—Enamel, 7/6 Nickel, 8/6

This is a neat, small and very durable saddle, specially designed for either boy or girl. The BROOKS four-wire spring framing is employed in its construction, and the top is so shaped as to ensure the maximum amount of comfort. Undoubtedly this saddle is as near perfection as it is possible for skill and experience to make it.

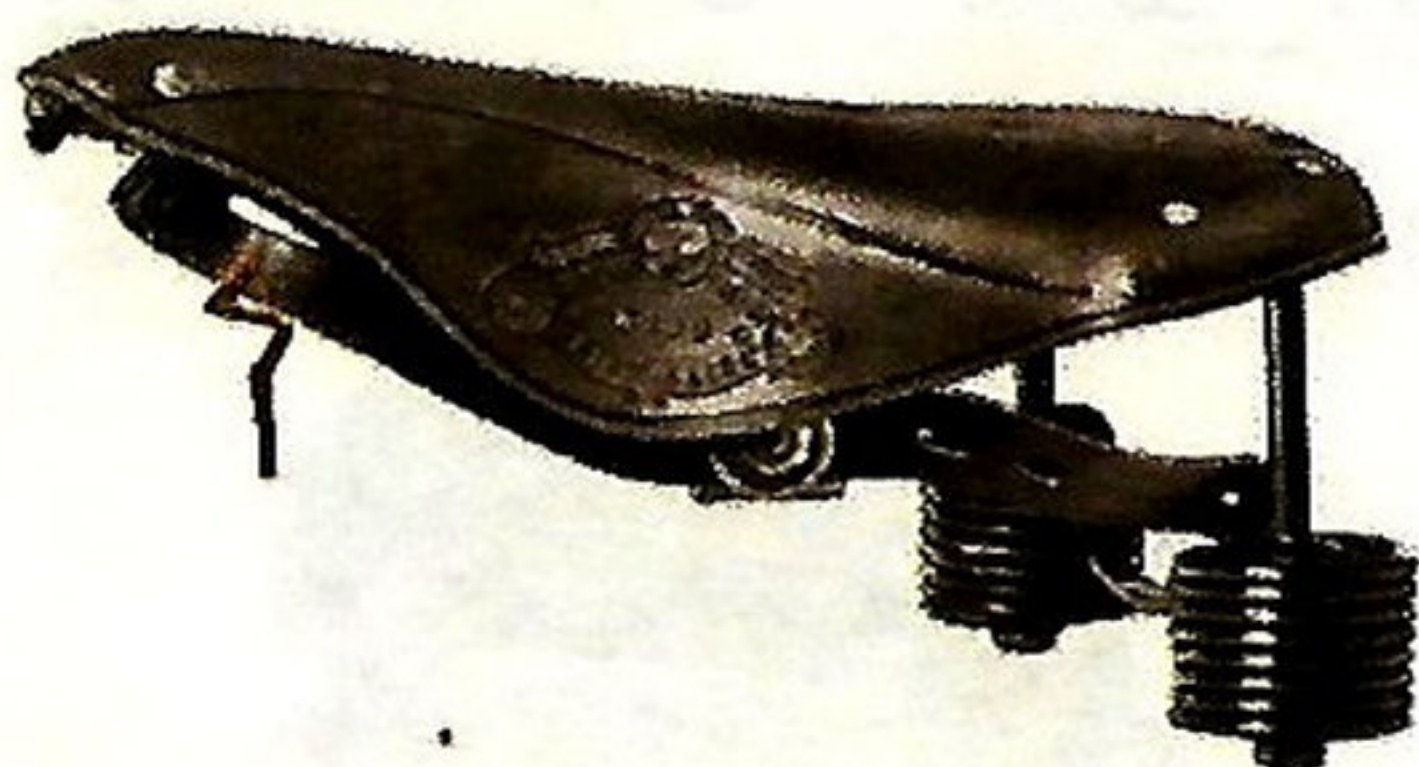
B 130
Patent Cycle
Saddle

MADE IN GENTLEMAN'S
MODEL ONLY

PLAIN TOP.

Size 15½in. x 9½in

Weight 4lb. 7oz. Height 2in



PRICE—B 130

Plain Top—Enamel, 19/3

Nickel, 23/9

Fitted with **BROOKS** Patent Compound Springs, which give a smoothness and sensitiveness of action unequalled by any other system, as well as effectively checking rebound on bad roads. The leather is the finest selected, and materials and workmanship throughout are up to the **BROOKS** standard.

B 2557 Tool Bag

Size 6in. x 4in. x 1 1/2in.



PRICE each 2/3

An oval bag of particularly neat appearance. It is made from good quality leather and has stiff ends.

B 941 Tool Bag

Size 6in. x 3in. x 1in.



PRICE each 1/6

This bag is listed at a moderate figure and is small and neat in design. It is made throughout of good hide.

B 7436 Challenge Tool Bag

Size 7in. x 3in. x 2in.



PRICE each 2/6

Has special features in that the strap for closing the bag encircles the tools inside and prevents rattling. Also the straps for attaching are buckled INSIDE the bag, making wrongful removal difficult. A thoroughly well-made bag.

B 7519 Tool Bag

Size 6in. x 3in. x 1 1/2in.



PRICE each 2/-

Made of stout leather with ring lock, as shown

B 7462 Tool Bag

Size 1 6in. x 3 1/2in. x 1 1/2in.
Size 2 6 1/2in. x 3 1/2in. x 1 1/2in.



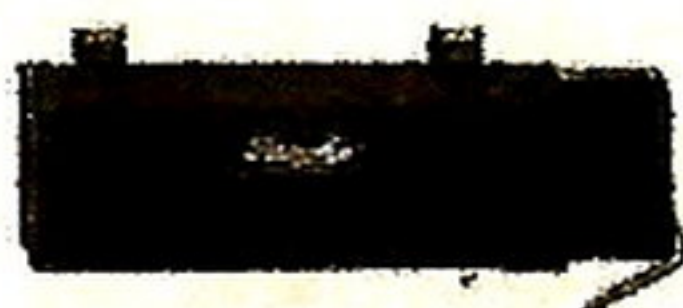
B 7462 (Size 1) 1/6

" (Size 2) 1/9

A soft gusseted bag, well made throughout of superior grained leather.

B 2767 Tool Bag

Size 6 1/2 in. x 3 in. x 1 1/2 in

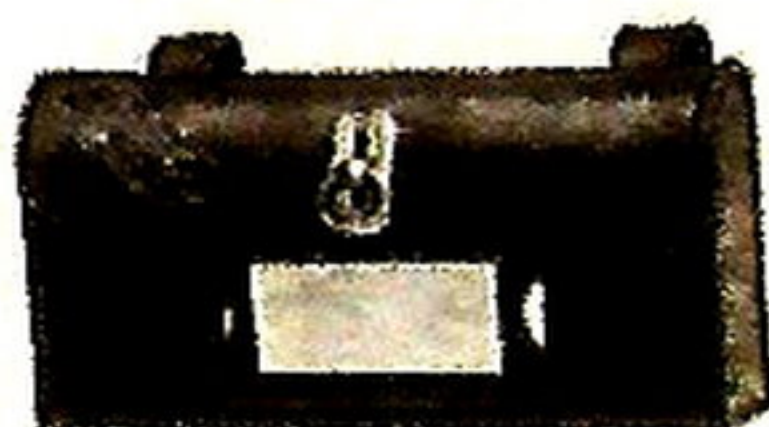


PRICE each 3/6

A D-shaped bag, thoroughly well made of best leather. The full length sliding pocket is pulled out by tab attached to one end, and this tab also secures the pocket in place by buttoning to a stud on the bottom of the bag.

B 7599 Tool Bag

Size 6 in. x 3 1/4 in. x 1 1/2 in

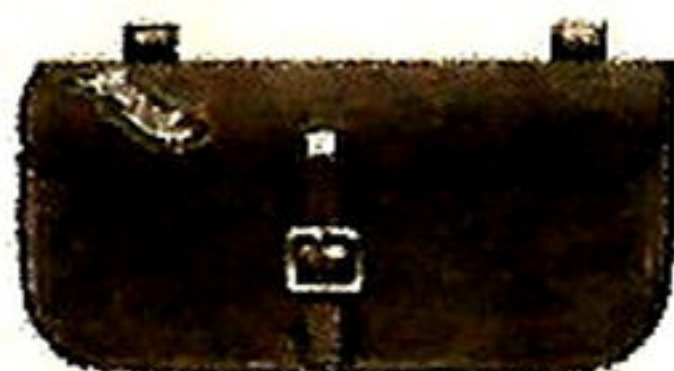


PRICE each 2/3

B 7599 is well made of best quality leather with best ring lock, and celluloid address pocket on front.

B 2501. Tool Bag

Size 6 1/2 in. x 3 1/2 in. x 1 1/2 in



PRICE each 1/8

B 2501 is a soft gusseted bag, well made throughout from superior leather

B 2769 Tool Bag

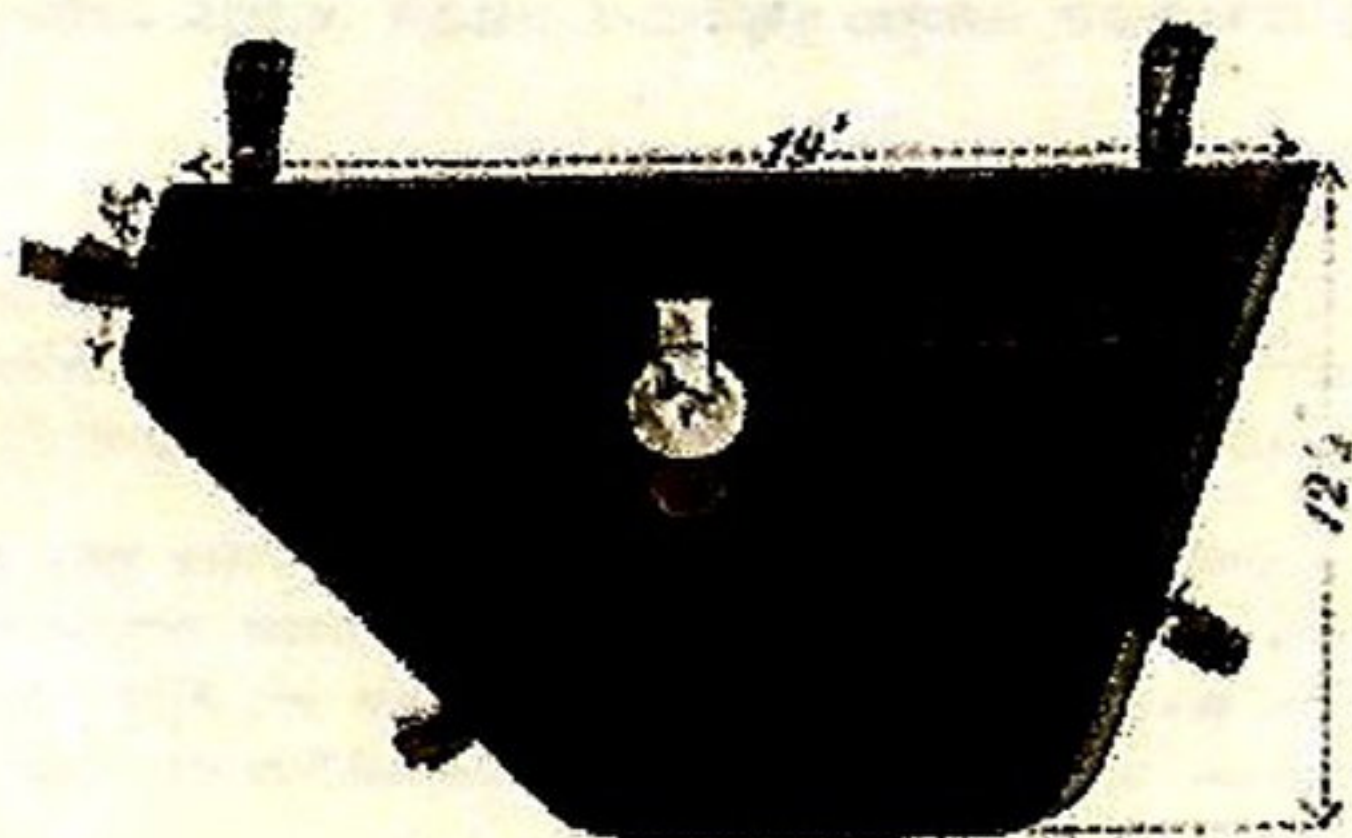
Size 6 1/2 in. x 2 1/2 in. diameter.



PRICE each 5/-

This is a good bag made of stout leather circular in shape, to fit inside rear springs of RELEASE saddle. It has a full-length inside case which pulls out.

Cycle Frame Bags



B 2038

This bag is of best waterproof canvas, in brown tan, or tweed, lined with cloth, all stiffened and fitted with rubber buffers to hold it clear of the top tube of cycle and so avoid fouling gear change levers, wires, etc. It is perfectly waterproof.

B 2036

B 2036 is similar in size and shape to B 2038 but has three straps instead of lock, and sides only stiffened, gussets being collapsible. Made of superior waterproof canvas in brown tan, or tweed, leather bound and fitted with rubber buffers to hold it clear of gear change levers, wires, etc., on top tube of cycle. Lined cambric throughout.

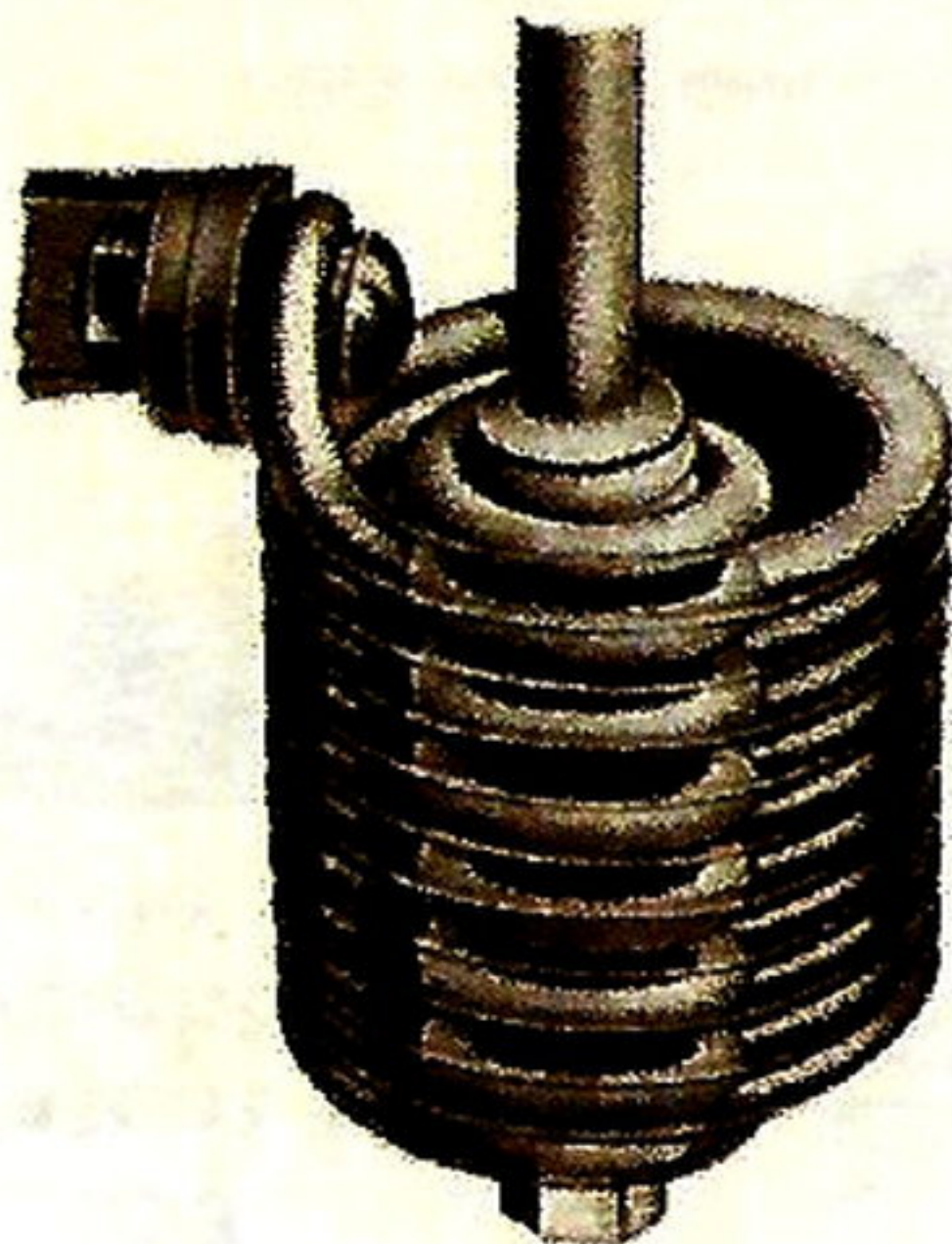
B 2034

B 2034 fastens with two straps and ring lock instead of three straps, and is made of cheaper quality canvas.

PRICES :

B 2038, with lock as illustrated	13/3
B 2036 with three straps instead of lock,	10/6
B 2034 with two straps and ring lock	7/9

The BROOKS Patent Compound Spring



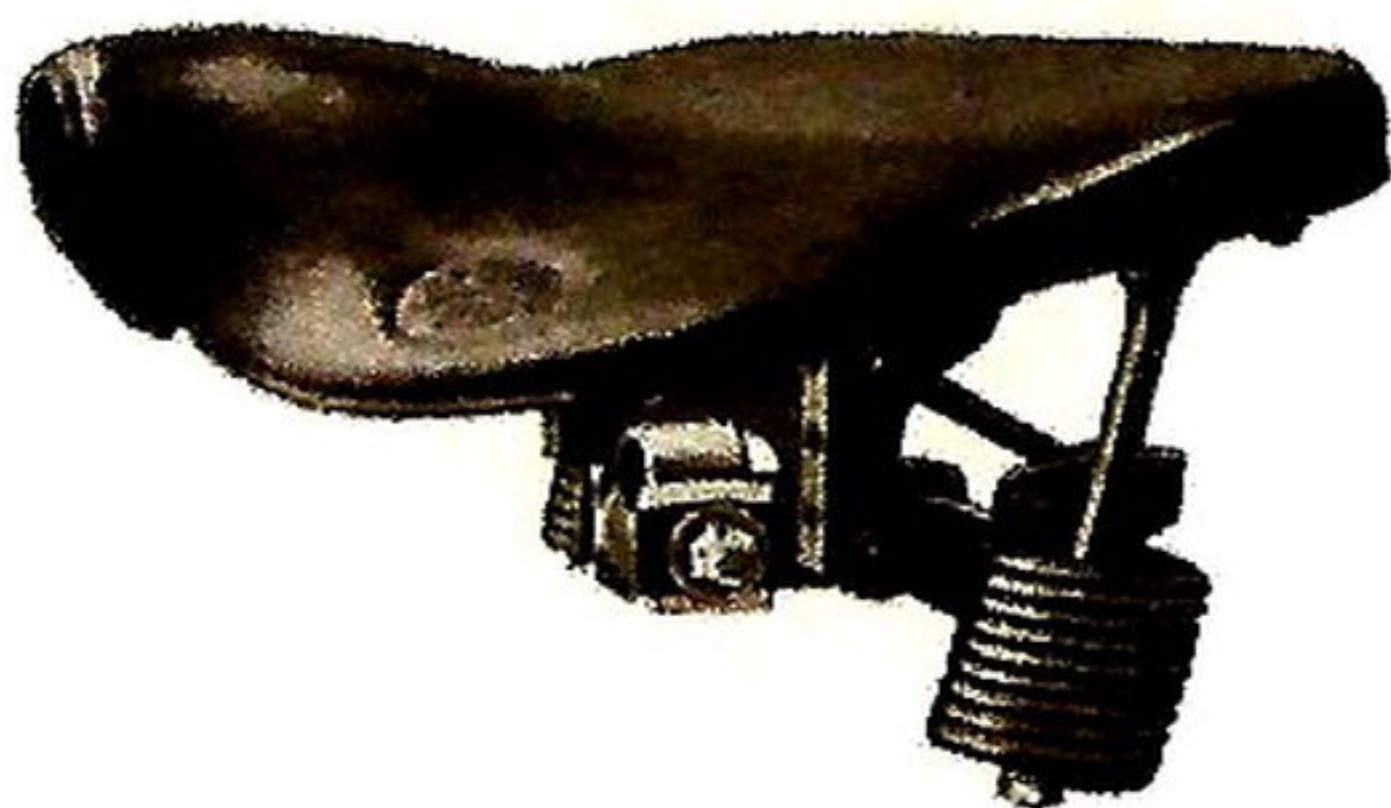
In absorbing a road shock the inner and outer coil springs act in unison, thus giving the sensation of unlimited elasticity for which BROOKS motor cycle saddles are so well known.

But the resulting "bounce" and slowly-dying oscillations which are inevitable in the case of the simple spring, do not occur with BROOKS compound spring, for the simple reason that the inner and outer springs each tries to bounce and joggle the rider at its own speed, and as these speeds are totally different, the one counteracts the other. BROOKS patent Compound Spring is the only form of saddle springing that ensures unlimited resiliency combined with the least possible shaking about of the rider.

B 500

Patent Motor Cycle Seat

Size 14in. wide x 13in. front to back. Weight 10lb. 10oz.
Height (to top surface of depression) 4½in.
Clearance between rear springs 11in.



PRICE (enamel finish only) 50/-

This is a saddle in which the movement of the seat portion is in a truly vertical plane, this effect being obtained by the use of parallel links.

The bearing surfaces in this link motion are very substantial, so that wear is reduced to a minimum.

An appreciative rider called this "The Pullman of Saddles" and there is no doubt that the combination of scientifically moulded and padded seat and the "deep" action of the **BROOKS** patent compound springs (see page 20) makes an extremely comfortable saddle.

Please state your weight when ordering as we make this saddle in several strengths.

B 400

Patent Motor Cycle Saddle

Size 12½ in. wide x 12½ in. front to back. Weight 9½ lbs.

Height (to top surface of depression) 4½ in.

Clearance between rear springs 8 in.



PRICE (enamel finish only) 40/-

This model is similar as regards springing and suspension to B 500 preceding; that is, its seat portion is carried on a substantial link system and insulated from shocks by the BROOKS patent compound springs (see page 20).

B 400 differs from B 500 in being of smaller and more compact size, but it possesses all the virtues of perfect shaping and padding and luxurious springing. Also it can be relied upon to yield long and continuous service without undue wear.

Please state your weight when ordering as we make this saddle in several strengths.

B 170

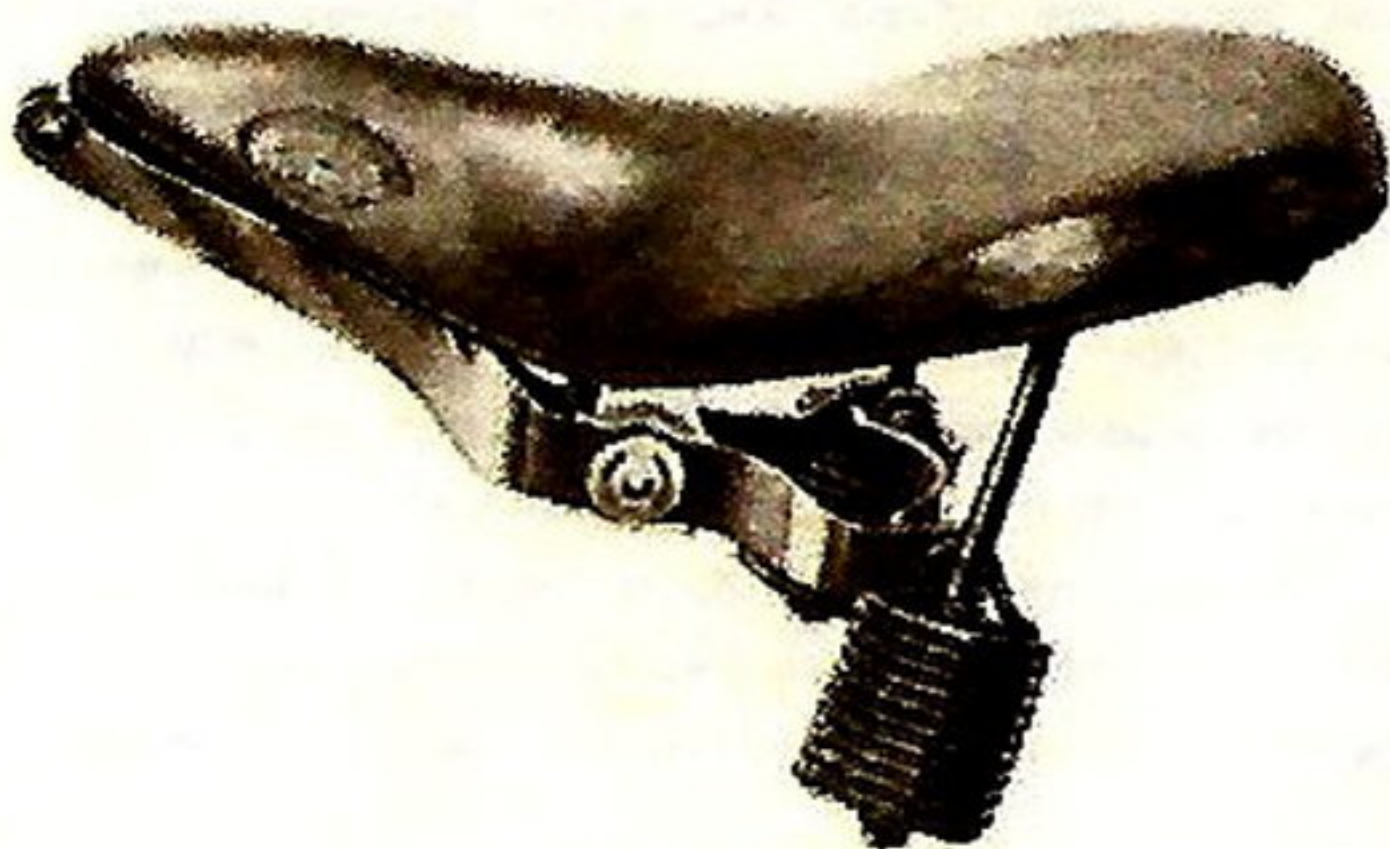
Patent Motor Cycle Saddle

Size 12in. wide x 13½in.
front to back.

Weight 8lb.

Height (to top surface of
depression) 3½in.

Clearance between rear
springs 3in.



B 170

PRICE (enamel finish only) 30/-

The peak of this saddle is anchored to the frame by a substantial pivot, and the weight-bearing portion is carried on BROOKS patent compound springs (see page 20).

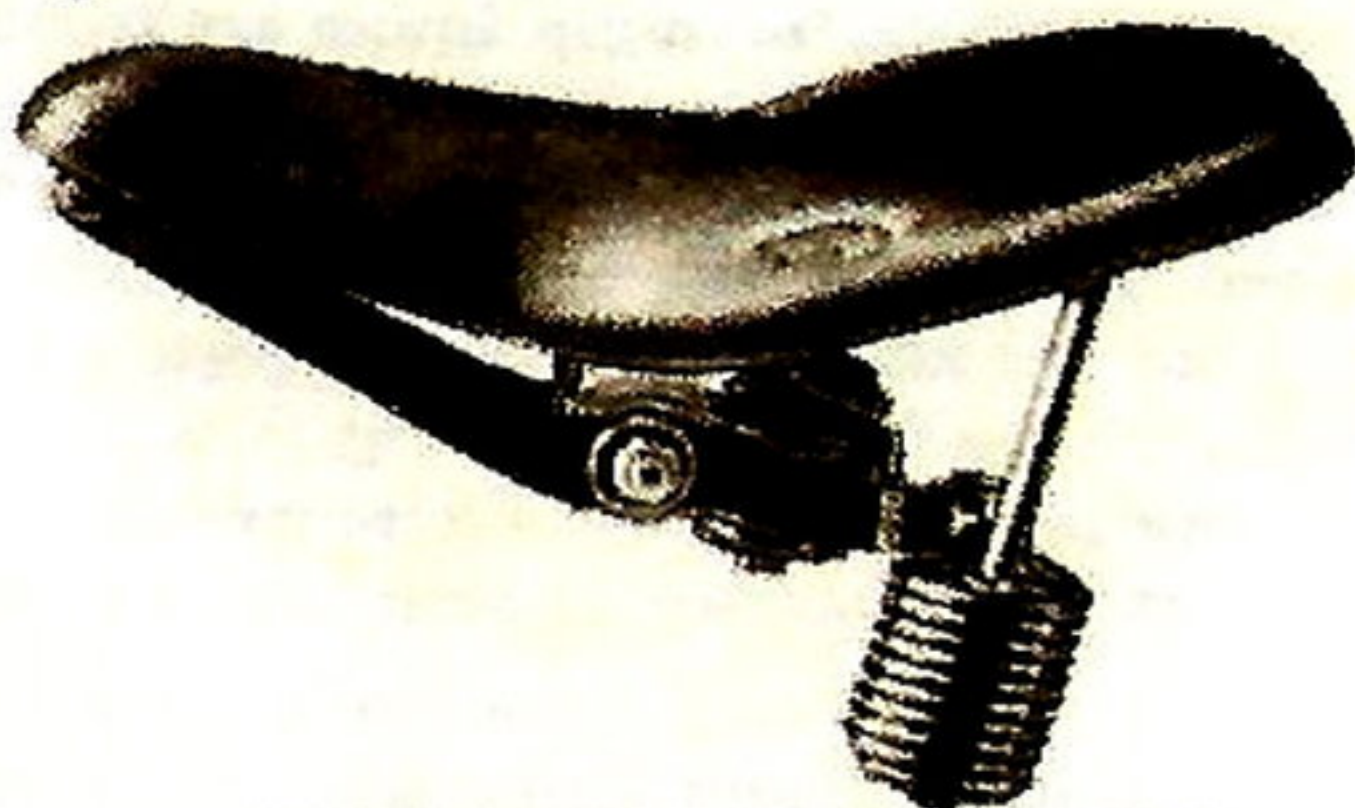
By this arrangement the peak of the saddle, where practically no weight is carried, has the least up-and-down movement, while the seat portion has the full benefit of the elasticity of the springs.

This saddle combines great steadiness with ample elasticity, and is without question the most popular motor cycle saddle ever produced.

Please state your weight when ordering as we make this saddle in several strengths.

B 150 Patent Light- weight Motor Cycle Saddle

Size 18½ in. wide x 12½ in. front
to back.
Weight 6lb.
Height (to top surface of
depression) 8½ in.
Clearance between springs 6½ in.

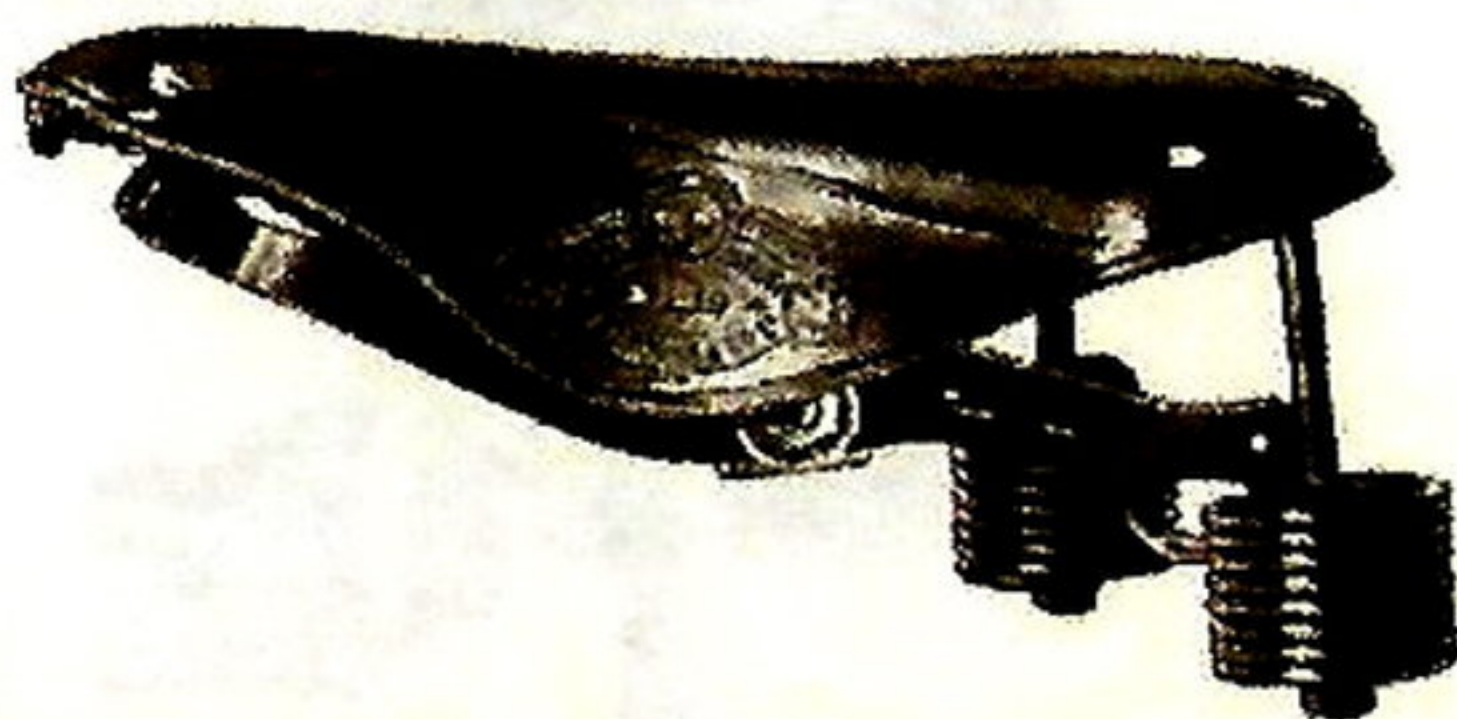


PRICE (enamel finish only), 22/6

A similar saddle to B 170 (shown on page 23), but rather smaller and lighter. A perfect saddle for light-weight motor cycles.

B 130/3 Patent Light- weight Motor Cycle Saddle

Size 18 in. wide x 12½ in. front
to back.
Weight 5lb.
Height 8½ in.
Clearance between springs 6½ in.



PRICE (enamel finish only) 20/6

A high-grade saddle of the suspension type, eminently suitable for light-weight motor cycles.

Please state your weight when ordering as we make both these saddles in several strengths.

B 220

Size 12½ in. wide x 14 in. front to back.

Weight 7lb. 8oz.

Height (to top surface of depression) 3 in.

B 210

Size 11 in. wide x 13 in. front to back.

Weight 6lb. 14oz.

Height (to top surface of depression) 3 in.

Patent Motor Cycle Saddles



B 220

PRICE (enamel finish only) 30/-

A saddle designed specially for speed and competition work.

The top is moulded and padded as B 170 and is carried on laminated springs.

The result is a very low and firm saddle which is, at the same time, most comfortably shaped and has ample elasticity for the purpose.

B 210

PRICE (enamel finish only) 28/6

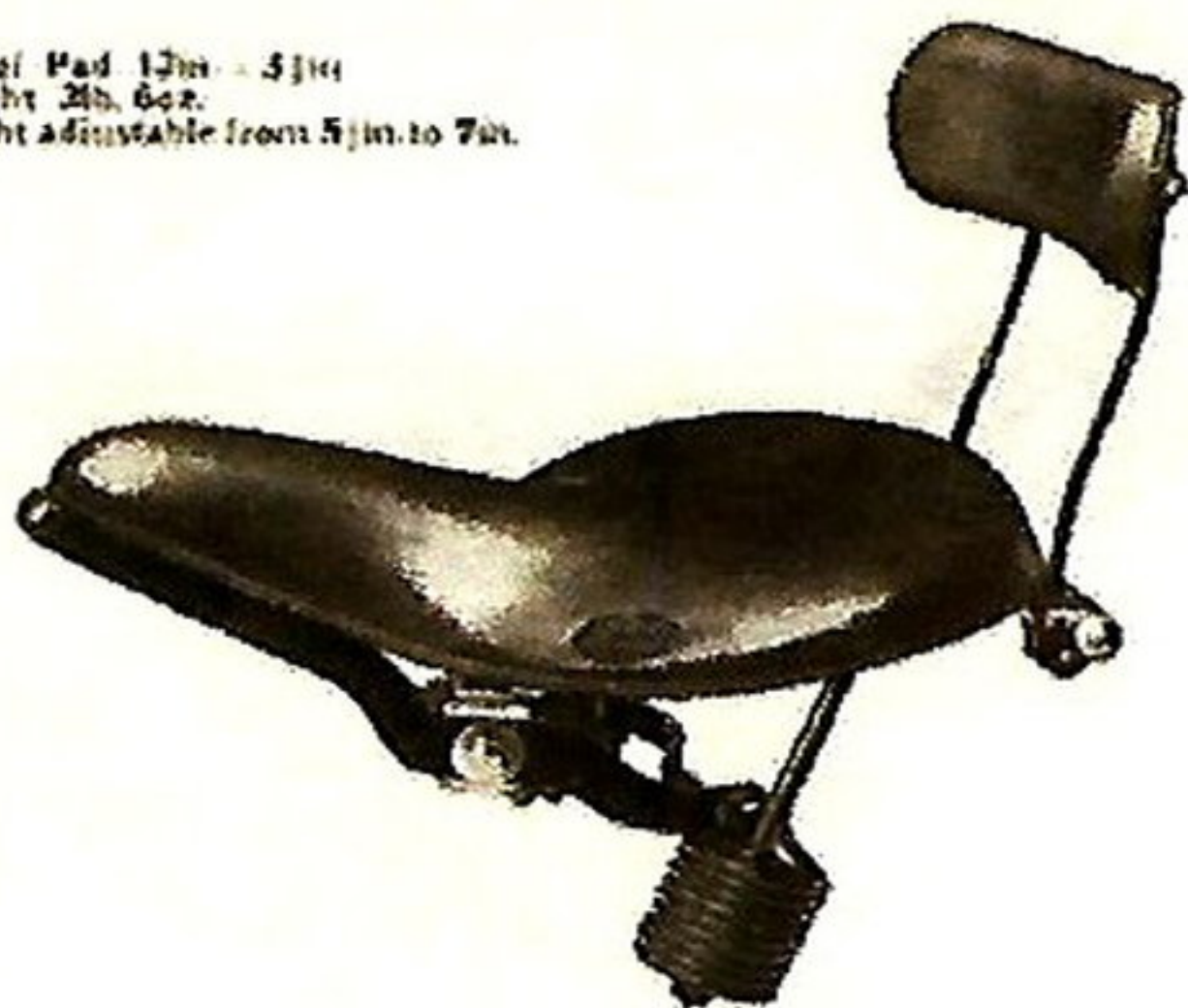
This model is on the same principle as the B 220, with the under-framing embodying our patent laminated springs, but the top and framing are slightly smaller and lighter. This model is most suitable for Tourist Trophy machines, for which it has been especially constructed.

Please state your weight when ordering as we make these saddles in several strengths.

B 1038

Patent Adjustable Motor Cycle Back Rests

Size of Pad 12in. x 5 1/2in.
Weight 2lb. 6oz.
Height adjustable from 5 1/2in. to 7in.



PRICES.

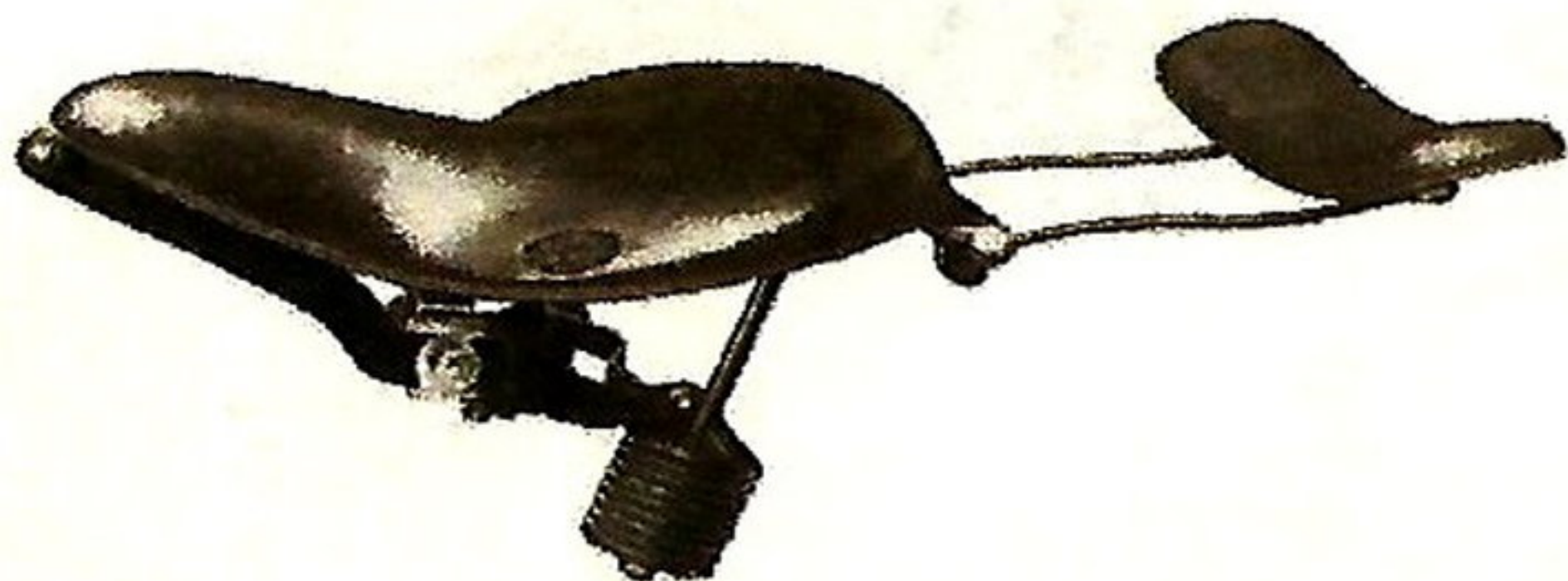
(Enamel finish only.)

B 1038 (for B 500 seat B 400, B 170
and B*150 saddles) . . . 12/6

A back rest will be found a great relief to those undertaking long runs.

The BROOKS patent adjustable back rest illustrated is a particularly convenient fitting. It is locked in position by a bolt running across below the rear of the saddle, and when it is required to drop the rest, this bolt may be pulled or pushed from either side. The height of the pad is readily adjustable.

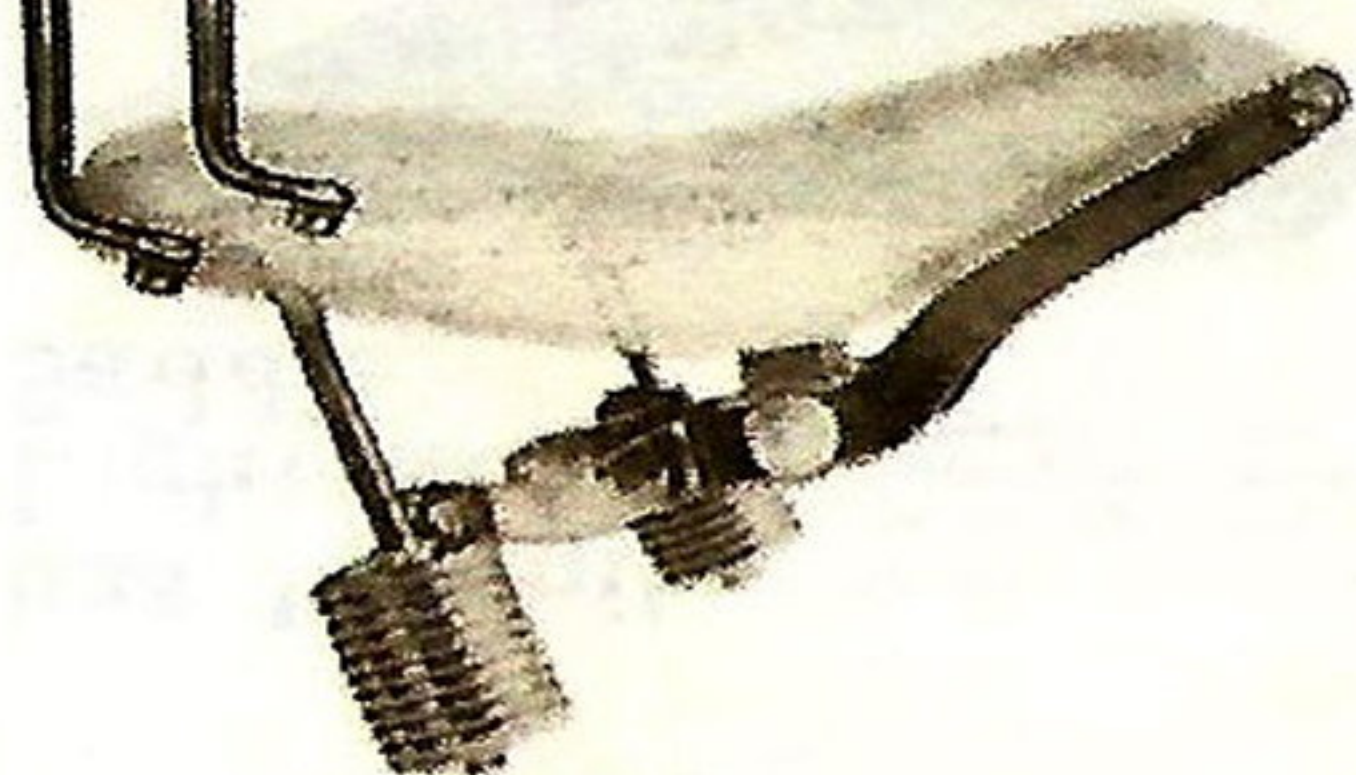
When ordering, kindly quote the number of the saddle, and give distance apart, centre to centre, of the bolts in rear of cantle plate.



B 3150 Motor Cycle Back Rest



Size of Pad, 12in. x 8in.
Weight 1lb. 7oz.
Height from top of seat to top of back rest,
7in.



PRICES (Enamel finish only).

B 3150 (for B 500 seat and B 400, B 170
and B 150 saddles) - - 7/6

A very simple and comfortable rest, which is
readily attached and removed.

B 5259 Motor Cycle Pannier Tool Bag

B 5259

Size 9in. x 4 1/2in. x 2 1/2in.



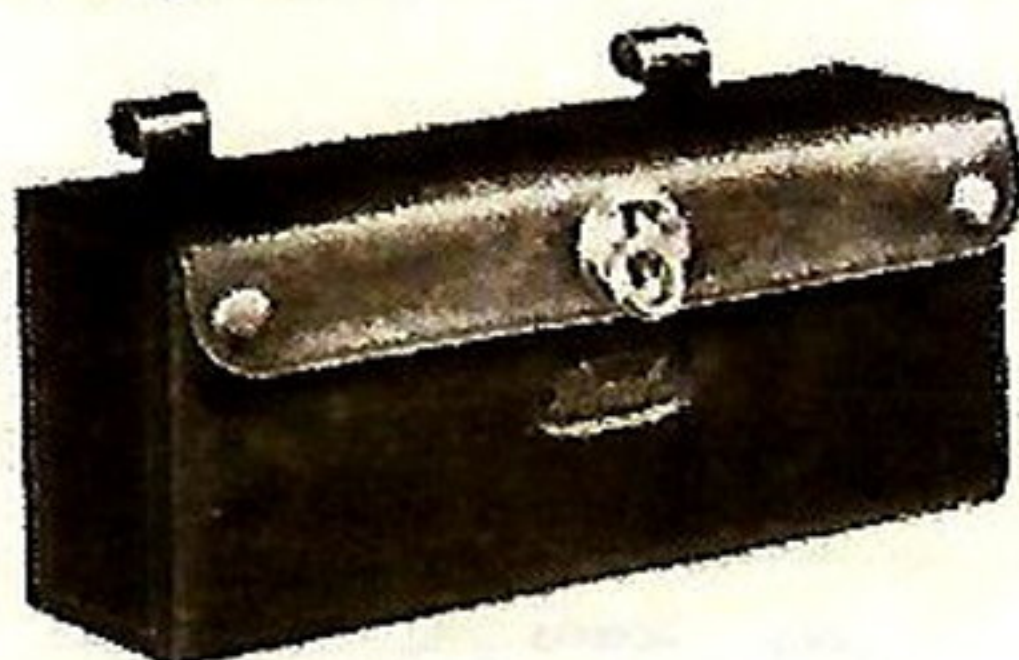
PRICE - each - 8/-

This bag is designed for attachment to the side
stays of the carrier, and a steel clip is included for
this purpose. It can be supplied either singly or
in pairs, and is made of good quality leather,
lined with special stiffening, and hand-sewn.
A roll-up with loops for tools can be supplied if
desired (see page 29). It is fitted with BROOKS
patent lock.

B 5429

Size 9in. x 4in. x 2½in.

Motor Cycle Pannier Tool Bag



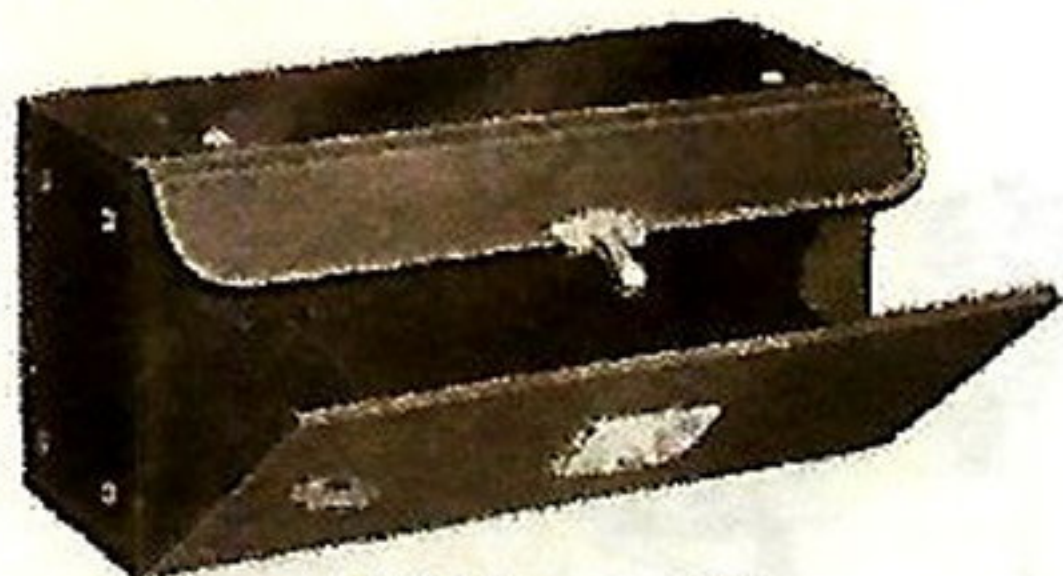
PRICE - 7/9

A good quality leather tool bag, strengthened throughout with steel framing. It can be supplied either singly or in pairs. A roll-up with loops for tools can be supplied if desired at an extra charge. (See page 29).

B 6877

Size 9in. x 4in. x 3½in.

Motor Cycle Pannier Tool Bag



PRICE - 7/6

Top, bottom and ends of this bag are of steel, front being of leather. Fitted with BROOKS patent lock, and is attached to the carrier by two steel clips.

B 7557

Size 9in. x 4in. x 3½in.

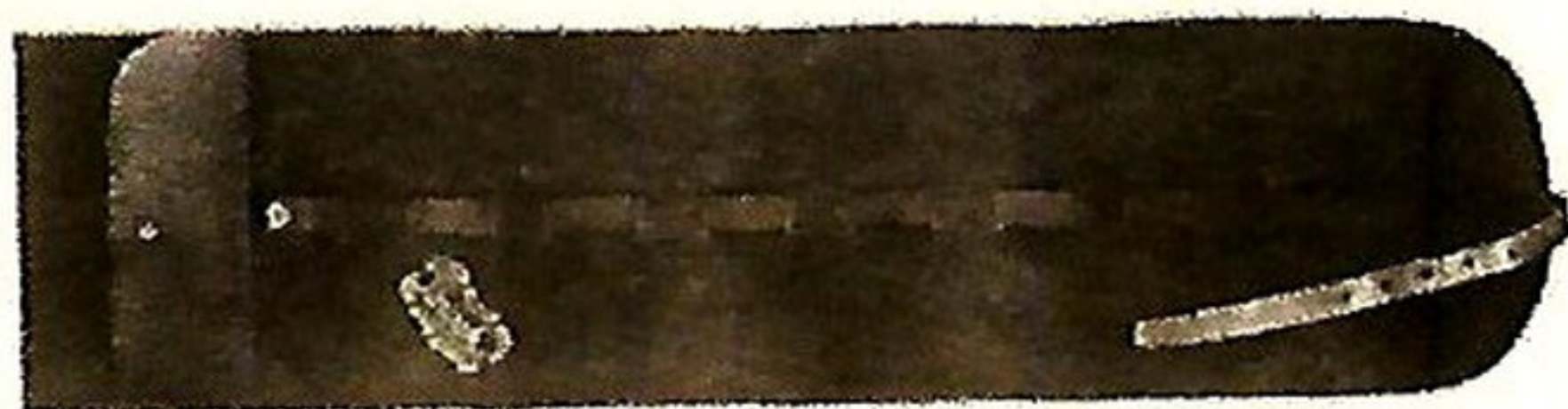
Motor Cycle Pannier Tool Bag



PRICE - 5/9

Top, bottom and ends of steel, front of grained leather. Secured with two straps as shown. Two steel clips are supplied for attaching to the carrier.

Motor Cycle Tool Roll-ups



B 3147 As illustrated. A well-made tool roll made of morocco grain basil with pocket and strap.

Size, 27½in. x 7½in.

PRICE 3/9

B 3146 Of morocco grain basil, but without pocket. Size, 23½in. x 7½in.

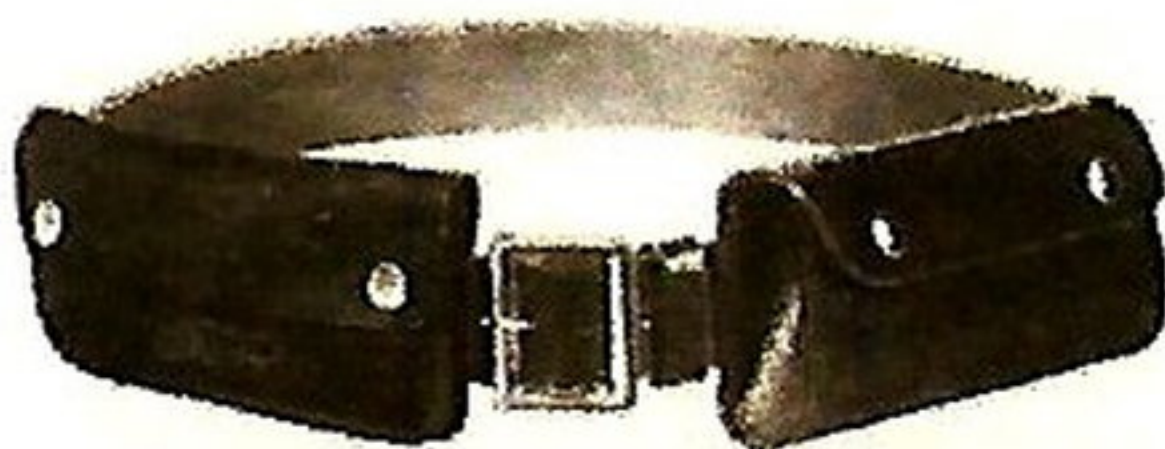
PRICE 2/6

B 7584 Of stout canvas, leather bound. Strap passes through steel loops; with pocket.

Size, 19½in. x 7½in.

PRICE 3/-

B 6510 Motor Cyclist's Belt



PRICES

Belt only, 38-44in. 1/6

Belt only, 45-52in. 1/9

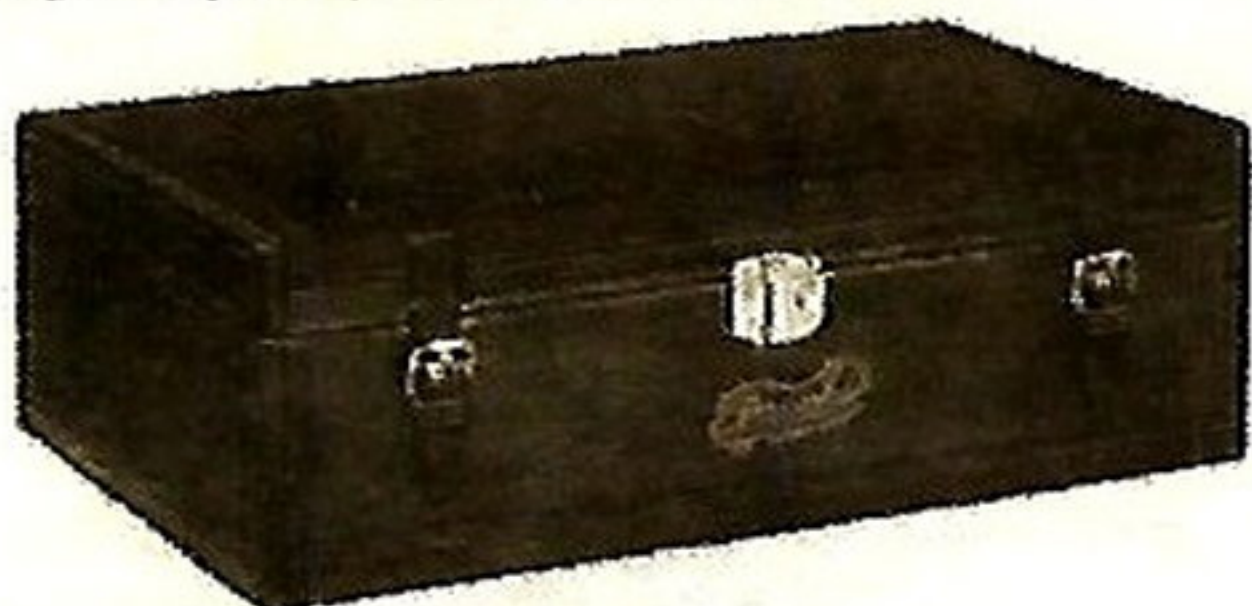
Belt, 38-44in. and Pouches 5/6

Belt, 45-52in. and Pouches 5/9

B 6510 is a well made belt of selected leather, and can be supplied either with or without pouches as shown in the illustration. It is most convenient for competition riders who desire to carry small spares in a quickly accessible position.

B 944 B 970 Motor Cycle Carrier Bags

Size 16½ in. x 10½ in. x 6½ in. outside measurements.



PRICES

B 944 - 22/- B 970 - 39/-

B 944 is made of the finest leatheroid on special three-ply boards. It is fitted with BROOKS patent lock and two straps, has special dust-excluding arrangement, and is attached to carrier by means of four steel clips.

B 970, as illustrated, is made of best quality leather.

B 2782 B 2783 Motor Cycle Carrier Bags

Registered No. 538203.

Size 16½ in. x 10½ in. x 6½ in. outside measurements.



PRICES

B 2782 - 28/6 B 2783 - 45/-

B 2782 is made of the finest leatheroid on special three-ply board, has special dust-excluding arrangement, and is fitted with BROOKS patent lock and two straps. It is attached to the carrier by means of four steel clips.

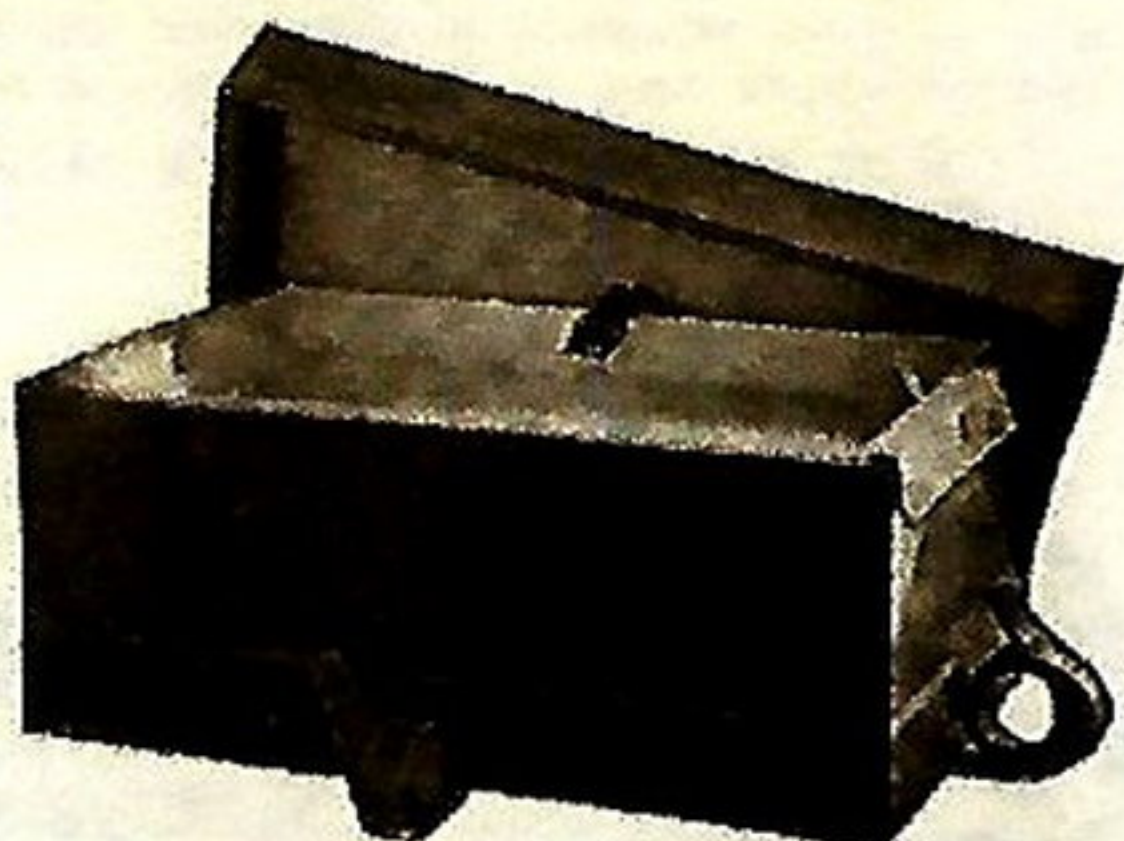
B 2783, as illustrated, is exactly similar in design, but the outside case is made of best quality leather. Both have removable inner cases which, with their contents, are perfectly protected from the elements.

B 1795 Motor Cycle Collapsible Carrier Bag

PATENTED.

Showing bag
expanded and
with tray in
position.

— Outside —
measurements
— when —
expanded,
16½ in. x 10½ in.
x 7 in.



PRICE - 22/6

Tray, 2/6 extra.

B 1795 is a very handy collapsible bag made of finest leatheroid on three-ply board.

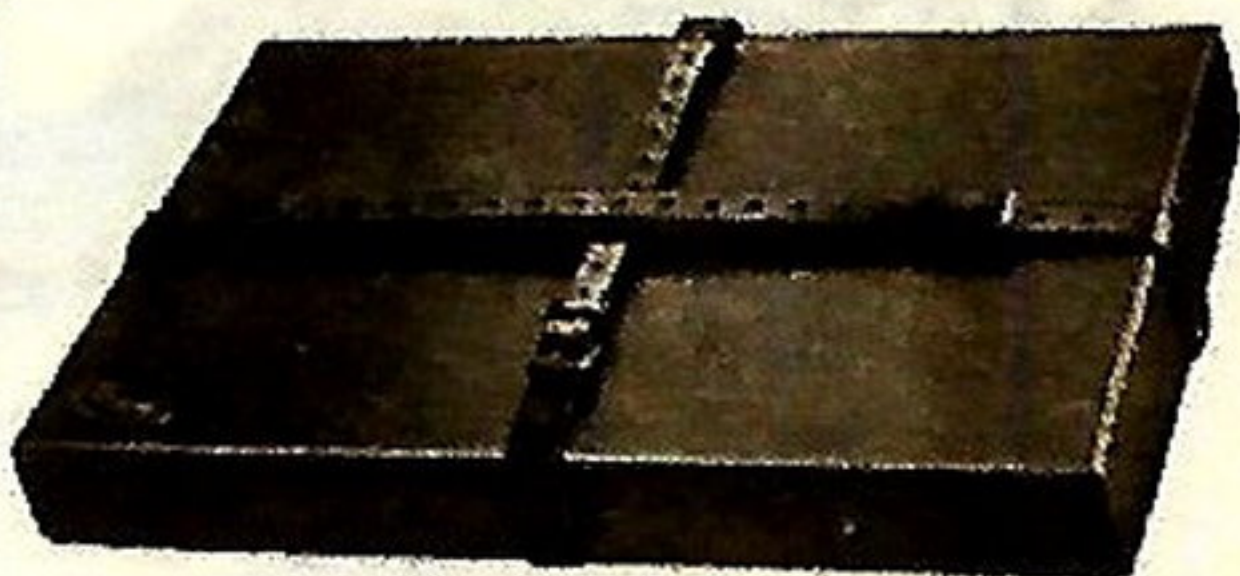
It is absolutely weatherproof and is fitted with steel clips for attachment in position.

When not in use it can be folded into a thickness of two inches.

A tray is provided at a slight extra cost and is recommended.

Showing bag
collapsed when
not in use.

— Outside —
measurements
— when —
collapsed,
16½ in. x 10½ in.
x 2 in.





B 961 (For ½ lb.) Motor Cycle Carbide Carrier

Registered No. 549107.

Size 2½ in. diameter, 4½ in. deep.
4½ in. over clip.

B 7370 (For 1 lb.)

Size 2½ in. diameter 9 in. deep.
4½ in. over clip.

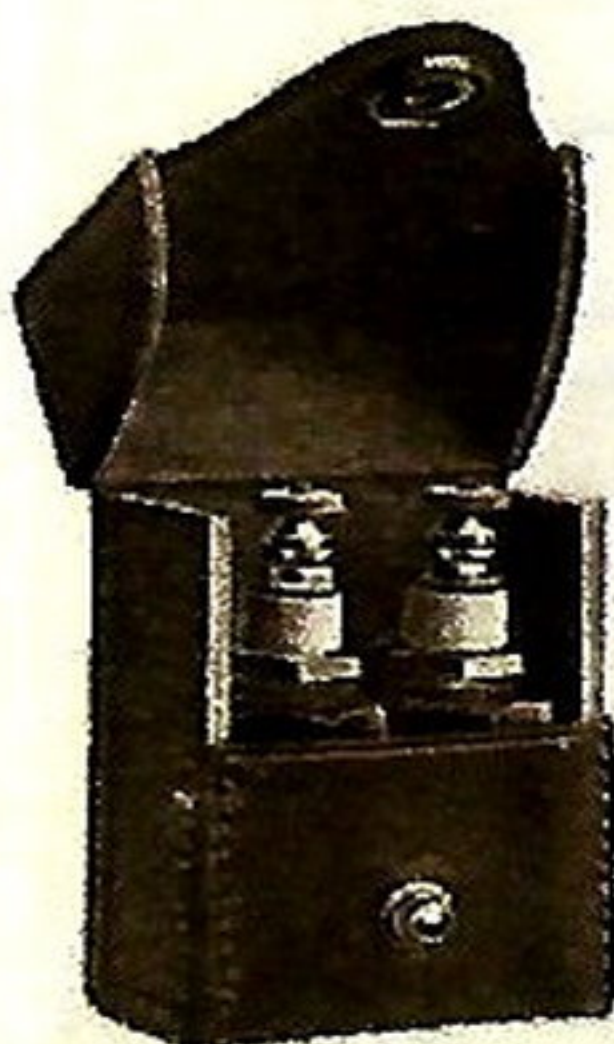
PRICES

B 961 . 2/3

B 7370 . 4/-

B 961 is strongly made of best leatheroid, and easily accommodates a half-pound tin of carbide. B 7370 is similar and takes one-pound tin.

Absolutely weatherproof, and can be attached to frame or side-car by means of the wing-nut clips with which they are fitted.



B 5674/1 Motor Cycle Plug Case

Size 2½ in. x 1½ in. x 3½ in.

PRICE . 2/-

This is a thoroughly strong and well-made leather case, fitted with a wood block at the bottom, tapped to take

two motor cycle plugs, thus preventing damage to the points.

B 963 and B 542 Motor Cycle Spare Belt and Tube Cases

Size 9 1/2 in. diameter x 3 1/2 in. deep.

B 963 is of finest leatheroid on three-ply board and B 542 is of best quality leather. The spare belt is carried in the outer and spare tube in the inner compartment: a leather cap for the valve, and felt pads top and bottom being provided for the tube space.

For further protection wrap the tube in a cloth dusted with French chalk, and if loose, inflate sufficiently to make a firm fit.

PRICES—

B 963 - 10/-

B 542 - 13/6



B 2889 and B 2890 Motor Cycle Belt Cases

Size 8 1/2 in. diameter x 2 1/2 in. deep.

B 2889 is of finest leatheroid, and B 2890 of best quality leather. Can be fitted on either side or on top of carrier.

Supplied with two steel clips for attaching to carrier.

PRICES—

B 2889 - 5/9

B 2890 - 9/6



B 419 and B 539 Repair Outfit Cases

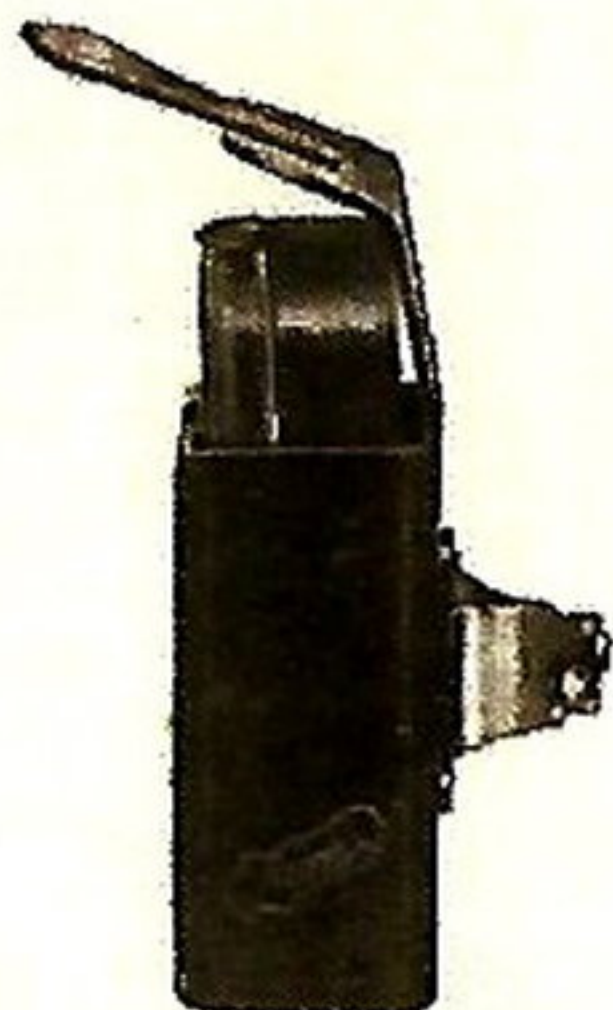
Size 4½ in. x 4 in. x 1½ in.

PRICES

B 419	-	4/-
B 539	-	2/6

B 419 is a well-made leather case, and is attached to the carrier stay by registered wing-nut clip.

B 539 is of similar design, but made of finest leatheroid on three-ply wood.



B 7265 and B 7614 Spare Tube Cases

Size 9½ in. x 2½ in. x 3½ in.



PRICES

B 7265	-	8/6	B 7614	-	6/3
--------	---	-----	--------	---	-----

B 7265 is an oblong case made of leather, lined baize and fitted with BROOKS Patent Lock and clips for securing in position.

B 7614 is similar, but of finest leatheroid.

B 535 and B 548 Motor Cycle Spare Tube Boxes

Size 6 in. diameter x 4 in. deep.

PRICES

B 535	-	6/-
B 548	-	5/11

B 535 is of finest leather, lid and bottom, lined felt, and a leather cap is provided for the valve of spare tube.

B 548 is similar but of best leatheroid on three-ply board.



B 2658 B 2657
BROOKS Patent
Spring Leggings
Full Length Pattern



Showing ease of removal. In position.

B 2658 in good quality black rubber-proofed cloth,
15/9 per pair.

B 2657 in finest water-proof canvas, **13/9** per pair.

All the above are made in four sizes, viz. :—

Size 1, 11½—12½in.	Size 2, 13—14in.
Size 3, 14½—16in.	Size 4, 16—17½in.

Measured round calf, outside trousers, not too tightly.

When ordering, please state size.

B 2049 B 2050
BROOKS Patent
Spring Leggings
Short Pattern



Showing ease of
removal.

In position.

B 2049 in good quality black rubber-proofed cloth
 11/- per pair.

B 2050 in finest water-proof canvas, 10/6 per pair.

All the above are made in four sizes, viz. :—

Size 1, 11½—12½in.	Size 2, 13—14in.
Size 3, 14½—16in.	Size 4, 16—17½in.

Measured round calf, outside trousers, not too tightly.

When ordering please state size.

These leggings are held firmly in place by spring clips below knee and above ankle, and, while affording complete protection, are very quickly put on and off.

The spring clips are anatomically shaped to avoid local pressure and can be worn indefinitely without discomfort.

THE
BROOKS

REGISTERED TRADE MARK

BOOK

of
Saddles
Bags, &c.

for

Cycles and
Motor Cycles.

1916