



SMITHS MOTOR CYCLE EQUIPMENT

1960

THREE-WHEELERS, "BUBBLE" CARS, INVALID CHAIRS — see page 9

SMITHS

Motor Cycle Equipment — 1960

Make	Model & Description	Speedometer		Rev Indicator	Flexible Drive †		Gear Box	Gear Box Pinion	Gear Ring	K.L.C. Sparking Plugs	Petro-Flex
		Miles	Kilos		Complete	Length					
A.J.S.	14 248cc	SN. 3153/83	SN. 3153/84	ATRC. 2652/N	DF. 1110/22	5'2"	BG. 5330/227			FE. 80**	
	14CS 248cc	SN. 3153/85	SN. 3153/86		DF. 1110/22	5'2"	BG. 5330/267			FE. 80**	
	16 347cc	SC. 3312/00	SC. 3312/01		DF. 1110/22	5'5"	BG. 5330/267			FE. 80**	
	16C 347cc	SC. 5301/09*	SC. 5301/16*		DF. 1110/22	5'2"	BG. 5330/267			FE. 80**	
	8 348cc	SN. 3153/95	SN. 3153/96		DF. 1110/22	5'3"	BG. 5330/227			FE. 80**	
	7R O.H.C. 349cc				DF. 1111/15	1'10"	BG. 1507/02			***	FFP. 503/12
	18 498cc	SC. 3312/00	SC. 3312/01		DF. 1110/22	5'5"	BG. 5330/267			FE. 80**	
	18CS 497cc	SC. 5301/09*	SC. 5301/16*		DF. 1110/22	5'5"	BG. 5330/267			FE. 80**	
	20 Twin 498cc	SC. 3312/00	SC. 3312/01		DF. 1110/22	5'5"	BG. 5330/267			FE. 80**	
	20 Twin 498cc				DF. 1111/15	2'2 $\frac{1}{2}$ "	BG. 1508/01			FE. 80**	
	31 Twin 646cc +	SC. 3312/00	SC. 3312/01		DF. 1110/22	5'5"	BG. 5330/267			FE. 80**	
	31 Twin 646cc	SC. 5301/09*	SC. 5301/16*		DF. 1111/15	2'2 $\frac{1}{2}$ "	BG. 1508/01			FE. 80**	
	31CS Twin 646cc	SC. 3312/00	SC. 3312/01		DF. 1110/22	5'5"	BG. 5330/267			FE. 80**	
	31CSR Twin 646cc				DF. 1110/22	5'5"	BG. 5330/267			FE. 80**	
AMBASSADOR	Popular 174cc	SN. 3153/55	SN. 3153/56	DF. 1111/02	2'10 $\frac{1}{2}$ "					F. 80	FPF. 503/9
	Super S 249cc	SC. 3303/19*	S. 467/221/N*	DF. 1111/02	3'1"					F. 80	FPF. 503/9
	Zundapp Combinette			DF. 8231/04	4'4 $\frac{1}{2}$ "					F. 80	
	Moped	ASM. 3100/00	ASM. 3100/01	DF. 8231/04	4'4 $\frac{1}{2}$ "					F. 80	
Zundapp 438 70cc	ASM. 3100/00	ASM. 3100/00									
Three Star Special 200cc	SN. 3153/28	SN. 3153/29									
ARIEL	Leader Twin 249cc****	SC. 1301/00	SC. 1301/01	DF. 1111/02	3'1"					FE. 80	
	(Non-Trip Speedo.)			DF. 1111/19	3'1"					FE. 80	
	Leader Twin 249cc****	SC. 5309/00	SC. 5309/01	DF. 1111/19	3'1"					FE. 80	
(Trip Speedo.)	SN. 3153/97	SN. 3153/98									
TS2											
BOND	P3 Scooter 148cc	SN. 3153/71		DF. 1111/02	3'8"					F. 80	
	P4 Scooter 197cc	SN. 3153/65		DF. 1111/02	3'8"					F. 80	
B.S.A.	Dandy 70cc (Leg Shield Fitting)	SN. 3118/00	SN. 3118/01	DF. 7302/01	2'1"		BG. 5322/001			F. 70	

† For Separate Inner & Outer Flexible Drives See Chart I (Back Cover)
 * For Speedometer with Alternative Speed Range See Chart II (Back Cover)
 ** Three Earth-Point Version.
 + Speedometer Bracket 31-674-109-01 also required.
 † Optional Equipment
 *** Recommendation on Request According to Ture & Fuel etc.
 **** Optional Lever Clock CL. 2104/00 also available.

Make	Model & Description	Speedometer		Rev Indicator	Flexible Drive †		Gear Box	Gear Box Pinion	Gear Ring	K.L.G. Sparking Plugs	Petro-Flex
		Miles	Kilos		Complete	Length					
B.S.A. (Cont'd)	Dandy 70cc (Headlamp Fitting)	SM. 3601/00	SM. 3601/01		DP. 8231/02	2'8"	BG. 5320/001			F. 70	
	D1 Bantam 123cc	SC. 1102/07	S. 630/K/L		DP. 1110/21	4'8"	BG. 5331/247			F. 70	
	D1 Bantam 123cc (N. America Only)	SC. 1102/14			DP. 1110/21	4'8"	BG. 5331/247			F. 70	
	D7 Bantam Super 174cc	SN. 3153/79	SN. 3153/80		DP. 1110/21	4'8"	BG. 5331/247			F. 70	
	B1 Sunbeam 174cc	SN. 3153/78	SN. 3153/88		DP. 1106/14	4'8½"				F. 100	
	B2 Sunbeam Twin 249cc (O.H.V. 6 Volt)	SN. 3153/78	SN. 3153/88		DP. 1106/14	4'8½"				F. 70	
	B2/S Sunbeam Twin 249cc (O.E.V. 12 Volt)	SN. 3153/77	SN. 3153/87		DP. 1106/14	4'8½"				F. 70	
	C15 250 Star 249cc	SN. 3153/67	SN. 3153/68		DP. 1110/21	4'8"	BG. 5331/247			FE. 70	FFP. 506/14
	C15 O.H.V. Trials 249cc	SC. 1102/07	S. 630/K/L		DP. 1110/21	4'8"	BG. 5331/247			F. 70	FFP. 506/14
	B35 499cc	SC. 3305/04	SC. 3305/05		DP. 1110/21	3'8"				FE. 70	FFP. 506/14
	B34 Gold Star Clubman 499cc	SC. 5301/11	SC. 5301/12		DP. 1110/21	3'5"				FE. 70	FFP. 506/14
	B34 Gold Star Clubman 499cc (N. America Only)	SC. 5301/23f		ARG. 1302/00	DP. 1111/15	3'2"	BG. 1508/04			FE. 70	FFP. 506/14
	B34 Gold Star Scrambler 499cc	SC. 5301/07*	SC. 5301/08*	RC. 1302/00	DP. 1111/15	3'2"	BG. 1508/04			FE. 70	FFP. 506/14
	B34 Gold Star Scrambler 499cc (N. America Only)	SC. 5301/07*	SC. 5301/08*	ARG. 1302/00	DP. 1111/15	3'2"	BG. 1508/04			FE. 70	FFP. 506/14
	B34 Gold Star Scrambler 499cc (N. America Only)	ASC. 5301/24		RC. 1302/00	DP. 1111/15	3'2"	BG. 1508/04			FE. 70	FFP. 506/14
	A7 Twin Sole 497cc	SC. 3305/04	SC. 3305/05		DP. 1110/21	3'8"				F. 70	FFP. 506/18
	A7 Twin Sidecar 497cc	SC. 3305/06	SC. 3305/07		DP. 1110/21	3'8"				F. 70	FFP. 506/18
	A7 Shooting Star Twin Sole 497cc	SC. 3305/04	SC. 3305/05		DP. 1110/21	3'8"				FE. 100	FFP. 506/18
	A7 Shooting Star Twin Sidecar 497cc	SC. 3305/06	SC. 3305/07		DP. 1110/21	3'8"				FE. 100	FFP. 506/18
	A10 Road Rocket Twin 646cc (With Cowl)	SC. 3305/04	SC. 3305/05	ARG. 1302/00	DP. 1110/20	2'10½"				F. 100	FFP. 506/18
	A10 Road Rocket Twin 646cc (With Cowl)	SC. 5301/06	SC. 5301/17	ARG. 1302/00	DP. 1110/21	3'10½"				F. 100	FFP. 506/18
	A10 Road Rocket Twin 646cc (Without Cowl)	SC. 5301/06	SC. 5301/17	ARG. 1302/00	DP. 1110/20	3'10½"				F. 100	FFP. 506/18
	A10 Road Rocket Twin 646cc (Without Cowl)	SC. 5301/06	SC. 5301/17	ARG. 1302/00	DP. 1110/20	3'10½"				F. 100	FFP. 506/18

† For Separate Inner & Outer Flexible Drives See Chart I (Back Cover)
 * For Speedometer with Alternative Speed Range See Chart II (Back Cover)
 ** Three Earth-Point Versions.

† Optional Equipment
 *** Recommendation on Request According to Tune & Fuel etc.

Make	Model & Description	Speedometer		Rev Indicator	Flexible Drive †		Gear Box	Gear Box Pinion	Gear Ring	K. L. G. Sparking Plugs	Petro-Flex
		Miles	Kilos		Complete	Length					
B. S. A. (Cont'd)	A10 Road Rocket Twin 645cc (N. America Only)	SC. 5301/06*			DF. 1111/21	3'10 1/2"				P. 100	FFF. 506/18
	A10 Road Rocket Twin 645cc (N. America Only)	A9C. 3305/12 SC. 5301/11	SC. 5301/12	SC. 1302/00	DF. 1111/20 DF. 1111/21	2'10 1/2" 4'2"				P. 100 FF. 50	FFF. 506/18
	M21 591cc				DF. 1111/15	3'0"				P. 80	FFF. 503/8
	Vulcan 197cc Cotanza 242cc Anzani Engine	SN. 3153/20	SN. 3153/22		DF. 1111/15	4'6"		BG. 2510/01	31-812-110		P. 70
COTTON	Herald 250cc Cotanza 225cc Anzani Engine	SN. 3153/20	SN. 3153/22		DF. 1111/15	3'6"		BG. 2510/01	31-812-110	P. 80	FFF. 503/8
	Messenger 325cc Villiers Engine	SN. 3153/20	SN. 3153/22		DF. 1111/15	4'6"		BG. 2510/01	31-812-110	P. 70	FFF. 501/7
	Flamenco 173cc	SC. 3303/17			DF. 1111/15	3'6"				P. 80	FFF. 503/8
	Albatross Twin 225cc Continental Twin 249cc	SN. 3153/71 SN. 3153/26 SN. 3153/26	SN. 3153/28 SN. 3153/28		DF. 1111/15 DF. 1111/15 DF. 1111/15	3'9" 4'3" 4'3"		BG. 5117/047 BG. 5117/047 BG. 5117/047			P. 80 P. 80 P. 80
D. K. R.	Dove 14.7cc	SN. 3153/63			DF. 1111/00	3'0"		BG. 5117/047		P. 80	
	Pegasus 148cc	SN. 3153/69			DF. 1111/00	3'0"		BG. 5117/047		P. 80	
	Defiant 197cc	SN. 3153/69			DF. 1111/00	3'0"		BG. 5117/047		P. 80	
	Manx 249cc	SN. 3153/76			DF. 1111/00	3'0"		BG. 5117/047		P. 80	
D. M. W.	Bumbi Scooter 98cc	SN. 3153/50	SN. 3153/51		DF. 1106/14	3'0"		BG. 5121/635		P. 70	
	Mk. 9 197cc	SC. 1101/07	S. 661/K/L		DF. 1111/15	3'2"				P. 80	
	Dolomite II Twin 249cc	SC. 3303/42			DF. 1111/15	3'2"				P. 80	
	Dolomite IIA 324cc	SC. 3303/09	SC. 3303/12		DF. 1111/15	3'2"				P. 80	
DOT	Dolomite III 250cc	SC. 3303/41			DF. 1111/15	3'2"				P. 80	
	Dolomite IIIA 324cc	SC. 3303/40			DF. 1111/15	3'2"				P. 80	
	Mk. 10 Trials 249cc	SC. 1102/06	S. 658/K/L		DF. 1111/15	3'2"		BG. 2519/10	31-812-102	P. 80	
	200 THX 197cc	SC. 1101/02	S. 644/K/N		DF. 1111/15	3'3"				***	
	200 THX 197cc	SC. 1101/02	S. 644/K/N		DF. 1111/15	3'3"				***	
	250 THX 249cc	SC. 1101/02	S. 644/K/N		DF. 1111/15	3'3"				***	
	250 THX 249cc	SC. 1101/02	S. 644/K/N		DF. 1111/15	3'3"				***	
	200 WR Trials 197cc	SC. 1101/02	S. 644/K/N		DF. 1111/15	3'3"				***	
	250 WR Trials 249cc	SC. 1101/02	S. 644/K/N		DF. 1111/15	3'3"				***	
	200 SH 197cc	SC. 1101/02	S. 644/K/N		DF. 1111/15	3'3"				***	
	250 SH 249cc	SC. 1101/02	S. 644/K/N		DF. 1111/15	3'3"				***	
	DUNKLEY	200 SCH 197cc	SC. 1101/02	S. 644/K/N		DF. 1111/15	3'3"				***
250 SCH 249cc		SC. 1101/02	S. 644/K/N		DF. 1111/15	3'3"				***	
Sportsmans Roadster 349cc		SC. 3303/20	SC. 3303/19		DF. 1111/15	5'0"		BG. 2511/00	31-812-110	***	
Popular 49cc		SM. 3100/00			DF. 8231/02	2'0"		BG. 5330/227		P. 50	

† For Separate Inner & Outer Flexible Drives See Chart I (Back Cover)
 * For Speedometer with Alternative Speed Range See Chart II (Back Cover)
 ** Three Earth-Point Version.
 † Optional Equipment
 *** Recommendation on Request According to Tune & Fuel etc.

Make	Model & Description	Speedometer		Rev Indicator	Flexible Drive *		Gear Box	Gear Box Pinion	Gear Ring	K.L.C. Sparking Plugs	Petro-Plex
		Miles	Kilos		Complete	Length					
DUNKLEY (Cont'd)	S.65 64cc	SM.3100/00			DF.8231/02	2'10"	BG.5330/227			F.50	
	Whippet 61cc	SN.3110/06			DF.7902/01	2'2"	BG.5322/021			F.50	
	Whippet Sports 64cc	SM.3100/00			DF.8231/02	1'9 1/2"	BG.5348/421			F.50	
EXCELSIOR	F10 Consort 98cc	SC.3301/21			DF.1110/21	4'5 1/2"	BG.5331/227			F.70	
	C10 Consort 98cc	SC.1102/01	S.531/R/L		DF.1110/20	3'9 1/2"	BG.5331/227			F.70	
	R10 Roadmaster 197cc	SN.3153/20	SN.3153/22		DF.1110/20	4'5 1/2"	BG.5331/227			F.70	
	U10 Universal 14.7cc	SN.3153/20	SN.3153/22		DF.1110/20	4'5 1/2"	BG.5331/227			F.70	
	ME/K Scooter (6 volt)	SN.3153/63			DF.1111/00	3'0"				FE.70D	
	ME/K Scooter (12 volt)	SN.3153/69			DF.1111/00	3'0"				F.70D	
	TT6 Talisman 246cc	SN.3153/20	SN.3153/22		DF.1110/20	4'5 1/2"	BG.5331/227			FE.70	
	S9 Special Talisman 328cc	SC.3303/21	S.467/125/N		DF.1110/20	4'6 1/2"	BG.5331/227			FE.70D	
	75 Light Cruiser 171cc	SN.3153/26	SN.3153/38		DF.1110/26	4'8"	BG.5330/247			FE.70	
87 Falcon 197cc	SN.3153/55	SN.3153/56		DF.1110/26	4'8"	BG.5330/247			F.80		
80 Cruiser 249cc	SN.3153/55	SN.3153/56		DF.1110/24	4'9"	BG.5330/247			FE.70		
84 Cruiser 249cc	SN.3153/55	SN.3153/56		DF.1110/24	4'9"	BG.5330/247			FE.70		
85 Trials 249cc	SC.1102/06			DF.1110/24	4'6"	BG.5330/247			FE.70		
GEEVES	20TA Scottish Trials 197cc	SC.1102/15			DF.1111/16	4'8"	BG.2504/01			F.80	
	20TAS Scottish Special 197cc	SC.1102/15			DF.1111/16	4'8"	BG.2504/01			F.80	
	24DB Sports 248cc	SN.3153/55			DF.1111/16	4'8"	BG.2504/01			F.80	
	24TAS Scottish Special 248cc	SC.1102/15			DF.1111/16	4'8"	BG.2504/01			F.80	
	25DB Sports 249cc	SN.3153/55			DF.1111/16	4'8"	BG.2504/01			F.80	
INDIAN	250 Scrambler 250cc	SC.1101/06			DF.1110/21	4'6"	BG.5303/10			F.80	
	Fury 500cc	SC.5301/09			DF.1110/21	4'6"	BG.5303/10			FE.80	
	Fury 500cc	SC.5301/09			DF.1111/15	2'4"	BG.1508/00			FE.80	
	U.S.A. Super Meteor 692cc	SC.3303/01			DF.1110/30	4'11"	BG.5303/10			FE.70	
	U.S.A. Super Meteor 692cc	SC.3303/01			DF.1111/15	3'7"	BG.1508/01			FE.70	
	Galaxy 692cc	SC.3303/01			DF.1110/30	4'11"	BG.5303/10			FE.80	
	Galaxy 692cc	SC.3303/01			DF.1111/15	3'7"	BG.1508/01			FE.80	
	U.S.A. Constellation 692cc	SC.3303/01			DF.1110/30	4'11"	BG.5303/10			FE.80	
	U.S.A. Constellation 692cc	SC.3303/01			DF.1111/15	3'7"	BG.1508/01			FE.80	
	Interceptor 692cc	SC.5301/09			DF.1110/30	4'11"	BG.5303/10			FE.80	
Super Meteor Airflow 692cc	SC.3303/01			DF.1111/15	3'7"	BG.1508/01			FE.80		
Super Meteor Airflow 692cc	SC.3303/01			DF.1110/30	5'3"	BG.5303/10			FE.70		
Super Meteor Airflow 692cc	SC.3303/01			DF.1111/15	3'7"	BG.1508/01			FE.70		

† For Separate Inner & Outer Flexible Drives See Chart I (Back Cover)
 * For Speedometer with Alternative Speed Range See Chart II (Back Cover)
 ** Three Earth-Point Version.
 ‡ Optional Equipment
 *** Recommendation on Request According to Tune & Fuel etc.

Make	Model & Description	Speedometer		Rev Indicator	Flexible Drive †		Gear Box	Gear Box Pinion	Gear Ring	X.L.G. Sparking Plugs	Petro-Flex
		Miles	Kilos		Complete	Length					
JAMES	L1 Comet 100 98cc	SN. 3153/26	SN. 3153/38		DF. 1110/20	4'7"	BG. 5330/227			F. 70	
	L15 Cudet 150 147cc	SN. 3153/26	SN. 3153/38		DF. 1110/20	4'7"	BG. 5330/227			F. 70	
	L20 172cc	SN. 3153/26	SN. 3153/38		DF. 1110/20	4'7"	BG. 5330/227			FE. 70	
	L25 Commodore 249cc	SN. 3153/26	SN. 3153/38		DF. 1110/20	4'7"	BG. 5330/227			FE. 70	
	L25T Comandoro 249cc	SC. 1102/09	S. 611/X/L		DF. 1110/20	4'7"	BG. 5330/227			F. 90	
	G2 248cc	SN. 3153/B3	SN. 3153/84		DF. 1110/22	5'2"	BG. 5330/227			FE. 80**	
	G2CS 248cc	SN. 3153/85	SN. 3153/86		DF. 1110/22	5'2"	BG. 5330/267			FE. 80**	
	G3 347cc	SC. 3303/38*	SC. 3303/07*		DF. 1110/22	5'5"	BG. 5330/267			FE. 80**	
	G30 347cc	SC. 5301/09*	SC. 5301/16*		DF. 1110/22	5'2"	BG. 5330/267			FE. 80**	
	G5 348cc	SN. 3153/35	SN. 3153/96	ATRC. 2652/N	DF. 1111/15	1'10"	BG. 1507/02			FE. 80**	
	G50 496cc	SC. 3312/00	SC. 3312/01		DF. 1110/22	5'5"	BG. 5330/267			FE. 80**	
	G80 498cc	SC. 5301/09*	SC. 5301/16*		DF. 1110/22	5'5"	BG. 5330/267			FE. 80**	
G80CS 497cc	SC. 3312/00	SC. 3312/01		DF. 1110/22	5'5"	BG. 5330/267			FE. 80**		
G9 Twin 498cc	SC. 3312/00	SC. 3312/01		DF. 1111/15	2'2 1/2"	BG. 1508/01			FE. 80**		
G12 Twin 646cc	SC. 3312/00	SC. 3312/01	ARC. 1304/OO	DF. 1110/22	5'5"	BG. 5330/267			FE. 80**		
G12 Twin 646cc	SC. 5301/09*	SC. 5301/16*	ARC. 1304/OO	DF. 1111/15	2'2 1/2"	BG. 1508/01			FE. 80**		
G12CS Twin 646cc	SC. 3312/00	SC. 3312/01		DF. 1110/22	5'5"	BG. 5330/267			FE. 80**		
G12CSR Twin 646cc				DF. 1110/22	5'5"	BG. 5330/267			FE. 80**		
NORMAN	Lido 50cc	SM. 3101/00			DF. 8231/02	2'11 1/2"	BG. 5348/111			F. 90	
	Nippy 50cc	SM. 3101/00			DF. 8231/02	2'11 1/2"	BG. 5348/111			F. 90	
	B18 148cc	SN. 3153/28	SN. 3153/29		DF. 1111/00	4'10"	BG. 2500/02			F. 80	
	B2S Roadster (3 Speed)	SN. 3153/28	SN. 3153/29		DF. 1111/00	2'9"				F. 80	
	B2S Roadster (4 Speed)	SN. 3153/28	SN. 3153/29		DF. 1111/00	3'0"				F. 80	
	B2S Sports (3 Speed)	SN. 3153/28	SN. 3153/29		DF. 1111/00	2'9"				F. 80	
	B2S Sports (4 Speed)	SN. 3153/43	SN. 3153/44		DF. 1111/00	3'0"				F. 80	
	B2S Comp. 197cc	SC. 1102/04	SC. 1102/05		DF. 1111/00	2'11"				F. 80	
	B3 Roadster 249cc	SN. 3153/20	SN. 3153/22		DF. 1111/00	3'2"				F. 80	
	B3 Sports 249cc	SN. 3153/20	SN. 3153/22		DF. 1111/00	3'2"				F. 80	
	Jubilee 250 249cc	SN. 3153/20	SN. 3153/22	ATRC. 2652	DF. 1110/21	5'0"	BG. 5330/247			FE. 100	
	40M 348cc				DF. 1111/15	1'9"	BG. 1507/01			***	
50 348cc	SC. 3303/17	SC. 3303/02		DF. 1110/22	5'7 1/2"	BG. 5330/257			FE. 80		
52 490cc	SC. 3303/17	SC. 3303/02		DF. 1110/22	5'7 1/2"	BG. 5330/257			FE. 80		
88 Dominator 497cc	SC. 3303/17	SC. 3303/02		DF. 1110/22	5'7 1/2"	BG. 5330/257			FE. 80		
30X 499cc	SC. 3303/17	SC. 3303/02	ATRC. 2652	DF. 1111/15	1'9"	BG. 1507/01			***		
99 Dominator 597cc	SC. 3303/17	SC. 3303/02		DF. 1110/22	5'7 1/2"	BG. 5330/257			FE. 80		
Nomad 500 600cc (American Markets)	SC. 3303/24*	S. 467/191/N*		DF. 1110/22	5'7 1/2"	BG. 5330/257			FE. 100		
Rickshaw (Shaft Drive Model) †	SC. 3303/26			DF. 1111/22	4'0"	BG. 2500/06					

† For Separate Inner & Outer Flexible Drives See Chart I (Back Cover)
 * For Speedometer with Alternative Speed Range See Chart II (Back Cover)
 ** Three Earth-Point Version.
 † Optional Equipment
 *** Recommendation on Request According to Tune & Fuel etc.
 + Speedometer Bracket 31-574-110-01 also required.

Make	Model & Description	Speedometer		Rev Indicator	Flexible Drive †		Gear Box	Gear Box Pinion	Gear Ring	K.L.G. Sparking Plugs	Petro-Flex			
		Miles	Kilos		Complete	Length								
PANTHER (FRELON & MOORE)	Princess TS.175cc (6 volt)	SM.3153/28			DF.1111/15	4'3"	EG.2517/00			F.80 F.80 F.80 F.80 F.80 F.80 F.70 F.70 F.70 F.80 F.80 F.80 F.80				
	Princess TS.175cc (12 volt)	SM.3153/71			DF.1111/15	4'3"								
	10/3 197cc	SM.3153/37	SM.3153/54		DF.1111/15	5'0"								
	10/4 197cc	SM.3153/43	SM.3153/44		DF.1111/15	3'1"								
	35 Twin 249cc	SM.3153/20	SM.3153/22		DF.1111/15	3'1"								
	35 Sports Twin 249cc	SM.3153/20	SM.3153/22		DF.1111/15	3'1"								
	45 Sports Twin 324cc	SM.3153/20	SM.3153/22		DF.1111/15	3'1"								
	50 Sports Twin 324cc	SC.3303/17	SC.3303/02		DF.1111/15	3'1"								
	65 Springer 248cc	SC.3303/16	S.467/205/N		DF.1111/15	5'0"								
	75 Springer 348cc	SC.3303/16	S.467/205/N		DF.1111/15	5'0"								
	100 598cc	SC.3303/17	SC.3303/02		DF.1111/15	5'6"								
	1208 De Luxe 645cc	S.467/203/N	SC.3303/02		DF.1111/15	5'6"								
	PHILLIPS	Gadabout 49cc	SM.3101/02	SM.3101/03		DF.8231/02		2'1"	EG.5338/121				F.80	
	RALEIGH	Moped 49cc	SM.3110/00			DF.7302/01		2'2"					F.75	
ROYAL	Prince 148cc	SM.3153/20	SM.3153/22		DF.1110/20	2'11"	EG.5303/05			F.20				
	Prince Airflow 148cc	SC.1102/04	SC.1102/05		DF.1110/20	2'32"	EG.5303/05			F.20				
ENFIELD	250 Clipper 248cc	SC.3303/20	SC.3303/39		DF.1110/21	4'4"	EG.5303/10			F.80				
	250 Clipper Airflow 248cc	SC.3303/20	SC.3303/39		DF.1110/30	4'9"	EG.5303/10			F.80				
	Crusader 248cc	SC.3303/20	SC.3303/39		DF.1110/21	4'4"	EG.5303/10			F.80				
	Crusader Airflow 248cc	SC.3303/20	SC.3303/39		DF.1110/30	4'9"	EG.5303/10			F.80				
	Crusader Sports 248cc	SC.3303/20	SC.3303/39		DF.1110/21	4'4"	EG.5303/10			F.80				
	Crusader Sports Airflow 248cc	SC.3303/20	SC.3303/39		DF.1110/30	4'9"	EG.5303/10			F.80				
	350 Trials 346cc	SC.3303/20	SC.3303/39		DF.1110/21	4'6"	EG.5303/10			F.80				
	350 Trials 346cc	SC.3303/30	S.467/69/N		DF.1110/21	2'4"	EG.1503/00			***				
	350 Clipper 346cc	SC.3303/20	SC.3303/39		DF.1110/21	4'6"	EG.5303/10			***				
	350 Clipper 346cc	SC.3303/20	SC.3303/39		DF.1111/15	2'4"	EG.1503/00			F.70				
	350 Clipper Airflow 346cc	SC.3303/20	SC.3303/39		DF.1110/30	4'11"	EG.5303/10			F.70				
	350 Clipper Airflow 346cc	SC.3303/20	SC.3303/39		DF.1110/21	2'4"	EG.1503/00			F.70				
	350 Bullet 346cc	SC.3303/20	SC.3303/39		DF.1111/15	2'4"	EG.5303/10			F.70				
	350 Bullet 346cc	SC.3303/20	SC.3303/39		DF.1110/21	4'6"	EG.5303/10			F.70				
350 Bullet Airflow 346cc	SC.3303/20	SC.3303/39		DF.1111/15	2'4"	EG.1503/00			F.70					
350 Bullet Airflow 346cc	SC.3303/20	SC.3303/39		DF.1110/30	4'11"	EG.5303/10			F.70					
Meteor Minor Deluxe 496cc				DF.1111/15	2'4"	EG.1503/00			F.70					
Meteor Minor Deluxe 496cc				DF.1110/21	4'6"	EG.5303/10			F.70					
Meteor Minor Deluxe 496cc				DF.1111/15	2'4"	EG.1503/00			F.70					
Meteor Minor Deluxe 496cc				DF.1110/30	4'11"	EG.5303/10			F.70					

† For Separate Inner & Outer Flexible Drives See Chart I (Back Cover)
 * For Speedometer with Alternative Speed Range See Chart II (Back Cover)
 ** Three Earth-Point Version.
 † Optional Equipment.
 *** Recommendation on Request According to Tune & Fuel etc.

Make	Model & Description	Speedometer		Rev Indicator	Flexible Drive †		Gear Box	Gear Box Pinion	Gear Ring	K.L.G. Sparking Plugs	Petro-Flex
		Miles	Kilos		Complete	Length					
ROYAL ENFIELD (Cont'd)	Meteor Minor Deluxe Airflow 495cc	SC. 3303/20	SC. 3303/39	ARC. 184	DF. 1110/30	4'11"	BG. 5303/10			P. 70	
	Meteor Minor Deluxe Airflow 495cc				DF. 1111/15	3'7"	BG. 1508/01				
	Meteor Minor Sports 496cc	SC. 3303/20	SC. 3303/39	ARC. 184	DF. 1110/21	4'6"	BG. 5303/10			FE. 70	
	Meteor Minor Sports 496cc				DF. 1111/15	2'4"	BG. 1505/00			FE. 70	
	Meteor Minor Sports Airflow 495cc	SC. 3303/20	SC. 3303/39	ARC. 184	DF. 1110/30	4'11"	BG. 5303/10			FE. 70	
	Meteor Minor Sports Airflow 495cc				DF. 1111/15	3'7"	BG. 1508/01			FE. 70	
	500 Bullet 499cc	SC. 3303/01	SC. 3303/11	ARC. 1302/00	DF. 1110/21	4'6"	BG. 5303/10			FE. 70	
	500 Bullet 499cc				DF. 1111/15	3'7"	BG. 1508/01			FE. 70	
	500 Bullet Airflow 499cc	SC. 3303/01	SC. 3303/11	ARC. 184	DF. 1110/30	4'11"	BG. 5303/10			FE. 70	
	500 Bullet Airflow 499cc				DF. 1111/15	2'4"	BG. 1508/00			FE. 70	
	Super Meteor 692cc	SC. 3303/01	SC. 3303/11	ARC. 184	DF. 1110/21	4'6"	BG. 5303/10			FE. 70	
	Super Meteor 692cc				DF. 1111/15	3'7"	BG. 1508/01			FE. 70	
	Super Meteor Airflow 692cc	SC. 3303/01	SC. 3303/11	ARC. 184	DF. 1110/30	4'11"	BG. 5303/10			FE. 70	
	Super Meteor Airflow 692cc				DF. 1111/15	3'7"	BG. 1508/01			FE. 70	
	Constellation 692cc	SC. 3303/01	SC. 3303/11	ARC. 184	DF. 1110/21	4'6"	BG. 5303/10			FE. 70	
Constellation 692cc				DF. 1111/15	3'7"	BG. 1508/01			FE. 70		
Constellation Airflow 692cc	SC. 3303/01	SC. 3303/11	ARC. 184	DF. 1110/30	4'11"	BG. 5303/10			FE. 80		
Constellation Airflow 692cc				DF. 1111/15	3'7"	BG. 1508/01			FE. 80		
Geni 98cc Sunwap Scooter 173cc	SN. 3153/43	SN. 3153/71		DF. 1110/24	5'0"	BG. 5115/607			P. 70		
				DF. 1111/15	3'11"				P. 80		
TS1 Tigress 174cc	SN. 3153/78	SN. 3153/88		DF. 1106/14	4'8½"				P. 100		
T20 Tiger Cub 193cc	SN. 3153/17	SN. 3153/18		DF. 1110/20	4'10"	BG. 5330/247			P. 80		
T20S Tiger Cub Sports 199cc	SC. 1102/11	SC. 1102/12		DF. 1110/20	4'10"	BG. 5330/247			P. 80		
T20S Tiger Cub Sports 199cc									P. 80		
Tw2/S Tigress 249cc	SN. 3153/77	SN. 3153/87	ARC. 1101/00	DF. 1111/15	2'4"				P. 80		
3TA Twenty One 348cc	SC. 3304/11	SC. 3304/18		DF. 1106/14	4'8½"				P. 70		
5TA Speed Twin 490cc	SC. 3304/11	SC. 3304/18		DF. 1110/20	4'10"	BG. 5330/287			FE. 75		
T10Q/A Tiger 100 490cc	SC. 3304/11	SC. 3304/18		DF. 1110/20	4'10"	BG. 5330/287			P. 80		
T110 Tiger 649cc	SC. 3304/19	SC. 3304/20		DF. 1110/20	4'10"	BG. 5330/287			FE. 100		
6T Thunderbird 649cc	SC. 3304/19	SC. 3304/20		DF. 1106/11	3'8"				FE. 100		
TW6 Trophy 649cc	SC. 3304/19	SC. 3304/20		DF. 1106/11	3'8"				P. 80		
TW6 Trophy 649cc	SC. 5301/09	SC. 5301/16	ARC. 109	DF. 1106/13	3'8"				FE. 100		
				DF. 1111/15	2'4"				FE. 100		

† For Separate Inner & Outer Flexible Drives See Chart I (Back Cover)
 * For Speedometer with alternative Speed Range See Chart II (Back Cover)
 ** Three Earth-Point Versions.
 † Optional Equipment.
 *** Recommendation on Request According to Tune & Fuel etc.

Make	Model & Description	Speedometer		Rev Indicator	Flexible Drive #		Gear Box	Gear Box Finish	Gear Ring	K.L.C. Sparking Plugs
		Miles	Kilos		Complete	Length				
TRIUMPH (Cont'd)	T120 Bonneville 649cc	SC. 5301/09	SN. 5301/18	RG. 109	DF. 1106/13	3'8"				FE. 100
	T120 Bonneville 649cc (N. America Only)				DF. 1111/15	2'4"				FE. 100
VELOLETTE	LE Mk. III 192cc	SN. 3153/20	SN. 3153/22	A.RG. 1302/02 A.RG. 1302/02	DF. 1111/17	2'9"	BG. 5303/11 BG. 5303/11 BG. 5303/11 BG. 5303/11 BG. 5303/11 BG. 5303/11 BG. 5303/11 BG. 5303/11 BG. 5303/11 BG. 5303/11 BG. 5303/11			TEN L. 30
	Valiant Twin 192cc	SN. 3153/20	SN. 3153/22		DF. 1111/17	2'9"				TEN L. 100
	Valiant Vee Line									
	Twin 192cc	SN. 3153/20	SN. 3153/22		DF. 1111/17	2'9"				
	MAC 349cc	SC. 3308/00			DF. 1110/22	5'3"				
	Viper 349cc	SC. 3308/00			DF. 1110/22	5'3"				
	Viper Clubmans 349cc	SC. 3308/00			DF. 1110/22	5'3"				
	MSS 499cc	SC. 3308/00			DF. 1110/22	5'3"				
	Venom 499cc	SC. 3308/00			DF. 1110/22	5'3"				
	Venom Clubmans 499cc	SC. 3308/00			DF. 1110/22	5'3"				
	Venom Clubmans 499cc	SC. 3308/00			DF. 1110/22	5'3"				
	Venom Sports 499cc	SC. 3308/00			DF. 1110/22	5'3"				
Venom Sports 499cc	SC. 3308/00		DF. 1111/12	3'0"						
Endurance 499cc	SC. 3308/00		DF. 1111/12	3'0"						
		SC. 3308/00		DF. 1110/22	5'3"					FE. 100

THREE WHEELERS, "BUBBLE" CARS, INVALID CHAIRS

BOND	D Family Saloon	SN. 3102/37	SN. 3102/42		DF. 1111/00	8'6"				F. 80
	D Tourer	SN. 3102/37	SN. 3102/42		DF. 1111/00	8'6"				F. 80
	F Saloon Coupe	SN. 4302/00			DF. 1111/00	8'6"				F. 80
	F Family Saloon	SN. 4302/00			DF. 1111/00	8'6"				F. 80
FRISKY	Sport	SN. 3153/71			DF. 1111/00	10'0"				F. 100
	Sprint	SN. 3153/71			DF. 1111/00	10'0"				FE. 70B
INVACAR	Mk. 10 Invalid Carriage	SC. 1101/04			DF. 1111/00	7'0"	BG. 2507/07 BG. 2507/07	41-280-118-00	31-512-303-01	F. 70
	Mk. 11 Invalid Carriage	SN. 3153/93			DF. 1111/00	7'0"				
ISSETA	Standard Saloon, 3 & 4 Wheeler	SN. 3119/00			DF. 1104/00	8'0"				F. 80
	Plus Saloon 3 Wheeler	SN. 3119/00			DF. 1104/00	8'0"				F. 80
	3 Wheeler Regal Tourer	SN. 3102/58	SN. 3102/69		DF. 1113/00	5'4"				F. 50
RELIANT	3 Wheeler Regal Van & Pick-Up	SN. 3102/53	SN. 3102/54		DF. 1113/00	5'4"				F. 50
	Regent Van with Ford 10 hp. Engine	SN. 3213/00			DF. 2301/40	5'0"				F. 50
STANLEY	Mk. 64, Mk. 68, Invalid Carriage.	SN. 3153/81			DF. 1111/00	8'0"	BG. 2504/01	41-280-118-00	31-804-508-01	F. 80
	3 Wheeler	SN. 2103/72			DF. 1111/02	6'6"				F. 80
SCOOTACAR	Delta Invalid Carriage	SN. 3153/75			DF. 1111/15	7'8"				F. 80

* For Separate Inner & Outer Flexible Drives See Chart I (Back Cover)
 ** For Speedometer with Alternative Speed Range See Chart II (Back Cover)
 *** Three Earth-Point Versions.
 # Optional Equipment.
 *** Recommendation on Request According to Tune & Fuel etc.

SMITHS

Motor Cycle Equipment

Illustrated on these pages is a representative range of the most popular types of motor cycle equipment manufactured by Smiths.



Speedometer 3" Chronometric Type

The movement is contained in a heavy pressed steel case, specially treated internally and externally against rust. The case is finished in black enamel and the screw-on bezel is polished chromium plate. Also available with flange bezel and cadmium finished case for nacelle or headlamp installation.

Dial black with white figures and available with or without internal illumination.



"D" Shaped Speedometer

Chronometric Type, for Lightweight Motor Cycles.

Finished in a rust-proofed, black enamelled case with clear white figures on a black dial. Also available with flange bezel for nacelle or headlamp installation.

The internal illumination provides a soft diffused light over the dial and pointer.



60 mm. Speedometer

Nemaag movement also for Lightweight Motor Cycles.

Available with strap or handlebar fixing.

The flat spun-over bezel of polished chrome gives complete weather protection around the glass.

A variety of dial colourings is available.



3" Revolution Indicators

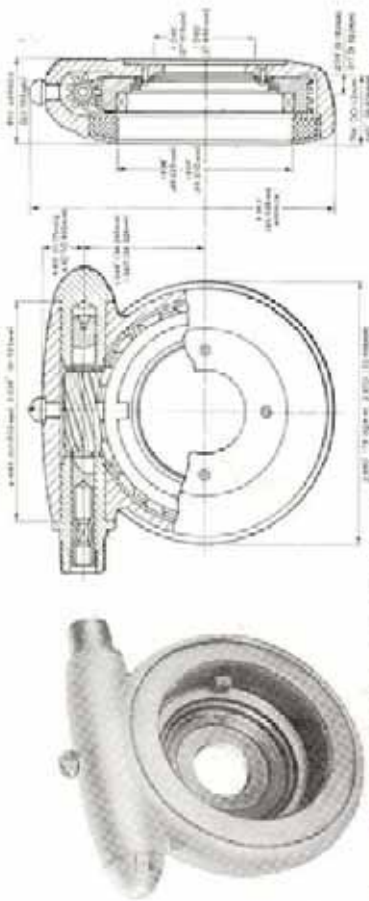
Chronometric movement. Black dial, white figures and pointer, chrome bezel.

Right angle drive can be built in. A maximum hand may be incorporated if required.

Maximum revolutions per minute, ratio and rotation available in any combination of the following:

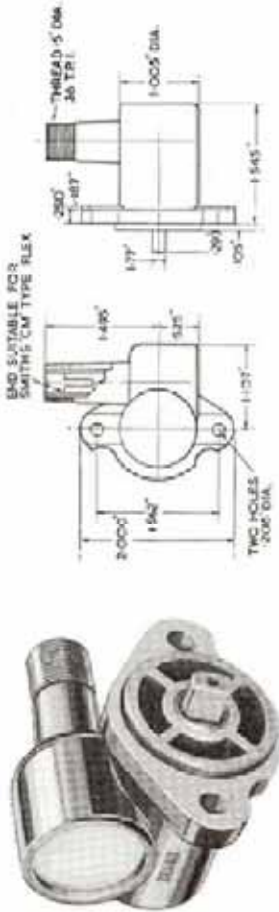
MAX. R.P.M. 8,000 9,000 10,000 12,000
RATIO 2 : 1 4 : 1 4 : 1 4 : 1
ROTATION Clockwise or anti-clockwise

All Smiths motor cycle speedometers are available to register either miles or kilometers per hour.



**Gear Box Code No. BG.5331 & BG.5333 Series
(Replacing 52283/50-88, BG.5101 & BG.5103 Series)**

This hub gear box has a thicker body section than those in the BG.5303 Series (Previously 52283-1-49 Series) and uses the larger felt seal. It can be used where the hub is slotted to provide the necessary engagement or where other provision can be arranged. Clockwise or anti-clockwise input. Ratios: 1:1 & 2:1 Suitable Flexible Drive DF. 1110/20 (Black PVC) or DF. 1110/24 (Grey PVC)



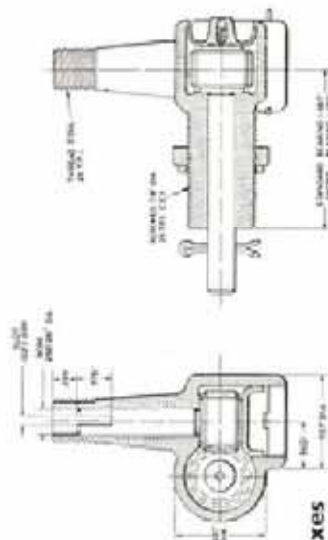
Gear Box Code No. BG. 1508 Series (Replacing 70549 Series)

These gear boxes reverse the rotation of the shaft to which they are attached. The rotation is determined by looking immediately on to the end of the engine spindle with which the gear box or flexible drive is engaged. Plain phosphor bronze bearings. Ratios 1 : 1 and 2 : 1. Suitable Flexible Drive DF. 1111/15 (Black PVC) or DF. 1111/12 (Grey PVC)



Brake Drum Fitting Gear Boxes

Basic Code
 BG.2504 Series (Replacing 34159 Series) Short Reach, Right Hand Gears
 BG.2511 Series (Replacing 70458 Series) Long Reach, Left Hand Gears Ratios of 5:12
 BG.2500 Series (Replacing 25224 Series) Long Reach, Right Hand Gears Ratios of 8:12
 BG.2510 Series (Replacing 70458 Series) Short Reach, Left Hand Gears
 Boxes available for either external gear ring drive or for internal brake-drum fitting, with left or right hand gears to maintain clockwise output.
 Suitable Flexible Drive for these right angle gear boxes: DF. 1111/15 (Black PVC) or DF. 1111/12 (Grey PVC)



The nominal length of a flexible drive is measured between points 'A' and 'B'

Chart I FLEXIBLE DRIVES

Flexible Drive (Complete)	Inner Flexible Drive (Only)	Outer Flexible Drive (Only)
DF.1106/11	DI.1124/00	DO.1106/11
DF.1106/13	DI.1124/00	DO.1106/13
DF.1106/14	DI.1124/00	DO.1106/14
DF.1110/20	DI.1124/00	DO.1110/20
DF.1110/21	DI.1124/00	DO.1110/21
DF.1110/22	DI.1124/00	DO.1110/22
DF.1110/24	DI.1124/00	DO.1110/24
DF.1110/26	DI.1124/00	DO.1110/26
DF.1110/30	DI.1124/00	DO.1110/30
DF.1111/00	DI.1110/02	DO.1111/00
DF.1111/02	DI.1110/02	DO.1111/02
DF.1111/12	DI.1111/00	DO.1111/08
DF.1111/15	DI.1111/00	DO.1111/09
DF.1111/16	DI.1111/00	DO.1111/10
DF.1111/17	DI.1111/00	DO.1111/11
DF.1111/19	DI.1111/00	DO.1111/13
DF.1111/22	DI.1111/00	DO.1111/16
DF.7502/01	DI.7523/00	DO.7502/00
DF.8231/02		

(Non Detachable)

Chart I, above, shows the code numbers of the separate Inner and Outer Flexible Drives which form the complete Flexible Drives listed in the specification section of this booklet.

Chart II ALTERNATIVE SPEEDOMETERS

MILES		KILOS	
80 m.p.h.	120 m.p.h.	140 k.p.h.	180 k.p.h.
S.457/185/N	SC.3303/24	S.457/189/N	S.457/191/N
S.491/1/N	SC.5301/09	S.491/5/N	SC.5301/16
S.525/1/N	SC.5301/07	S.525/5/N	SC.5301/08
S.546/1/N	SC.5301/06	S.546/5/N	SC.5301/17
SC.3303/19	SC.3303/20	S.457/221/N	S.457/207/N
SC.3303/26	S.467/179/N	SC.5301/13	SC.5301/12
SC.3301/27	SC.3303/38	SC.3303/05	SC.3303/07

Chart II, above, shows instruments of a different speed range which are suitable as alternatives to those marked with an asterisk in the specification section of this booklet.

SMITHS

The Motor Accessory Division of

HEAD OFFICE
CRICKLEWOOD WORKS,
LONDON, N.W.2.
 Telephone: Gladstone 3333

MOTOR ACCESSORY DIVISION

S. Smith & Sons (England) Ltd

SALES AND SERVICE
50, OXGATE LANE,
LONDON, N.W.2.
 Telephone: Gladstone 8030

Telegrams: Speediflex, London Telex 22631