

01.1.00.3

- | | | |
|-------------------------------------|------------------------------|---|
| 33 Internal Felt Packing | 342 Bridge | 50 Trip Pawl Complete |
| 34 Spring (for Total & Trip Pawl) | 43 Fixing Screw (for Bridge) | 51 Worm Wheel Shaft |
| 35 Arm End Plate | 44 Pawl Friction Washer | 52 Transfer Plate |
| 36 Fixing Screw (for Arm End Plate) | 45 Worm Wheel 24/60 25T | 53 Transfer Plate Screw |
| 37 Worm Wheel Shaft Nut | 46 Total Pawl Complete | 54 Dial Paper Washer |
| 38 Spring (for Clutch Lever) | 47 Pawl Distance Washer | 55 Thrust Washer |
| 39 Clutch Lever | 48 Eccentric Pin | 56 Sleeve & Trip Pin (for Trip Reset Spindle) |
| 40 Clutch Lever Pivot | 49 Eccentric | 57 Spring (for Trip Reset Spindle) |
| 41 Trip Reset Spindle | | |

.00 SILENT
 .01 bellmont

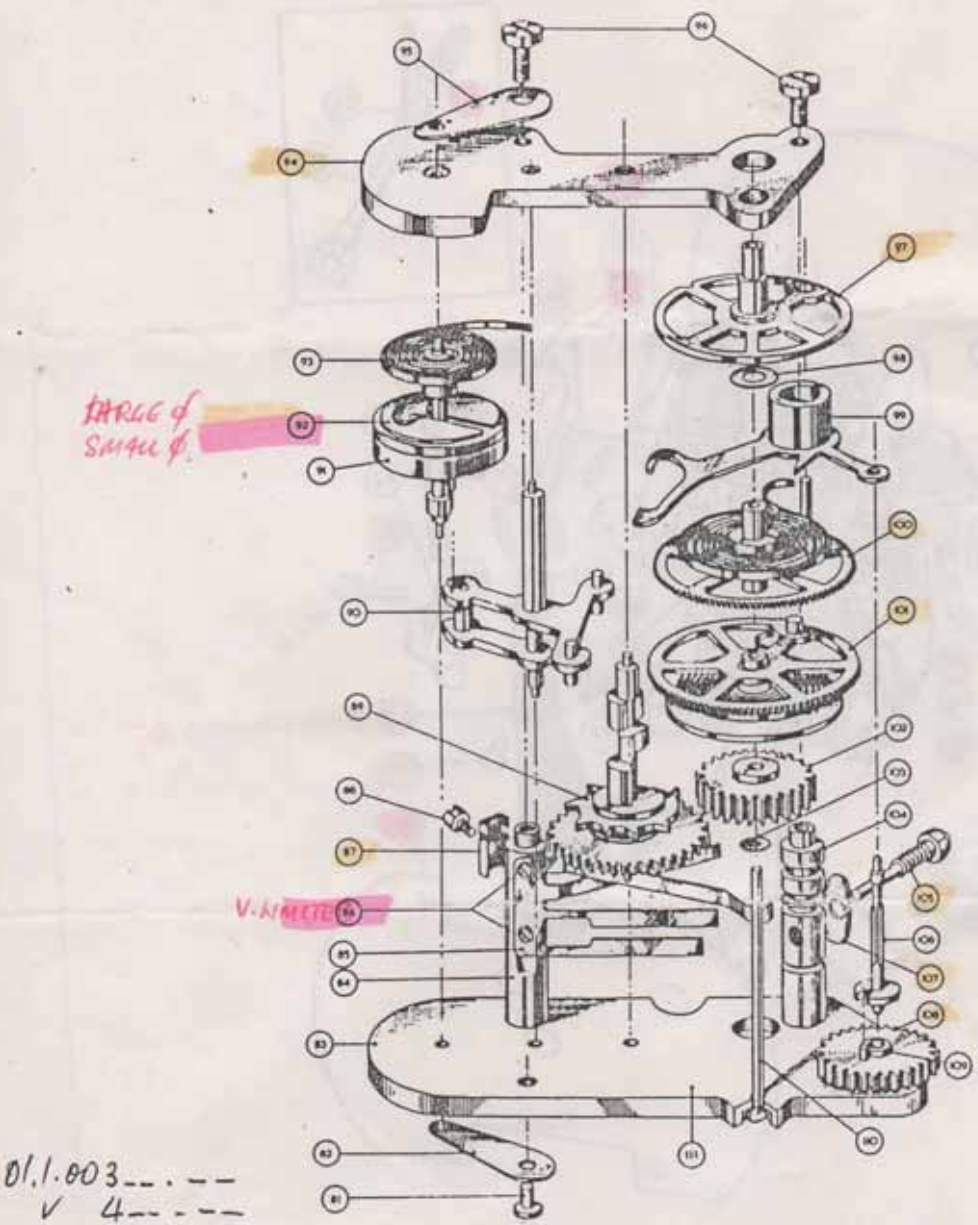
201.01 36T

FIG. 5. Chronometric Speedometer (Circular Type). General Arrangement of Frame.

CAN SUPPLY
 NEW

GOOD 2ND HAND

20 pmb



01.1.003 ---
 ✓ 4 ---

- | | | |
|--|---|--|
| 3 01 Rivet (for Balance Wheel End Plate) | 3 92 Regulating Washer ^{DO SMALL CHANGE} | 402 Centre Wheel Complete |
| 02 Balance Wheel End Plate | 93 Balance Hairspring Complete | 103 Centre Spindle Washer |
| 03 Bottom Plate | 94 Top Plate | 104 Rocker Pillar |
| 04 Pillar (Four Leaf) | 95 Balance Wheel End Plate | 105 Stop Screw |
| 05 Four Leaf Spring | 96 Fixing Screw (for Pillars) | 106 Communder Pinion ^{10 10T} |
| 06 Screw (for Leaf Spring) | 97 Stabilisator Wheel Complete | 107 Pillar Plate |
| 07 Hairspring Fixing Plate | 98 End Shake Washer | 108 Movement Drive Wheel Complete |
| 08 Screw (for Hairspring Fixing Plate) | 99 Rocker Complete | 109 Movement Drive Wheel Bush |
| 09 Casshaft Assembly Complete | 100 Corrector Wheel Complete | 110 Centre Spindle |
| 10 Fork & Spindle Assembly | 101 Integrator Wheel Complete | * 111 Bottom Plate Assembly |
| 11 Balance Wheel Assembly | | |

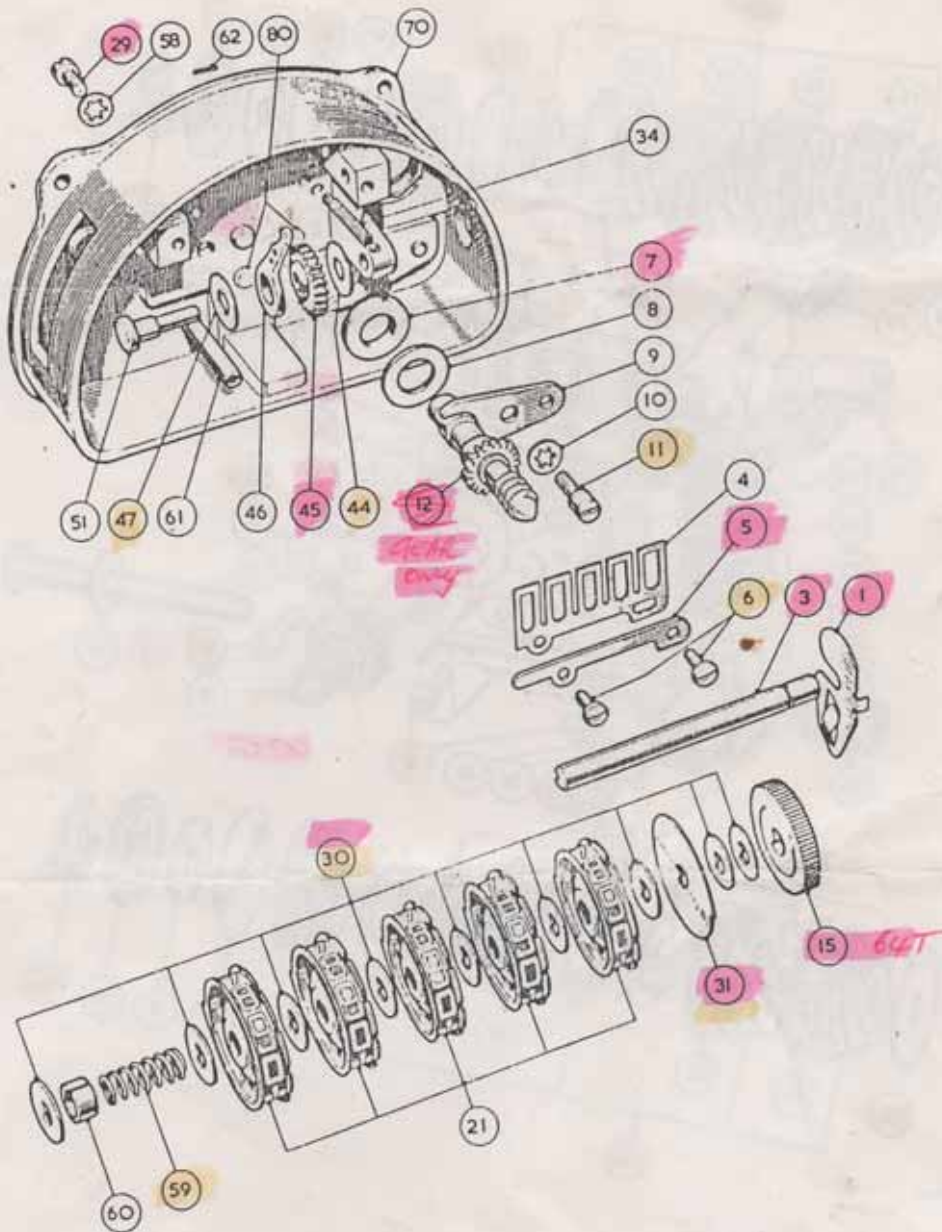
* This assembly comprises Illustration Nos. 01, 02, 03, 04, 103, 104, 108, 109 & 110.

fig. 6. Chronometric Speedometer. General Arrangement of Movement for Circular and 'D' Shaped Instruments.

CAN SUPPLY
 NEW

CROD 2ND HAND

30 parts

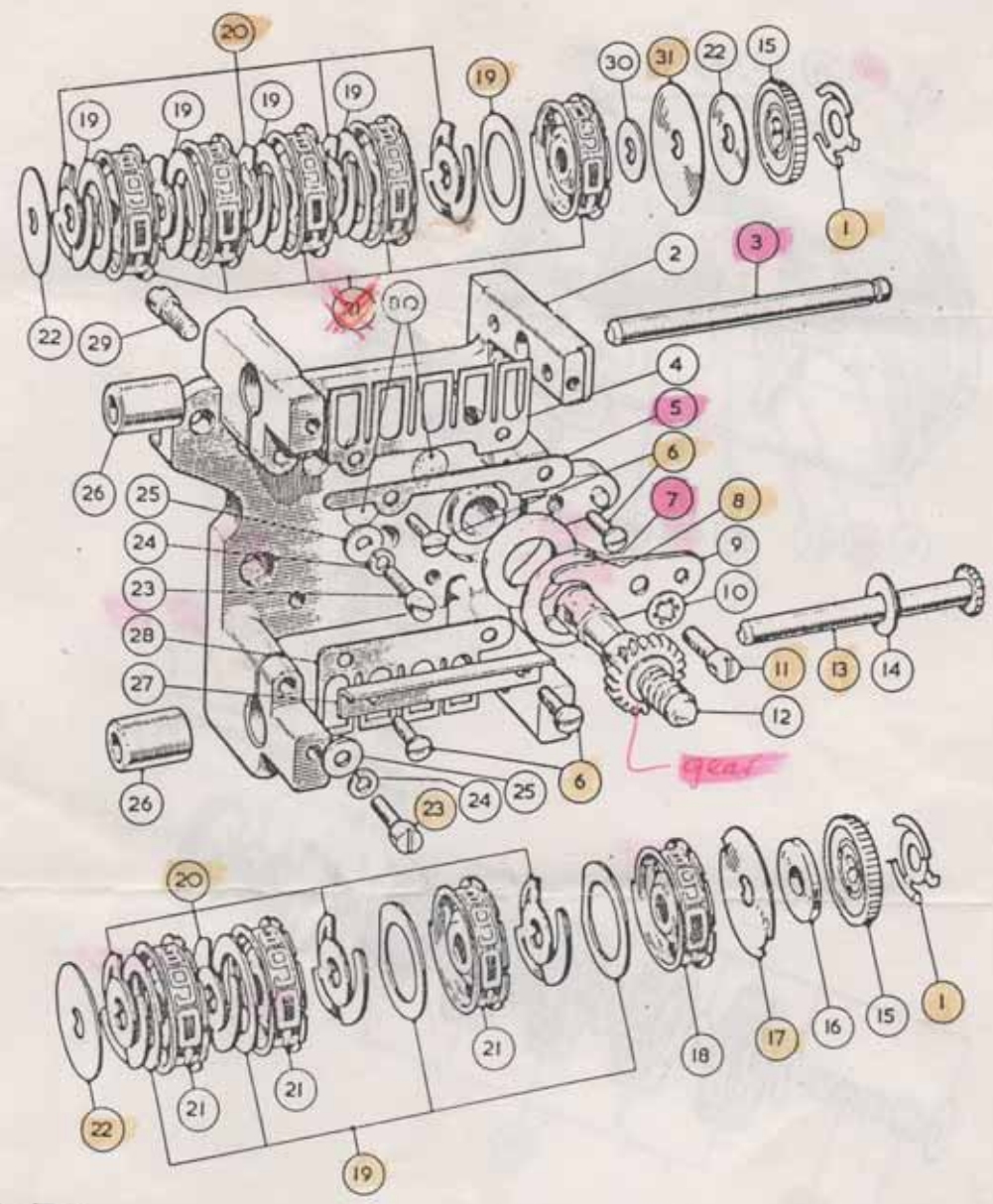


01.1.00.3 - - - -

- | | | |
|----------------------------------|-----------------------------------|---------------------------|
| 301 Brake Spring | 312 Main Drive Spindle & Pinion | 347 Pawl Distance washer |
| 3 Mileage Recorder Shaft | 315 Hatchet Wheel 64T | 51 Worm Wheel Shaft |
| 4 Total Comb Spring | 21 Counter Drum (White Figs.) | 50 Movement Fixing Washer |
| 5 Total Comb Spring Bar | 29 Movement Fixing Screw | 59 Counter Spring |
| 6 Fixing Screw (for Comb Spring) | 30 Key Washer | 60 Distance Clip |
| 7 Felt Washer | 31 Steel Cam | 61 Dial Support Pillar |
| 8 Lubricator Cover Washer | 34 Spring (for Total & Trip Pawl) | 62 Anchor Pin |
| 9 Key (for Main Drive Spindle) | 34 Pawl Friction Washer | 70 Case |
| 10 Spring Washer | 45 Worm Wheel | 80 Felt Pad |
| 11 Fixing Screw (for Key) | 46 Total Pawl Complete | |

Fig. 4. Chronometric Speedometer ('D' Shaped Type). General Arrangement of Frame.

Can supply.
NEW
Good 2nd hand



SIDE
OR
BOTTOM TRIP.

gear

01.1.003

- | | | |
|----------------------------------|---------------------------------|--------------------------------------|
| 1 Brake Spring | 12 Main Drive Spindle & Pinion | 23 Clamping Sleeve Retaining Screw |
| 2 Frame | 13 Trip Recorder Shaft & Pinion | 24 Clamping Sleeve Retaining Washer |
| 3 Mileage Recorder Shaft | 14 Trip Distance Washer | 25 Clamping Sleeve Retaining Washer |
| 4 Total Comb Spring | 15 Ratchet Wheel | 26 Clamping Sleeve |
| 5 Total Comb Spring Bar | 16 Trip Friction Washer | 27 Clamp Plate & Grease Splash Guard |
| 6 Fixing Screw (for Comb Spring) | 17 Reset Drive Plate | 28 Trip Comb Spring |
| 7 Felt Washer | 18 Counter Drum (Red Figs.) | 29 Movement Fixing Screw |
| 8 Lubricator Cover Washer | 19 Friction Plate | 30 Key Washer |
| 9 Key (for Main Drive Spindle) | 20 Spider Spring | 31 Steel Cam |
| 10 Spring Washer | 21 Counter Drum (White Figs.) | 80 Felt Pad |
| 11 Fixing Screw (for Key) | 22 Pressure Plate | |

Fig. 3. Chronometric Speedometer (Circular Type). General Arrangement of Frame.

CAN SUPPLY

NEW

20 16

GOOD 2ND HAND

76 mb



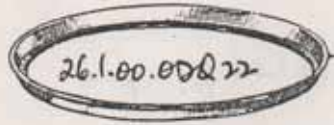
{ 01.1.00.363.01 Relnamed.
 25.1.00.101.00 } New **LIPLESS**
 01 backflange
 02 TRIUMPH.



64 as 26.1.00.150.00 for 3" φ



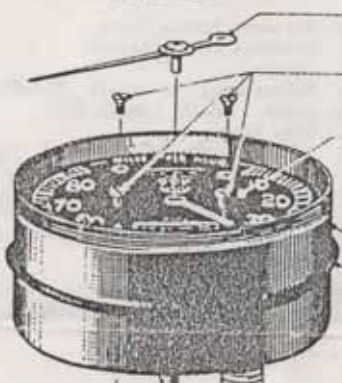
65 as 26.1.00 GLASS



66

01.1.00.3 - - - -

- 3 65 Bezel
- 64 Rubber Ring (Internal)
- 65 Glass
- 66 Slip Ring as 26.1.00.00022.
- 67 Pointer
- 68 Dial Screw
- 69 Dial as 26.1.01. - - - -
- 70 Case 04 LIGHT; 05 NO LIGHT
- 71 Rubber Ring (External)
- 72 Split Pin or Screw (for Trip Knob)
- 73 Trip Knob Assembly
- 74 Trip Knob
- 75 Casing Washer
- 76 Casing Screw
- 77 Bulb & Bulb Holder
- 78 Retaining Spring (for Bulb Holder)
- 79 Retaining Ring (for Bulb Holder)



69 as 26.1.01. - - - -

70 04
 05

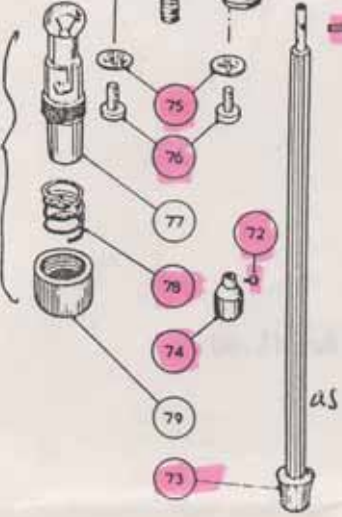
71 as 26.1.06.234.10

CAN SUPPLY

NEW

GOOD 2ND HAND

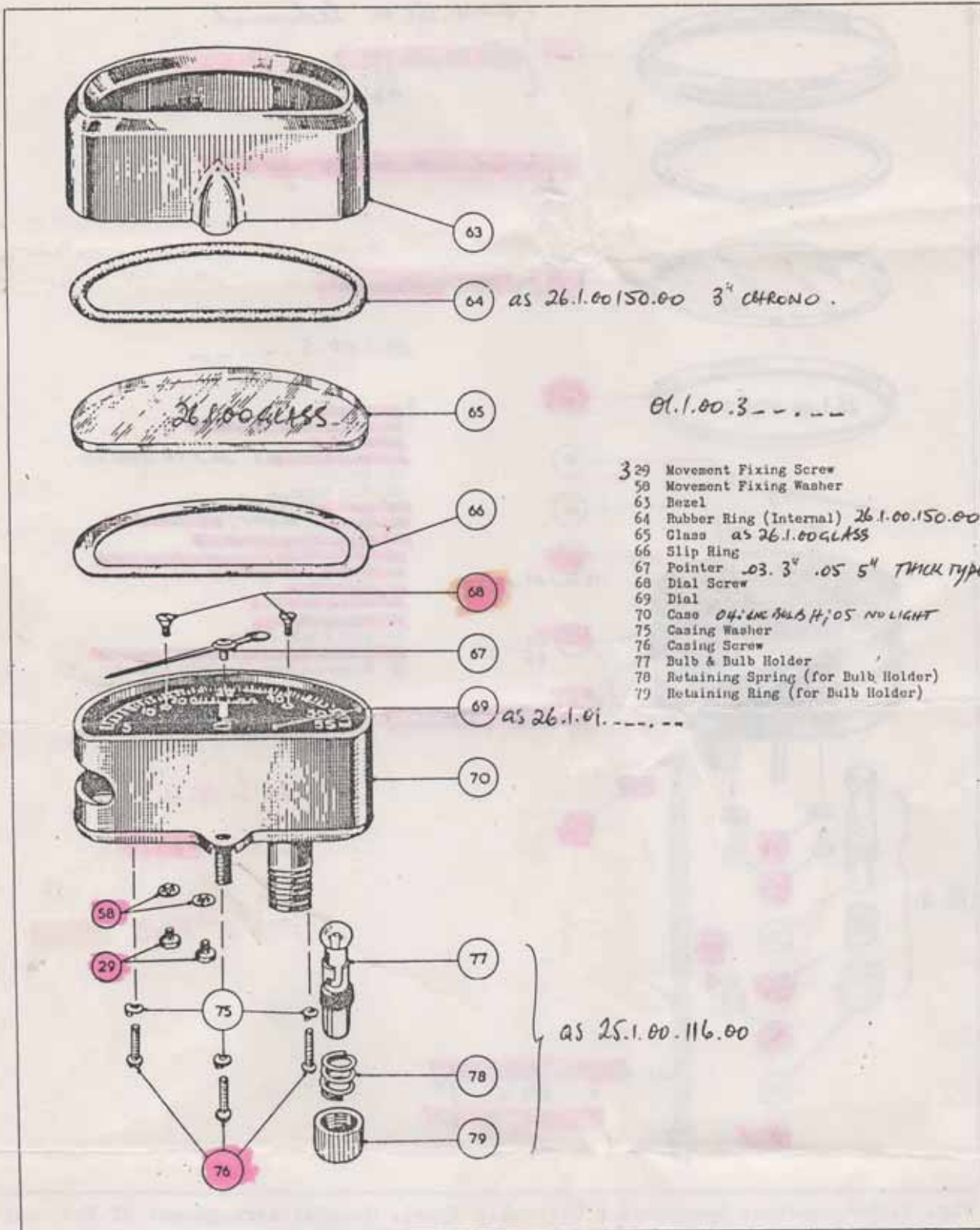
as 25.1.00.116.00



as 01.1.00.373.04 4"
 ✓ 373.08 8"
 ✓ 108.06 6"

Fig. 1. Chronometric Speedometer (Circular Type). General Arrangement of External Parts.

LLP



- 3 29 Movement Fixing Screw
- 50 Movement Fixing Washer
- 63 Bezel
- 64 Rubber Ring (Internal) 26.1.00.150.00
- 65 Glass as 26.1.00 GLASS
- 66 Slip Ring
- 67 Pointer .03. 3" .05 5" THICK TYPES
- 68 Dial Screw
- 69 Dial
- 70 Case 04.1 MC BULB H; 05 NO LIGHT
- 75 Casing Washer
- 76 Casing Screw
- 77 Bulb & Bulb Holder
- 78 Retaining Spring (for Bulb Holder)
- 79 Retaining Ring (for Bulb Holder)

Fig. 2. Chronometric Speedometer ('D' Shaped Type). General Arrangement of External Parts.

CAN SUPPLY

20 15

NEW

Good 2ND HAND