

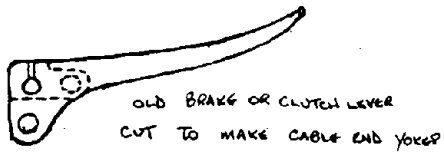
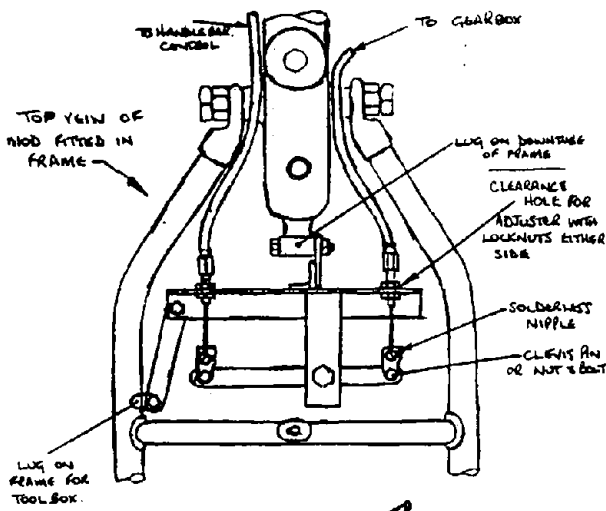
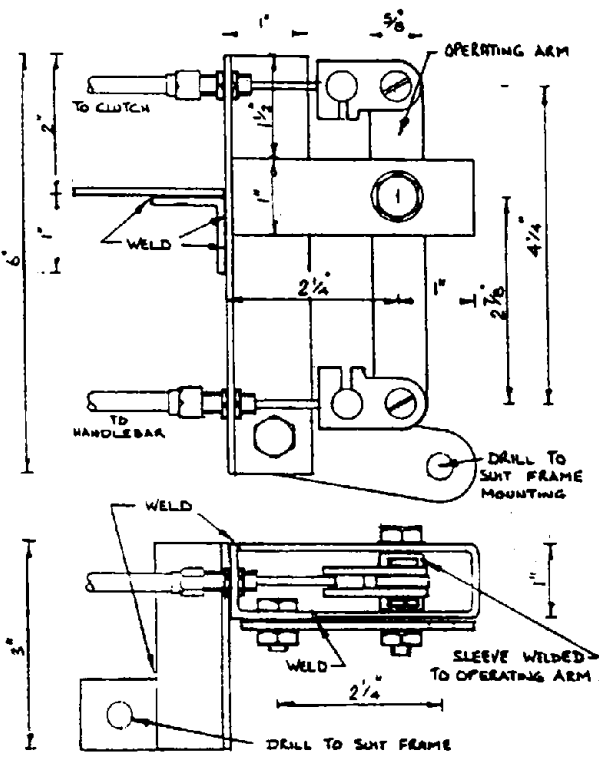
# MODIFICATION TO EASE CLUTCH OPERATION

Here are the plans I promised at last years Jampot Rally for my clutch modification. Quite a few people had a look at it and expressed interest (G12CSR XRJ 488), but unfortunately I have not had the time to do it earlier.

I made up the frame from old bits of angle iron and flat bar and welded it together, but if you do not have welding equipment or someone to do it for you, then it can be bolted or rivetted together. I think the drawings are self explanatory (I hope). (See page 13)

When adjusting leave both cables slack and adjust the clutch rod as per handbook, then adjust the cable from the gearbox first (bring the operating arm closer to the adjuster to give more movement at the other end). You can then adjust the cable from the handlebar control lever to take up most of the free play. But make sure that the clutch rod still has its free movement. (When making the unit, try to make all the pivots a good fit). Old or broken cables can be used to set it up then good cables can be cut to the correct length. I have used this mod. over two thousand miles and it certainly makes life easier, especially in town traffic.

*Jampot*



MOD. TO EASE CLUTCH OPERATION.